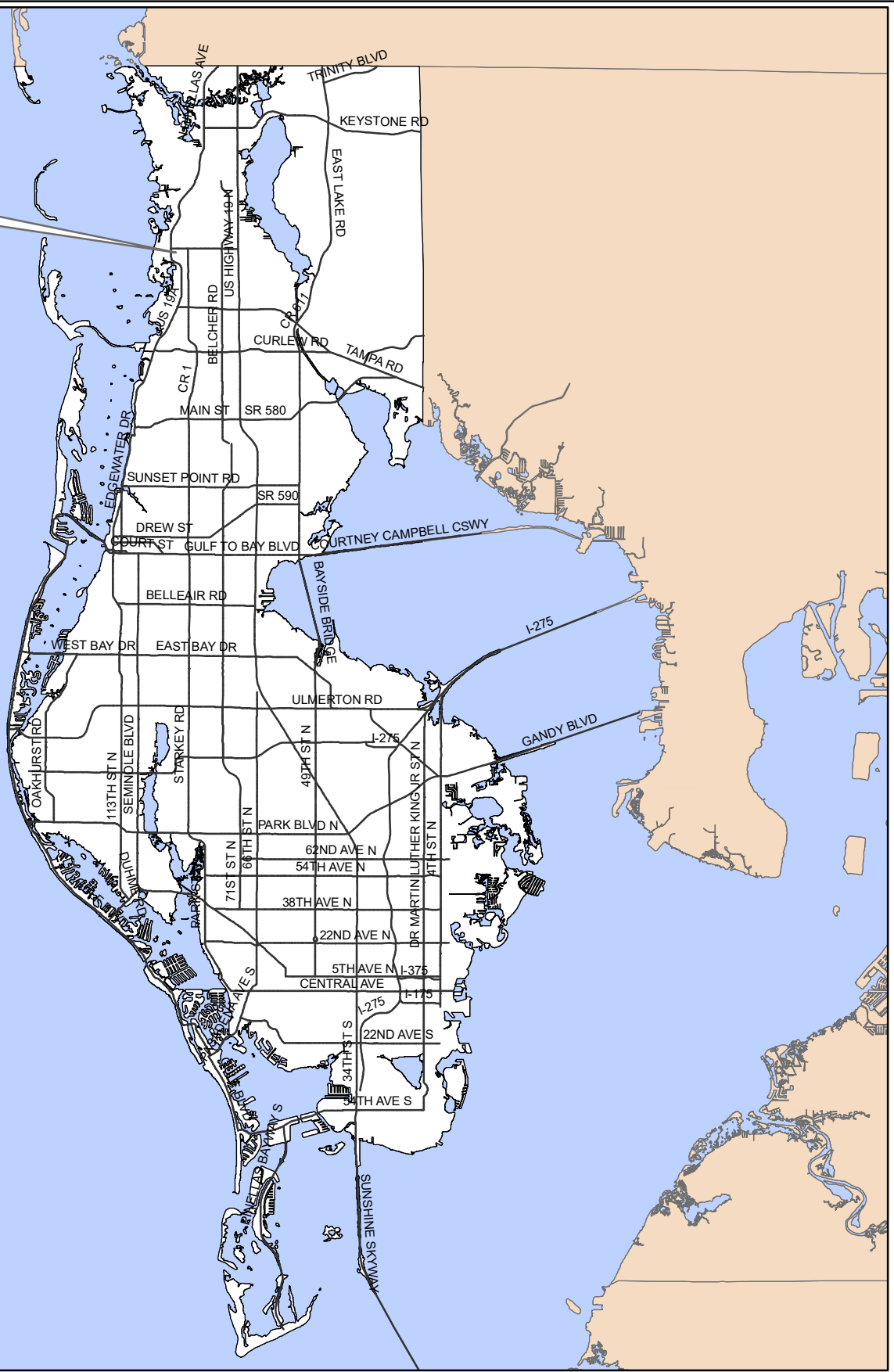


Z/LU-22-10-19



Surrounding Counties

**Z/LU-22-10-19**

**Location Map**

**Zoning** From: RM, Multi-Family Residential  
To: C-2, General Commercial & Services

**Land Use** From: Residential Urban  
To: Commercial General



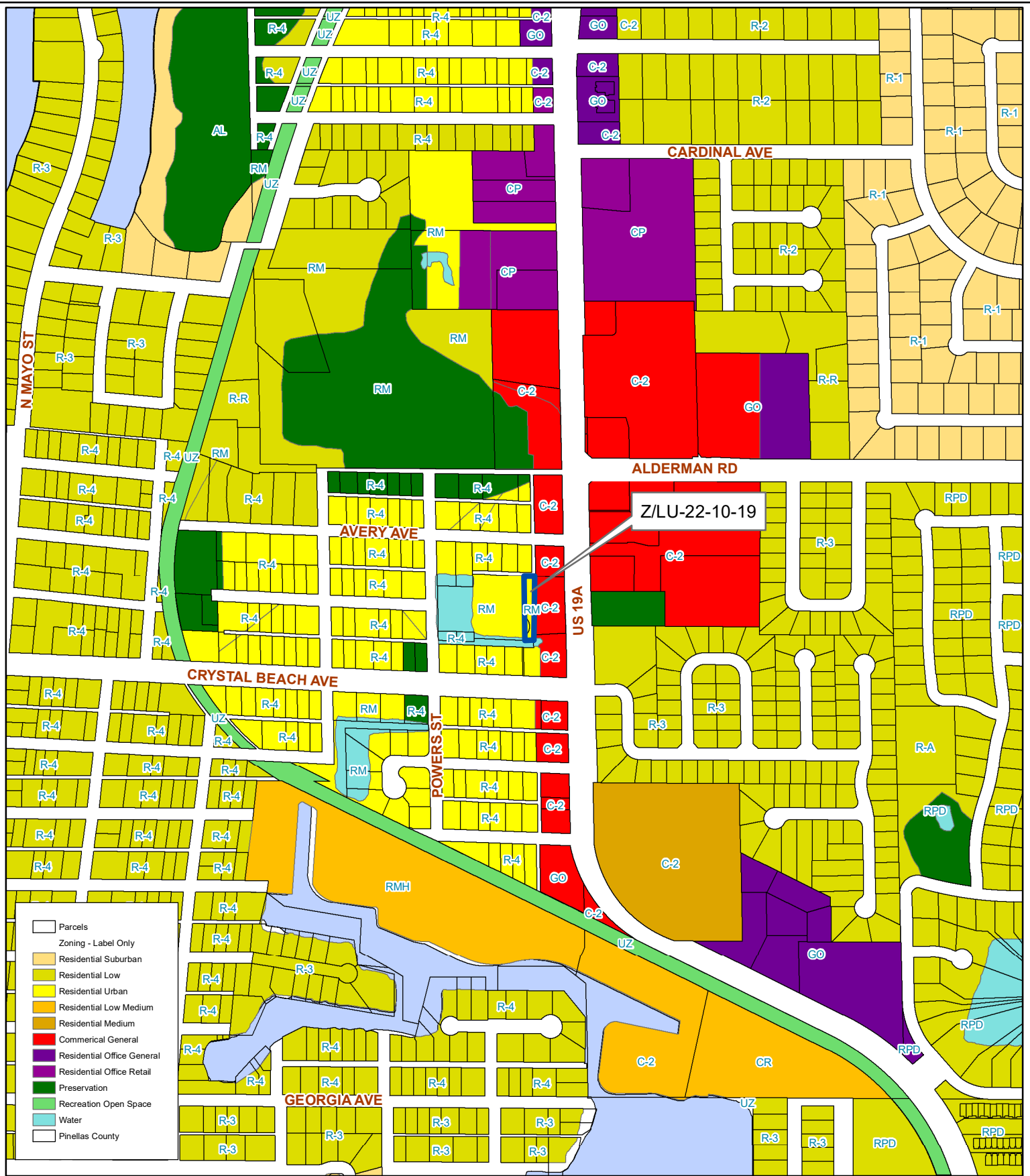
35/27/15/00000/310/0100 & 35/27/15/19872/081/0150

Prepared by: Pinellas County Planning Department



Date: 09/05/2019

1 inch = 4.5 miles



- Parcels
- Zoning - Label Only**
- Residential Suburban
- Residential Low
- Residential Urban
- Residential Low Medium
- Residential Medium
- Commercial General
- Residential Office General
- Residential Office Retail
- Preservation
- Recreation Open Space
- Water
- Pinellas County

**Z/LU-22-10-19**  
**Current Land Use & Zoning**

**Zoning**      **From:** RM, Multi-Family Residential  
                          **To:** C-2, General Commercial & Services

**Land Use**      **From:** Residential Urban  
                          **To:** Commercial General



35/27/15/00000/310/0100 & 35/27/15/19872/081/0150

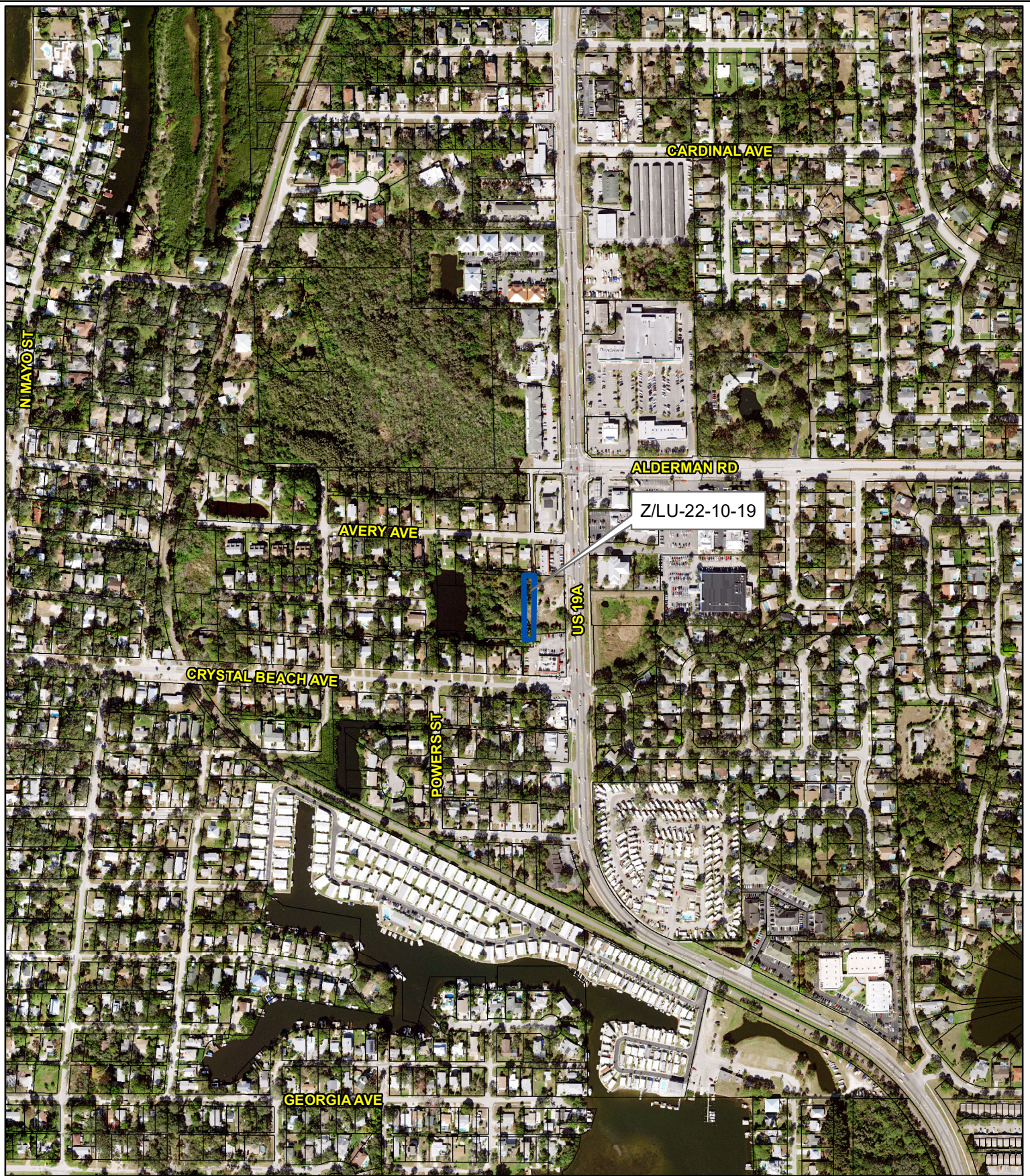
Prepared by: Pinellas County Planning Department



Date: 09/05/2019

1 inch = 0.1 miles





**Z/LU-22-10-19**

**Aerial Map**

**Zoning** From: RM, Multi-Family Residential  
To: C-2, General Commercial & Services

**Land Use** From: Residential Urban  
To: Commercial General

35/27/15/00000/310/0100 & 35/27/15/19872/081/0150

Prepared by: Pinellas County Planning Department



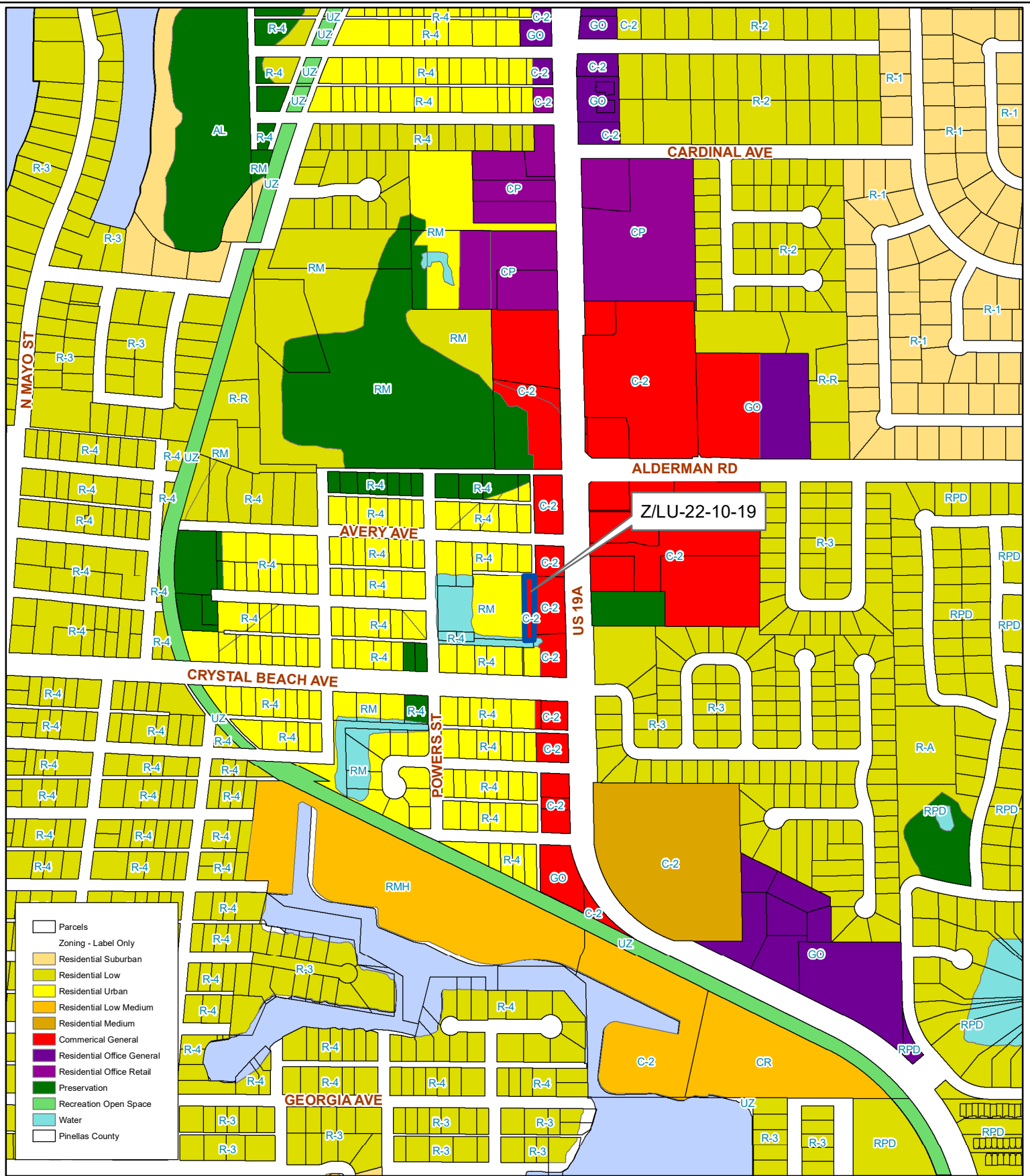
Date: 09/05/2019



1 inch = 0.1 miles







**Z/LU-22-10-19**

**Proposed Land Use & Zoning**

**Zoning** From: RM, Multi-Family Residential  
To: C-2, General Commercial & Services

**Land Use** From: Residential Urban  
To: Commercial General

35/27/15/00000/310/0100 & 35/27/15/19872/081/0150

Prepared by: Pinellas County Planning Department



Date: 09/05/2019



1 inch = 0.1 miles