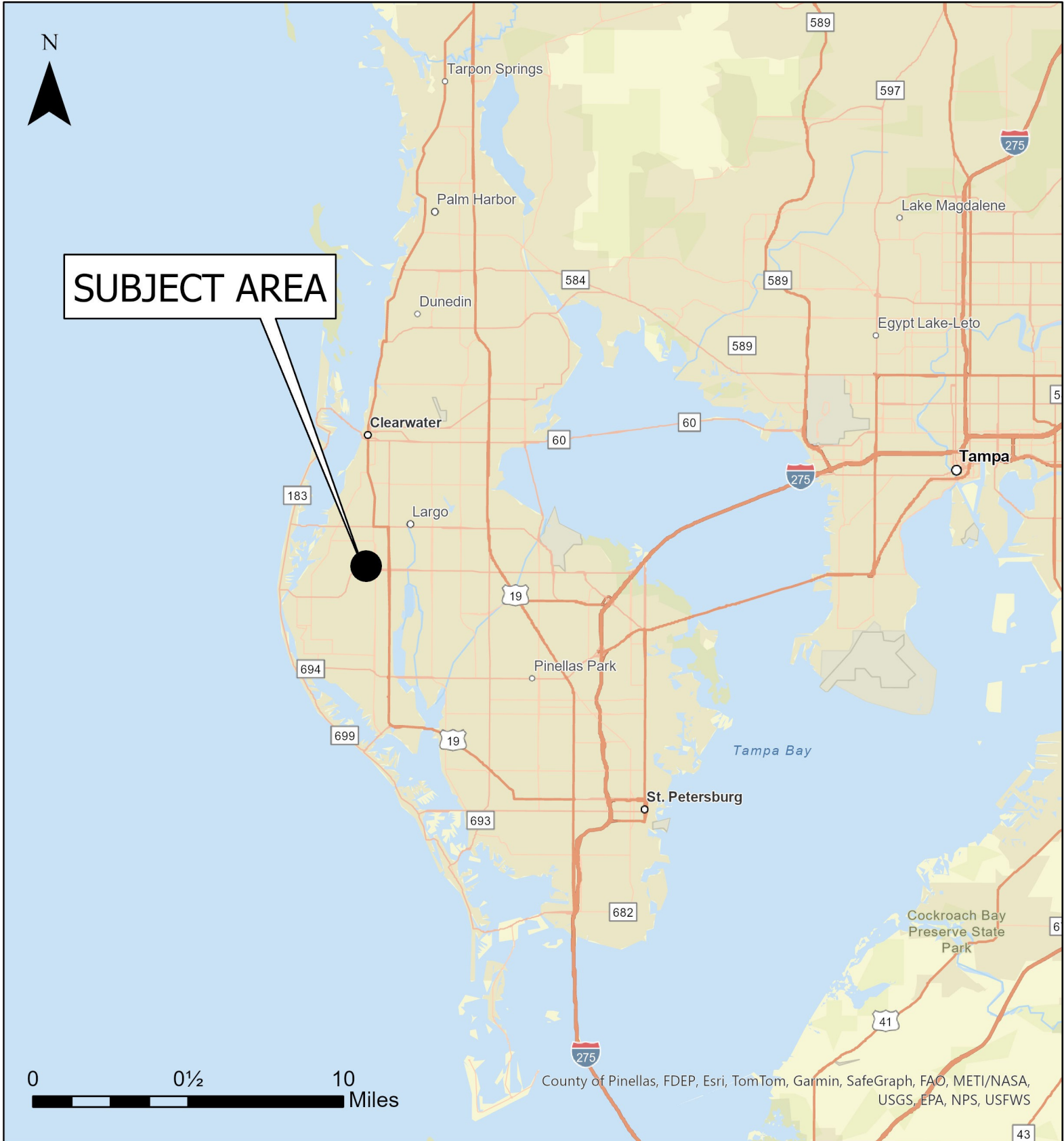


Case CW25-01

Map 1: Location Map



JURISDICTION: Pinellas County

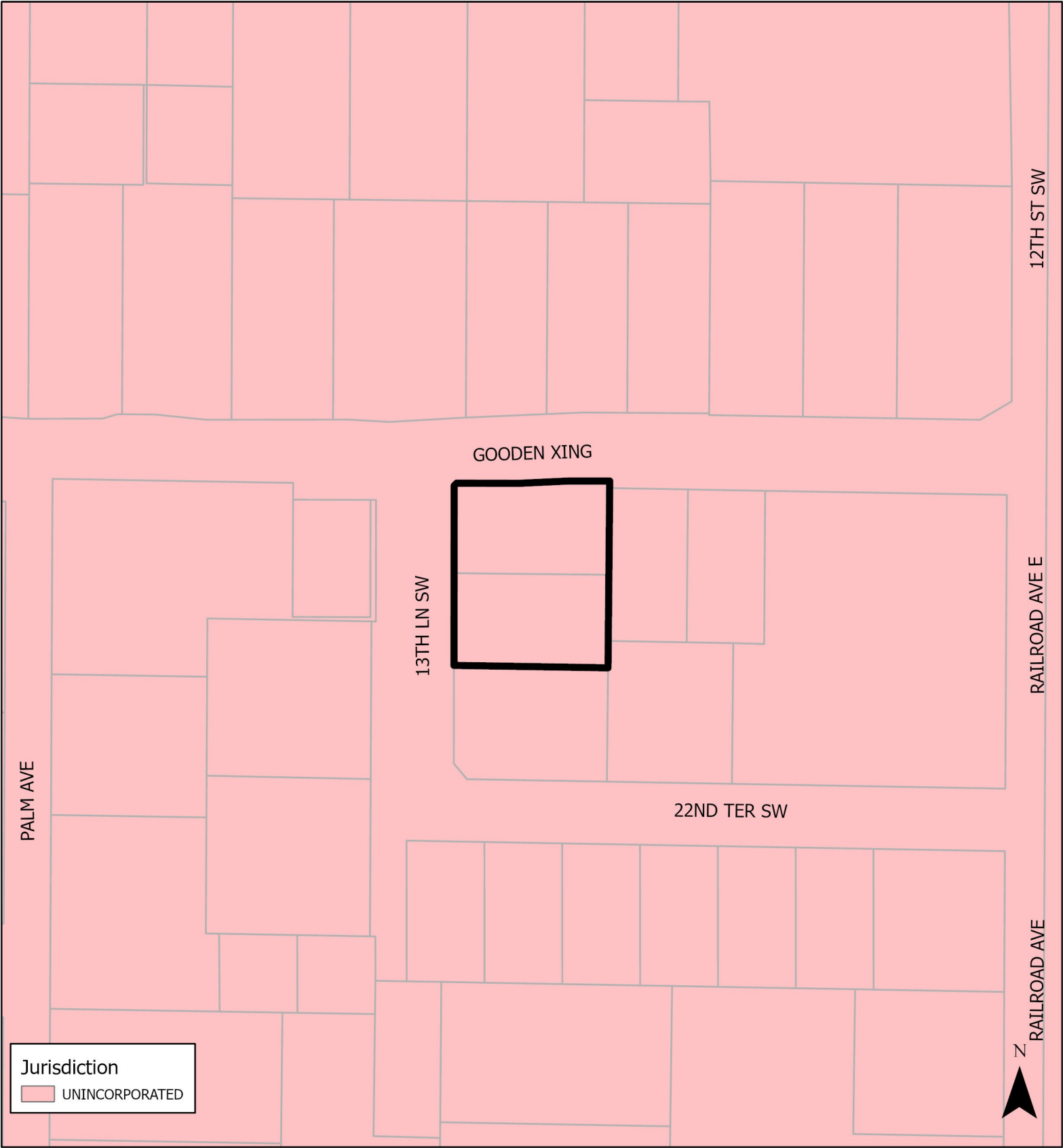
FROM: Retail & Services

AREA: 0.26 acres m.o.l.

TO: Residential Low Medium

Case CW25-01

Map 2: Jurisdictional Map



JURISDICTION: Pinellas County

FROM: Retail & Services

AREA: 0.26 acres m.o.l.

TO: Residential Low Medium



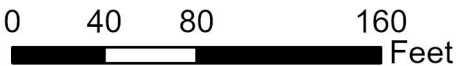
Case CW25-01

Map 3: Aerial Map



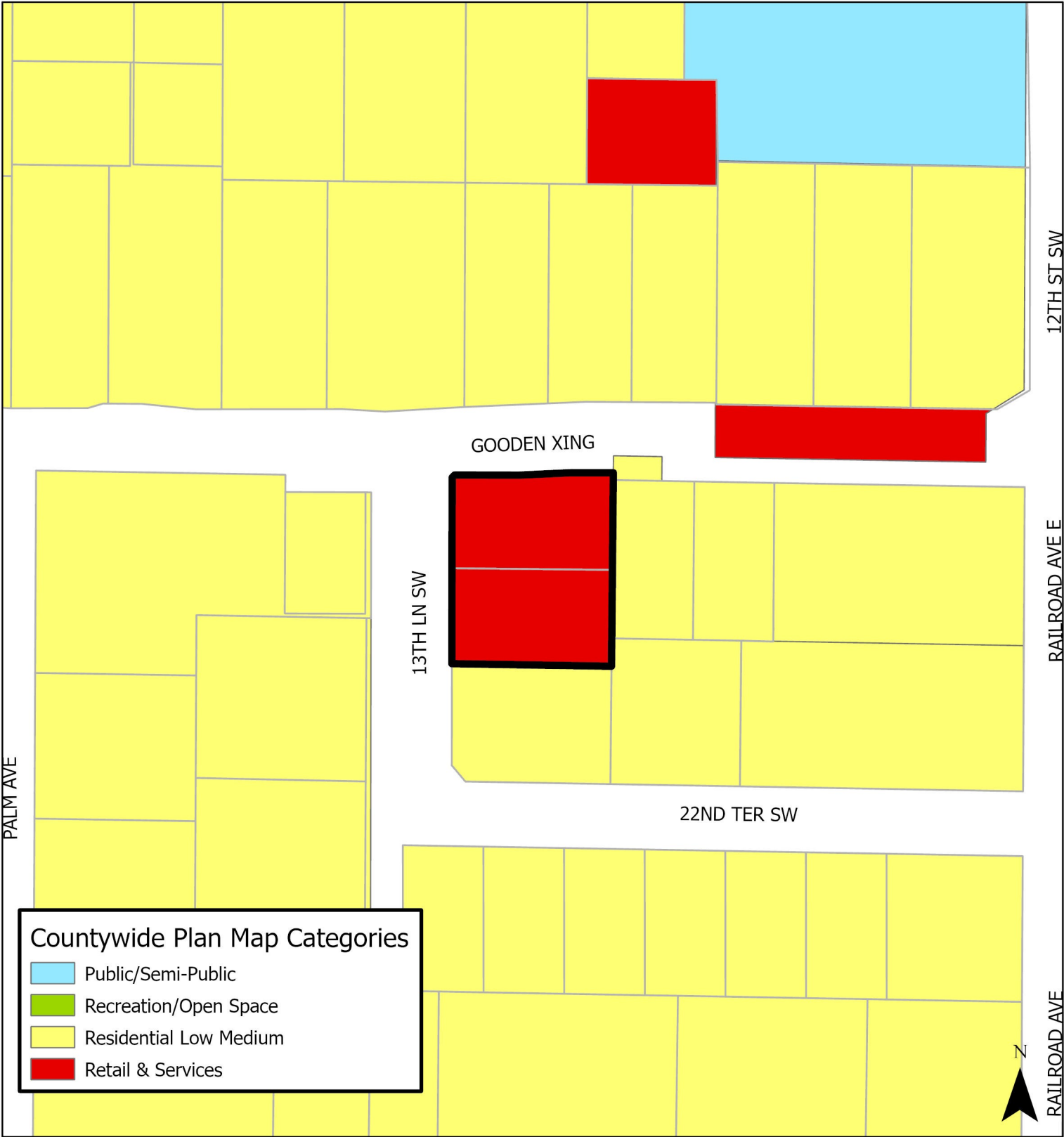
JURISDICTION: Pinellas County **FROM:** Retail & Services

AREA: 0.26 acres m.o.l. **TO:** Residential Low Medium



Case CW25-01

Map 4: Current Countywide Plan Map



JURISDICTION: Pinellas County
AREA: 0.26 acres m.o.l

FROM: Retail & Services
TO: Residential Low Medium

