

**Z-16-07-18**  
**Location Map**

**Zoning**

**From:** A-E, Agricultural Estate Residential

**To:** IL, Institutional Limited

09/27/16/00000/230/0501

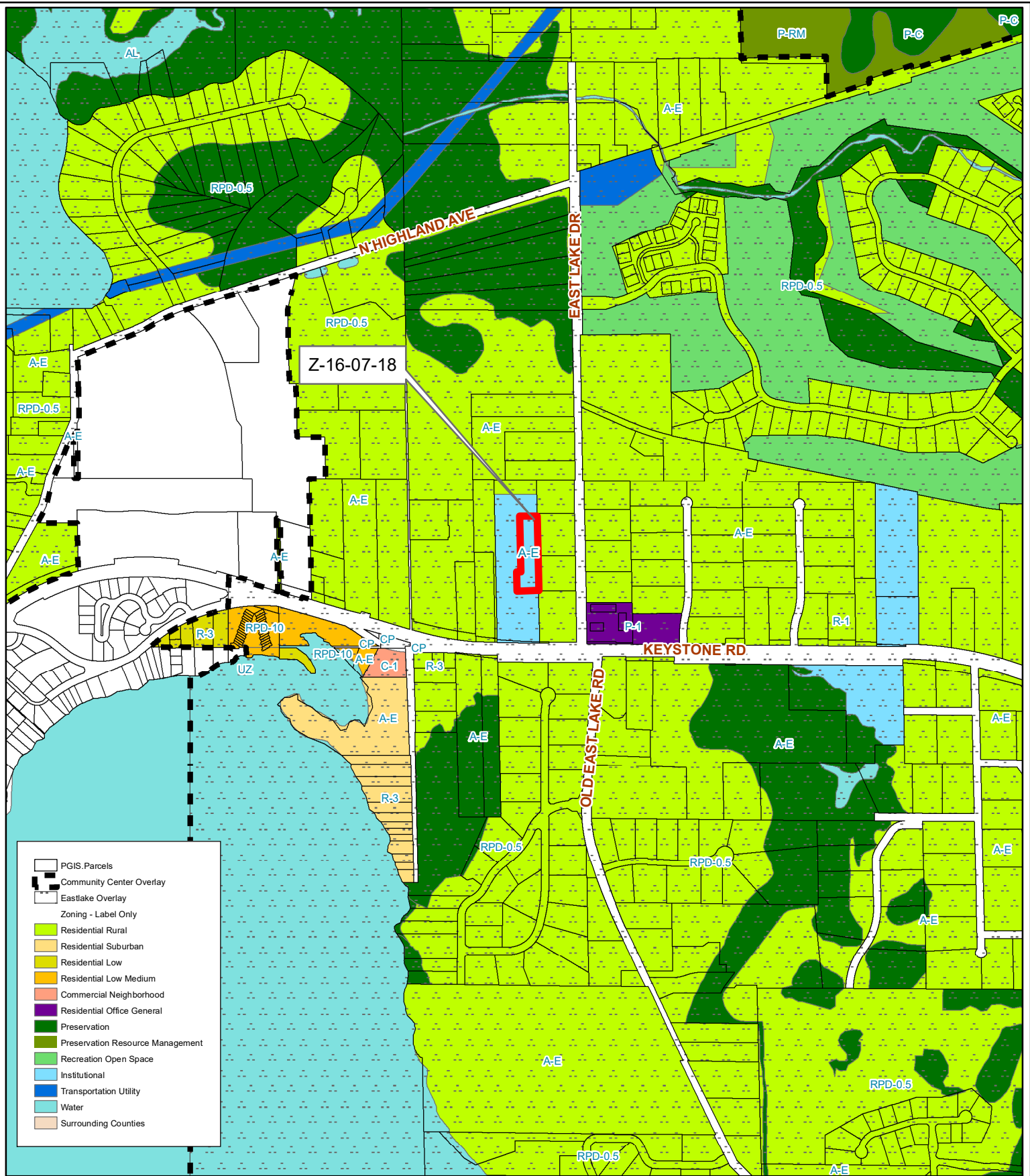
Prepared by: Pinellas County Planning Department



Date: 5/30/2018



1 inch = 4.5 miles



**Z-16-07-18**  
**Current Zoning**

**Zoning**

**From:** A-E, Agricultural Estate Residential

**To:** IL, Institutional Limited

09/27/16/00000/230/0501

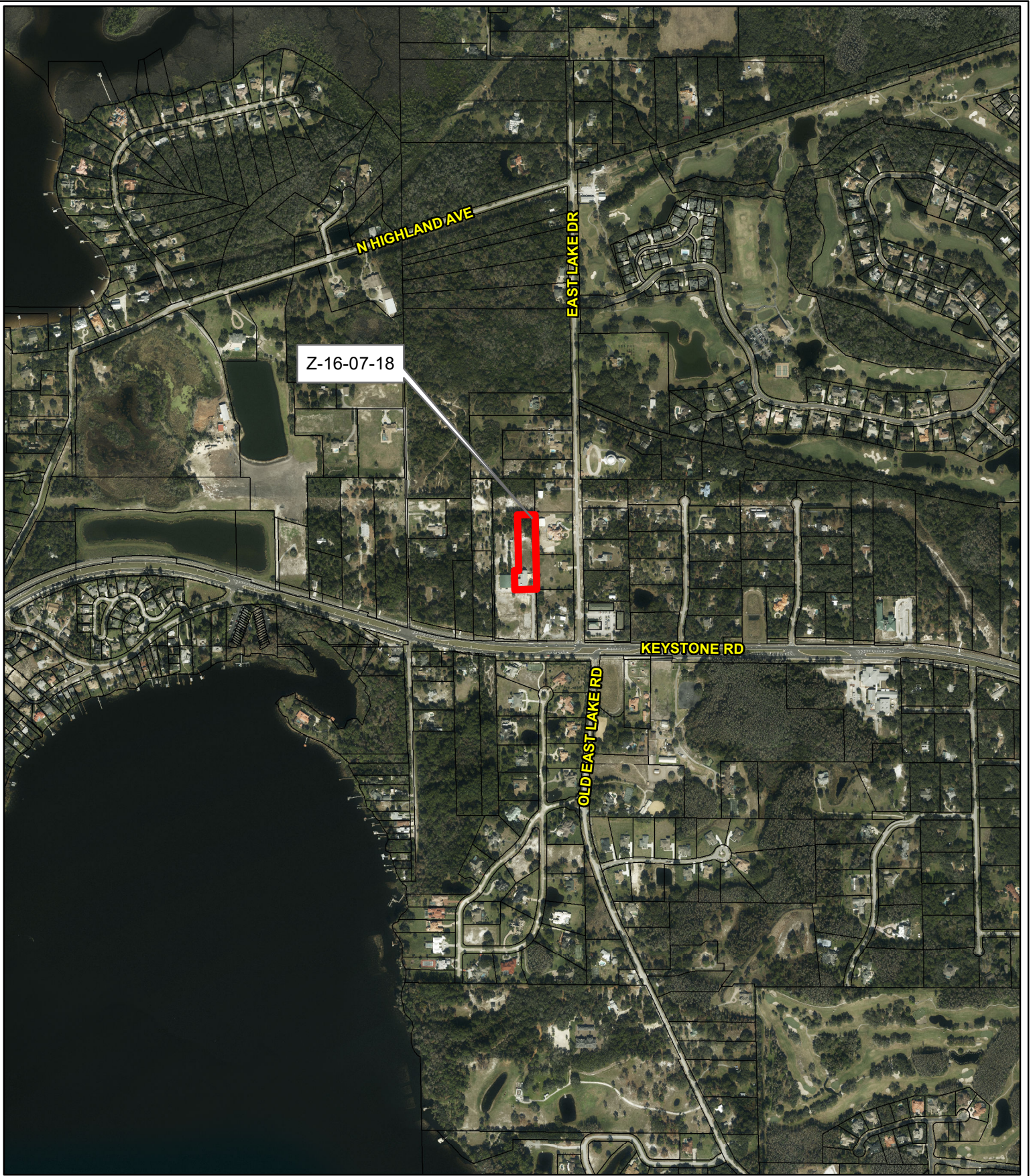
Prepared by: Pinellas County Planning Department



Date: 5/30/2018



1 inch = 0.19 miles



**Z-16-07-18**

**Aerial Map**

**Zoning**

**From:** A-E, Agricultural Estate Residential

**To:** IL, Institutional Limited



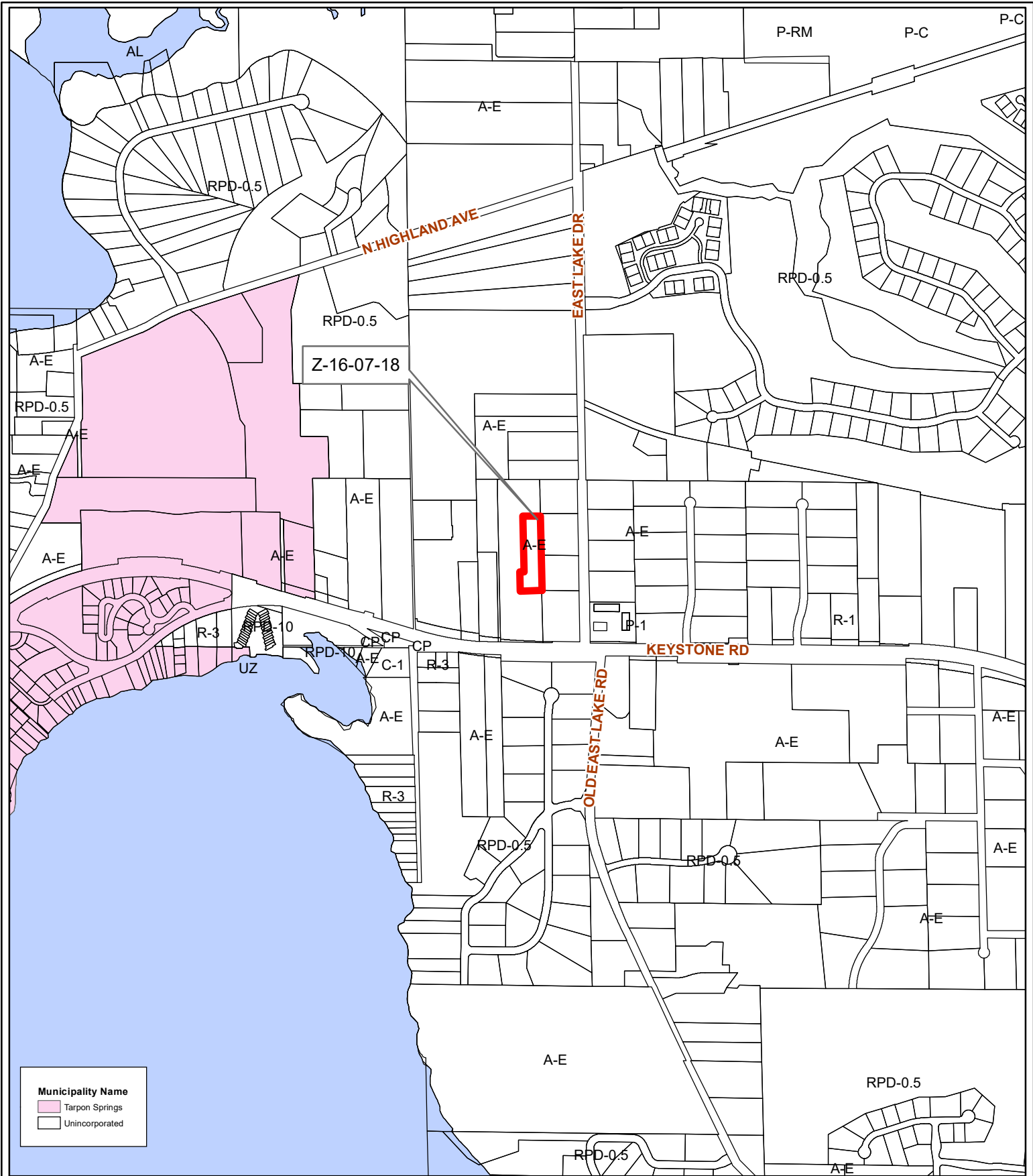
09/27/16/00000/230/0501

Prepared by: Pinellas County Planning Department



Date: 5/30/2018

1 inch = 0.19 miles



**Municipality Name**  
 Tarpon Springs  
 Unincorporated

**Z-16-07-18**  
**Municipal Map**

**Zoning**  
**From:** A-E, Agricultural Estate Residential  
**To:** IL, Institutional Limited



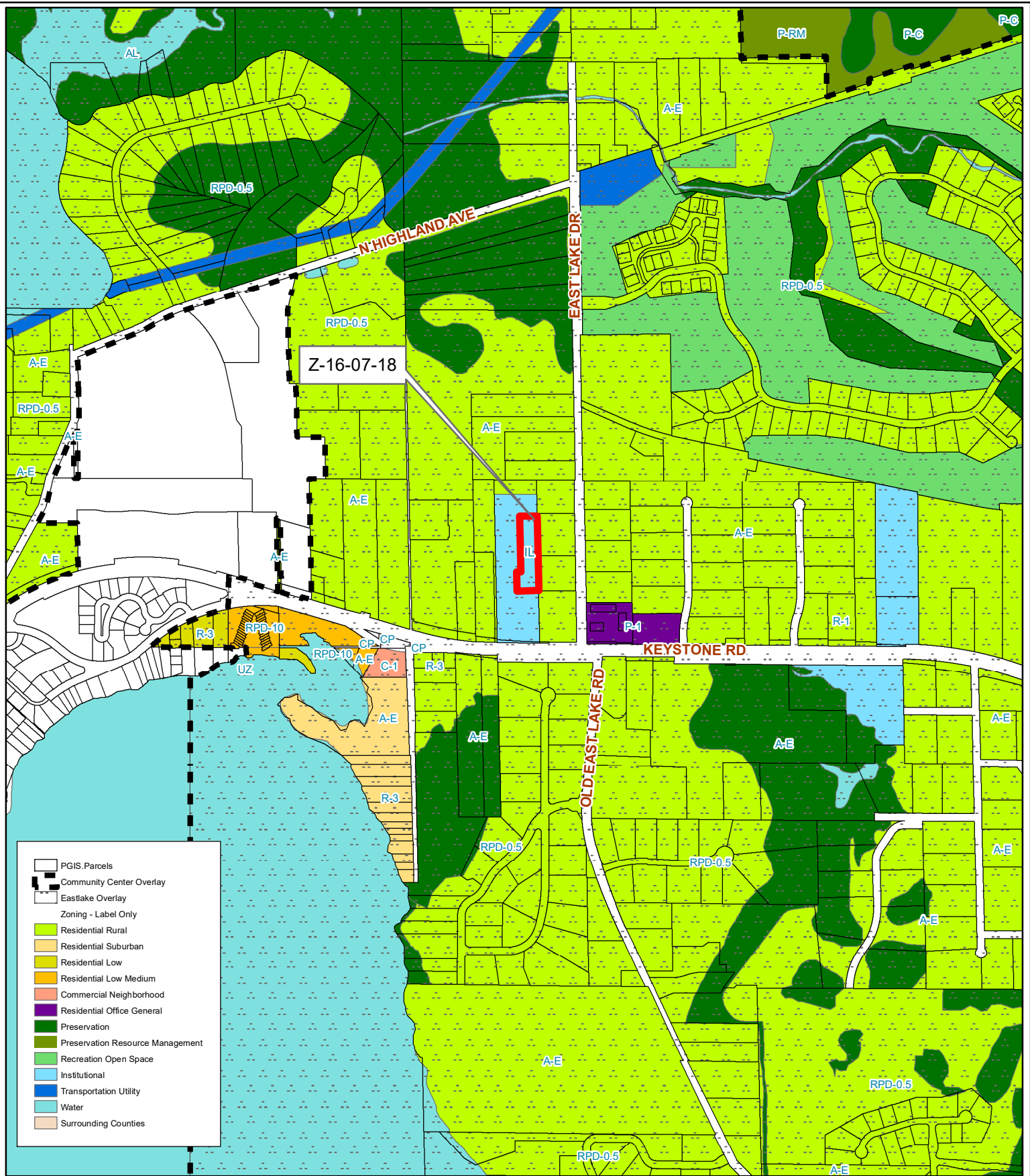
09/27/16/00000/230/0501

Prepared by: Pinellas County Planning Department



Date: 5/30/2018

1 inch = 0.19 miles



- PGIS Parcels
- Community Center Overlay
- Eastlake Overlay
- Zoning - Label Only
- Residential Rural
- Residential Suburban
- Residential Low
- Residential Low Medium
- Commercial Neighborhood
- Residential Office General
- Preservation
- Preservation Resource Management
- Recreation Open Space
- Institutional
- Transportation Utility
- Water
- Surrounding Counties

**Z-16-07-18**  
**Proposed Zoning**

**Zoning**  
**From:** A-E, Agricultural Estate Residential  
**To:** IL, Institutional Limited



09/27/16/00000/230/0501

Prepared by: Pinellas County Planning Department



Date: 5/30/2018

1 inch = 0.19 miles