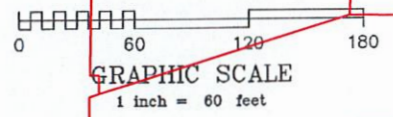


REUSE OF DOCUMENT: THE IDEAS & DESIGN CONCEPTS INCORPORATED WITHIN THIS DOCUMENT REPRESENTS A PROFESSIONAL SERVICE & IS THE PROPERTY OF GULF COAST CONSULTING, INC. & IS NOT TO BE USED FOR ANY OTHER PROJECT WITHOUT WRITTEN AUTHORIZATION FROM GULF COAST CONSULTING, INC.



**LEGAL DESCRIPTION**

LOTS 12, 13, 14, 15 AND 16, LAKE GARDENS SUBDIVISION, ACCORDING TO THE MAP OR PLAT THEREOF AS RECORDED IN PLAT BOOK 31, PAGE 63, OF THE PUBLIC RECORDS OF PINELLAS COUNTY, FLORIDA, TOGETHER WITH THE VACATED PORTION OF 101st AVENUE (LAKE GARDENS DRIVE - PLAT) LYING BETWEEN SAID LOTS 13, 14, 15 AND 16 AND BEING BOUND ON THE WEST BY THE SOUTHERLY EXTENSION OF THE WESTERLY BOUNDARY OF SAID LOT 16.

AND  
 UPLAND AND SUBMERGED LAND AND PART OF LOTS 3 & 4 IN N.E. 1/4, PINELLAS GROVES; BEGIN S.E. CORNER LOT 14, LAKE GARDENS SUBDIVISION; THENCE NORTH 100 FEET; THENCE N19°E 63.33 FEET; THENCE NORTH 80.07 FEET; THENCE S85°E 157.74 FEET; THENCE S81°E 103.92 FEET; THENCE N62°E ALONG CURVE TO LEFT, ARC OF 169.84 FEET AND RADIUS OF 95.76 FEET; THENCE N29°E 59.76 FEET; THENCE N47°E 100 FEET (SCALED); THENCE EAST 135.58 FEET; THENCE SOUTH 201 FEET; THENCE EAST 304.29 FEET; THENCE WEST 664.14 FEET; THENCE SOUTH 99.75 FEET; THENCE WEST 628.38 FEET; THENCE NORTH 269.43 FEET THENCE EAST 220 FEET TO POINT OF BEGINNING.

(UNOFFICIAL LEGAL DESCRIPTION PER PINELLAS COUNTY PROPERTY APPRAISER)

WETLAD LINE DATA		
LINE	BEARING	DISTANCE
J1	INTENTIONALLY DELETED	
J2	S20°18'13"E	26.25'M
J3	S06°59'08"W	39.40'M
J4	S60°24'42"E	23.62'M
J5	S40°03'02"E	35.83'M
J6	S74°33'43"E	26.54'M
J7	S84°08'36"E	32.49'M
J8	S68°37'34"E	44.46'M
J9	S56°06'16"E	23.74'M
J10	S86°42'29"E	49.19'M
J11	S51°33'28"E	9.37'M
J12	INTENTIONALLY DELETED	
J13	INTENTIONALLY DELETED	
J14	INTENTIONALLY DELETED	
J15	INTENTIONALLY DELETED	
J16	INTENTIONALLY DELETED	
J17	INTENTIONALLY DELETED	
J18	INTENTIONALLY DELETED	
J19	N73°22'10"E	24.79'M
J20	N67°53'34"E	29.16'M
J21	N58°42'28"E	21.46'M
J22	N63°04'22"E	34.19'M
J23	N58°15'10"E	36.79'M
J24	N40°22'00"E	20.05'M

**SURVEY ABBREVIATIONS**

A = ARC LENGTH  
 A/C = AIR CONDITIONER  
 AF = ALUMINUM FENCE  
 ALUM = ALUMINUM  
 ASP = ASPHALT  
 B/E = BASE FLOOD ELEVATION  
 BLDG = BUILDING  
 BLK = BLOCK  
 FFP = FLOOD PROTECTED PIPE  
 FRM = FRAME  
 FZL = FLOOD ZONE LINE  
 GAR = GARAGE  
 G/L = GROUND LEVEL  
 H/F = HIGH WATER FENCE  
 H/L = HIGH WATER LINE  
 HW = HIGHWAY

**GENERAL NOTES**

1.) THIS SURVEY HAS BEEN EXCLUSIVELY PREPARED FOR THE NAMED ENTITIES (THE "CERTIFIED PARTIES") SHOWN HEREON AND IS NOT TRANSFERABLE. NO OTHER PERSON OR ENTITY IS ENTITLED TO RELY UPON AND/OR RE-USE THIS SURVEY FOR ANY PURPOSE WITHOUT THE EXPRESSED, WRITTEN CONSENT OF GEORGE A. SHIMP & ASSOCIATES, INC. (THE "SURVEYOR") AND THE CERTIFYING PROFESSIONAL SURVEYOR AND MAPPER (THE "SIGNING SURVEYOR"), HERINAFTER COLLECTIVELY REFERRED TO AS "THE SURVEYOR". NOTHING HEREIN SHALL BE CONSTRUED TO GIVE

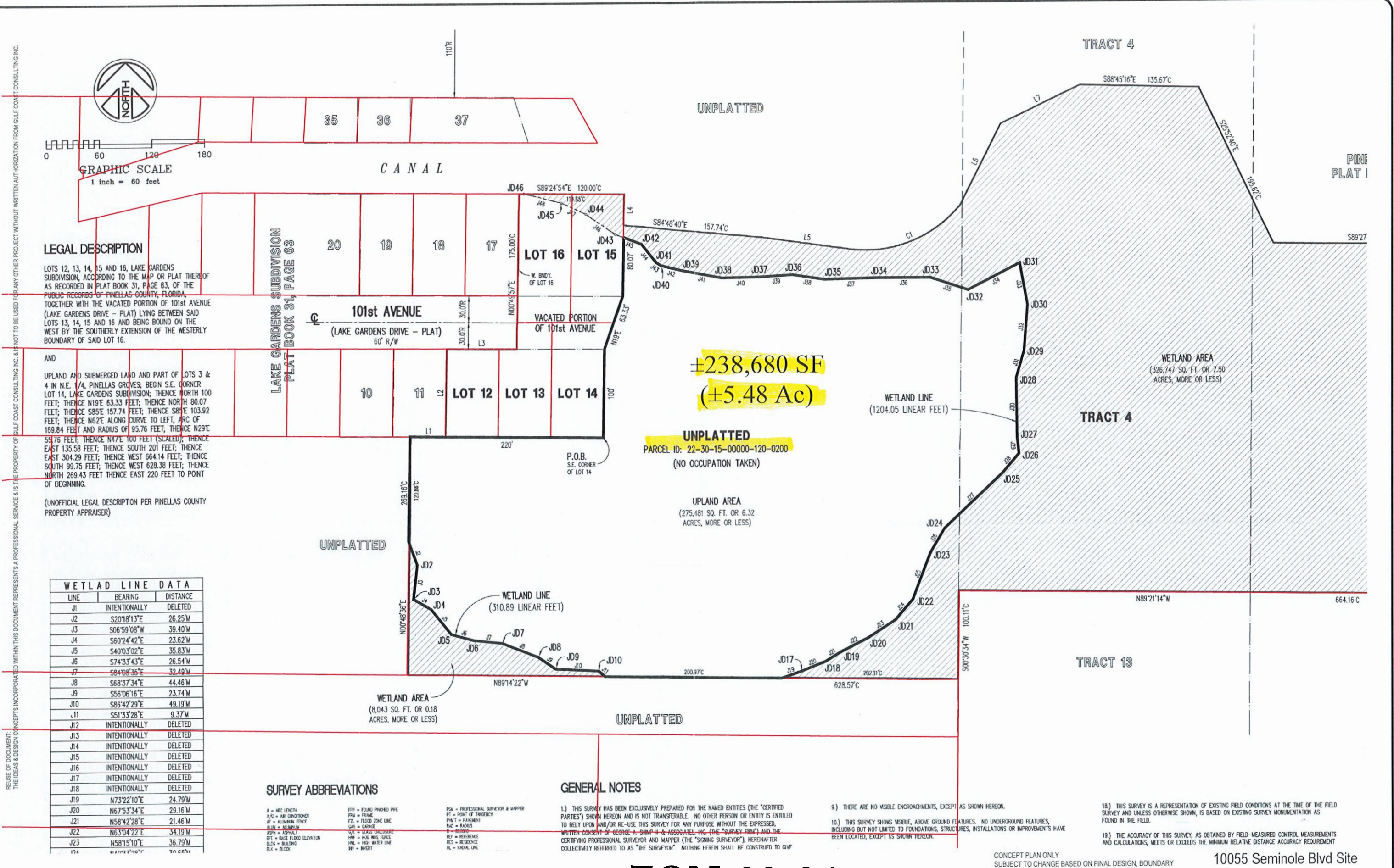
9.) THERE ARE NO VISIBLE ENCROACHMENTS, EXCEPT AS SHOWN HEREON.  
 10.) THIS SURVEY SHOWS VISIBLE, ABOVE GROUND FEATURES. NO UNDERGROUND FEATURES, INCLUDING BUT NOT LIMITED TO FOUNDATIONS, STRUCTURES, INSTALLATIONS OR IMPROVEMENTS HAVE BEEN LOCATED, EXCEPT AS SHOWN HEREON.

18.) THIS SURVEY IS A REPRESENTATION OF EXISTING FIELD CONDITIONS AT THE TIME OF THE FIELD SURVEY AND UNLESS OTHERWISE SHOWN, IS BASED ON EXISTING SURVEY MONUMENTATION AS FOUND IN THE FIELD.  
 19.) THE ACCURACY OF THIS SURVEY, AS OBTAINED BY FIELD-MEASURED CONTROL MEASUREMENTS AND CALCULATIONS, MEETS OR EXCEEDS THE MINIMUM RELATIVE DISTANCE ACCURACY REQUIREMENT

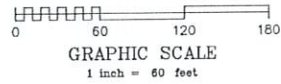
CONCEPT PLAN ONLY  
 SUBJECT TO CHANGE BASED ON FINAL DESIGN. BOUNDARY & TOPOGRAPHIC SURVEY AND JURISDICTIONAL WETLAND CONSTRAINTS. SUBJECT TO SITE PLAN APPROVAL.

10055 Seminole Blvd Site  
 Upland Exhibit

# ZON-22-04



© COPYRIGHT 2016  
ALL RIGHTS RESERVED  
George A. Shimp II & Associates, Inc.  
Anyone copying this document in any manner without the  
expressed consent of GEORGE A. SHIMP II & ASSOCIATES, INC.  
shall be prosecuted to the full extent of the law.  
DO NOT COPY OR REPRODUCE



**LEGAL DESCRIPTION**

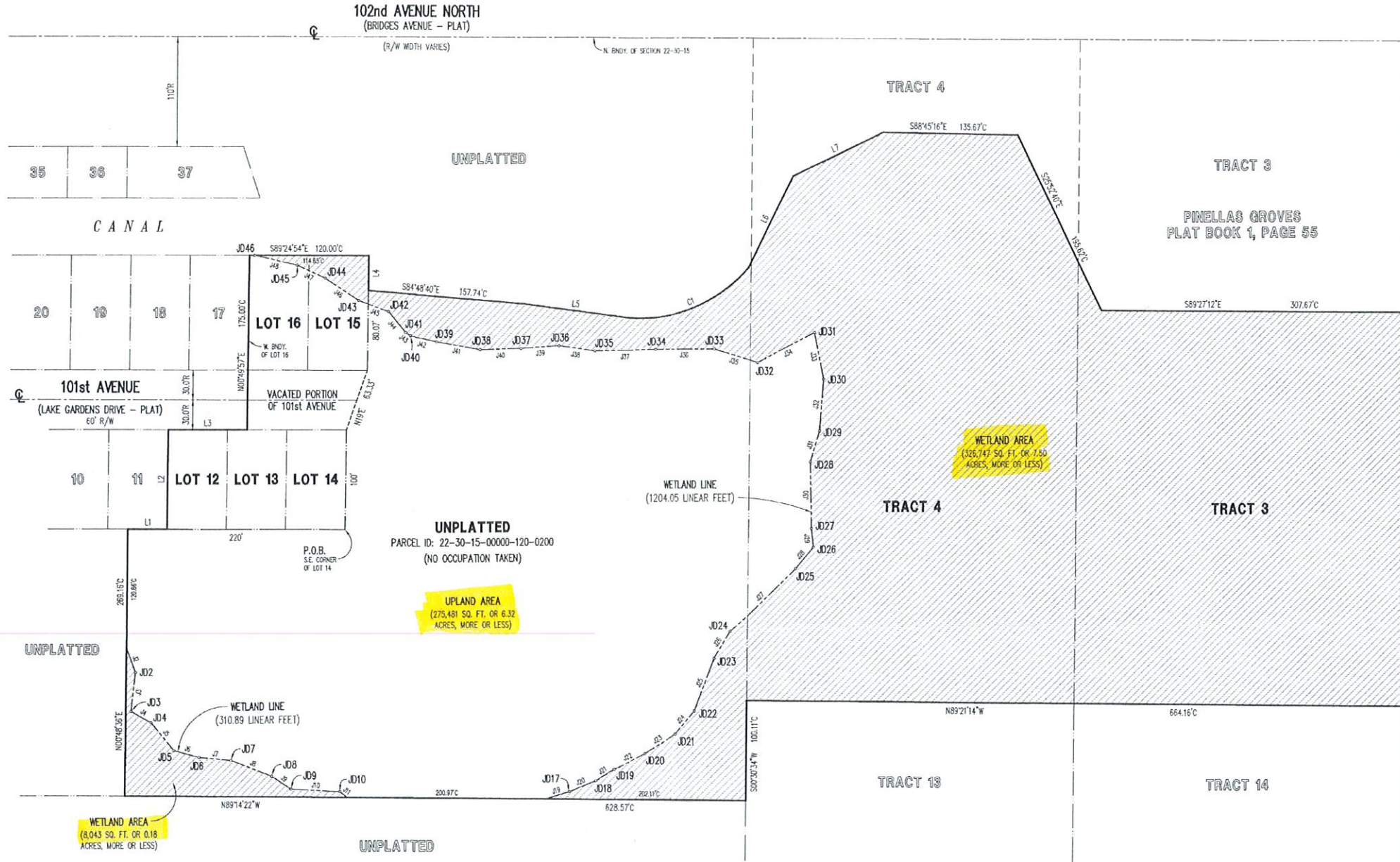
LOTS 12, 13, 14, 15 AND 16, LAKE GARDENS SUBDIVISION, ACCORDING TO THE MAP OR PLAT THEREOF AS RECORDED IN PLAT BOOK 31, PAGE 63, OF THE PUBLIC RECORDS OF PINELLAS COUNTY, FLORIDA, TOGETHER WITH THE VACATED PORTION OF 101st AVENUE (LAKE GARDENS DRIVE - PLAT) LYING BETWEEN SAID LOTS 13, 14, 15 AND 16 AND BEING BOUND ON THE WEST BY THE SOUTHERLY EXTENSION OF THE WESTERLY BOUNDARY OF SAID LOT 16.

AND  
UPLAND AND SUBMERGED LAND AND PART OF LOTS 3 & 4 IN N.E. 1/4, PINELLAS GROVES, BEGIN S.E. CORNER LOT 14, LAKE GARDENS SUBDIVISION, THENCE NORTH 100 FEET; THENCE N19E 63.33 FEET; THENCE NORTH 80.07 FEET; THENCE S85E 157.74 FEET; THENCE S85E 103.92 FEET; THENCE N19E ALONG CURVE TO LEFT, ARC OF 169.84 FEET AND RADIUS OF 95.76 FEET; THENCE N29E 55.76 FEET; THENCE N47E 100 FEET (SCALED); THENCE EAST 135.58 FEET; THENCE SOUTH 201 FEET; THENCE EAST 304.29 FEET; THENCE WEST 664.14 FEET; THENCE SOUTH 99.75 FEET; THENCE WEST 628.38 FEET; THENCE NORTH 269.43 FEET THENCE EAST 220 FEET TO POINT OF BEGINNING.

(UNOFFICIAL LEGAL DESCRIPTION PER PINELLAS COUNTY PROPERTY APPRAISER)

LINE	BEARING	DISTANCE
J1	INTENTIONALLY DELETED	
J2	S70°18'13"E	26.25M
J3	S06°59'08"W	39.40M
J4	S60°24'42"E	23.62M
J5	S40°03'02"E	35.83M
J6	S74°33'43"E	26.54M
J7	S84°08'35"E	32.49M
J8	S68°37'34"E	44.46M
J9	S56°06'16"E	23.74M
J10	S86°42'29"E	49.19M
J11	S51°35'28"E	9.37M
J12	INTENTIONALLY DELETED	
J13	INTENTIONALLY DELETED	
J14	INTENTIONALLY DELETED	
J15	INTENTIONALLY DELETED	
J16	INTENTIONALLY DELETED	
J17	INTENTIONALLY DELETED	
J18	INTENTIONALLY DELETED	
J19	N73°22'10"E	24.79M
J20	N67°53'34"E	29.15M
J21	N58°42'28"E	21.46M
J22	N63°04'22"E	34.19M
J23	N58°15'10"E	36.79M
J24	N40°33'28"E	30.65M
J25	N20°56'56"E	56.39M
J26	N30°07'37"E	31.49M
J27	N45°19'41"E	91.86M
J28	N40°21'21"E	28.25M
J29	N06°01'01"W	18.91M
J30	N01°01'30"W	66.79M
J31	N15°58'44"E	32.33M
J32	N04°13'09"E	52.38M
J33	N10°53'21"W	47.33M
J34	S63°00'23"W	65.77M
J35	N71°56'37"W	45.15M
J36	S89°57'43"W	60.24M
J37	S88°52'21"W	60.99M
J38	N81°33'11"W	36.56M
J39	S86°25'44"W	38.70M
J40	S88°45'16"W	41.99M
J41	N79°21'53"W	44.00M
J42	N77°26'11"W	27.23M
J43	N55°44'09"W	5.92M
J44	N38°48'24"W	27.07M
J45	N69°10'01"W	32.19M
J46	N56°00'16"W	40.43M
J47	N65°09'31"W	31.26M
J48	N76°21'57"W	43.75M

LAKE GARDENS SUBDIVISION  
PLAT BOOK 31, PAGE 63



- LINE L1  
S89°24'54"E - 39.74'C
  - LINE L2  
N07°49'57"E - 100.00'C
  - LINE L3  
S89°24'54"E - 79.98'C
  - LINE L4  
S00°49'57"W - 34.93'C
  - LINE L5  
S82°10'10"E - 103.92'C
  - LINE L6  
N26°47'36"E - 102.27'C
  - LINE L7  
N64°30'37"E - 100.31'C
- CURVE C1  
RADIUS = 140.34'C  
ARC = 138.47'C  
CHORD = 132.92'C  
CHD. BRG. = N66°26'51"E C

**SURVEY ABBREVIATIONS**

AC = AC LOCK	AD = ADJUSTED	AP = APPROXIMATE	AS = AS SHOWN
AL = ALUMINUM	BL = BRICK	BS = BRASS	BU = BURNED
AN = ANCHOR	BR = BRICK	BS = BRASS	BU = BURNED
AP = APPROXIMATE	AS = AS SHOWN	AD = ADJUSTED	AC = AC LOCK
AL = ALUMINUM	BL = BRICK	BS = BRASS	BU = BURNED
AN = ANCHOR	BR = BRICK	BS = BRASS	BU = BURNED
AP = APPROXIMATE	AS = AS SHOWN	AD = ADJUSTED	AC = AC LOCK
AL = ALUMINUM	BL = BRICK	BS = BRASS	BU = BURNED
AN = ANCHOR	BR = BRICK	BS = BRASS	BU = BURNED
AP = APPROXIMATE	AS = AS SHOWN	AD = ADJUSTED	AC = AC LOCK
AL = ALUMINUM	BL = BRICK	BS = BRASS	BU = BURNED
AN = ANCHOR	BR = BRICK	BS = BRASS	BU = BURNED
AP = APPROXIMATE	AS = AS SHOWN	AD = ADJUSTED	AC = AC LOCK
AL = ALUMINUM	BL = BRICK	BS = BRASS	BU = BURNED
AN = ANCHOR	BR = BRICK	BS = BRASS	BU = BURNED
AP = APPROXIMATE	AS = AS SHOWN	AD = ADJUSTED	AC = AC LOCK
AL = ALUMINUM	BL = BRICK	BS = BRASS	BU = BURNED
AN = ANCHOR	BR = BRICK	BS = BRASS	BU = BURNED
AP = APPROXIMATE	AS = AS SHOWN	AD = ADJUSTED	AC = AC LOCK
AL = ALUMINUM	BL = BRICK	BS = BRASS	BU = BURNED
AN = ANCHOR	BR = BRICK	BS = BRASS	BU = BURNED
AP = APPROXIMATE	AS = AS SHOWN	AD = ADJUSTED	AC = AC LOCK
AL = ALUMINUM	BL = BRICK	BS = BRASS	BU = BURNED
AN = ANCHOR	BR = BRICK	BS = BRASS	BU = BURNED
AP = APPROXIMATE	AS = AS SHOWN	AD = ADJUSTED	AC = AC LOCK
AL = ALUMINUM	BL = BRICK	BS = BRASS	BU = BURNED
AN = ANCHOR	BR = BRICK	BS = BRASS	BU = BURNED
AP = APPROXIMATE	AS = AS SHOWN	AD = ADJUSTED	AC = AC LOCK
AL = ALUMINUM	BL = BRICK	BS = BRASS	BU = BURNED
AN = ANCHOR	BR = BRICK	BS = BRASS	BU = BURNED
AP = APPROXIMATE	AS = AS SHOWN	AD = ADJUSTED	AC = AC LOCK
AL = ALUMINUM	BL = BRICK	BS = BRASS	BU = BURNED
AN = ANCHOR	BR = BRICK	BS = BRASS	BU = BURNED
AP = APPROXIMATE	AS = AS SHOWN	AD = ADJUSTED	AC = AC LOCK
AL = ALUMINUM	BL = BRICK	BS = BRASS	BU = BURNED
AN = ANCHOR	BR = BRICK	BS = BRASS	BU = BURNED
AP = APPROXIMATE	AS = AS SHOWN	AD = ADJUSTED	AC = AC LOCK
AL = ALUMINUM	BL = BRICK	BS = BRASS	BU = BURNED
AN = ANCHOR	BR = BRICK	BS = BRASS	BU = BURNED
AP = APPROXIMATE	AS = AS SHOWN	AD = ADJUSTED	AC = AC LOCK
AL = ALUMINUM	BL = BRICK	BS = BRASS	BU = BURNED
AN = ANCHOR	BR = BRICK	BS = BRASS	BU = BURNED
AP = APPROXIMATE	AS = AS SHOWN	AD = ADJUSTED	AC = AC LOCK
AL = ALUMINUM	BL = BRICK	BS = BRASS	BU = BURNED
AN = ANCHOR	BR = BRICK	BS = BRASS	BU = BURNED
AP = APPROXIMATE	AS = AS SHOWN	AD = ADJUSTED	AC = AC LOCK
AL = ALUMINUM	BL = BRICK	BS = BRASS	BU = BURNED
AN = ANCHOR	BR = BRICK	BS = BRASS	BU = BURNED
AP = APPROXIMATE	AS = AS SHOWN	AD = ADJUSTED	AC = AC LOCK
AL = ALUMINUM	BL = BRICK	BS = BRASS	BU = BURNED
AN = ANCHOR	BR = BRICK	BS = BRASS	BU = BURNED
AP = APPROXIMATE	AS = AS SHOWN	AD = ADJUSTED	AC = AC LOCK
AL = ALUMINUM	BL = BRICK	BS = BRASS	BU = BURNED
AN = ANCHOR	BR = BRICK	BS = BRASS	BU = BURNED
AP = APPROXIMATE	AS = AS SHOWN	AD = ADJUSTED	AC = AC LOCK
AL = ALUMINUM	BL = BRICK	BS = BRASS	BU = BURNED
AN = ANCHOR	BR = BRICK	BS = BRASS	BU = BURNED
AP = APPROXIMATE	AS = AS SHOWN	AD = ADJUSTED	AC = AC LOCK
AL = ALUMINUM	BL = BRICK	BS = BRASS	BU = BURNED
AN = ANCHOR	BR = BRICK	BS = BRASS	BU = BURNED
AP = APPROXIMATE	AS = AS SHOWN	AD = ADJUSTED	AC = AC LOCK
AL = ALUMINUM	BL = BRICK	BS = BRASS	BU = BURNED
AN = ANCHOR	BR = BRICK	BS = BRASS	BU = BURNED
AP = APPROXIMATE	AS = AS SHOWN	AD = ADJUSTED	AC = AC LOCK
AL = ALUMINUM	BL = BRICK	BS = BRASS	BU = BURNED
AN = ANCHOR	BR = BRICK	BS = BRASS	BU = BURNED
AP = APPROXIMATE	AS = AS SHOWN	AD = ADJUSTED	AC = AC LOCK
AL = ALUMINUM	BL = BRICK	BS = BRASS	BU = BURNED
AN = ANCHOR	BR = BRICK	BS = BRASS	BU = BURNED
AP = APPROXIMATE	AS = AS SHOWN	AD = ADJUSTED	AC = AC LOCK
AL = ALUMINUM	BL = BRICK	BS = BRASS	BU = BURNED
AN = ANCHOR	BR = BRICK	BS = BRASS	BU = BURNED
AP = APPROXIMATE	AS = AS SHOWN	AD = ADJUSTED	AC = AC LOCK
AL = ALUMINUM	BL = BRICK	BS = BRASS	BU = BURNED
AN = ANCHOR	BR = BRICK	BS = BRASS	BU = BURNED
AP = APPROXIMATE	AS = AS SHOWN	AD = ADJUSTED	AC = AC LOCK
AL = ALUMINUM	BL = BRICK	BS = BRASS	BU = BURNED
AN = ANCHOR	BR = BRICK	BS = BRASS	BU = BURNED
AP = APPROXIMATE	AS = AS SHOWN	AD = ADJUSTED	AC = AC LOCK
AL = ALUMINUM	BL = BRICK	BS = BRASS	BU = BURNED
AN = ANCHOR	BR = BRICK	BS = BRASS	BU = BURNED
AP = APPROXIMATE	AS = AS SHOWN	AD = ADJUSTED	AC = AC LOCK
AL = ALUMINUM	BL = BRICK	BS = BRASS	BU = BURNED
AN = ANCHOR	BR = BRICK	BS = BRASS	BU = BURNED
AP = APPROXIMATE	AS = AS SHOWN	AD = ADJUSTED	AC = AC LOCK
AL = ALUMINUM	BL = BRICK	BS = BRASS	BU = BURNED
AN = ANCHOR	BR = BRICK	BS = BRASS	BU = BURNED
AP = APPROXIMATE	AS = AS SHOWN	AD = ADJUSTED	AC = AC LOCK
AL = ALUMINUM	BL = BRICK	BS = BRASS	BU = BURNED
AN = ANCHOR	BR = BRICK	BS = BRASS	BU = BURNED
AP = APPROXIMATE	AS = AS SHOWN	AD = ADJUSTED	AC = AC LOCK
AL = ALUMINUM	BL = BRICK	BS = BRASS	BU = BURNED
AN = ANCHOR	BR = BRICK	BS = BRASS	BU = BURNED
AP = APPROXIMATE	AS = AS SHOWN	AD = ADJUSTED	AC = AC LOCK
AL = ALUMINUM	BL = BRICK	BS = BRASS	BU = BURNED
AN = ANCHOR	BR = BRICK	BS = BRASS	BU = BURNED
AP = APPROXIMATE	AS = AS SHOWN	AD = ADJUSTED	AC = AC LOCK
AL = ALUMINUM	BL = BRICK	BS = BRASS	BU = BURNED
AN = ANCHOR	BR = BRICK	BS = BRASS	BU = BURNED
AP = APPROXIMATE	AS = AS SHOWN	AD = ADJUSTED	AC = AC LOCK
AL = ALUMINUM	BL = BRICK	BS = BRASS	BU = BURNED
AN = ANCHOR	BR = BRICK	BS = BRASS	BU = BURNED
AP = APPROXIMATE	AS = AS SHOWN	AD = ADJUSTED	AC = AC LOCK
AL = ALUMINUM	BL = BRICK	BS = BRASS	BU = BURNED
AN = ANCHOR	BR = BRICK	BS = BRASS	BU = BURNED
AP = APPROXIMATE	AS = AS SHOWN	AD = ADJUSTED	AC = AC LOCK
AL = ALUMINUM	BL = BRICK	BS = BRASS	BU = BURNED
AN = ANCHOR	BR = BRICK	BS = BRASS	BU = BURNED
AP = APPROXIMATE	AS = AS SHOWN	AD = ADJUSTED	AC = AC LOCK
AL = ALUMINUM	BL = BRICK	BS = BRASS	BU = BURNED
AN = ANCHOR	BR = BRICK	BS = BRASS	BU = BURNED
AP = APPROXIMATE	AS = AS SHOWN	AD = ADJUSTED	AC = AC LOCK
AL = ALUMINUM	BL = BRICK	BS = BRASS	BU = BURNED
AN = ANCHOR	BR = BRICK	BS = BRASS	BU = BURNED
AP = APPROXIMATE	AS = AS SHOWN	AD = ADJUSTED	AC = AC LOCK
AL = ALUMINUM	BL = BRICK	BS = BRASS	BU = BURNED
AN = ANCHOR	BR = BRICK	BS = BRASS	BU = BURNED
AP = APPROXIMATE	AS = AS SHOWN	AD = ADJUSTED	AC = AC LOCK
AL = ALUMINUM	BL = BRICK	BS = BRASS	BU = BURNED
AN = ANCHOR	BR = BRICK	BS = BRASS	BU = BURNED
AP = APPROXIMATE	AS = AS SHOWN	AD = ADJUSTED	AC = AC LOCK
AL = ALUMINUM	BL = BRICK	BS = BRASS	BU = BURNED
AN = ANCHOR	BR = BRICK	BS = BRASS	BU = BURNED
AP = APPROXIMATE	AS = AS SHOWN	AD = ADJUSTED	AC = AC LOCK
AL = ALUMINUM	BL = BRICK	BS = BRASS	BU = BURNED
AN = ANCHOR	BR = BRICK	BS = BRASS	BU = BURNED
AP = APPROXIMATE	AS = AS SHOWN	AD = ADJUSTED	AC = AC LOCK
AL = ALUMINUM	BL = BRICK	BS = BRASS	BU = BURNED
AN = ANCHOR	BR = BRICK	BS = BRASS	BU = BURNED
AP = APPROXIMATE	AS = AS SHOWN	AD = ADJUSTED	AC = AC LOCK
AL = ALUMINUM	BL = BRICK	BS = BRASS	BU = BURNED
AN = ANCHOR	BR = BRICK	BS = BRASS	BU = BURNED
AP = APPROXIMATE	AS = AS SHOWN	AD = ADJUSTED	AC = AC LOCK
AL = ALUMINUM	BL = BRICK	BS = BRASS	BU = BURNED
AN = ANCHOR	BR = BRICK	BS = BRASS	BU = BURNED
AP = APPROXIMATE	AS = AS SHOWN	AD = ADJUSTED	AC = AC LOCK
AL = ALUMINUM	BL = BRICK	BS = BRASS	BU = BURNED
AN = ANCHOR	BR = BRICK	BS = BRASS	BU = BURNED
AP = APPROXIMATE	AS = AS SHOWN	AD = ADJUSTED	AC = AC LOCK
AL = ALUMINUM	BL = BRICK	BS = BRASS	BU = BURNED
AN = ANCHOR	BR = BRICK	BS = BRASS	BU = BURNED
AP = APPROXIMATE	AS = AS SHOWN	AD = ADJUSTED	AC = AC LOCK
AL = ALUMINUM	BL = BRICK	BS = BRASS	BU = BURNED
AN = ANCHOR	BR = BRICK	BS = BRASS	BU = BURNED
AP = APPROXIMATE	AS = AS SHOWN	AD = ADJUSTED	AC = AC LOCK
AL = ALUMINUM	BL = BRICK	BS = BRASS	BU = BURNED
AN = ANCHOR	BR = BRICK	BS = BRASS	BU = BURNED
AP = APPROXIMATE	AS = AS SHOWN	AD = ADJUSTED	AC = AC LOCK
AL = ALUMINUM	BL = BRICK	BS = BRASS	BU = BURNED
AN = ANCHOR	BR = BRICK	BS = BRASS	BU = BURNED
AP = APPROXIMATE	AS = AS SHOWN	AD = ADJUSTED	AC = AC LOCK
AL = ALUMINUM	BL = BRICK	BS = BRASS	BU = BURNED
AN = ANCHOR	BR = BRICK	BS = BRASS	BU = BURNED
AP = APPROXIMATE	AS = AS SHOWN	AD = ADJUSTED	AC = AC LOCK
AL = ALUMINUM	BL = BRICK	BS = BRASS	BU = BURNED
AN = ANCHOR	BR = BRICK	BS = BRASS	BU = BURNED
AP = APPROXIMATE	AS = AS SHOWN	AD = ADJUSTED	AC = AC LOCK
AL = ALUMINUM	BL = BRICK	BS = BRASS	BU = BURNED
AN = ANCHOR	BR = BRICK	BS = BRASS	BU = BURNED
AP = APPROXIMATE	AS = AS SHOWN	AD = ADJUSTED	AC = AC LOCK
AL = ALUMINUM	BL = BRICK	BS = BRASS	BU = BURNED
AN = ANCHOR	BR = BRICK	BS = BRASS	BU = BURNED
AP = APPROXIMATE	AS = AS SHOWN	AD = ADJUSTED	AC = AC LOCK
AL = ALUMINUM	BL = BRICK	BS = BRASS	BU = BURNED
AN = ANCHOR	BR = BRICK	BS = BRASS	BU = BURNED
AP = APPROXIMATE	AS = AS SHOWN	AD = ADJUSTED	AC = AC LOCK
AL = ALUMINUM	BL = BRICK	BS = BRASS	BU = BURNED
AN = ANCHOR	BR = BRICK	BS = BRASS	BU = BURNED
AP = APPROXIMATE	AS = AS SHOWN	AD = ADJUSTED	AC = AC LOCK
AL = ALUMINUM	BL = BRICK	BS = BRASS	BU = BURNED
AN = ANCHOR	BR = BRICK	BS = BRASS	BU = BURNED
AP = APPROXIMATE	AS = AS SHOWN	AD = ADJUSTED	AC = AC LOCK
AL = ALUMINUM	BL = BRICK	BS = BRASS	BU = BURNED
AN = ANCHOR	BR = BRICK	BS = BRASS	BU = BURNED
AP = APPROXIMATE	AS = AS SHOWN	AD = ADJUSTED	AC = AC LOCK
AL = ALUMINUM	BL = BRICK	BS = BRASS	BU = BURNED
AN = ANCHOR	BR = BRICK	BS = BRASS	BU = BURNED
AP = APPROXIMATE	AS = AS SHOWN	AD = ADJUSTED	AC = AC LOCK
AL = ALUMINUM	BL = BRICK	BS = BRASS	BU = BURNED
AN = ANCHOR	BR = BRICK	BS = BRASS	BU = BURNED
AP = APPROXIMATE	AS = AS SHOWN		