

Map 1 - Location

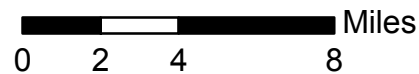
CASE #: CW19-01

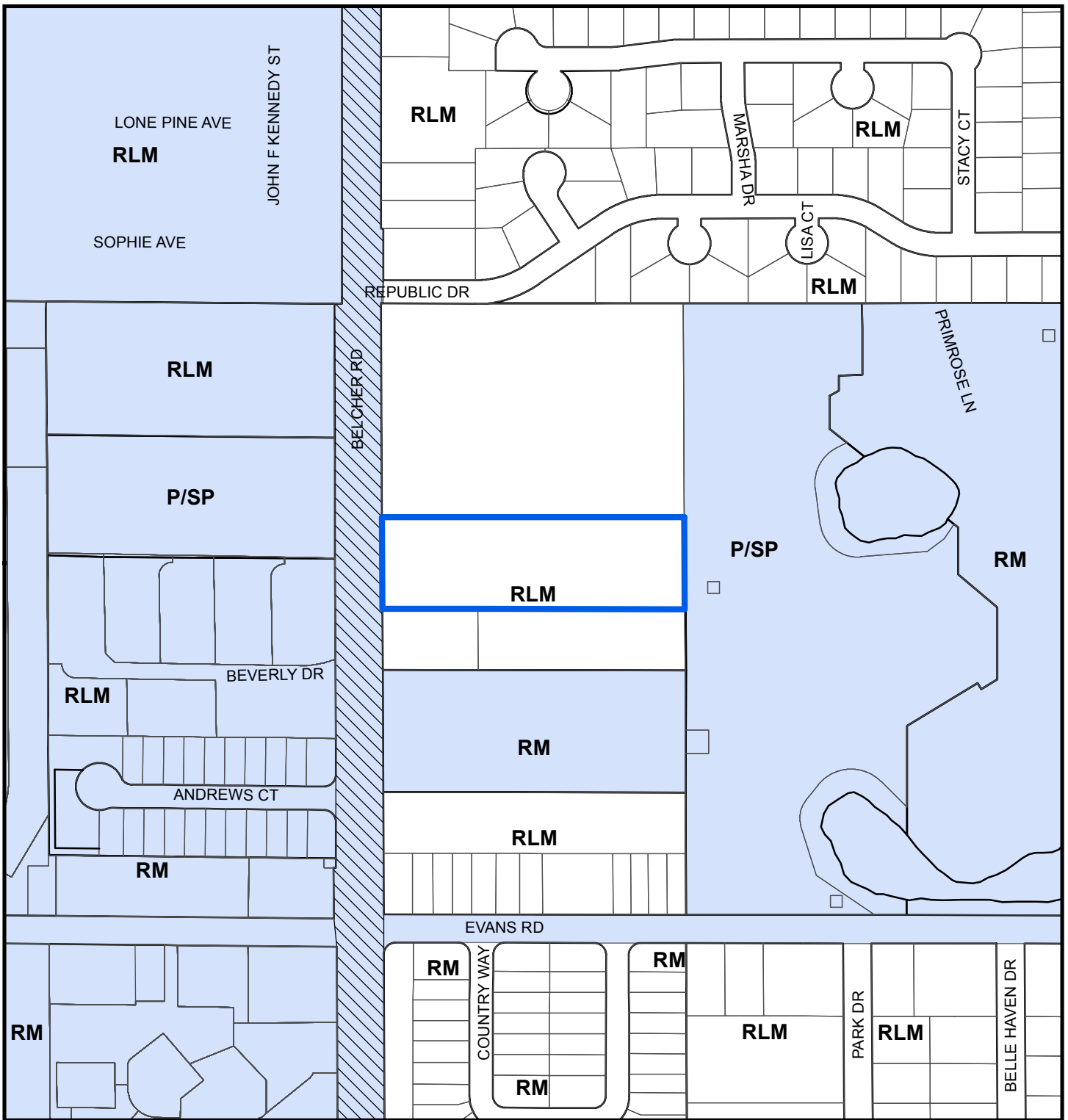
FROM: Residential Low Medium

AREA: 2.9 Acres

JURISDICTION: Pinellas County

TO: Public/Semi-Public





Map 2 - Current Countywide Plan Map & Jurisdictional Map

CASE #: CW19-01

FROM: Residential Low Medium

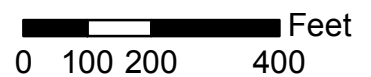
AREA: 2.9 Acres

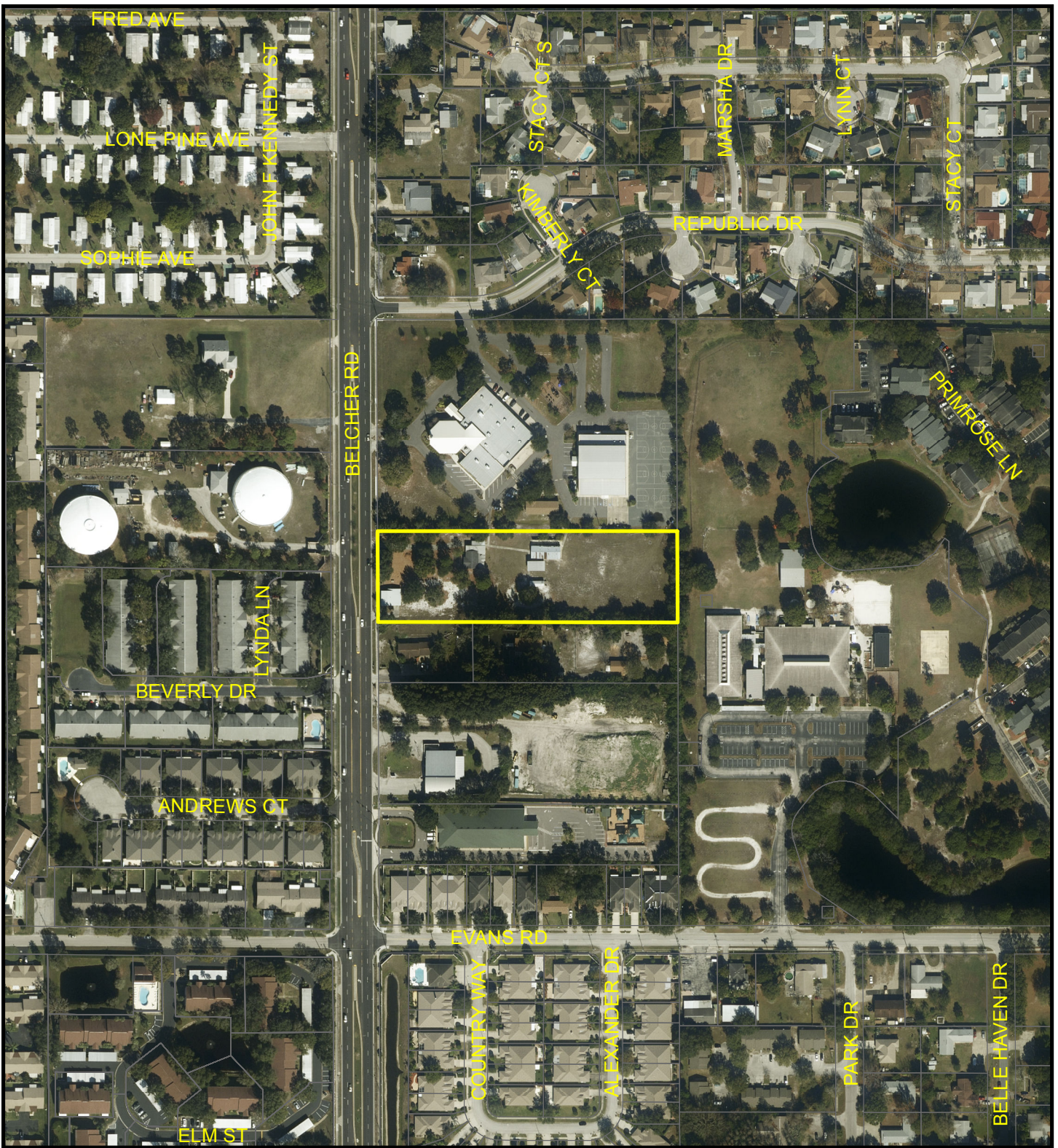
JURISDICTION: Pinellas County

TO: Public/Semi-Public

LEGEND:

- Dunedin
- Unincorporated





Map 3 - Aerial

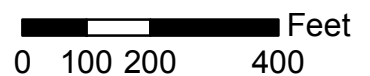
CASE #: CW19-01

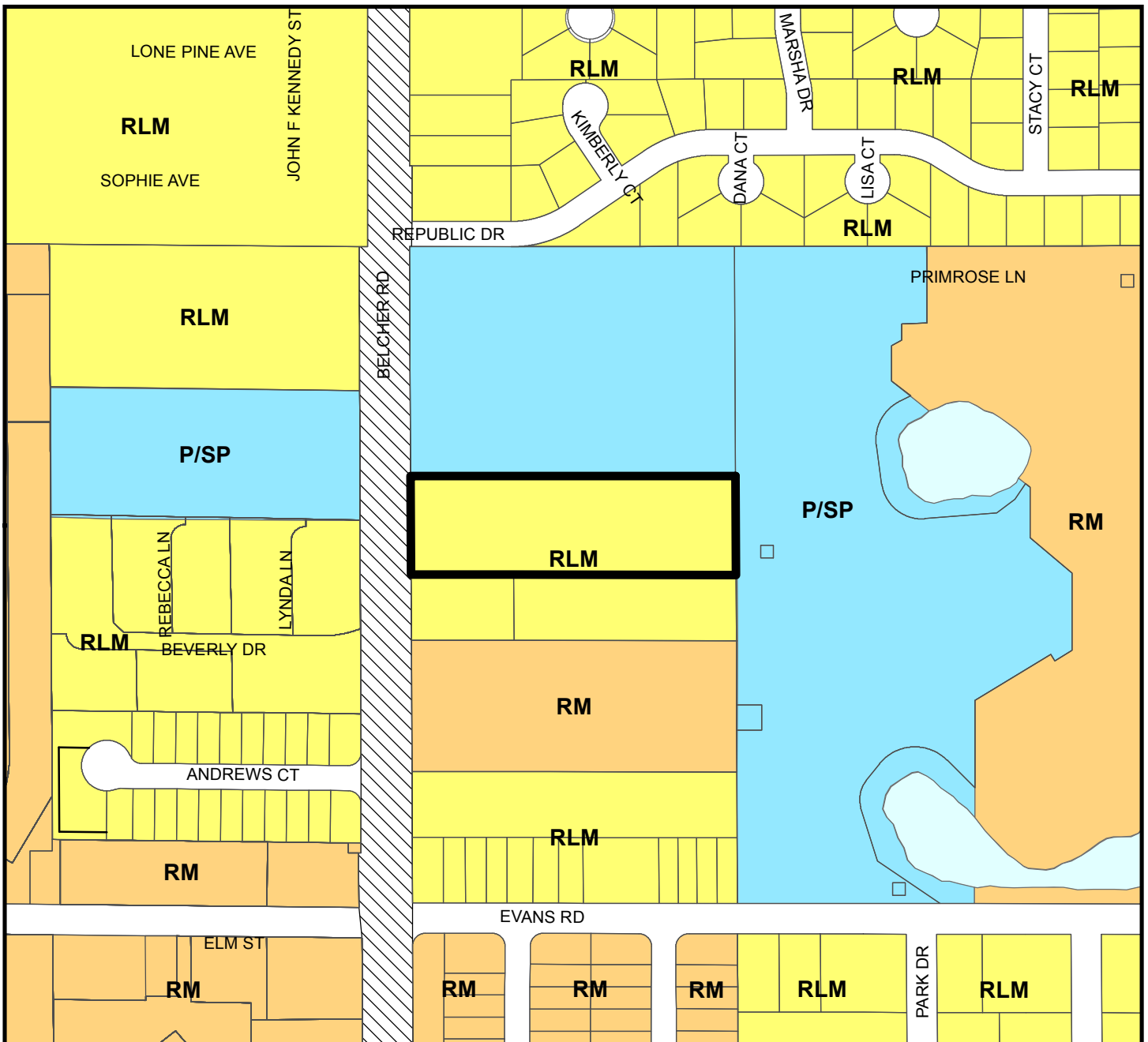
FROM: Residential Low Medium

AREA: 2.9 Acres

JURISDICTION: Pinellas County

TO: Public/Semi-Public





Countywide Plan Map Categories

- Residential Low Medium
- Public/Semi-Public
- Residential Medium
- Scenic/Noncommercial Corridor

Map 4 - Current Countywide Plan Map

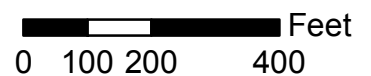
CASE #: CW19-01

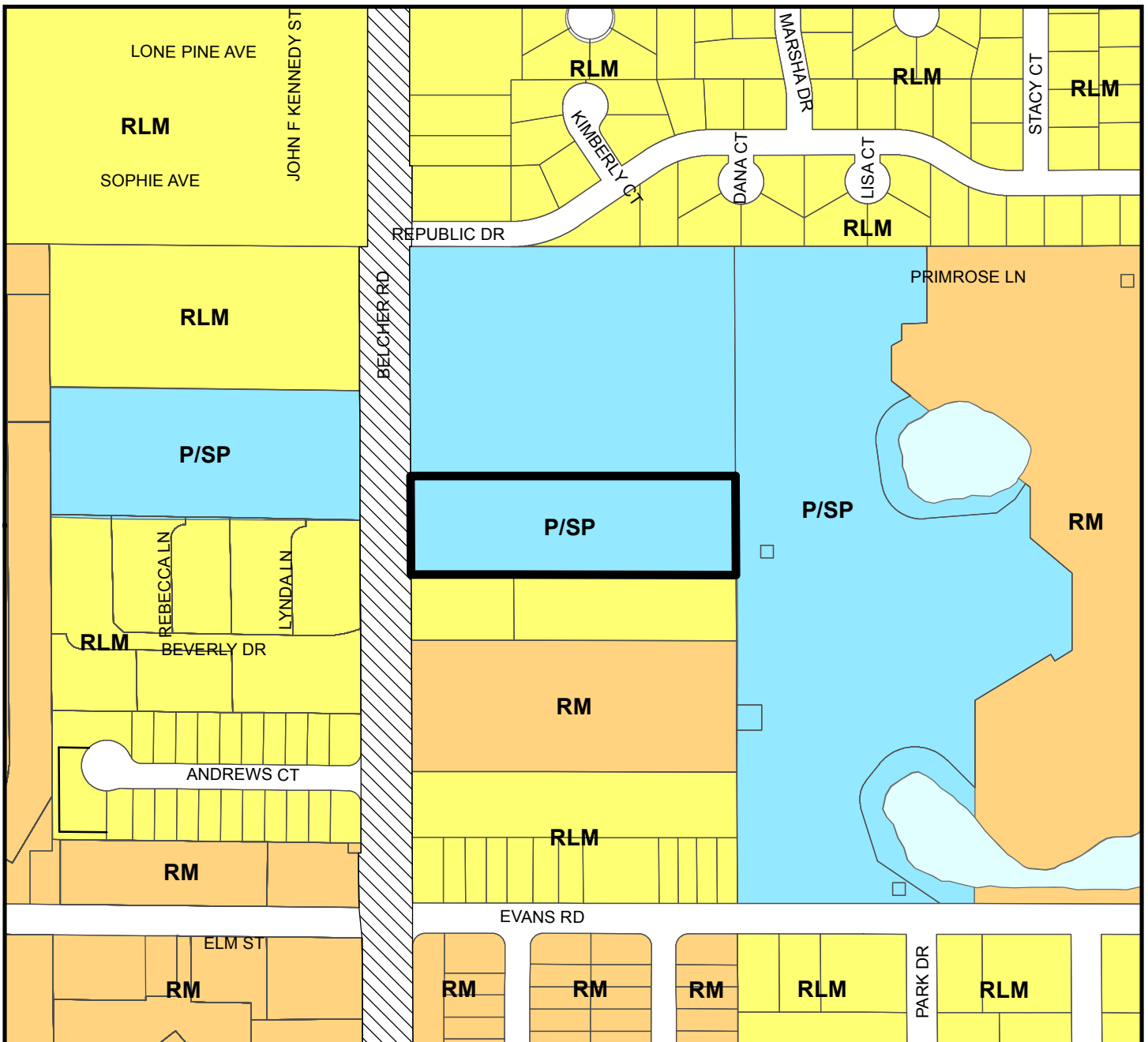
FROM: Residential Low Medium

AREA: 2.9 Acres

JURISDICTION: Pinellas County

TO: Public/Semi-Public





Countywide Plan Map Categories

- Residential Low Medium
- Residential Medium
- Public/Semi-Public
- Scenic/Noncommercial Corridor

Map 5 - Proposed Countywide Plan Map

CASE #: CW19-01

FROM: Residential Low Medium

AREA: 2.9 Acres

JURISDICTION: Pinellas County

TO: Public/Semi-Public

