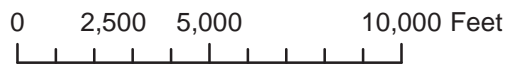
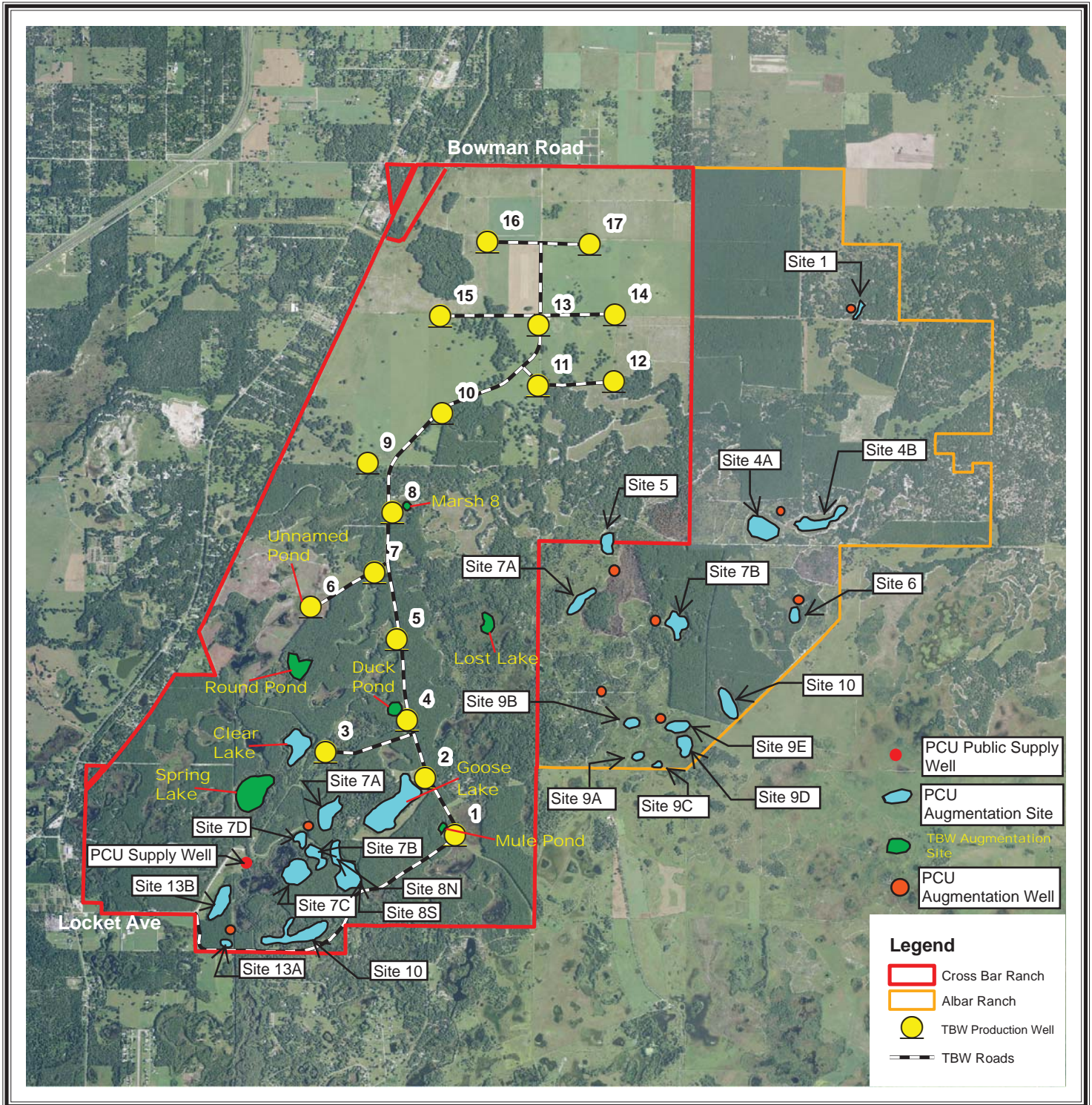


Roughly Bound Sites and Public Supply Well



ATTACHMENT 5

NOTICE:

This map is not a survey. Therefore, any derived acreage numbers on this map or accompanying report are approximate and should only be used for planning and management.

NATURAL RESOURCE
 PLANNING SERVICES, INC.

Pinellas County Utilities
Cross Bar - Albar Ranch

This map is not suitable for engineering design or construction.
Further, the use of any associated acreage numbers for sales
or negotiations is entirely at the risk of the buyer and seller.

Sections 12-14, 22-27, 24-36; T 24 S; R 18 E
Sections 1-3; T 25 S; R 18 E
Sections 7-9, 16-21, 29, 30; T 24 S; R 19 E
P.O. Box 564
Pasco County, Florida
(352) 588-2580

Projection: NAD 1983 UTM Zone 17 North
2013 Ortho Imagery Aerial Map Edited on: 04/03/16
Map Scale: 1"= 5,000 ft Map Created by: E. Givens
Map Modified by: PCU 12/7/16