

**EXHIBIT N**

**LUMP SUM AMENDMENT AGREEMENT FORM**

Pursuant to Sections 3B and 5A of the Design Build Agreement, dated FEB. 25, 2020, between Pinellas County, Florida ("Owner") and "Design Builder", for the design and construction of the ("Project"), Owner and Design Builder establish the Lump Sum Price and Contract Time for all the Work as set forth below:

**ARTICLE 1**

**SCOPE OF WORK**

The scope of the Work consists of the design and construction of the Project in accordance with the Agreement, this Amendment and other Contract Documents listed as Attachments 1 through 6 below, which are hereby incorporated into and made a part of the Amendment by this reference:

Attachment Number	Description	Pages	Dated
1.	List of Drawings and Specifications	1 through 5	12/20/2019
2.	Schedule of Values	1 through 3	12/24/2019
3.	Clarifications, & Exclusions	1 through 2	12/24/2019
4.	Completion Schedule	1 through 6	12/24/2019
5.	List of Subcontractors and Major Suppliers	1 through 1	12/24/2019
6.	Allowances	1 through 1	12/20/2019
7.	Potential Direct Purchase Items	1 through 1	12/24/2019

## DIRECT PURCHASES

The Owner, at its sole discretion, may elect to directly purchase materials and/or equipment included in the Guaranteed Maximum Price in order to take advantage of tax savings. Should the Owner elect to purchase materials and/or equipment directly, the general procedure shall be as follows:

1. All subcontracts shall be competitively bid by the Design Builder as outlined in other sections of this Agreement.
2. Each selected subcontractor shall submit a documented list of materials and/or equipment in the scope of its work in excess of \$15,000 along with the amount of sales tax applicable to such material and/or equipment.
3. The Design Builder shall forward these lists to the Owner, and the Owner shall obtain a purchase order for each item.
4. Once purchase orders have been obtained by the Owner for direct payment of these items, the Design Builder shall remove their direct cost from the schedule of Values accompanying its monthly pay applications. Tax savings realized from the Owner's direct purchase of each item, shall be transferred in the Schedule of Values to the line item for the Owner's Contingency. No retainage will be held on Direct Purchase material.
5. The Design Builder will order the materials as approved by the Owner (County Project Manager).
6. Invoices will be delivered directly to the Design Builder.
7. The Design Builder and the Owner will sign off on the packing slips to ensure materials ordered were received.
8. Design Builder will match the invoices to the packing slips and submit to the Owner (Pinellas County's Finance Department) via email to [ClerkFinanceDivisionFixedAssets@co.pinellas.fl.us](mailto:ClerkFinanceDivisionFixedAssets@co.pinellas.fl.us) to ensure the vendor/subcontractor is paid timely. The invoices must be received in a timely manner in order to comply with Section 218.735, *Florida Statutes* "Local Government Prompt Payment Act". Design Builder should date and time stamp all direct purchases invoices.

## ARTICLE 2

### LUMP SUM PRICE

2.1 The Lump Sum Price for the Work, as defined in Section 3B of the Agreement, is **Twenty Four Million, Seven Hundred and Ten Thousand, Eight Hundred and Twenty Eight Dollars (\$24,710,828.00)**.

2.2 Monthly installment payment of the Lump Sum Price shall be based upon the percent completion of the designated portion of the Work for each particular month.

2.3 In order to efficiently and timely address certain Change Order situations that may arise during Phase 2, the parties have agreed to establish an Owner controlled contingency within the Lump Sum Price in the amount of **One Million, Two Hundred Thousand Dollars (\$1,200,000.00)** ("Owner's Contingency"). The Design Builder acknowledges and agrees that any change work which is to be charged against the Owner's Contingency must be approved in advance in a Change Order or Construction Change Directive signed by County Project Manager. The Owner reserves the right, at its sole discretion, to withhold its consent on Owner's Contingency expenditures. Unused Owner's Contingency remaining at Substantial Completion will be deducted from the Lump Sum Price. Design Builder has no entitlement to any portion of any unused Owner's Contingency.

2.4 If the parties agree to establish Allowances within the Lump Sum Price, said Allowances items and amounts will be identified in Attachment 6. Design Builder shall not proceed with any portion of the Work associated with the aforesaid Allowances ("Allowance Work") without first obtaining Owner's express written authorization to proceed with said Allowance Work. All unused allowance will be returned to Owner

2.5 Design Builder recognizes that this Contract includes work for trench excavation in excess of five feet deep. Design Builder acknowledges the requirements set forth in Section 553.63 of the Florida Statutes titled Trench Safety Act. Design Builder certifies that the required trench safety standards will be in effect during the period of construction of the Project and Design Builder agrees to comply with all such required trench safety standards.

2.5.1 The amount of **Five Thousand Dollars (\$5,000.00)** has been separately identified in Attachment 2, Schedule of Values, for the cost of compliance with the required trench safety standards; said amount is included within the Lump Sum Price.

## ARTICLE 3

### CONTRACT TIME

3.1 The Phase 2 Commencement Date for the Work is **April 1, 2020**. The total period of time beginning with the Phase 2 Commencement Date through the date required for Substantial Completion of the Work is **720 days** ("Contract Time"). THE SUBSTANTIAL COMPLETION DATE IS THEREFORE ESTABLISHED AS **March 21, 2022**.

3.2 Pursuant to this Agreement, the parties have established a liquidated damage rate for reasons stated therein, which the parties acknowledge and agree apply to this Amendment and Design Builder's responsibility to complete the Work within the Contract Time as stated herein. Accordingly, the liquidated damage rate established in this Agreement shall be assessed from Design Builder for each calendar day Design Builder fails to achieve Substantial Completion for the Designated Work within the Contract Time.



**ARTICLE 4**

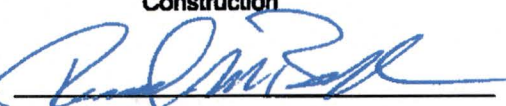
**MISCELLANEOUS**

4.1 Except as expressly modified herein, the terms and conditions of the Agreement remain unchanged. In the event of a conflict between the terms of this Amendment and those of the Agreement, Owner and Design Builder agree that the terms of this Amendment shall prevail and control.

Owner Pinellas County by and through its Board of  
County Commissioners

Design Builder Garney Companies, Inc. dba Garney  
Construction

By: 

By: 

Print Name: PATRICIA GERARD

Print Name: Timothy M Behler

Date: 2-25-20

Date: 1/23/2020

APPROVED AS TO FORM

ATTEST: KEN BURKE, CLERK

By:   
Office of the County Attorney

By:   
Deputy Clerk





# Attachment #1 - List of Drawings and Specifications



SOUTH CROSS BAYOU AWRF  
DESIGN BUILD HEADWORKS AND GRIT REMOVAL PROEJCT  
CONSTRUCTION DOCUMENTS - 70% DRAWINGS

Contract # 178-0001-NC(SS)  
South Cross Bayou AWRF Design Build  
Headworks and Grit Removal Project

Drawing No.	Drawing Title	Date
<b>General</b>		
G-0	COVER PAGE	December 2019
G-1	SHEET INDEX	December 2019
G-2	OVERALL EXISTING SITE PLAN	December 2019
G-3	HYDRAULIC PROFILE	December 2019
<b>Civil</b>		
C-1	ABBREVIATION, LEGEND AND SUE TABLE	December 2019
C-2	NOTES	December 2019
C-3	SITE SURVEY AND CONTROL PLAN	December 2019
C-4	TEMPORARY ROAD CLOSURE AND SITE TRAFFIC CONTROL PLAN	December 2019
C-5	NOT INCLUDED	December 2019
C-6	TEMPORARY GRAVITY BYPASS PIPING PLAN	December 2019
C-7	SOUTH GRIT BUILDING TEMP PIPING CONNECTION PLAN AND DETAILS	December 2019
C-8	NORTH GRIT BUILDING TEMP PIPING CONNECTION PLAN AND DETAILS	December 2019
C-9	NORTH AND SOUTH GRIT BUILDING CONNECTION TEMP PIPING ELEVATIONS	December 2019
C-10	EXISTING SITE DEMO PLAN	December 2019
C-11	PROPOSED YARD PIPING PLAN	December 2019
C-12	PROPOSED PAVING, GRADING AND DRAINAGE PLAN	December 2019
C-13	SITE-CIVIL DETAILS (1)	December 2019
C-14	SITE-CIVIL DETAILS (2)	December 2019
<b>Mechanical</b>		
M-1	PROCESS FLOW DIAGRAM	December 2019
M-2	OVERALL LAYOUT - KEY PLAN	December 2019
M-3	INTERMEDIATE LEVEL PLAN AND SCHEDULE	December 2019
M-4	OVERALL SCREEN SECTION	December 2019
M-5	VORTEX GRIT AREA - PLAN	December 2019
M-6	OVERALL BYPASS SECTION	December 2019
M-7	FINE SCREEN AREA - PLAN	December 2019
M-8	FLOW METERS PLAN AND SECTIONS	December 2019
M-9	GRIT AND CLASSIFIER ROOM AREA PLAN	December 2019
M-10	GRIT VORTEX / GRIT PUMPS - PLAN	December 2019
M-11	GRIT VORTEX / GRIT PUMPS - DRAINAGE PLAN	December 2019
M-12	GRIT CLASSIFIERS / DUMPSTERS - PLAN	December 2019
M-13	GRIT CLASSIFIERS / DUMPSTERS - DRAINAGE PLAN	December 2019
M-14	VORTEX AND GRIT PUMPS SECTIONS	December 2019
M-15	CLASSIFIER SECTIONS	December 2019
M-16	FINE SCREENS - SECTIONS	December 2019
M-17	SCREEN CHANNEL SECTION	December 2019
M-18	BY-PASS CHANNEL DRAIN - SECTIONS	December 2019
M-19	STAIR No. 1 PLAN AND SECTION	December 2019
M-20	STAIR No. 2 PLAN AND SECTION	December 2019
M-21	OVERALL ISOMETRIC VIEW	December 2019
M-22	GRIT PUMPS - ISOMETRIC VIEW	December 2019
M-23	CLASSIFIERS - ISOMETRIC VIEWS	December 2019
M-24	OVERALL DRAINAGE - ISOMETRICS	December 2019
M-25	OVERALL RCW - ISOMETRICS	December 2019
M-26	MISCELLANEOUS DETAILS	December 2019
M-27	NORTH EAST ISOMETRIC VIEW	December 2019
M-28	NORTH WEST ISOMETRIC VIEW	December 2019
M-29	EXISTING SEPTAGE RECEIVING FACILITY DEMO PLAN	December 2019
M-30	SEPTAGE RECEIVING FACILITY MECHANICAL PLAN	December 2019
M-31	SEPTAGE RECEIVING FACILITY MECHANICAL SECTIONS (1)	December 2019
M-32	SEPTAGE RECEIVING FACILITY MECHANICAL SECTIONS (2)	December 2019



# Attachment #1 - List of Drawings and Specifications

Contract # 178-0001-NC(SS)  
 South Cross Bayou AWRF Design Build  
 Headworks and Grit Removal Project

M-33	OVERALL ODOR CONTROL PLAN	December 2019
M-34	ODOR CONTROL FACILITY MECHANICAL PLAN	December 2019
M-35	ODOR CONTROL FACILITY SECTION (1)	December 2019
M-36	ODOR CONTROL FACILITY SECTION (2)	December 2019
M-37	ODOR CONTROL SYSTEM GENERAL ARRANGEMENT PLAN	December 2019
M-38	EXISTING HEADWORKS ODOR CONTROL DEMO PLAN AND SECTION	December 2019
M-39	EXISTING HEADWORKS ODOR CONTROL CHEMICAL ROOM DEMO PLAN	December 2019
M-40	EXISTING INFLUENT PUMP STATION ODOR CONTROL DEMO PLAN	December 2019
M-41	STANDARD DETAILS	December 2019
M-42	STANDARD DETAILS	December 2019
M-43	STANDARD DETAILS	December 2019
M-44	STANDARD DETAILS	December 2019
M-45	STANDARD DETAILS (1)	December 2019
M-46	STANDARD DETAILS (2)	December 2019
<b>Structural</b>		
S-0	GENERAL NOTES AND ABBREVIATIONS	December 2019
S-1	HEADWORKS FOUNDATION PLAN	December 2019
S-2	HEADWORKS SLAB PLAN	December 2019
S-3	HEADWORKS FRAMING PLAN	December 2019
S-4	HEADWORKS UPPER PLAN	December 2019
S-5	HEADWORKS SECTIONS	December 2019
S-6	HEADWORKS SECTIONS	December 2019
S-7	HEADWORKS SECTIONS	December 2019
S-8	HEADWORKS WALL DETAILS	December 2019
S-9	HEADWORKS WALL DETAILS	December 2019
S-10	HEADWORKS WALL DETAILS	December 2019
S-11	SEPTAGE RECEIVING PLAN VIEW	December 2019
S-12	SEPTAGE RECEIVING FACILITY SECTIONS	December 2019
S-13	ELECTRICAL BUILDING FOUNDATION AND SECTIONS	December 2019
S-14	STRUCTURAL DETAILS	December 2019
<b>HVAC</b>		
H-1	HVAC SYMBOLS	December 2019
H-2	HEADWORKS ELECTRICAL BUILDING HVAC PLAN	December 2019
H-3	HVAC DETAILS	December 2019
<b>Electrical</b>		
E-1	ELECTRICAL SYMBOLS, NOTES AND ABBREVIATIONS	December 2019
E-2	ELECTRICAL SITE PLAN	December 2019
E-3	EXISTING MCC-BLA AND MCC-BLB SINGLE LINE DIAGRAMS	December 2019
E-4	MCC-OCA AND MCC-OCB SINGLE LINE DIAGRAMS	December 2019
E-5	LOAD TABULATIONS	December 2019
E-6	FRONT ELEVATIONS	December 2019
E-7	ELEMENTARY CONTROL SCHEMATIC - SHEET 1	December 2019
E-8	ELEMENTARY CONTROL SCHEMATIC - SHEET 2	December 2019
E-9	ELEMENTARY CONTROL SCHEMATIC - SHEET 3	December 2019
E-10	ELEMENTARY CONTROL SCHEMATIC - SHEET 4	December 2019
E-11	ELEMENTARY CONTROL SCHEMATIC - SHEET 5	December 2019
E-12	ELEMENTARY CONTROL SCHEMATIC - SHEET 6	December 2019
E-13	ELEMENTARY CONTROL SCHEMATIC - SHEET 7	December 2019
E-14	CONTROLS INTERCONNECTION DIAGRAMS - SHEET 1	December 2019
E-15	CONTROLS INTERCONNECTION DIAGRAMS - SHEET 2	December 2019
E-16	PANELBOARD SCHEDULES - SHEET 1	December 2019
E-17	PANELBOARD SCHEDULES - SHEET 2	December 2019
E-18	NORTH GRIT BUILDING ELECTRICAL PLAN	December 2019
E-19	GENERATOR BUILDING NO. 4 POWER PLAN	December 2019
E-20	SOUTH GRIT BUILDING ELECTRICAL PLAN	December 2019
E-21	GENERATOR BUILDING NO. 2 POWER PLAN	December 2019
E-22	ELECTRICAL BUILDING POWER PLAN	December 2019
E-23	ELECTRICAL BUILDING LIGHTING PLAN	December 2019
E-24	ELECTRICAL BUILDING GROUNDING, LIGHTNING PROTECTION PLAN	December 2019
E-25	HEADWORKS HAZARDOUS AREA CLASSIFICATION PLAN	December 2019
E-26	HEADWORKS GRIT REMOVAL POWER PLAN	December 2019

## Attachment #1 - List of Drawings and Specifications

Contract # 178-0001-NC(SS)  
South Cross Bayou AWWRF Design Build  
Headworks and Grit Removal Project

E-27	HEADWORKS FINE SCREENING POWER PLAN	December 2019
E-28	HEADWORKS FLOW METERING POWER PLAN	December 2019
E-29	HEADWORKS GRIT PUMPING AND CLASSIFICATION POWER PLAN	December 2019
E-30	HEADWORKS GRIT PUMPING AND CLASSIFICATION LIGHTING PLAN	December 2019
E-31	ODOR CONTROL HAZARDOUS AREA CLASSIFICATION PLAN	December 2019
E-32	ODOR CONTROL SYSTEM POWER PLAN	December 2019
E-33	SEPTAGE RECEIVING HAZARDOUS AREA CLASSIFICATION	December 2019
E-34	SEPTAGE RECEIVING POWER PLAN	December 2019
E-35	PRELIMINARY POWER STUDY	December 2019
E-36	ELECTRICAL DETAILS SHEET 1	December 2019
E-37	ELECTRICAL DETAILS SHEET 2	December 2019
E-38	ELECTRICAL DETAILS SHEET 3	December 2019
<b>Instrumentation</b>		
I-1	P&ID NOTES, SYMBOLS & ABBREVIATIONS	December 2019
I-2	FIBER OPTIC NETWORK SITE PLAN	December 2019
I-3	P&ID TEMPORARY GRIT BYPASS	December 2019
I-4	P&ID HEADWORKS SCREENING	December 2019
I-5	P&ID HEADWORKS GRIT REMOVAL	December 2019
I-6	P&ID SEPTAGE RECEIVING STATION	December 2019
I-7	P&ID ODOR CONTROL	December 2019
I-8	P&ID SYSTEM BLOCK DIAGRAM	December 2019



# Attachment #1 - List of Drawings and Specifications

Contract # 178-0001-NC(SS)  
South Cross Bayou AWRP Design Build  
Headworks and Grit Removal Project



SOUTH CROSS BAYOU AWRP  
DESIGN BUILD HEADWORKS AND GRIT REMOVAL PROJECT  
CONSTRUCTION DOCUMENTS - 90% SPECIFICATIONS

Section No.	Description	Date
<b>DIV 00 - Procurement and Contracting Requirements</b>		
00 75 00	Special Provisions	December 2019
<b>DIV 01 - General Requirements</b>		
01 12 16	Construction Sequence	December 2019
01 35 00	Special Project Procedures	December 2019
01 41 13	Codes, Abbreviations and Symbols	December 2019
01 42 01	Reference Standards and Definitions	December 2019
01 45 17	Pipeline Pressure and Leakage Testing Requirements	December 2019
01 57 00	Control of Work	December 2019
01 57 13	Erosion and Sedimentation Control	December 2019
01 58 01	Project Identification Signs	December 2019
01 78 39	Project Record Documents	December 2019
<b>DIV 02 - Existing Conditions</b>		
02 20 20	Selective Demolition	December 2019
<b>DIV 03 - Concrete</b>		
03 10 01	Concrete Materials	December 2019
03 30 00	Cast-in-Place Concrete	December 2019
03 41 01	Precast Concrete Buildings	December 2019
03 81 00	Leakage Testing for Hydraulic Structures	December 2019
<b>DIV 05 - Metals</b>		
05 52 13	Aluminum Handrails and Guards	December 2019
05 60 00	Miscellaneous Metals	December 2019
05 70 00	Aluminum Covers	December 2019
<b>DIV 09 - Finishes</b>		
09 91 00	Painting and Protective Coatings	December 2019
09 96 00	High Performance Coatings	December 2019
<b>DIV 22 - Plumbing</b>		
22 13 19.13	Plumbing Specialties	December 2019
<b>DIV 23 - Heating, Ventilating, and Air Conditioning</b>		
23 00 00	Heating, Ventilation, and Air Conditioning	December 2019
<b>DIV 26 - Electrical</b>		
26 00 00	Electrical - General Provisions	December 2019
26 05 00	Miscellaneous Equipment	December 2019
26 05 13	Low Voltage Wire and Cable	December 2019
26 05 26	Grounding	December 2019
26 05 29	Supporting Devices	December 2019
26 05 33	Electrical Boxes, Fittings and Raceway	December 2019
26 05 43	Underground Electrical System	December 2019
26 05 53	Electrical Identification	December 2019
26 24 16	Panelboards	December 2019
26 24 19	Low Voltage Motor Control Centers	December 2019
26 27 26	Electrical Connections for Equipment	December 2019
26 29 23	Variable Frequency Drives	December 2019
26 41 00	Lightning Protection Systems	December 2019
26 50 00	Lighting Systems	December 2019
26 60 03	Motors	December 2019
26 60 43	Wiring Devices	December 2019
26 60 45	Fiber Optic Cabling	December 2019
<b>DIV 31 - Earthwork</b>		
31 23 33	Excavation and Backfill for Pipes	December 2019
31 23 34	Excavation and Backfill for Structures	December 2019
<b>DIV 32 - Exterior Improvements</b>		
32 12 01	Stabilized and Asphalt Roadway Restoration	December 2019
32 13 01	Concrete Sidewalks, Driveways, and Gutters	December 2019
32 92 01	Seeding and Sodding	December 2019
<b>DIV 33 - Utilities</b>		

## Attachment #1 - List of Drawings and Specifications

Contract # 178-0001-NC(SS)  
South Cross Bayou AWRP Design Build  
Headworks and Grit Removal Project

33 11 01	Potable Water Main Piping and Appurtenances	December 2019
33 13 01	Disinfection of Potable Water Mains	December 2019
33 33 01	Gravity Sewers	December 2019
33 34 00	Sanitary Sewage Force mains and Appurtenances	December 2019
33 35 01	Reclaimed Water Main Piping and Appurtenances	December 2019
<b>DIV 40 - Process Integration</b>		
40 05 13.10	Pipe Hangers and Supports	December 2019
40 05 19	Ductile Iron Pipe	December 2019
40 05 23	Stainless Steel Process Pipe and Tubing	December 2019
40 05 31	Plastic Pipe, Tubing, and Accessories	December 2019
40 05 53	Process Valves	December 2019
40 05 59	Hydraulic Gates	December 2019
40 62 00	Process Instrumentation and Equipment	December 2019
40 64 00	Control Strategy	December 2019
40 75 00	Automatic Composite Samplers	December 2019
40 92 00	General Provisions — Equipment	December 2019
40 94 43	PLC and SCADA Equipment	December 2019
40 95 13	Control Panels	December 2019
<b>DIV 43 - Process Equipment</b>		
43 20 00	Pumps, General	December 2019
<b>DIV 44 - Pollution Control Equipment</b>		
44 11 00	Odor Control Equipment	December 2019
44 11 10	Fiberglass-Reinforced Plastic (FRP) Ducts	December 2019
44 42 56.10	Submersible Non-Clog Pumps	December 2019
<b>DIV 46 - Wastewater Equipment</b>		
46 21 43	Band Screens	December 2019
46 23 23	Grit Removal Equipment	December 2019
46 71 73	Screenings Washing and Compacting Equipment	December 2019
<b>Appendices</b>		
Appendix A	Report of the Geotechnical Investigation - South Cross Bayou AWRP Headworks and Grit Facility	10/25/2019



Attachment #2 - Schedule of Values

**SCHEDULE OF VALUES**

Job: Design Build Services - New Headworks and Grit Removal Facility - Phase 1  
Contract No: 178-0001-NC (SS)

APPLICATION NUMBER:  
APPLICATION DATE:  
PERIOD TO:  
GARNEY PROJECT NO.: 0554

A ITEM NO.	B DESCRIPTION OF WORK	C QTY	UNIT OF MEASURE	UNIT PRICE	SCHEDULED VALUE	D WORK COMPLETED					F MATERIALS PRESENTLY STORED (NOT IN D OR E)	G TOTAL COMPLETED AND STORED TO DATE (D+E+F)	H % (G/C)	I BALANCE TO FINISH (C - G)	RETAINAGE N/A
						TOTAL QUANTITY COMPLETED	TOTAL QUANTITY COMPLETED PREVIOUS APP	TOTAL COMPLETED (D +E FROM PREVIOUS APP)	QUANTITY COMPLETED THIS PERIOD	COMPLETED THIS PERIOD					
<b>1 TASK 1 - GENERAL - PROGRAM MANAGEMENT</b>															
1a	Kickoff Meeting	1.00	LS	\$ 25,000.00	\$ 25,000.00	-	-	0.00	-	0.00	0.00	0.00	0.00%	25,000.00	0.00
1b	Monthly Program Management	14.00	MO	\$ 28,300.86	\$ 396,212.00	-	-	0.00	-	0.00	0.00	0.00	0.00%	396,212.00	0.00
					<b>\$421,212.00</b>			<b>\$0.00</b>		<b>\$0.00</b>	<b>\$0.00</b>	<b>\$0.00</b>	<b>0.00%</b>	<b>421,212.00</b>	
<b>2 TASK 2 - PROGRAM VERIFICATION</b>															
2a	Review and Evaluate DCP	1.00	LS	\$ 26,500.00	\$ 26,500.00	-	-	0.00	-	0.00	0.00	0.00	0.00%	26,500.00	0.00
2b	On Site Evaluations	1.00	LS	\$ 15,000.00	\$ 15,000.00	-	-	0.00	-	0.00	0.00	0.00	0.00%	15,000.00	0.00
2c	Prepare and Submit Initial DCP Evaluation Report	1.00	LS	\$ 19,750.00	\$ 19,750.00	-	-	0.00	-	0.00	0.00	0.00	0.00%	19,750.00	0.00
2d	Budget Feasibility Studies	1.00	LS	\$ 18,500.00	\$ 18,500.00	-	-	0.00	-	0.00	0.00	0.00	0.00%	18,500.00	0.00
2e	Initial Development - Final Program	1.00	LS	\$ 14,750.00	\$ 14,750.00	-	-	0.00	-	0.00	0.00	0.00	0.00%	14,750.00	0.00
2f	Complete Final Program	1.00	LS	\$ 28,471.00	\$ 28,471.00	-	-	0.00	-	0.00	0.00	0.00	0.00%	28,471.00	0.00
					<b>\$122,971.00</b>			<b>\$0.00</b>		<b>\$0.00</b>	<b>\$0.00</b>	<b>\$0.00</b>	<b>0.00%</b>	<b>\$122,971.00</b>	
<b>3 TASK 3 - SCHEMATIC DESIGN</b>															
3a	Prepare Initial Schematic Design Documents	1.00	LS	\$ 195,000.00	\$ 195,000.00	-	-	0.00	-	0.00	0.00	0.00	0.00%	195,000.00	0.00
3b	Initial Review/Approval Schematic Design Documents	1.00	LS	\$ 25,000.00	\$ 25,000.00	-	-	0.00	-	0.00	0.00	0.00	0.00%	25,000.00	0.00
3c	Update Project Schedule	1.00	LS	\$ 18,000.00	\$ 18,000.00	-	-	0.00	-	0.00	0.00	0.00	0.00%	18,000.00	0.00
3d	Prepare Final Schematic Design Documents	1.00	LS	\$ 147,767.00	\$ 147,767.00	-	-	0.00	-	0.00	0.00	0.00	0.00%	147,767.00	0.00
3e	Prepare Cost Estimate	1.00	LS	\$ 75,000.00	\$ 75,000.00	-	-	0.00	-	0.00	0.00	0.00	0.00%	75,000.00	0.00
3f	Final Review/Approval Schematic Design Documents	1.00	LS	\$ 35,000.00	\$ 35,000.00	-	-	0.00	-	0.00	0.00	0.00	0.00%	35,000.00	0.00
					<b>\$495,767.00</b>			<b>\$0.00</b>		<b>\$0.00</b>	<b>\$0.00</b>	<b>\$0.00</b>	<b>0.00%</b>	<b>\$495,767.00</b>	
<b>4 TASK 4 - DESIGN DEVELOPMENT</b>															
4a	Prepare Initial Design Development Documents	1.00	LS	\$ 290,000.00	\$ 290,000.00	-	-	0.00	-	0.00	0.00	0.00	0.00%	290,000.00	0.00
4b	Initial Review/Approval Design Development Documents	1.00	LS	\$ 25,000.00	\$ 25,000.00	-	-	0.00	-	0.00	0.00	0.00	0.00%	25,000.00	0.00
4c	Existing Piping, Utilities and Facilities Investigations	1.00	LS	\$ 80,000.00	\$ 80,000.00	-	-	0.00	-	0.00	0.00	0.00	0.00%	80,000.00	0.00
4d	Update Project Schedule	1.00	LS	\$ 18,500.00	\$ 18,500.00	-	-	0.00	-	0.00	0.00	0.00	0.00%	18,500.00	0.00
4e	Prepare Final Design Development Documents	1.00	LS	\$ 167,575.00	\$ 167,575.00	-	-	0.00	-	0.00	0.00	0.00	0.00%	167,575.00	0.00
4f	Prepare Cost Estimate	1.00	LS	\$ 75,000.00	\$ 75,000.00	-	-	0.00	-	0.00	0.00	0.00	0.00%	75,000.00	0.00
4g	Final Review/Approval Design Development Documents	1.00	LS	\$ 30,000.00	\$ 30,000.00	-	-	0.00	-	0.00	0.00	0.00	0.00%	30,000.00	0.00
					<b>\$686,075.00</b>			<b>\$0.00</b>		<b>\$0.00</b>	<b>\$0.00</b>	<b>\$0.00</b>	<b>0.00%</b>	<b>\$686,075.00</b>	
<b>5 TASK 5 - 70% CONSTRUCTION DOCUMENTS</b>															
5a	Prepare 70% Construction Documents - 90% Specifications	1.00	LS	\$ 275,000.00	\$ 275,000.00	-	-	0.00	-	0.00	0.00	0.00	0.00%	275,000.00	0.00
5b	Construction Documents Initial Review and Approval	1.00	LS	\$ 20,000.00	\$ 20,000.00	-	-	0.00	-	0.00	0.00	0.00	0.00%	20,000.00	0.00
5c	Finalize 70% Construction Documents - 90% Specifications	1.00	LS	\$ 63,779.00	\$ 63,779.00	-	-	0.00	-	0.00	0.00	0.00	0.00%	63,779.00	0.00
5d	Construction Documents Final Review and Approval	1.00	LS	\$ 20,000.00	\$ 20,000.00	-	-	0.00	-	0.00	0.00	0.00	0.00%	20,000.00	0.00
5e	Final Updated Project Schedule	1.00	LS	\$ 18,000.00	\$ 18,000.00	-	-	0.00	-	0.00	0.00	0.00	0.00%	18,000.00	0.00
5f	Final Construction Proposal (GMP)	1.00	LS	\$ 26,500.00	\$ 26,500.00	-	-	0.00	-	0.00	0.00	0.00	0.00%	26,500.00	0.00
					<b>\$423,279.00</b>			<b>\$0.00</b>		<b>\$0.00</b>	<b>\$0.00</b>	<b>\$0.00</b>	<b>0.00%</b>	<b>\$423,279.00</b>	
<b>6 TASK 6 - PUBLIC RELATIONS/PUBLIC OUTREACH</b>															
6a	Community Awareness	1.00	LS	\$ 4,248.00	\$ 4,248.00	-	-	0.00	-	0.00	0.00	0.00	0.00%	4,248.00	0.00
6b	Database	1.00	LS	\$ 7,009.20	\$ 7,009.20	-	-	0.00	-	0.00	0.00	0.00	0.00%	7,009.20	0.00
6c	Open House/Public Meeting	1.00	LS	\$ 12,849.60	\$ 12,849.60	-	-	0.00	-	0.00	0.00	0.00	0.00%	12,849.60	0.00
6d	Prep & Distribution	1.00	LS	\$ 4,269.60	\$ 4,269.60	-	-	0.00	-	0.00	0.00	0.00	0.00%	4,269.60	0.00
6e	Public Engagement/Outreach Management	1.00	LS	\$ 11,469.60	\$ 11,469.60	-	-	0.00	-	0.00	0.00	0.00	0.00%	11,469.60	0.00
6f	Website	1.00	LS	\$ 10,175.00	\$ 10,175.00	-	-	0.00	-	0.00	0.00	0.00	0.00%	10,175.00	0.00
					<b>\$50,021.00</b>			<b>0.00</b>		<b>0.00</b>	<b>0.00</b>	<b>0.00</b>	<b>0.00%</b>	<b>50,021.00</b>	
<b>7 TASK 7 - PHASE 1 DESIGN CONTINGENCY</b>															
7a	Owner Design Contingency	1.00	LS	\$ 250,000.00	\$ 250,000.00	-	-	0.00	-	0.00	0.00	0.00	0.00%	250,000.00	0.00
					<b>\$250,000.00</b>			<b>\$0.00</b>		<b>\$0.00</b>	<b>\$0.00</b>	<b>\$0.00</b>	<b>0.00%</b>	<b>\$250,000.00</b>	
<b>TOTALS</b>					<b>\$2,449,325.00</b>			<b>\$ -</b>		<b>\$ -</b>	<b>\$ -</b>	<b>\$ -</b>	<b>0.00%</b>	<b>\$ 2,449,325.00</b>	<b>N/A</b>



Attachment #2 - Schedule of Values

Contract # 178-0001-NC(SS)  
South Cross Bayou AWRP Design Build Headworks and Grit Removal Project

**SCHEDULE OF VALUES**

Page 1 of 2 Pages

Job: Design Build Services - New Headworks and Grit Removal Facility - Phase 2  
Contract No: 178-0001-NC (SS)

APPLICATION NUMBER:  
APPLICATION DATE:  
PERIOD TO:  
GARNEY PROJECT NO.: 0554

ITEM NO.	DESCRIPTION OF WORK	QTY	UNIT OF MEASURE	UNIT PRICE	SCHEDULED VALUE	WORK COMPLETED					MATERIALS PRESENTLY STORED (NOT IN D OR E)	TOTAL COMPLETED AND STORED TO DATE (D+E+F)	% (G/C)	BALANCE TO FINISH (C - G)	RETAINAGE N/A
						TOTAL QUANTITY COMPLETED	TOTAL QUANTITY COMPLETED PREVIOUS APP	TOTAL COMPLETED (D+E FROM PREVIOUS APP)	QUANTITY COMPLETED THIS PERIOD	COMPLETED THIS PERIOD					
<b>1000</b>	<b>PHASE 1A - MOBILIZATION</b>														
1010	MOBILIZATION	1.00	LS	\$ 100,000.00	\$ 100,000.00	-	-	0.00	-	0.00	0.00	0.00	0.00%	100,000.00	0.00
1020	GENERAL CONDITIONS/CONSTRUCTION MANAGEMENT	20.00	MO	\$ 81,600.00	\$ 1,632,000.00	-	-	0.00	-	0.00	0.00	0.00	0.00%	1,632,000.00	0.00
1030	TEMP CONSTRUCTION OFFICES SET UP INCLUDING OWNER OFFICES	1.00	LS	\$ 235,000.00	\$ 235,000.00	-	-	0.00	-	0.00	0.00	0.00	0.00%	235,000.00	0.00
1040	EROSION CONTROL	1.00	LS	\$ 30,000.00	\$ 30,000.00	-	-	0.00	-	0.00	0.00	0.00	0.00%	30,000.00	0.00
1050	DESIGN BUILDER PERFORMANCE & PAYMENT BONDS	1.00	LS	\$ 197,687.00	\$ 197,687.00	-	-	0.00	-	0.00	0.00	0.00	0.00%	197,687.00	0.00
1060	DESIGN BUILDER INSURANCE	1.00	LS	\$ 172,975.00	\$ 172,975.00	-	-	0.00	-	0.00	0.00	0.00	0.00%	172,975.00	0.00
1070	DESIGN BUILDER FEE	1.00	LS	\$ 1,176,706.00	\$ 1,176,706.00	-	-	0.00	-	0.00	0.00	0.00	0.00%	1,176,706.00	0.00
1080	DE-MOBILIZATION	1.00	LS	\$ 32,000.00	\$ 32,000.00	-	-	0.00	-	0.00	0.00	0.00	0.00%	32,000.00	0.00
1090	TRENCH SAFETY	1.00	LS	\$ 5,000.00	\$ 5,000.00	-	-	0.00	-	0.00	0.00	0.00	0.00%	5,000.00	0.00
<b>1100</b>	<b>PHASE 1B - DESIGN AND PERMITTING</b>														
1110	100% CONSTRUCTION DOCUMENTS	1.00	LS	\$ 70,000.00	\$ 70,000.00	-	-	0.00	-	0.00	0.00	0.00	0.00%	70,000.00	0.00
1120	BUILDING PERMIT	1.00	LS	\$ 50,000.00	\$ 50,000.00	-	-	0.00	-	0.00	0.00	0.00	0.00%	50,000.00	0.00
1130	FDEP PERMITTING	1.00	LS	\$ 50,000.00	\$ 50,000.00	-	-	0.00	-	0.00	0.00	0.00	0.00%	50,000.00	0.00
1140	CONSTRUCTION CONTRACT ADMINISTRATION	1.00	LS	\$ 685,000.00	\$ 685,000.00	-	-	0.00	-	0.00	0.00	0.00	0.00%	685,000.00	0.00
1150	DESIGN SERVICES DURING CONSTRUCTION	1.00	LS	\$ 245,000.00	\$ 245,000.00	-	-	0.00	-	0.00	0.00	0.00	0.00%	245,000.00	0.00
<b>1200</b>	<b>PHASE 1C - EXISTING GRIT STRUCTURE BYPASS</b>														
1210	INSTALL TEMPORARY HEADWORKS EFFLUENT BYPASS SYSTEM	1.00	LS	\$ 360,000.00	\$ 360,000.00	-	-	0.00	-	0.00	0.00	0.00	0.00%	360,000.00	0.00
1220	INSTALL TEMPORARY 60", 54", AND "48" PIPING AND VALVES FROM EX HEADW	1.00	LS	\$ 800,000.00	\$ 800,000.00	-	-	0.00	-	0.00	0.00	0.00	0.00%	800,000.00	0.00
1230	MODIFICATIONS TO EXISTING N & S EXISTING GRIT REMOVAL STRUCTURES	1.00	LS	\$ 500,000.00	\$ 500,000.00	-	-	0.00	-	0.00	0.00	0.00	0.00%	500,000.00	0.00
1240	REMOVE BYPASS PIPING AND DECOMMISSION EXISTING N & S GRIT REMOVAL S	1.00	LS	\$ 30,000.00	\$ 30,000.00	-	-	0.00	-	0.00	0.00	0.00	0.00%	30,000.00	0.00
<b>2000</b>	<b>PHASE 2 - EXISTING GRIT STRUCTURE AND ODOR CONTROL DEMOLITION</b>														
2010	GRIT FACILITY STRUCTURAL DEMOLITION	1.00	LS	\$ 150,000.00	\$ 150,000.00	-	-	0.00	-	0.00	0.00	0.00	0.00%	150,000.00	0.00
2020	GRIT FACILITY BURIED PIPING DEMOLITION	1.00	LS	\$ 115,000.00	\$ 115,000.00	-	-	0.00	-	0.00	0.00	0.00	0.00%	115,000.00	0.00
2030	SEPTATGE RECEIVING STATION DEMOLITION	1.00	LS	\$ 105,000.00	\$ 105,000.00	-	-	0.00	-	0.00	0.00	0.00	0.00%	105,000.00	0.00
2040	SODIUM HYPOCHLORITE TANKS, EQUIPMENT, AND SLAB DEMOLITION	1.00	LS	\$ 40,000.00	\$ 40,000.00	-	-	0.00	-	0.00	0.00	0.00	0.00%	40,000.00	0.00
2050	MODIFICATIONS TO EXISTING ODOR CONTROL SYSTEM	1.00	LS	\$ 40,000.00	\$ 40,000.00	-	-	0.00	-	0.00	0.00	0.00	0.00%	40,000.00	0.00
2060	EXCAVATION DEWATERING	1.00	LS	\$ 285,000.00	\$ 285,000.00	-	-	0.00	-	0.00	0.00	0.00	0.00%	285,000.00	0.00
2070	30" RAS IPS PIPE RELOCATION	1.00	LS	\$ 180,000.00	\$ 180,000.00	-	-	0.00	-	0.00	0.00	0.00	0.00%	180,000.00	0.00
<b>3000</b>	<b>PHASE 3 - UNDER SLAB PROCESS PIPING AND ELECTRICAL CONDUITS</b>														
3010	42" RS EFFLUENT PIPE	1.00	LS	\$ 200,000.00	\$ 200,000.00	-	-	0.00	-	0.00	0.00	0.00	0.00%	200,000.00	0.00
3020	54" RS EFFLUENT PIPE	1.00	LS	\$ 210,000.00	\$ 210,000.00	-	-	0.00	-	0.00	0.00	0.00	0.00%	210,000.00	0.00
3030	UNDERSLAB DRAIN PIPING SYSTEMS	1.00	LS	\$ 275,000.00	\$ 275,000.00	-	-	0.00	-	0.00	0.00	0.00	0.00%	275,000.00	0.00
3040	UNDERSLAB ELECTRICAL CONDUIT	1.00	LS	\$ 100,000.00	\$ 100,000.00	-	-	0.00	-	0.00	0.00	0.00	0.00%	100,000.00	0.00
<b>4000</b>	<b>PHASE 4 - NEW SCREENING AND GRIT REMOVAL STRUCTURE</b>														
4100	<b>SITE CIVIL</b>														
4110	STRUCTURAL EXCAVATION	1.00	LS	\$ 55,000.00	\$ 55,000.00	-	-	0.00	-	0.00	0.00	0.00	0.00%	55,000.00	0.00
4120	STRUCTURAL BACKFILL	1.00	LS	\$ 30,000.00	\$ 30,000.00	-	-	0.00	-	0.00	0.00	0.00	0.00%	30,000.00	0.00
4130	STORM DRAIN SYSTEM	1.00	LS	\$ 40,000.00	\$ 40,000.00	-	-	0.00	-	0.00	0.00	0.00	0.00%	40,000.00	0.00
4140	SITE GRADING	1.00	LS	\$ 20,000.00	\$ 20,000.00	-	-	0.00	-	0.00	0.00	0.00	0.00%	20,000.00	0.00
4150	SIDEWALKS	1.00	LS	\$ 25,000.00	\$ 25,000.00	-	-	0.00	-	0.00	0.00	0.00	0.00%	25,000.00	0.00
4160	PAVING	1.00	LS	\$ 165,000.00	\$ 165,000.00	-	-	0.00	-	0.00	0.00	0.00	0.00%	165,000.00	0.00
4170	SITE RESTORATION	1.00	LS	\$ 40,000.00	\$ 40,000.00	-	-	0.00	-	0.00	0.00	0.00	0.00%	40,000.00	0.00
4200	<b>STRUCTURAL &amp; MECHANICAL</b>														
4205	BASE SLABS FORM, REINFORCE, PLACE CONCRETE	1.00	LS	\$ 585,000.00	\$ 585,000.00	-	-	0.00	-	0.00	0.00	0.00	0.00%	585,000.00	0.00
4210	WALLS EXTERIOR FORM, REINFORCE, PLACE CONCRETE	1.00	LS	\$ 1,630,000.00	\$ 1,630,000.00	-	-	0.00	-	0.00	0.00	0.00	0.00%	1,630,000.00	0.00
4215	SUSPENDED DECKS FORM, REINFORCE, PLACE CONCRETE	1.00	LS	\$ 685,000.00	\$ 685,000.00	-	-	0.00	-	0.00	0.00	0.00	0.00%	685,000.00	0.00
4220	CHANNEL WALLS FORM, REINFORCE, PLACE CONCRETE	1.00	LS	\$ 430,000.00	\$ 430,000.00	-	-	0.00	-	0.00	0.00	0.00	0.00%	430,000.00	0.00
4225	COLUMNS FORM, REINFORCE, PLACE CONCRETE	1.00	LS	\$ 55,000.00	\$ 55,000.00	-	-	0.00	-	0.00	0.00	0.00	0.00%	55,000.00	0.00
4230	COVERS	1.00	LS	\$ 275,000.00	\$ 275,000.00	-	-	0.00	-	0.00	0.00	0.00	0.00%	275,000.00	0.00
4235	SCREENS AND COMPACTORS	1.00	LS	\$ 1,100,000.00	\$ 1,100,000.00	-	-	0.00	-	0.00	0.00	0.00	0.00%	1,100,000.00	0.00
4240	GRIT EQUIPMENT	1.00	LS	\$ 1,765,000.00	\$ 1,765,000.00	-	-	0.00	-	0.00	0.00	0.00	0.00%	1,765,000.00	0.00
4245	PROCESS PIPING AND VALVES	1.00	LS	\$ 715,000.00	\$ 715,000.00	-	-	0.00	-	0.00	0.00	0.00	0.00%	715,000.00	0.00
4250	MISC SMALL PIPING SYSTEMS	1.00	LS	\$ 145,000.00	\$ 145,000.00	-	-	0.00	-	0.00	0.00	0.00	0.00%	145,000.00	0.00
4255	MISC METALS	1.00	LS	\$ 175,000.00	\$ 175,000.00	-	-	0.00	-	0.00	0.00	0.00	0.00%	175,000.00	0.00
4300	<b>PAINTINGS AND COATINGS</b>														
4310	CHANNEL COATINGS	1.00	LS	\$ 180,000.00	\$ 180,000.00	-	-	0.00	-	0.00	0.00	0.00	0.00%	180,000.00	0.00
4320	PIPELINE PAINTING	1.00	LS	\$ 150,000.00	\$ 150,000.00	-	-	0.00	-	0.00	0.00	0.00	0.00%	150,000.00	0.00
4330	EXTERIOR PAINTING	1.00	LS	\$ 100,000.00	\$ 100,000.00	-	-	0.00	-	0.00	0.00	0.00	0.00%	100,000.00	0.00
4400	<b>ELECTRICAL &amp; INSTRUMENTATION</b>														
4410	INSTRUMENTATION FIELD ITEMS	1.00	LS	\$ 144,387.00	\$ 144,387.00	-	-	0.00	-	0.00	0.00	0.00	0.00%	144,387.00	0.00
4420	ELECTRICAL CONDUIT ROUGH-IN	1.00	LS	\$ 135,000.00	\$ 135,000.00	-	-	0.00	-	0.00	0.00	0.00	0.00%	135,000.00	0.00
4430	ELECTRICAL EQUIPMENT & CONNECTIONS	1.00	LS	\$ 50,000.00	\$ 50,000.00	-	-	0.00	-	0.00	0.00	0.00	0.00%	50,000.00	0.00
4440	START-UP, TESTING, AND TRAINING	1.00	LS	\$ 10,000.00	\$ 10,000.00	-	-	0.00	-	0.00	0.00	0.00	0.00%	10,000.00	0.00
4500	<b>MAIN ELECTRICAL BUILDING</b>														
4505	ELECTRICAL CONDUIT ROUGH-IN - UNDER SLAB	1.00	LS	\$ 50,000.00	\$ 50,000.00	-	-	0.00	-	0.00	0.00	0.00	0.00%	50,000.00	0.00



Attachment #2 - Schedule of Values

Contract # 178-0001-NC(SS)  
South Cross Bayou AWRP Design Build Headworks and Grit Removal Project

4510	CONCRETE SLABS BASE SLAB	1.00	LS	\$ 14,000.00	\$ 14,000.00	-	-	0.00	-	0.00	0.00	0.00	0.00	14,000.00	0.00
4515	PRECAST BUILDING	1.00	LS	\$ 110,000.00	\$ 110,000.00	-	-	0.00	-	0.00	0.00	0.00	0.00	110,000.00	0.00
4520	PAINTING AND FINISHES	1.00	LS	\$ 50,000.00	\$ 50,000.00	-	-	0.00	-	0.00	0.00	0.00	0.00	50,000.00	0.00
4525	EQUIPMENT PADS	1.00	LS	\$ 7,000.00	\$ 7,000.00	-	-	0.00	-	0.00	0.00	0.00	0.00	7,000.00	0.00
4530	HVAC	1.00	LS	\$ 45,000.00	\$ 45,000.00	-	-	0.00	-	0.00	0.00	0.00	0.00	45,000.00	0.00
4535	ELECTRICAL GEAR	1.00	LS	\$ 175,000.00	\$ 175,000.00	-	-	0.00	-	0.00	0.00	0.00	0.00	175,000.00	0.00
4540	MCCS	1.00	LS	\$ 200,000.00	\$ 200,000.00	-	-	0.00	-	0.00	0.00	0.00	0.00	200,000.00	0.00
4545	VFDS	1.00	LS	\$ 150,000.00	\$ 150,000.00	-	-	0.00	-	0.00	0.00	0.00	0.00	150,000.00	0.00
4550	ELECTRICAL WIRE	1.00	LS	\$ 100,000.00	\$ 100,000.00	-	-	0.00	-	0.00	0.00	0.00	0.00	100,000.00	0.00
4600	<b>MODIFICATIONS TO SEPTAGE RECEIVING</b>														
4610	ELECTRIC PUMPS	1.00	LS	\$ 70,000.00	\$ 70,000.00	-	-	0.00	-	0.00	0.00	0.00	0.00	70,000.00	0.00
4620	MECHANICAL PIPING AND VALVE	1.00	LS	\$ 60,000.00	\$ 60,000.00	-	-	0.00	-	0.00	0.00	0.00	0.00	60,000.00	0.00
4630	VAC TRUCK RECEIVING STRUCTURE	1.00	LS	\$ 50,000.00	\$ 50,000.00	-	-	0.00	-	0.00	0.00	0.00	0.00	50,000.00	0.00
4640	INTERIOR COATINGS	1.00	LS	\$ 150,000.00	\$ 150,000.00	-	-	0.00	-	0.00	0.00	0.00	0.00	150,000.00	0.00
4650	MISC METALS	1.00	LS	\$ 30,000.00	\$ 30,000.00	-	-	0.00	-	0.00	0.00	0.00	0.00	30,000.00	0.00
4700	<b>SITE ELECTRICAL</b>														
4710	POWER DUCTBANK - EXISTING ELECTRIC BD. TO NEW ELECTRIC BD.	1.00	LS	\$ 100,000.00	\$ 100,000.00	-	-	0.00	-	0.00	0.00	0.00	0.00	100,000.00	0.00
4720	UNDERGROUND CONDUIT AND FITTINGS	1.00	LS	\$ 50,000.00	\$ 50,000.00	-	-	0.00	-	0.00	0.00	0.00	0.00	50,000.00	0.00
4730	WIRE AND CABLE	1.00	LS	\$ 100,000.00	\$ 100,000.00	-	-	0.00	-	0.00	0.00	0.00	0.00	100,000.00	0.00
4740	LIGHTNING PROTECTION	1.00	LS	\$ 50,000.00	\$ 50,000.00	-	-	0.00	-	0.00	0.00	0.00	0.00	50,000.00	0.00
4750	SIGHT LIGHTING AND CCTV	1.00	LS	\$ 75,000.00	\$ 75,000.00	-	-	0.00	-	0.00	0.00	0.00	0.00	75,000.00	0.00
4760	ELECTRICAL TESTING & TRAINING	1.00	LS	\$ 25,000.00	\$ 25,000.00	-	-	0.00	-	0.00	0.00	0.00	0.00	25,000.00	0.00
4800	<b>PROCESS CONTROL, INSTRUMENTATION AND SCADA</b>														
4810	PLC PANELS	1.00	LS	\$ 110,000.00	\$ 110,000.00	-	-	0.00	-	0.00	0.00	0.00	0.00	110,000.00	0.00
4820	HARDWARE	1.00	LS	\$ 20,000.00	\$ 20,000.00	-	-	0.00	-	0.00	0.00	0.00	0.00	20,000.00	0.00
4830	SCADA NETWORK	1.00	LS	\$ 50,000.00	\$ 50,000.00	-	-	0.00	-	0.00	0.00	0.00	0.00	50,000.00	0.00
4840	PROGRAMMING	1.00	LS	\$ 20,000.00	\$ 20,000.00	-	-	0.00	-	0.00	0.00	0.00	0.00	20,000.00	0.00
4850	START-UP, TESTING, AND TRAINING	1.00	LS	\$ 20,000.00	\$ 20,000.00	-	-	0.00	-	0.00	0.00	0.00	0.00	20,000.00	0.00
5000	<b>PHASE 5 - YARD PROCESS PIPING</b>														
5010	42" RS INFLUENT PIPE	1.00	LS	\$ 170,000.00	\$ 170,000.00	-	-	0.00	-	0.00	0.00	0.00	0.00	170,000.00	0.00
5020	36" RS INFLUENT PIPE	1.00	LS	\$ 25,000.00	\$ 25,000.00	-	-	0.00	-	0.00	0.00	0.00	0.00	25,000.00	0.00
5030	14" PLANT DRAIN PS PIPE	1.00	LS	\$ 25,000.00	\$ 25,000.00	-	-	0.00	-	0.00	0.00	0.00	0.00	25,000.00	0.00
5040	6" SEPTAGE FM PIPE	1.00	LS	\$ 20,000.00	\$ 20,000.00	-	-	0.00	-	0.00	0.00	0.00	0.00	20,000.00	0.00
5050	4" RCW PIPE	1.00	LS	\$ 15,000.00	\$ 15,000.00	-	-	0.00	-	0.00	0.00	0.00	0.00	15,000.00	0.00
5060	PIPE PRESSURE TESTING	1.00	LS	\$ 10,000.00	\$ 10,000.00	-	-	0.00	-	0.00	0.00	0.00	0.00	10,000.00	0.00
6000	<b>PHASE 6 &amp; 7 - FINAL TIE INS AND STARTUP AND TESTING OF NEW FACILITY AND EQUIPMENT</b>														
6010	CLEAN WATER TESTING OF SCREENING AND GRIT REMOVAL EQUIPMENT	1.00	LS	\$ 10,000.00	\$ 10,000.00	-	-	0.00	-	0.00	0.00	0.00	0.00	10,000.00	0.00
6020	RELOCATE EXISTING SCREENS	1.00	LS	\$ 500,000.00	\$ 500,000.00	-	-	0.00	-	0.00	0.00	0.00	0.00	500,000.00	0.00
6030	42" IPS FINAL CONNECTION	1.00	LS	\$ 75,000.00	\$ 75,000.00	-	-	0.00	-	0.00	0.00	0.00	0.00	75,000.00	0.00
6040	42" SOUTH FM FINAL CONNECTION	1.00	LS	\$ 75,000.00	\$ 75,000.00	-	-	0.00	-	0.00	0.00	0.00	0.00	75,000.00	0.00
8000	<b>PHASE 8 - HEADWORKS DEMOLITION AND NEW ODOR CONTROL</b>														
8100	<b>HEADWORKS DEMOLITION</b>														
8110	HEADWORKS STRUCTURAL DEMOLITION	1.00	LS	\$ 100,000.00	\$ 100,000.00	-	-	0.00	-	0.00	0.00	0.00	0.00	100,000.00	0.00
8120	HEADWORKS BURIED PIPING DEMOLITION	1.00	LS	\$ 15,000.00	\$ 15,000.00	-	-	0.00	-	0.00	0.00	0.00	0.00	15,000.00	0.00
8130	STRUCTURAL BACKFILL	1.00	LS	\$ 10,000.00	\$ 10,000.00	-	-	0.00	-	0.00	0.00	0.00	0.00	10,000.00	0.00
8200	<b>ODOR CONTROL</b>														
8210	STRUCTURAL EXCAVATION/GRADING	1.00	LS	\$ 20,000.00	\$ 20,000.00	-	-	0.00	-	0.00	0.00	0.00	0.00	20,000.00	0.00
8220	BASE SLABS FORM, REINFORCE, PLACE CONCRETE	1.00	LS	\$ 30,000.00	\$ 30,000.00	-	-	0.00	-	0.00	0.00	0.00	0.00	30,000.00	0.00
8230	ODOR CONTROL EQUIPMENT	1.00	LS	\$ 765,000.00	\$ 765,000.00	-	-	0.00	-	0.00	0.00	0.00	0.00	765,000.00	0.00
8240	PROCESS PIPING SYSTEMS	1.00	LS	\$ 374,073.00	\$ 374,073.00	-	-	0.00	-	0.00	0.00	0.00	0.00	374,073.00	0.00
8250	ELECTRICAL CONDUIT ROUGH-IN	1.00	LS	\$ 20,000.00	\$ 20,000.00	-	-	0.00	-	0.00	0.00	0.00	0.00	20,000.00	0.00
8260	ELECTRICAL EQUIPMENT & CONNECTIONS	1.00	LS	\$ 10,000.00	\$ 10,000.00	-	-	0.00	-	0.00	0.00	0.00	0.00	10,000.00	0.00
8270	START-UP, TESTING, AND TRAINING	1.00	LS	\$ 10,000.00	\$ 10,000.00	-	-	0.00	-	0.00	0.00	0.00	0.00	10,000.00	0.00
	<b>CONTINGENCIES / ALLOWANCES</b>														
A1	GRIT REMOVAL ALLOWANCE	1.00	LS	\$ 975,000.00	\$ 975,000.00	-	-	0.00	-	0.00	0.00	0.00	0.00	975,000.00	0.00
A2	UNFORSEEN CONDITIONS ALLOWANCE	1.00	LS	\$ 500,000.00	\$ 500,000.00	-	-	0.00	-	0.00	0.00	0.00	0.00	500,000.00	0.00
A3	PERMIT ALLOWANCE	1.00	LS	\$ 25,000.00	\$ 25,000.00	-	-	0.00	-	0.00	0.00	0.00	0.00	25,000.00	0.00
A4	MATERIAL TESTING	1.00	LS	\$ 50,000.00	\$ 50,000.00	-	-	0.00	-	0.00	0.00	0.00	0.00	50,000.00	0.00
A5	LANDSCAPING	1.00	LS	\$ 25,000.00	\$ 25,000.00	-	-	0.00	-	0.00	0.00	0.00	0.00	25,000.00	0.00
A6	OWNER CONTINGENCY	1.00	LS	\$ 1,200,000.00	\$ 1,200,000.00	-	-	0.00	-	0.00	0.00	0.00	0.00	1,200,000.00	0.00
A7	DESIGN BUILDER CONTINGENCY	1.00	LS	\$ 1,000,000.00	\$ 1,000,000.00	-	-	0.00	-	0.00	0.00	0.00	0.00	1,000,000.00	0.00
	<b>TOTALS</b>				\$24,710,828.00			\$ -		\$ -		\$ -	0.00%	\$ 24,710,828.00	N/A

## Attachment #3 – Clarifications & Exclusions

Contract # 178-0001-NC(SS)  
South Cross Bayou AWWRF Design Build  
Headworks and Grit Removal Project



SOUTH CROSS BAYOU AWWRF  
DESIGN BUILD HEADWORKS AND GRIT REMOVAL PROJECT



### Clarifications & Exclusions

#### Section 01 – General Clarifications

- 1-01 The pricing for the Lump Sum Proposal is based on 70-percent Drawings and 90-percent Specifications dated December 2019. Additional scope and work added to the design following this design phase or required from Permit Review or other Authorities having Jurisdiction (AHJ) shall be funded by the Owner Contingency.
- 1-02 The Lump Sum Proposal does not include upgrades or modifications to the existing facility to handle Grit beyond the scope provided within the design documents.
- 1-03 The Lump Sum Proposal does not include the County requested Lift Station No. 1 modifications. The design and construction of this work will be paid from the Owner Contingency.
- 1-04 Phase 1 services are not included in the Lump Sum Proposal.
- 1-05 Asbestos survey, abatement, and associated monitoring are not included in the Lump Sum Proposal and is the responsibility of the Owner.
- 1-06 Removal of hazardous materials encountered during work and not identified by the Contract Documents shall be reimbursed through the Owner Contingency. In the event suspected Asbestos Containing Materials (ACM's) or other hazardous materials are encountered, work in that area(s) will be halted until the Owner's testing agency samples and confirms the presence/absence of ACM's/hazardous materials. If ACM's/hazardous materials are present, it shall be the Owner's responsibility to remove any ACM's and/or hazardous materials and retest.
- 1-07 Power for construction and field offices shall be fed from the Owner's existing service, with consumption costs paid by Owner.
- 1-08 Water for construction and field offices shall be fed from the Owner's existing service, with consumption costs paid by Owner.
- 1-09 Application, review, and impact fees for permitting will be paid through the "Permit Allowance" which is included in the lump sum proposal.



## **Attachment #3 – Clarifications & Exclusions**

Contract # 178-0001-NC(SS)  
South Cross Bayou AWRP Design Build  
Headworks and Grit Removal Project

- 1-10 A “Owner Contingency” has been included in the Lump Sum Proposal to cover the cost for any additional scope added to the project at the request of the Owner after the 70-percent Drawings/90-percent Specification submittal and throughout construction. All unused “Owner Contingency” will be returned to Owner.
- 1-11 A “Design Builder Contingency” has been included in the Lump Sum Proposal to be used at the discretion of the Design Build Team and only with the written approval of the Owner. All unused “Design Builder Contingency” will be returned to Owner.
- 1-12 The Design Build Team will submit written requests for Owner’s acceptance to use Project’s contingencies or allowances. Garney will not perform any work that will be charged to the Project’s contingencies or allowances prior to the Owners written acceptance.
- 1-13 All unused contingencies and allowances that are remaining at the completion of the project will be returned to the Owner.
- 1-14 The Lump Sum Proposal is based on a 20-month construction schedule. Garney’s direct costs resulting from extending the construction schedule past 20 months will be paid from the Design Builder Contingency up to 24-months.
- 1-15 The Lump Sum Proposal assumes there are no Davis-Bacon or other prevailing wage requirements or American Iron and Steel (AIS) provisions.

### **Section 02 – Work Scope Clarifications and Assumptions**

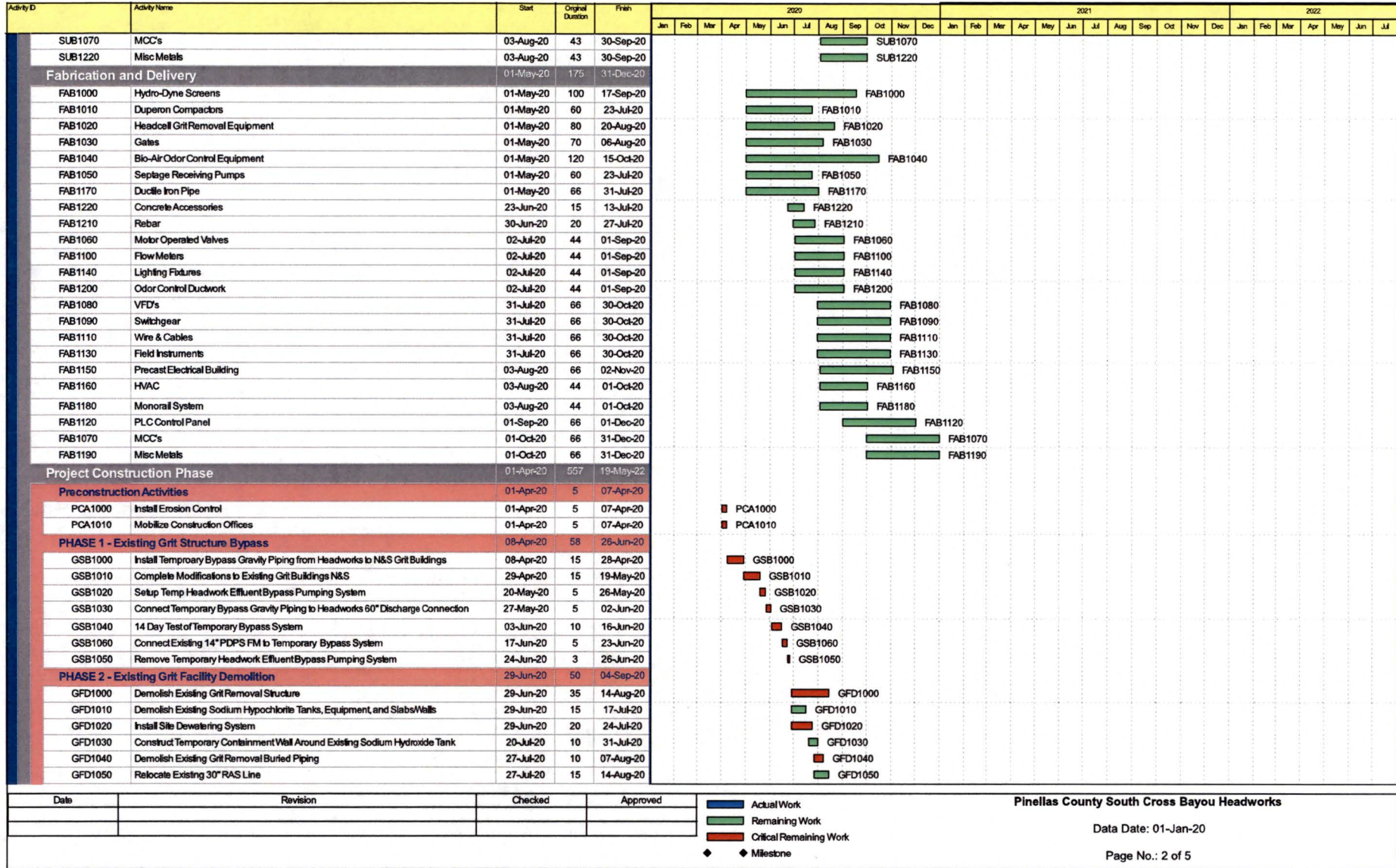
- 2-01 The existing Septage Receiving Station is assumed to be out of service during construction.
- 2-02 Existing utilities identified during Construction which require remediation are not included and shall be completed under the Owner’s Contingency provided reasonably prudent professional care was provided during inspection.





# Attachment #4 - Completion Schedule

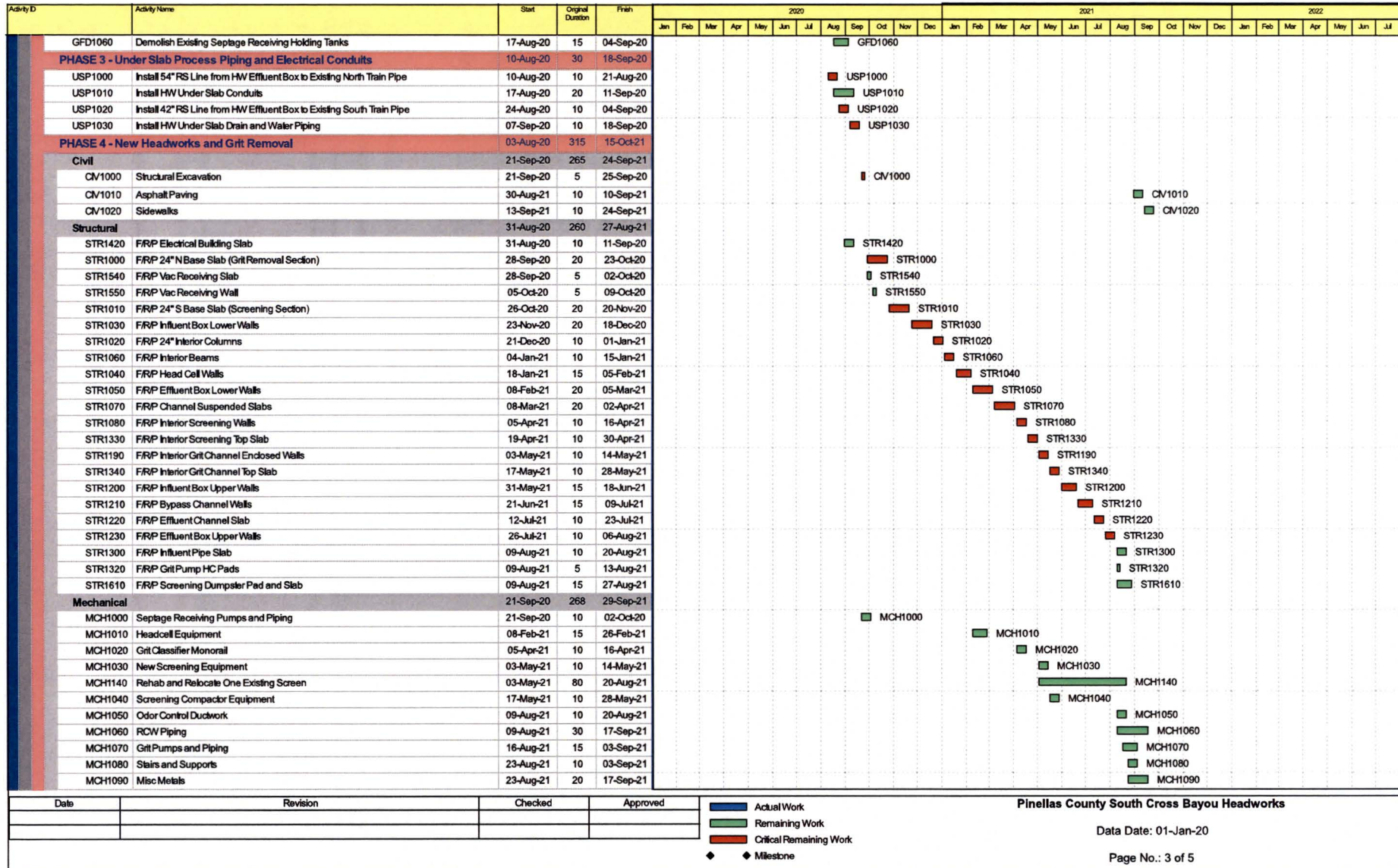
Contract # 178-0001-NC(SS)  
 South Cross Bayou AWRP Design Build  
 Headworks and Grit Removal Project





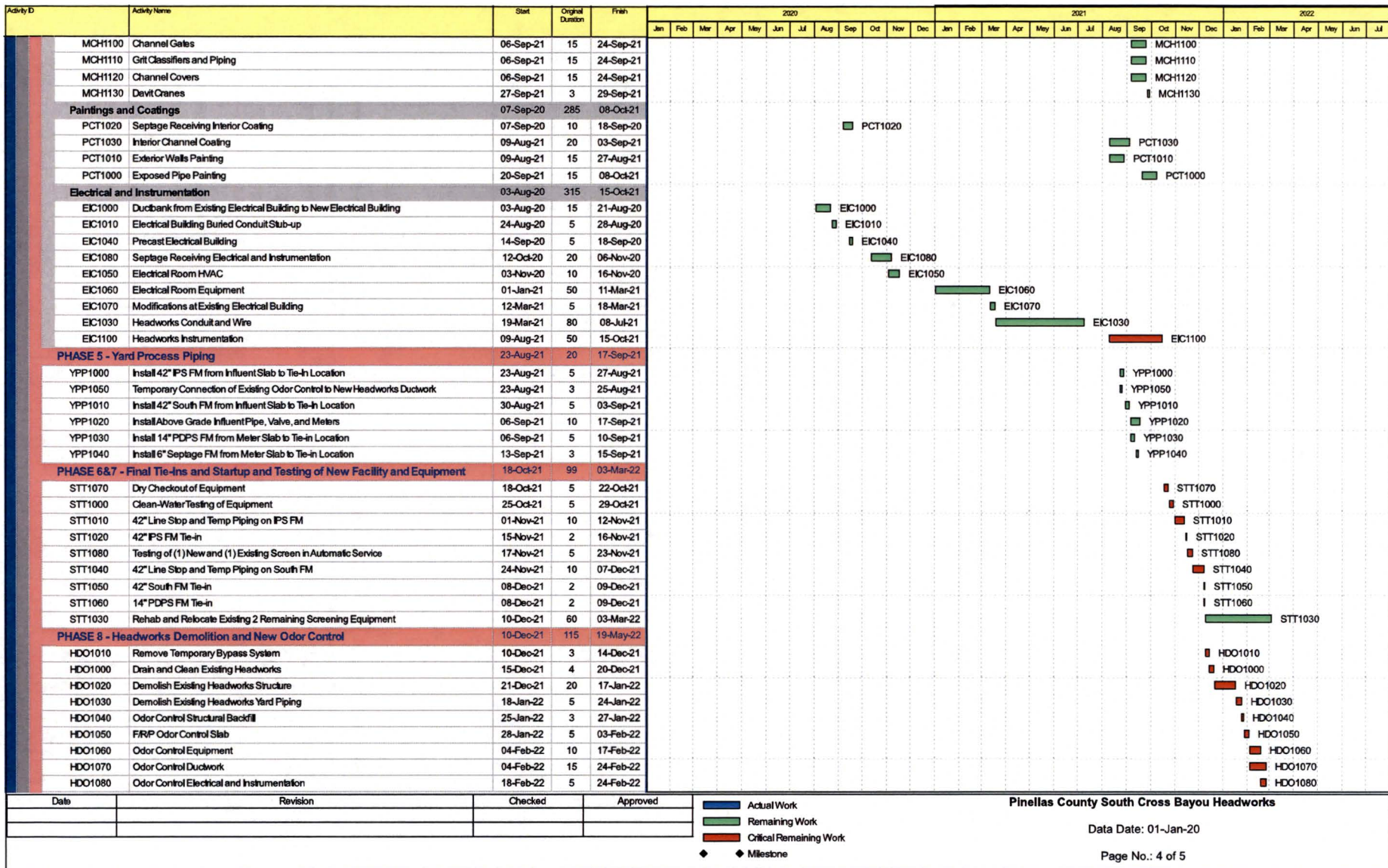
# Attachment #4 - Completion Schedule

Contract # 178-0001-NC(SS)  
 South Cross Bayou AWRP Design Build  
 Headworks and Grit Removal Project



### Attachment #4 - Completion Schedule

Contract # 178-0001-NC(SS)  
 South Cross Bayou AWRP Design Build  
 Headworks and Grit Removal Project







## Attachment #5 - List of Subcontractors and Major Suppliers

Contract # 178-0001-NC(SS)  
South Cross Bayou AWRF Design Build  
Headworks and Grit Removal Project



SOUTH CROSS BAYOU AWRF  
DESIGN BUILD HEADWORKS AND GRIT REMOVAL PROJECT  
LIST OF SUBCONTRACTORS AND MAJOR SUPPLIERS

Description	Subcontractor/Vendor
<b>DIV 02 - Existing Conditions</b>	
Demolition	PAW Demolition
<b>DIV 03 - Concrete</b>	
Ready Mix Concrete	Cemex
Ready Mix Concrete	Argos
Rebar Materials	Trinity Construction
Rebar Materials	CMC Comercial Metals
Rebar Instalation	Eagle Steel
Precast Building	Concrete Modular Systems
<b>DIV 05 - Metals</b>	
Miscellaneous Metals	T3 Fabricators
Miscellaneous Metals	Metalcraft Services
Aluminum Covers	Hallsten Corporation
<b>DIV 09 - Finishes</b>	
Painting and Coatings	GML Coatings
Painting and Coatings	Cypress Construction and Coatings
<b>DIV 23 - Heating, Ventilating, and Air Conditioning</b>	
HVAC	French's Air Conditioning
<b>DIV 26 - Electrical</b>	
Electrical	Cogburn Bros inc.
<b>DIV 32 - Exterior Improvements</b>	
Asphalt Paving	Blackrock Asphalt
Asphalt Paving	Capital Paving
Asphalt Paving	Ajax Paving
<b>DIV 33 - Utilitites</b>	
Pipe and Valve Supply	Fortline Waterworks
Pipe and Valve Supply	Ferguson Waterworks
Pipe and Valve Supply	Core and Main
Pipe and Valve Supply	McDade Waterworks
Precast Structures	Forterra
Precast Structures	Mack Industries
<b>DIV 40 - Process Integration</b>	
Hydraulic Gates	Waco Environmental Products
Hydraulic Gates	Fontaine-Aquanox
Hydraulic Gates	RW Gate Company
Hydraulic Gates	Waterman Vlavl
Hydraulic Gates	Whipps inc.
Pipe Hangers and Supports	Gulf State Hangers and Support
Pipe Hangers and Supports	Carpenter and Patterson
Instrumentation	Rocha Controls
<b>DIV 44 - Polution Control Equipment</b>	
Odor Control Equipment	BioAir
FRP Ducts	Midwestern Fabricators
FRP Ducts	Industrial Plastic Systems
FRP Ducts	Environmental Composite Systems
Submersible Non-Clog Pumps	Xylem
<b>DIV 46 - Wastewater Equipment</b>	
Band Screens	Hydro-Dyne
Grit Removal Equipment	Hydro International
Screenings Washing and Compacting Equipment	Duperon





SOUTH CROSS BAYOU AWRF  
DESIGN BUILD HEADWORKS AND GRIT REMOVAL PROEJCT



## Allowances

### Project Information

- Project Name: New Grit Removal Facility Design/Build Project
- Description: Lump Sum Agreement Price
- Location: Pinellas County South Cross Bayou Advanced WRF (St. Petersburg, FL)
- Date: December 20, 2019

### Allowance Detail

1. **Grit Removal Allowance: \$975,000**  
The allowance is intended as an approximate value for grit removal at existing tanks and during the temporary bypass phase of work. Costs included in this allowance include, but not limited to, preliminary investigations, draining and cleaning of tanks, removal and legal disposal of all accumulated grit and solids, landfill permitting and disposal costs, grit materials testing and any other costs associated with grit and solids removal at existing tankage. This value is based on the Owner directed assumptions of 1,500 Tons removed at \$650/ Ton. This value may go up or down depending on actual requirements.
2. **Unforeseen Conditions Allowance: \$500,000**  
The allowance is intended to fund all conditions unforeseen and/or concealed/hidden during the preconstruction and construction phases of the project.
3. **Permit Allowance: \$25,000**  
The allowance is intended to fund all costs for permits (Building Permits, Trade Permits, Inspections, etc.).
4. **Material Testing: \$50,000**  
The allowance is intended to fund all costs for material testing (Soil Testing, Concrete Testing, etc.)
5. **Landscaping Allowance: \$25,000**  
The allowance is intended to fund all costs for landscaping that may be required during the construction phase of the project. This value may go up or down depending on actual requirements.

## Attachment # 7 - Potential Direct Purchase Items

1. The Owner has directed the Design Builder that the Owner will not directly purchase any items for the project.