

Land Use Planning Presentation  
Regarding Z/LU-14-09-19  
Comprehensive Plan Amendment Request

Restoration Bay (formerly known as the Tides Golf Club)

Susan M. Finch, AICP

May 25, 2021

**Request: Amend the Pinellas County Comprehensive Plan from Residential/Open Space and Preservation to Residential Low and Preservation**

Pinellas County is the most densely populated County in Florida with 3,347 people per square mile.

Numerous Goals, Objectives and Policies that encourage the preservation of open space and preservation areas. Most notably:

From the Recreation, Open Space and Culture Element:

Objective 1.5: In recognition of the limited amount of available open space remaining within the County, Pinellas County shall prohibit the conversion of dedicated recreation/open space land uses and encourage the retention of non-dedicated recreation/open space land uses.

## **Countywide Plan Rules Address Need to Retain Open Space**

\*Countywide Plan Rules LU 12.1: In recognition of the limited amount of available open space remaining within the County, strongly discourage the conversion of Recreation/Open Space and Preservation to other designations.

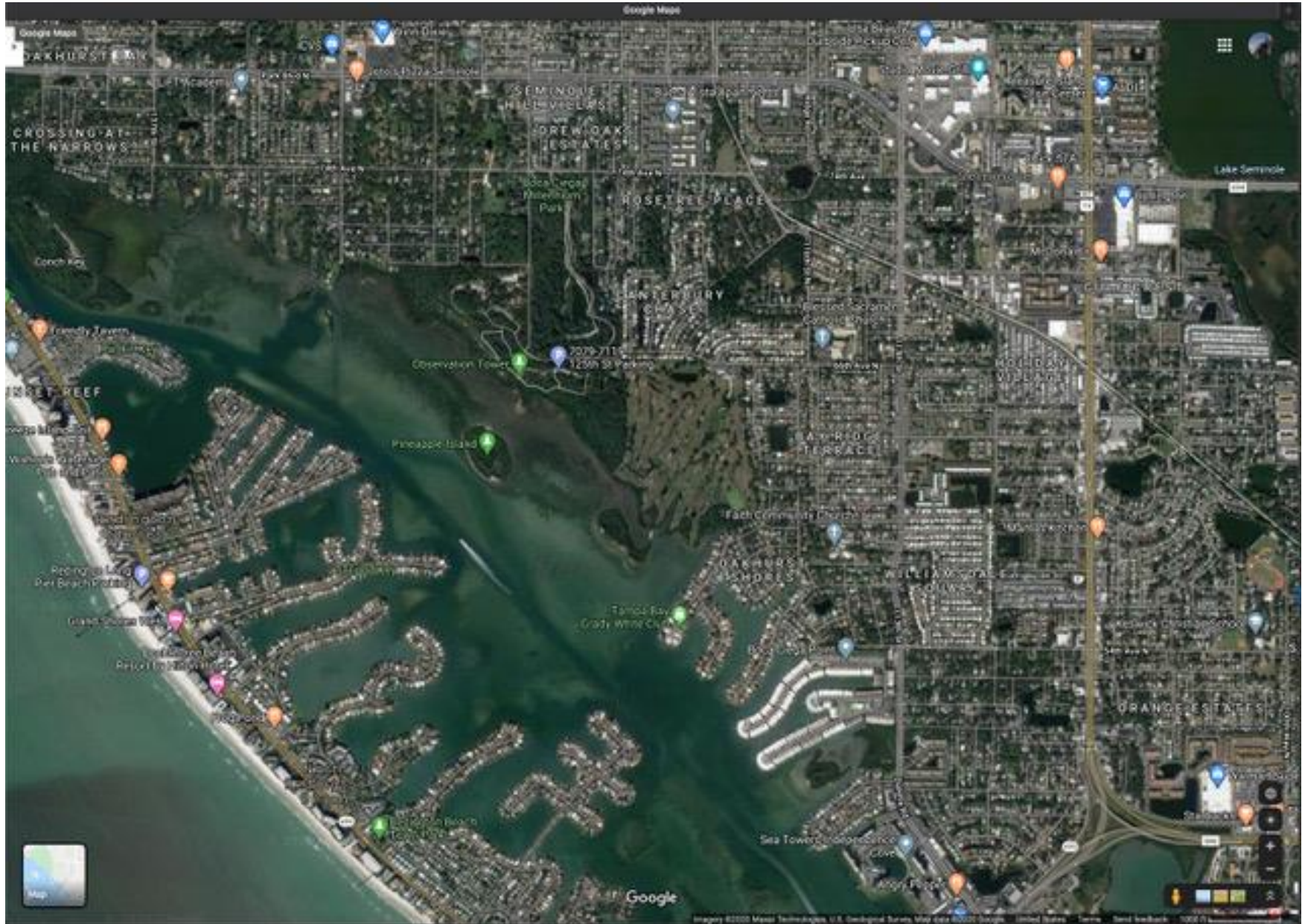
\*Countywide Plan Rules LU 12.4: Discourage the conversion of golf courses to other land uses without addressing how the loss of open space and recreational opportunities for the community will be mitigated.

## **Comprehensive Plan Locational Characteristic for the RL Land Use Category**

The RL category states:

“the RL category is only appropriate in the 100 year floodplain if the Preservation and/or Recreation/Open Space categories are not feasible.”

# Before Aerial of Property and Surrounding Area



# After Aerial of Property and Surrounding Area

