

Medical Examiner

Dr. Jon R. Thogmartin, Medical Examiner

OMB Budget Analyst: Toni Merrill

Department Purpose

The Medical Examiner safeguards the rights of each citizen who dies in Pinellas County by determining the cause and manner of death according to the responsibilities and obligations in Chapter 406, Florida Statutes. The Medical Examiner's Office provides both forensic medicine services (investigation of sudden, unexpected, or suspicious death) and forensic laboratory services (chemical and drug analyses) to Pinellas County on a contractual basis.

Budget Summary

All Funds

	FY22 Actual	FY23 Actual	FY24 Actual	FY25 Budget	FY26 Budget
Personnel Services	\$144,346	\$245,355	\$265,301	\$374,560	\$424,550
Operating Expenses	\$6,941,304	\$7,597,365	\$8,097,000	\$8,546,460	\$9,058,050
Capital Outlay	\$0	\$236,878	\$176,856	\$95,000	\$12,500
Grand Total	\$7,085,649	\$8,079,598	\$8,539,156	\$9,016,020	\$9,495,100

	FY22 Actual	FY23 Actual	FY24 Actual	FY25 Budget	FY26 Budget
FTE	2.0	2.0	2.0	3.0	3.0
Grand Total	2.0	2.0	2.0	3.0	3.0

0001- General Fund

	FY22 Actual	FY23 Actual	FY24 Actual	FY25 Budget	FY26 Budget
Personnel Services	\$144,346	\$245,355	\$265,301	\$374,560	\$424,550
Operating Expenses	\$6,941,304	\$7,597,365	\$8,097,000	\$8,546,460	\$9,058,050
Capital Outlay	\$0	\$236,878	\$176,856	\$95,000	\$12,500
Grand Total	\$7,085,649	\$8,079,598	\$8,539,156	\$9,016,020	\$9,495,100

	FY22 Actual	FY23 Actual	FY24 Actual	FY25 Budget	FY26 Budget
FTE	2.0	2.0	2.0	3.0	3.0
Grand Total	2.0	2.0	2.0	3.0	3.0

Budget Drivers

The FY26 Budget for the Medical Examiner, which is fully funded by the General

Fund reflects an increase of \$479,080, or (5.3%), from the FY25 Approved Budget of \$9.0M. There are no changes to staffing FTE in FY26.

Personal Services increases by \$49,990 or (13.3%) from the FY25 total of \$374,560. This increase is largely due to the addition of a 3rd DNA Analysis (in FY25) along with career path and ladders, position reclassifications, and Florida Retirement System (FRS) actuarial retirement increases.

The Department's FTE remains flat at 3.0.

Operating expenses are increasing \$429,090 or (5.0%). The FY26 Operating Budget includes an increase of \$522,200 or 6.3% for the ME contract of which Dr. Thogmartin's personnel costs are expected to increase \$274,439 from FY25 to FY26 a (3.0%) increase. The remainder of the increase is due to less outside revenue being collected due to less services being needed.

User Fees – 14 fees that are paid by non-Pinellas County jurisdictions for the Medical Examiner's Services are increasing in FY26. The Medical Examiner has added 2 additional fees one for the Rapid DNA analysis and one for Radiographic Body Scan. Note: The increase of these fee's helps to reduce Dr. Thogmartin's professional services charges to the county.

The interlocal agreement with Pasco County for use of the Medical Examiner facility is set to expire on September 30, 2025. Human Services is currently processing the year 1 renewal and it is currently in Granicus. To date, there have been no further discussions or any indication that Pasco County intends to construct its own facility or discontinue services with Pinellas County.

Under an ongoing interlocal agreement, the Manatee County Sheriff's Office continues to perform DNA analysis. The annual gross income of this contract will increase to \$262,500 in FY26 from \$250,000 in FY25 and is reflected in the proposed budget amounts. Pinellas County will continue to receive (20.0%) of this revenue directly.

CIP Report

- Governmental CIP projects were presented at the June 11th Governmental CIP Budget Information Session.

FY25 Accomplishments**Medical Examiner**

- Continued accreditation by National Association of Medical Examiners (NAME)
- 100% of Pathologist positions filled – all board certified (Reduced staff by one pathologist position)
- 99% of all autopsies completed within 24 hours of receipt of decedent remains.
- 99% of all cremation approvals completed within 12 hours of Funeral Home request.

Forensic Lab

- Received American Society of Crime Laboratory Director's Maximus award for the 4th consecutive year. This is awarded to the most fiscally and operationally efficient crime laboratories in the world.

- Maintained Accreditation to ISO/EIC-17025 which evaluates the quality of forensic science programs.
- Continued to implement Lean Six Sigma philosophies to increase efficiencies, reduce costs and maintain quality services.
- Completed over 10,000 requests for forensic analysis with an average turnaround time of 22 days.

Budget Summary by Program and Fund

Medical Examiner-District Six

Determines the cause and manner of death according to the responsibilities and obligations in Florida Statutes 406. Performs toxicology on Medical Examiner cases, determines the concentration of alcohol and controlled substances in DUI cases, and determines the DNA profile of samples and chemical composition of items submitted by law enforcement. Additionally, two DNA Specialists are Pinellas County employees and are not included in the Medical Examiner's contract which allows the County to maintain accreditation and provides the lab with access to the National Combined DNA Index System (CODIS).

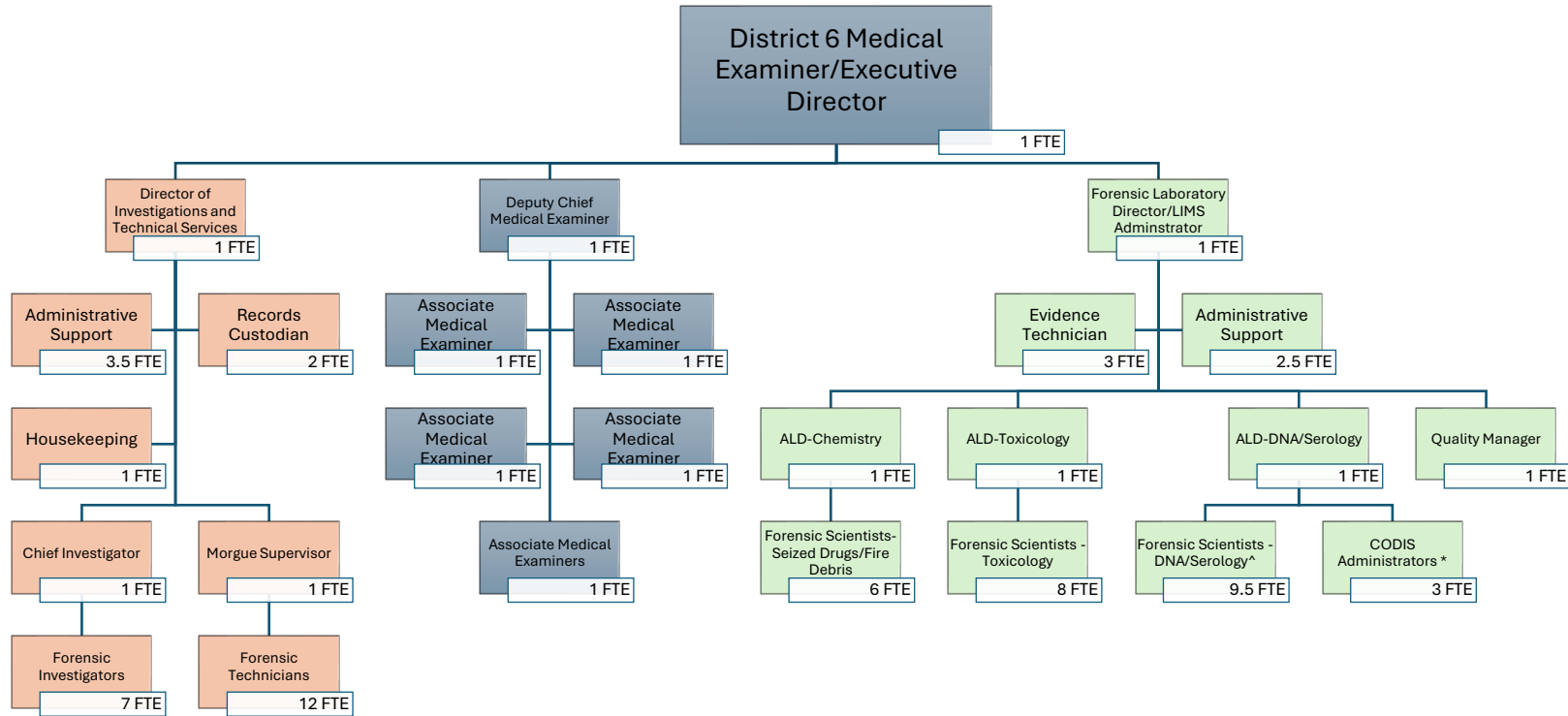
	FY22 Actual	FY23 Actual	FY24 Actual	FY25 Budget	FY26 Budget
General Fund	\$7,085,649	\$8,079,598	\$8,539,156	\$9,016,020	\$9,495,100
Grand Total	\$7,085,649	\$8,079,598	\$8,539,156	\$9,016,020	\$9,495,100

	FY22 Actual	FY23 Actual	FY24 Actual	FY25 Budget	FY26 Budget
FTE	2.0	2.0	2.0	3.0	3.0
Grand Total	2.0	2.0	2.0	3.0	3.0

Attachments:

1. Organizational Chart (p.4)
2. Budget Reports
 - a. By Program (p.5)
3. User Fees Report (p.6)

District Six Medical Examiner/Pinellas County Forensic Laboratory Organizational Chart 2025



^1.5 FTE Grant Funded

* County Positions

Medical Examiner General Fund

Account	FY22 Actual	FY23 Actual	FY24 Actual	FY25 Budget	FY26 Request	Budget to Budget Change	Budget to Budget % Change	OMB Notes
5110001 - Executive Salaries	92,898	153,409	160,014	225,000	251,670	26,670	11.85%	Additional FTE DNA Analysis
5210001 - FICA Taxes	6,853	10,722	11,430	17,210	19,250	2,040	11.85%	Additional FTE DNA Analysis
5220001 - Retirement Contributions	24,459	44,236	53,618	75,170	91,620	16,450	21.88%	Additional FTE DNA Analysis
5230001 - Hlth,Life,Dntl,Std,Ltd	20,136	36,988	40,239	57,180	62,010	4,830	8.45%	Additional FTE DNA Analysis
5310001 - Professional Services	6,778,360	7,270,603	7,806,970	8,312,480	8,834,680	522,200	6.28%	Dr. Thogmartin's contract includes increases to wages that were approved last FY to bring staff to midpoint. This was phase 2 of the increase with phase 1 being in FY25.
5340001 - Other Contractual Svcs	1,276	26,999	44,000	0	0	0	-	
5460001 - Repair&Maintenance Svcs	17,965	29,054	32,546	0	0	0	-	
5490001 - Othr Current Chgs&Obligat	233	(233)	0	0	0	0	-	
5496551 - Intgv Sv-Risk Financing	32,430	38,870	24,680	33,440	35,110	1,670	4.99%	
5510001 - Office Supplies Exp	0	2,369	0	0	0	0	-	
5520001 - Operating Supplies Exp	1,276	165,028	153,096	0	164,670	164,670	-	
5520004 - Oper. Supplies-Lab	84,923	29,316	7,146	164,670	0	(164,670)	-100.00%	
5520091 - Equipment purchases under \$5,000	0	0	2,220	0	0	0	-	
5520098 - PC Purchases under \$5,000	24,840	35,359	26,342	35,870	23,590	(12,280)	-34.23%	Decrease in FY26 replacement schedule.
5640001 - Machinery And Equipment	0	236,878	176,856	50,000	12,500	(37,500)	-75.00%	Grant funded equipment for FY25.
5680100 - Software-Purchased	0	0	0	45,000	0	(45,000)	-100.00%	No software updates needed in FY26
Expenditures Total	7,085,650	8,079,598	8,539,156	9,016,020	9,495,100	479,080	5.3%	

Schedule A

Fees Paid by Pasco County and outside agencies for Medical Examiner and Forensic

Laboratory Services

10/01/25

Services

<i>Autopsies-Complete (per case)</i>	<i>\$925.00</i>
<i>Autopsies-Head (per case)</i>	<i>\$150.00</i>
<i>Cases Examined (per case)</i>	<i>\$350.00</i>
<i>Cremation Approval (per approval)</i>	<i>\$30.00</i>
<i>Scene Response (per response)</i>	<i>\$185.00</i>

Laboratory Exams and Related Services

<i>DUI Drug Screen (per specimen type)</i>	<i>\$350.00</i>
<i>Alcohol Level (per specimen type/time)</i>	<i>\$110.00</i>
<i>Tox Drug Screen – Full (per specimen type)</i>	<i>\$225.00</i>
<i>Tox Drug Screen – Partial (per specimen type)</i>	<i>\$110.00</i>
<i>Tox Drug Quantitation (per drug)</i>	<i>\$120.00</i>
<i>Carbon Monoxide (per case)</i>	<i>\$50.00</i>
<i>Inhalants Screen and Confirmation (per specimen type)</i>	<i>\$100.00</i>
<i>Radiographic body scan</i>	<i>\$200.00</i>
<i>X-RAY -General (per image)</i>	<i>\$55.00</i>
<i>X-RAY -Dental (per image)</i>	<i>\$25.00</i>
<i>Fire Debris Analysis (per item)</i>	<i>\$150.00</i>
<i>Seized Drug Analysis (per item)</i>	<i>\$175.00</i>
<i>DNA Decedent ID - blood (per decedent)</i>	<i>\$500.00</i>
<i>DNA Decedent ID -tooth or bone (per decedent)</i>	<i>\$600.00</i>
<i>DNA STR Forensic Analysis (per item)</i>	<i>\$550.00</i>
<i>DNA YSTR Add-on (per item)</i>	<i>\$400.00</i>
<i>Rapid DNA analysis (per item)</i>	<i>\$350.00</i>

Transport Fees

<i>Body Transport (per decedent)</i>	<i>\$210.00</i>
<i>Out of County Body Transport (per decedent)</i>	<i>\$300.00</i>
<i>Body pouch (per decedent)</i>	<i>\$55.00</i>

Storage

<i>Body Storage (per decedent/per day)</i>	<i>\$10.00</i>
--	----------------