

**ZLU-07-05-18**

**Location Map**

**Zoning**

**From:** R-4, One, Two & Three Family Residential

**To:** C-2, General Retail Commercial & Limited Services

**Land Use**

**From:** Residential Urban

**To:** Commercial General

A PORTION OF PARCEL 03/31/16/51048/041/0130

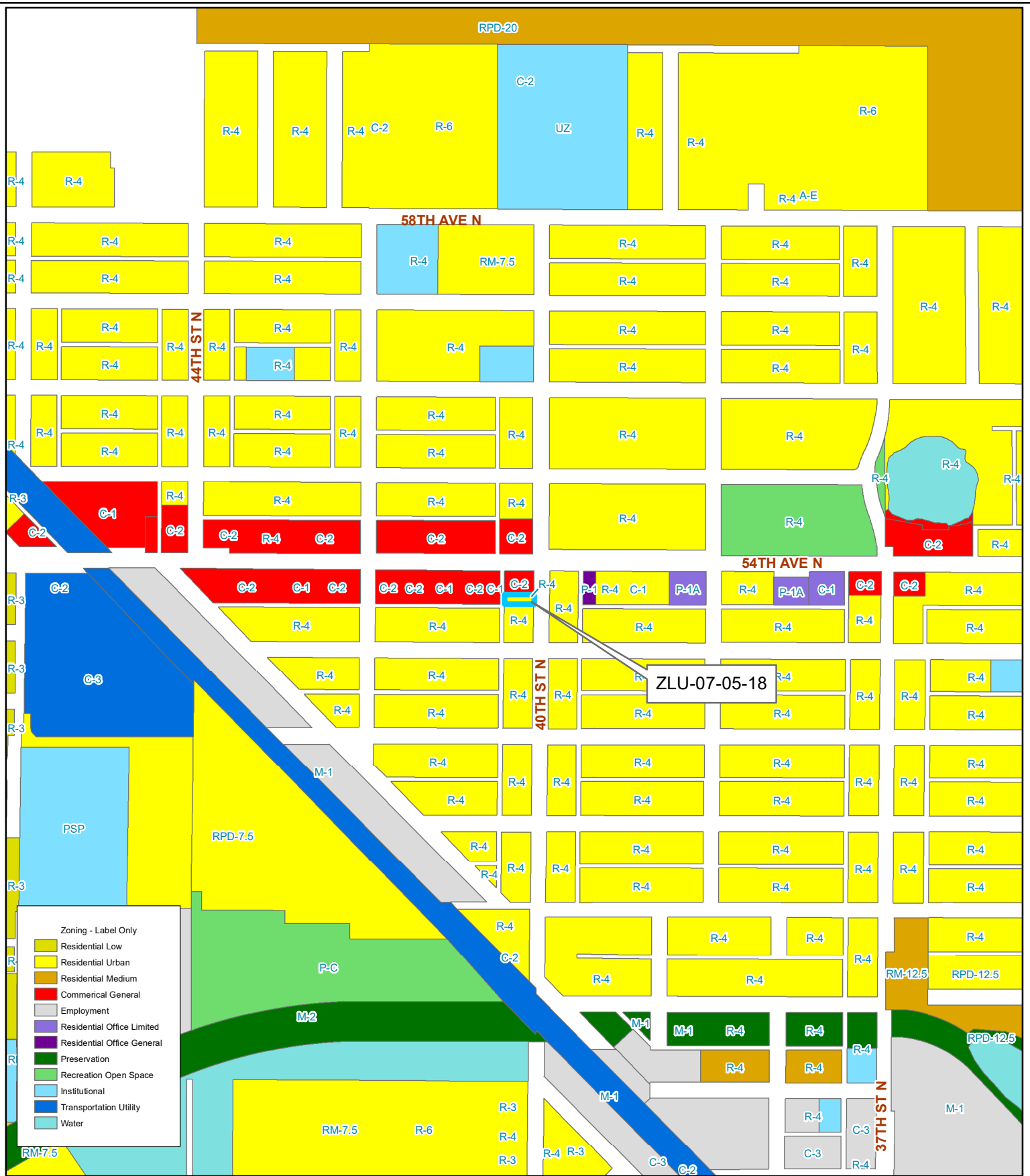
Prepared by: Pinellas County Planning Department



Date: 3/26/2018



1 inch = 4.5 miles



- Zoning - Label Only
- Residential Low
  - Residential Urban
  - Residential Medium
  - Commercial General
  - Employment
  - Residential Office Limited
  - Residential Office General
  - Preservation
  - Recreation Open Space
  - Institutional
  - Transportation Utility
  - Water

**ZLU-07-05-18**  
**Current Future Land Use & Zoning**

**Zoning** From: R-4, One, Two & Three Family Residential  
 To: C-2, General Retail Commercial & Limited Services

**Land Use** From: Residential Urban  
 To: Commercial General

A PORTION OF PARCEL 03/31/16/51048/04/0130

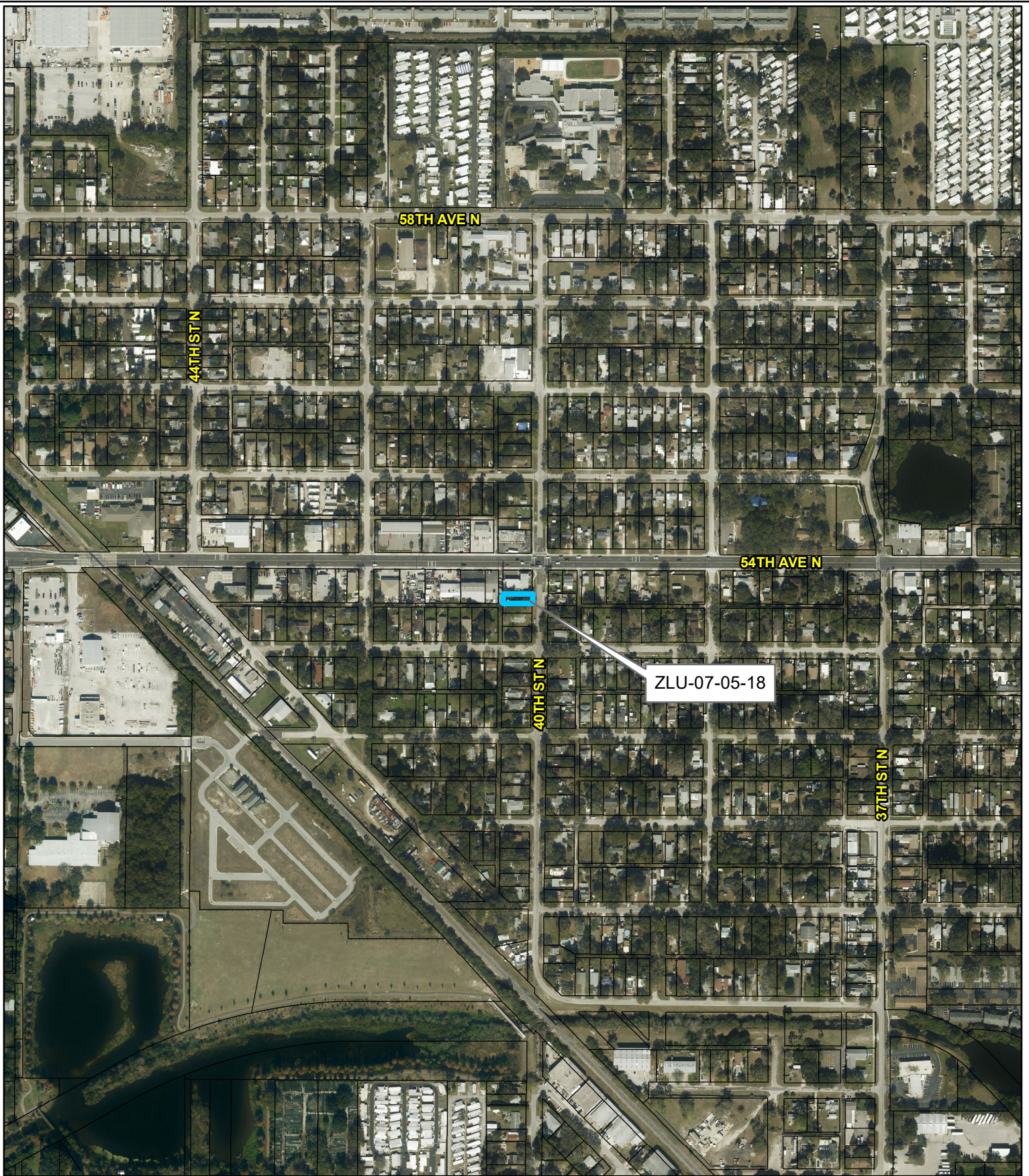
Prepared by: Pinellas County Planning Department



Date: 3/26/2018



1 inch = 0.09 miles



**ZLU-07-05-18**

**Aerial Map**

**Zoning**

**From:** R-4, One, Two & Three Family Residential

**To:** C-2, General Retail Commercial & Limited Services

**Land Use**

**From:** Residential Urban

**To:** Commercial General

A PORTION OF PARCEL 03/31/16/51048/041/0130

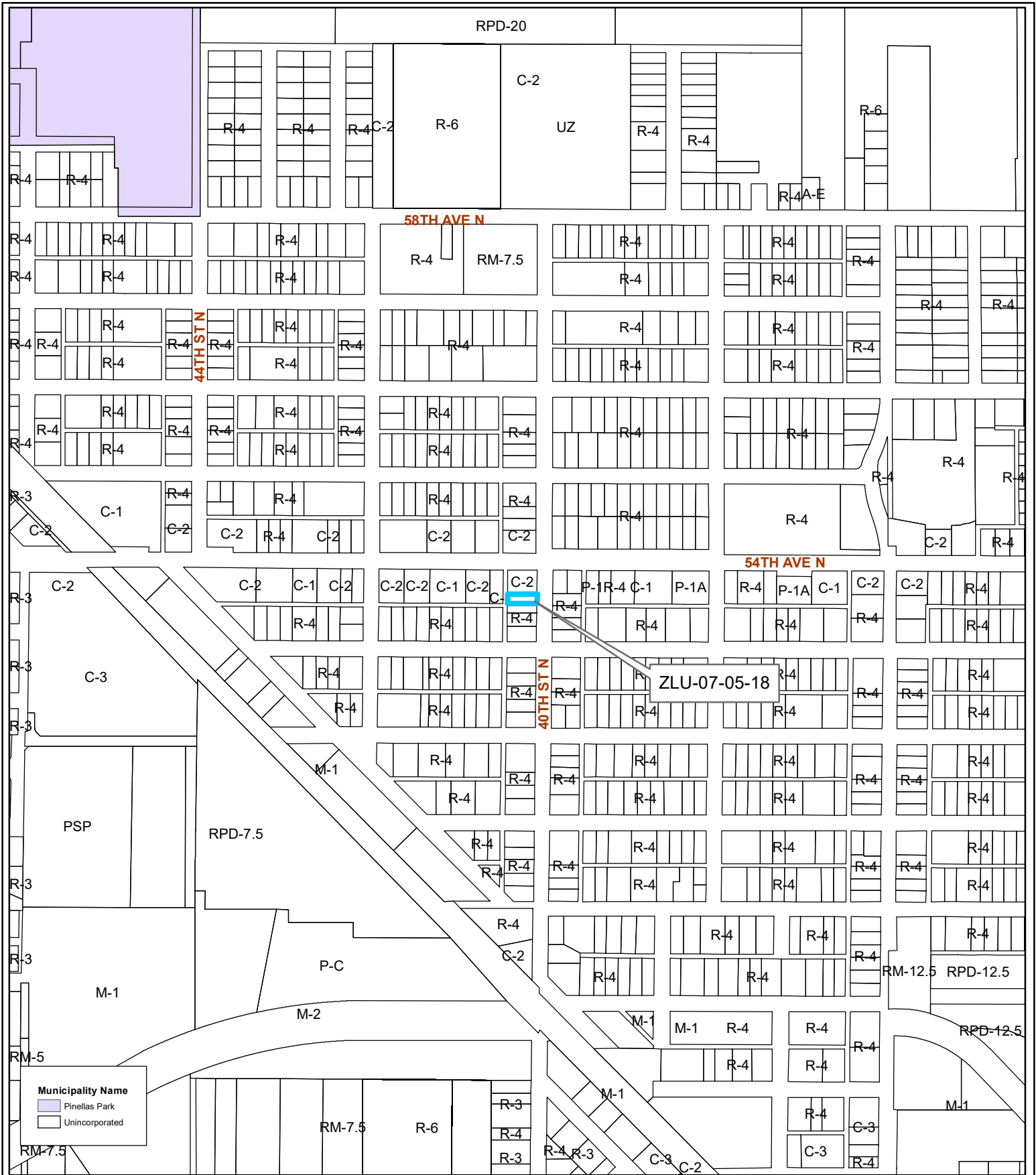
Prepared by: Pinellas County Planning Department



Date: 3/26/2018



1 inch = 0.09 miles



**ZLU-07-05-18**

**Municipal Map**

**Zoning**

**From:** R-4, One, Two & Three Family Residential

**To:** C-2, General Retail Commercial & Limited Services

**Land Use**

**From:** Residential Urban

**To:** Commercial General

A PORTION OF PARCEL 03/31/16/51048/041/0130

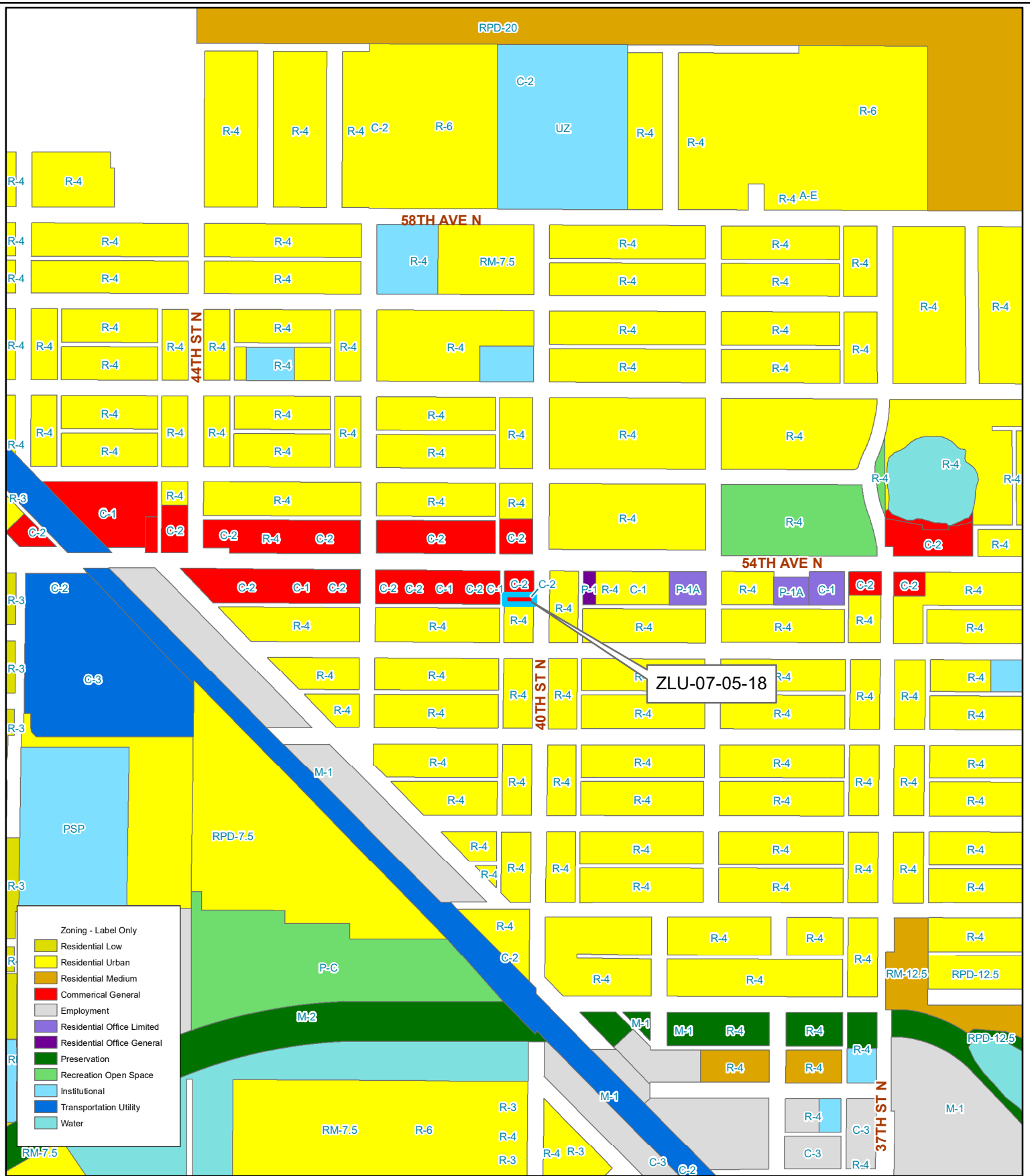
Prepared by: Pinellas County Planning Department



Date: 3/26/2018



1 inch = 0.09 miles



- Zoning - Label Only
- Residential Low
  - Residential Urban
  - Residential Medium
  - Commercial General
  - Employment
  - Residential Office Limited
  - Residential Office General
  - Preservation
  - Recreation Open Space
  - Institutional
  - Transportation Utility
  - Water

**ZLU-07-05-18**  
**Proposed Future Land Use & Zoning**

**Zoning** From: R-4, One, Two & Three Family Residential  
 To: C-2, General Retail Commercial & Limited Services

**Land Use** From: Residential Urban  
 To: Commercial General



A PORTION OF PARCEL 03/31/16/51048/04/10130

Prepared by: Pinellas County Planning Department



Date: 3/26/2018

1 inch = 0.09 miles