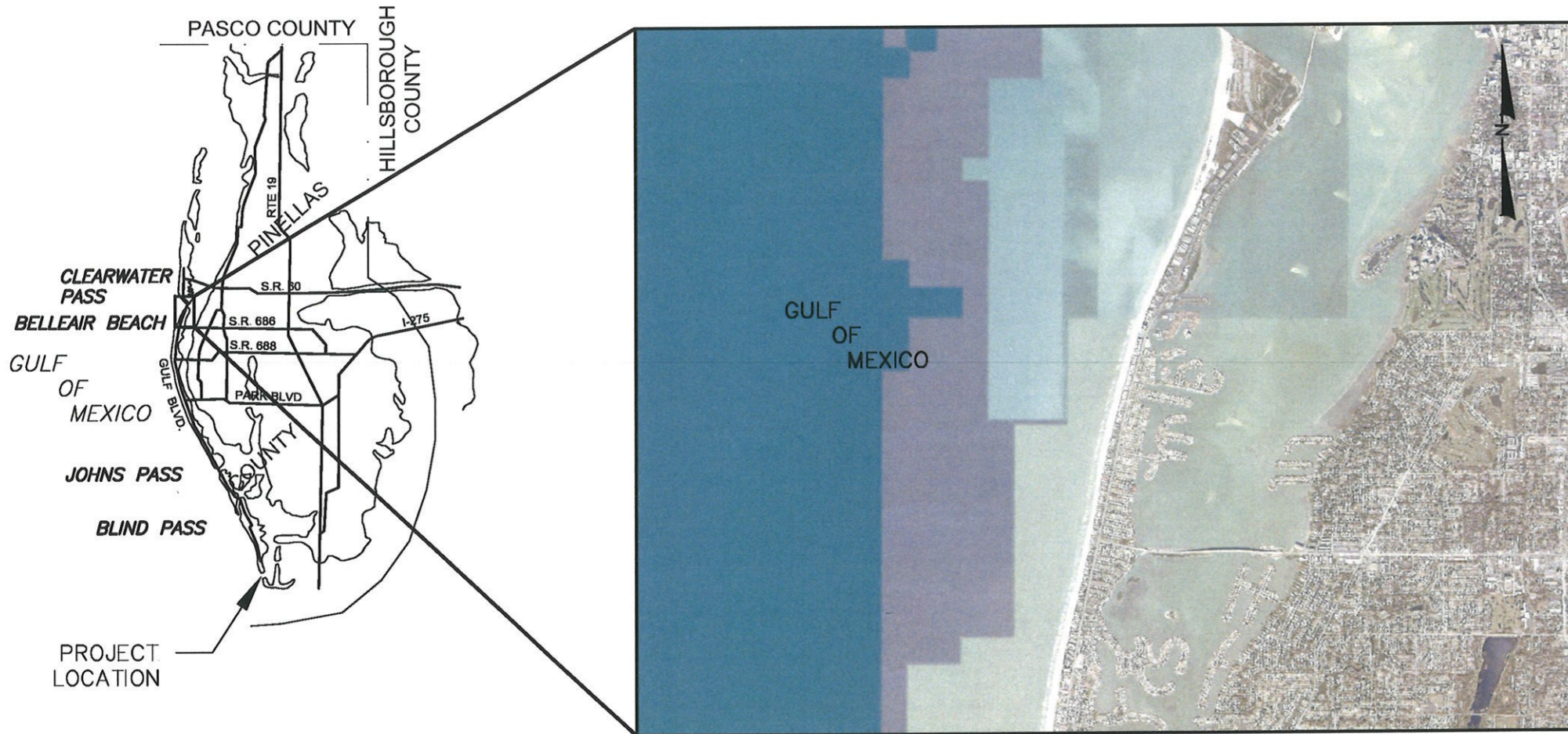




PINELLAS COUNTY, FLORIDA POST IDALIA EMERGENCY SHORE STABILIZATION BELLEAIR BEACH PID No. 006241A



PINELLAS COUNTY COMMISSION	
JANET C. LONG	DISTRICT 1 2023 CHAIR
BRIAN SCOTT	DISTRICT 2
CHARLIE JUSTICE	DISTRICT 3
DAVE EGGERS	DISTRICT 4
CHRIS LATVALA	DISTRICT 5
KATHLEEN PETERS	DISTRICT 6 2023 VICE CHAIR
RENE' FLOWERS	DISTRICT 7

SHEET INDEX	
NO.	TITLE
1.	COVER SHEET
2.	CONTROL DATA
3.-8.	PLAN VIEWS
9.-11.	CROSS SECTIONS



CERTIFICATION:
I CERTIFY THAT THESE PLANS ARE IN COMPLIANCE
WITH THE APPLICABLE SECTIONS OF 62B-41, F.A.C.

NICOLE S. SHARP, P.E. NO. 74708

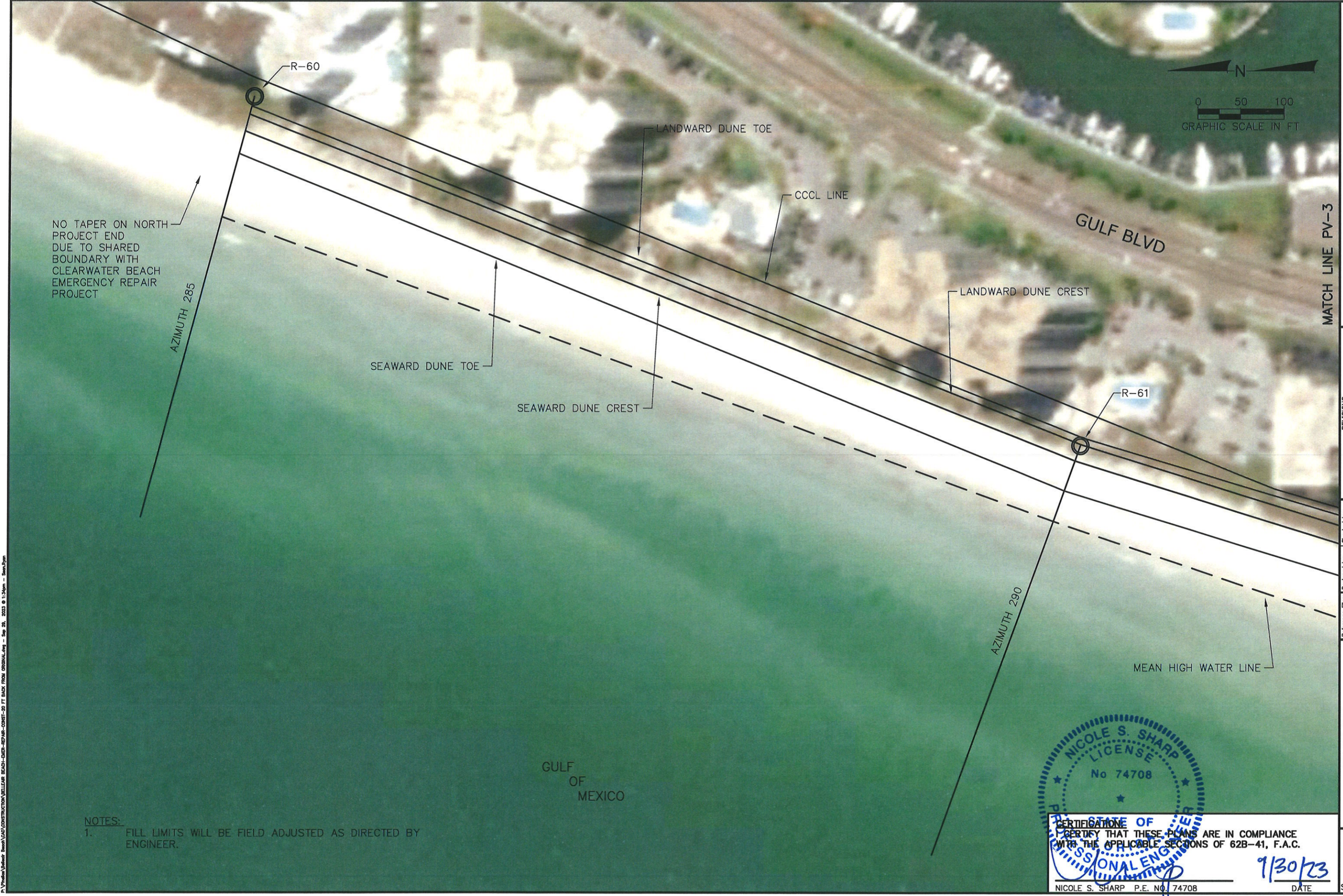
9/30/23
DATE

Aptim Environmental & Infrastructure, LLC

6401 CONGRESS AVENUE, SUITE 140
BOCA RATON, FLORIDA 33487
www.aptim.com



PH. (561) 391-8102
FAX (561) 391-9116
C.O.A. FL. #9317
C.O.A. LA. #2531



NO TAPER ON NORTH PROJECT END DUE TO SHARED BOUNDARY WITH CLEARWATER BEACH EMERGENCY REPAIR PROJECT

NOTES:
 1. FILL LIMITS WILL BE FIELD ADJUSTED AS DIRECTED BY ENGINEER.

NICOLE S. SHARP
 LICENSE
 No 74708
 STATE OF FLORIDA
 PROFESSIONAL ENGINEER

CERTIFICATION
 I CERTIFY THAT THESE PLANS ARE IN COMPLIANCE WITH THE APPLICABLE SECTIONS OF 62B-41, F.A.C.

DATE: 9/30/23

MATCH LINE PV-3

Aptim Environmental & Infrastructure, LLC
 PH. (561) 391-8102
 FAX (561) 391-9116
 C.O.A. FL. #9317
 C.O.A. LA. #2531
 6401 CONGRESS AVENUE, SUITE 140
 BOCA RATON, FLORIDA 33487
 www.aptim.com

Reference Files	Designed by	Checked by	REVISIONS
	NS	NS	
	JEB	NS	
	Date: 9/27/23	NS	
	Plot Scale: AS NOTED	Submitted by: NS	
		Comm. No.: XXXXXXXX	
		No. Date	Description

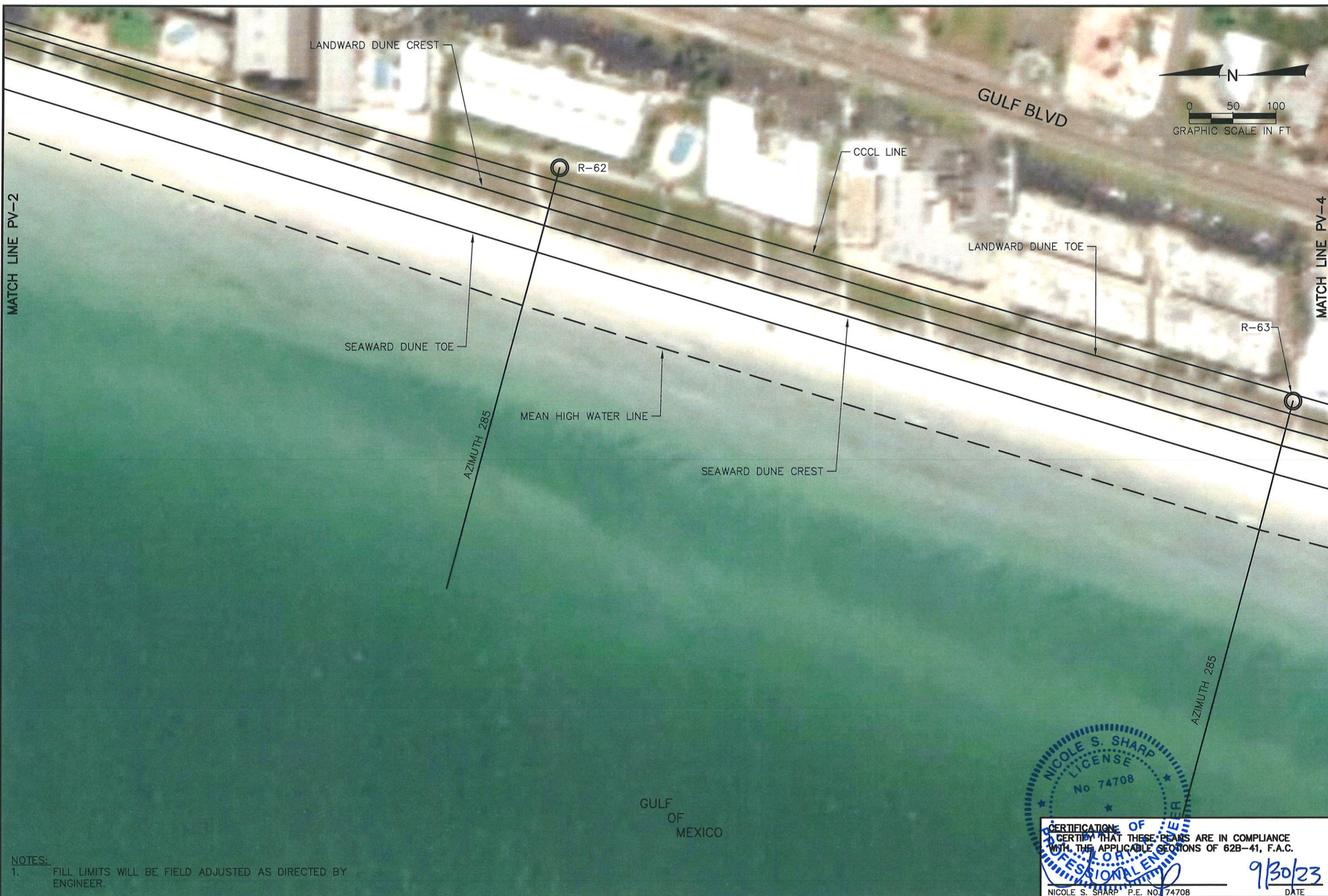
BELLAIR BEACH
 EMERGENCY REPAIR PROJECT
 PINELLAS COUNTY, FLORIDA
 PLAN VIEW

DRAWING NO.
 PV-2
 SHEET 4 OF 11

P:\Projects\Belair Beach\CONSTRUCTION\BELLAIR BEACH-EMERGENCY REPAIR-CONSTR-20 FT BACK FROM ORIGNAL.Lay - Sep 20, 2023 @ 11:34am - Ben Ryan

MATCH LINE PV-2

MATCH LINE PV-4



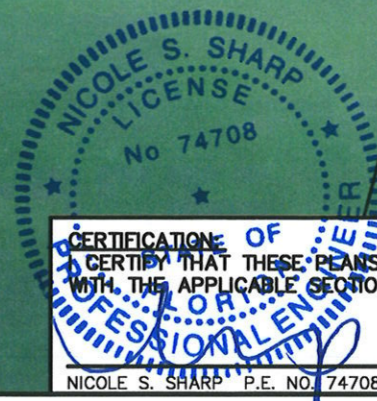
Aptim Environmental & Infrastructure, LLC
 PH. (561) 391-8102
 FAX (561) 391-9116
 C.O.A. FL. #9317
 C.O.A. LA. #2531

6401 CONGRESS AVENUE, SUITE 140
 BOCA RATON, FLORIDA 33487
 www.apfim.com

Reference Files	Designed by:	Checked by:	REVISIONS
	NS	NS	
	Drawn by: JEB	Reviewed by: NS	
	Date: 9/27/23	Submitted by: NS	
	Plot Scale: AS NOTED	Comm. No.: XXXXXXXX	
			No. Date Description

BELLEAIR BEACH
 EMERGENCY REPAIR PROJECT
 PINELLAS COUNTY, FLORIDA

PLAN VIEW



CERTIFICATION OF
 I CERTIFY THAT THESE PLANS ARE IN COMPLIANCE
 WITH THE APPLICABLE SECTIONS OF 62B-41, F.A.C.

NICOLE S. SHARP P.E. NO. 74708

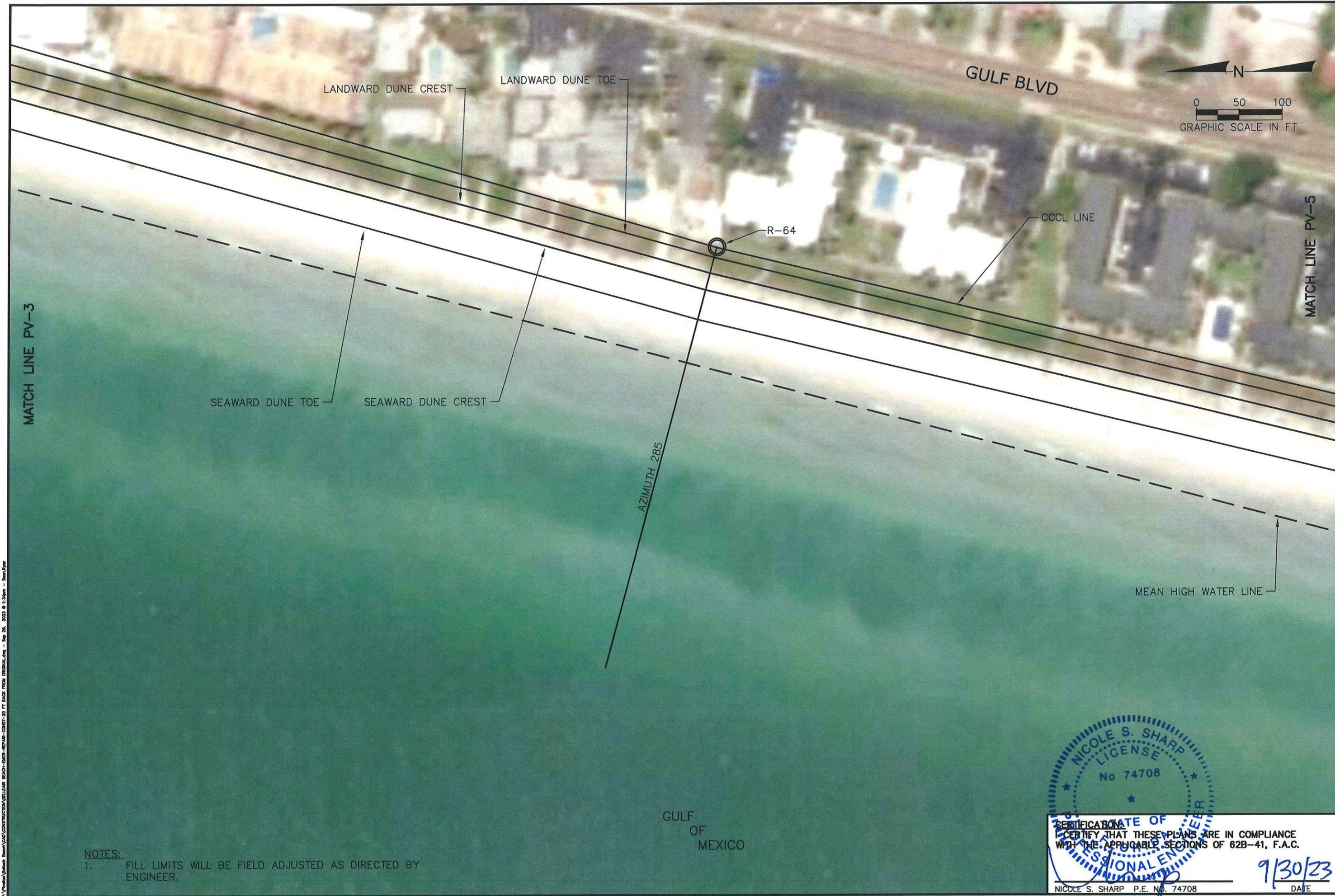
9/30/23

DATE

DRAWING NO.
PV-3
 SHEET 5 OF 11

NOTES:
 1. FILL LIMITS WILL BE FIELD ADJUSTED AS DIRECTED BY ENGINEER.

P:\Projects\Belleair Beach\CONSTRUCTION\BELLEAIR BEACH-EMERGENCY REPAIR-CONTRACT-20 FT BACK FROM ORIGINAL.dwg - Sep 20, 2023 @ 11:34am - Ben Ryan



Aptim Environmental & Infrastructure, LLC
 PH. (861) 391-8102
 FAX (861) 391-9716
 C.O.A. FL #8317
 C.O.A. LA #2531

6401 CONGRESS AVENUE, SUITE 140
 BOCA RATON, FLORIDA 33487
 www.aptim.com

REVISIONS	No.	Date	Description

Designed by NS	Checked by NS
Drawn by JEB	Reviewed by NS
Date: 9/27/23	Submitted by NS
Plot Scale: AS NOTED	Comm. No. XXXXXXXX

Reference Files:

**BELLEAIR BEACH
 EMERGENCY REPAIR PROJECT
 PINELLAS COUNTY, FLORIDA**

PLAN VIEW

DRAWING NO.
PV-4

SHEET 6 OF 11

**NICOLE S. SHARP
 LICENSE
 No 74708**

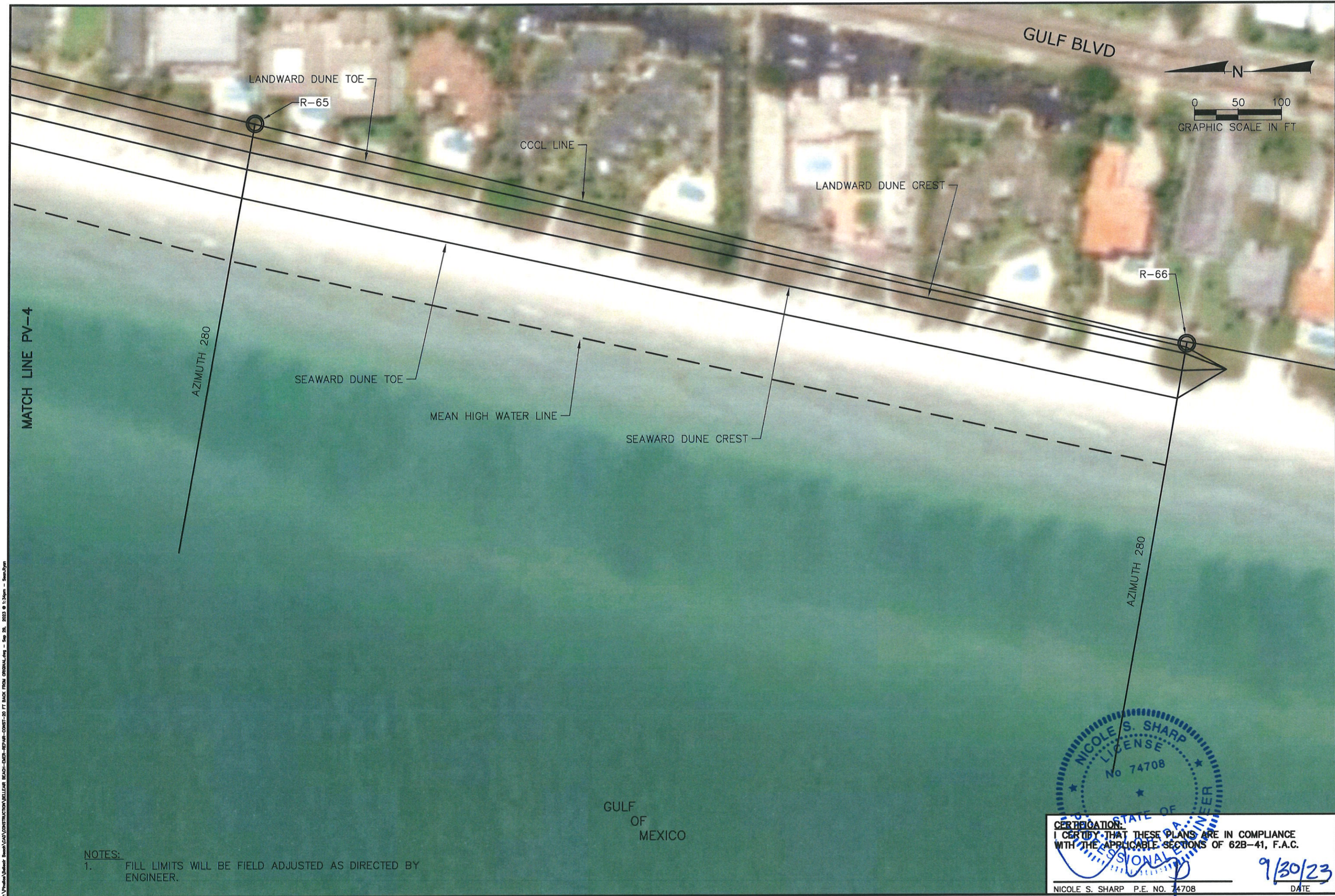
CERTIFICATION
 I CERTIFY THAT THESE PLANS ARE IN COMPLIANCE
 WITH THE APPLICABLE SECTIONS OF 62B-41, F.A.C.

9/30/23
 DATE

NICOLE S. SHARP P.E. No. 74708

NOTES:
 1. FILL LIMITS WILL BE FIELD ADJUSTED AS DIRECTED BY ENGINEER.

P:\Projects\Belleair Beach\CONSTRUCTION\BELLEAIR BEACH-EMERGENCY REPAIR-CONSTR-20 FT BACK FROM ORIGINAL.dwg - Sep 20, 2023 @ 11:34am - Ben Ryan



NOTES:
 1. FILL LIMITS WILL BE FIELD ADJUSTED AS DIRECTED BY ENGINEER.

NICOLE S. SHARP
 LICENSE
 No 74708
 PROFESSIONAL ENGINEER

CERTIFICATION:
 I CERTIFY THAT THESE PLANS ARE IN COMPLIANCE WITH THE APPLICABLE SECTIONS OF 62B-41, F.A.C.

NICOLE S. SHARP P.E. NO. 74708

9/30/23

DATE

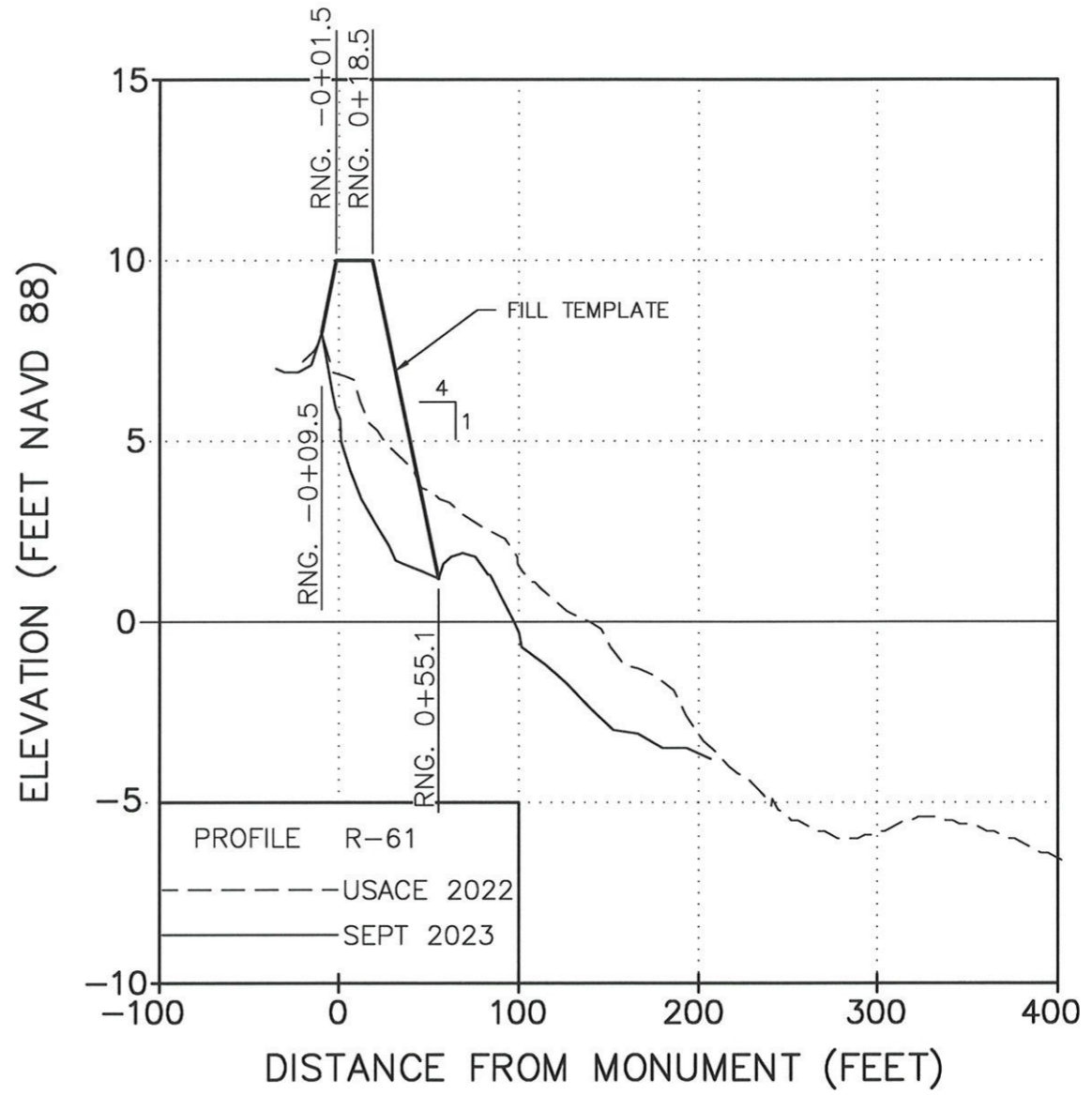
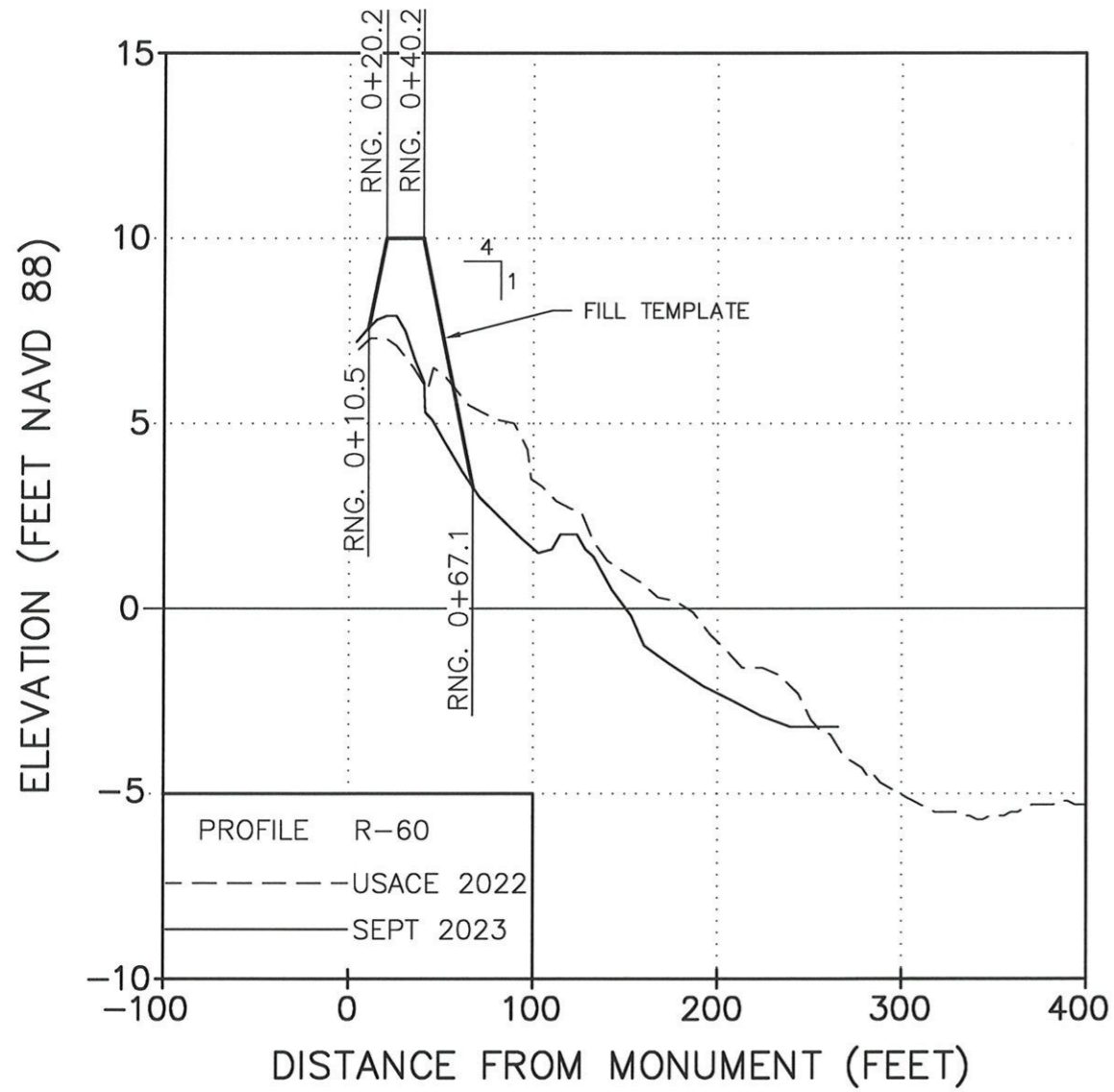
Aptim Environmental & Infrastructure, LLC
 PH. (561) 391-5102
 FAX (561) 391-9716
 C.O.A. FL #9317
 C.O.A. LA #2531
 6401 CONGRESS AVENUE, SUITE 140
 BOCA RATON, FLORIDA 33487
 www.aptim.com

Reference Files:	Designed by:	Checked by:	REVISIONS
	NS	NS	
	Drawn by:	Reviewed by:	
	JEB	NS	
	Date:	Submitted by:	
	9/27/23	NS	
	Plot Scale:	Comm. No.:	
	AS NOTED	XXXXXXXX	
			No. Date Description

BELLEAIR BEACH
 EMERGENCY REPAIR PROJECT
 PINELLAS COUNTY, FLORIDA
 PLAN VIEW

DRAWING NO.
PV-5
 SHEET 7 OF 11

P:\Production\Belleair Beach\CONSTRUCTION\BELLEAIR BEACH-EMERGENCY REPAIR-CONSTR-20 FT BACK FROM ORIGINAL.dwg - Sep 20, 2023 @ 11:34am - Ben Ryan



STATE OF FLORIDA
 PROFESSIONAL ENGINEER
 NICOLE S. SHARP
 LICENSE No. 74708

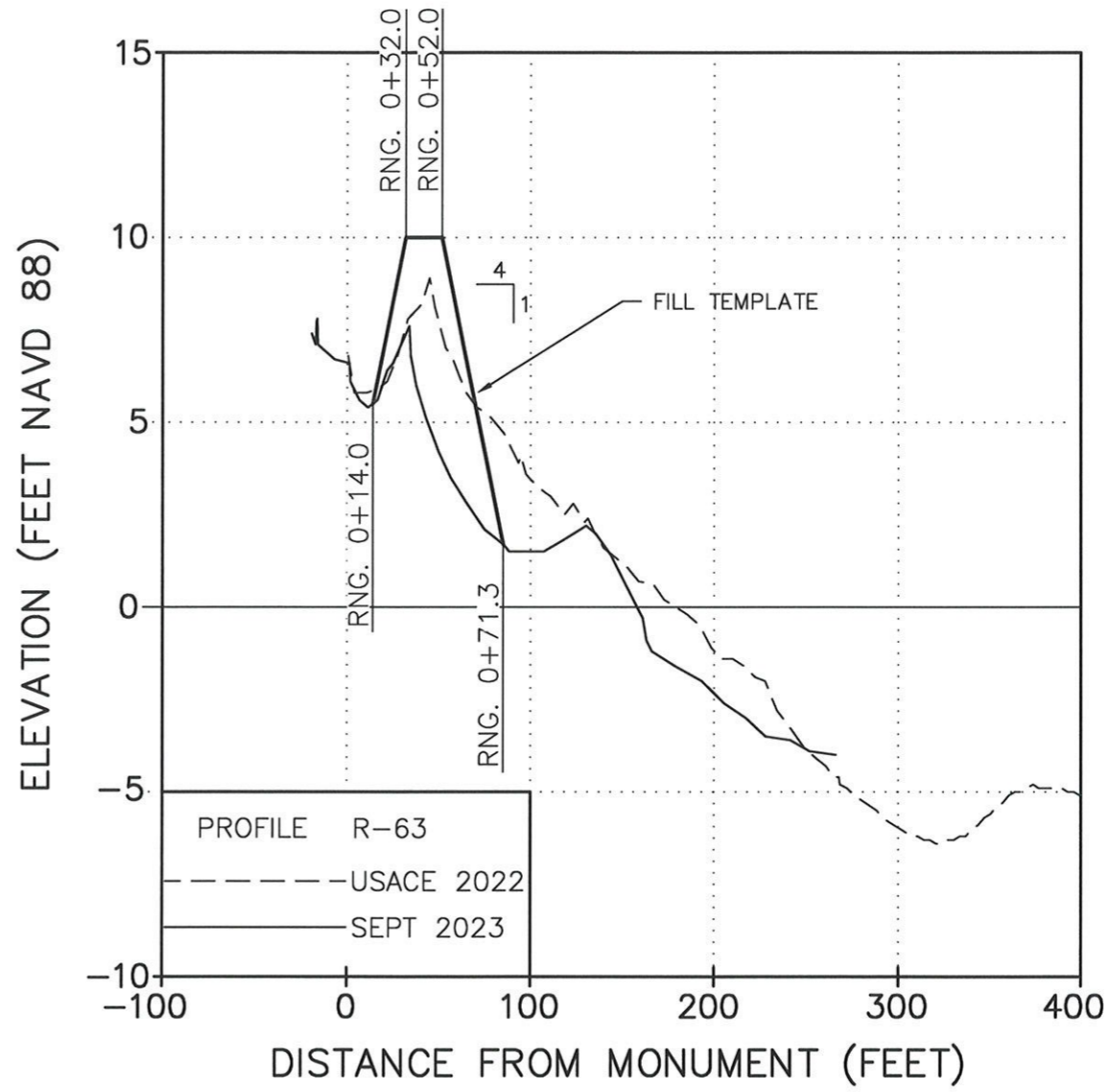
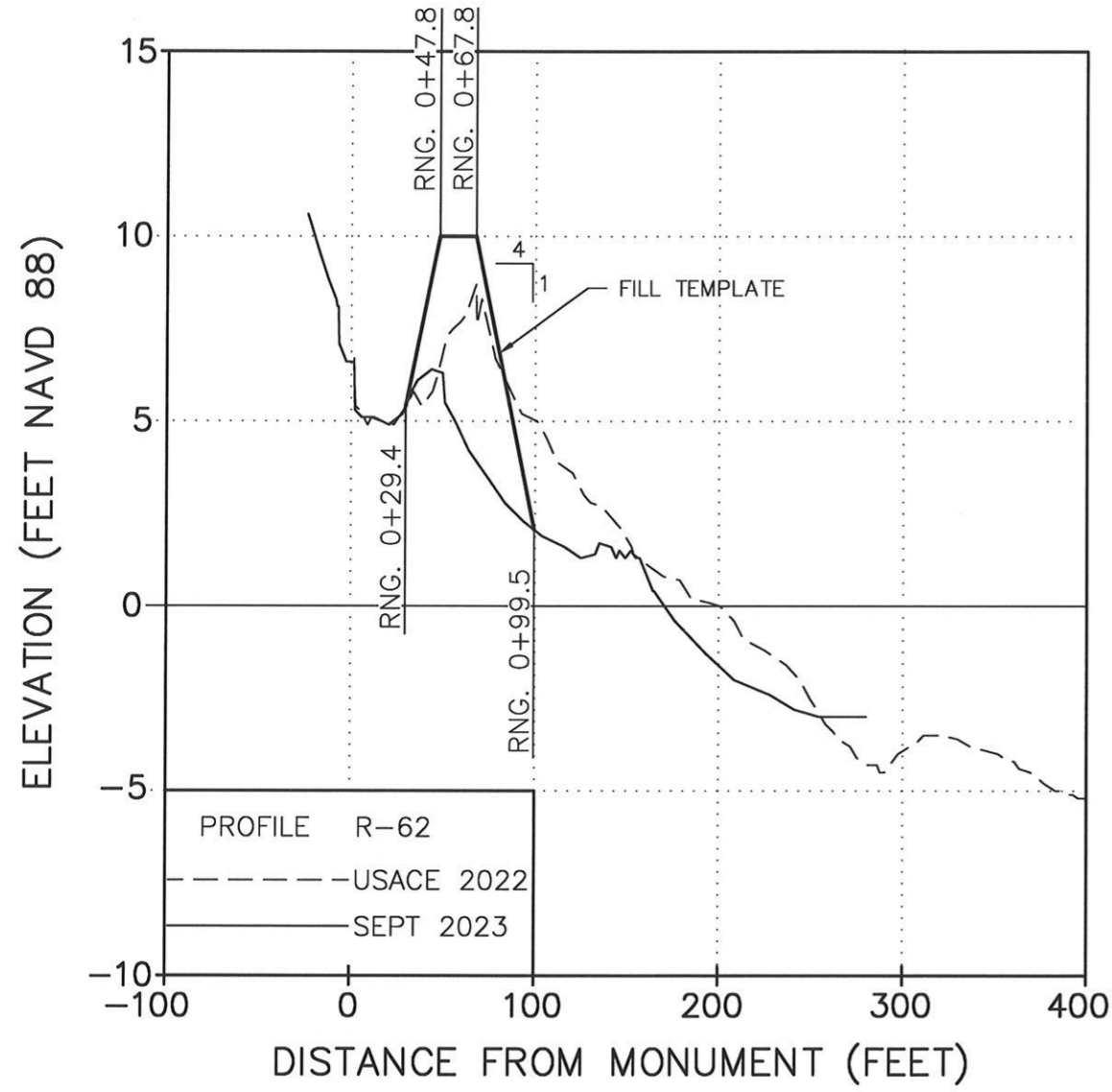
CERTIFICATION:
 I CERTIFY THAT THESE PLANS ARE IN COMPLIANCE
 WITH THE APPLICABLE SECTIONS OF 62B-41, F.A.C.

 NICOLE S. SHARP P.E. NO. 74708

DATE
 9/30/23

Aptim Environmental & Infrastructure, LLC		PH. (561) 391-8102 FAX (561) 391-9116 C.O.A. FL. #9317 C.O.A. LA. #2531	
6401 CONGRESS AVENUE, SUITE 140 BOCA RATON, FLORIDA 33487 www.apfim.com			
BELLEAIR BEACH EMERGENCY REPAIR PROJECT PINELLAS COUNTY, FLORIDA		CROSS SECTION	
DRAWING NO. XS-1		SHEET 8 OF 11	
REVISIONS		Checked by: NS Drawn by: JEB Date: 9/27/23 Print Scale: AS NOTED	
Reference Files		Referred by: NS Submitted by: NS Comm. No.: XXXXXXXX No. Date Description	

P:\Projects\Belleair Beach\CONSTRUCTION\Belleair Beach-EMR-REPAIR-CONST-20 FT BACK FROM ORIGINAL.dwg - Sep 29, 2023 @ 1:34pm - Sean Ryan



NICOLE S. SHARP
 LICENSE
 No. 74708
 STATE OF FLORIDA
 PROFESSIONAL ENGINEER

CERTIFICATION:
 I CERTIFY THAT THESE PLANS ARE IN COMPLIANCE
 WITH THE APPLICABLE SECTIONS OF 62B-41, F.A.C.

 NICOLE S. SHARP P.E. NO. 74708 DATE **9/30/23**

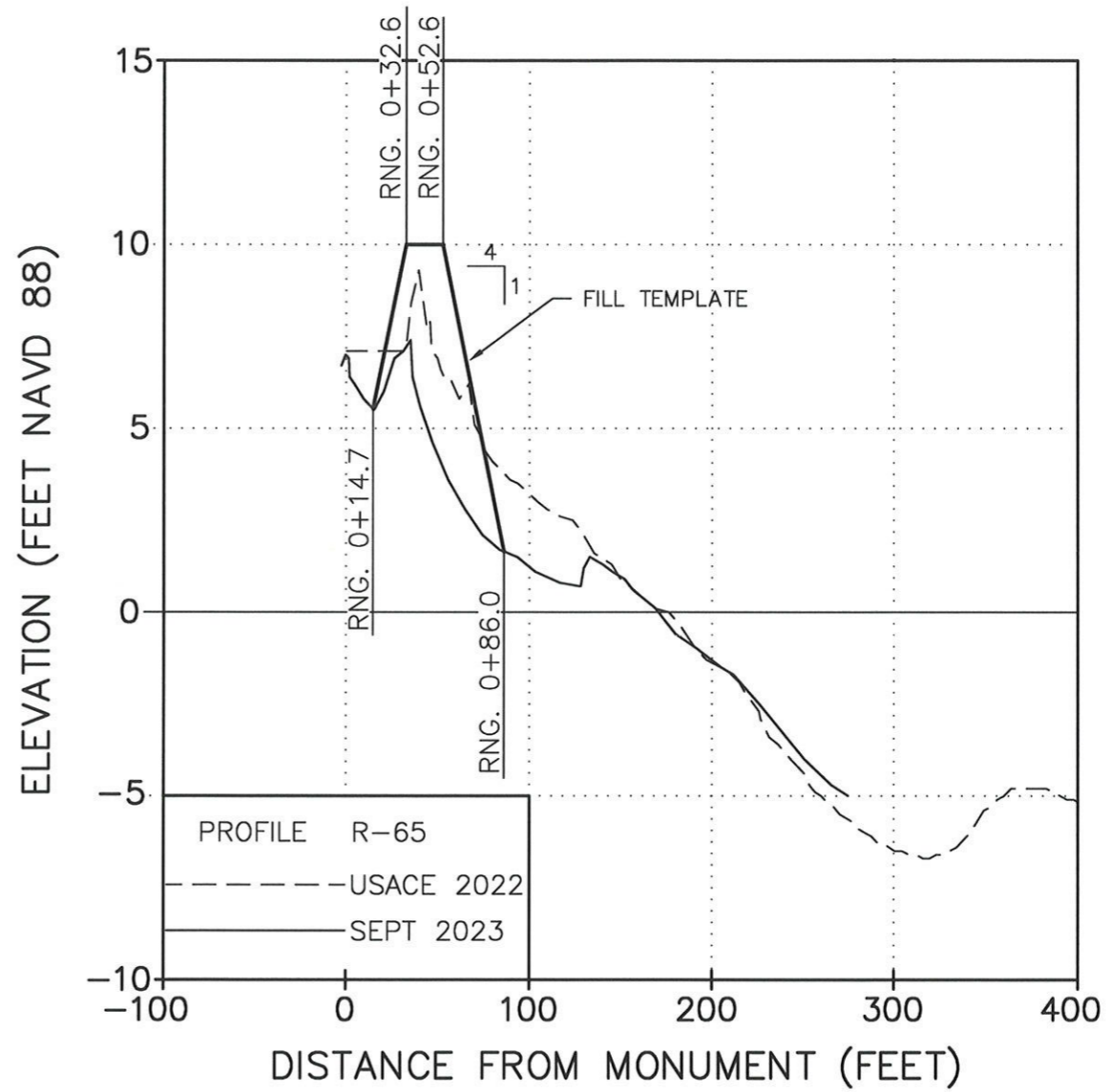
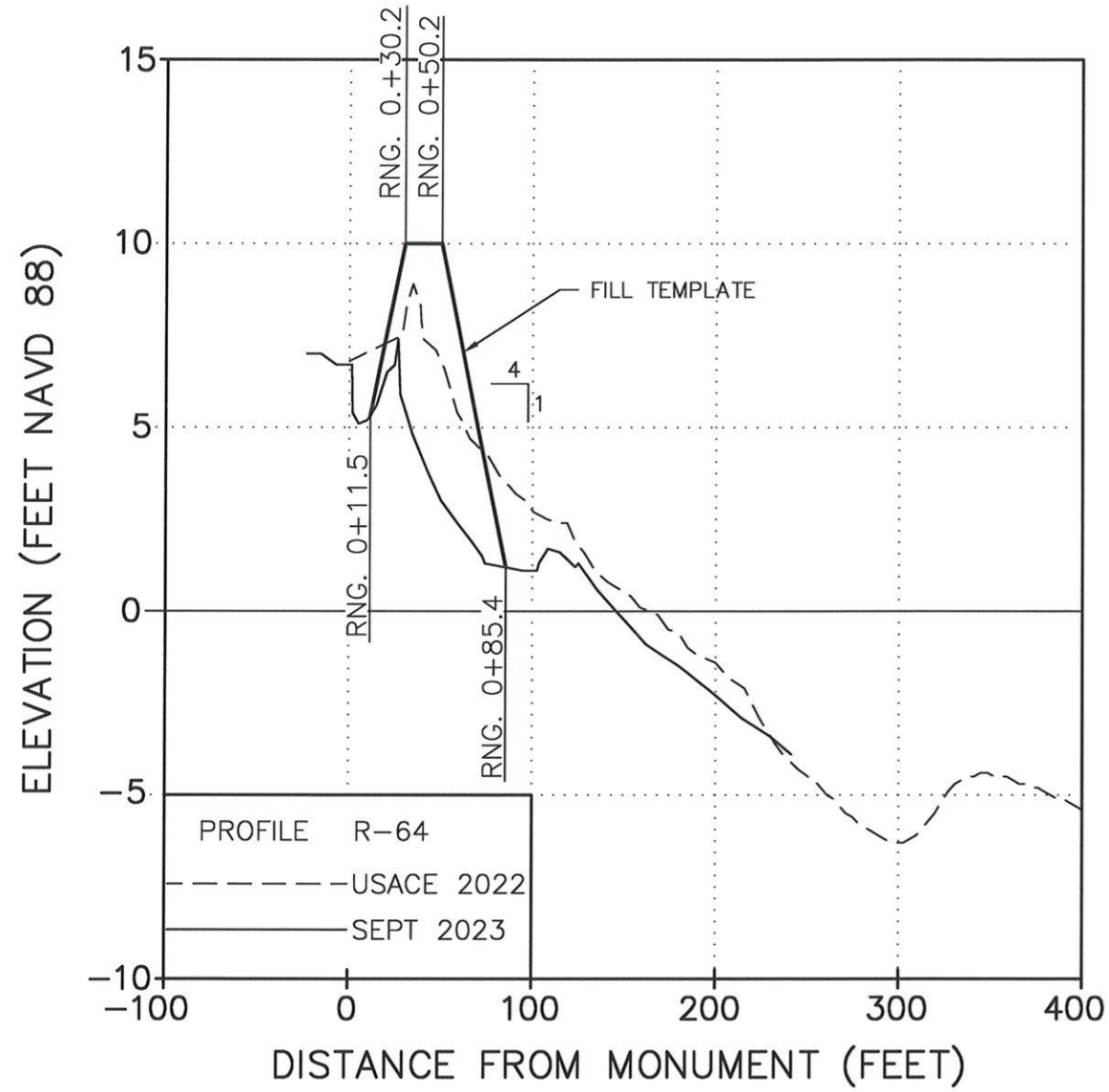
Aptim Environmental & Infrastructure, LLC
 6401 CONGRESS AVENUE, SUITE 140
 BOCA RATON, FLORIDA 33487
 www.aptim.com
 PH. (561) 391-8102
 FAX (561) 391-9116
 C.O.A. FL. #9317
 C.O.A. LA. #2531

REVISIONS	
No.	Description

BELLEAIR BEACH
 EMERGENCY REPAIR PROJECT
 PINELLAS COUNTY, FLORIDA
 CROSS SECTION

DRAWING NO.
XS-2
 SHEET 9 OF 11

P:\Projects\Belleair Beach\CAD\CONSTRUCTION\WELL\BACH-DASH-REPAIR-CORRECT-20 FT BACK FROM ORIGIN.dwg - Sep 20, 2023 @ 11:34am - Ben Ryan



CERTIFICATION:
 I, THE UNDERSIGNED, DO HEREBY CERTIFY THAT THESE PLANS ARE IN COMPLIANCE WITH THE APPLICABLE SECTIONS OF 62B-41, F.A.C.

NICOLE S. SHARP, P.E. No. 74708
 DATE: 9/30/23

Aptim Environmental & Infrastructure, LLC
 6401 CONGRESS AVENUE, SUITE 140
 BOCA RATON, FLORIDA 33487
 www.aptim.com
 PH. (561) 391-8102
 FAX (561) 391-9116
 C.O.A. FL. #9317
 C.O.A. LA. #2531

REVISIONS	
No.	Description

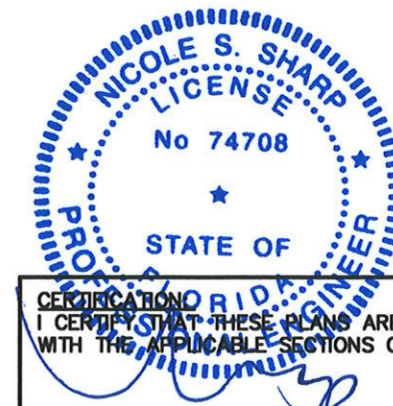
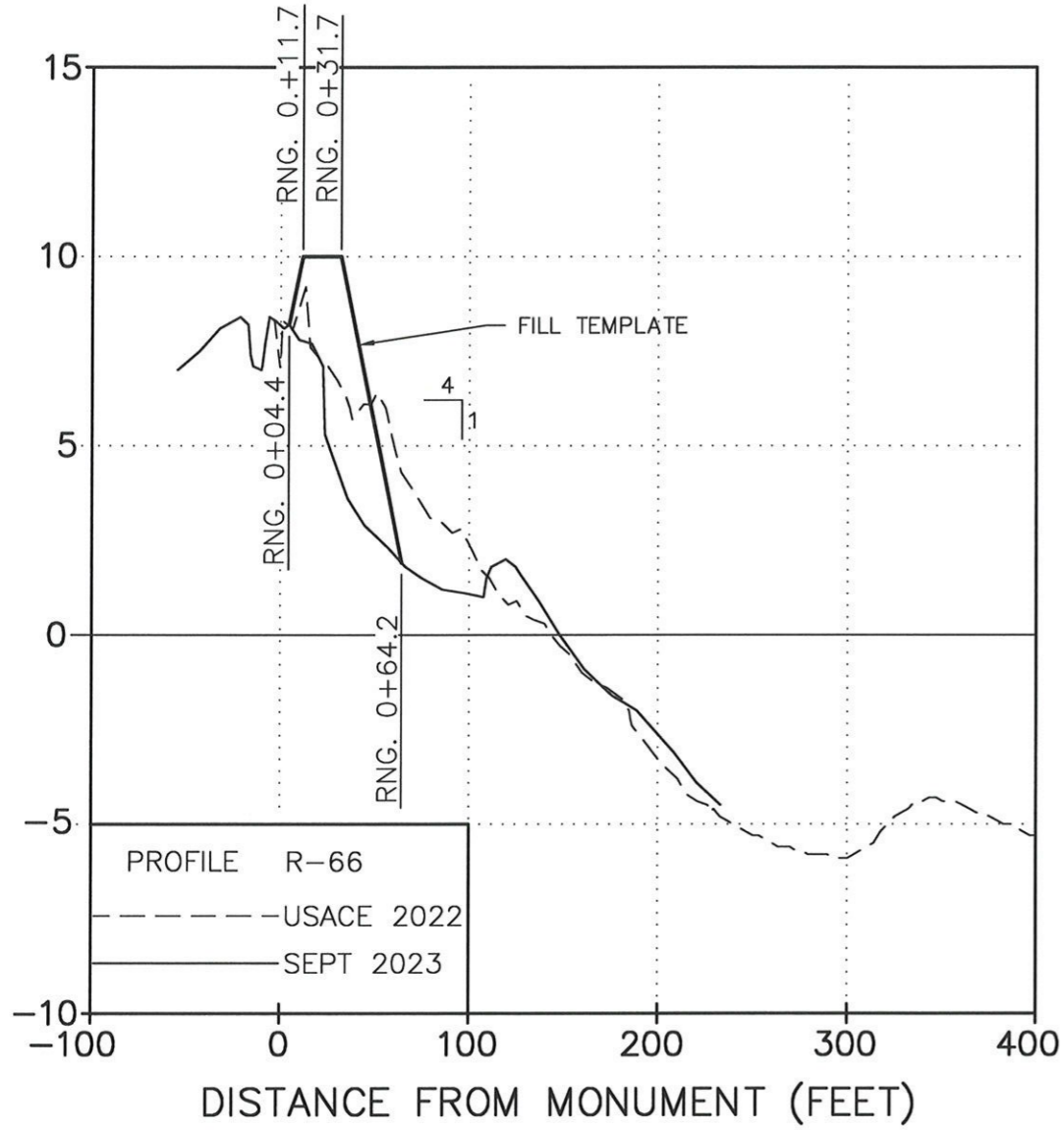
Reference File:	Designed by:	Checked by:
	NS	NS
	Drawn by:	Reviewed by:
	JEB	NS
	Date:	Submitted by:
	9/27/23	NS
	Plot Scale:	Comm. No.:
	AS NOTED	XXXXXXX

BELLEAIR BEACH
 EMERGENCY REPAIR PROJECT
 PINELLAS COUNTY, FLORIDA
 CROSS SECTION

DRAWING NO.
 XS-3
 SHEET 10 OF 11

P:\Projects\Belleair Beach\CAD\CONSTRUCTION\BELLEAIR BEACH-EMER-REPAIR-CONSTR-20 FT BACK FROM ORIGINAL.dwg - Sep 20, 2023 @ 11:34am - Ben Ryan

ELEVATION (FEET NAVD 88)



CERTIFICATION
 I CERTIFY THAT THESE PLANS ARE IN COMPLIANCE
 WITH THE APPLICABLE SECTIONS OF 62B-41, F.A.C.

 NICOLE S. SHARP P.E. NO. 74708

9/30/23
 DATE

REVISIONS	
No.	Description

Designed by:	NS	Checked by:	NS
Drawn by:	JEB	Reviewed by:	NS
Date:	9/27/23	Submitted by:	NS
Proj. Scale:	AS NOTED	Comm. No.:	XXXXXXX

BELLEAIR BEACH
 EMERGENCY REPAIR PROJECT
 PINELLAS COUNTY, FLORIDA
 CROSS SECTION

DRAWING NO.
 XS-4
 SHEET 11 OF 11

Aptim Environmental & Infrastructure, LLC
 6401 CONGRESS AVENUE, SUITE 140
 BOCA RATON, FLORIDA 33487
 www.aptim.com
 PH. (561) 391-8102
 FAX (561) 391-8116
 C.O.A. FL. #9317
 C.O.A. LA. #2531

P:\Vistas\Users\Brent\LOAD CONSTRUCTION\BELLEAIR BEACH-EMERGENCY REPAIR-CONST-20 FT BACK FROM ORIGINAL.dwg - Sep 29, 2023 @ 1:34pm - Brent Ryan