

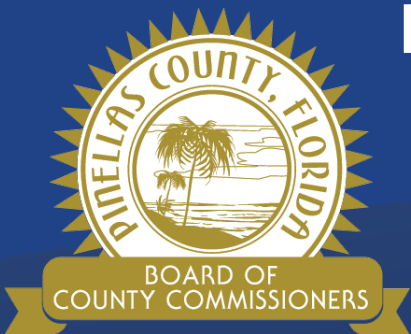
# Hazard Mitigation Grant Program (HMGP) – Helene and Milton



## Housing and Community Development and Public Works

Smita Ambadi, Principal Planner

Kelli Hammer Levy, Public Works Director



**Our Vision: To Be the Standard for Public Service in America**



# HMGP Background

## Federal Post-Disaster Mitigation Grant

- Available after a Presidential Disaster Declaration
- Reimbursement based
- 25% Local match requirement
- Allocation must be shared among eligible entities

## Types of eligible projects

- Flood risk reduction
- Hardening (buildings and infrastructure)
- Wind retrofit
- Generators for critical facilities



## Local Mitigation Strategy (LMS) Plan

- Countywide multijurisdictional hazard mitigation plan.
- Required for eligibility to apply for HMGP grants
- Each participating municipality has to adopt the LMS Plan
- HMGP projects need to be on the approved LMS Plan

*Section 322 of the Robert T. Stafford Disaster Relief and Emergency Assistance Act (Stafford Act) enacted under the Disaster Mitigation Act of 2000*

## LMS Working Group

- Broad membership – local governments, private non-profits (e.g., hospitals), special districts and regional partners
- Approves the prioritized HMGP project list
- Develops and updates the LMS Plan
- Develops and provide to the State, a prioritized list of projects for HMGP grants

*Pursuant to Rule 27P-22, Florida Administrative Code, all project applications must go through the LMS Working Group (LMSWG) of the county where the project will take place.*

# HMGP Process



- **State** – releases Notice of Funding Availability; announces allocations per County
- **Each eligible entity** – submits individual applications and is responsible for administering the project once approved
- **Local Mitigation Strategy (LMS) Working Group** – reviews project descriptions and prepares a ranked Prioritized Project List based on specific criteria
- **State** – reviews project eligibility; makes recommendations to FEMA
- **Project Completion** – generally 48 months from application submission to FEMA
- **Project Funding** – based on priority outlined in the Prioritized Project List

# HMGP Tier I and Tier II Allocation



## Tier I

- Initial allocation to counties listed on the relevant disaster declaration
- Eligible projects are funded in the order of priority until allocation is exhausted

---

## Tier II

- Reallocation of any unused funds from Tier I to those counties on the relevant disaster declaration
- If funding available in Tier II, eligible projects are funded in the order of priority

# HMGP Allocations – Helene & Milton



## **Pinellas County Tier I – \$233 million\* combined allocation**

- \$146 million Helene
- \$87 million Milton

## **Allocation must be shared among eligible entities**

- Pinellas County
- Municipalities
- Private non-profits (e.g., hospitals and universities)
- Special districts (e.g., fire districts)

## **Application deadline: July 25, 2025**

*\*Total allocation is based on 6-month estimates*

## HMGP Helene - Total Allocation \$146 Million\*

HELENE	COUNTYWIDE	UNINCORPORATED PINELLAS	
Number of projects	45 projects	5 projects	Two Public Works; Three Utilities
Total requested	\$206 million	\$41 million	
Total local match required	\$70 million	\$13.9 million	3 Hardening projects 1 Stormwater 1 Safe Room

*\*Total allocation is based on 6-month estimates*



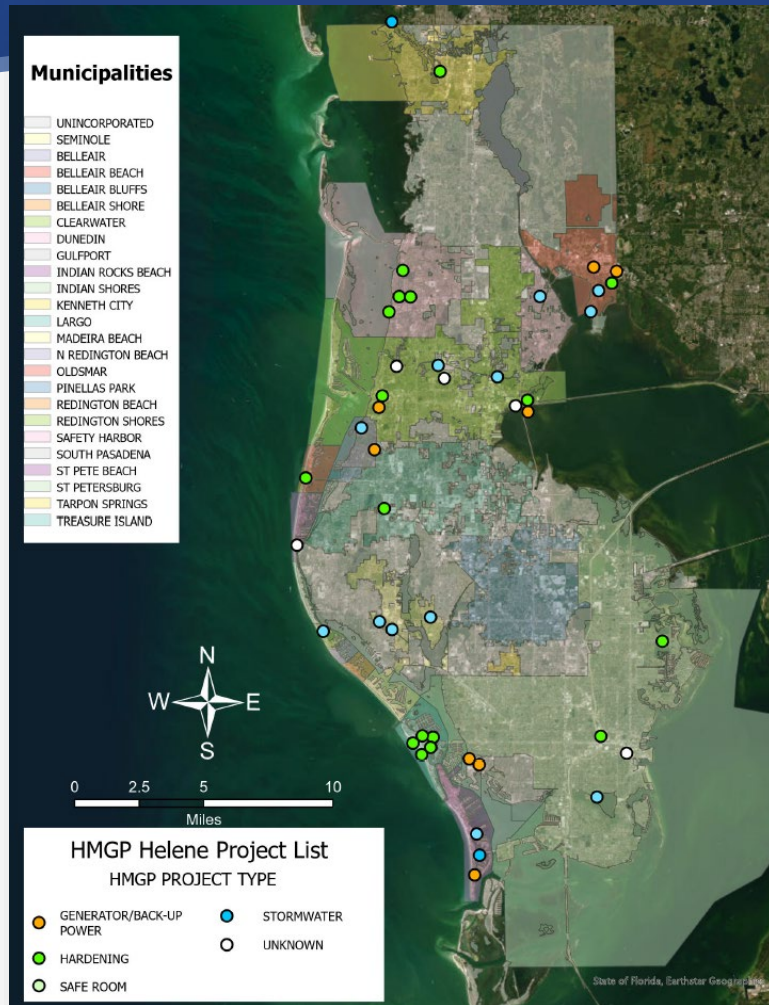
## HMGP Milton - Total Allocation \$87 Million\*

HELENE	COUNTYWIDE	UNINCORPORATED PINELLAS	
Number of projects	26 projects	6 projects	Two Public Works; Four Utilities
Total requested	\$208 million	\$39.9 million	
Total local match required	\$71 million	\$13.3 million	3 Hardening projects 2 Stormwater 1 Generator

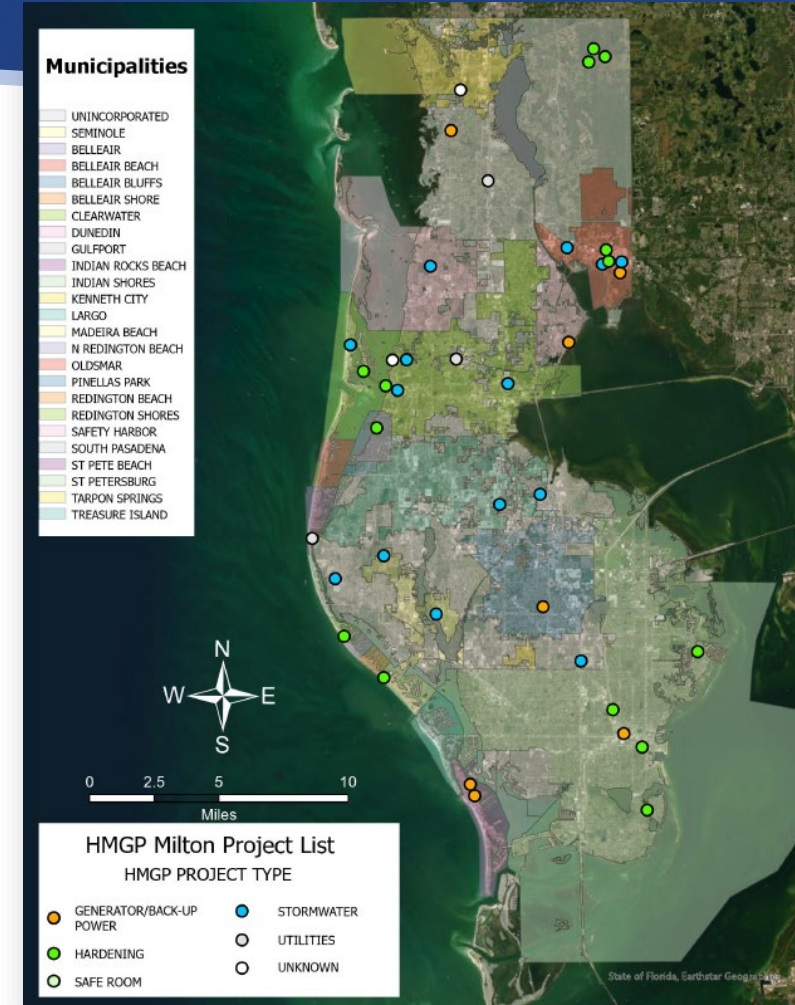
*\*Total allocation is based on 6-month estimates.*



# HMGP Countywide Project Impact



**Helene: 45 Projects Total Request: \$206 M**



**Milton: 26 Projects Total Request: \$208 M**

# HMGP Projects – Pinellas County



## HMGP Helene

	PROJECTS	DEPARTMENT
1	Cross Bayou Phase 1	PUBLIC WORKS
2	Signal Modifications on The Barrier Islands	PUBLIC WORKS
3	Hardening and Improvements of Logan Laboratories Building	UTILITIES
4	Hardening of Logan Utilities Operations Center Building (Safe Room)	UTILITIES
5	Sanitary Sewer Pump Station Electrical Improvements	UTILITIES

## HMGP Milton

	PROJECTS	DEPARTMENT
1	Baypointe Stormwater Conservation Area	PUBLIC WORKS
2	34th St Box Culvert	PUBLIC WORKS
3	North Booster Station Rehab and Hardening	UTILITIES
4	Keller Regional Treatment Facility Hardening and Improvements	UTILITIES
5	William E. Dunn Advanced Water Reclamation Facility Backup Power and Pumping Enhancements	UTILITIES
6	W.E. Dunn Water Reclamation Facility Operations Building Roof Replacement	UTILITIES

# LMS Working Group Next Steps



- LMS Working Group Meeting on July 16<sup>th</sup> to discuss the final draft of the Prioritized Projects List for HMGP Helene and HMGP Milton
- LMS Working Group Meeting on July 21st to finalize the countywide Prioritized Project Lists from all applicants.
- Applicants submit application by the State's deadline – July 25th



# Questions