

APPENDIX 6

Work Plan Descriptions

Work Plan #1

- Work Plan #1 consists of the cleaning and CIPP Lining of 8" and 27" sewer mains.
- The work plan is located along 49th Avenue between 37th Street and 40th Street.
- The 27" sewer mains are located in the roadway of 49th Avenue and will likely require full roadway closure between 37th St. and 40th St. to facilitate work. Local roadway traffic access will be required to be maintained for local residents.
- The 8" sewer main is an aerial crossing Joe's Creek west of the CSX railroad tracks.
- The bypass system for the 27" CIPP lining will likely need to cross under the CSX tracks. The awarded contractor will be required to obtain CSX Permit approval. Information regarding this permit application is contained in the appendices.
- The bypass system for the 8" CIPP lining can occur over the existing pedestrian bridge located in Joe's Creek Greenway Park. This bypass has been conceptually approved by the Pinellas County Parks and Conservation Resources Department (PCR). Additional coordination will be required with County PCR regarding bridge closure and public notification at time of bypass plan review.
- All sewer service must be maintained for all customers during the work. All sewer collectors must remain in service and be included as part of the bypass plan
- In 2015 the existing 27" sewer main directly east of manhole 15KN-SM2513 collapsed causing a depression in the roadway. Significant amounts of sediment has entered the sewer mains because of that break. That sediment may be located now within this stretch of sewer, or may have migrated downstream within the system.

Work Plan #2

- Work Plan #2 consists of cleaning and CIPP lining of 8" and 30" sewer mains.
- The work plan is located south of the intersection of 62nd Street and 43rd Avenue.
- The 30" sewer main passes under the roadway and bridge of 62nd Avenue crossing of Joe's Creek.
- The bypass system for the 8" and 30" will be allowed to cross over 62nd Street. Roadway closure of 62nd Avenue will be allowed between 43rd Avenue and 42nd Avenue. Roadway closure required for the by-pass shall be restricted to less than 5 consecutive calendar days. Local roadway traffic access will be required to be maintained for local residents.

- All sewer service must be maintained for all customers during the work. All sewer collectors must remain in service and be included as part of the bypass plan

Work Plan #3

- Work Plan #3 consists of cleaning and CIPP lining of 8", 12" and 30" sewer mains.
- The work plan is located south of the 54th Avenue at the Joe's Creek bridge and continues to the east along the bank of Joe's Creek to west of the 66th Street crossing of Joe's Creek.
- The progression of the cleaning of the sewer lines shall be from the easterly upstream pipe segments towards the westerly downstream pipe segments.
- The 8" sewer main is an aerial crossing of Joe's Creek. It is suggested that the bypass for this CIPP lining be directed along the southern bank of Joe's Creek to manhole 15HS-SM4507. This bypass will need approval of Pinellas County Utility Operations to ensure the westerly gravity system has adequate capacity to accept bypass volume.
- The 30" sewer main crosses under the 71st Street bridge. The bypass system for the 30" will be allowed to cross overland across the bridge. Roadway closure of 71nd Street will be allowed between 46rd Avenue and Tyler Circle North. Roadway closure required for the by-pass shall be restricted to less than 5 consecutive calendar days. Local roadway traffic access will be required to be maintained for local residents.
- The 30" sewer main crosses under the 46th Avenue bridge. The bypass system for the 30" will be required to pass under the bridge. Two-way traffic flow over the bridge will be required to be maintained.
- The 12" sewer main is an aerial crossing of Joe's Creek. It is suggested that the bypass be routed over the bridge in the pedestrian area or in the emergency shoulder area and manifold into the 30" bypass under the bridge.
- All sewer service must be maintained for all customers during the work. All sewer collectors must remain in service and be included as part of the bypass plan

Work Plan #4

- Work Plan #4 consists of cleaning and CIPP lining of 30" sewer mains.
- The work plan is located at the intersection of 66th Avenue and 99th Way and continues north to south of Park Blvd.
- There are segments of the pipe system that are located within sewer easements within private property. Coordination with the private property owners will be required.

- The bypass of the 30" sewer main of 17ES-SM4507-17ES-SM4517 will require bypass piping to cross the Home Depot entrance road. This crossing will be required to be under the driveway by excavating and replacing the pavement. The cost of the bypass for this Work Plan will include the excavation of the driveway crossing, temporary pavement for the crossing, and restoration of the roadway base/asphalt/stripping after the bypass is removed.
- The bypass of the 30" sewer main of 16EN-SM2757-16EN-SM2256 will require bypass piping to cross the Long Bayou Condominiums entrance road. This crossing will be required to be under the roadway by excavating and replacing the pavement. The cost of the bypass for this Work Plan will include the excavation of the driveway crossing, temporary pavement for the crossing, and restoration of the roadway base/asphalt/stripping after the bypass is removed.
- Work Plan #4 has sewer segments that are located in parcel owned by the City of Seminole (segments 17ES-SM4506 to 17ES-SM4517). A temporary construction easement will be required to be obtained by the contractor from the City of Seminole.

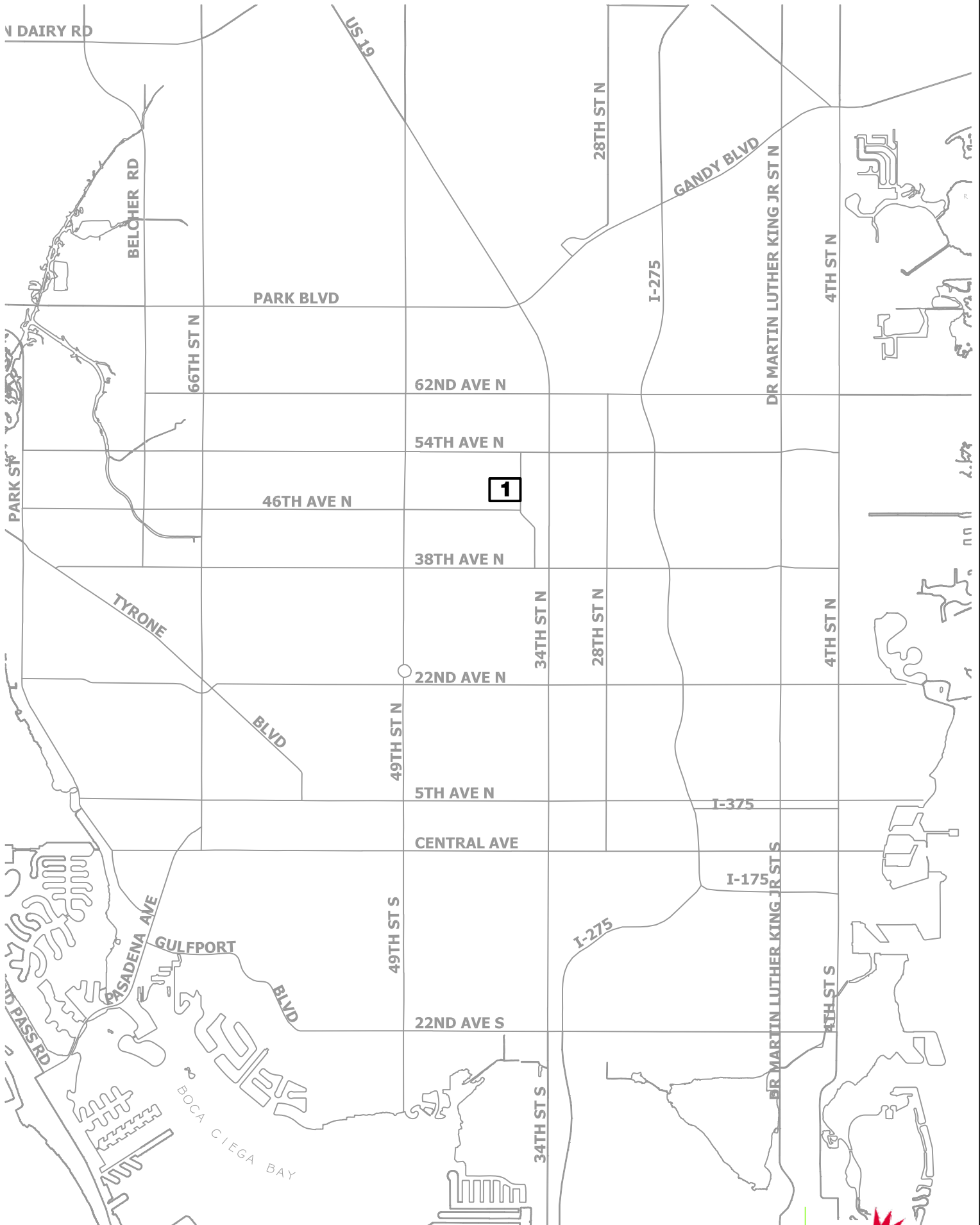
Work Plan #5-A

- Work Plan #5 consists of the cleaning and videoing of 10", 27" and 36" sewer mains.
- The work plan is located in Joe's Creek Greenway Park.
- The work within the park has been conceptually approved by Pinellas County Parks and Conservation Resources Department (PCR). Coordination with PCR will be required prior to and during work.
- Work Plan #5-A is to clean and video the pipes. Pipe condition assessment will be made by Pinellas County Utility Engineering to determine if CIPP Lining is required.

Work Plan #5-B (if Required)

- Work Plan #5 consists of the re-cleaning and CIPP lining of 10", 27" and 36" sewer mains.
- The work plan is located in Joe's Creek Greenway Park.
- Based on the pipe condition assessment, the work will commence to CIPP line the pipe segments.
- The 10" sewer main is an aerial crossing of Joe's Creek. The bypass system for the 10" CIPP lining can occur over the existing pedestrian bridge located in Joe's Creek Greenway Park. This bypass has been conceptually approved by the Pinellas County Parks and Conservation Resources Department (PCR). Additional coordination will be required with County PCR regarding bridge closure and public notification at time of

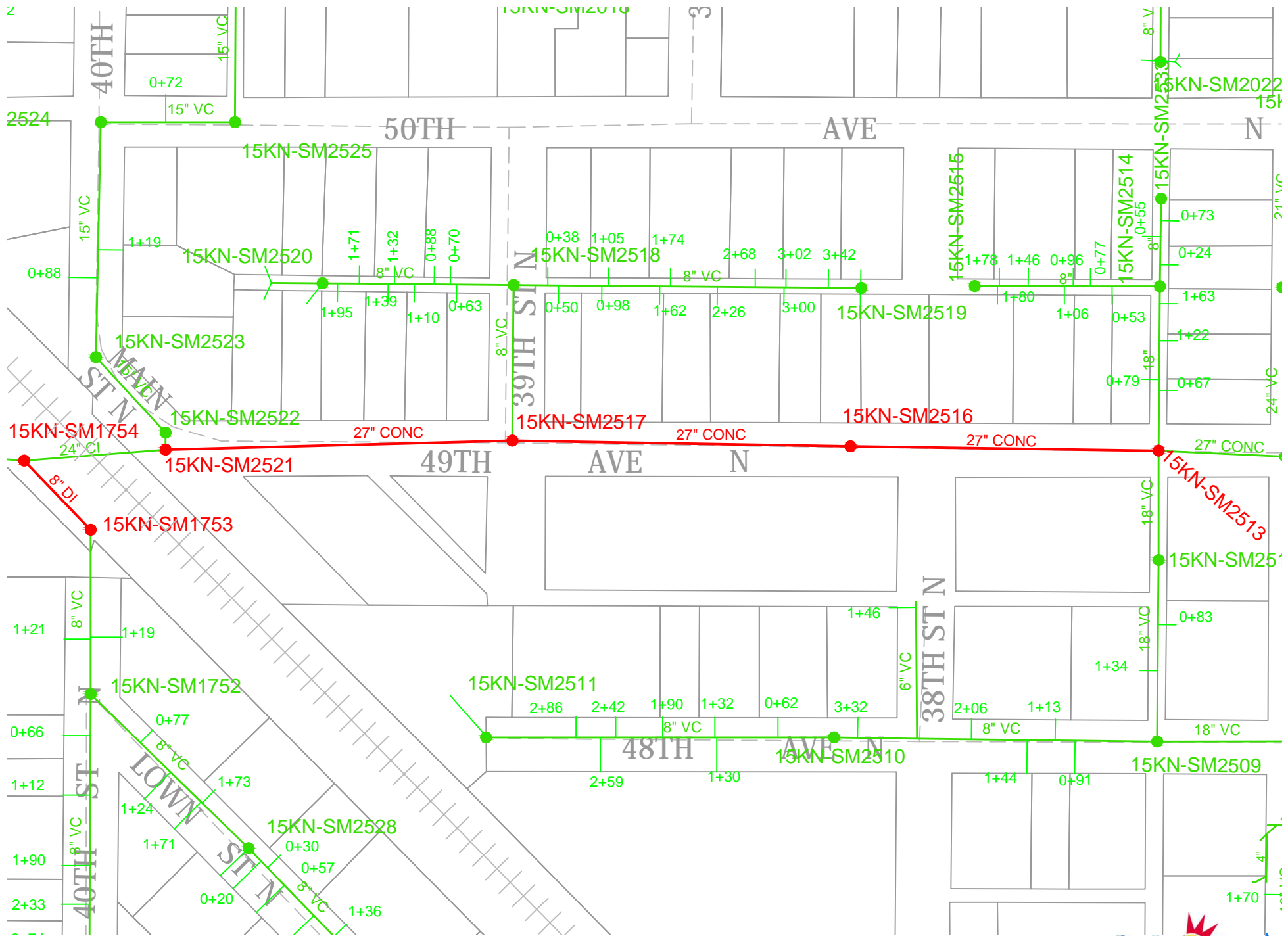
bypass plan review. Alternatively, the bypass can be aligned to the west along the south side of Joe's Creek to the gravity system at 46th Street south.



S:\Staff\PieniakE\PipeLining_Misc\20150922_Interceptor\WP1\CIPP002747A_FY15_R001.dwg

CIPP LINING 002747A WORK PLAN 1 INDEX





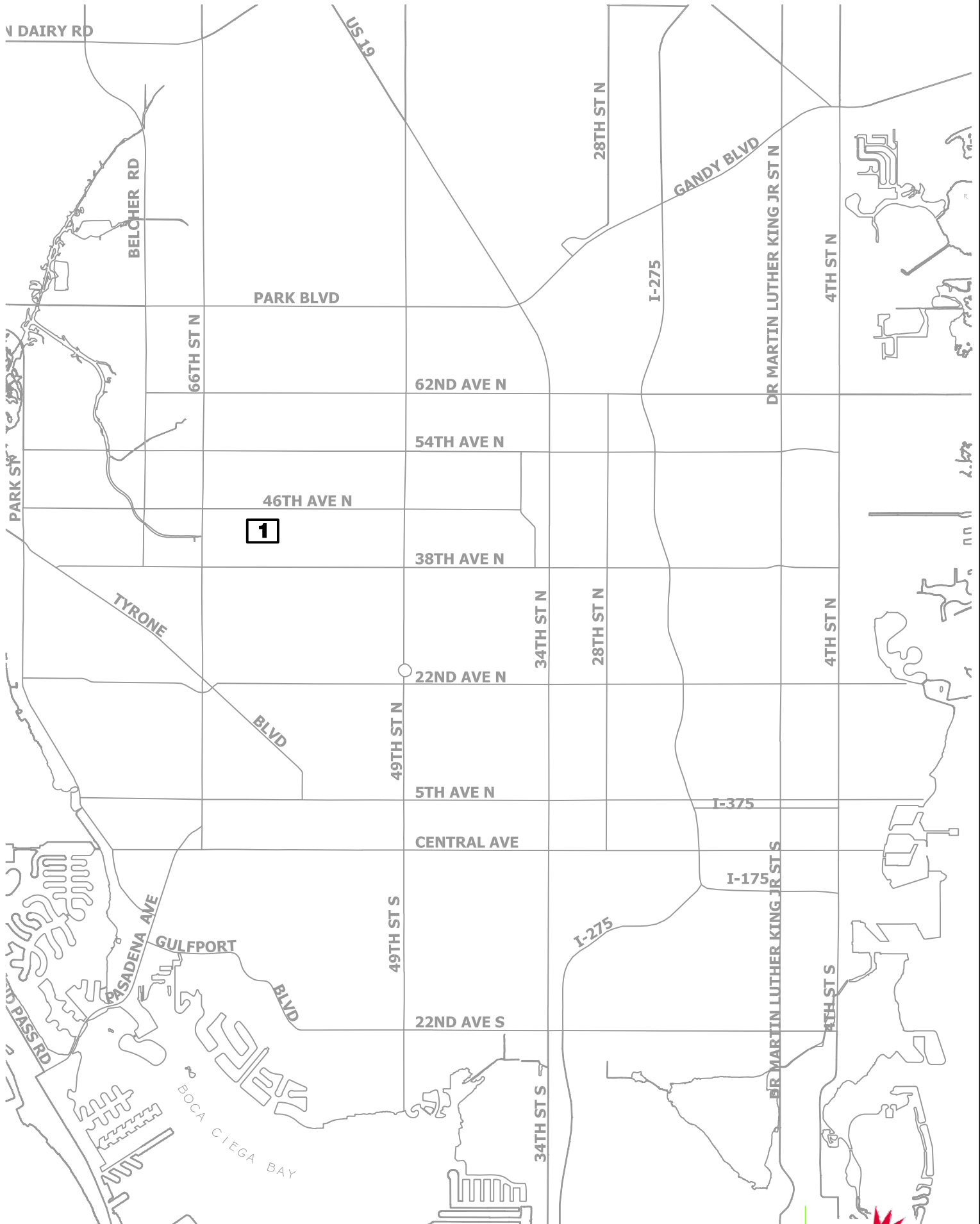
S:\Staff\PreniakE\PipeLining_Misc\20150922_Interceptor\WP1\CIPP002747A_FY15_R001.dwg

CIPP LINING 002747A - WORK PLAN 1

MAP 1

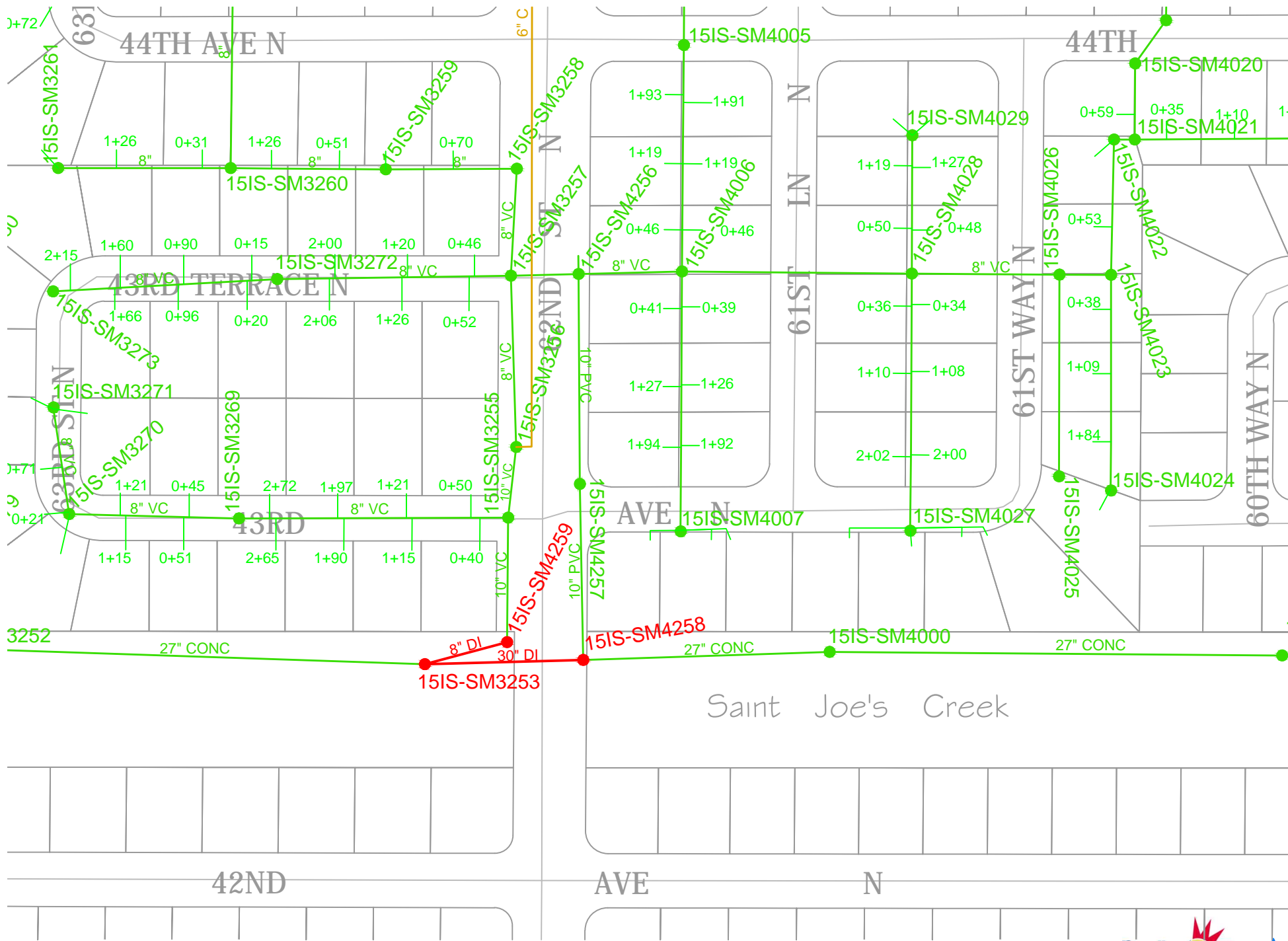


S:\Staff\PieniakE\PipeLining_Misc\20150922_Interceptor\WP2\CIPP002747A_FY15_R002.dwg



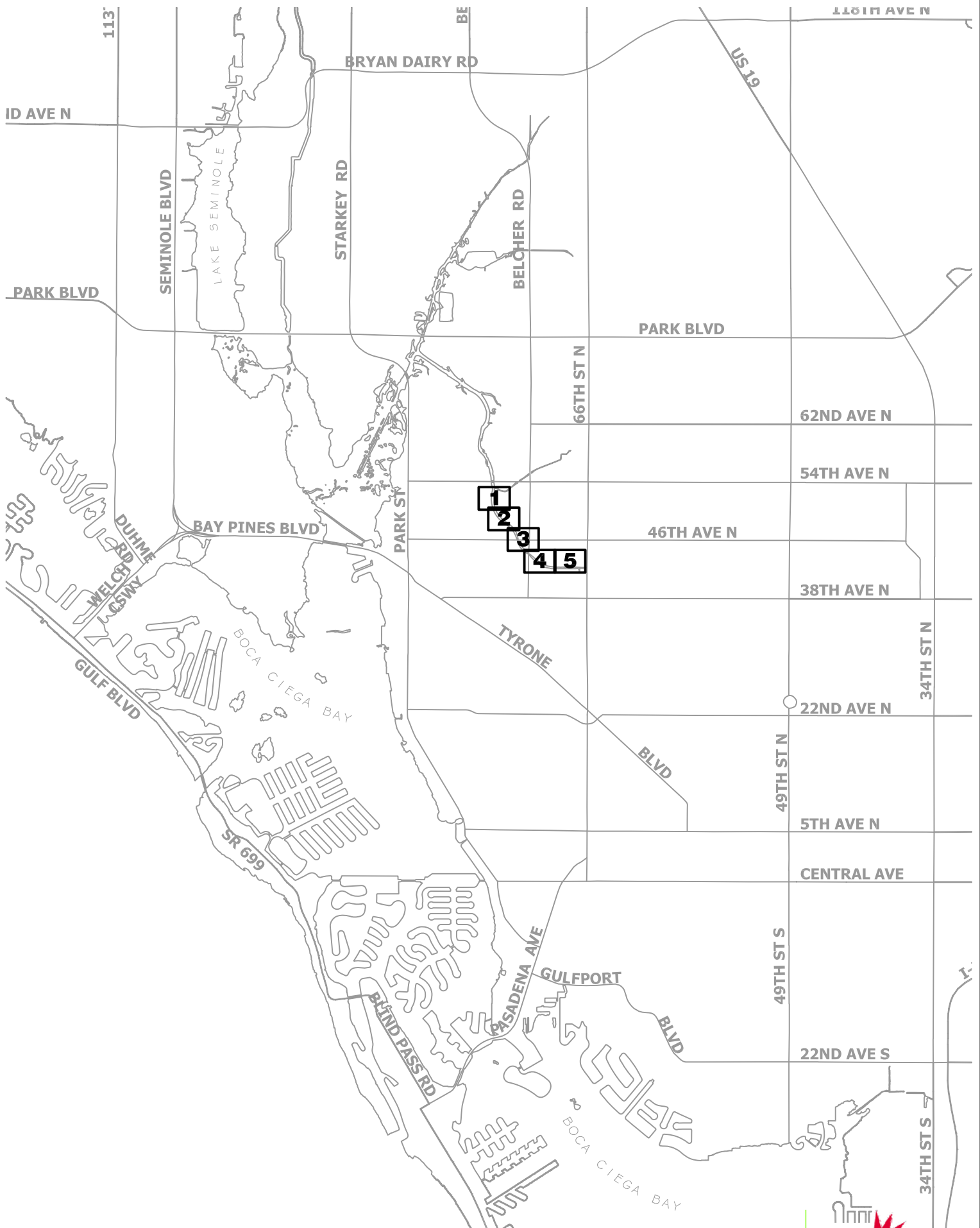
CIPP LINING 002747A WORK PLAN 2 INDEX





S:\Staff\PreniakE\PipeLining_Misc\20150922_Interceptor\WP2\CIPP002747A_FY15_R002.dwg





S:\Staff\PieniakE\PipeLining_Misc\20150922_Interceptor\WP3\CIPP002747A_R003.dwg

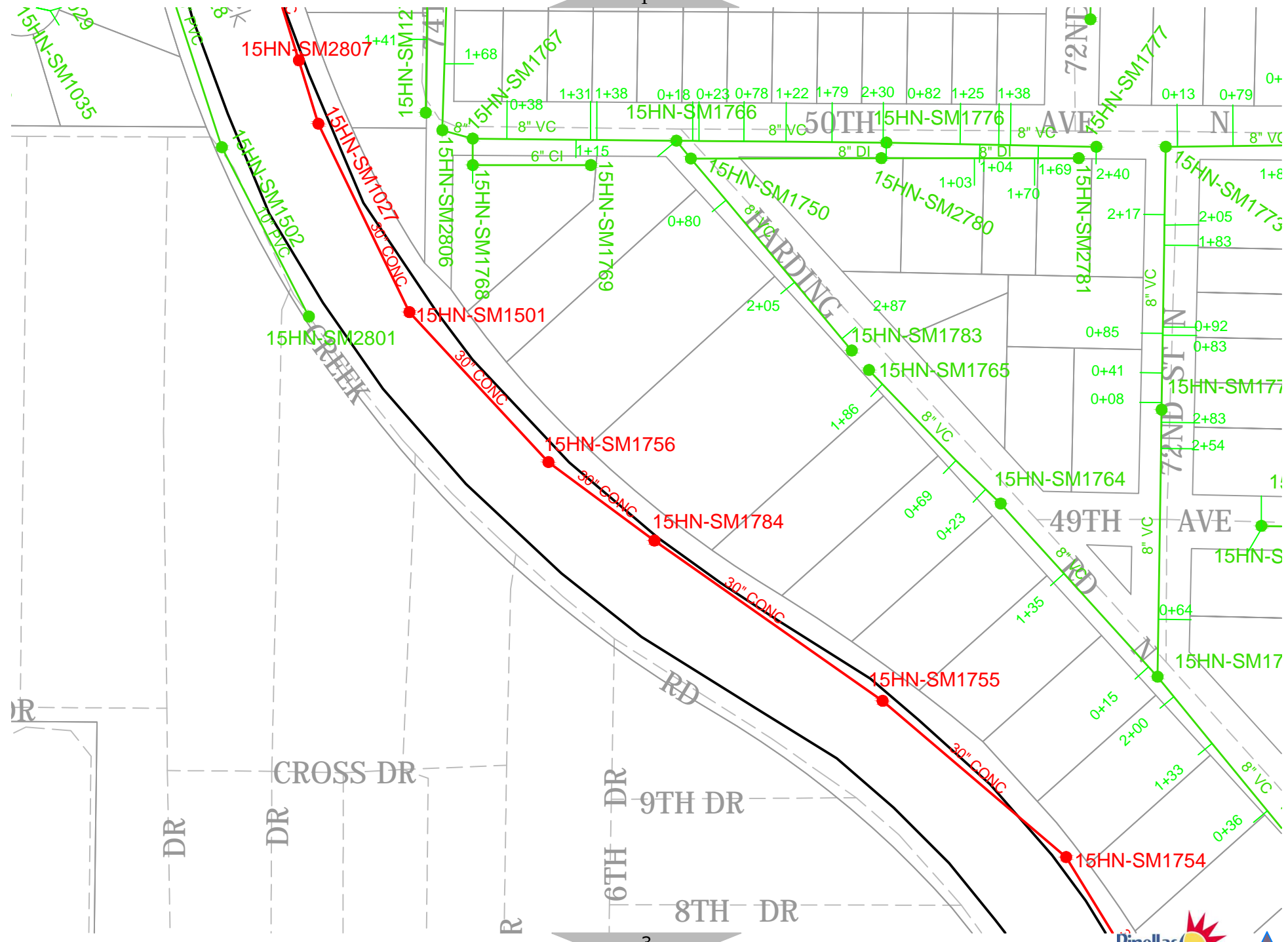
CIPP LINING 002747A WORK PLAN 3 INDEX



1

3

S:\Staff\PreniakE\PipeLining_Misc\20150922_Interceptor\WP-3\CIPP002747A_R003.dwg



CIPP LINING 002747A - WORK PLAN 3

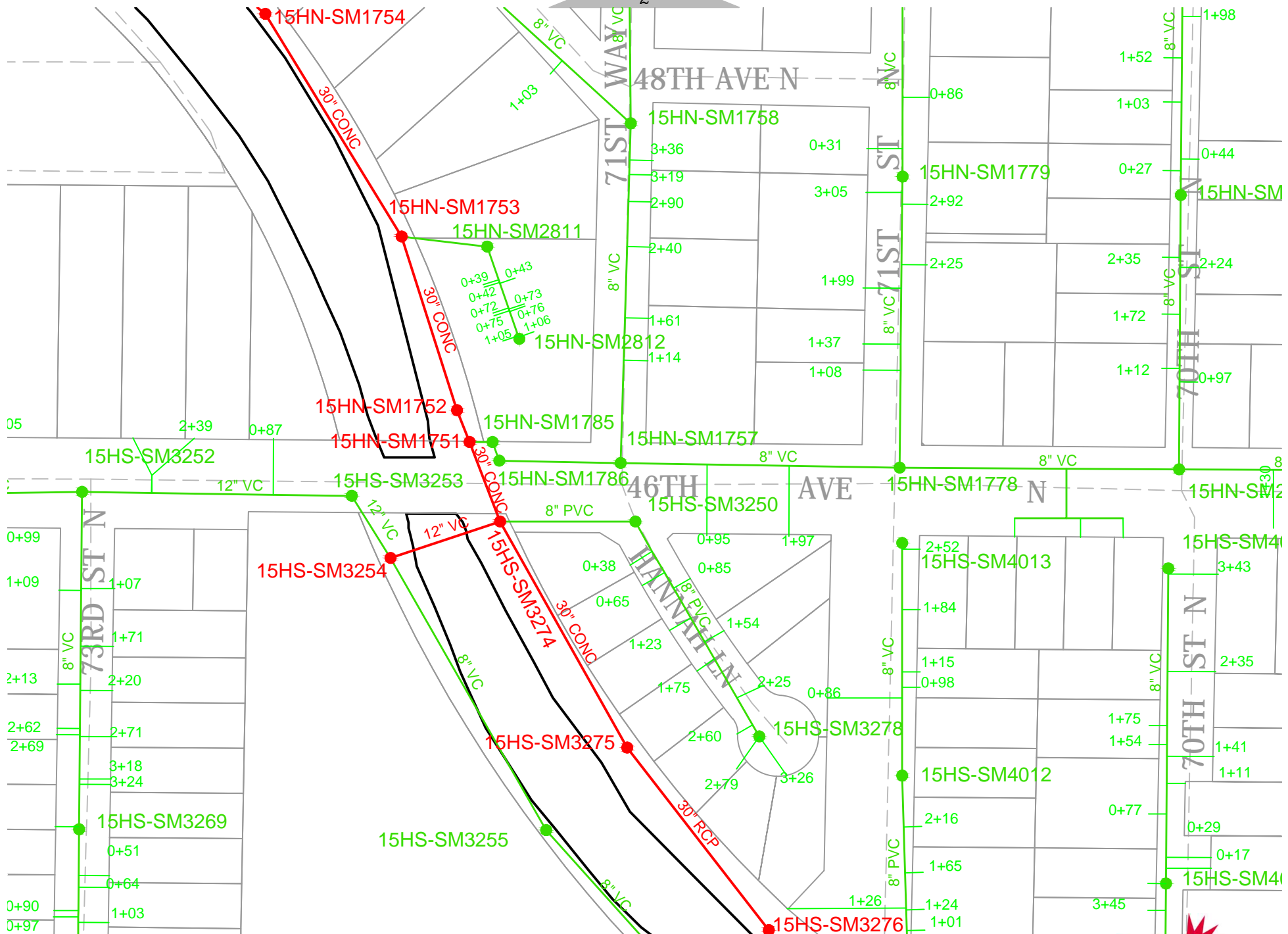
MAP 2



2

4

S:\Start\PreniakE\PipeLining_Misc\20150922_Interceptor\WP\3\CIPP\002747A_R003.dwg

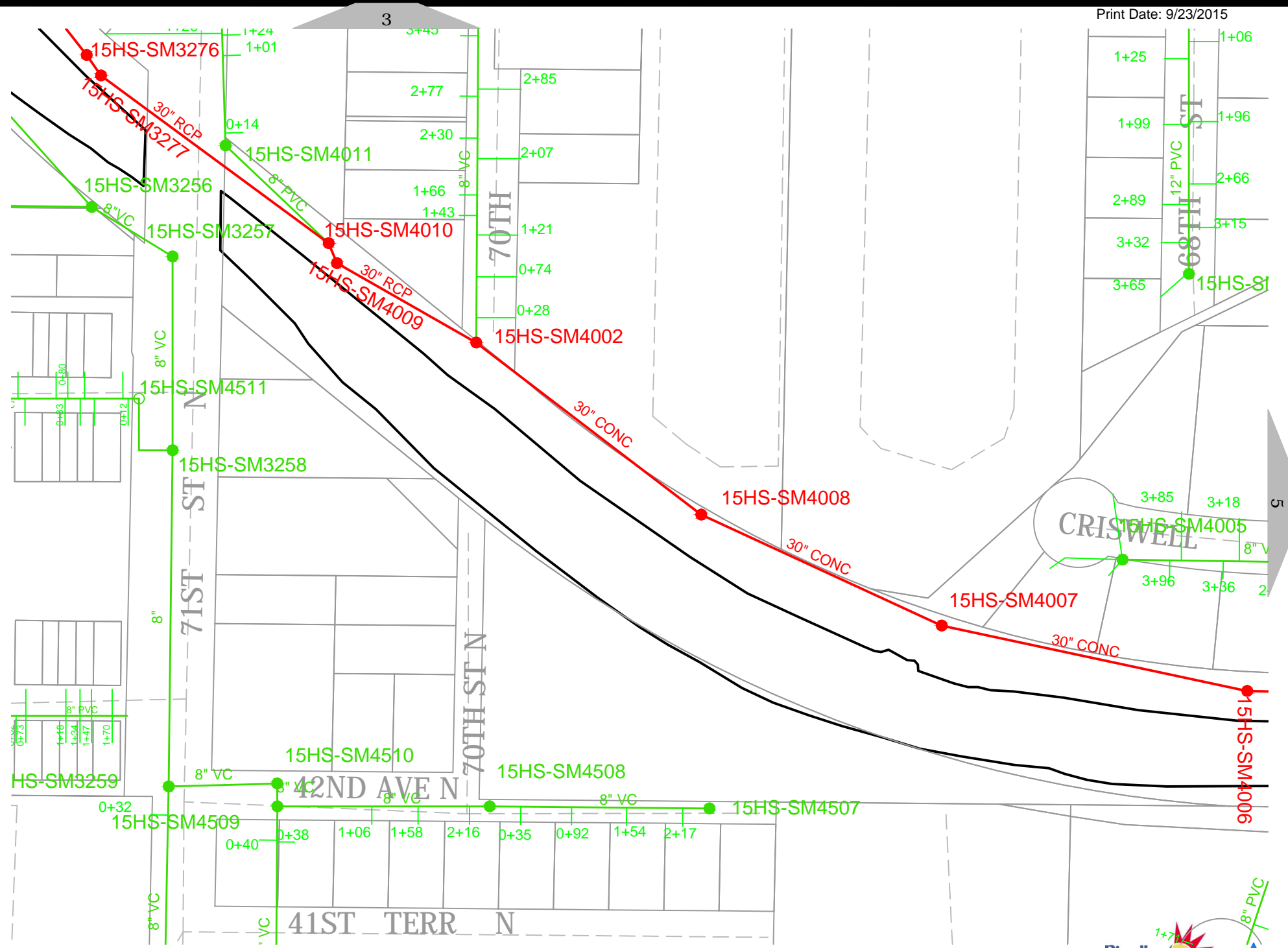


CIPP LINING 002747A - WORK PLAN 3

MAP 3

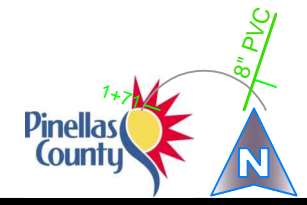


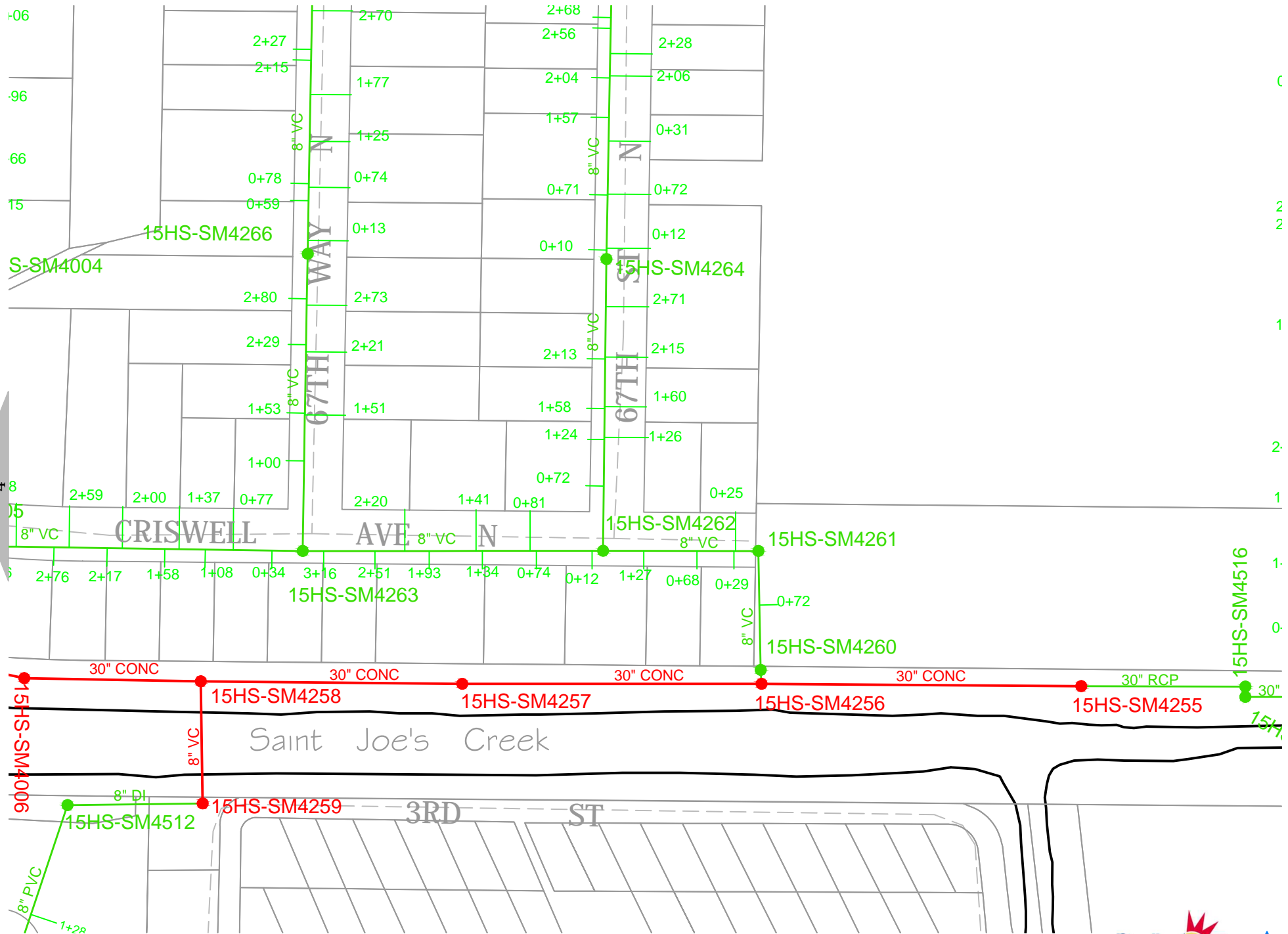
S:\Staff\PreniakE\PipeLining_Misc\20150922_Interceptor\WP\3\CIPP\002747A_R003.dwg



CIPP LINING 002747A - WORK PLAN 3

MAP 4





S:\Staff\PrelnakE\PipeLining_Misc\20150922_Interceptor\WP\3\CIPP002747A_R003.dwg

CIPP LINING 002747A - WORK PLAN 3

MAP 5

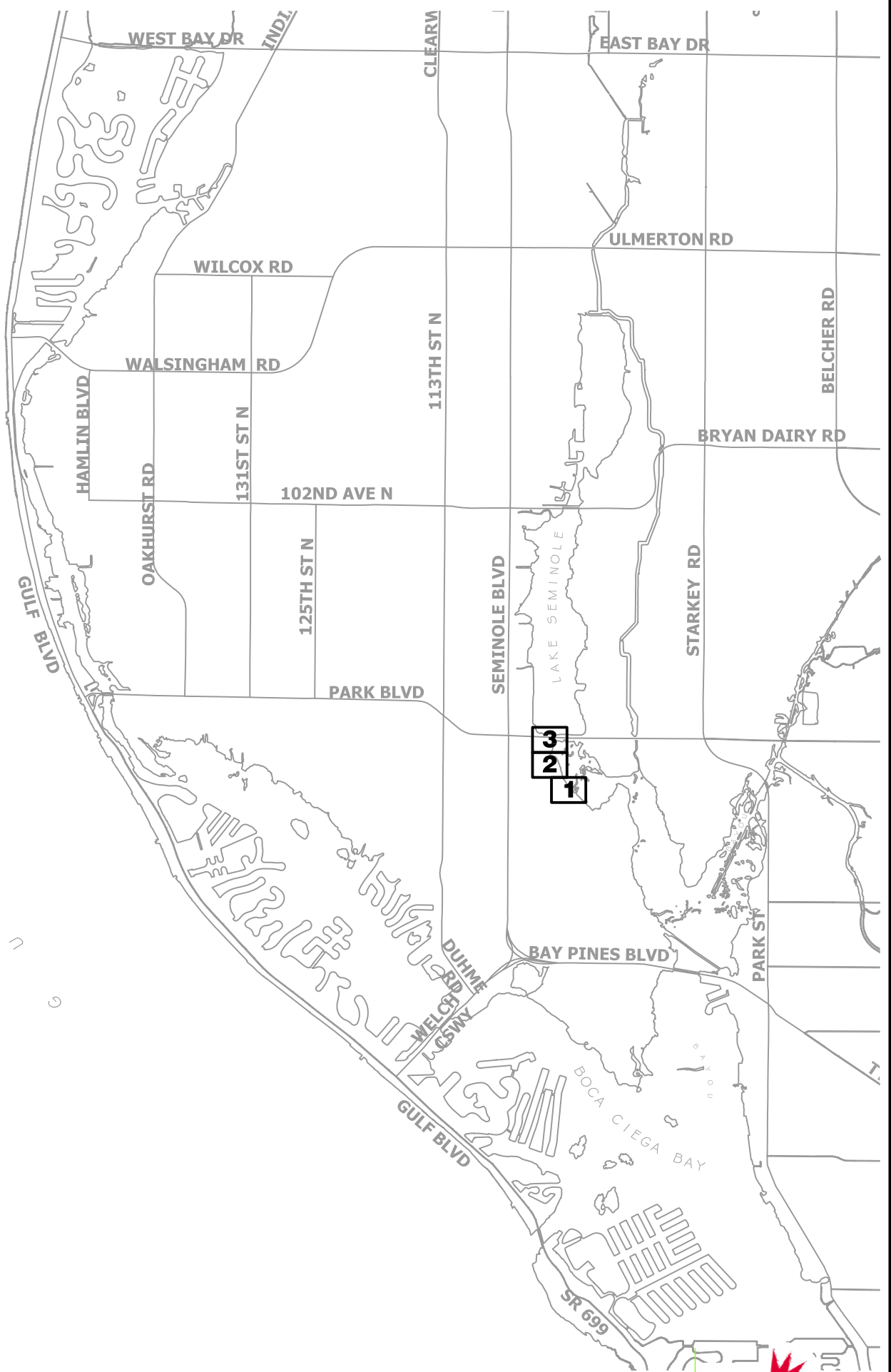


S:\Staff\PieniakE\PipeLining_Misc\20150922_Interceptor\WP4 A Redo_OFPrevious\WO\CIP\002747A_WP4.dwg

M
E
X
I
C
O

F
O

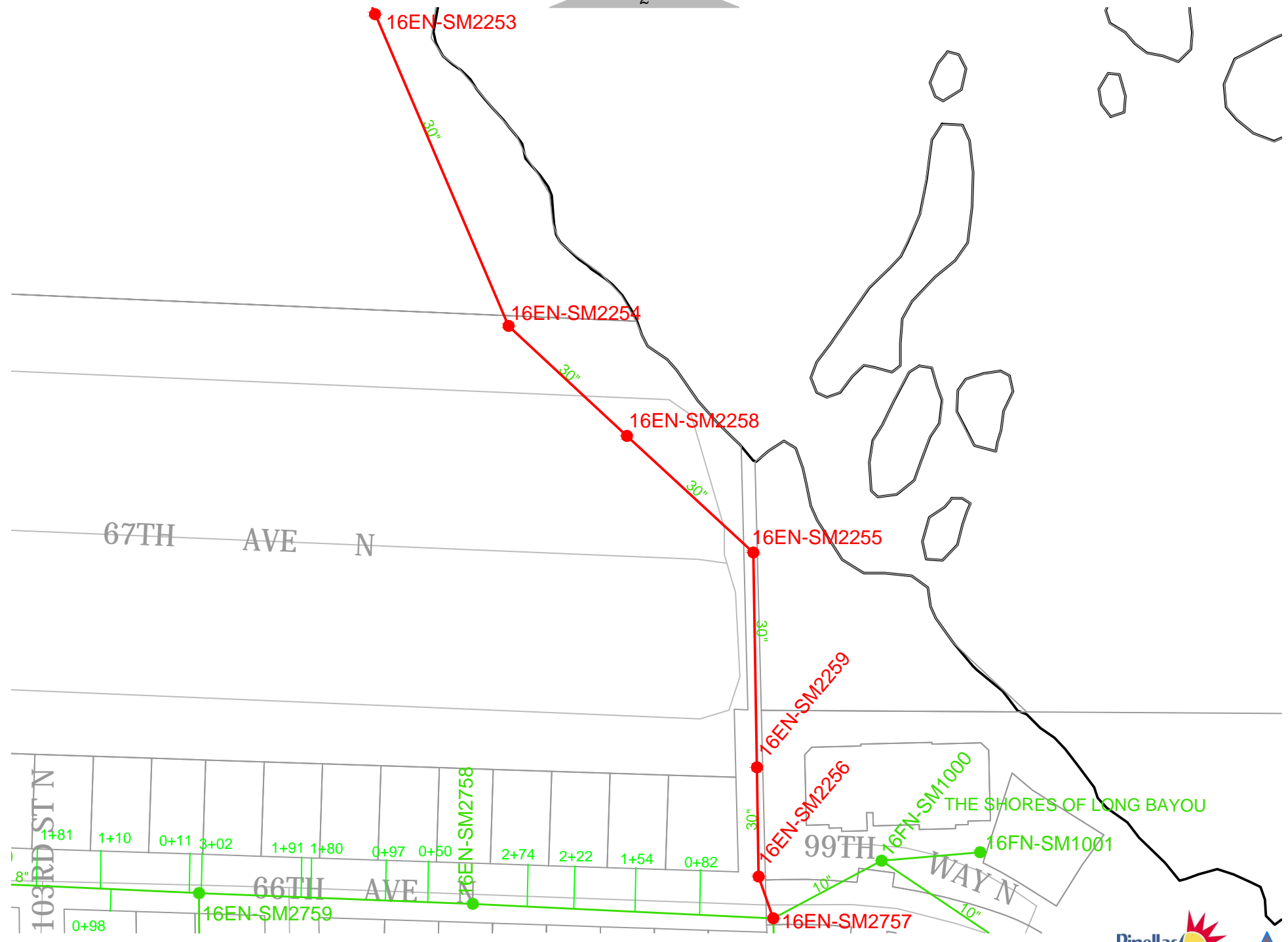
F
L



CIPP LINING 002747A - WORK PLAN 4 INDEX



S:\Staff\PenakE\PipeLining_Misc\20150922_Interceptor\WP4_A_Redo_OfPrevious\WO\CIP\002747A_WP4.dwg

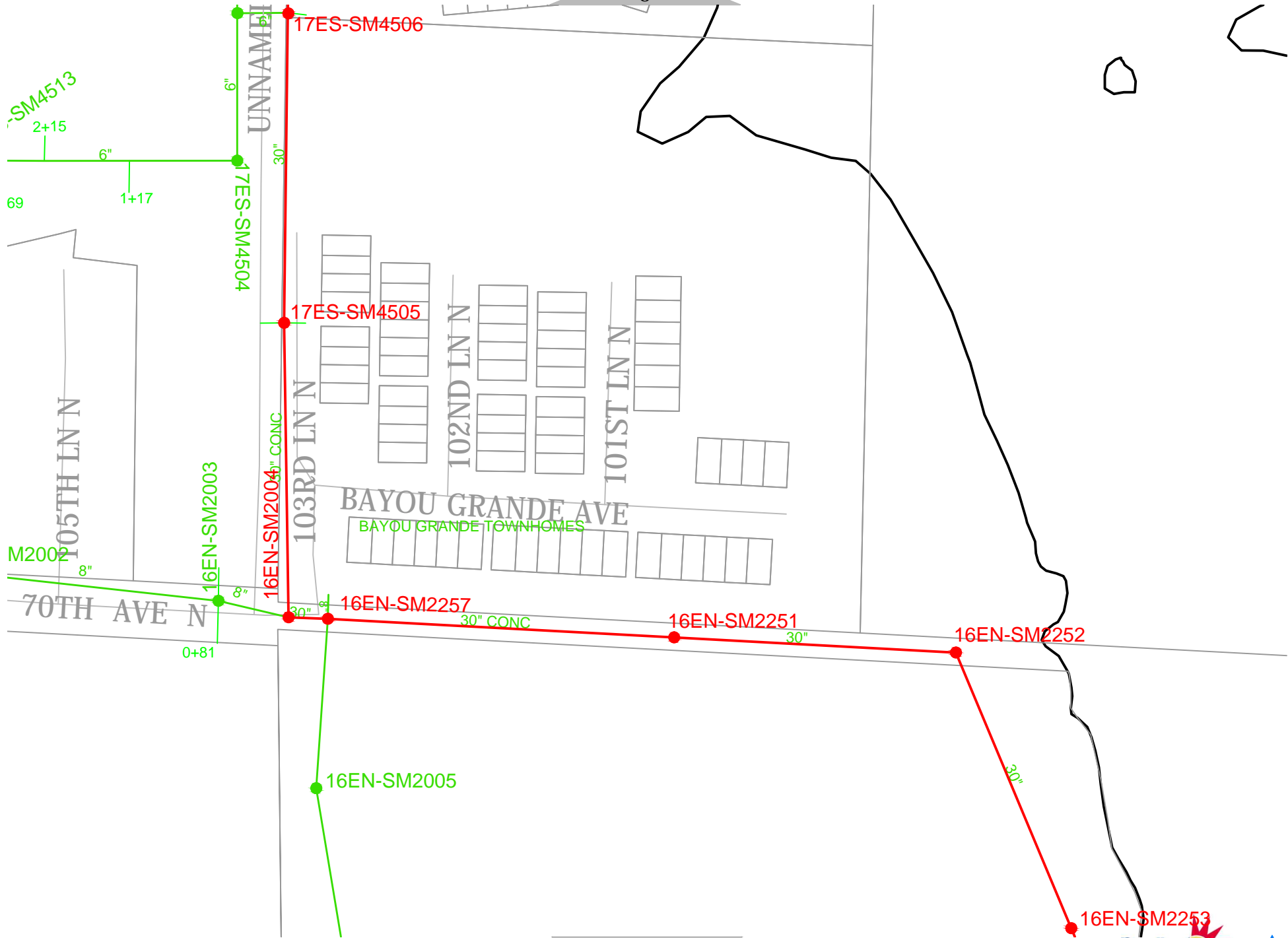


CIPP LINING 002747A - WORK PLAN 4

MAP 1



S:\Staff\PreniakE\PipeLining_Misc\20150922_Interceptor\WP4_A_Redo_OfPrevious\WO\CIP\002747A_WP4.dwg

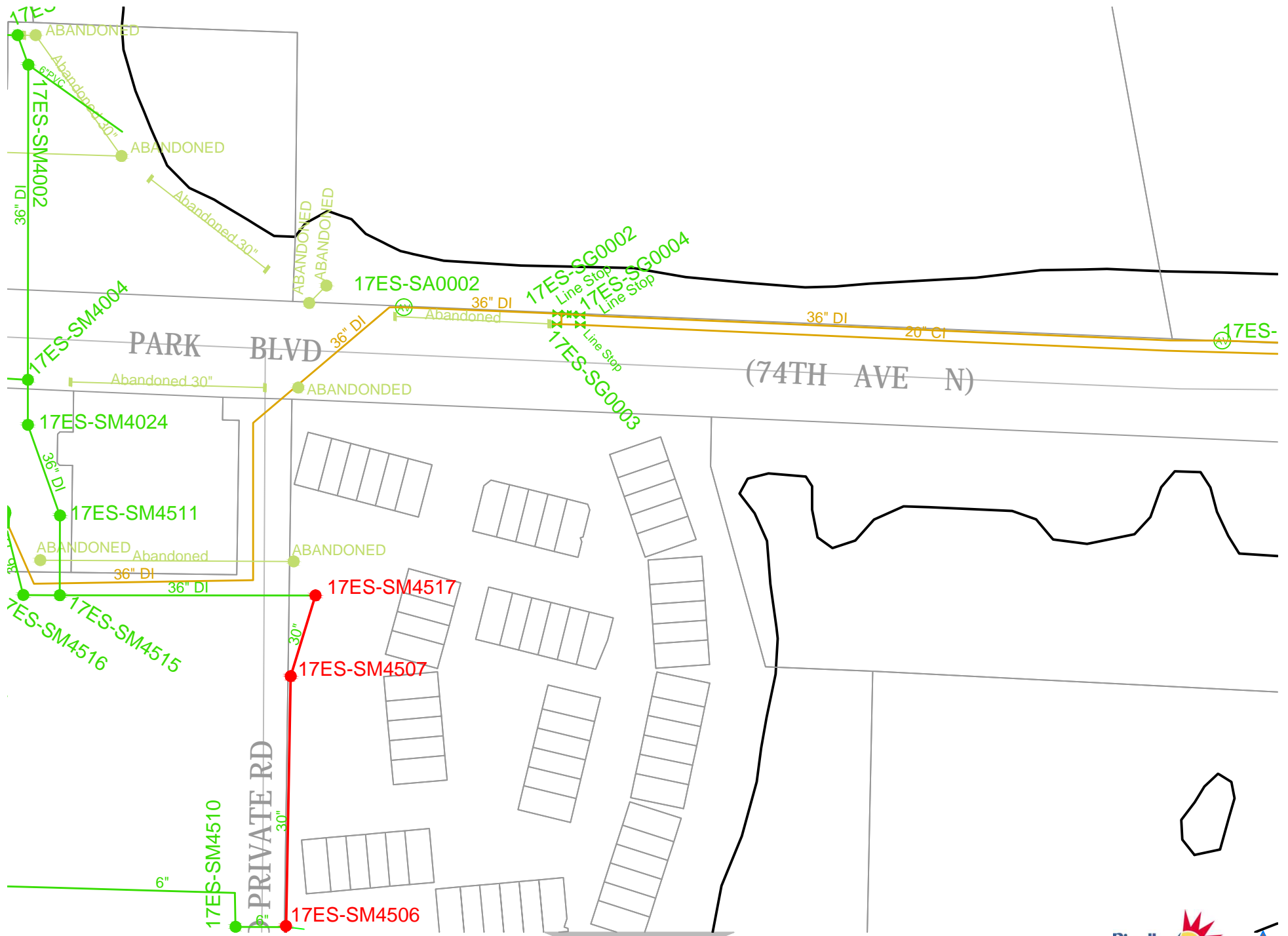


CIPP LINING 002747A - WORK PLAN 4

MAP 2



S:\Staff\PrelnakE\PipeLining_Misc\20150922_Interceptor\WP4_A_Redo_OfPrevious\WO\CIP\002747A_WP4.dwg

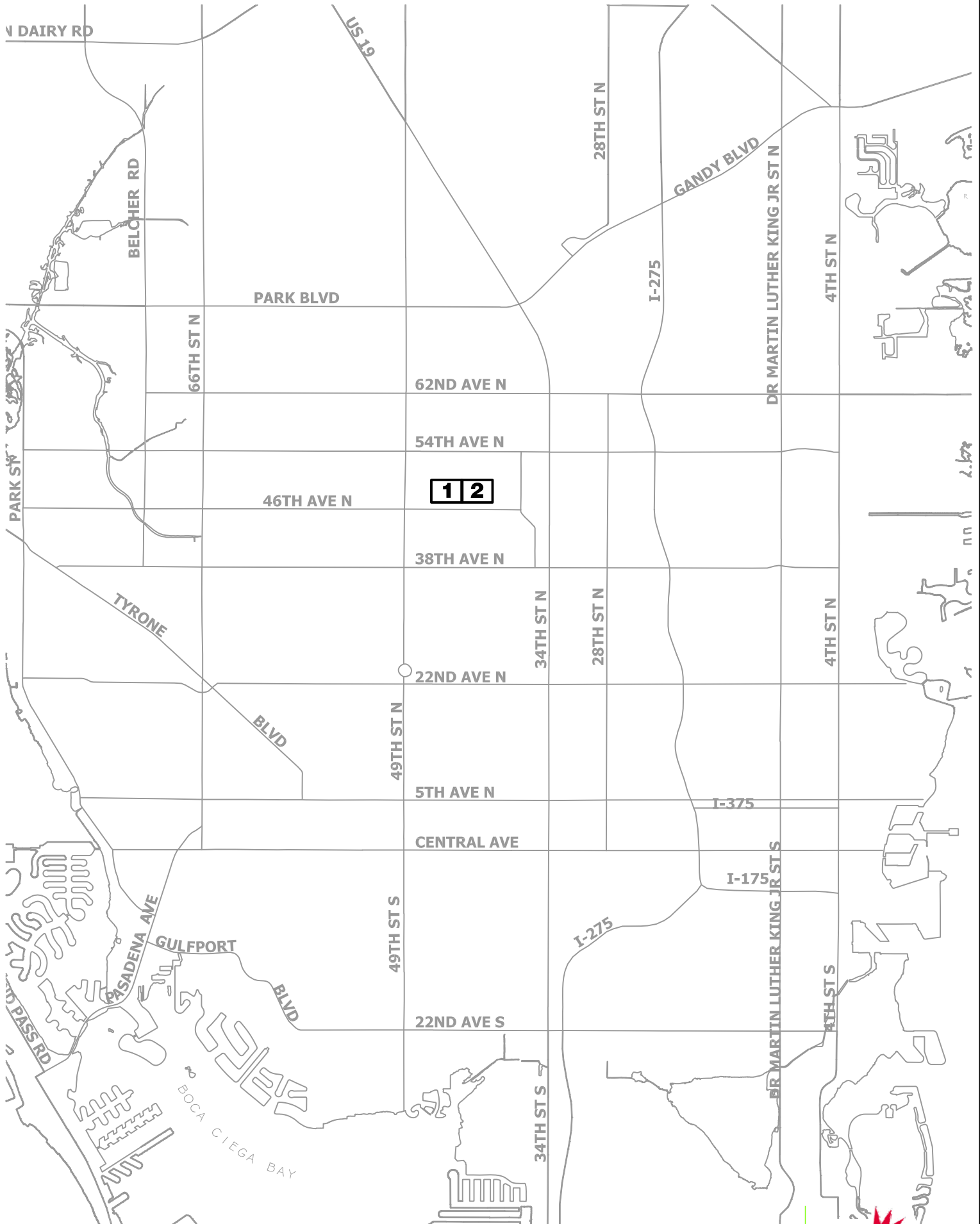


CIPP LINING 002747A - WORK PLAN 4

MAP 3



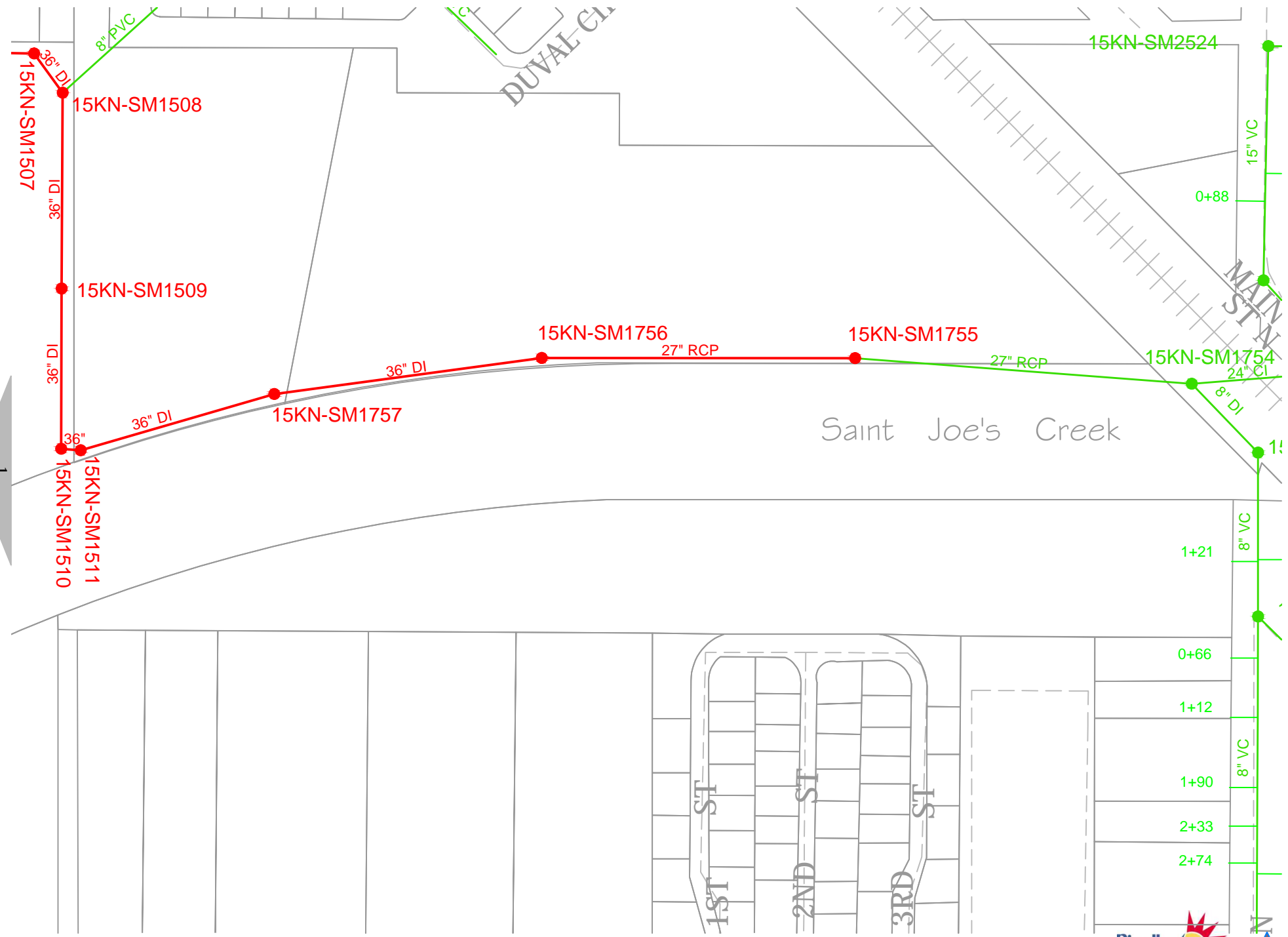
S:\Staff\PieniakE\PipeLining_Misc\20150922_Interceptor\WP5\CIPP002747A_FY15_R005.dwg



CIPP LINING 002747A WORK PLAN 5 INDEX



S:\Staff\PreniakE\PipeLining_Misc\20150922_Interceptor\WP5\CIPP002747A.dwg



CIPP LINING 002747A - WORK PLAN 5

MAP 2

