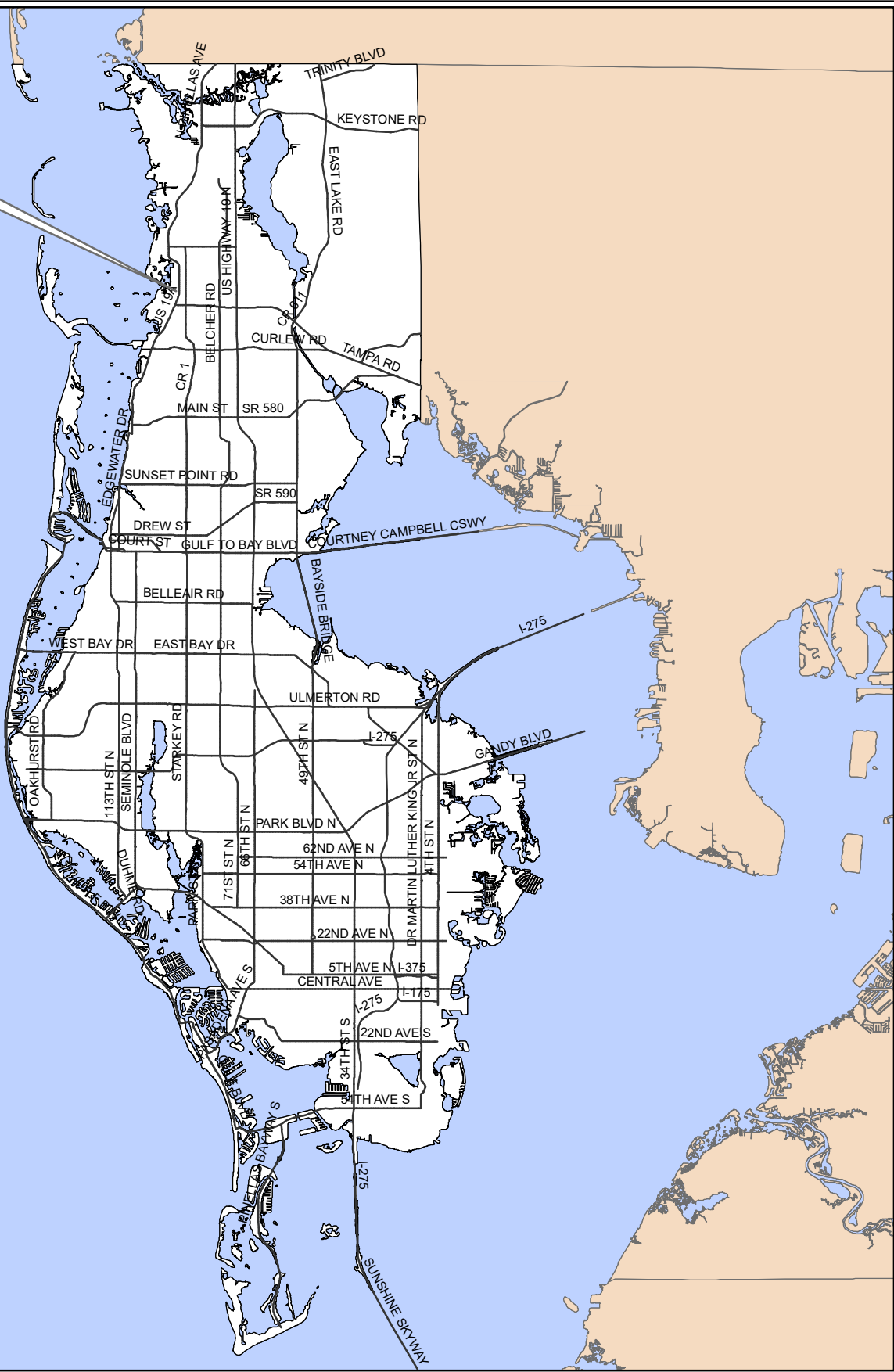


Z/LU-14-07-18



Surrounding Counties

**Z/LU-14-07-18**  
**Location Map**

**Zoning** From: P-1, Professional Offices  
To: C-1-CO, Neighborhood Commercial-Conditional Overlay

**Land Use** From: R/OG, Residential Office General  
To: CN, Commercial Neighborhood

With a Conditional Overlay to limit the use to a compound pharmacy.



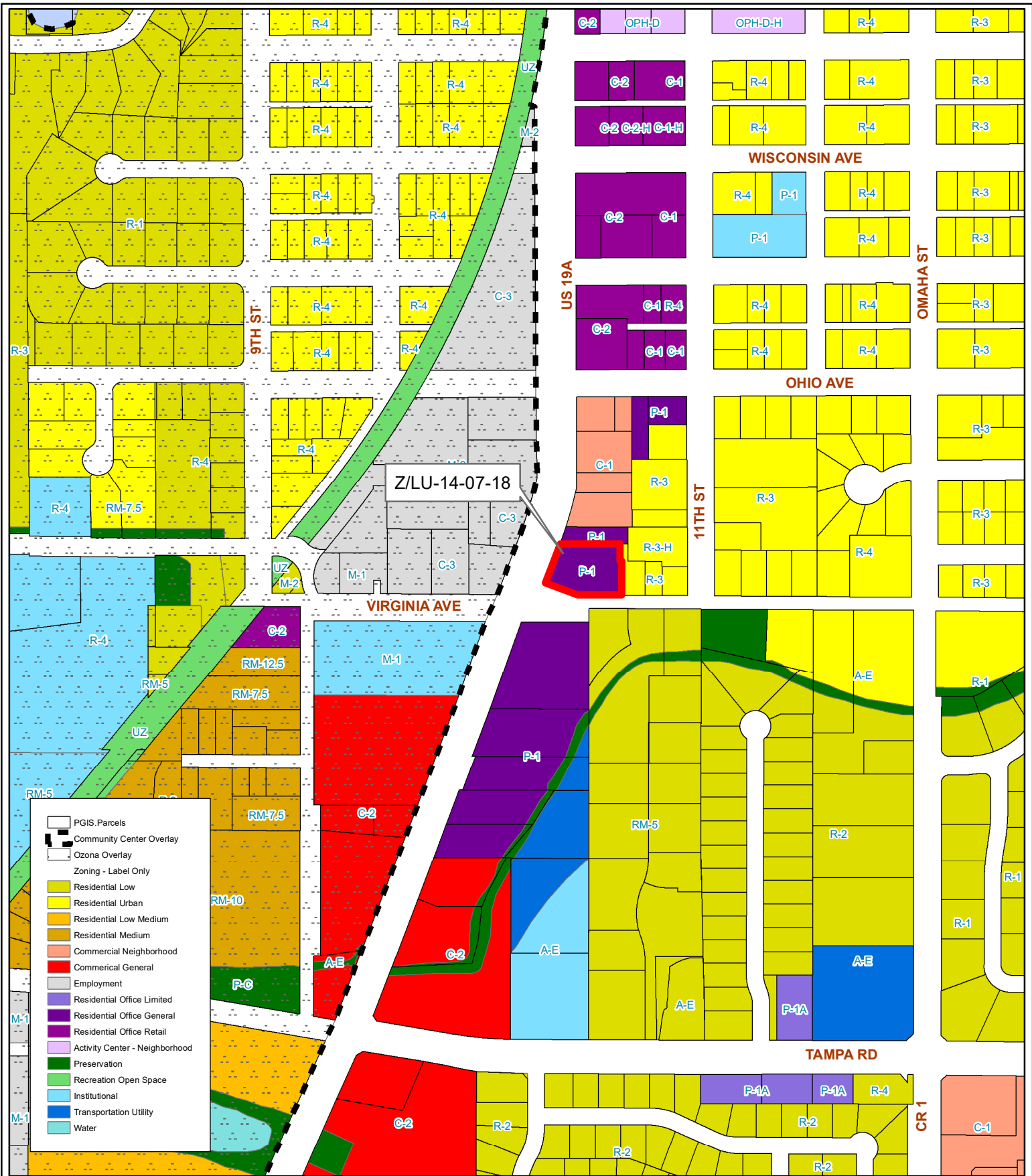
01/28/15/88560/148/0001

Prepared by: Pinellas County Planning Department



Date: 6/7/2018

1 inch = 4.5 miles



- PGIS Parcels
- Community Center Overlay
- Ozona Overlay
- Zoning - Label Only
- Residential Low
- Residential Urban
- Residential Low Medium
- Residential Medium
- Commercial Neighborhood
- Commercial General
- Employment
- Residential Office Limited
- Residential Office General
- Residential Office Retail
- Activity Center - Neighborhood
- Preservation
- Recreation Open Space
- Institutional
- Transportation Utility
- Water

**Z/LU-14-07-18**  
**Current Land Use & Zoning**

**Zoning** From: P-1, Professional Offices  
 To: C-1-CO, Neighborhood Commercial-Conditional Overlay

**Land Use** From: R/OG, Residential Office General  
 To: CN, Commercial Neighborhood

With a Conditional Overlay to limit the use to a compound pharmacy.



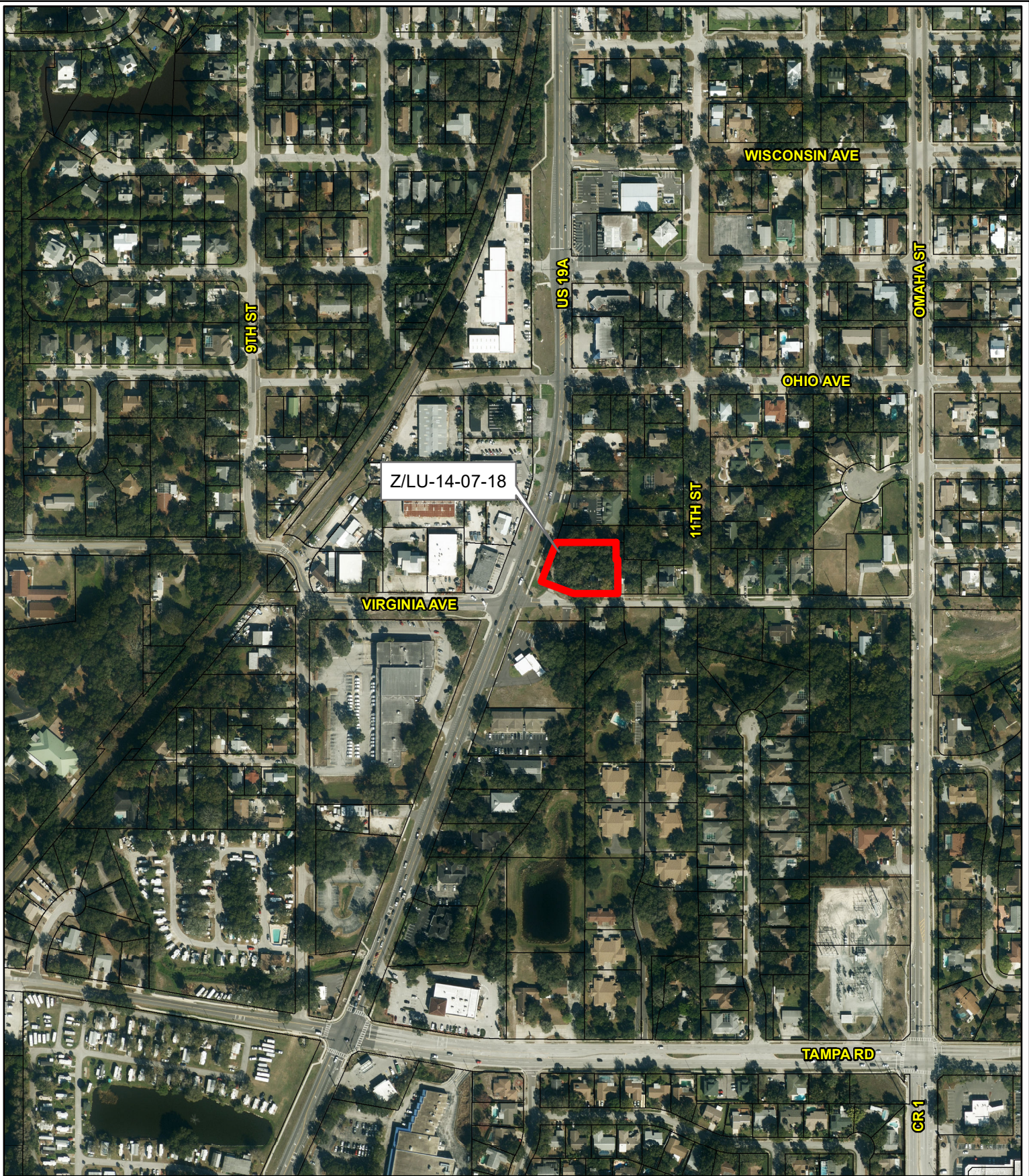
01/28/15/88560/148/0001

Prepared by: Pinellas County Planning Department



Date: 6/7/2018

1 inch = 0.07 miles



**Z/LU-14-07-18**

**Aerial Map**

**Zoning** From: P-1, Professional Offices  
 To: C-1-CO, Neighborhood Commercial-Conditional Overlay

**Land Use** From: R/OG, Residential Office General  
 To: CN, Commercial Neighborhood

With a Conditional Overlay to limit the use to a compound pharmacy.

01/28/15/88560/148/0001

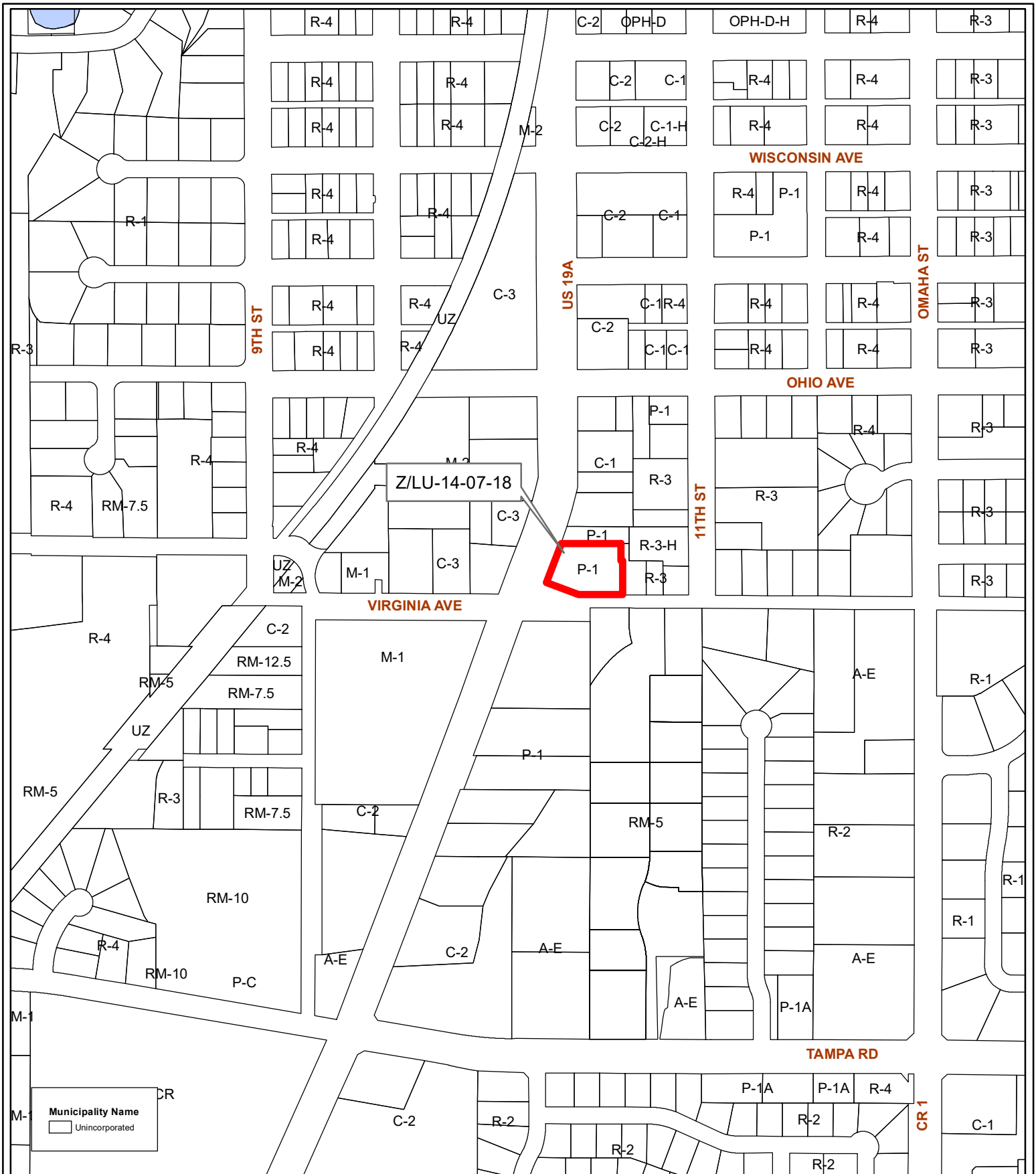
Prepared by: Pinellas County Planning Department



Date: 6/7/2018



1 inch = 0.07 miles



**Z/LU-14-07-18**  
**Municipal Map**

**Zoning** From: P-1, Professional Offices  
 To: C-1-CO, Neighborhood Commercial-Conditional Overlay

**Land Use** From: R/OG, Residential Office General  
 To: CN, Commercial Neighborhood

With a Conditional Overlay to limit the use to a compound pharmacy.



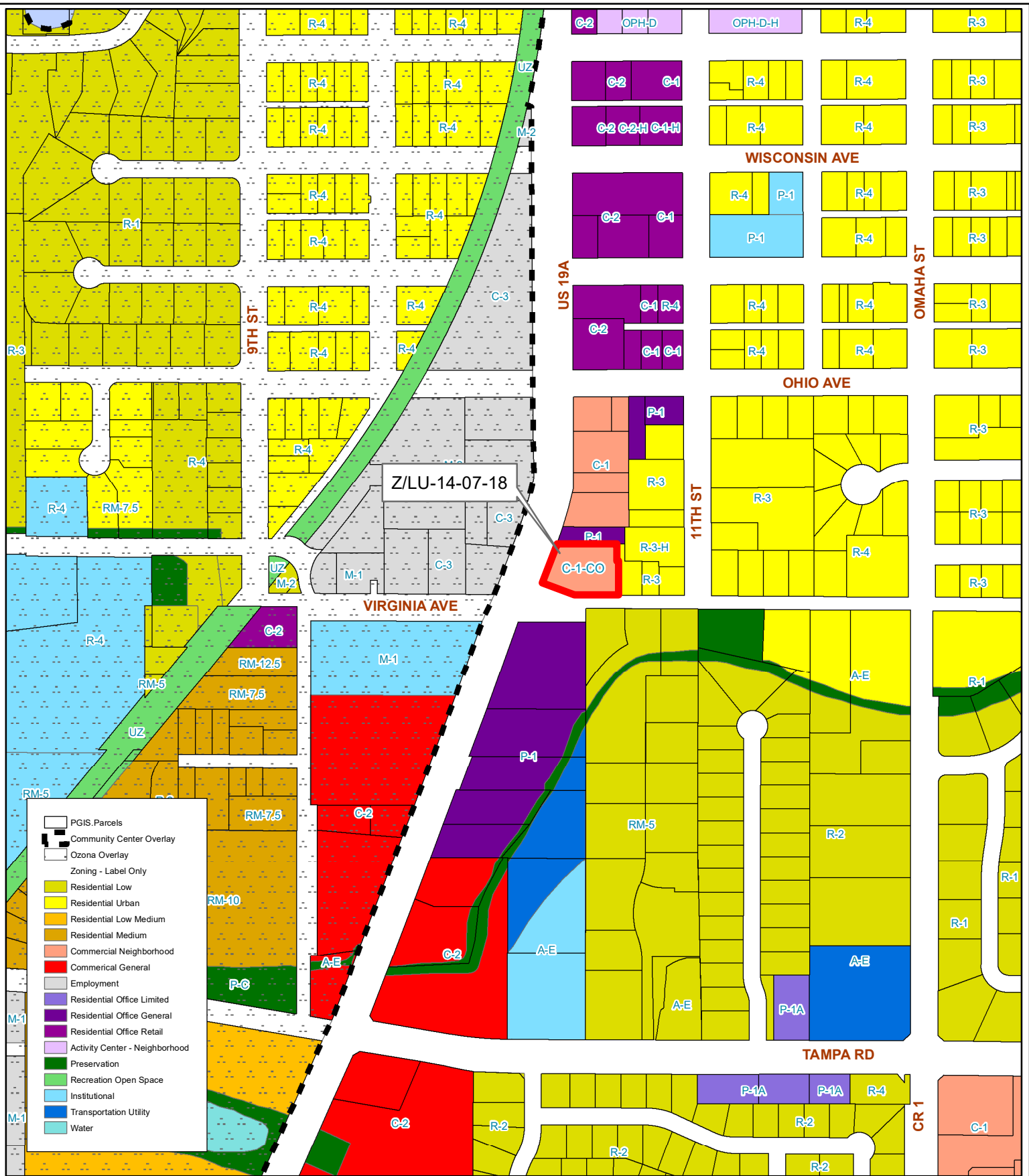
01/28/15/88560/148/0001

Prepared by: Pinellas County Planning Department



Date: 6/7/2018

1 inch = 0.07 miles



- PGIS Parcels
- Community Center Overlay
- Ozona Overlay
- Zoning - Label Only
- Residential Low
- Residential Urban
- Residential Low Medium
- Residential Medium
- Commercial Neighborhood
- Commercial General
- Employment
- Residential Office Limited
- Residential Office General
- Residential Office Retail
- Activity Center - Neighborhood
- Preservation
- Recreation Open Space
- Institutional
- Transportation Utility
- Water

**Z/LU-14-07-18**  
**Proposed Land Use & Zoning**

**Zoning** From: P-1, Professional Offices  
 To: C-1-CO, Neighborhood Commercial-Conditional Overlay

**Land Use** From: R/OG, Residential Office General  
 To: CN, Commercial Neighborhood

With a Conditional Overlay to limit the use to a compound pharmacy.



01/28/15/88560/148/0001

Prepared by: Pinellas County Planning Department



Date: 6/7/2018

1 inch = 0.07 miles