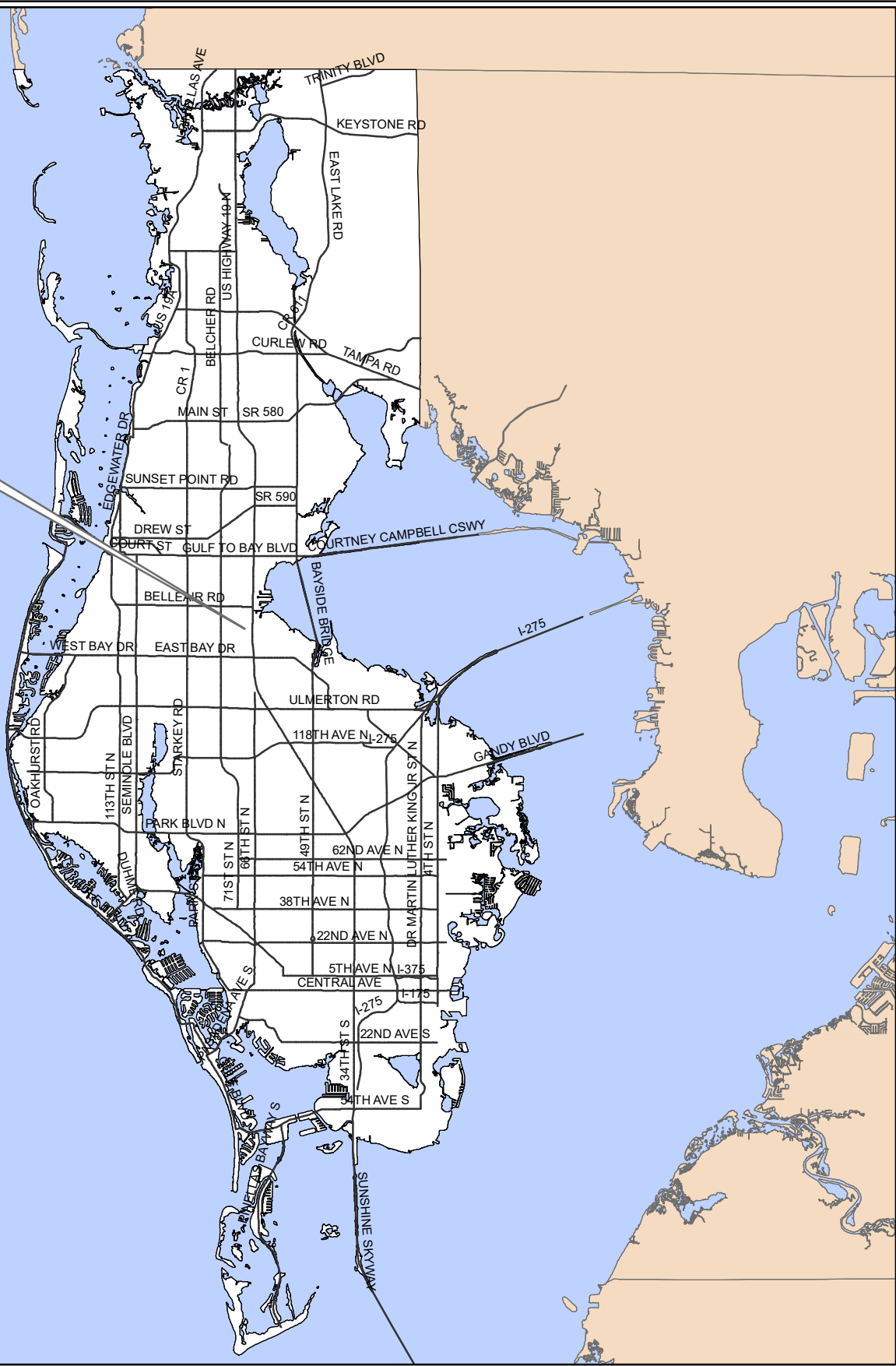


Z/LU-17-07-18



Surrounding Counties

**Z/LU-17-07-18**  
**Location Map**

**Zoning** **From:** C-2, General Retail Commercial & Limited Services  
**To:** R-1, Single Family Residential (9,500 sf minimum) (west 1.2 acres)  
**Land Use** **From:** RLM, Residential Low Medium  
**To:** CG, Commercial General (east 1.5 acres)  
 Development Agreement limiting the western 1.2 acres to a maximum of two single family homes and the eastern 1.5 acres to automobile, RV & boat storage, and requiring enhanced buffering and shielded/directional lighting (see staff report for details)

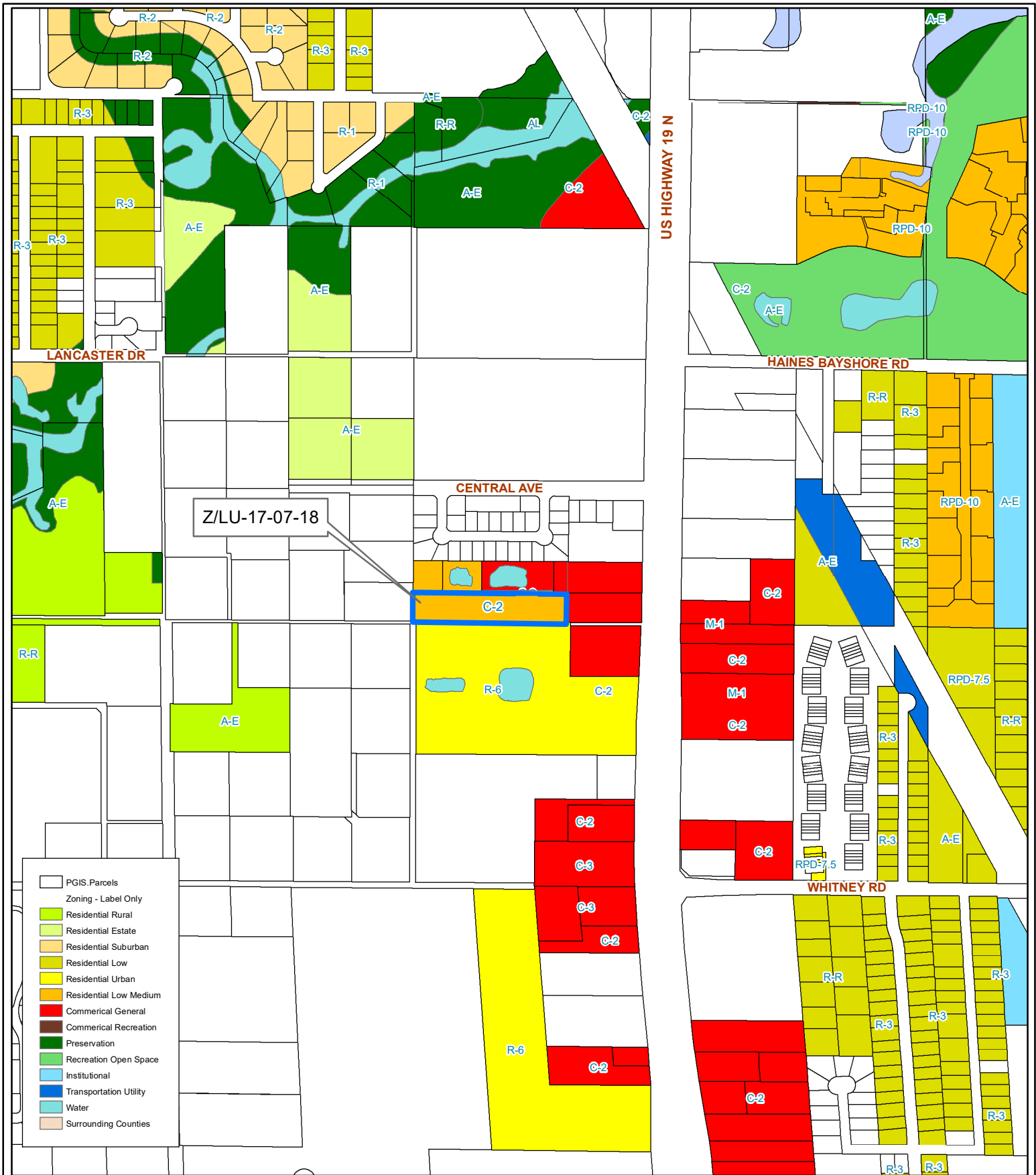


A PORTION OF 30/29/16/55044/000/0024  
 Prepared by: Pinellas County Planning Department



Date: 5/31/2018

1 inch = 4.5 miles



**Z/LU-17-07-18**  
**Current Land Use & Zoning**

**Zoning** From: C-2, General Retail Commercial & Limited Services  
 To: R-1, Single Family Residential (9,500 sf minimum) (west 1.2 acres)  
**Land Use** From: RLM, Residential Low Medium  
 To: CG, Commercial General (east 1.5 acres)

Development Agreement limiting the western 1.2 acres to a maximum of two single family homes and the eastern 1.5 acres to automobile, RV & boat storage, and requiring enhanced buffering and shielded/directional lighting (see staff report for details).

A PORTION OF 30/29/16/55044/000/0024

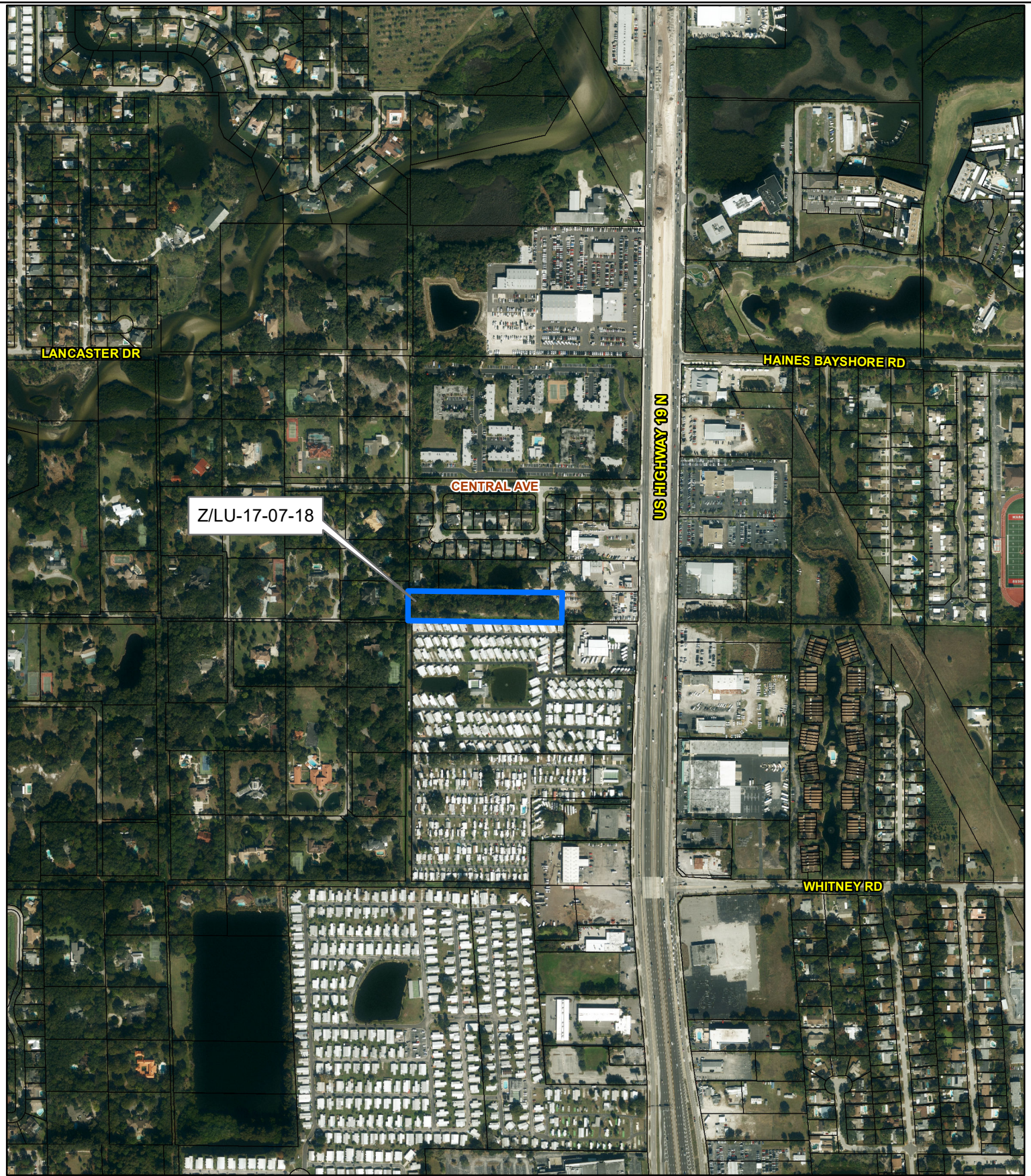
Prepared by: Pinellas County Planning Department



Date: 5/31/2018



1 inch = 0.12 miles



**Z/LU-17-07-18**

**Aerial Map**

**Zoning**

**From:** C-2, General Retail Commercial & Limited Services  
**To:** R-1, Single Family Residential (9,500 sf minimum) (west 1.2 acres)

**Land Use**

**From:** RLM, Residential Low Medium  
**To:** CG, Commercial General (east 1.5 acres)

Development Agreement limiting the western 1.2 acres to a maximum of two single family homes and the eastern 1.5 acres to automobile, RV & boat storage, and requiring enhanced buffering and shielded/directional lighting (see staff report for details).

A PORTION OF 30/29/16/55044/000/0024

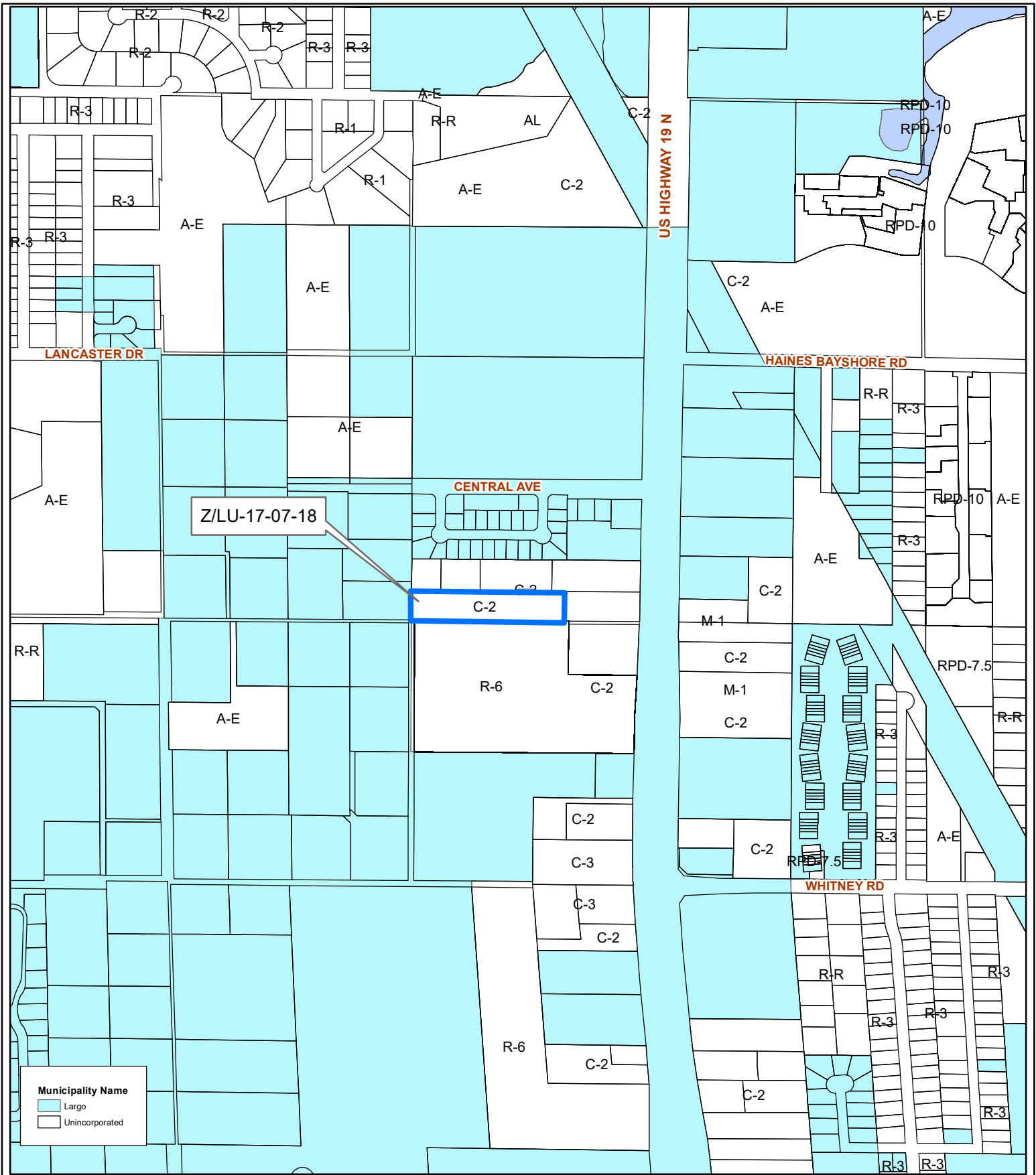
Prepared by: Pinellas County Planning Department



Date: 5/31/2018



1 inch = 0.12 miles



**Municipality Name**  
 Largo  
 Unincorporated

**Z/LU-17-07-18**

**Municipal Map**

**Zoning From:** C-2, General Retail Commercial & Limited Services  
**To:** R-1, Single Family Residential (9,500 sf minimum) (west 1.2 acres)  
**Land Use From:** RLM, Residential Low Medium  
**To:** CG, Commercial General (east 1.5 acres)

Development Agreement limiting the western 1.2 acres to a maximum of two single family homes and the eastern 1.5 acres to automobile, RV & boat storage, and requiring enhanced buffering and shielded/directional lighting (see staff report for details).

A PORTION OF 30/29/16/55044/000/0024

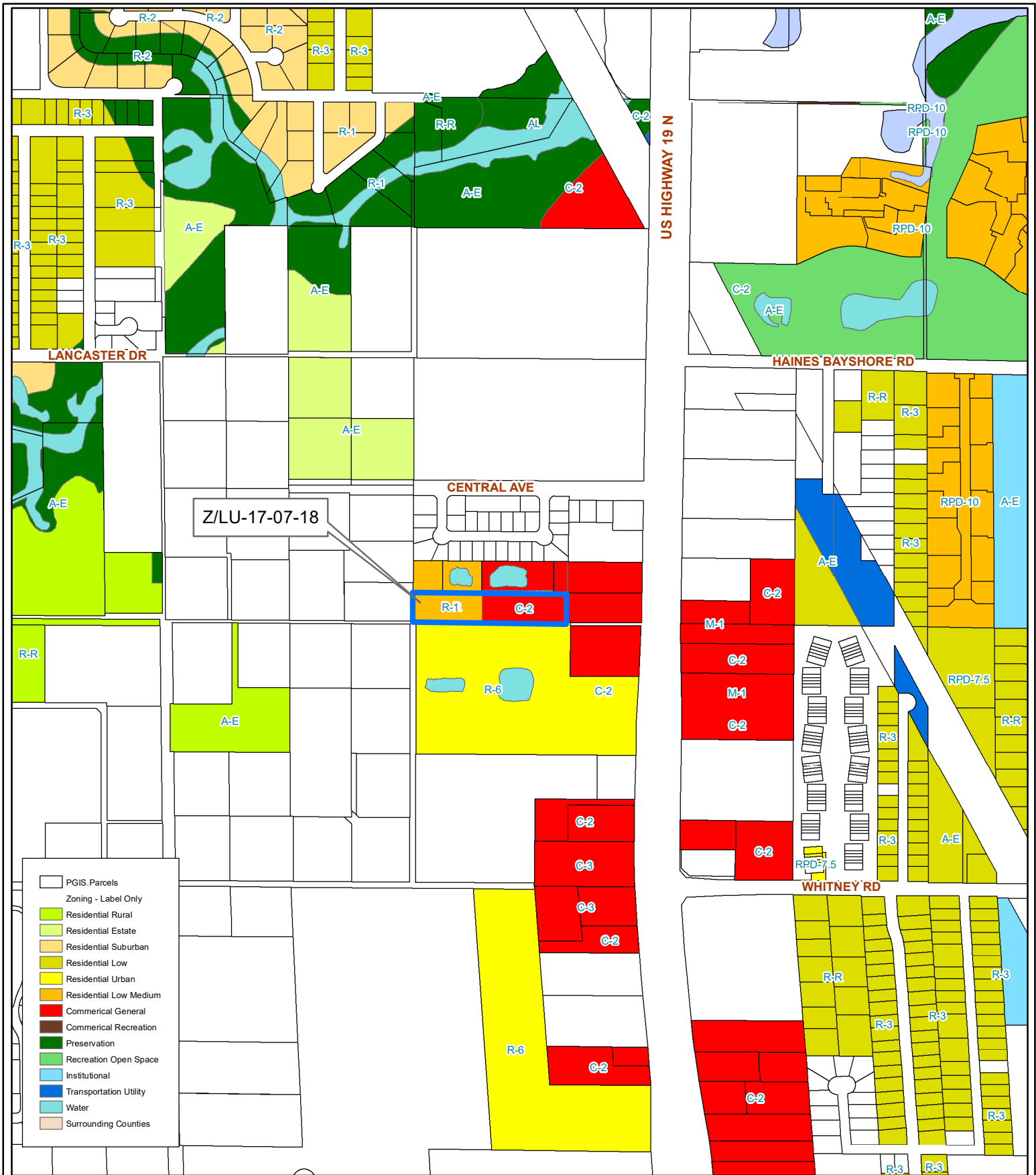
Prepared by: Pinellas County Planning Department



Date: 5/31/2018



1 inch = 0.12 miles



- PGIS Parcels
- Zoning - Label Only
- Residential Rural
- Residential Estate
- Residential Suburban
- Residential Low
- Residential Urban
- Residential Low Medium
- Commercial General
- Commercial Recreation
- Preservation
- Recreation Open Space
- Institutional
- Transportation Utility
- Water
- Surrounding Counties

**Z/LU-17-07-18**  
**Proposed Land Use & Zoning**

**Zoning** From: C-2, General Retail Commercial & Limited Services  
 To: R-1, Single Family Residential (9,500 sf) (west 1.2 acres)  
**Land Use** From: RLM, Residential Low Medium  
 To: CG, Commercial General (east 1.5 acres)

Development Agreement limiting the western 1.2 acres to a maximum of two single family homes and the eastern 1.5 acres to automobile, RV & boat storage, and requiring enhanced buffering and shielded/directional lighting (see staff report for details)

A PORTION OF 30/29/16/55044/000/0024

Prepared by: Pinellas County Planning Department



Date: 6/5/2018



1 inch = 0.12 miles