



# Doing Things!

**Dunedin Causeway Bridges**

**Recommended Alternative Selection**

**January 24, 2017**



# Project Limits

Untitled Map  
Write a description for your map.

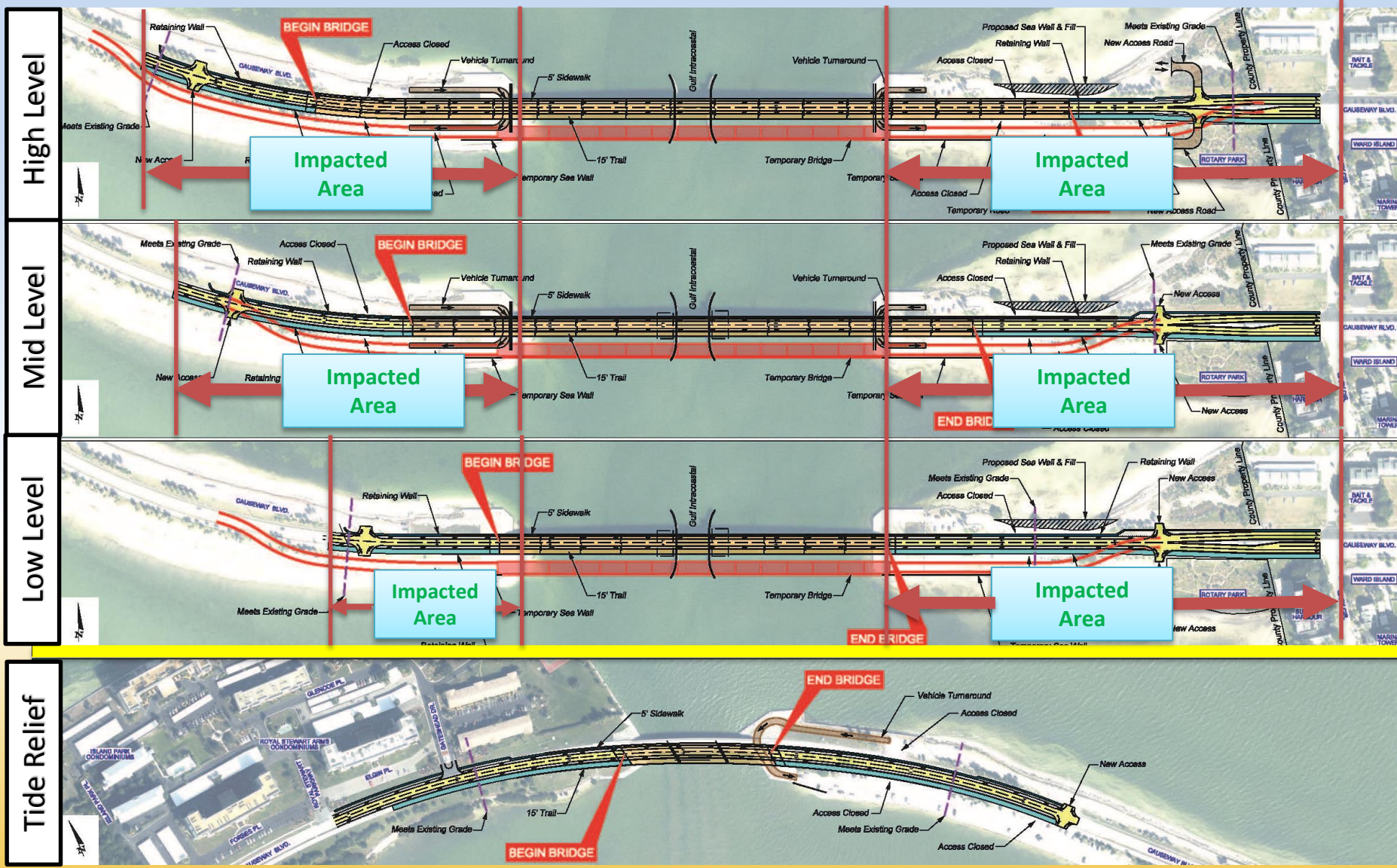


West of Royal Stewart Arms Parkway on Honeymoon Island to the intersection of Gary Place/Gary Circle on Ward Island  
Approximately 2.0 miles

# Project Overview

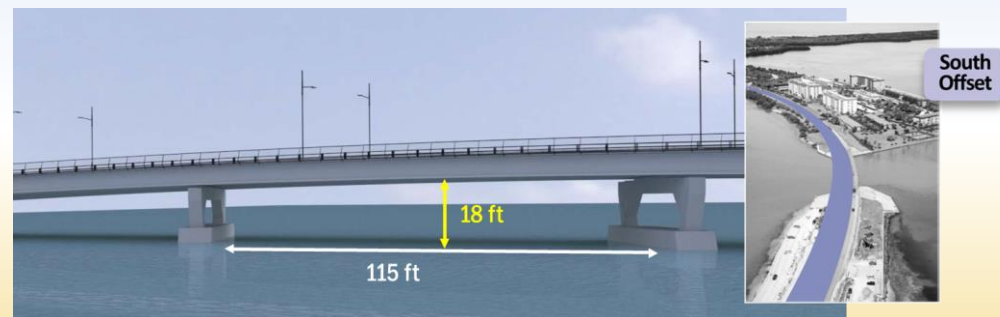
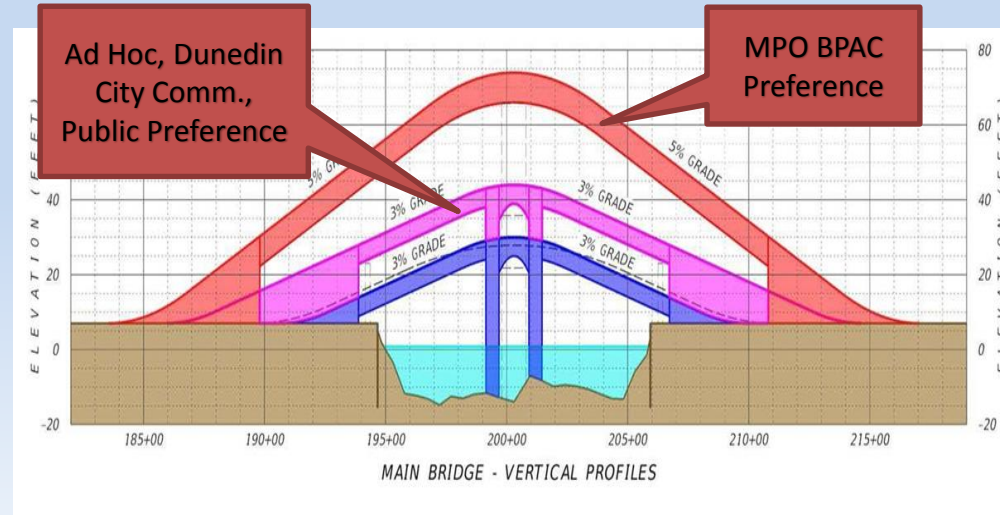
- PD&E Study Completed Items
  - ✓ Data Collection
  - ✓ Alternatives Development & Analysis
  - ✓ Public Input

# Bridge Replacement Alternatives



# Bridge Replacement Alternatives\*

- Main Bridge
  - Existing Alignment with Temporary Bridge
    - High-Level (\$60M)
    - Mid-Level (\$81M)
    - Low-Level (\$77M)
- Tide Relief Bridge
  - South Alignment
    - Low-Level
- No Build (\$8M) & Major Rehab (\$26M)
- BCC to select Alternative for each bridge

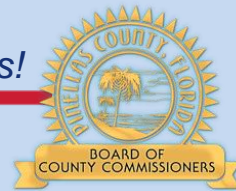


# Other Considerations

- Existing bridge remaining life: 10-15 years
- Estimated O&M cost: \$8M
- Life of new bridge 75 years – Sea level rise could be a factor
- Gulf Intracoastal Waterway relocation highly unfeasible; current boat access needs to be maintained
- FDOT Work Program suggests Federal funds limited to \$3.75M
- Award of Federal funds are competitive and subject to Congressional Appropriation
- In order to compete for any Federal Funds, the PD&E must be completed

# Expanded PD&E Scope - Sea Level Rise

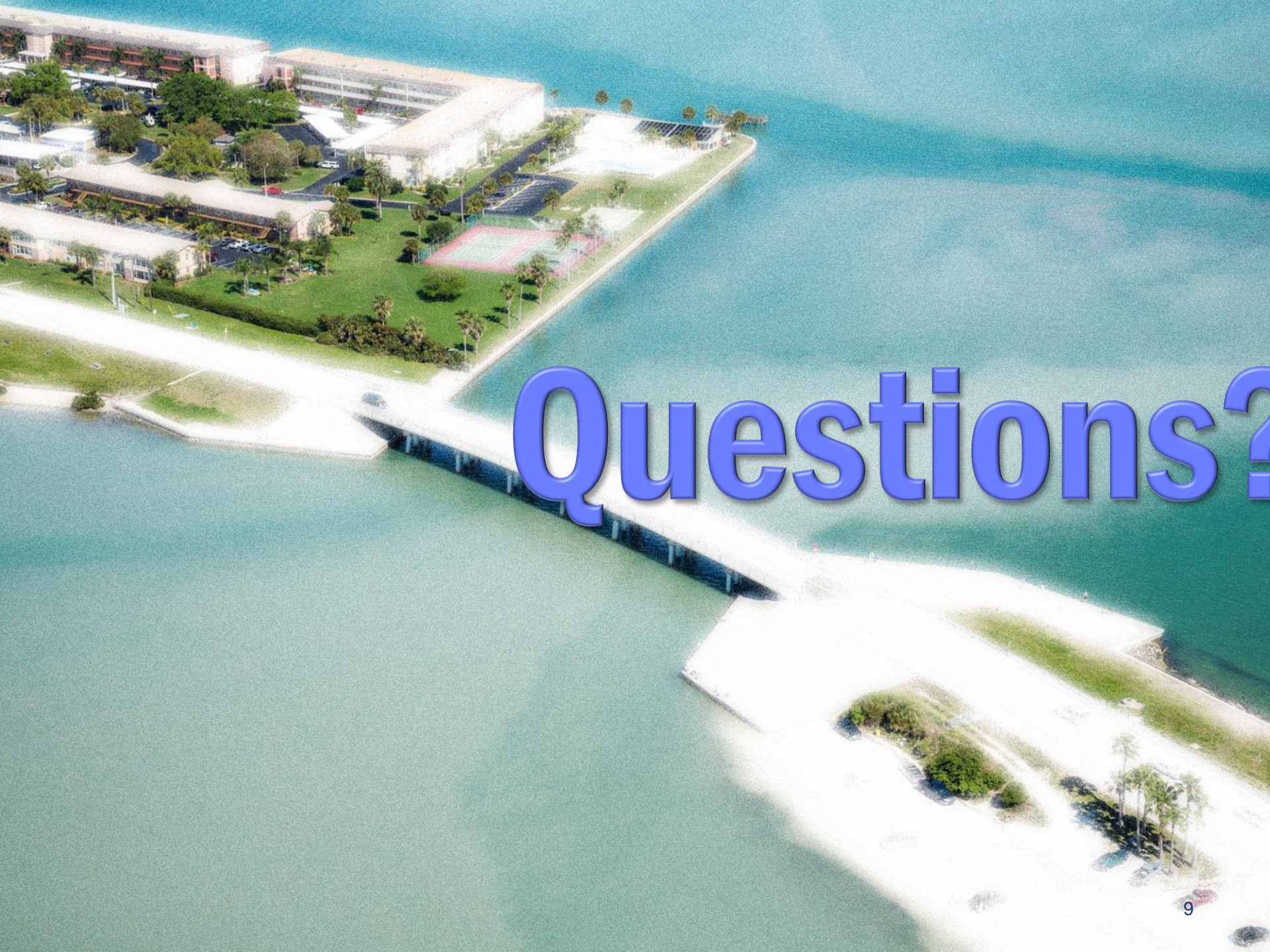
- What is the expanded scope?
  - Determine requirements & cost to shore up bridges and approaches to combat sea level rise and other effects
  - \$40,000 estimated additional cost
  - No additional time needed (beyond recommended extension)
  - Analysis could impact recommended replacement alternative
- Currently four potential scenarios projected out to 2100:
  - NOAA Low – 0.93 feet
  - NOAA Intermediate Low – 1.97 feet
  - NOAA Intermediate High – 4.26 feet
  - NOAA High – 6.89 feet



# Next Steps

- **Select Alternative from Existing Analysis**
    - Alternative Selected
  - **Revisit Alternatives with expanded Sea Level Rise Analysis**
    - Expanded Sea Level Rise Analysis
      - Re-evaluate Alternatives
      - BCC Presentation - seek direction
- 
- Timeline to be informed by consultant and staff
  - Item to be presented to BCC at the next meeting





# Questions?