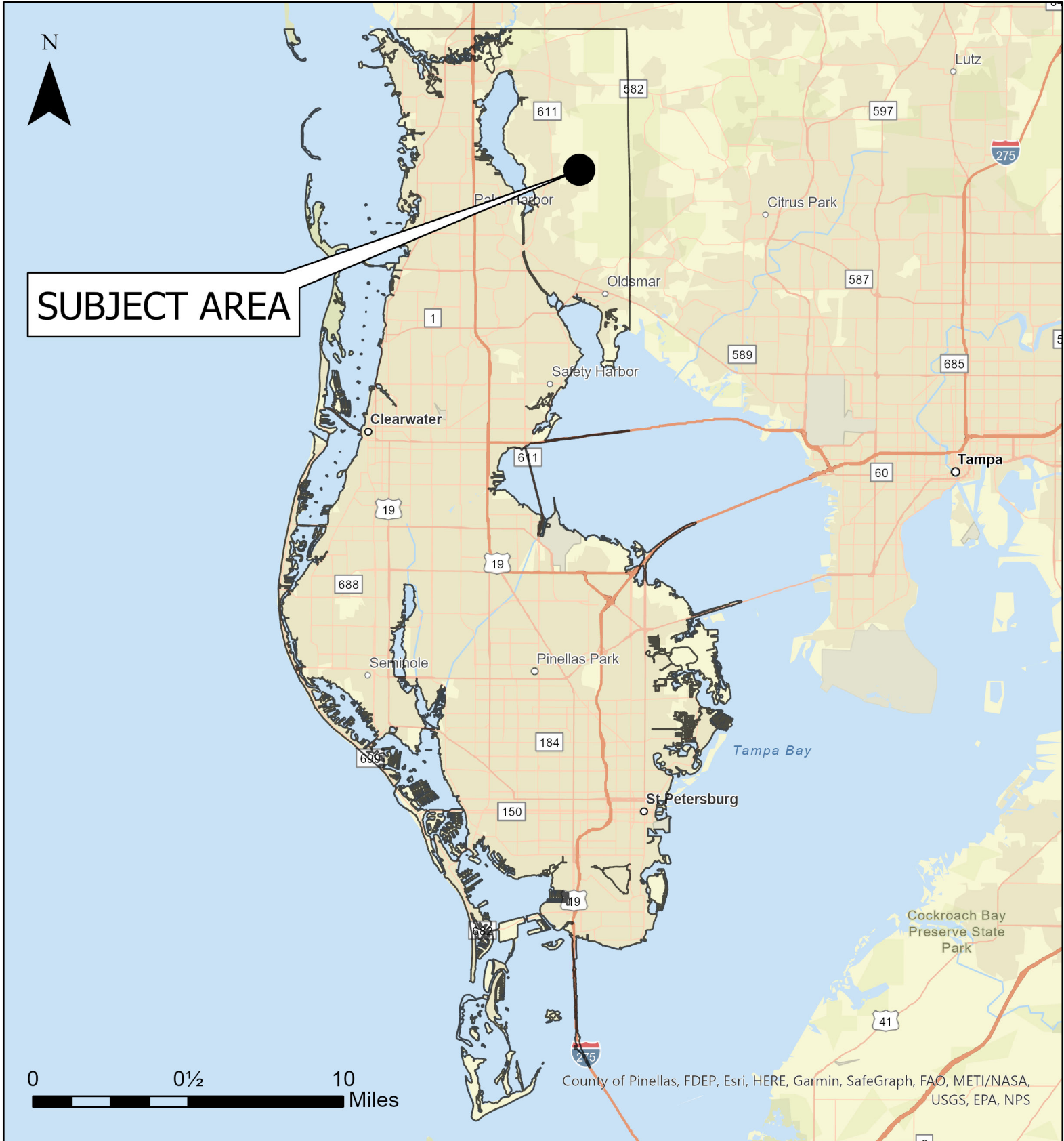


Case CW23-04

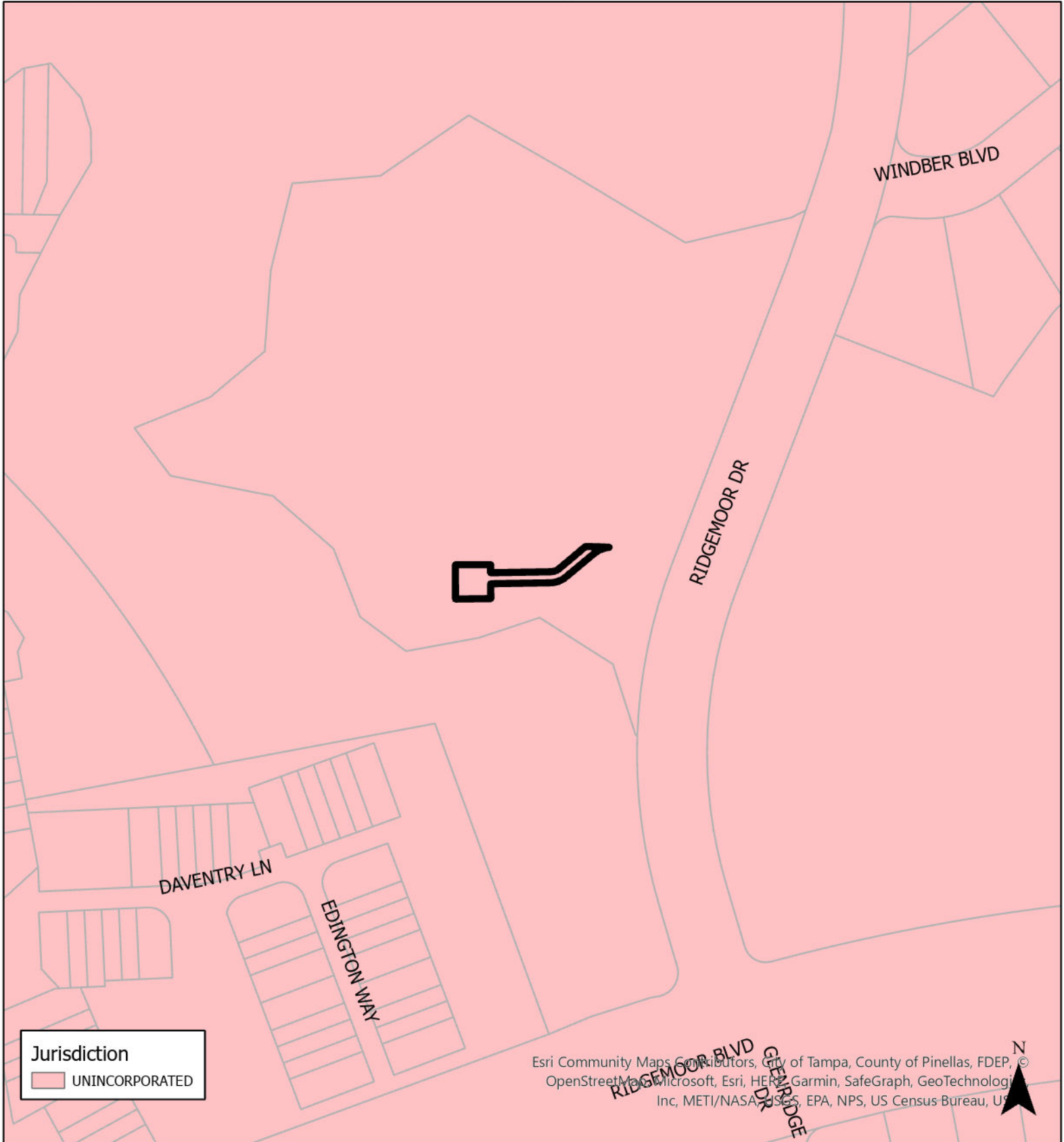
Map 1: Location Map



JURISDICTION: Pinellas County **FROM: Recreation/Open Space**
AREA: 0.116 acres m.o.l. **TO: Public/Semi-Public**

Case CW23-04

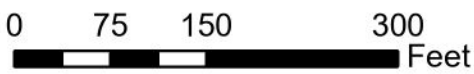
Map 2: Jurisdictional Map



Jurisdiction
UNINCORPORATED

Esri Community Maps Contributors, City of Tampa, County of Pinellas, FDEP, © OpenStreetMap contributors, Microsoft, Esri, HERE, Garmin, SafeGraph, GeoTechnology, Inc, METI/NASA, USGS, EPA, NPS, US Census Bureau, US

JURISDICTION: Pinellas County FROM: Recreation/Open Space
AREA: 0.116 acres m.o.l. TO: Public/Semi-Public



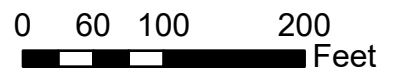
Case CW23-04

Map 3: Aerial Map



Esri Community Maps Contributors, City of Tampa, County of Pinellas, FDEPR, Inc.
© OpenStreetMap, Microsoft, Esri, HERE, Garmin, SafeGraph, GeoTechnologies, Inc., METI/NASA, USGS, EPA, NPS, US Census Bureau, USDA

JURISDICTION: Pinellas County **FROM: Recreation/Open Space**
AREA: 0.116 acres m.o.l. **TO: Public/Semi-Public**



Case CW23-04

Map 4: Current Countywide Plan Map



FORWARD
PINELLAS

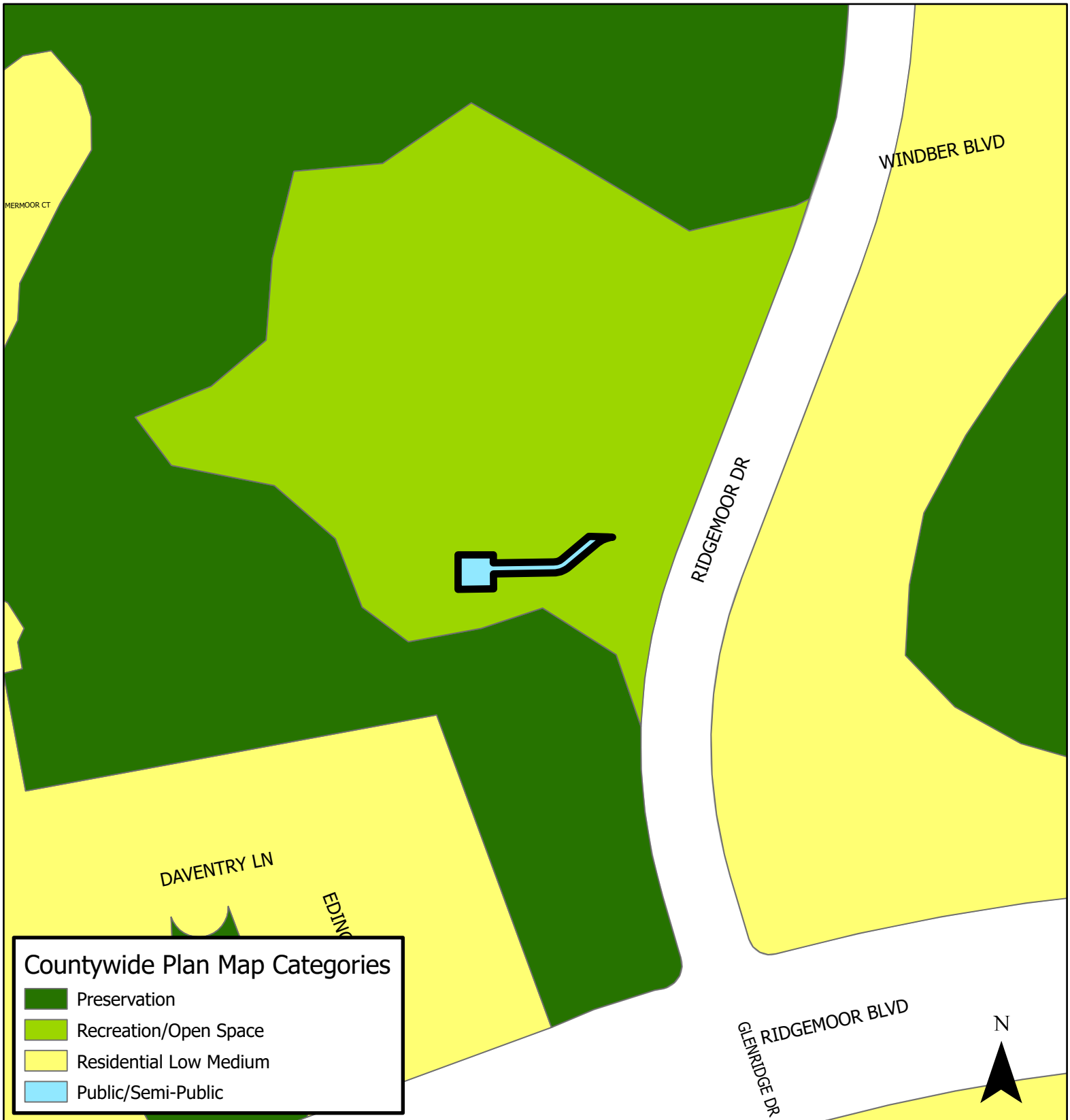


JURISDICTION: Pinellas County FROM: Recreation/Open Space

AREA: 0.116 acres m.o.l.

TO: Public/Semi-Public





JURISDICTION: Pinellas County FROM: Recreation/Open Space

AREA: 0.116 acres m.o.l.

TO: Public/Semi-Public

