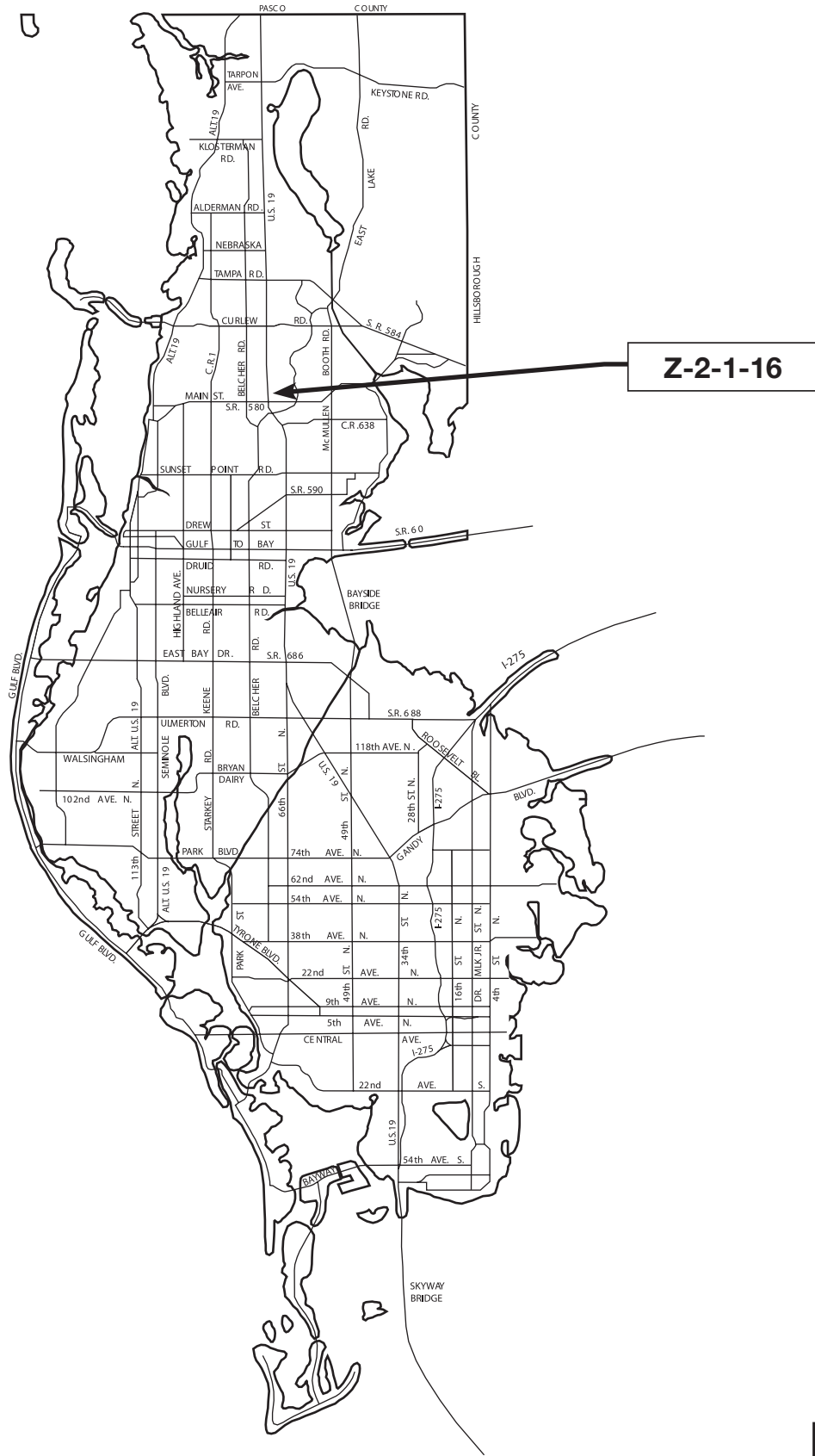


LOCATION MAP



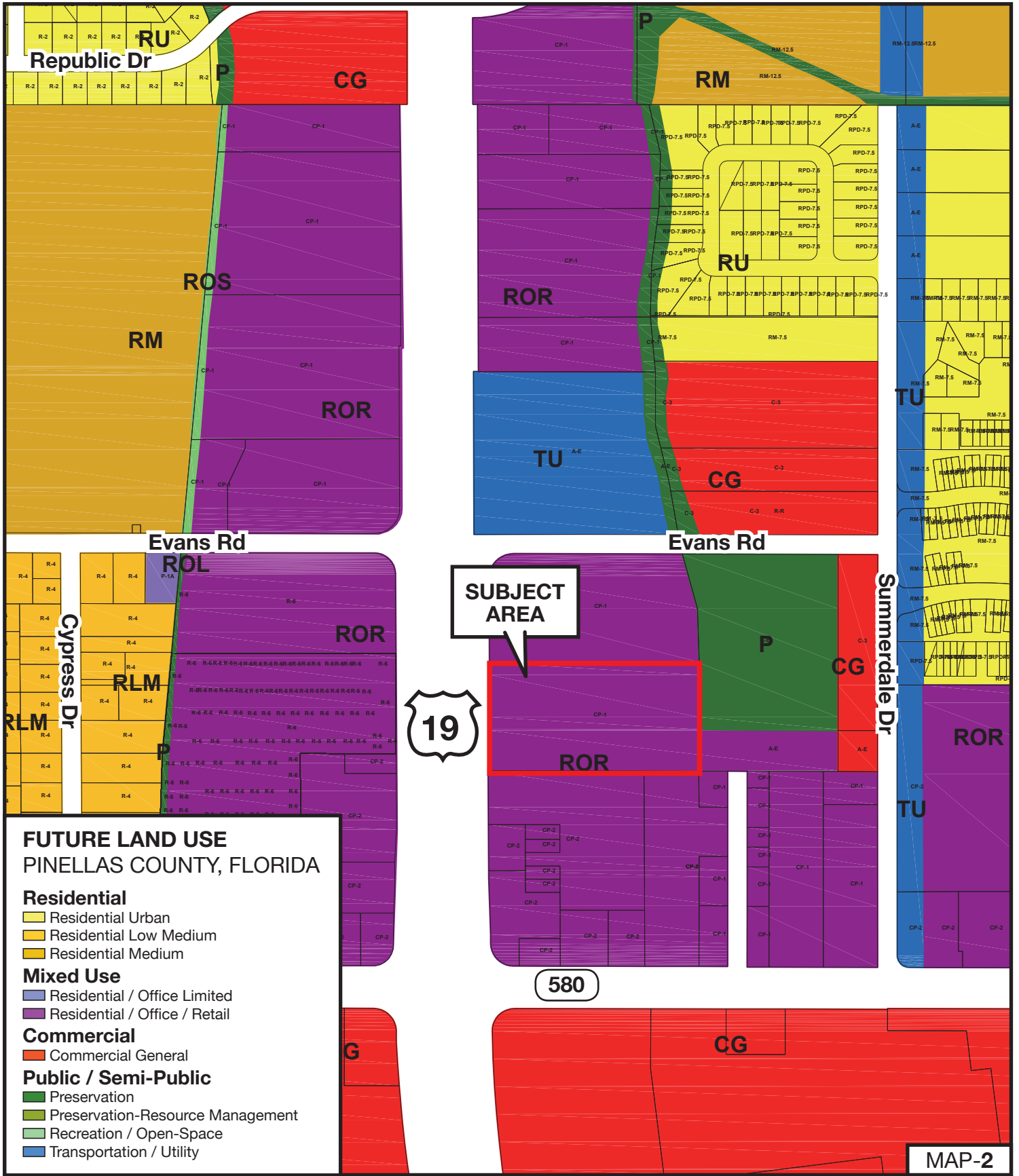
MAP-1

Z-2-1-16

**Zoning From: CP-1, Commercial Parkway
To: CP-2, Commercial Parkway**

Parcel I.D. 30/28/16/07218/000/1100
Prepared by: Pinellas County Planning Department November 2015





FUTURE LAND USE
PINELLAS COUNTY, FLORIDA

Residential

- Residential Urban
- Residential Low Medium
- Residential Medium

Mixed Use

- Residential / Office Limited
- Residential / Office / Retail

Commercial

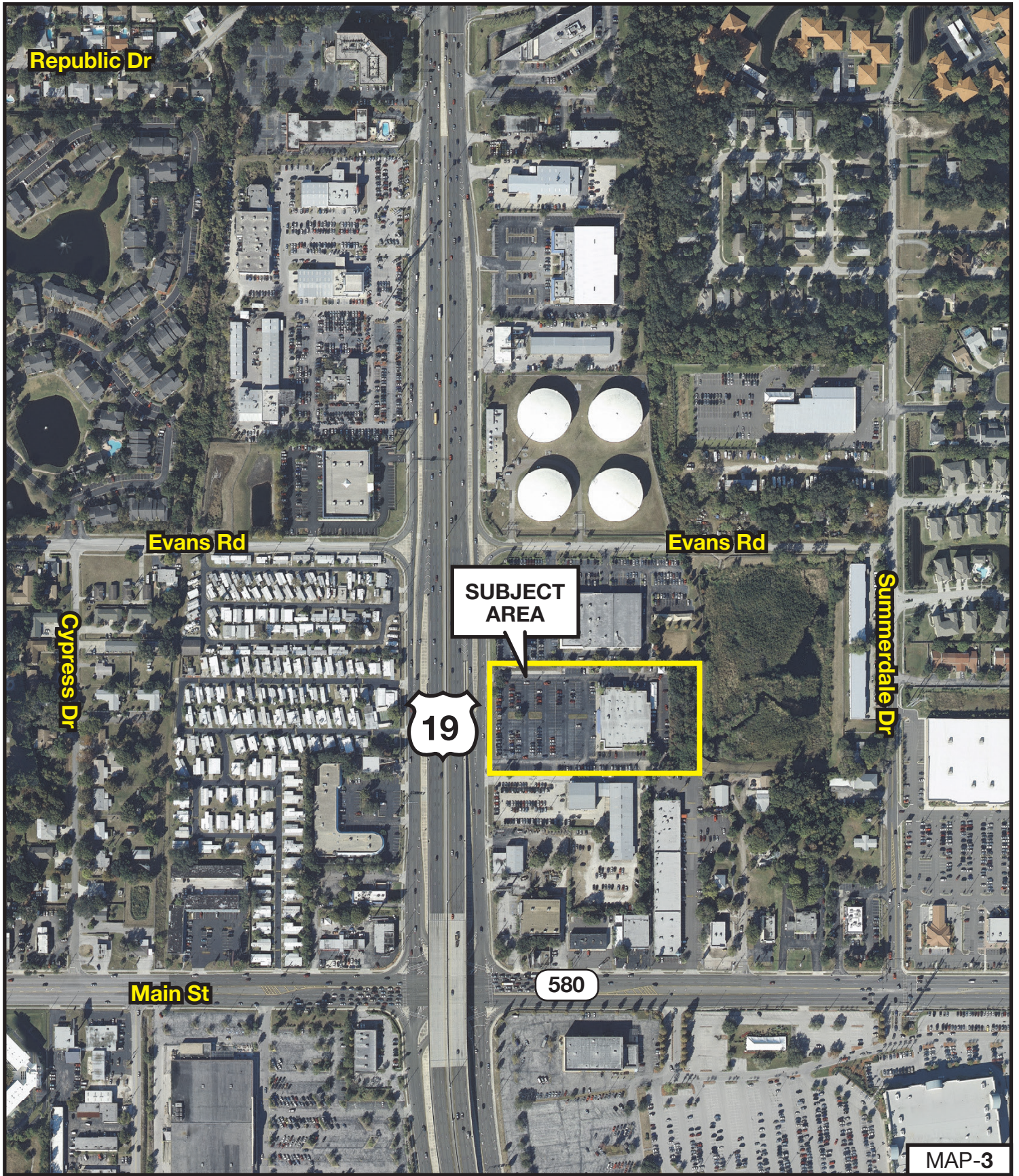
- Commercial General

Public / Semi-Public

- Preservation
- Preservation-Resource Management
- Recreation / Open-Space
- Transportation / Utility

Z-2-1-16	Zoning From: CP-1, Commercial Parkway To: CP-2, Commercial Parkway		
Parcel I.D. 30/28/16/07218/000/1100		Prepared by: Pinellas County Planning Department November 2015	

MAP-2

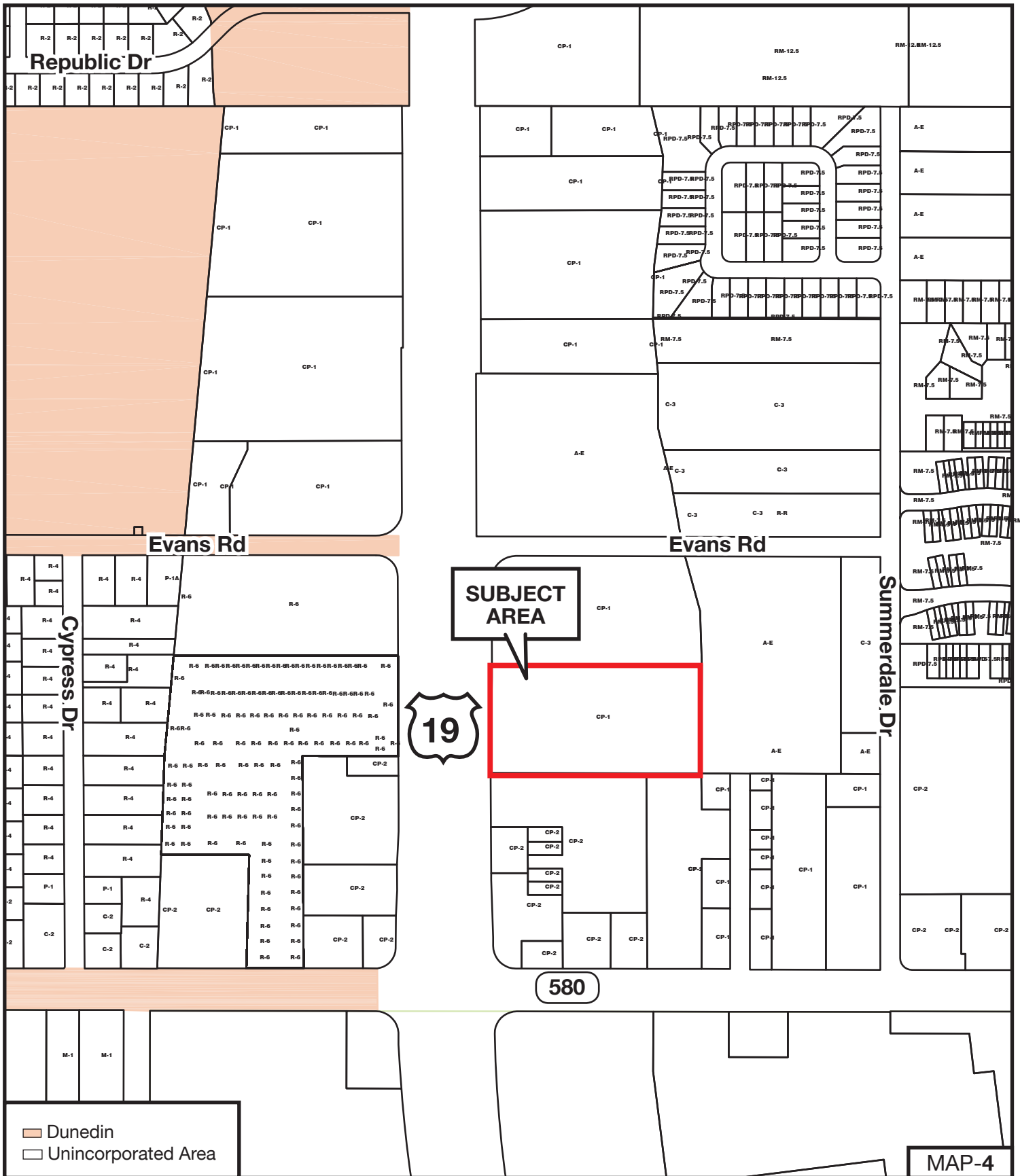


Z-2-1-16

Zoning From: CP-1, Commercial Parkway
To: CP-2, Commercial Parkway

Parcel I.D. 30/28/16/07218/000/1100
 Prepared by: Pinellas County Planning Department November 2015





SUBJECT AREA



580

Z-2-1-16

Zoning From: CP-1, Commercial Parkway
To: CP-2, Commercial Parkway

Parcel I.D. 30/28/16/07218/000/1100
 Prepared by: Pinellas County Planning Department November 2015



MAP-4