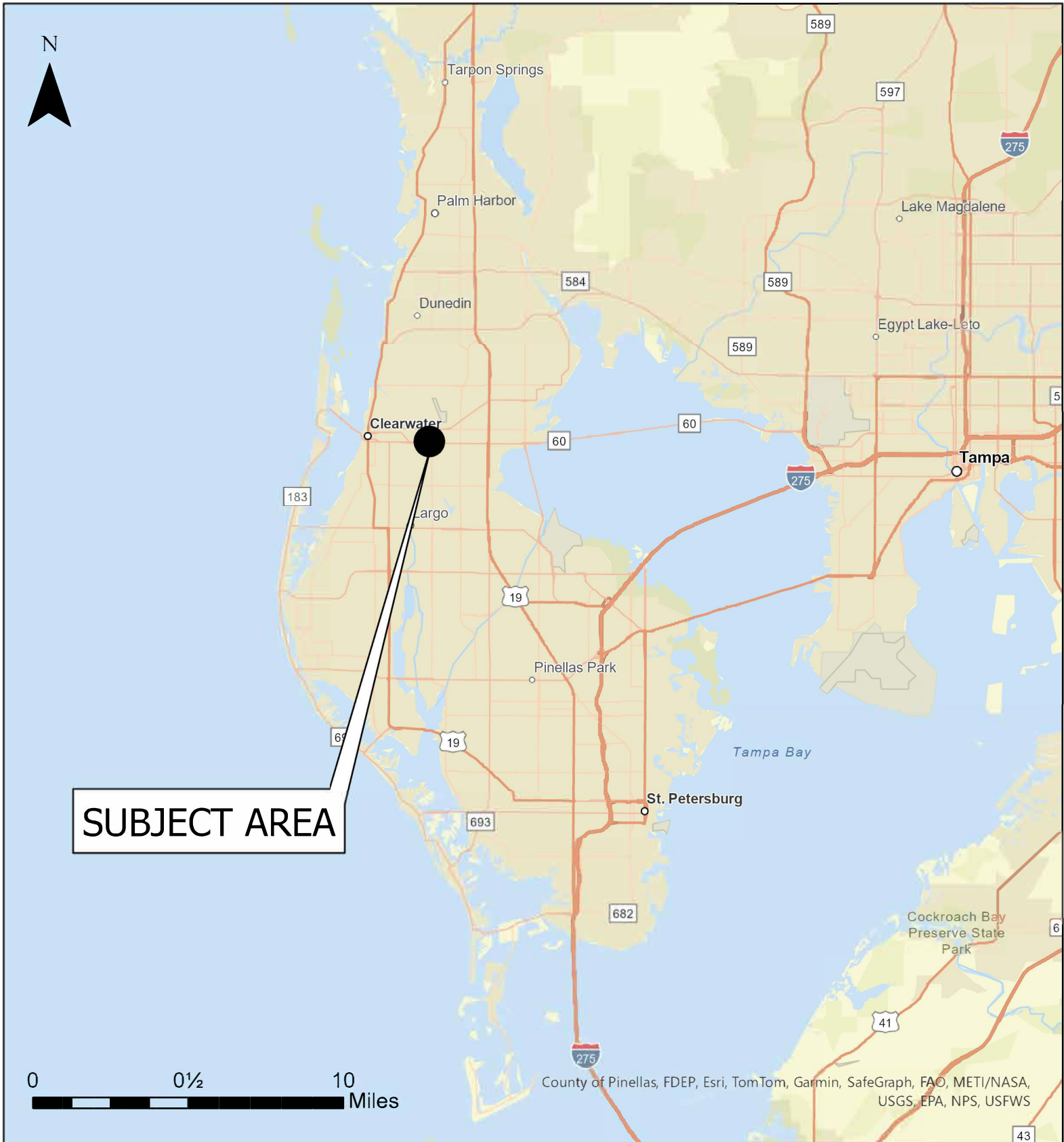


# Case CW24-17

## Map 1: Location Map



**JURISDICTION: Clearwater**

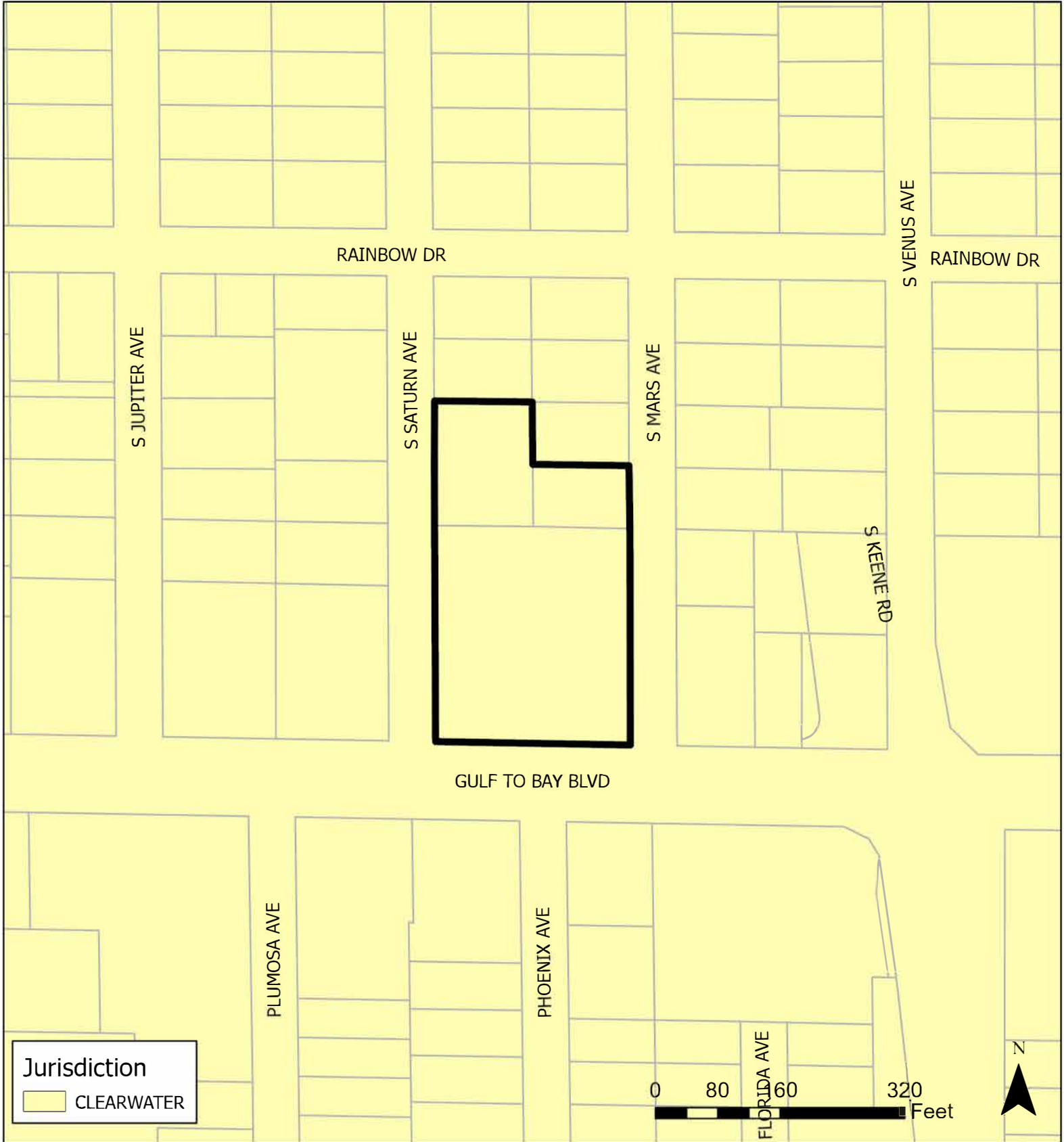
**AREA: 2.28 acres m.o.l.**

**FROM: Public/Semi-Public and Scenic/Noncommercial Corridor**

**TO: Retail & Services and Scenic/Noncommercial Corridor**

# Case CW24-17

## Map 2: Jurisdictional Map



**JURISDICTION: Clearwater**

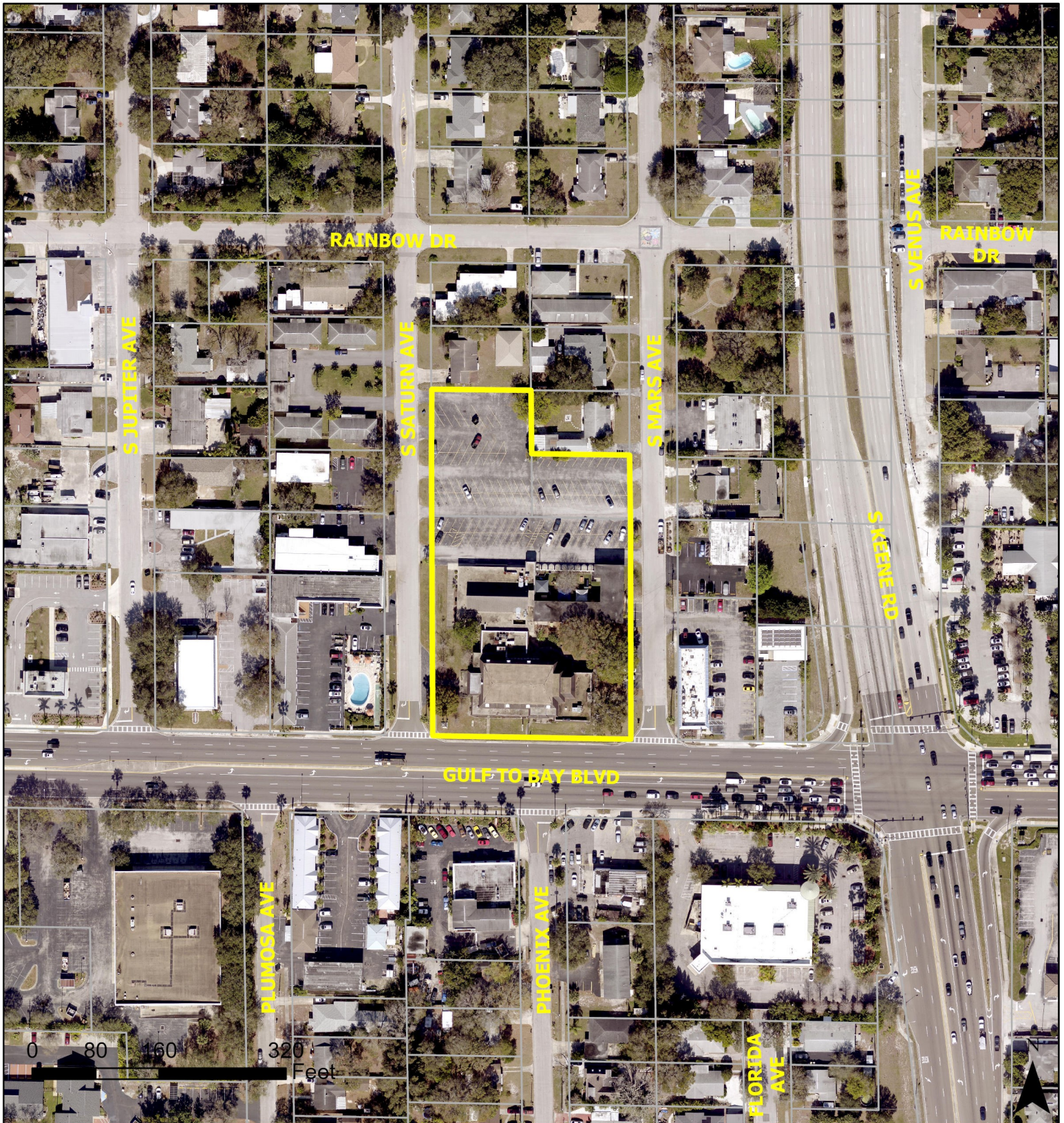
**FROM: Public/Semi-Public and Scenic/Noncommercial Corridor**

**AREA: 2.28 acres m.o.l.**

**TO: Retail & Services and Scenic/Noncommercial Corridor**

# Case CW24-17

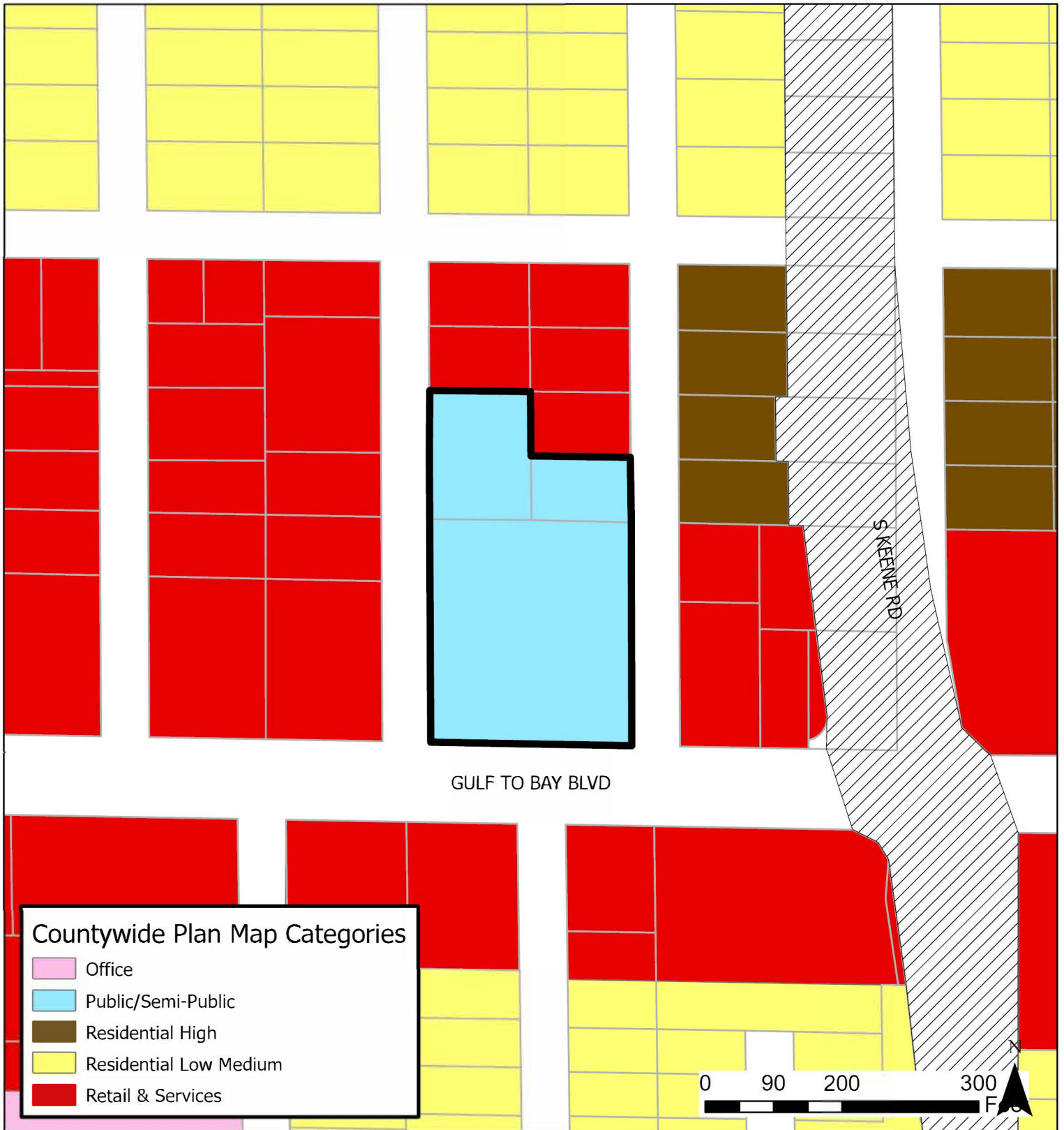
## Map 3: Aerial Map



**JURISDICTION:** Clearwater  
**AREA:** 2.28 acres m.o.l.

**FROM:** Public/Semi-Public and  
Scenic/Noncommercial Corridor

**TO:** Retail & Services and Scenic/Noncommercial Corridor

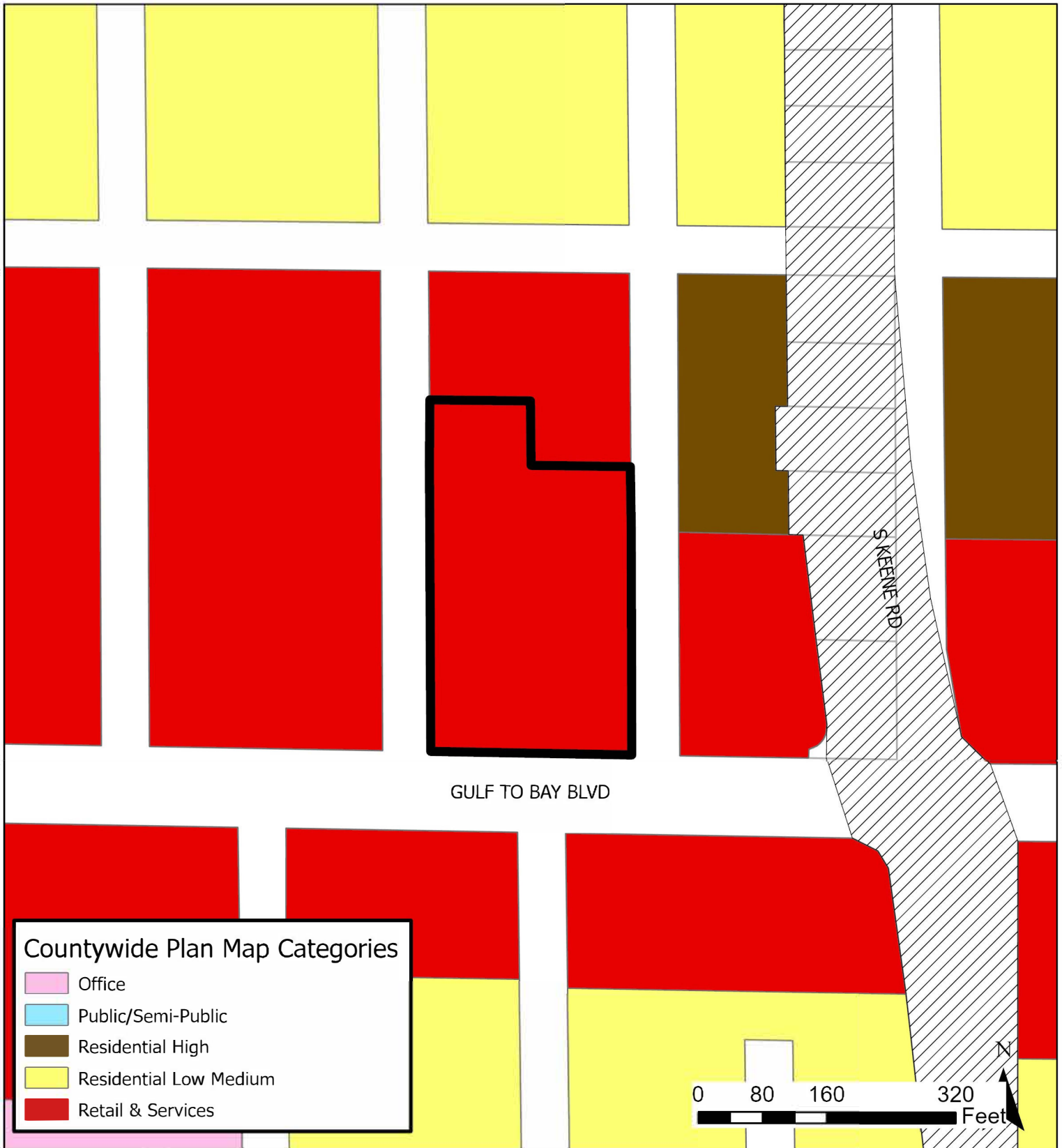


**JURISDICTION:** Clearwater

**AREA:** 2.28 acres m.o.l

**FROM:** Public/Semi-Public and Scenic/Noncommercial Corridor

**TO:** Retail & Services and Scenic/Noncommercial Corridor

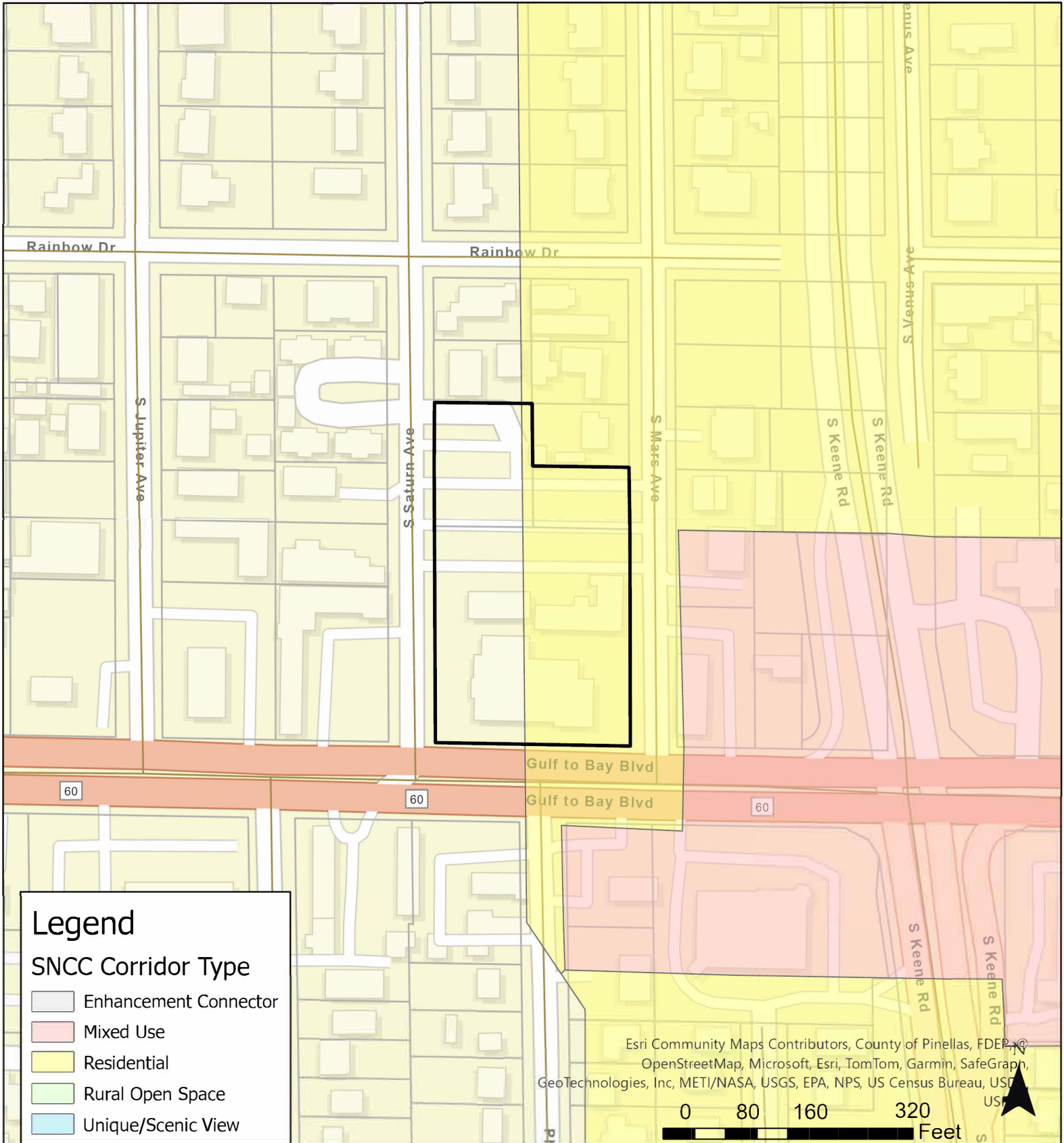


**JURISDICTION:** Clearwater

**AREA:** 2.28 acres m.o.l

**FROM:** Public/Semi-Public and Scenic/Noncommercial Corridor

**TO:** Retail & Services and Scenic/Noncommercial Corridor

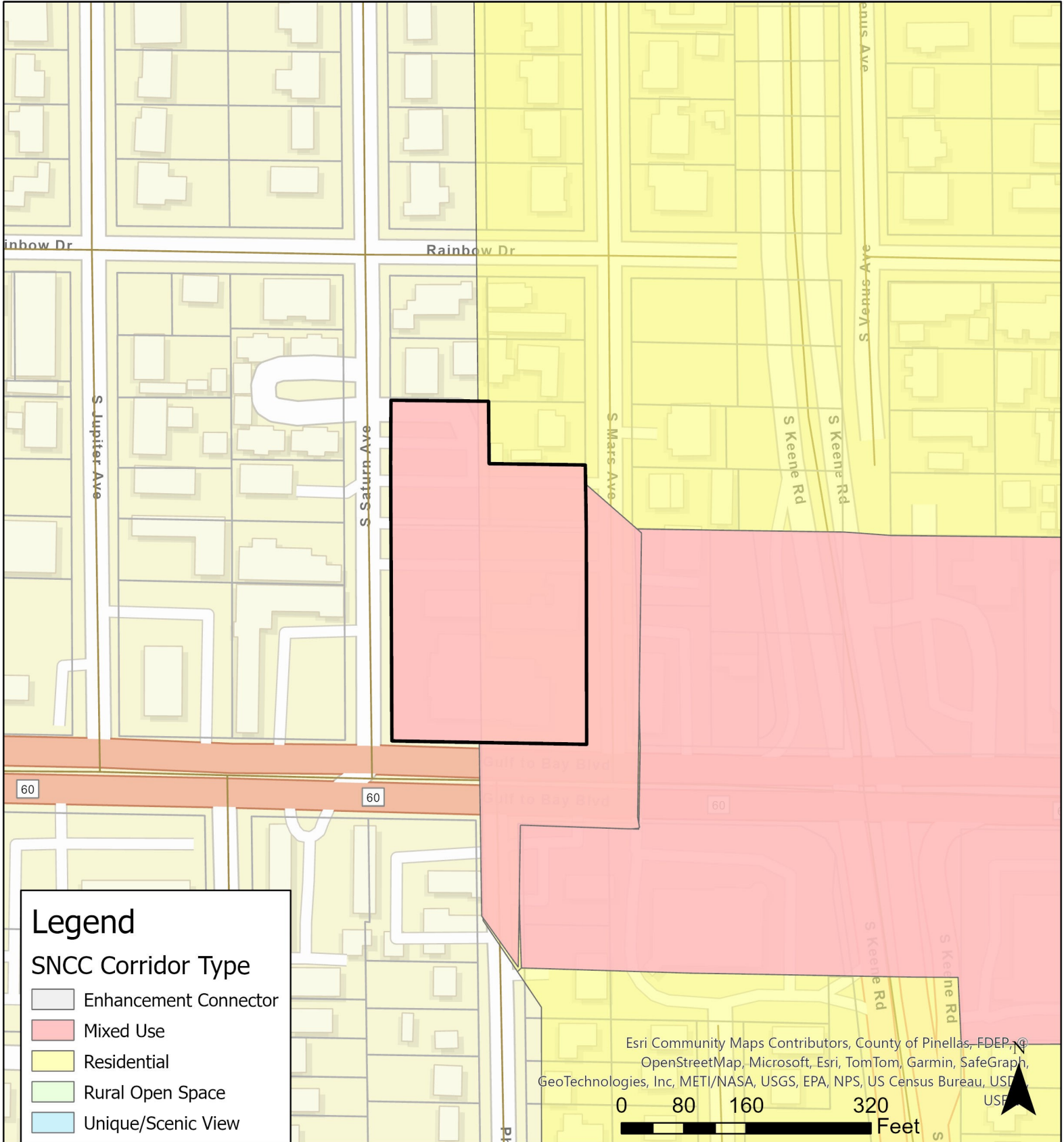


**JURISDICTION: Clearwater**

**FROM: Public/Semi-Public and Scenic/Noncommercial Corridor**

**AREA: 2.28 acres m.o.i.**

**TO: Retail & Services and Scenic/Noncommercial Corridor**



**JURISDICTION: Clearwater**

**FROM: Public/Semi-Public and Scenic/Noncommercial Corridor**

**AREA: 2.28 acres m.o.i.**

**TO: Retail & Services and Scenic/Noncommercial Corridor**