



TBRPC

TAMPA BAY REGIONAL
PLANNING COUNCIL

Tampa Bay Regional Planning Council Services

PINELLAS COUNTY BOARD OF COUNTY COMMISSIONERS' MEETING

Alana Todd - Principal Environmental Planner

October 2, 2025



Pinellas County Representative

Thank you for your leadership!

Commissioner René Flowers



TBRPC
TAMPA BAY REGIONAL
PLANNING COUNCIL



Mission Statement



To serve our citizens and member governments by providing a forum to foster communication, coordination, and collaboration in identifying and addressing needs regionally.

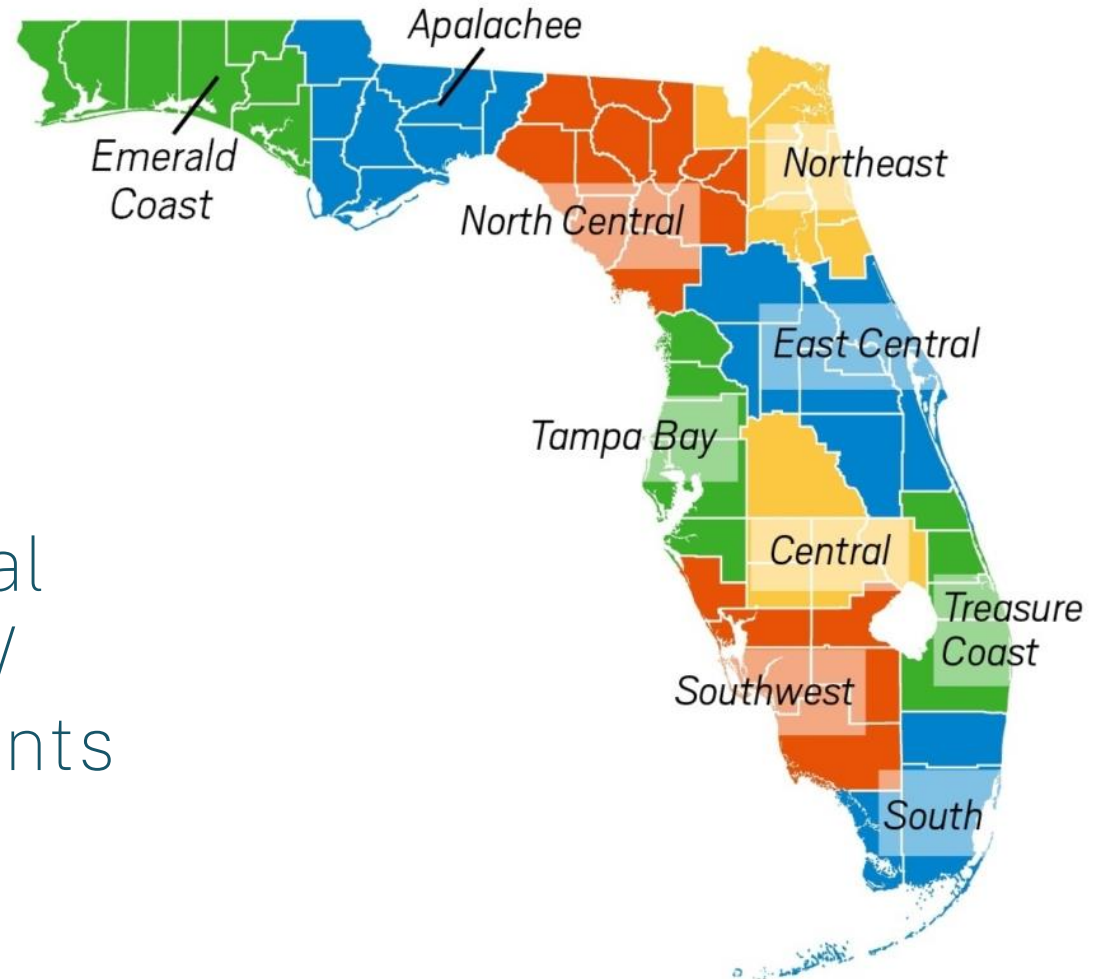


Florida Regional Councils Association



TBRPC
TAMPA BAY REGIONAL
PLANNING COUNCIL

One of Florida's 10 Regional
Planning Councils (RPCs) /
Special District Governments



2025 Officers

tbrpc.org/council



**Mayor Maureen
"Moe" Freaney**

Chair

City of Dunedin



**Commissioner
René Flowers**

Vice Chair

Pinellas County



**Commissioner
Rebecca Bays**

Secretary/Treasurer

Citrus County



**Mayor Woody
Brown**

Immediate Past
Chair

City of Largo

TBRPC Management

tbrpc.org/staff



Wren Krah

CP-PHR

Executive Director

Wren@tbrpc.org



Cara Serra

AICP, CFM

Planning
Director/Executive
Deputy Director

Cara@tbrpc.org



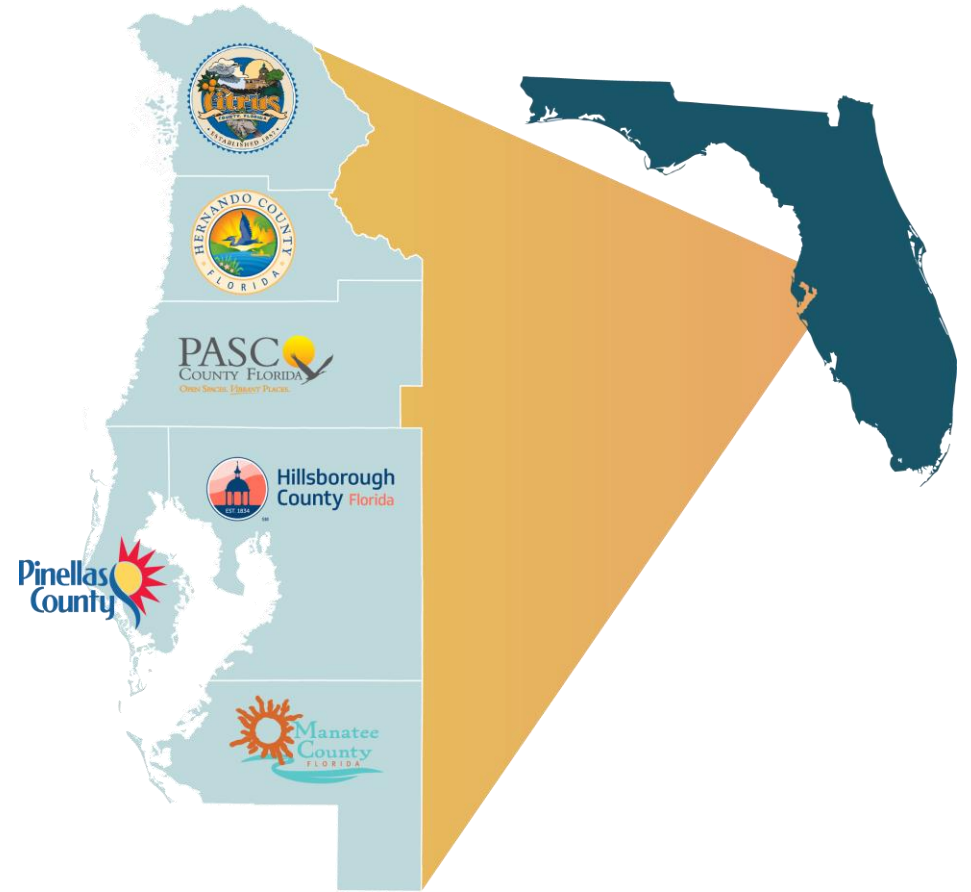
Maria Robles

Manager of
Administration/Public
Information

Maria@tbrpc.org

Convening the Region Since 1962!

- 6 Counties
- 23 Municipalities
- 13 Gubernatorial Appointees
- 3 Ex-Officios



Southwest Florida
Water Management District



Focus Areas

1. Economic Development
2. Emergency Preparedness
3. Environmental Planning
4. Planning Technologies
5. Resiliency Planning



What We Do

1. Regional Government Liaison Program
2. Planning Support & Technical Services
3. Regional Convening – Committees & Initiatives



GOVERNMENT LIAISON PROGRAM



GROWING PARTNERSHIPS

Now providing technical assistance to a Member Government we had not yet directly assisted – Madeira Beach.



DEEPENING UNDERSTANDING

Improved understanding among staff of their liaison communities and local government processes.



REGIONAL KNOWLEDGE

Acquired information about the environmental, growth management, and other issues taking priority throughout our region.



COMMUNITY IDENTITY

Staff have attended 40+ community events to understand each community's unique character better.

Meet Your Liaison

Alana Todd

Principal Environmental Planner



alana@tbrpc.org



2. Planning Support & Technical Services

Public agencies can directly contract with the TBRPC without public procurement; cost-effective when time, internal expertise, or sources of funding are limited.

Technical Tools:



Available services:

- Training and Capacity Building
- Research and Analysis
- Policy and Plan Development
- Local Mitigation Strategy Updates
- Community Rating System Support
- Hazard Vulnerability Assessments
- Greenhouse Gas Analysis
- Scenario Planning
- 3D Visualization
- Economic and Fiscal Impact Analysis
- GIS Data Analysis, Mapping, and Applications
- Branding and Graphic Design



URBAN DESIGN & 3D VISUALIZATION

Modeling, Rendering, Animation,
Data Visualization, Brand Development,
Graphic and Document Design



US 19

COUNTRYSIDE BLVD

VILLAGE DRIVE

CMX CINEMAS
EXISTING ANCHOR

WHOLE FOODS MARKET
EXISTING ANCHOR

MACY'S
EXISTING ANCHOR

COUNTRYSIDE MALL
INDOOR SHOPPING CENTER

DILLARD'S
EXISTING ANCHOR

JCPENNEY
EXISTING ANCHOR

STATE ROAD 580





URBAN DESIGN & 3D VISUALIZATION

Modeling, Rendering, Animation,
Data Visualization, Brand Development,
Graphic and Document Design



US 19

COUNTRYSIDE BLVD

VILLAGE DRIVE

CMX CINEMAS
EXISTING ANCHOR

WHOLE FOODS MARKET
EXISTING ANCHOR

MACY'S
EXISTING ANCHOR

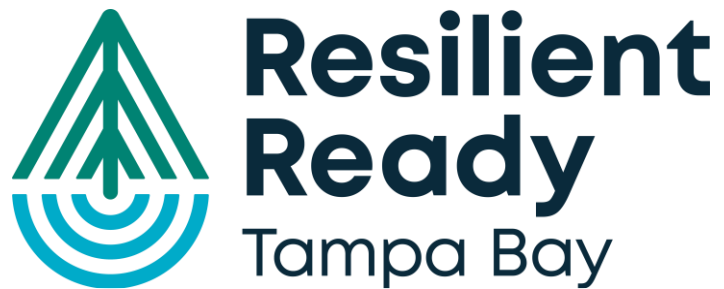
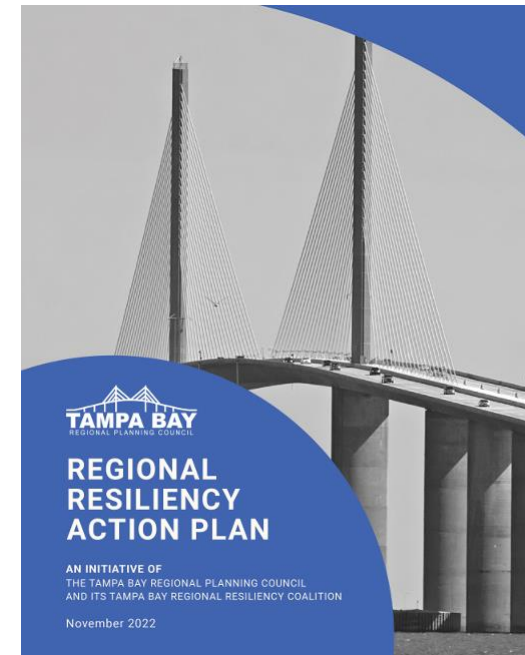
COUNTRYSIDE MALL
INDOOR SHOPPING CENTER

DILLARD'S
EXISTING ANCHOR

STATE ROAD 580



Recent Highlights



Building resilience through collaboration



● PLAN'S AIM

This plan will illustrate flood risks for the region's vulnerable communities and habitats, proposing a coordinated suite of restoration and (non)structural flood reduction projects to support adaptation.

THE TBCMP WILL PROVIDE A ROADMAP FOR FLOOD RISK PROJECT FUNDING AND IMPLEMENTATION, BUILDING UPON ONGOING WORK BY THE TAMPA BAY REGIONAL PLANNING COUNCIL (TBRPC) AND PARTNERS

CoastalTampaBay.org



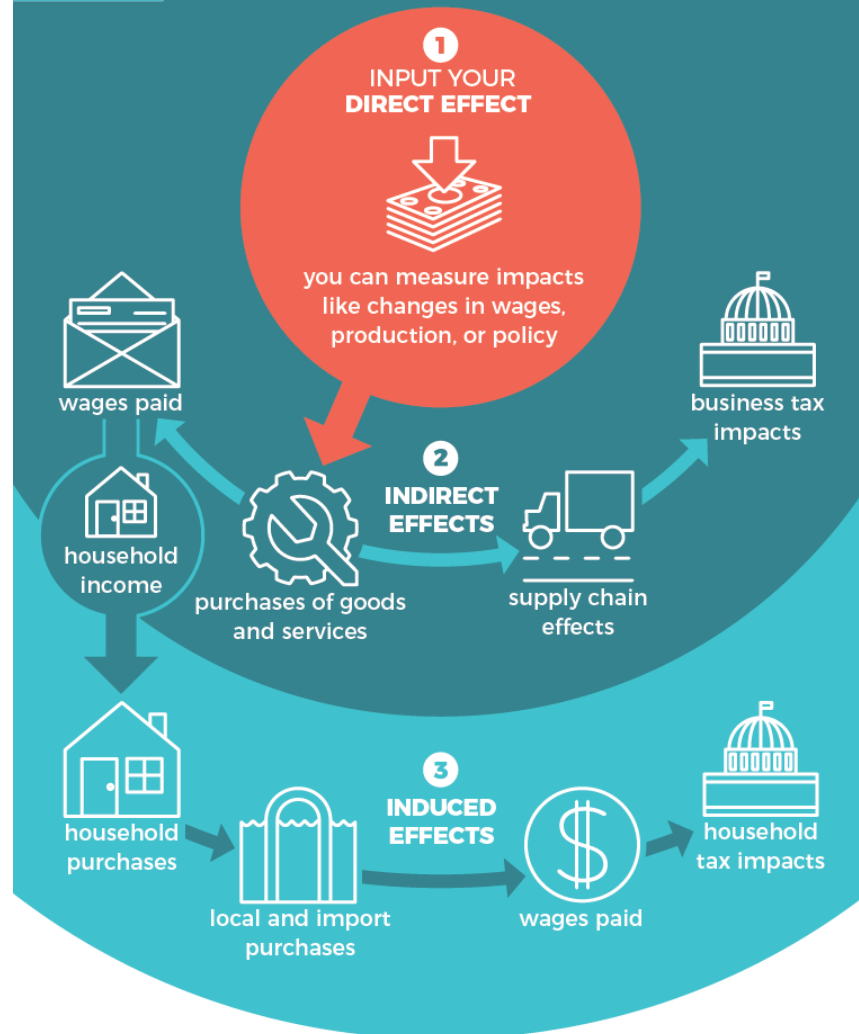


ECONOMIC ANALYSIS

Economic and Fiscal Impact Analysis with IMPLAN® and REMI PI+®, Cost-Benefit Analysis, Public ROI in Urban Design

IMPLAN

Basic calculation process

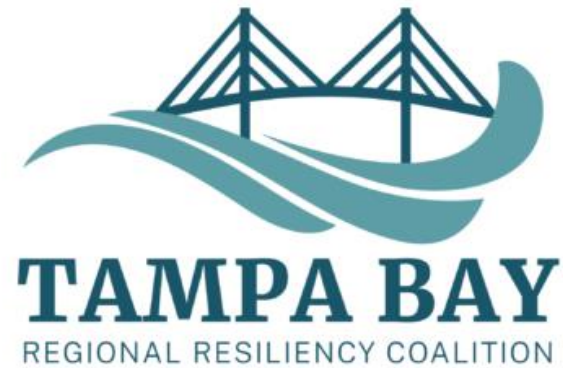


2023

ECONOMIC VALUATION OF TAMPA BAY



3. Regional Convening – Committees & Initiatives



STORMWATER EDUCATION
COMMITTEE



TAMPA BAY ECONOMIC
DEVELOPMENT DISTRICT



Post Hurricane Impacts and Recovery Session & Resources



Disaster Recovery Hub

Managed by the Tampa Bay Regional Planning Council

[Tampa Bay Regional Inform...](#) [Tampa Bay Regional Inform...](#) [Disaster Recovery Hub](#)

Introduction

- ▶ Welcome & Assistance
- ▶ Hub Contents
- ▶ Hub Suggestions
- ▶ Upcoming Events & Training

Hurricane Tracking

A screenshot of the National Hurricane Center (NHC) website. The header includes the NHC logo and the text "NATIONAL HURRICANE CENTER and CENTRAL PACIFIC HURRICANE CENTER". Below the header, there are navigation links for "ANALYSES & FORECASTS", "DATA & TOOLS", "EDUCATIONAL RESOURCES", "ARCHIVES", "ABOUT", and "SEARCH". A section titled "Top News of the Day" lists several items, including "NHC issuing advisories for the Eastern Pacific on TS Mario", "Marine warnings are in effect for the Eastern Pacific", "Key messages regarding Tropical Storm Mario (in Spanish: Furiosas Claves)", "NOAA prediction remains on track for above-normal Atlantic hurricane season", and "National Hurricane Center Products and Services Update for 2025 Hurricane Season". At the bottom, there are tabs for "Central Pacific", "Eastern Pacific", and "Atlantic".

DEBBY, HELENE, AND MILTON: POST HURRICANE IMPACTS AND RECOVERY SESSION

Summary Report – February 2025

Tampa Bay Regional Planning Council

Abstract

On December 2, 2024, the Tampa Bay Regional Planning Council (TBRPC) and the University of South Florida (USF) hosted the Debby, Helene, and Milton: Hurricane Impacts and Recovery Session at the Patel College of Global Sustainability in Tampa, Florida. The morning session included an in-depth panel discussion with the region's County Emergency Management Directors, and local, regional, state, and federal agencies reflecting on the impacts and response to recent storms, best practices, and lessons learned. Afternoon breakout sessions were held with a deeper focus into hazardous material and debris management, water system impacts, economic and supply chain issues, and post-disaster redevelopment. These sessions assessed the region's impacts, current recovery status, unmet needs, and long-term recovery strategies for future resiliency and preparedness in the Tampa Bay region. Event speaker highlights included Congresswoman Kathy Castor, USF President Rhea Law, and TBRPC Executive Director Wren Krahl.

Recording of Event: [2024 Post Hurricane Recovery Session](#)



Next TBRPC Meeting

Monday, October 13, 2025
10:00 AM

4000 Gateway Centre Blvd. Suite 100
Pinellas Park, FL 33782





TBRPC

TAMPA BAY REGIONAL
PLANNING COUNCIL

Thank you!

TBRPC.ORG

Alana Todd, Alana@tbrpc.org

October 2, 2025

