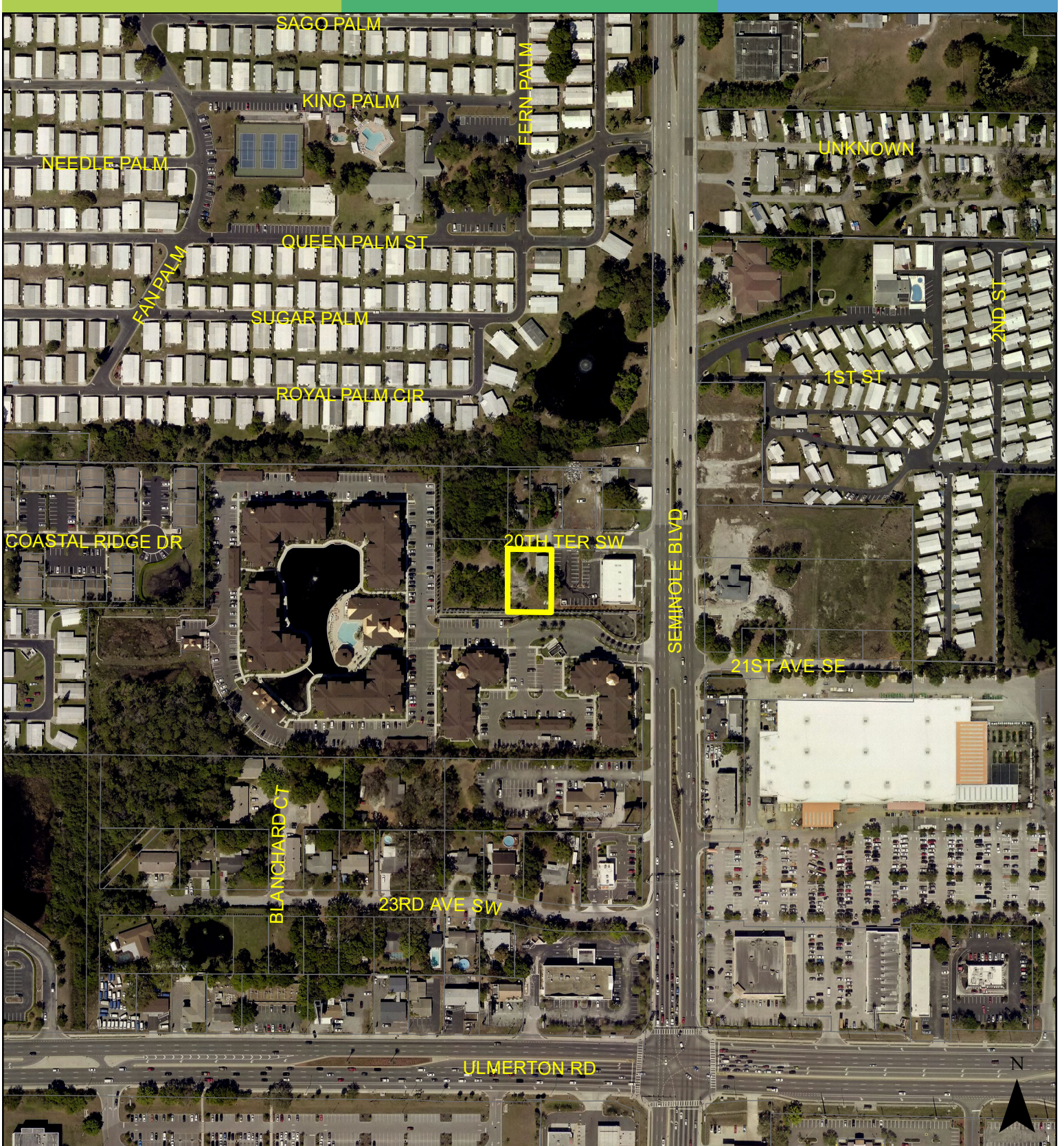


Case CW22-07

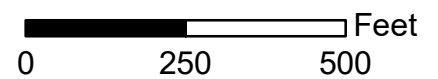
Map 3: Aerial Map

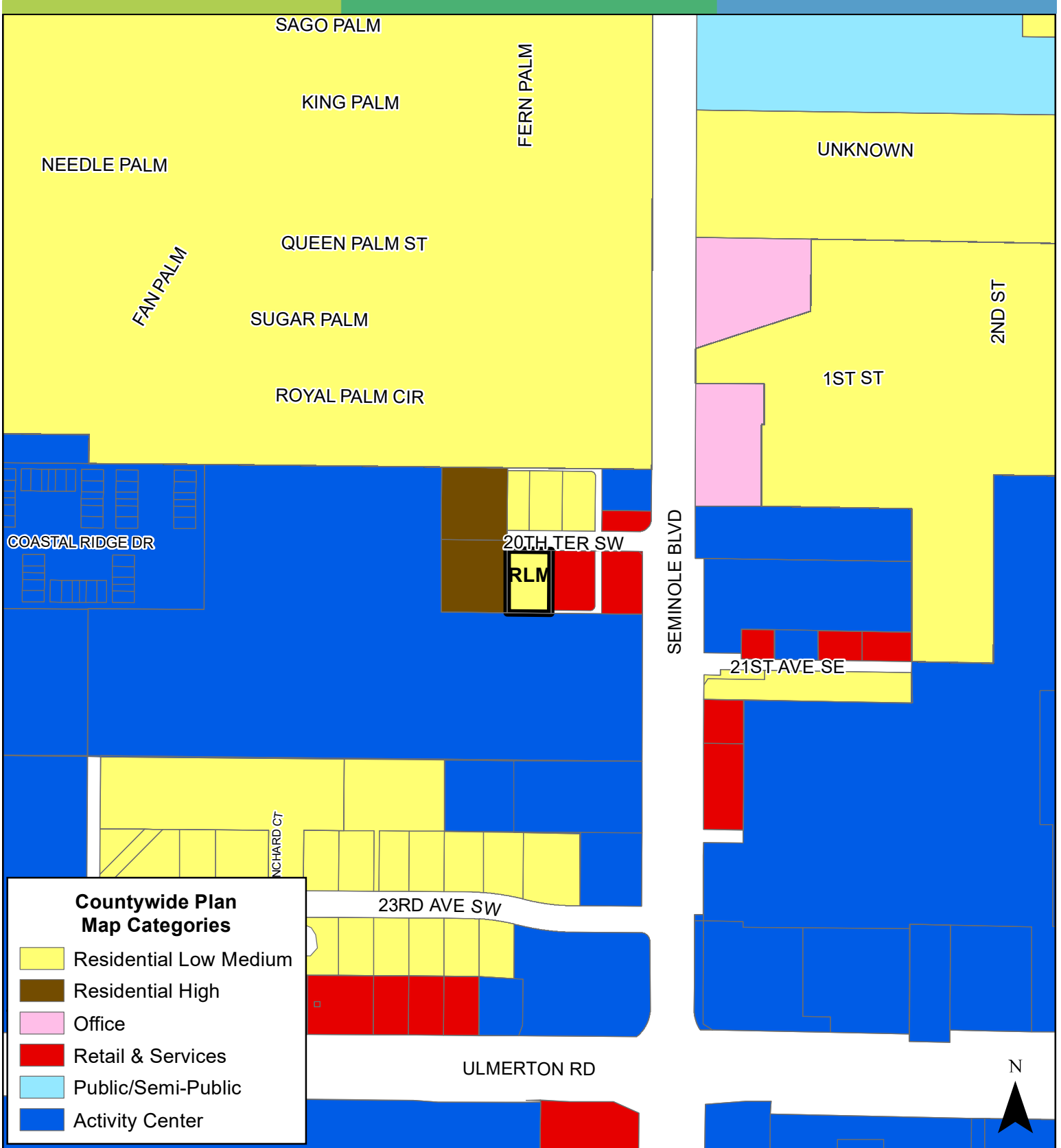


JURISDICTION: Pinellas County **FROM:** Residential Low Medium

AREA: 0.33 Acres

TO: Retail & Services

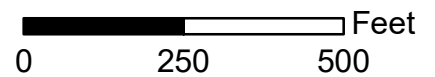


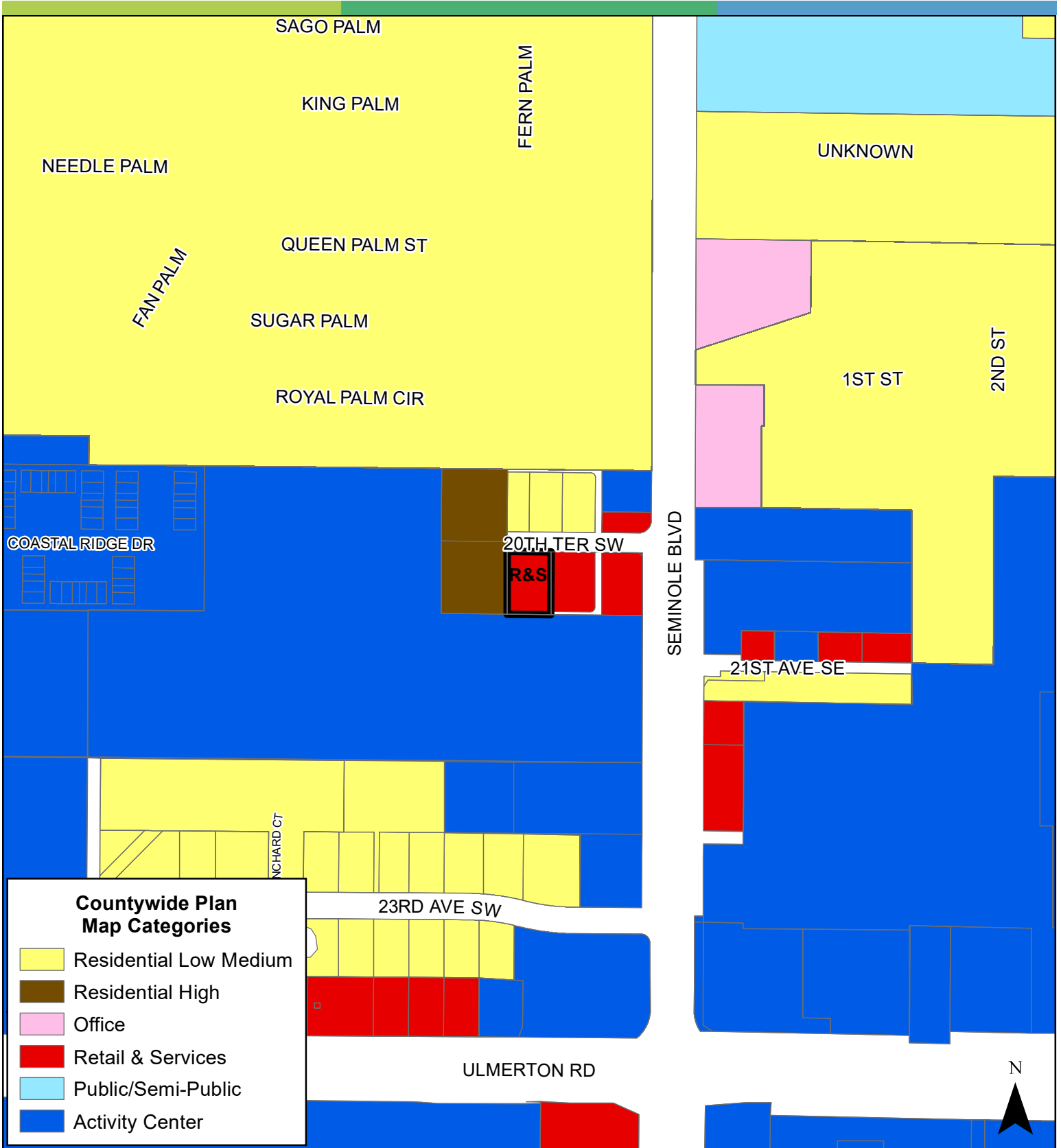


JURISDICTION: Pinellas County **FROM:** Residential Low Medium

AREA: 0.33 Acres

TO: Retail & Services





JURISDICTION: Pinellas County **FROM:** Residential Low Medium

AREA: 0.33 Acres

TO: Retail & Services

