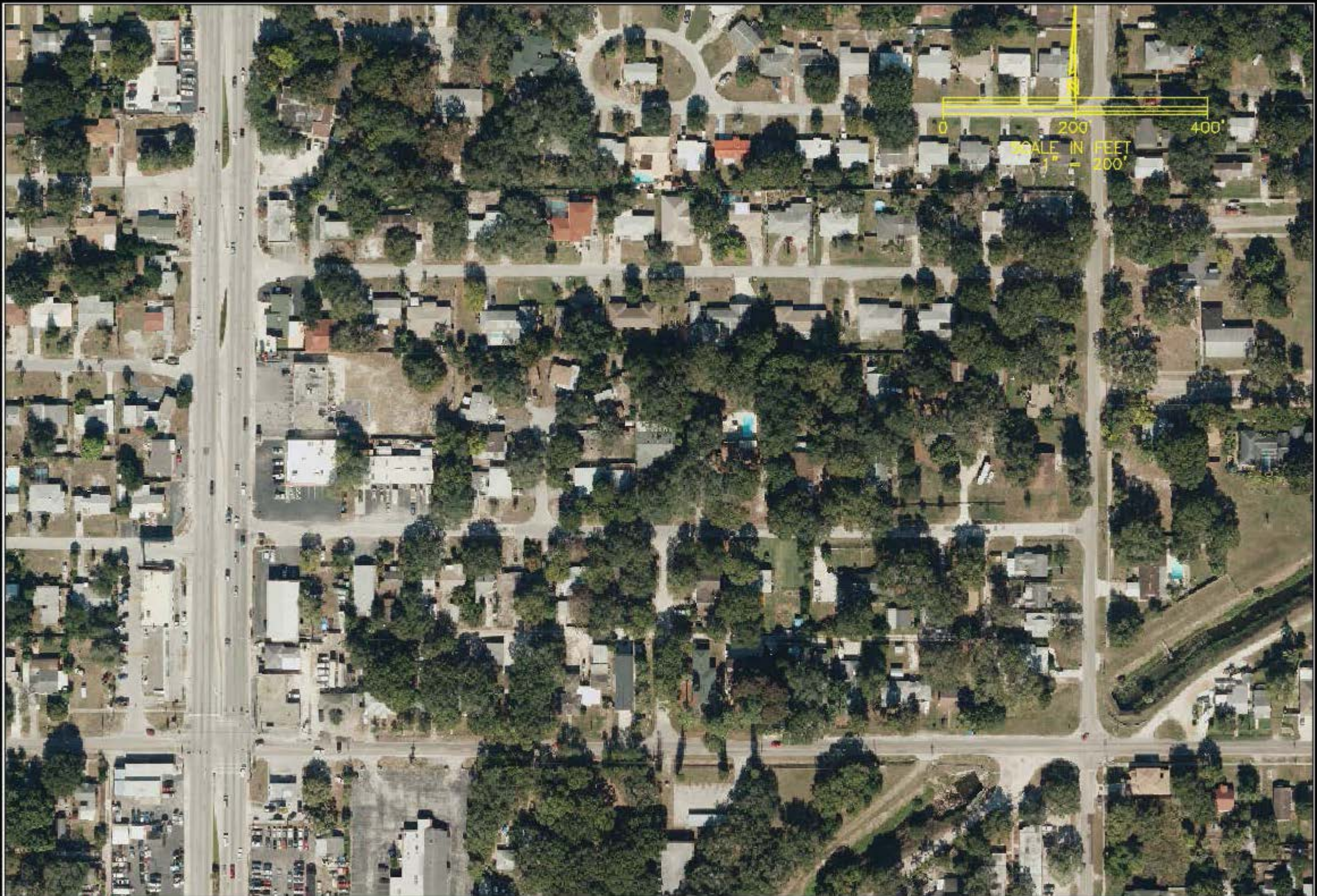




**47TH AVE. N FROM 49TH ST. N. TO 46TH ST. N.
LOCATION MAP**





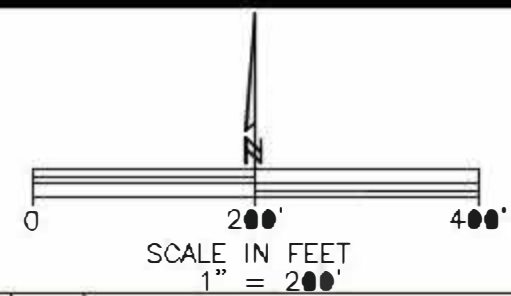
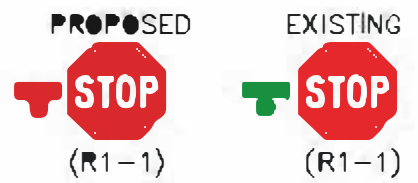
PINELLAS COUNTY, FLORIDA
PUBLIC WORKS TRAFFIC ENGINEERING
8821 US HIGHWAY 19 N
CLEARWATER, FLORIDA 33766

47TH AVENUE NORTH
from: 49TH STREET N
to: 46TH STREET N

AERIAL IMAGE

DRAWN:	AET
DATE:	Nov. 17, 2015
SR:#	20150236
SIGN ZONE	24

- 21 ENDORSE
- DOES NOT ENDORSE
- CERTIFIED MAIL ACCEPTED - BUT NO VOTE
- 03 CERTIFIED MAIL RETURNED
- 05 NON-ELIGIBLE (MULTI - PROPERTIES OWNER AND NON-RESIDENTIAL PROPERTIES)
- VOTING AREA



PINELLAS COUNTY, FLORIDA
 PUBLIC WORKS TRAFFIC ENGINEERING
 22211 US HIGHWAY 19 N
 CLEARWATER, FLORIDA 33765

47TH AVENUE NORTH
 from: 49TH STREET N
 to: 46TH STREET N

ENDORSEMENT MAP

DRAWN: AET
DATE: Jan. 05, 2016
SR:# 20150236
SIGN ZONE 24