

Surrounding Counties

**ZON-20-6**  
**Location Map**

**Zoning**  
**From:** C-2, General Commercial & Services & R-4, One, Two & Three Family Residential  
**To:** C-2, General Commercial & Services



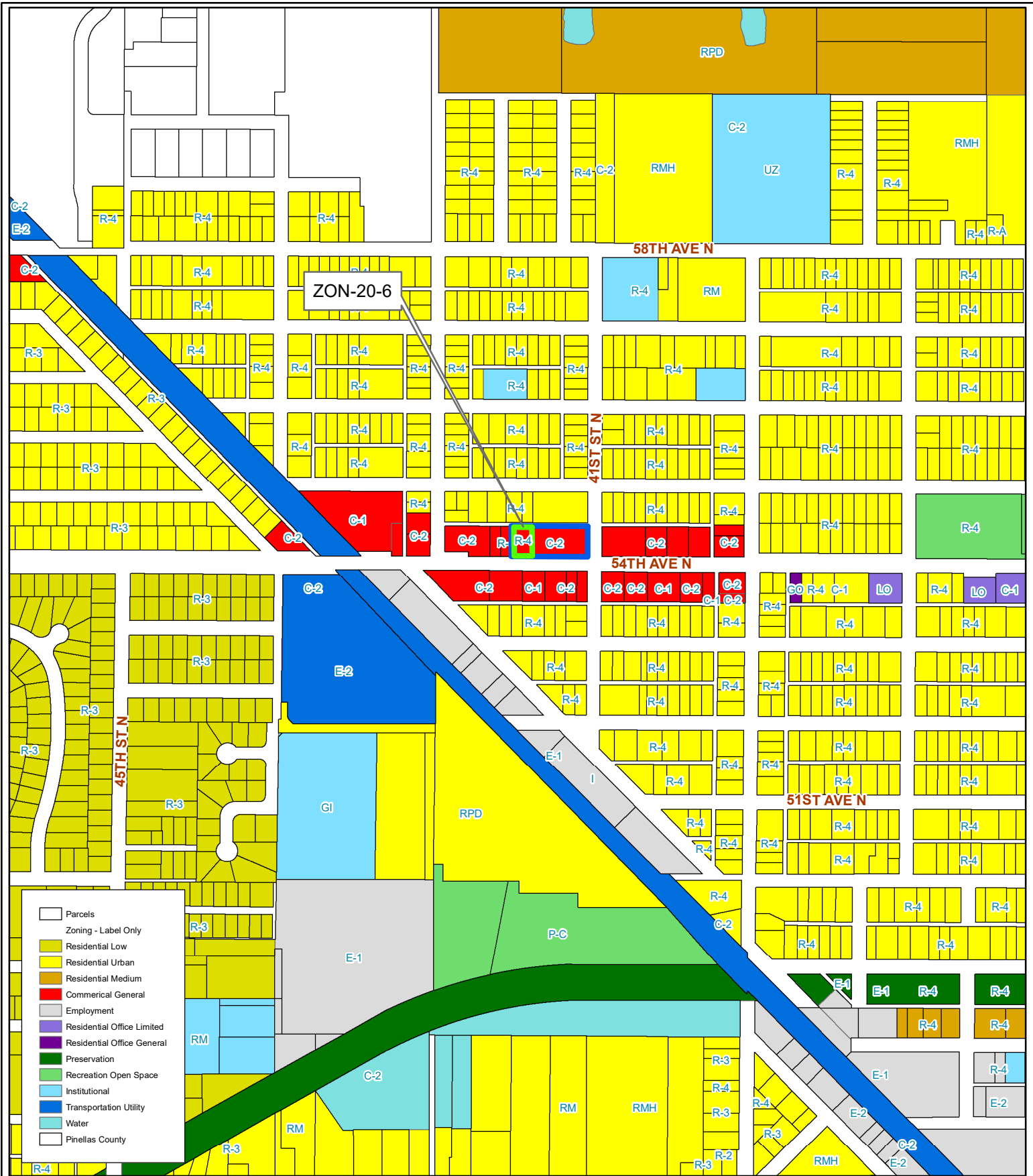
A Portion of Parcel 34/30/16/64746/001/0040

Prepared by: Pinellas County Planning Department



Date: 5/28/2020

1 inch = 4.5 miles



- Parcels
- Zoning - Label Only
- Residential Low
- Residential Urban
- Residential Medium
- Commercial General
- Employment
- Residential Office Limited
- Residential Office General
- Preservation
- Recreation Open Space
- Institutional
- Transportation Utility
- Water
- Pinellas County

## ZON-20-6

### Current Zoning

### Zoning

**From:** C-2, General Commercial & Services & R-4, One, Two & Three Family Residential

**To:** C-2, General Commercial & Services

A Portion of Parcel 34/30/16/64746/001/0040

Prepared by: Pinellas County Planning Department

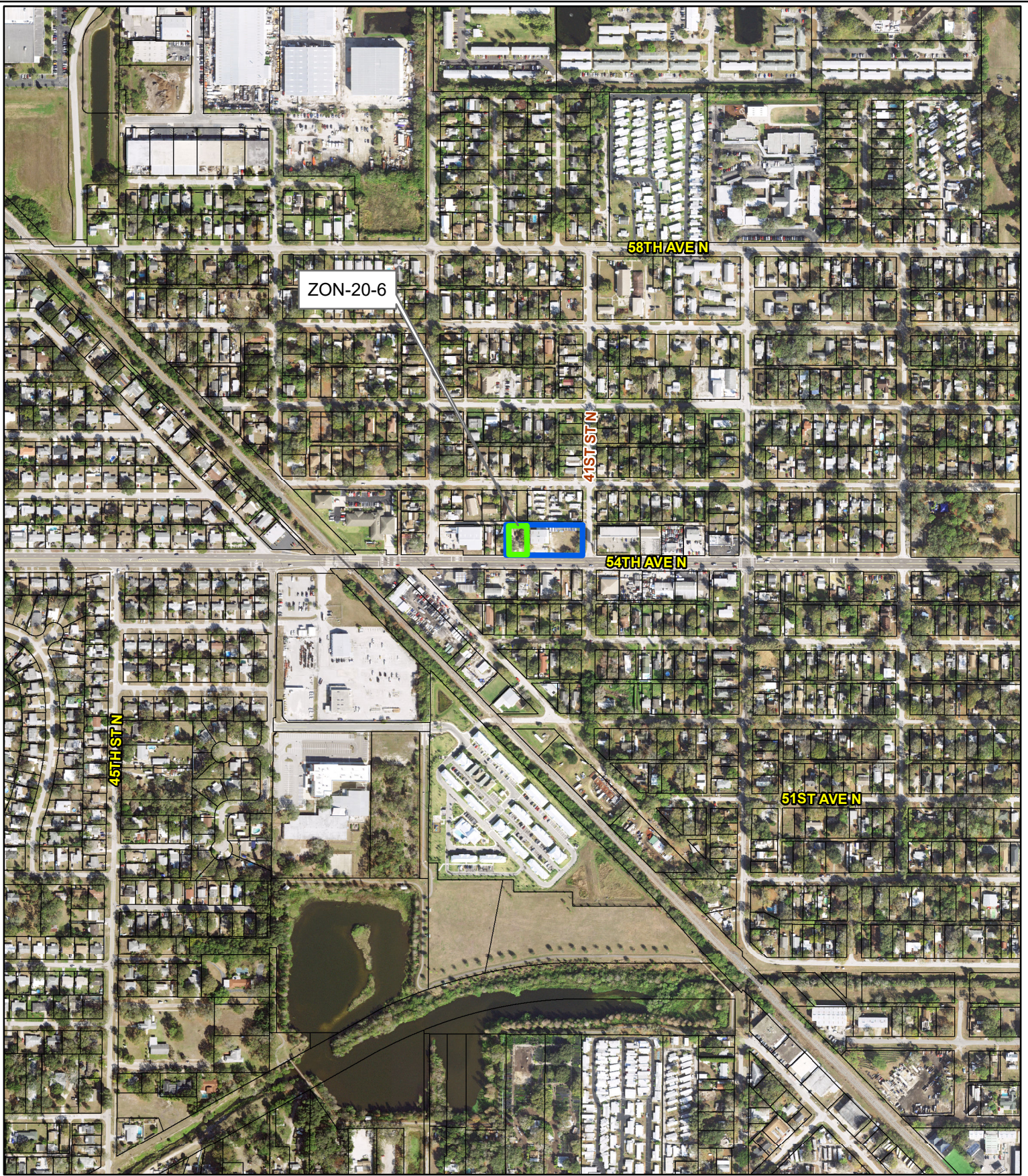


Date: 5/28/2020



1 inch = 0.1 miles





# ZON-20-6

## Aerial Map

### Zoning

**From:** C-2, General Commercial & Services & R-4, One, Two & Three Family Residential

**To:** C-2, General Commercial & Services



A Portion of Parcel 34/30/16/64746/001/0040

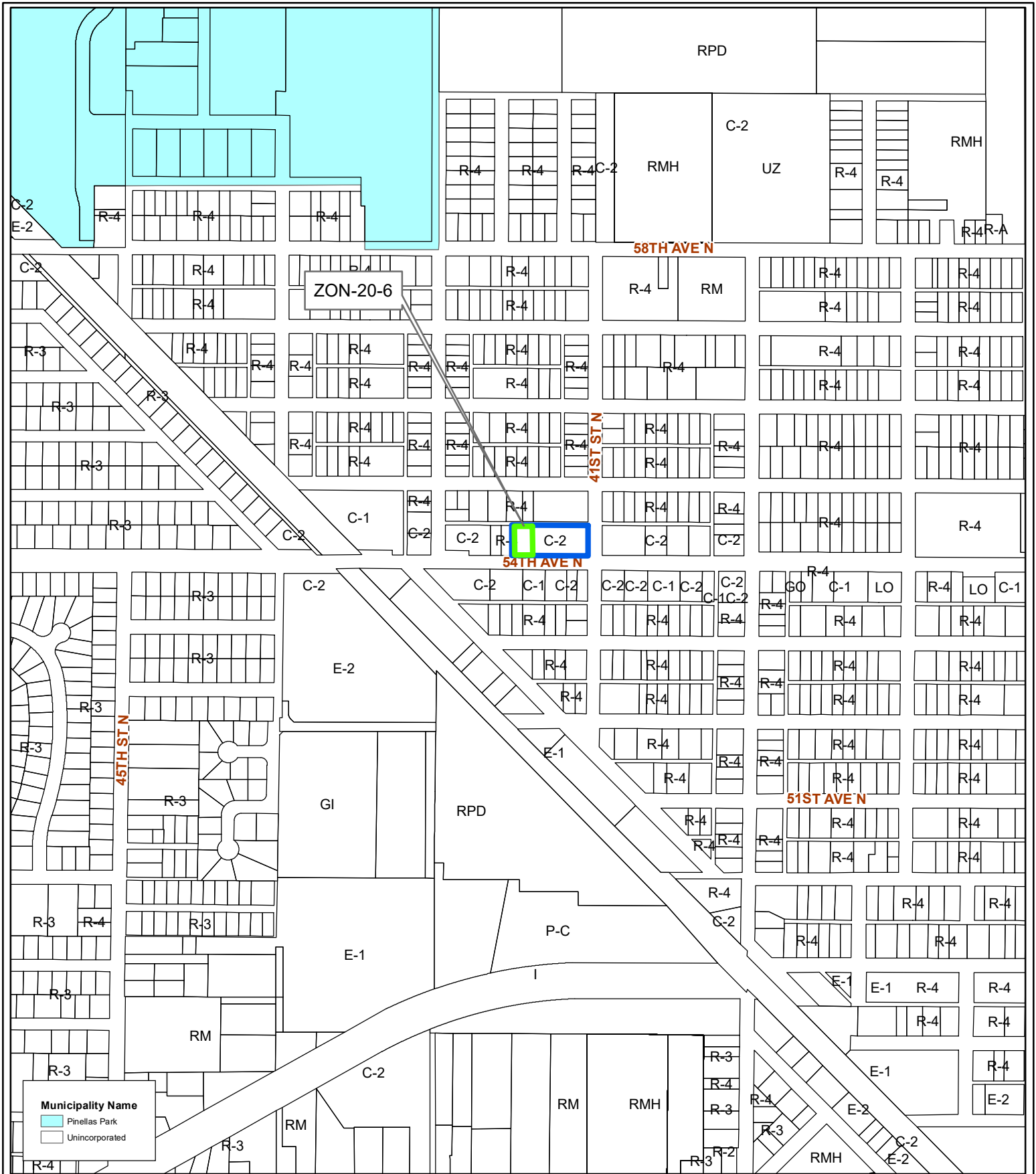
Prepared by: Pinellas County Planning Department



Date: 5/28/2020

1 inch = 0.1 miles





# ZON-20-6

## Municipal Map

### Zoning

**From:** C-2, General Commercial & Services & R-4, One, Two & Three Family Residential

**To:** C-2, General Commercial & Services



A Portion of Parcel 34/30/16/64746/001/0040

Prepared by: Pinellas County Planning Department



Date: 5/28/2020

1 inch = 0.1 miles



# ZON-20-6

## Proposed Zoning

### Zoning

**From:** C-2, General Commercial & Services & R-4, One, Two & Three Family Residential

**To:** C-2, General Commercial & Services

A Portion of Parcel 34/30/16/64746/001/0040

Prepared by: Pinellas County Planning Department



Date: 5/28/2020



1 inch = 0.1 miles