

SKETCH AND LEGAL DESCRIPTION

PROPOSED VACATION OF UTILITY, SEWER, AND POSSIBLE UNRECORDED EASEMENTS WITHIN THE FOLLOWING DESCRIBED STRIP OF LAND:

THE NORTH 5 FEET OF LOTS 15 THRU 22, AND THE SOUTH 5 FEET OF LOTS 23 THRU 30, KEN-TRE ADDITION TO PINELLAS PARK, FLA., ACCORDING TO THE PLAT THEREOF, RECORDED IN PLAT BOOK 15, PAGE 21, PUBLIC RECORDS OF PINELLAS COUNTY, FLORIDA.

EASEMENTS PROPOSED TO BE VACATED:

THREE FOOT SEWER EASEMENT AS SET FORTH ON THE PLAT OF KEN-TRE ADDITION TO PINELLAS PARK, FLA., ACCORDING TO THE PLAT THEREOF, RECORDED IN PLAT BOOK 15, PAGE 21. (AS TO LOTS 15 THRU 22 AND 23 THRU 30)

SEWER EASEMENT RECORDED IN OFFICIAL RECORDS BOOK 1384, PAGE 61. (AS TO LOT 21)

SEWER EASEMENT RECORDED IN OFFICIAL RECORDS BOOK 1384, PAGE 63. (AS TO LOT 24 AND 25)

SEWER EASEMENT RECORDED IN OFFICIAL RECORDS BOOK 1384, PAGE 65. (AS TO LOT 19 AND 20)

SEWER EASEMENT RECORDED IN OFFICIAL RECORDS BOOK 1384, PAGE 68. (AS TO LOT 22)

SEWER EASEMENT RECORDED IN OFFICIAL RECORDS BOOK 1384, PAGE 69. (AS TO LOT 23)

POSSIBLE UNRECORDED SEWER EASEMENT(S) IN FAVOR OF SOUTH CROSS BAYOU SANITARY DISTRICT OVER ACROSS THE REAR FIVE FEET OF LOTS 15 TO 18 AND 26 TO 30, TO CONNECT WITH SEWER EASEMENTS RECORDED IN OFFICIAL RECORDS BOOK 1384, PAGES 61, 63, 65, 68, AND 69.

Reviewed by: CH SZ
Date: 11-15-16
SFN # 501-1514

REVISED: NOVEMBER 7TH, 2016
PREPARED: JANUARY 4TH, 2016

THIS IS NOT A SURVEY

Survey was prepared with the benefit of title search commitment No. 5359768 written by Chicago Title Insurance Company, dated 6/14/15

NOTE: Sketch and Legal Description not valid without the signature and the original raised seal of a Florida Licensed Surveyor and Mapper.

Job Number
8501-158
DWN
JM

I hereby certify that the sketch and Legal Description represented hereon meet the requirements of Chapter 5J-17.052, Florida Administrative Code.

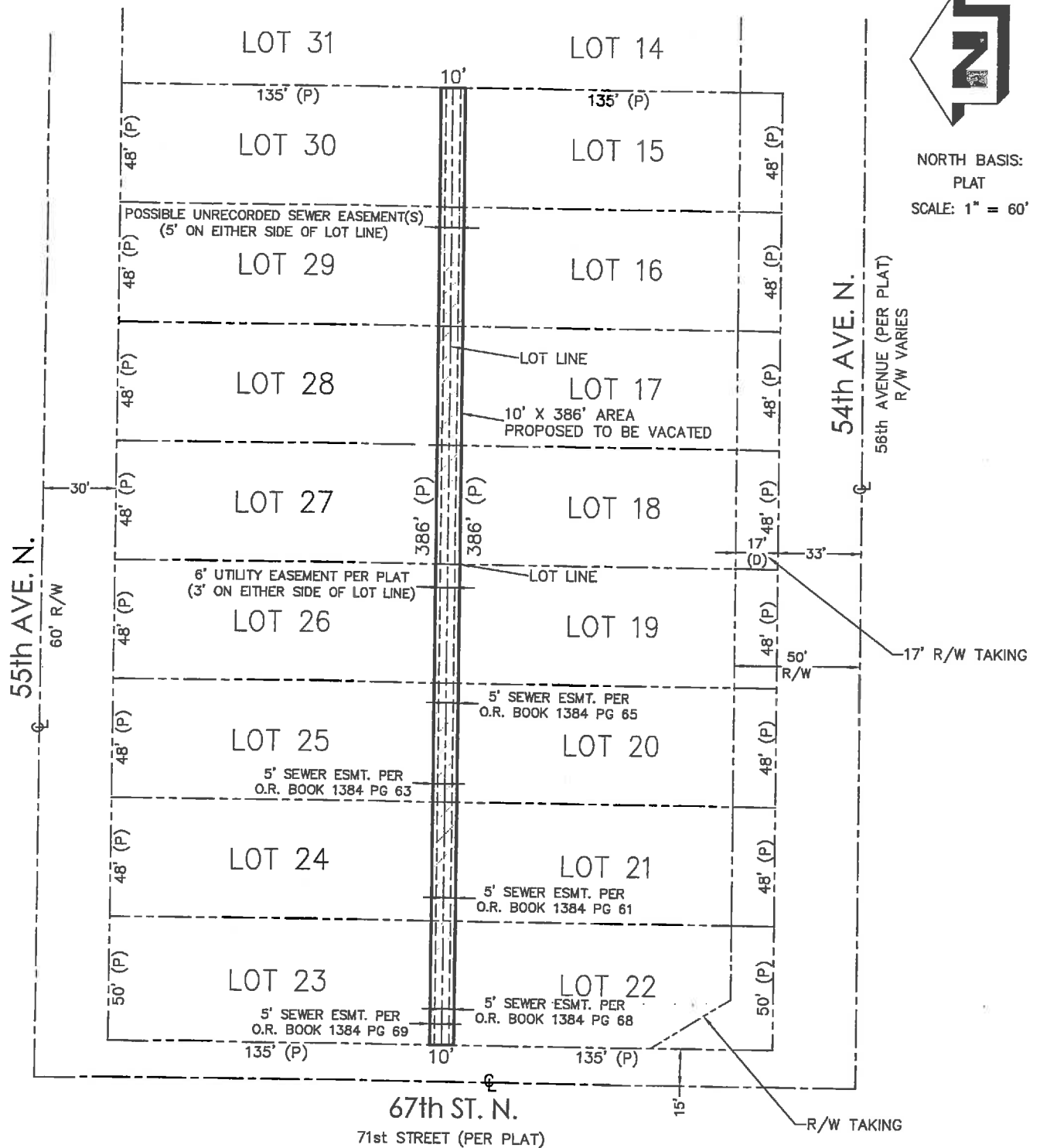

JOHN C. BRENDLA
Florida Surveyor's Registration No. 1269
Certificate of Authorization No. LB 760

Prepared by:
JOHN C. BRENDLA & ASSOCIATES, INC.
CONSULTING ENGINEERS AND LAND SURVEYORS
4015 82nd Avenue North
Pinellas Park, Florida 33781
phone (727) 576-7546 ~ fax (727) 577-9932

SECTION 31, TOWNSHIP 30S, RANGE 16E



NORTH BASIS:
PLAT
SCALE: 1" = 60'



THIS IS NOT A SURVEY

Job Number
8501-158
DWN
JM

LEGEND:

- R/W = RIGHT-OF-WAY
- D = DEED
- O.R. = OFFICIAL RECORD
- P = PLAT

Prepared by:
JOHN C. BRENDLA & ASSOCIATES, INC.
CONSULTING ENGINEERS AND LAND SURVEYORS
4015 82nd Avenue North
Pinellas Park, Florida 33781
phone (727) 576-7546 ~ fax (727) 577-9932