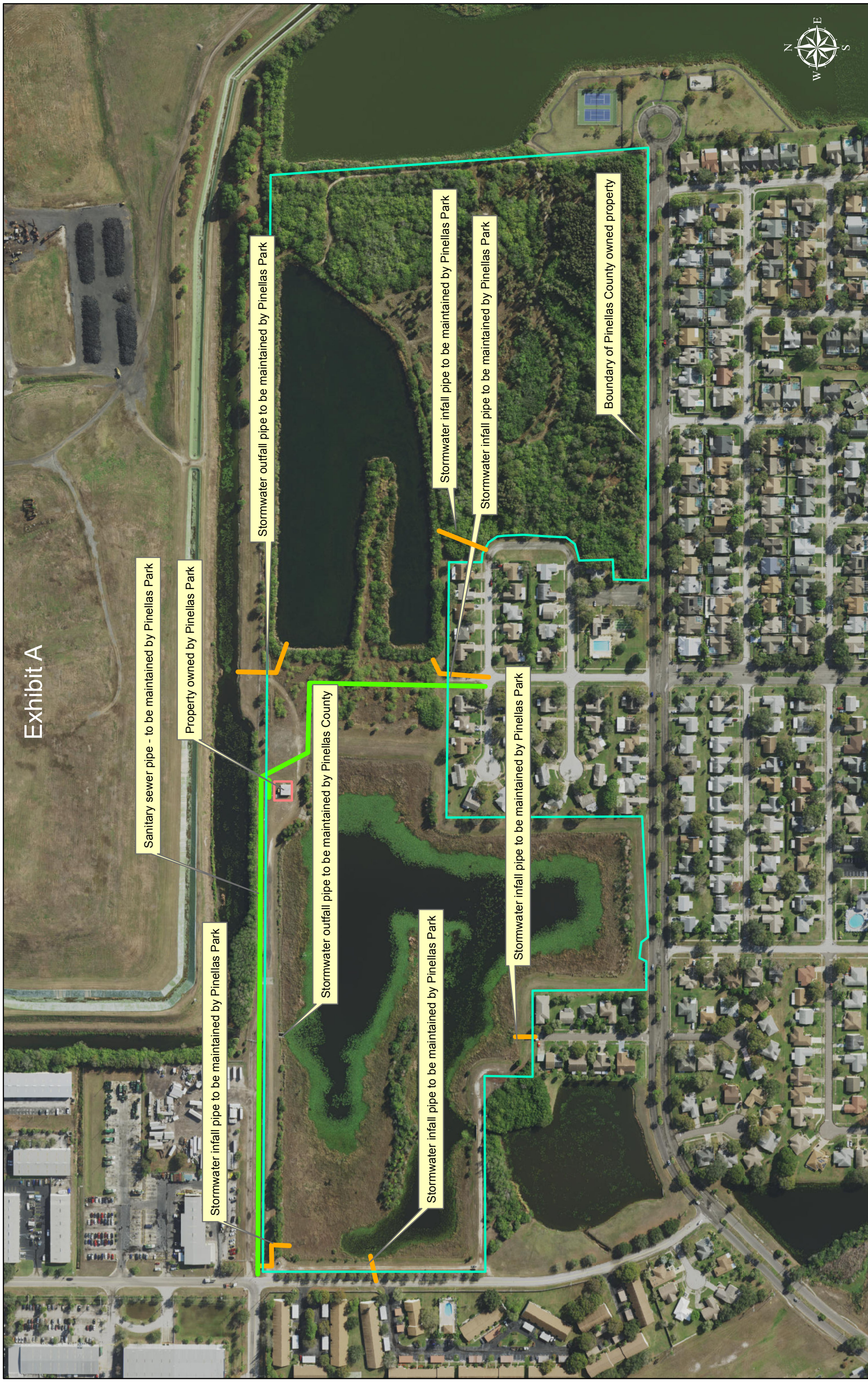


**ROOSEVELT CREEK STORMWATER FACILITY
IMPROVEMENT PROJECT – LOCATION MAP**



Exhibit A



Sanitary sewer pipe - to be maintained by Pinellas Park

Property owned by Pinellas Park

Stormwater infall pipe to be maintained by Pinellas Park

Stormwater outfall pipe to be maintained by Pinellas Park

Stormwater outfall pipe to be maintained by Pinellas County

Stormwater infall pipe to be maintained by Pinellas Park

Stormwater infall pipe to be maintained by Pinellas Park

Stormwater infall pipe to be maintained by Pinellas Park

Stormwater infall pipe to be maintained by Pinellas Park

Boundary of Pinellas County owned property