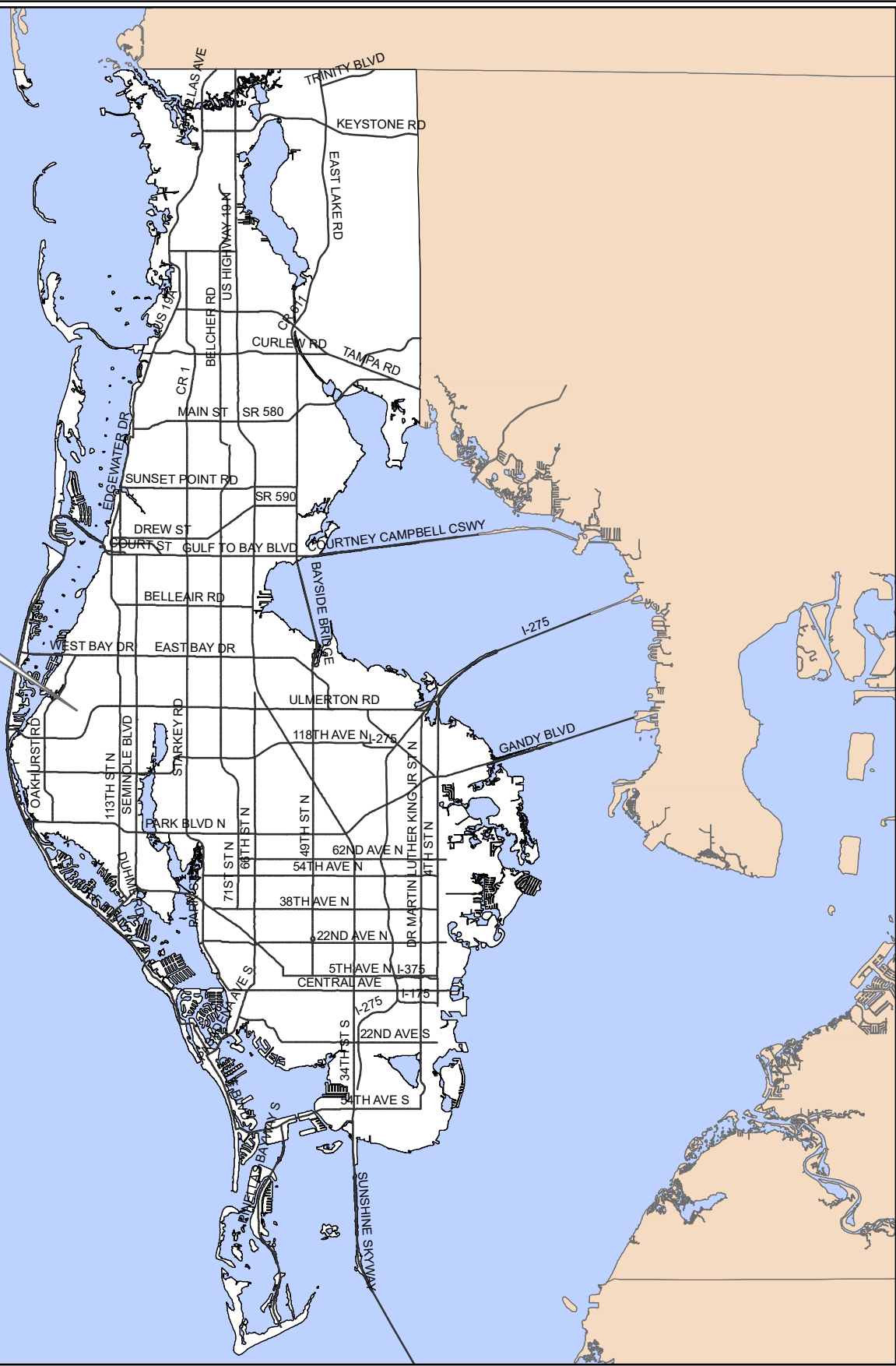


ZLU-16-12-17



ZLU-16-12-17
Location Map

Zoning	From: PC, Preservation/Conservation
	To: R-3, Single Family Residential
Land Use	From: Recreation/Open Space
	To: Residential Low



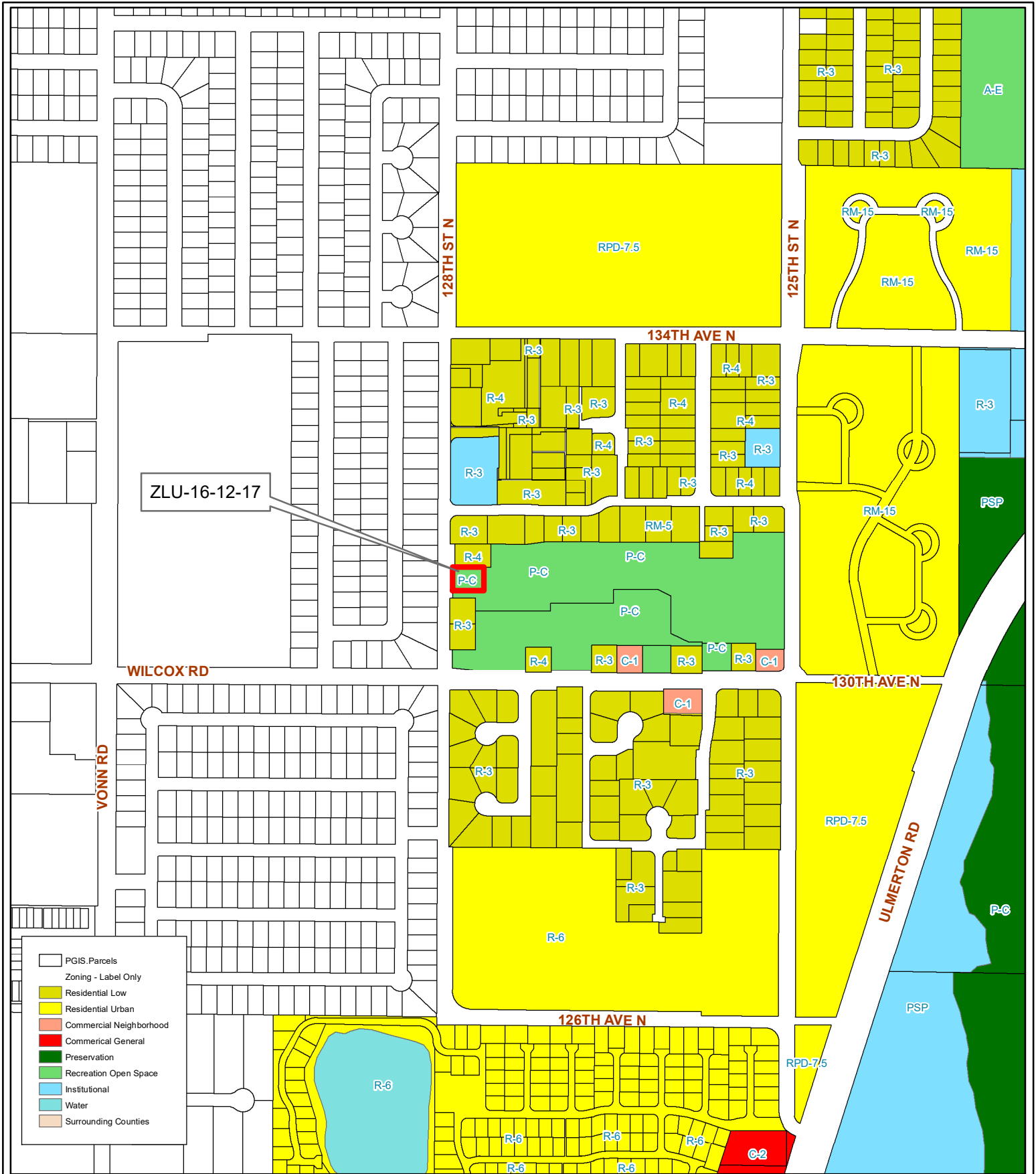
08/30/15/20342/000/2250

Prepared by: Pinellas County Planning Department



Date: 10/31/2017

1 inch = 4.5 miles



ZLU-16-12-17
Current Land Use & Zoning

Zoning	From: PC, Preservation/Conservation
	To: R-3, Single Family Residential
Land Use	From: Recreation/Open Space
	To: Residential Low

08/30/15/20342/000/2250

Prepared by: Pinellas County Planning Department



Date: 10/31/2017



1 inch = 0.09 miles



ZLU-16-12-17
Aerial Map

Zoning	From: PC, Preservation/Conservation
	To: R-3, Single Family Residential
Land Use	From: Recreation/Open Space
	To: Residential Low



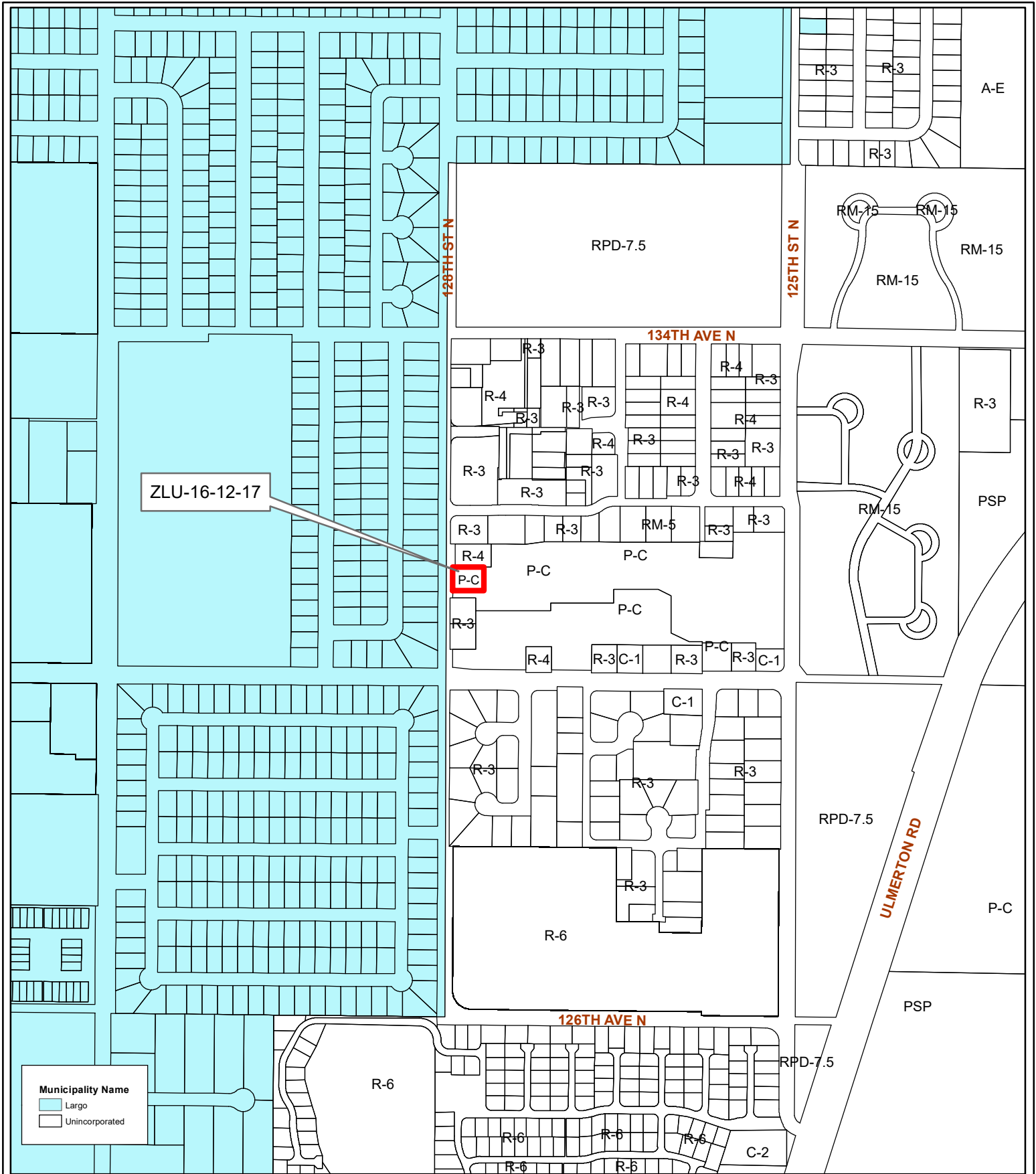
08/30/15/20342/000/2250

Prepared by: Pinellas County Planning Department



Date: 10/31/2017

1 inch = 0.09 miles



Municipality Name
 ■ Largo
 □ Unincorporated

ZLU-16-12-17
Municipal Map

Zoning From: PC, Preservation Conservation
 To: R-3, Single Family Residential
Land Use From: Recreation/Open Space
 To: Residential Low

08/30/15/20342/000/2250

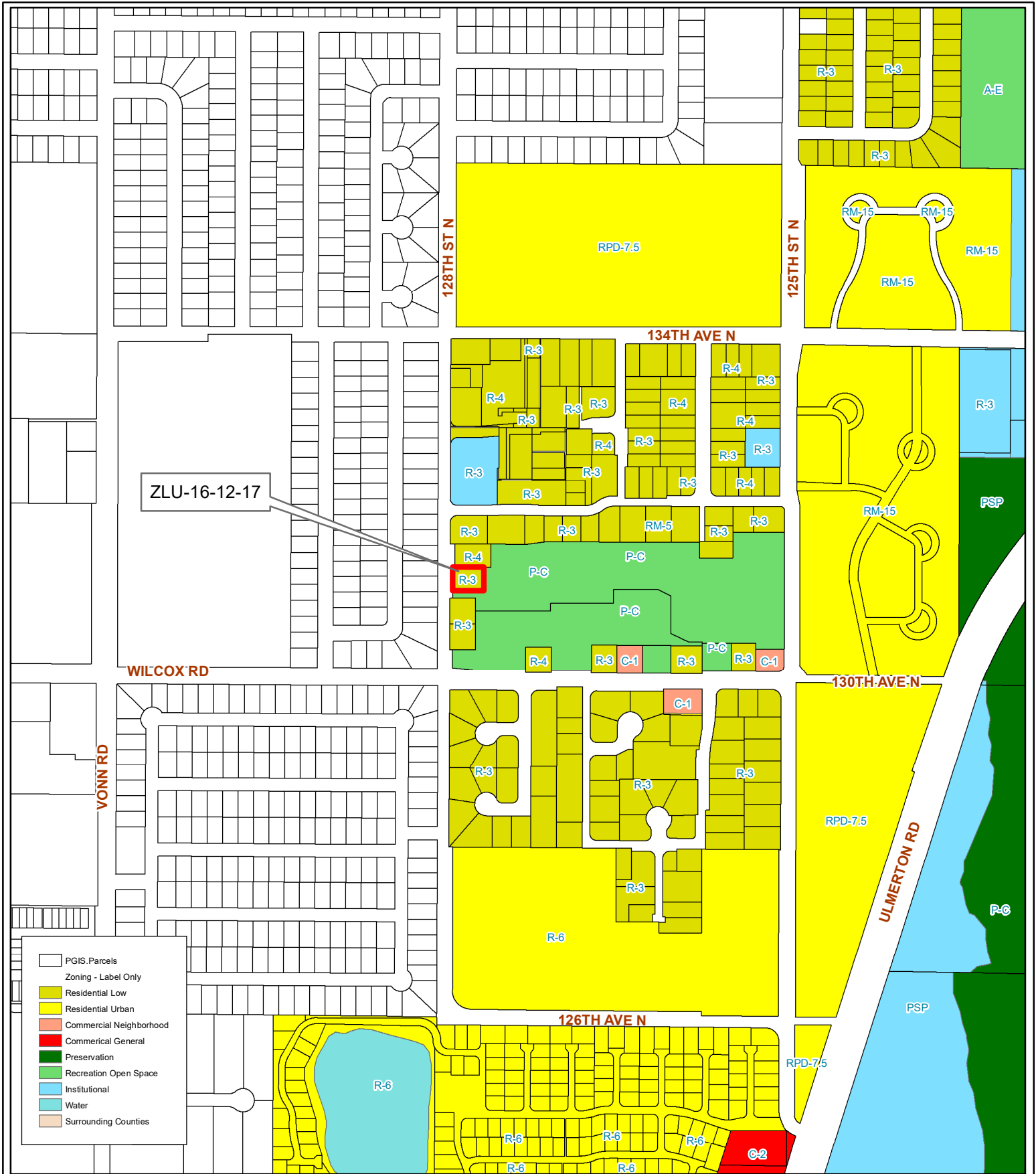
Prepared by: Pinellas County Planning Department



Date: 10/31/2017



1 inch = 0.09 miles



- PGIS.Parcels
- Zoning - Label Only
- Residential Low
- Residential Urban
- Commercial Neighborhood
- Commercial General
- Preservation
- Recreation Open Space
- Institutional
- Water
- Surrounding Counties

ZLU-16-12-17
Proposed Land Use & Zoning

Zoning	From: PC, Preservation/Conservation
	To: R-3, Single Family Residential
Land Use	From: Recreation/Open Space
	To: Residential Low



08/30/15/20342/000/2250

Prepared by: Pinellas County Planning Department



Date: 10/31/2017

1 inch = 0.09 miles