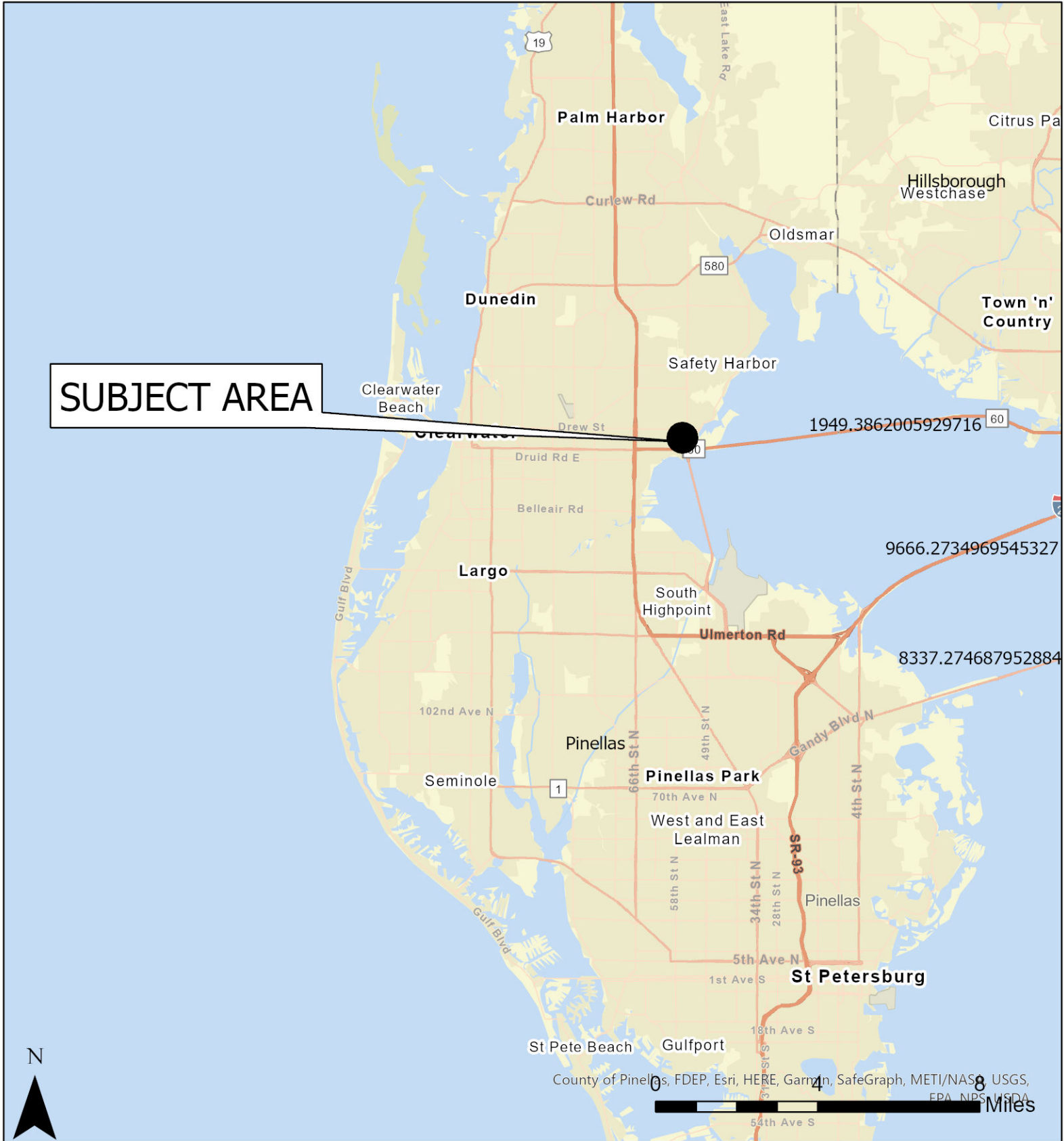


Case CW22-23

Map 1: Location Map



JURISDICTION: Clearwater

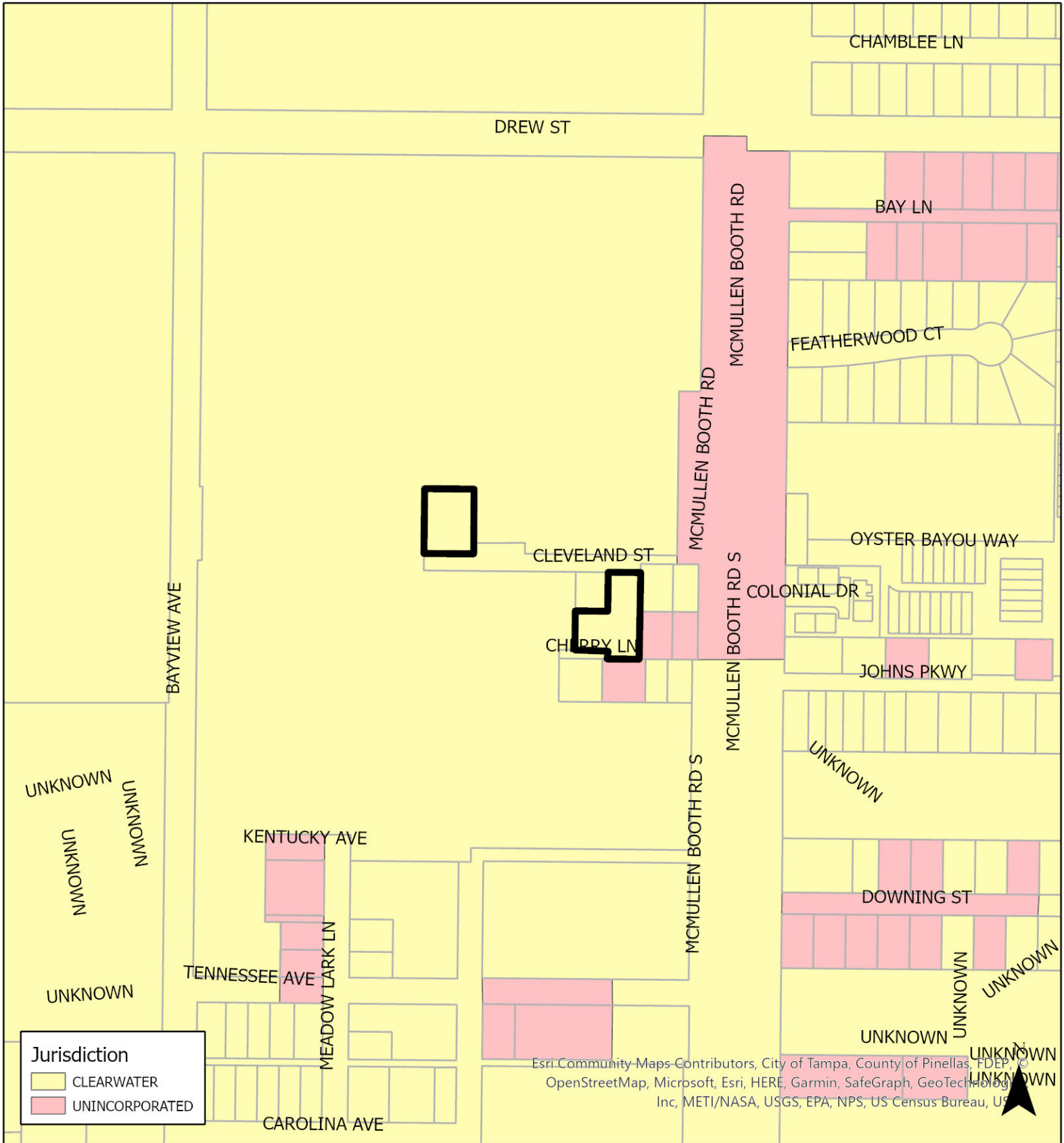
FROM: Residential Low Medium

AREA: 0.891 acres

TO: Public/Semi-Public

Case CW22-23

Map 2: Jurisdictional Map



JURISDICTION: Clearwater

FROM: Residential Low Medium

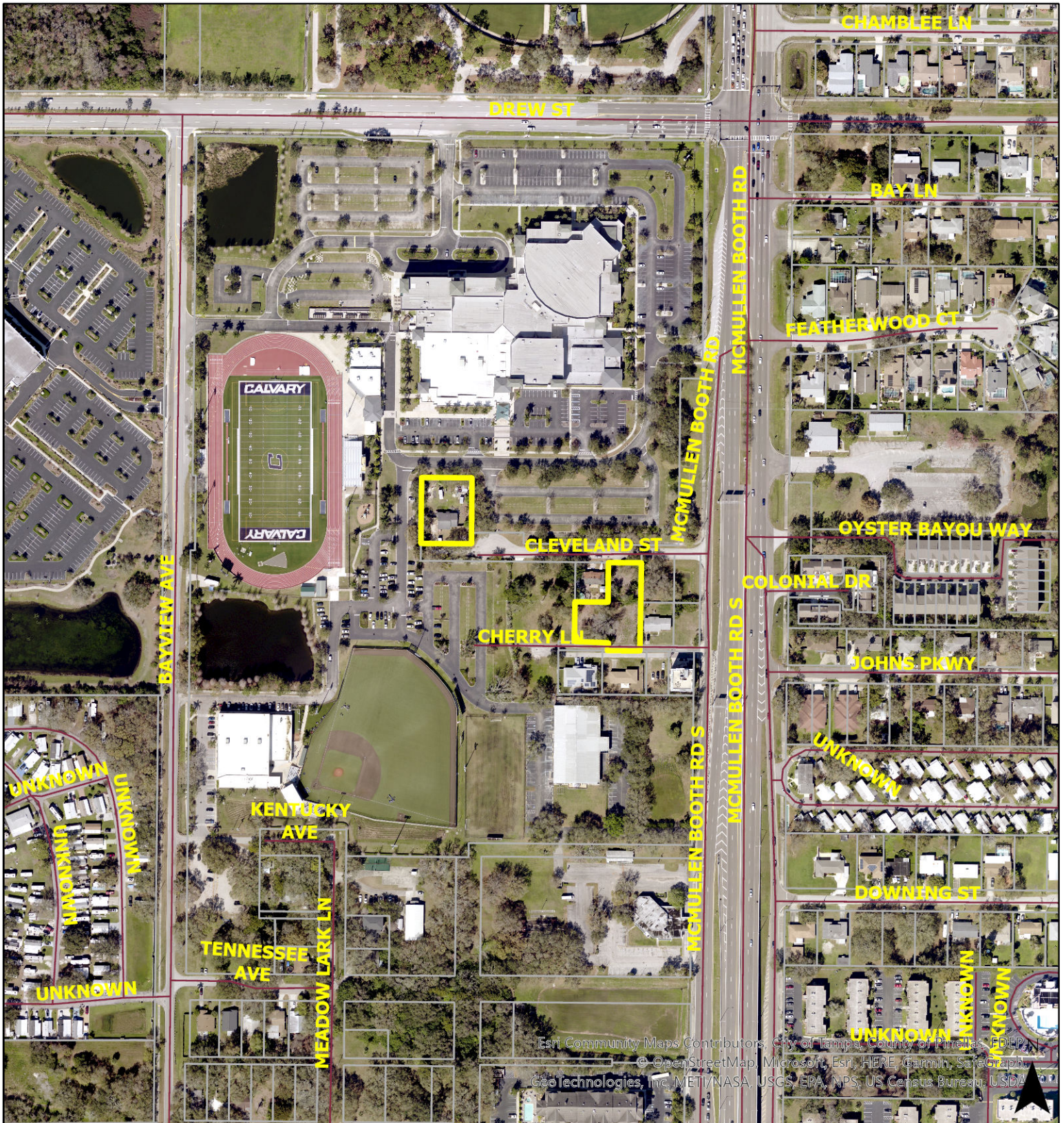


AREA: 0.891 acres

TO: Public/Semi-Public

Case CW22-23

Map 3: Aerial Map

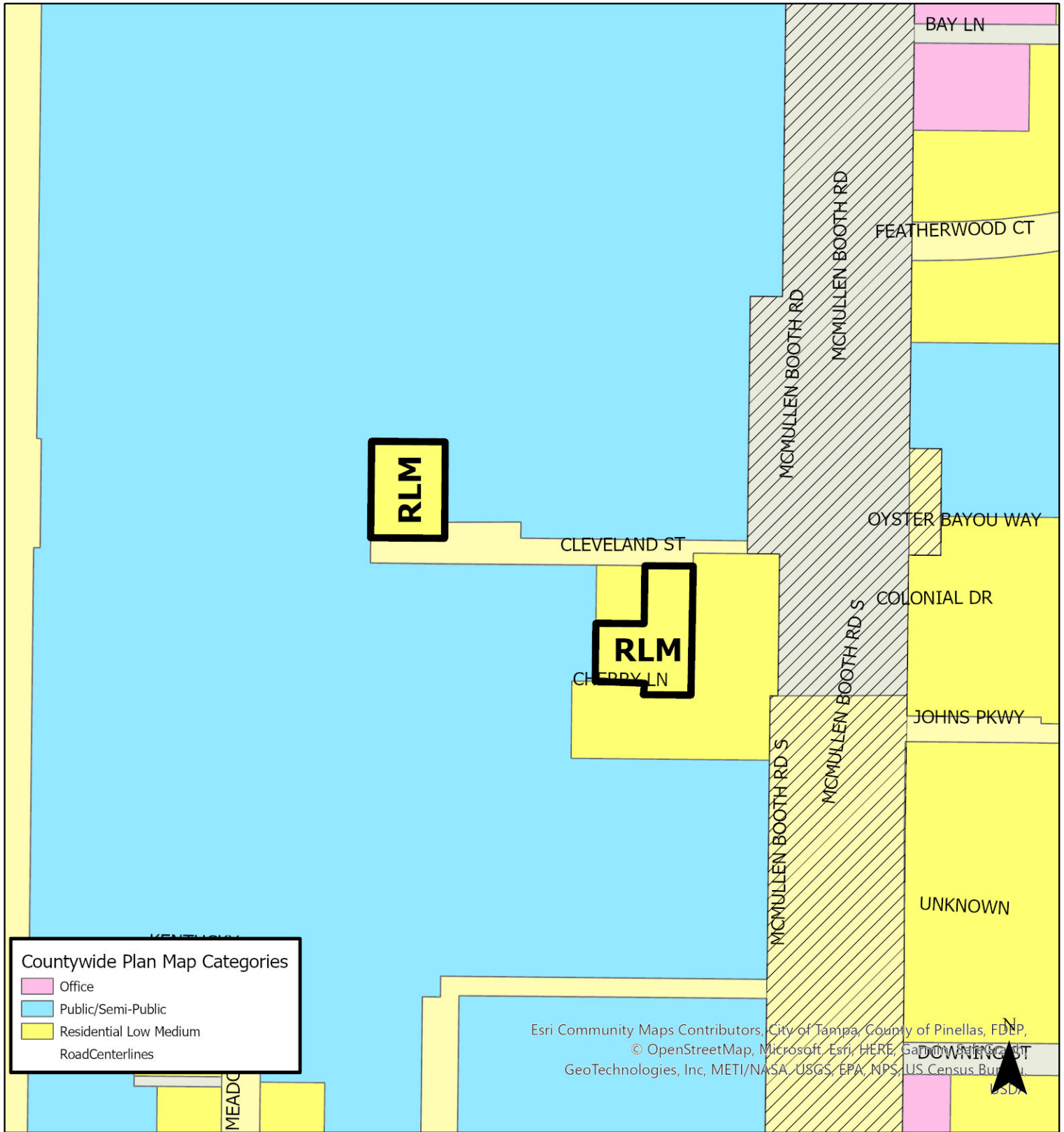


Esri Community Maps Contributors, City of Tampa, County of Pinellas, FDPP,
© OpenStreetMap, Microsoft, Esri, HERE, Garmin, SafeGraph,
GeoTechnologies, Inc, METI/NASA, USGS, EPA, NPS, US Census Bureau, USDA

JURISDICTION: Clearwater
AREA: 0.891 acres

FROM: Residential Low Medium
TO: Public/Semi-Public

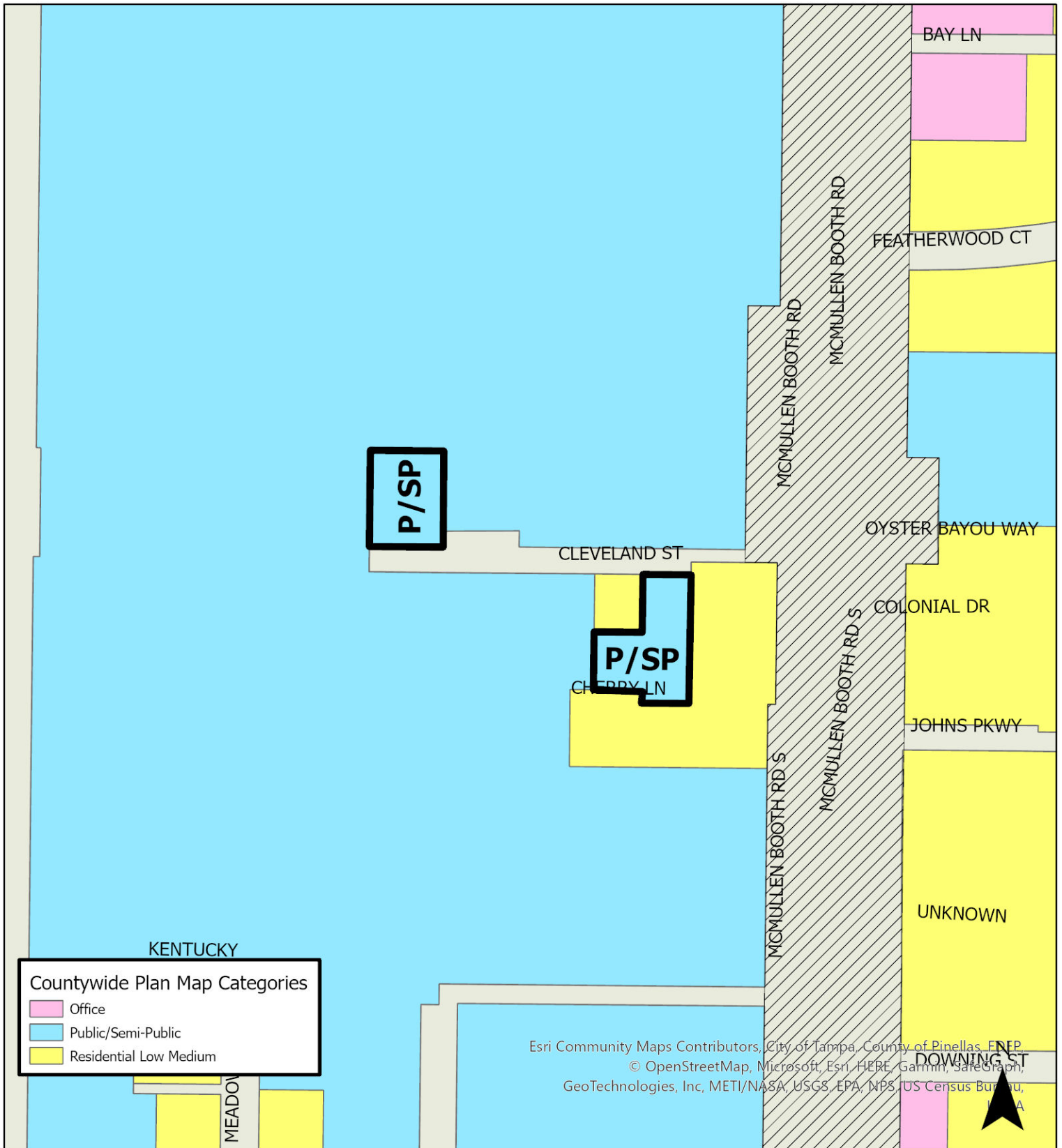




JURISDICTION: Clearwater
AREA: 0.891 acres

FROM: Residential Low Medium
TO: Public/Semi-Public





JURISDICTION: Clearwater

AREA: 0.891 acres

FROM: Residential Low Medium

TO: Public/Semi-Public

