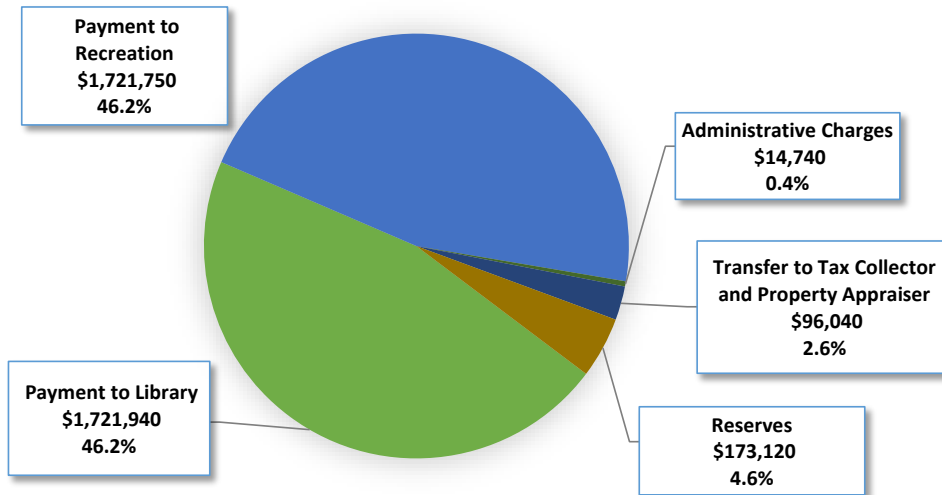
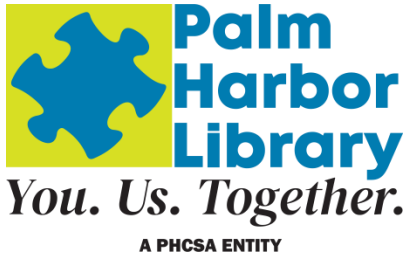
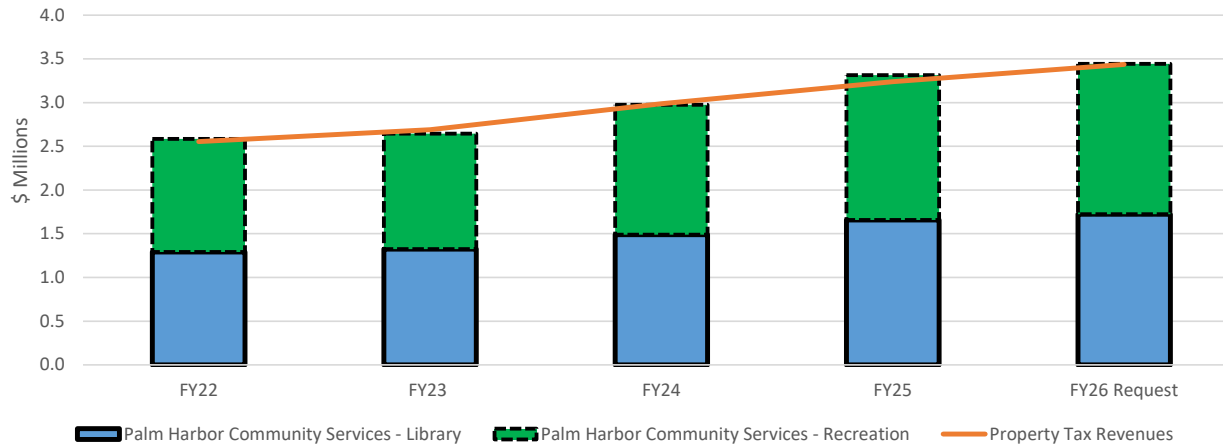


PALM HARBOR COMMUNITY SERVICES DISTRICT

FY26 Budget Request



Palm Harbor Community Services District Budget History



The Palm Harbor Community Services District is a special taxing district within unincorporated Pinellas County. This special taxing district, formed by the residents of Palm Harbor, was established for the purpose of providing library and recreation facilities and services to the residents of Palm Harbor. These facilities and services are funded by ad valorem taxes. Property owners within this district are levied a separate millage of 0.5 mills for this purpose, generating \$3,436,701 in estimated tax revenue for FY26. The maximum millage rate that can be levied is 0.5 mills.

Department: Palm Harbor Community Services District

FOSTER CONTINUAL GROWTH & VITALITY:

Support a vibrant community with recreation, arts, and culture to attract residents and visitors.

Program	Description	FY25 Total Program Allocation (\$)	FTE Count *
Library Operating	Library Services to residents of the Palm Harbor unincorporated community. Amount not to exceed ad valorem revenues collected.	\$1,721,940	22.8
Recreation Operating	Recreation Services to residents of the Palm Harbor unincorporated community. Amount not to exceed ad valorem revenues collected.	\$1,721,750	18.5
SUBTOTAL - PROGRAMS:		\$3,443,690	41.3
Administrative charges	Tax Collector and Property Appraiser Commissions, Full Cost Allocation, and Debt Service	\$110,780	
SUBTOTAL - EXPENDITURES:		\$3,554,470	
Reserves	Reserves	\$173,120	
GRAND TOTALS:		\$3,727,590	41.3

NOTE: This budget is supported by a separate property tax levy for the Palm Harbor Community Services District.

*** FTE are not County employees**

Library - 17 full-time & 8 part-time positions proposed for FY26.

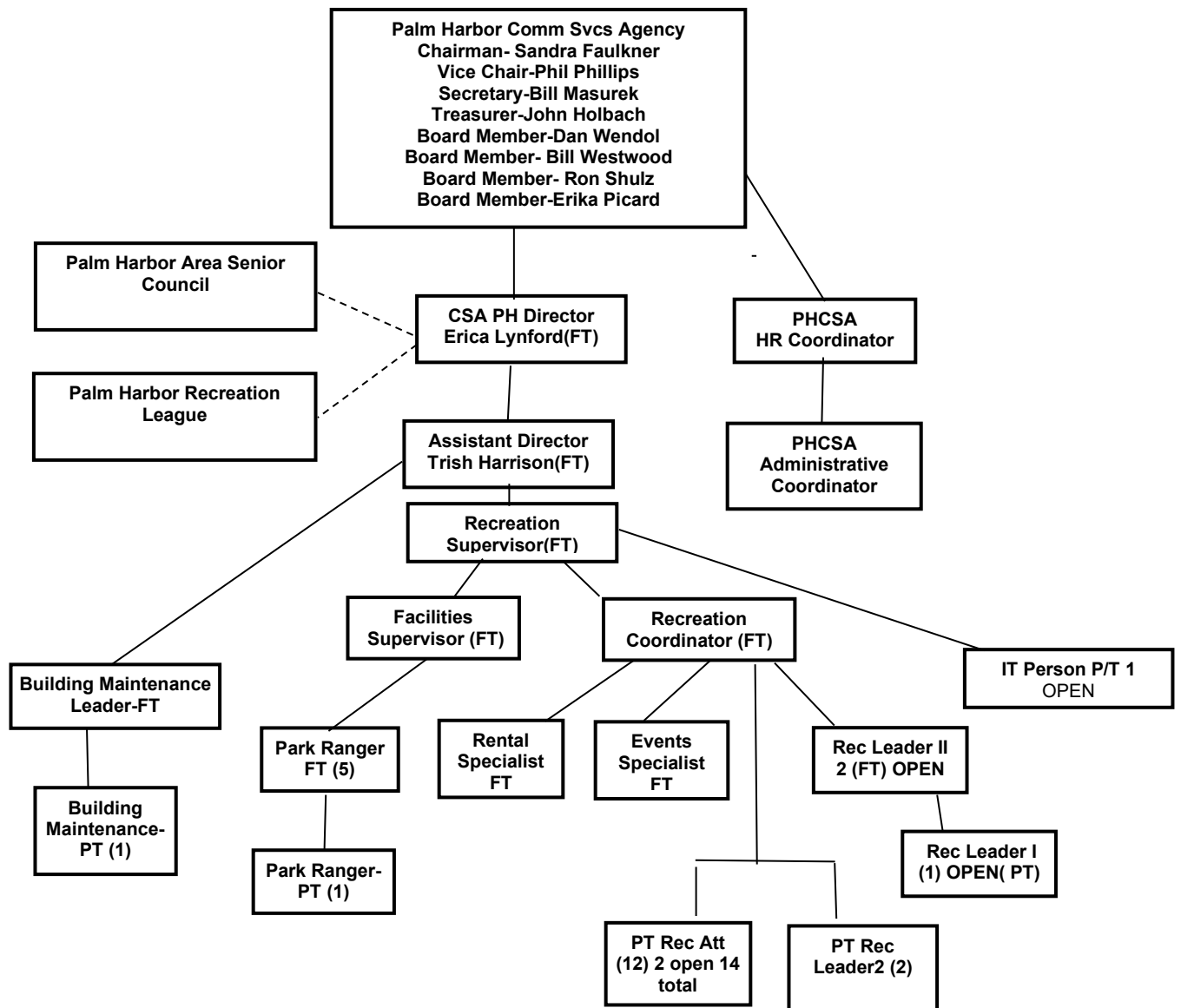
Recreation - 13 full-time & 13 part-time positions proposed for FY26



PALM HARBOR

PARKS & RECREATION

ORGANIZATIONAL CHART 2025



Palm Harbor Library Organizational Chart

Last updated April 10, 2025

PalmHarborLibrary.org/Contact-Us

