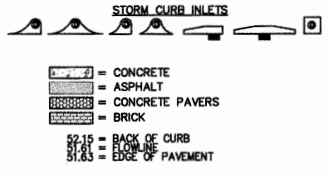


SYMBOL LEGEND

- + 25.25 = POINT OF ELEVATION
- 25.2' = DIMENSION FROM BUILDING TO BOUNDARY / RIGHT-OF-WAY LINE
- = BACKFLOW PREVENTER
- = BOLLARD or POST
- = BOX, CABLE TELEVISION
- = BOX, ELECTRIC UTILITY (TRANSFORMER)
- = BOX, TELEPHONE
- X = DECORATIVE LIGHT POLE
- ⊕ = ELECTRIC OUTLET
- ⊕ = FIRE HYDRANT
- = FLAGPOLE
- ▽ = FLARED END SECTION
- = GRATE INLET
- ⊕ = GUY ANCHOR
- ⊕ = LIGHT POLE, CONCRETE
- ⊕ = LIGHT POLE, METAL
- ⊕ = LIGHT POLE, WOOD
- ⊕ = MANHOLE, ELECTRIC
- ⊕ = MANHOLE, GREASE TRAP
- ⊕ = MANHOLE, SANITARY SEWER
- ⊕ = STORM SEWER STRUCTURE
- ⊕ = MANHOLE, TELEPHONE
- ⊕ = METER, ELECTRIC
- ⊕ = METER, GAS
- ⊕ = METER, RECLAIMED WATER
- ⊕ = METER, WATER
- ⊕ = MITERED END SECTION
- ⊕ = MONITORING WELL
- ⊕ = PEDESTRIAN CROSSING SIGNAL
- ⊕ = SANITARY CLEANOUT
- ⊕ = SCHEDULE B-2 ITEM
- ⊕ = TELEPHONE RISER
- ⊕ = TRAFFIC SIGN
- ⊕ = TRAFFIC SIGNAL BOX
- ⊕ = TRAFFIC SIGNAL POLE
- ⊕ = UNDERGROUND CABLE TELEVISION MARKER
- ⊕ = UNDERGROUND CABLE TELEVISION WARNING SIGN
- ⊕ = UNDERGROUND ELECTRIC MARKER
- ⊕ = UNDERGROUND ELECTRIC WARNING SIGN
- ⊕ = UNDERGROUND FIBER OPTIC MARKER
- ⊕ = UNDERGROUND FIBER OPTIC WARNING SIGN
- ⊕ = UNDERGROUND FORCEMAIN MARKER
- ⊕ = UNDERGROUND FORCEMAIN WARNING SIGN
- ⊕ = UNDERGROUND GAS MARKER
- ⊕ = UNDERGROUND GAS WARNING SIGN
- ⊕ = UNDERGROUND RECLAIMED WATER MARKER
- ⊕ = UNDERGROUND RECLAIMED WATER WARNING SIGN
- ⊕ = UNDERGROUND SANITARY SEWER MARKER
- ⊕ = UNDERGROUND SANITARY SEWER WARNING SIGN
- ⊕ = UNDERGROUND TELEPHONE MARKER
- ⊕ = UNDERGROUND TELEPHONE WARNING SIGN
- ⊕ = UNDERGROUND WATER MARKER
- ⊕ = UNDERGROUND WATER WARNING SIGN
- ⊕ = UTILITY POLE, CONCRETE
- ⊕ = UTILITY POLE, METAL
- ⊕ = UTILITY POLE, WOOD
- ⊕ = VALVE, GAS
- ⊕ = VALVE, RECLAIMED WATER
- ⊕ = VALVE, SANITARY
- ⊕ = VALVE, WATER
- ⊕ = WELL

TREE LEGEND

- ⊕ = BAY TREE
- ⊕ = BOTTLE BRUSH TREE
- ⊕ = CAMPHOR TREE
- ⊕ = CEDAR
- ⊕ = CHINABERRY TREE
- ⊕ = CITRUS TREE
- ⊕ = CYPRESS TREE
- ⊕ = ELM TREE
- ⊕ = EUCALYPTUS TREE
- ⊕ = MAGNOLIA TREE
- ⊕ = MAPLE TREE
- ⊕ = MULBERRY TREE
- ⊕ = OAK TREE
- ⊕ = OTHER SPECIES
- ⊕ = PALM TREE
- ⊕ = PECAN TREE
- ⊕ = PERSIMMON TREE
- ⊕ = PINE TREE
- ⊕ = SYCAMORE TREE
- ⊕ = WAX MYRTLE TREE
- ⊕ = WILLOW TREE



DESCRIPTION

LOTS 17 AND 18, CONRADE'S ADDITION TO LARGO, TO INCLUDE THAT PORTION OF A 6 FOOT ALLEY LYING SOUTH OF AND ADJACENT TO THE SOUTH LINE OF LOTS 17 AND 18, ALL ACCORDING TO THE MAP OR PLAT THEREOF AS RECORDED IN PLAT BOOK 10, PAGE 66, PUBLIC RECORDS OF PINELLAS COUNTY, FLORIDA.

CONTAINING 14,259 SQUARE FEET OR 0.327 ACRES OF LAND, MORE OR LESS.

NOTES

1. BEARING SHOWN HEREON ARE BASED ON THE SOUTH BOUNDARY OF CONRADE'S ADDITION TO LARGO AS RECORDED IN PLAT BOOK 5, PAGE 66 OF THE PUBLIC RECORDS OF PINELLAS COUNTY, FLORIDA, SAID LINE BEARS N.89°23'11"W.
2. SURVEY MAP AND REPORT OR THE COPIES THEREOF ARE NOT VALID WITHOUT THE SIGNATURE AND THE ORIGINAL RAISED SEAL OF A FLORIDA LICENSED SURVEYOR AND MAPPER. ADDITIONS OR DELETIONS TO SURVEY MAPS OR REPORTS BY OTHER THAN THE SIGNING PARTY OR PARTIES IS PROHIBITED.
3. NO EXCAVATION WAS PERFORMED TO VERIFY THE LOCATION OR EXISTENCE OF ANY UNDERGROUND UTILITIES, ENCROACHMENTS, IMPROVEMENTS, STRUCTURES OR FOUNDATIONS. UNDERGROUND UTILITY LINE LOCATIONS (IF SHOWN HEREON) ARE BASED UPON UTILITY PROVIDER ATLAS AND VISIBLE SURFACE EVIDENCE.
4. RE-USE OF THIS SURVEY FOR PURPOSES OTHER THAN WHICH IT WAS INTENDED, WITHOUT WRITTEN VERIFICATION, WILL BE AT THE RE-USERS SOLE RISK AND WITHOUT LIABILITY TO THE SURVEYOR. NOTHING HEREIN SHALL BE CONSTRUED TO GIVE ANY RIGHTS OR BENEFITS TO ANYONE OTHER THAN THOSE TO WHOM CERTIFIED.
5. ALL FOUND POINTS ARE UNMARKED UNLESS OTHERWISE NOTED. ALL PERIMETER BEARINGS AND DISTANCES ARE ALSO FIELD MEASURED UNLESS NOTED.
6. THIS SURVEY IS NOT INTENDED TO SHOW THE LOCATION OR EXISTENCE OF ANY JURISDICTIONAL, HAZARDOUS OR ENVIRONMENTALLY SENSITIVE AREAS.
7. THE SUBJECT PROPERTY IS NOT LOCATED IN A SPECIAL FLOOD HAZARD AREA. THE SITE APPEARS TO BE IN FLOOD ZONE X, ACCORDING TO THE FEDERAL EMERGENCY MANAGEMENT AGENCY, FLOOD INSURANCE RATE MAP, COMMUNITY PANEL NUMBER 125139 0118 G, MAP NUMBER 12103C0118G, EFFECTIVE DATE SEPTEMBER 3, 2003 (MAP INDEX NUMBER 12103C0118G, EFFECTIVE DATE AUGUST 18, 2009). POLARIS ASSOCIATES, INC. AND THE SIGNING SURVEYOR HEREON ASSUMES NO LIABILITY FOR THE ACCURACY OF THIS DETERMINATION.
8. ANY ZONING INFORMATION SHOWN OR NOTED HEREON IS BASED ON INFORMATION AVAILABLE DURING THE PREPARATION OF THE SURVEY. THIS INFORMATION SHOULD BE VERIFIED WITH THE GOVERNING AUTHORITY PRIOR TO ANY DETERMINATIONS OR DESIGN.
9. SHOWN ANYWHERE ON THIS SURVEY, THE WORD "CERTIFY" IS UNDERSTOOD TO BE AN EXPRESSION OF A PROFESSIONAL OPINION BASED UPON THE SURVEYOR'S BEST KNOWLEDGE, INFORMATION AND BELIEF, AND THAT IT THUS CONSTITUTES NEITHER A GUARANTEE NOR A WARRANTY.
10. UNLESS OTHERWISE INDICATED, THE PROPERTY DESCRIPTION AND EASEMENTS SHOWN WERE FURNISHED TO POLARIS ASSOCIATES, INC. AND ARE PRESUMED TO BE CORRECT. NO SEARCH OF ANY PUBLIC RECORDS, FOR EASEMENTS, DEEDS, ETC., WAS PERFORMED BY THIS FIRM FOR THE COMPLETION OF THIS SURVEY AND THERE MAY BE ADDITIONAL RESTRICTIONS THAT MAY BE FOUND IN THE PUBLIC RECORDS OF THIS COUNTY.
11. DESCRIPTIONS AND EASEMENTS SHOWN HEREON WERE TAKEN FROM A OLD REPUBLIC NATIONAL TITLE INSURANCE COMPANY, AMERICAN LAND TITLE ASSOCIATION COMMITMENT FOR TITLE INSURANCE, COMMITMENT NUMBER 826453, COMMITMENT DATE: DECEMBER 20, 2019, ISSUED BY OLD REPUBLIC NATIONAL TITLE INSURANCE COMPANY, 400 SECOND AVENUE SOUTH, MINNEAPOLIS, MINNESOTA, 55401 (612) 371-1111.

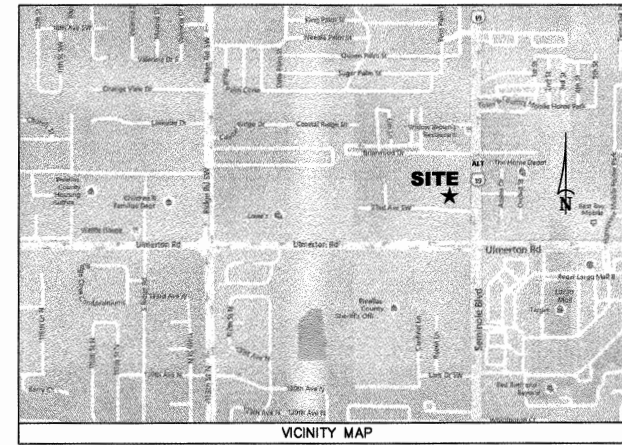
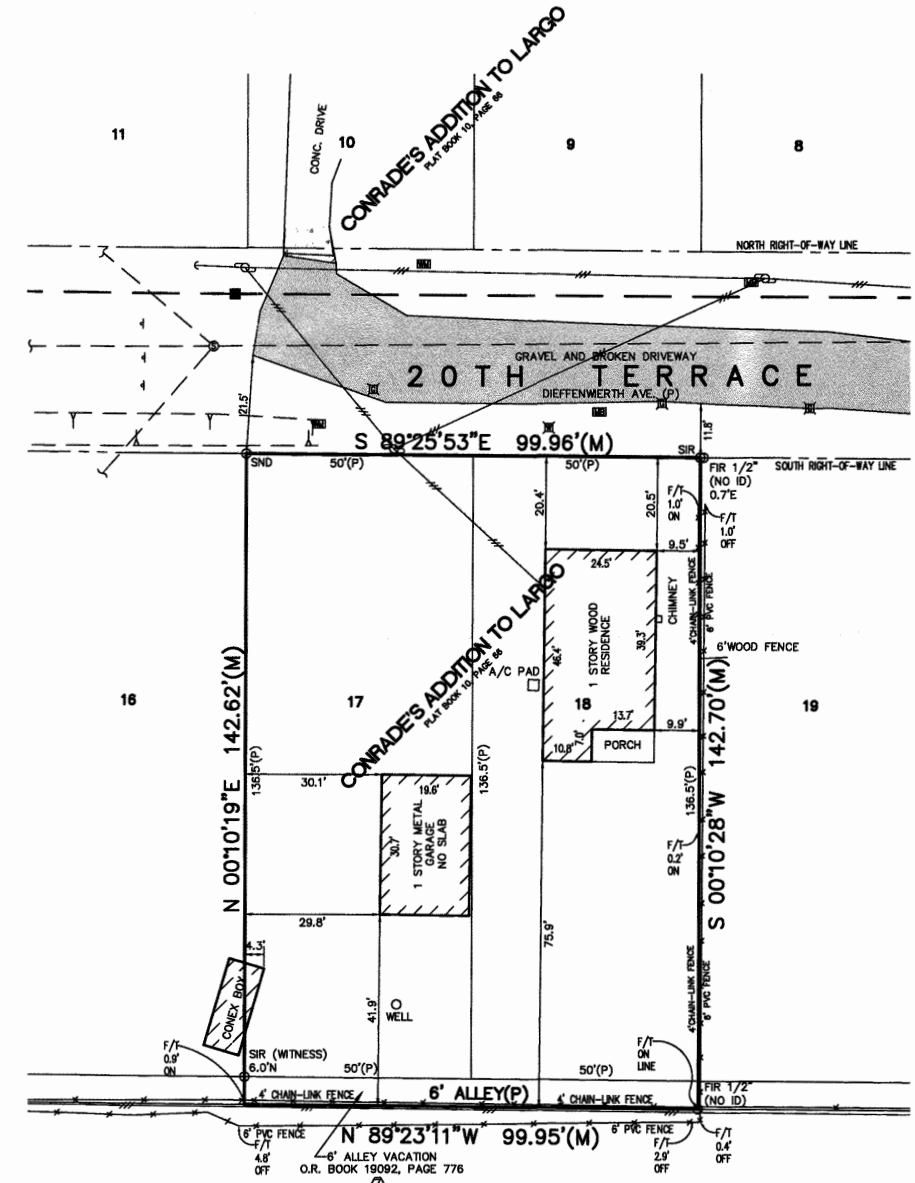
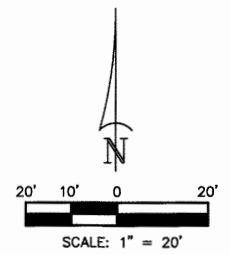
THE FOLLOWING ARE SCHEDULE B II EXCEPTIONS:

ITEMS 1 THROUGH 5. NOT MATTERS OF SURVEY

ITEM 6. ALL MATTERS CONTAINED ON THE PLAT OF CONRADE'S ADDITION TO LARGO, AS RECORDED IN PLAT BOOK 10, PAGE 66, PUBLIC RECORDS OF PINELLAS COUNTY, FLORIDA. SHOWN HEREON

ITEM 7. RESOLUTION NO. 16-6 RECORDED IN O.R. BOOK 19092, PAGE 776, PUBLIC RECORDS OF PINELLAS COUNTY, FLORIDA. SHOWN HEREON

12. THIS SURVEY IS BASED ON U.S. FEET.



FLU-21-05

LEGEND

- A/C = AIR CONDITIONER UNIT
- BLDG = BUILDING
- (C) = CALCULATED DATA
- OCR = CERTIFIED CORNER RECORD
- CLF = CHAIN LINK FENCE
- CMP = CORRUGATED METAL PIPE
- CONC = CONCRETE
- COR = CORNER
- CPS = CONDOMINIUM PLAT BOOK
- C/T = CURB TIE
- (D) = DEED DATA
- DB = DEED BOOK
- DIP = DUCTILE IRON PIPE
- ELM = ELLIPTICAL CORRUGATED METAL PIPE
- EL = ELEVATION
- EP = EDGE OF PAVEMENT
- ERCP = ELLIPTICAL REINFORCE CONCRETE PIPE
- (F) = FIELD DATA
- FCM = FOUND CONCRETE MONUMENT
- FDOT = FLORIDA DEPARTMENT OF TRANSPORTATION
- FIR = FOUND IRON ROD
- FND = FOUND NAIL & DISC
- FOP = FOUND OPEN PIPE
- FPP = FOUND PINCHED PIPE
- FRRS = FOUND RAILROAD SPIKE
- F/T = FENCE TIE
- FXC = FOUND X-CUT
- PLS = PROFESSIONAL LAND SURVEYOR
- POB = POINT OF BEGINNING
- POC = POINT OF COMMENCEMENT
- PRM = PERMANENT REFERENCE MONUMENT
- PSM = PROFESSIONAL SURVEYOR & MAPPER
- P/T = PAVEMENT TIE
- PVC = POLY VINYL CHLORIDE
- RCR = REINFORCE CONCRETE PIPE
- RLS = REGISTERED LAND SURVEYOR
- R/W = RIGHT-OF-WAY
- SEC = SECTION
- SHW = SEASONAL HIGH WATER
- SIR = SET IRON ROD 1/2" LB 6113
- SND = SET NAIL & DISC LB 6113
- SR = STATE ROAD
- S/T = SIDEWALK TIE
- STY = STORY
- SW = SIDEWALK
- TM = TEMPORARY BENCH MARK
- (TP) = TYPICAL
- VCP = VITRIFIED CLAY PIPE
- 12" = WITH
- WF = WOOD FENCE
- W/T = WALL TIE
- TOP OF BANK
- TOE OF SLOPE OR CENTER LINE OF DITCH
- 6" CHAIN LINK FENCE UNLESS OTHERWISE NOTED
- OVERHEAD UTILITY LINES
- APPROXIMATE LOCATION OF UNDERGROUND GAS LINE
- APPROXIMATE LOCATION OF UNDERGROUND WATER LINE
- APPROXIMATE LOCATION OF UNDERGROUND FORCEMAIN
- APPROXIMATE LOCATION OF UNDERGROUND RECLAIMED WATER LINE
- APPROXIMATE LOCATION OF UNDERGROUND SANITARY SEWER LINE
- 12" PVC - - - - - APPROXIMATE LOCATION OF UNDERGROUND STORM SEWER LINE
- 24" RCP - - - - - APPROXIMATE LOCATION OF UNDERGROUND STORM SEWER LINE

1-30-20	1	REVISE CERTIFIED TO NAMES	DHR
DATE	NUMBER	REVISIONS	BY

CERTIFICATION

CERTIFIED TO: BOULEVARD PARK PROPERTIES, LLC; JONATHAN JAMES DAMONTE, CHARTERED; OLD REPUBLIC NATIONAL TITLE INSURANCE COMPANY; 2270 COMMERCIAL WAY LLC; 90-20TH TERRACE SW LLC

I HEREBY CERTIFY THAT THE SURVEY REPRESENTED HEREON MEETS THE STANDARDS OF PRACTICE SET FORTH BY THE FLORIDA BOARD OF PROFESSIONAL SURVEYORS AND MAPPERS IN CHAPTER 5J-17, FLORIDA ADMINISTRATIVE CODE, PURSUANT TO SECTION 472.027 FLORIDA STATUTES.

DECEMBER 10, 2019
DATE OF SURVEY

Dan H. Rizzuto
DAN H. RIZZUTO
PROFESSIONAL LAND SURVEYOR
LICENSE NUMBER LS 5227
STATE OF FLORIDA

PROJECT: **LOTS 17 & 18, CONRADE'S ADDITION TO LARGO**

TYPE OF SURVEY: **BOUNDARY SURVEY**

PREPARED FOR: **DOCKSIDE INVESTORS, LLC**

POLARIS ASSOCIATES INC.

PROFESSIONAL SURVEYING LB 6113
2165 SUNNYDALE BOULEVARD, SUITE D
CLEARWATER, FLORIDA 33765
(727) 461-6113

DATE OF SURVEY: DECEMBER 10, 2019

CHECKED BY:	SCALE:	DRAWN BY:	JOB NO.	DRAWING PATH:	SHEET
DHR	1" = 20'	RED	4342-01	H:\V\4342\DWG\4342BT LOTS 17-18.DWG	1 OF 1