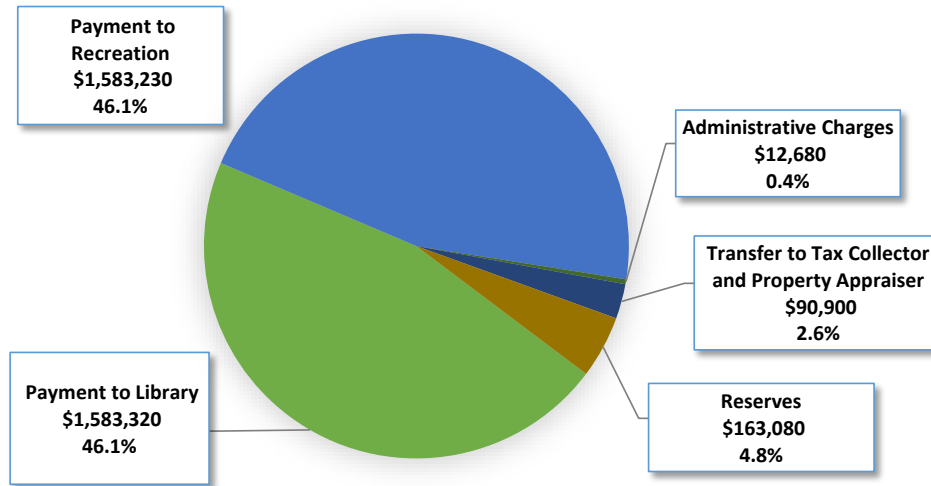
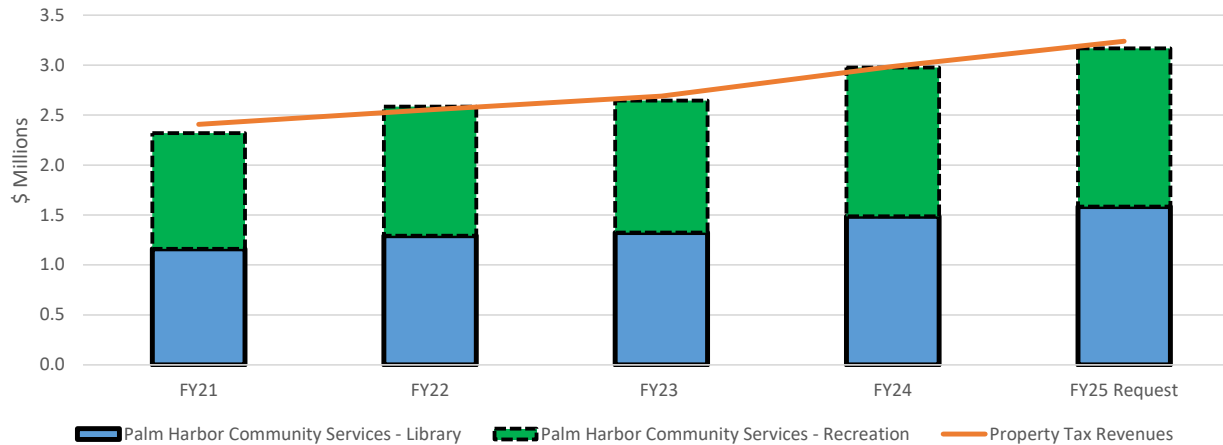


PALM HARBOR COMMUNITY SERVICES DISTRICT

FY25 Budget Request



Palm Harbor Community Services District Budget History



The Palm Harbor Community Services District is a special taxing district within unincorporated Pinellas County. This special taxing district, formed by the residents of Palm Harbor, was established for the purpose of providing library and recreation facilities and services to the residents of Palm Harbor. These facilities and services are funded by ad valorem taxes. Property owners within this district are levied a separate millage of 0.5 mills for this purpose, generating \$3,433,210 in estimated tax revenue for FY25. The maximum millage rate that can be levied is 0.5 mills.

Note: Administrative Charges include Fees, Cost Allocation, and Other Charges

Department: Palm Harbor Community Services District

FOSTER CONTINUAL GROWTH & VITALITY:

Support a vibrant community with recreation, arts, and culture to attract residents and visitors.

Program	Description	FY25 Total Program Allocation (\$)	FTE Count *
Library Operating	Library Services to residents of the Palm Harbor unincorporated community. Amount not to exceed ad valorem revenues collected.	\$1,583,320	22.8
Recreation Operating	Recreation Services to residents of the Palm Harbor unincorporated community. Amount not to exceed ad valorem revenues collected.	\$1,583,230	21.6
SUBTOTAL - PROGRAMS:		\$3,166,550	44.4
Administrative charges	Tax Collector and Property Appraiser Commissions, Full Cost Allocation, and Debt Service	\$103,580	
SUBTOTAL - EXPENDITURES:		\$3,270,130	
Reserves	Reserves	\$163,080	
GRAND TOTALS:		\$3,433,210	44.4

NOTE: This budget is supported by a separate property tax levy for the Palm Harbor Community Services District.

*** FTE are not County employees**

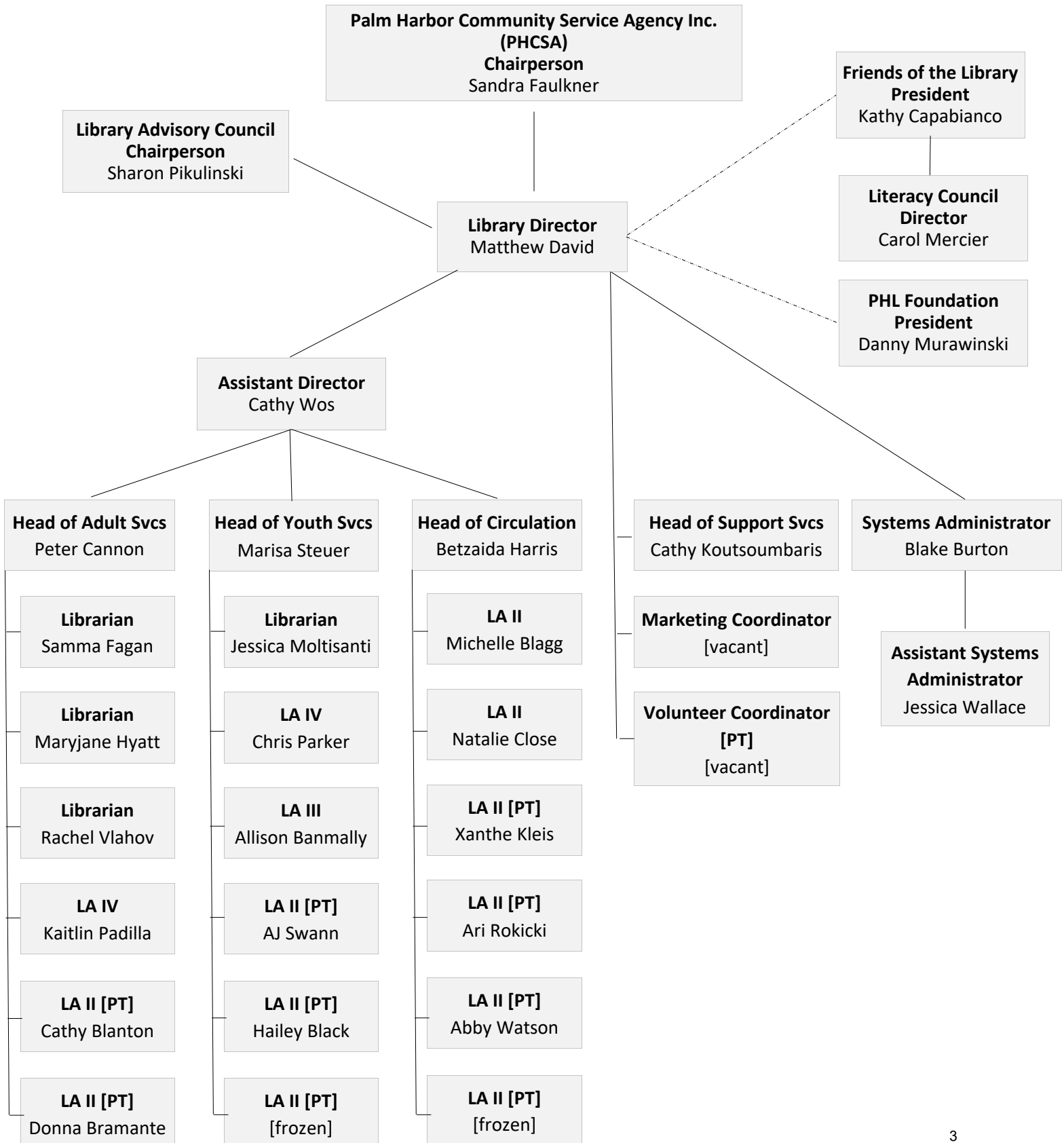
Library - 18 full-time & 8 part-time positions proposed for FY25. 2 PT positions Frozen.

Recreation - 15 full-time & 13 part-time positions proposed for FY25

Organizational Chart

Last updated April 21, 2024

PalmHarborLibrary.org/Contact-Us





PALM HARBOR

PARKS & RECREATION

ORGANIZATIONAL CHART 2024

