

*FIELD SURVEY JUNE 12 & JULY 9, 2014

Wetland Line Table

Line No.	Length	Bearing	Line No.	Length	Bearing
L1	15.91'	N 47°51'50" W	L16	45.76'	S 20°36'06" W
L2	35.21'	N 80°45'08" W	L17	24.96'	S 48°07'10" W
L3	11.48'	N 28°03'15" W	L20	30.84'	S 19°06'38" W
L4	16.57'	N 52°50'11" W	L21	32.85'	S 24°48'15" W
L5	26.34'	N 36°47'23" W	L22	35.53'	S 39°38'26" W
L6	14.92'	N 43°45'59" W	L23	20.79'	N 73°40'21" W
L7	30.77'	N 64°46'30" W	L24	16.67'	S 89°47'09" W
L8	20.46'	N 47°17'42" W	L25	18.78'	N 51°30'41" W
L9	20.46'	N 16°17'48" W	L26	23.89'	N 08°25'00" W
L10	22.24'	N 29°16'14" W	L27	36.13'	N 36°07'36" W
L11	38.61'	N 50°06'50" W	L28	22.98'	S 43°19'14" W
L12	32.63'	S 82°53'19" W	L29	22.86'	N 64°44'22" W
L13	37.22'	S 87°32'13" W	L30	22.12'	N 42°19'38" W
L14	34.81'	N 63°30'32" W	L31	40.15'	S 18°10'06" E
L15	45.46'	S 82°32'49" W	L32	23.40'	N 28°08'32" E
L16	35.02'	S 00°35'28" W	L33	27.68'	N 35°23'38" E
L17	55.33'	S 24°28'44" W			

Curve Table

Curve No.	Radius	Arc Length	Chord Direction	Chord Length
C1	200.00'	90.84'	N 47°37'39" E	90.06'
C2	350.00'	179.16'	N 75°18'14" E	177.21'

WETLAND IMPACT LEGEND

- PERMANENT IMPACTS = 0.03 Ac.
- TEMPORARY IMPACTS = 0.00 Ac.
- WETLAND MITIGATION AREA M-1 AREA = 0.09 Ac.
- WETLANDS WITHIN PROJECT AREA AREA = 0.07 Ac.

NO.	WATER ELEV.
OHW1	14.89
OLW1	13.97
OHW2	15.82
OLW2	14.75
OHW3	16.39
OLW3	15.40

OHW = ORDINARY HIGH WATER
OLW = ORDINARY LOW WATER

WETLAND MITIGATION AREA (M-1) PLANTING SCHEDULE

Species	Common Name	O.C.	Size	Amount
<i>Panicum hemitomon</i>	Mudcane	2'	BR	300
<i>Pontederia cordata</i>	Pickersweed	2'	BR	200
Total				500

NOTES

1. This plan and layout shown are based on previous survey provided to us. Trees shown within 25' of centerline of proposed road have been inventoried as per Florida Department of Transportation (FDOT) requirements. However, trees will be planted to compensate for those removed per Florida Department of Transportation requirements.
2. Contractor is to submit shop drawings, submit and sealed by registered structural engineers for the cost of the City's approval.

BENCHMARK:
ELEVATIONS SHOWN HEREON ARE BASED ON NGVD OF 1929. TEMPORARY BENCHMARK LOCATIONS ARE GRATE INLET "G1 13", GRATE ELEVATION = 19.77 AND GRATE INLET "G1 14", GRATE ELEVATION = 19.67 LOCATED IN THE NORTHEAST CORNER OF THE EAST PARKING LOT OF HARBORSIDE CHRISTIAN CHURCH. THE GRATE ELEVATIONS TAKEN FROM THE AS-BUILT SURVEY PREPARED BY: HAMILTON ENGINEERING & SURVEYING, DRAWING NO. 03150ASBLT, ISSUE DATE SEPTEMBER 3, 2004.

LEGEND

- CLEANOUT
- ELECTRIC BOX
- ELECTRIC MANHOLE
- FIRE HYDRANT
- GAS GATE VALVE
- GUY WIRE ANCHOR
- MAILBOX
- POWER POLE
- SANITARY MANHOLE
- STORM MANHOLE
- STREET SIGN
- STREET LIGHT POLE
- TELEPHONE POLE
- WATER GATE VALVE
- WATER METER BOX
- WIRE PULL BOX
- ELEVATIONS BY C & F, INC.

- TREE LEGEND**
- DENOTES TREE TO BE REMOVED
 - DENOTES CYPRESS TREE - SIZE INDICATED
 - DENOTES PALM TREE - SIZE INDICATED
 - DENOTES OAK TREE - SIZE INDICATED
 - DENOTES PINE TREE - SIZE INDICATED
 - DENOTES MAPLE TREE - SIZE INDICATED
 - DENOTES CAMPHOR TREE - SIZE INDICATED

Area of Map Request

UNPLATTED

NO.	GRADE ELEV.	TOP OF PIPE ELEV.	WATER ELEV.
1	9.23		13.48
2	7.92	14.79	13.48
3	9.23		13.48
4	14.3		15.09

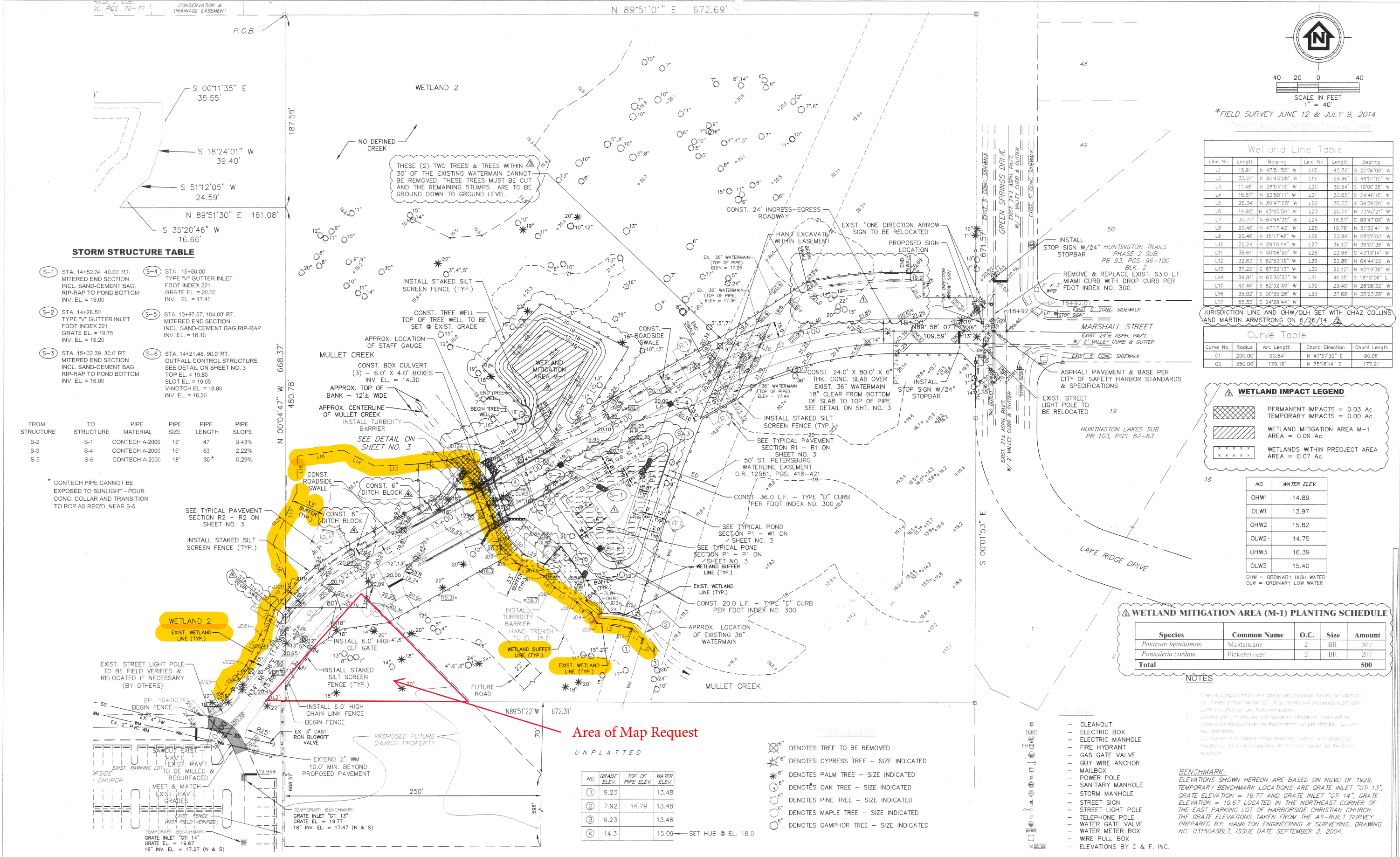
SET HUB @ EL. 18.0

STORM STRUCTURE TABLE

- | | |
|---|--|
| (S-1) STA. 14+52.34, 40.00' RT. MITERED END SECTION INCL. SAND-CEMENT BAG RIP-RAP TO POND BOTTOM INV. EL. = 16.00 | (S-4) STA. 15+50.00 TYPE "V" GUTTER INLET FDOT INDEX 221 GRATE EL. = 20.00 INV. EL. = 17.40 |
| (S-2) STA. 14+28.50 TYPE "V" GUTTER INLET FDOT INDEX 221 GRATE EL. = 19.75 INV. EL. = 16.20 | (S-5) STA. 13+97.67, 104.00' RT. MITERED END SECTION INCL. SAND-CEMENT BAG RIP-RAP INV. EL. = 16.10 |
| (S-3) STA. 15+02.39, 30.0' RT. MITERED END SECTION INCL. SAND-CEMENT BAG RIP-RAP TO POND BOTTOM INV. EL. = 16.00 | (S-6) STA. 14+21.48, 90.0' RT. OUTFALL CONTROL STRUCTURE SEE DETAIL ON SHEET NO. 3 TOP EL. = 19.80 INV. EL. = 19.05 V-NOTCH EL. = 18.80 INV. EL. = 16.20 |

FROM STRUCTURE	TO STRUCTURE	PIPE MATERIAL	PIPE SIZE	PIPE LENGTH	PIPE SLOPE
S-2	S-1	CONTECH A-2000	15"	47	0.43%
S-3	S-4	CONTECH A-2000	15"	63	2.22%
S-5	S-6	CONTECH A-2000	18"	35'	0.29%

* CONTECH PIPE CANNOT BE EXPOSED TO SUNLIGHT - POUR CONC. COLLAR AND TRANSITION TO RCP AS REQ'D. NEAR S-5



REVISIONS

BY	DATE	DESCRIPTION	BY	DATE	DESCRIPTION
D.E.C.	10/17/14	WETLAND MITIGATION			
D.E.C.	11/05/14	ADDED NOTE PER CITY OF ST. PETERSBURG COMMENTS			
D.E.C.	11/11/14	ADDED REVISIONS PER SWFWD COMMENTS			

CUMBEY & FAIR, INC.
CONSULTING CIVIL ENGINEERS

CERTIFICATE OF AUTHORIZATION #00002168

ENGINEERING PLANNING LAND SURVEYS

2463 ENTERPRISE ROAD CLEARWATER, FLORIDA 33763-1790

FOR: **harborside** CHRISTIAN CHURCH
2300 Marshall Street Safety Harbor, Florida 34695 PHONE: 727-724-1555

CITY OF SAFETY HARBOR
750 Main Street Safety Harbor, Florida 34695 PHONE: 727-724-1555

DRWN BY: DEC DATE 07/14	PROJECT: HARBORSIDE CHRISTIAN CHURCH	SHEET: 2
DSGN BY: FJS DATE 07/14	JOB NO. 151C	
CHKD BY: FJS DATE 07/14	SITE CONSTRUCTION PLAN	

PANKAJ SHAM P.E. #21180 FLORIDA REGISTERED ENGINEER