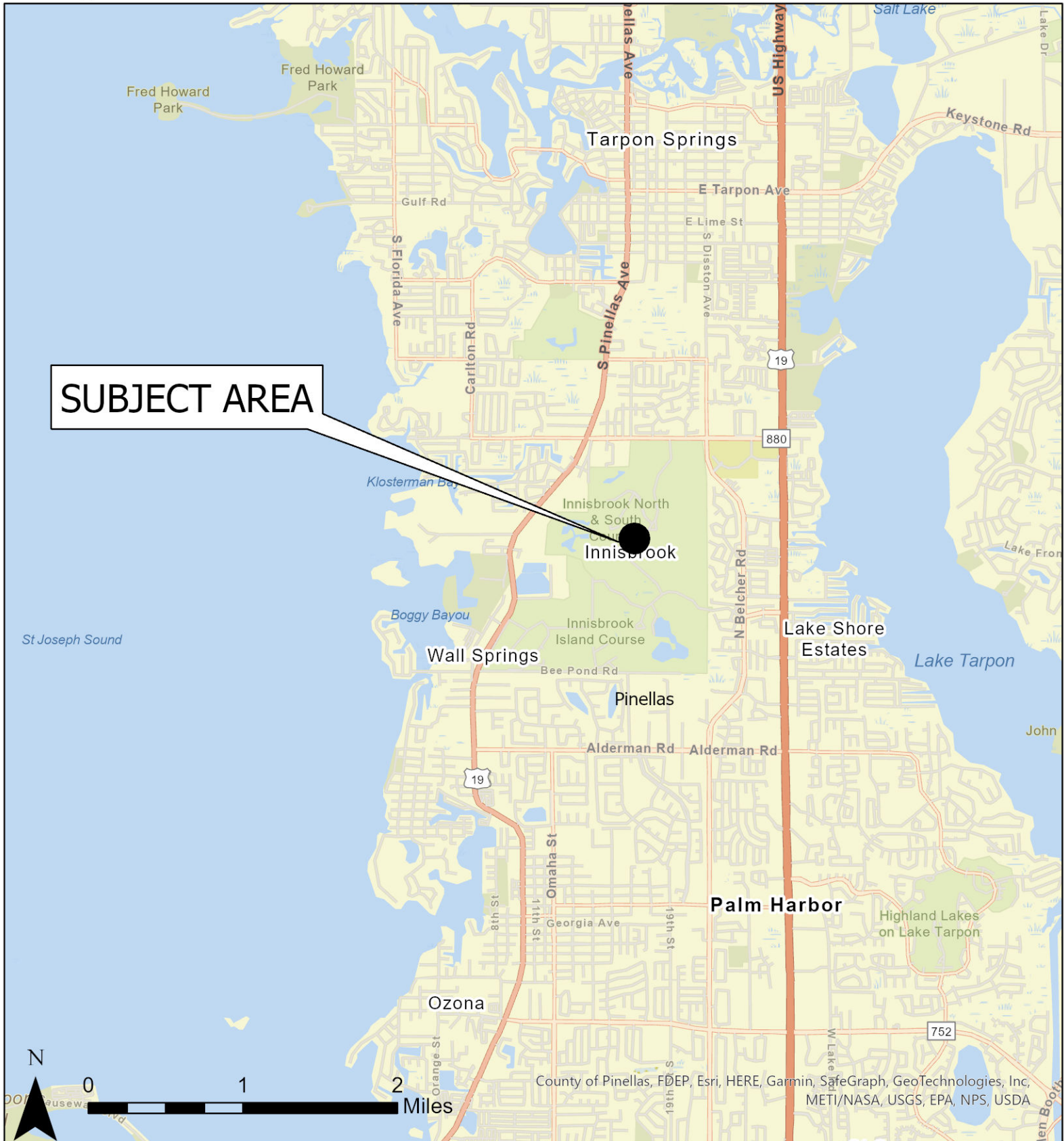


Case CW22-16

Map 1: Location Map



JURISDICTION: Pinellas County

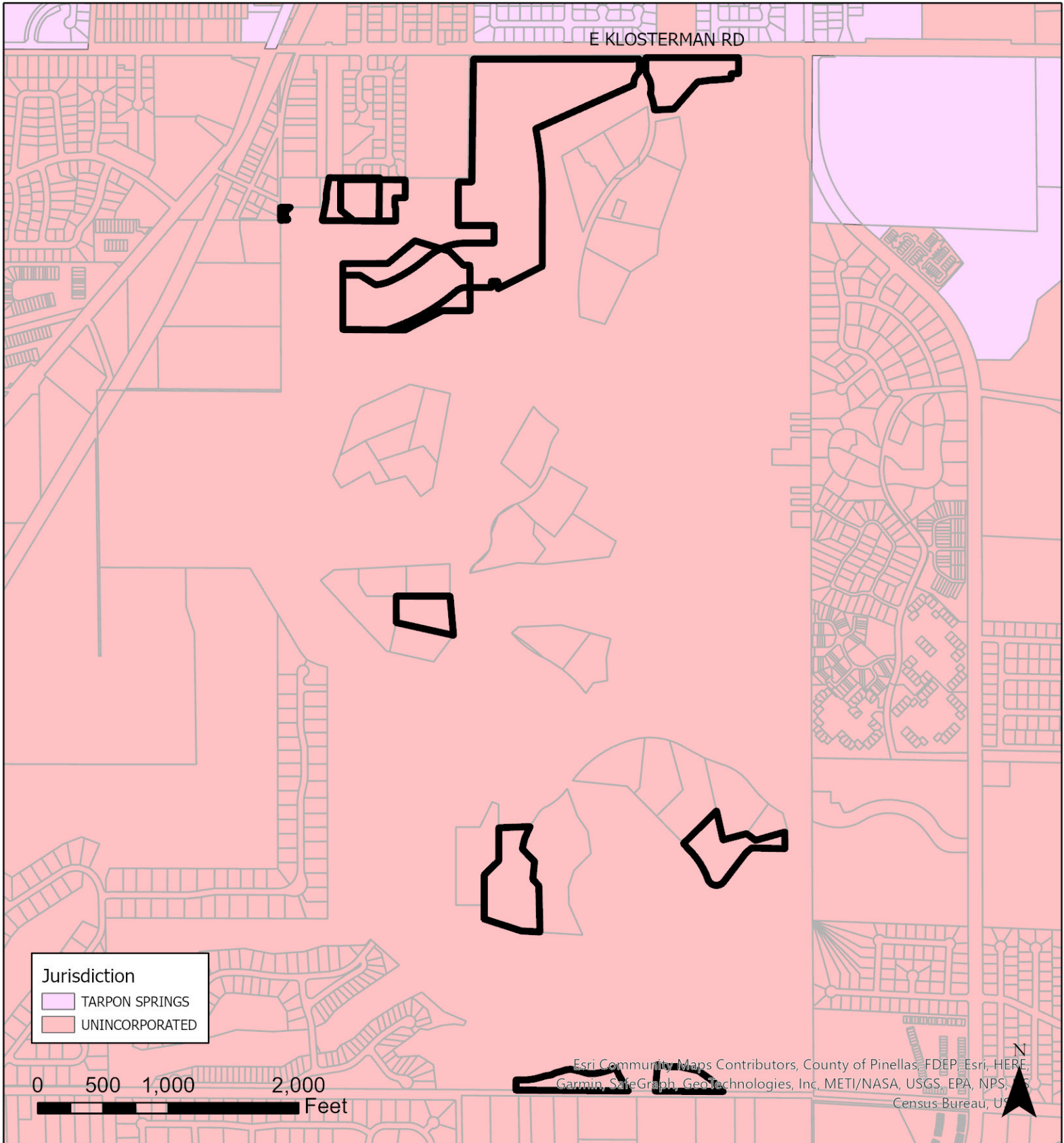
AREA: 64.1 acres

FROM: Residential Very Low, Residential Low
Medium, and Recreation/Open Space

To: Residential Low Medium and Recreation/Open Space

Case CW22-16

Map 2: Jurisdictional Map



JURISDICTION: Pinellas County

AREA: 64.1 acres

FROM: Residential Very Low, Residential Low
Medium, and Recreation/Open Space

To: Residential Low Medium and Recreation/Open Space

Case CW22-16

Map 3: Aerial Map



JURISDICTION: Pinellas County

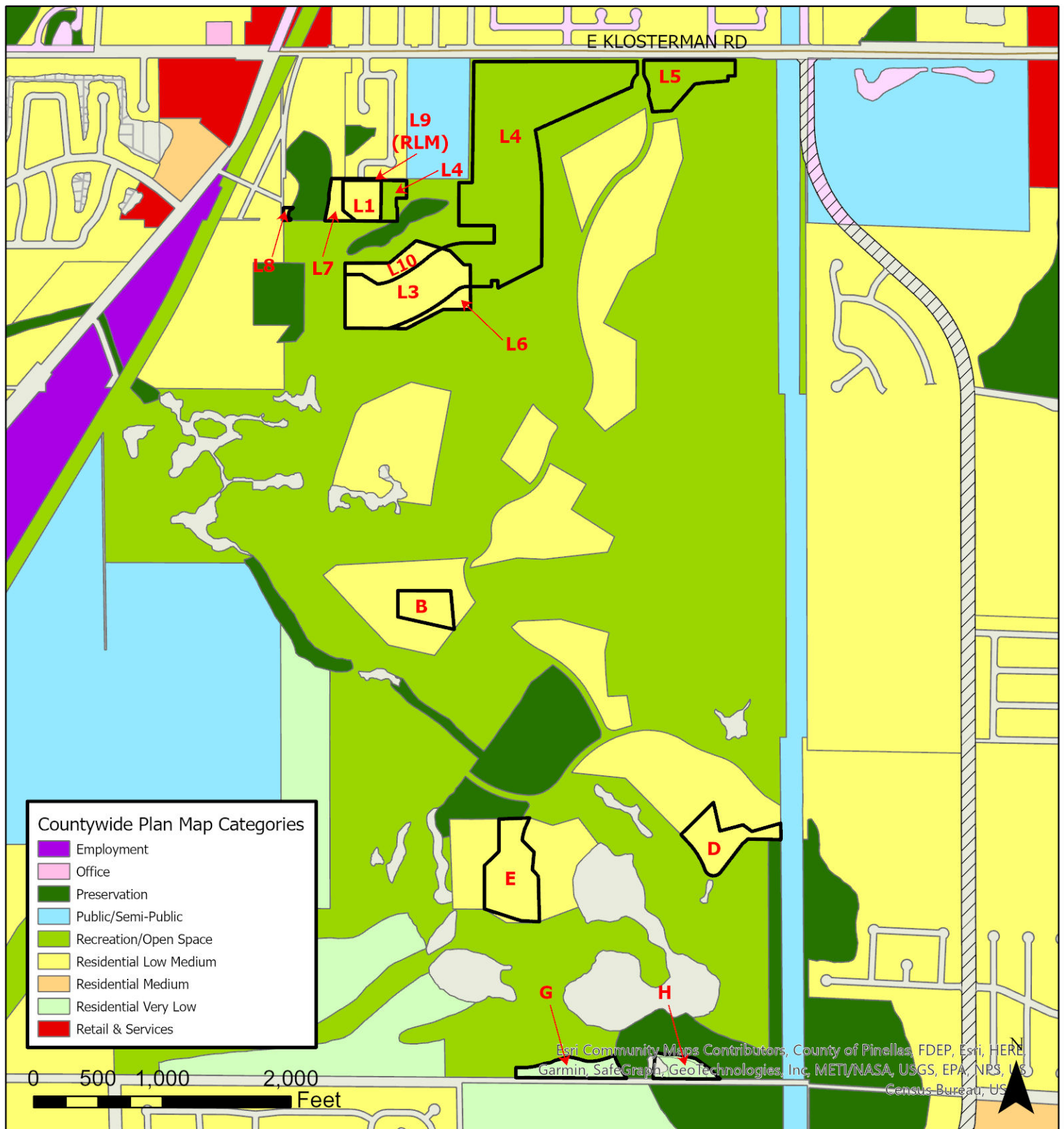
AREA: 64.1 acres

FROM: Residential Very Low, Residential Low
Medium, and Recreation/Open Space

To: Residential Low Medium and Recreation/Open Space

Case CW22-16

Map 4: Current Countywide Plan Map

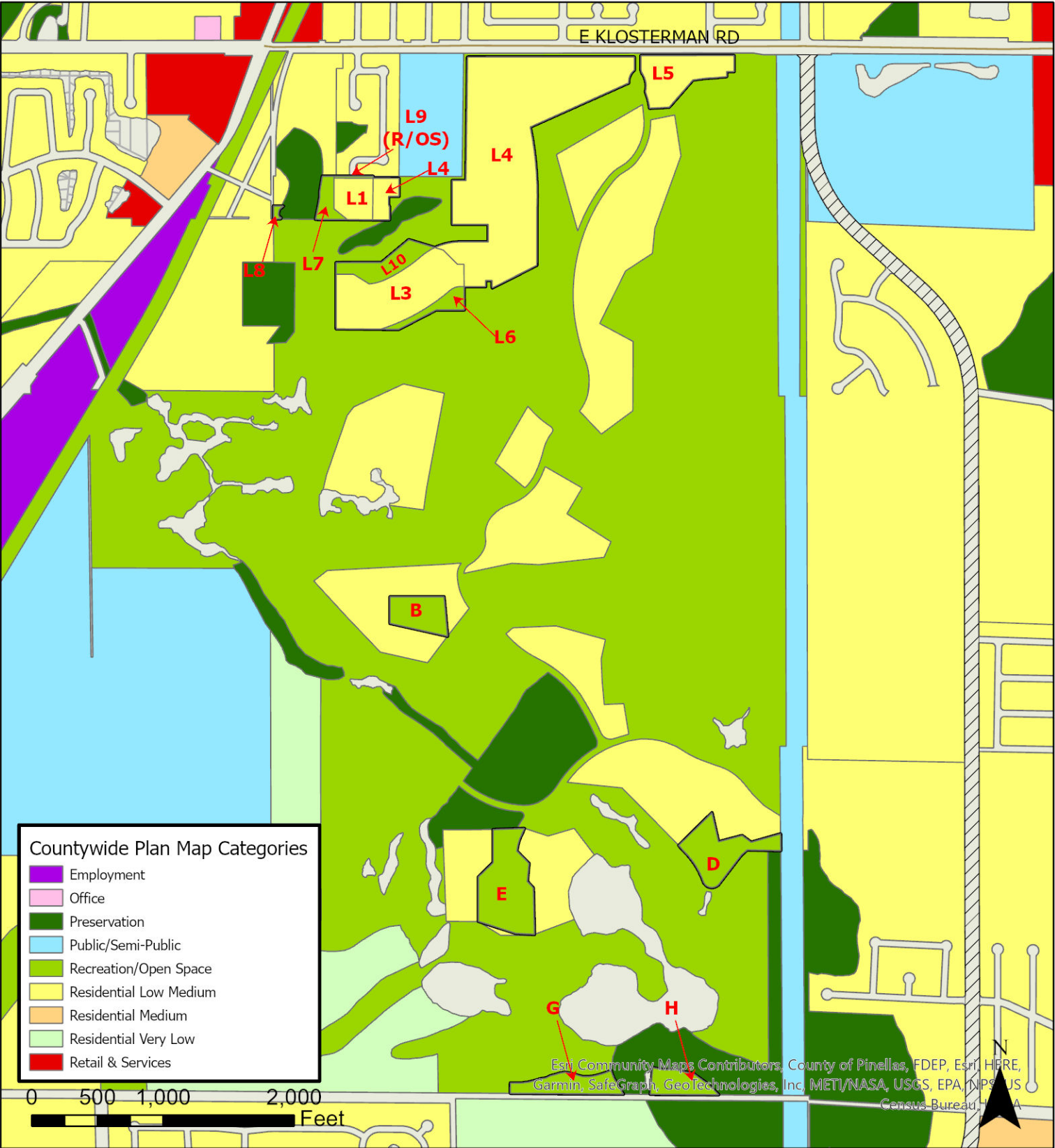


JURISDICTION: Pinellas County

AREA: 64.1 acres

FROM: Residential Very Low, Residential Low Medium, and Recreation/Open Space

To: Residential Low Medium and Recreation/Open Space



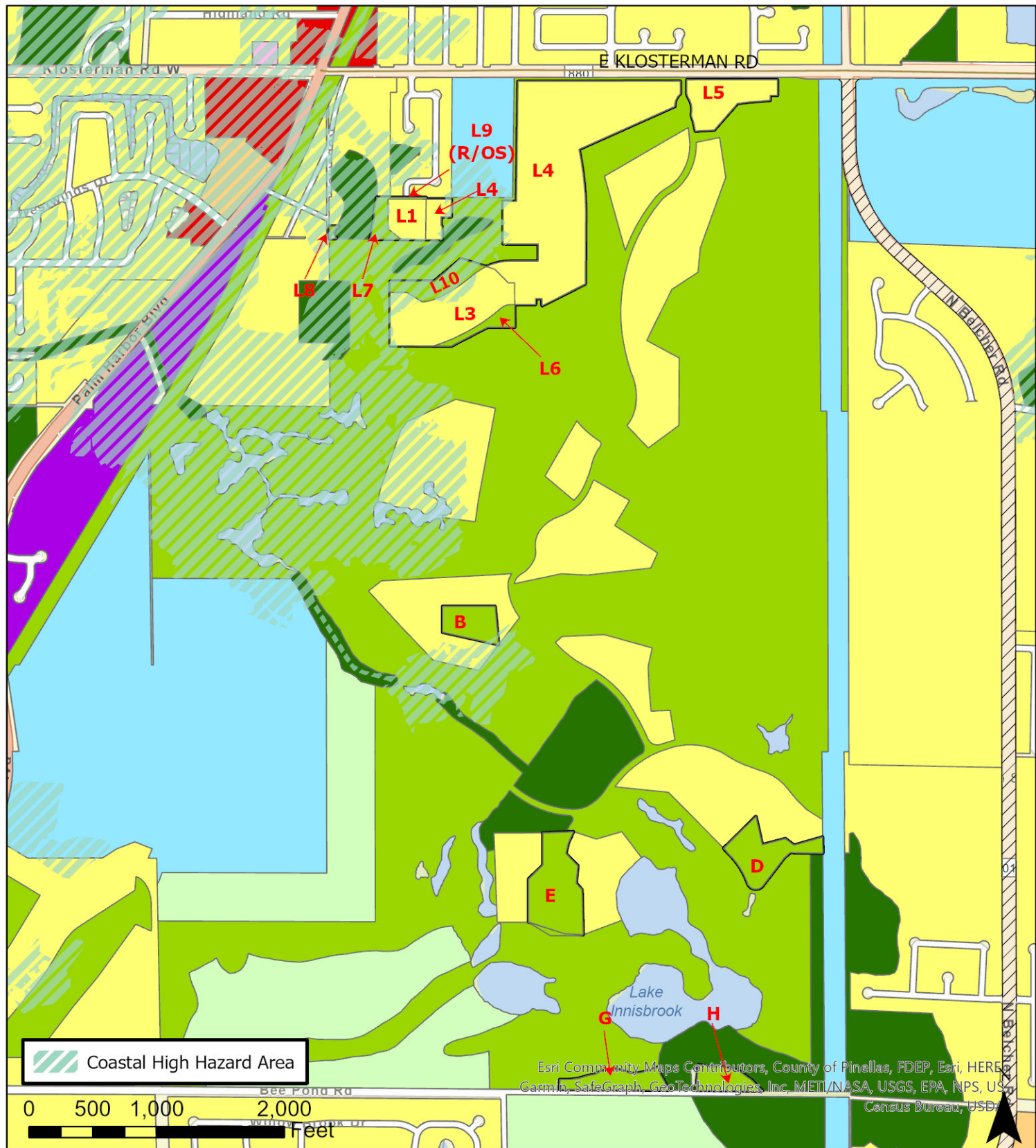
JURISDICTION: Pinellas County

AREA: 64.1 acres

FROM: Residential Very Low, Residential Low Medium, and Recreation/Open Space

To: Residential Low Medium and Recreation/Open Space

Case CW22-16
Map 7: Coastal High Hazard Area Map



JURISDICTION: Pinellas County	FROM: Residential Very Low, Residential Low Medium, and Recreation/Open Space
AREA: 64.1 acres	To: Residential Low Medium and Recreation/Open Space