

ZON-23-01

Location Map

Zoning
From: GO, General Office
To: E-2, Employment-2

Development Agreement allowing up to 23,314 sf of building area for allowable uses (see case file and staff report for details).

Portions of Parcels 08/28/16/47437/000/0010 & 0020

Prepared by: Housing & Community Development Department



Date: 3/28/2023



1 inch = 4.5 miles



ZON-23-01

Aerial Map

Zoning

From: GO, General Office

To: E-2, Employment-2

Development Agreement allowing up to 23,314 sf of building area for allowable use (see staff report for details).



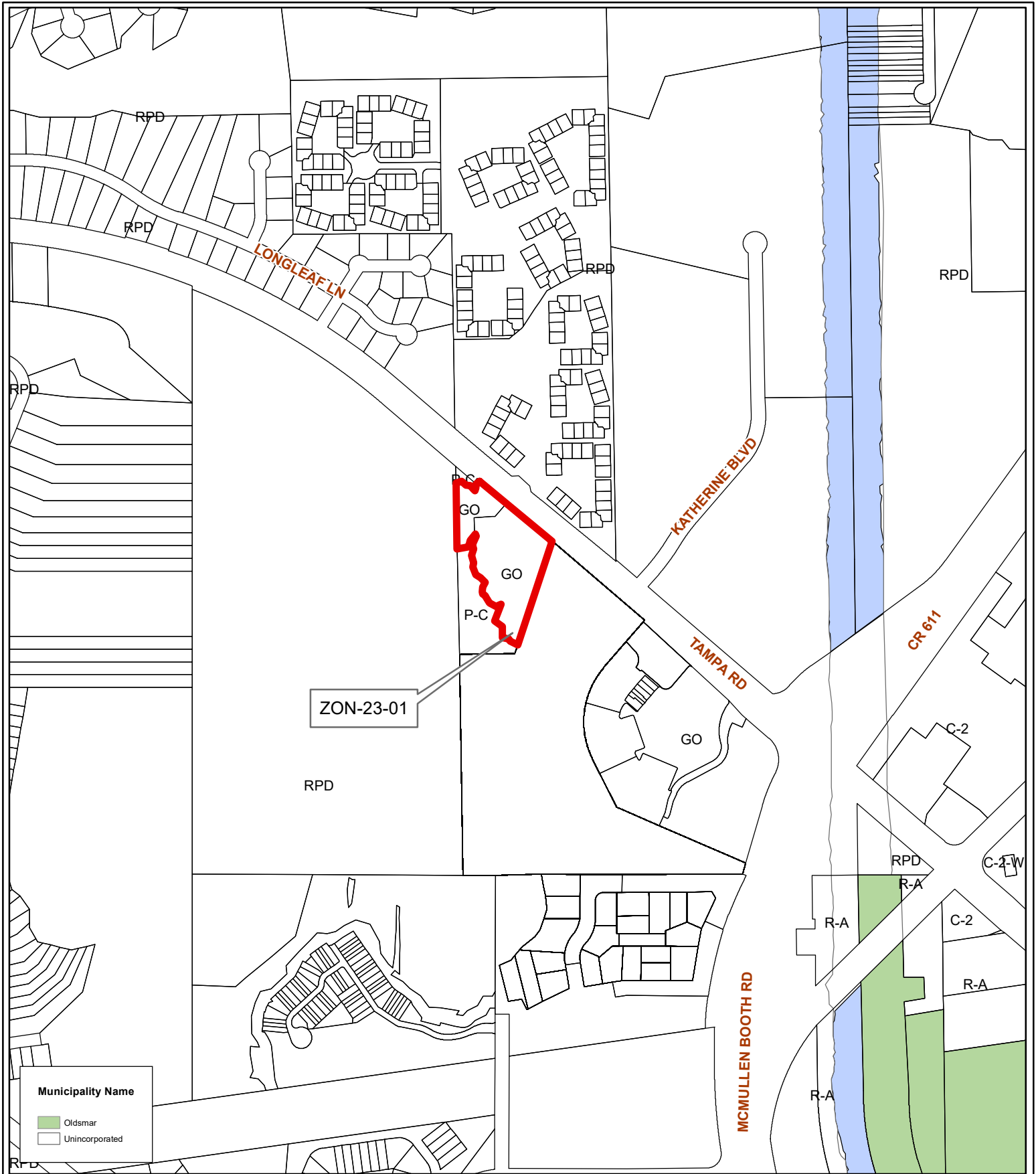
Portions of Parcels 08/28/16/47437/000/0010 & 0020

Prepared by: Housing & Community Development Department



Date: 3/28/2023

1 inch = 0.1 miles



ZON-23-01

Municipal Map

From: GO, General Office
Zoning
To: E-2, Employment-2

Development Agreement allowing up to 23,314 sf of building area for allowable uses (see case file staff report for details).

Portions of Parcels 08/28/16/47437/000/0010 & 0020

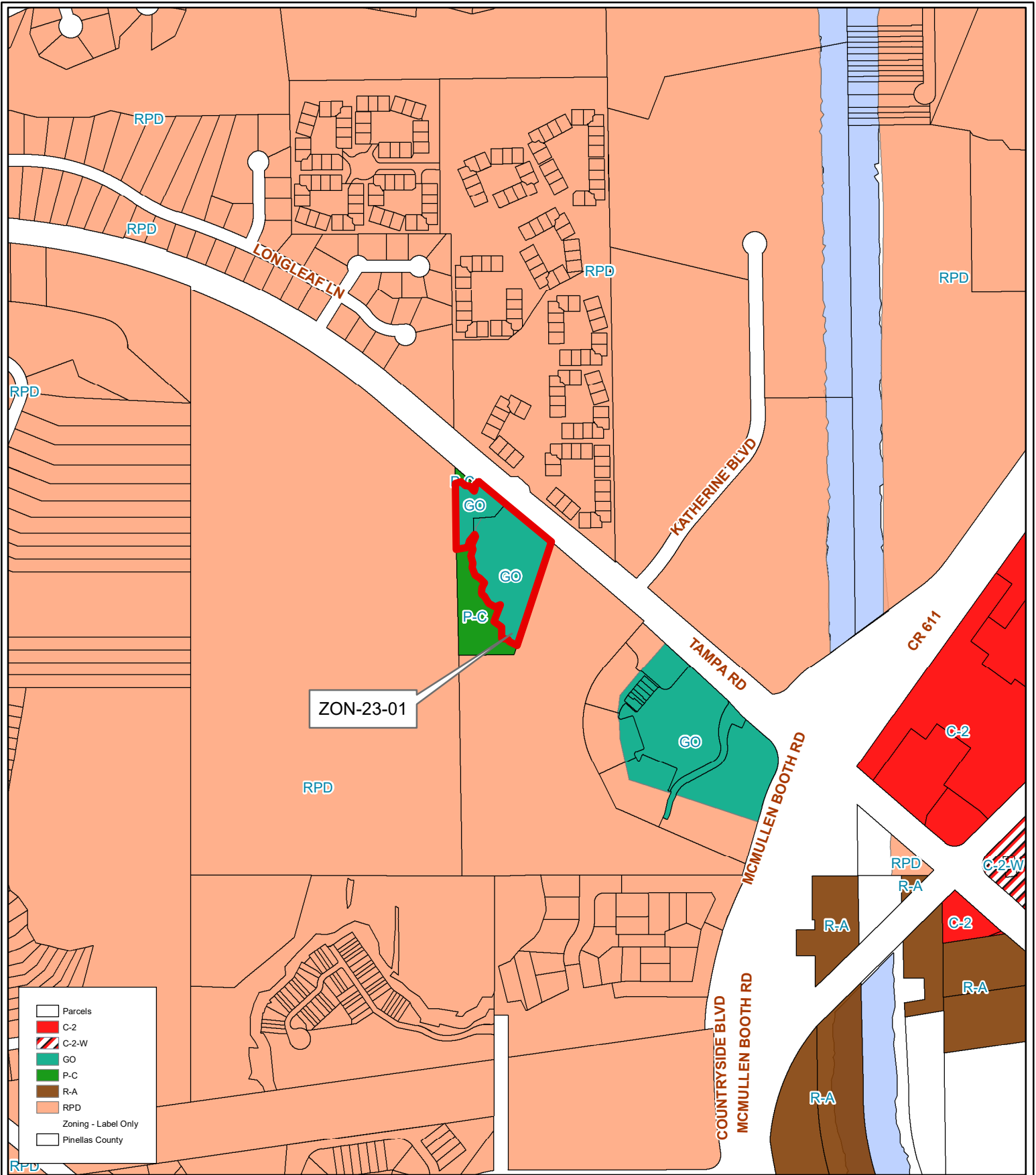
Prepared by: Housing & Community Development Department



Date: 3/28/2023



1 inch = 0.1 miles



- Parcels
- C-2
- C-2-W
- GO
- P-C
- R-A
- RPD
- Zoning - Label Only
- Pinellas County

ZON-23-01

Current Zoning

Zoning

From: GO, General Office

To: E-2, Employment-2

Development Agreement allowing up to 23,314 sf of building area for allowable uses (see case file staff report for details).

Portions of Parcels 08/28/16/47437/000/0010 & 0020

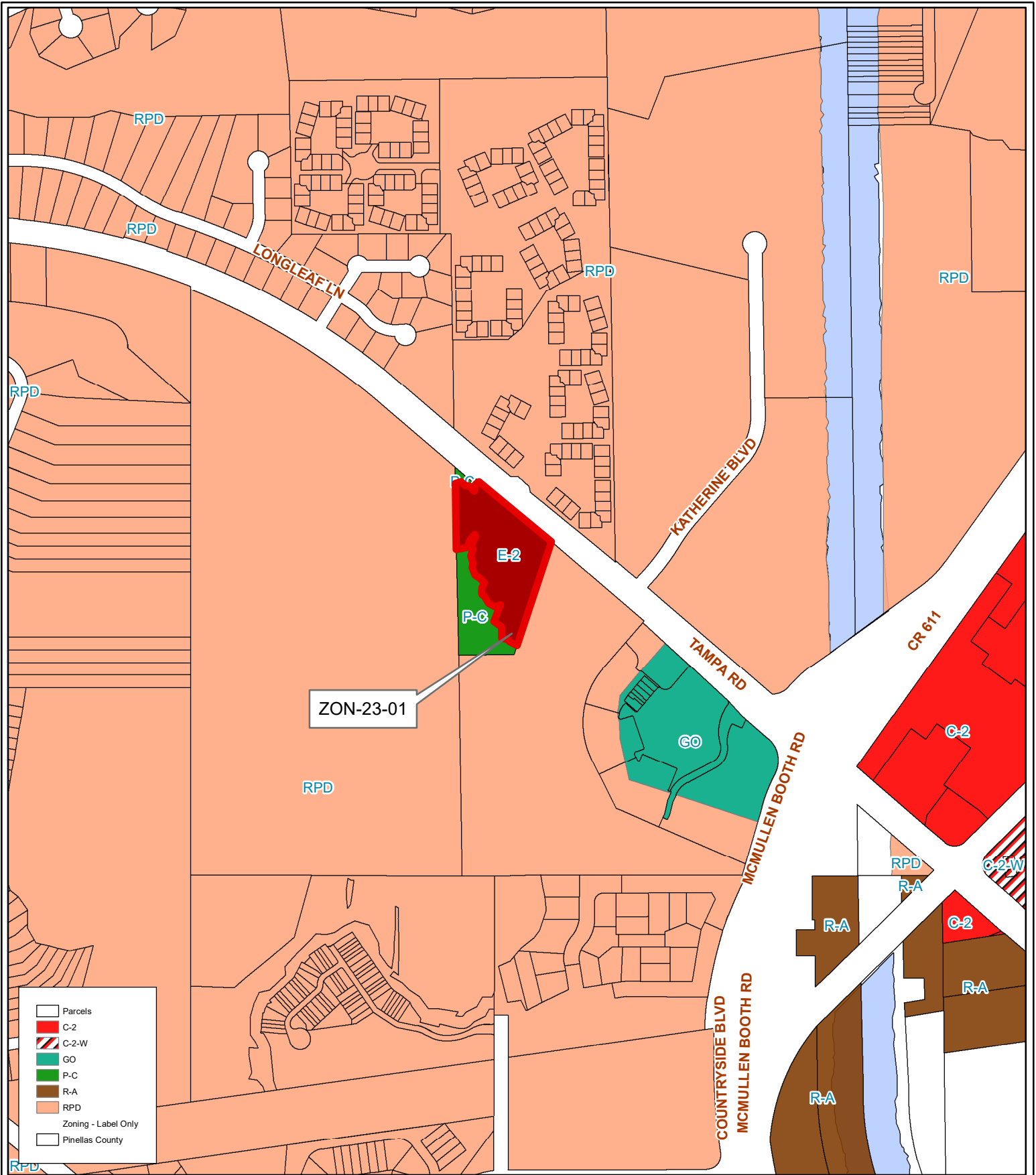
Prepared by: Housing & Community Development Department



Date: 3/28/2023



1 inch = 0.1 miles



- Parcels
- C-2
- C-2-W
- GO
- P-C
- R-A
- RPD
- Zoning - Label Only
- Pinellas County

ZON-23-01

Proposed Zoning

Zoning

From: GO, General Office
To: E-2, Employment-2

Development Agreement allowing up to 23,314 sf of building area for allowable uses (see case file staff report for details).

Portions of Parcels 08/28/16/47437/000/0010 & 0020

Prepared by: Housing & Community Development Department



Date: 3/28/2023



1 inch = 0.1 miles