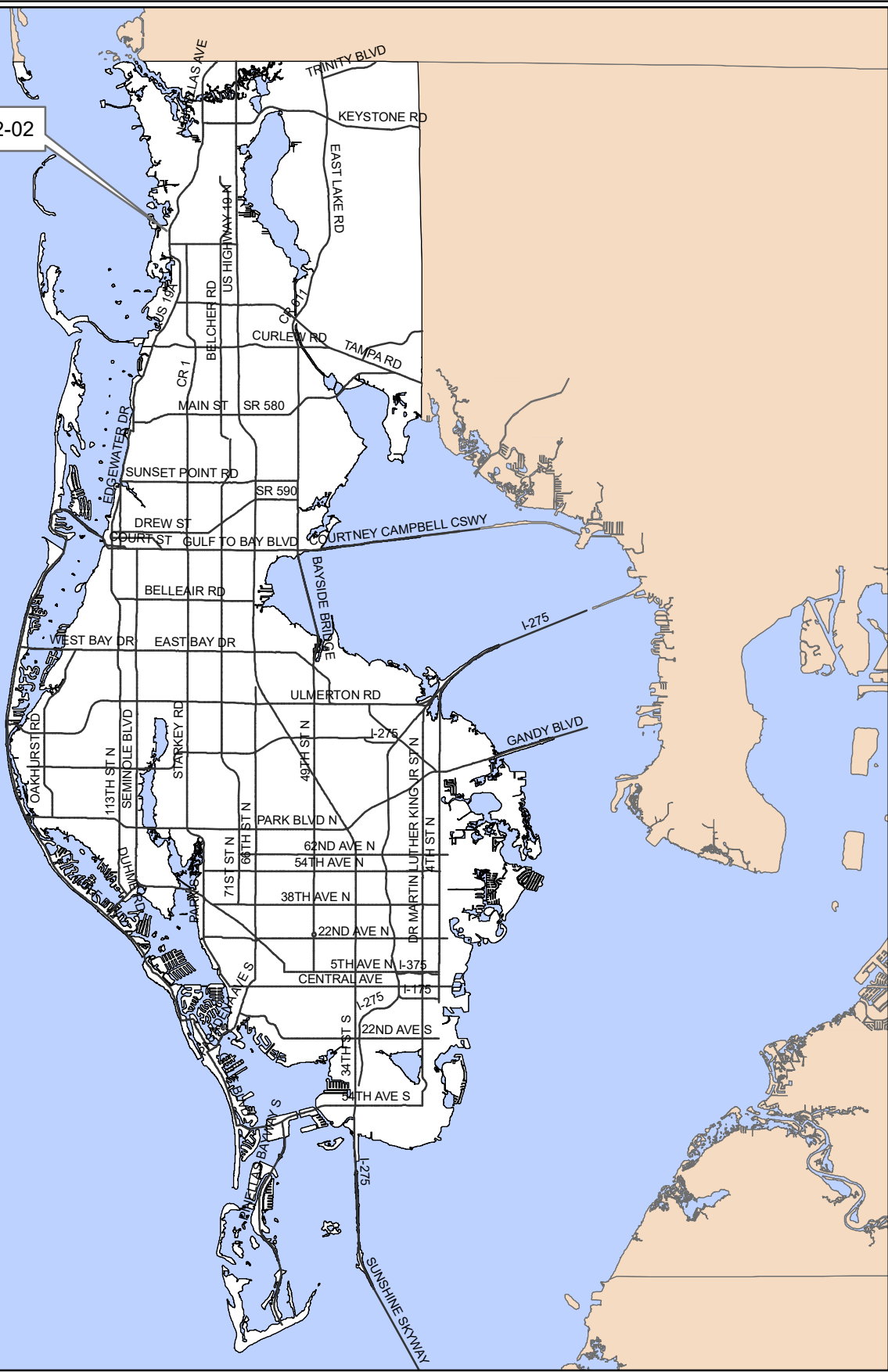


FLU-22-02



Surrounding Counties

FLU-22-02

Location Map

Land Use

From: Residential Urban

To: Residential/Office General



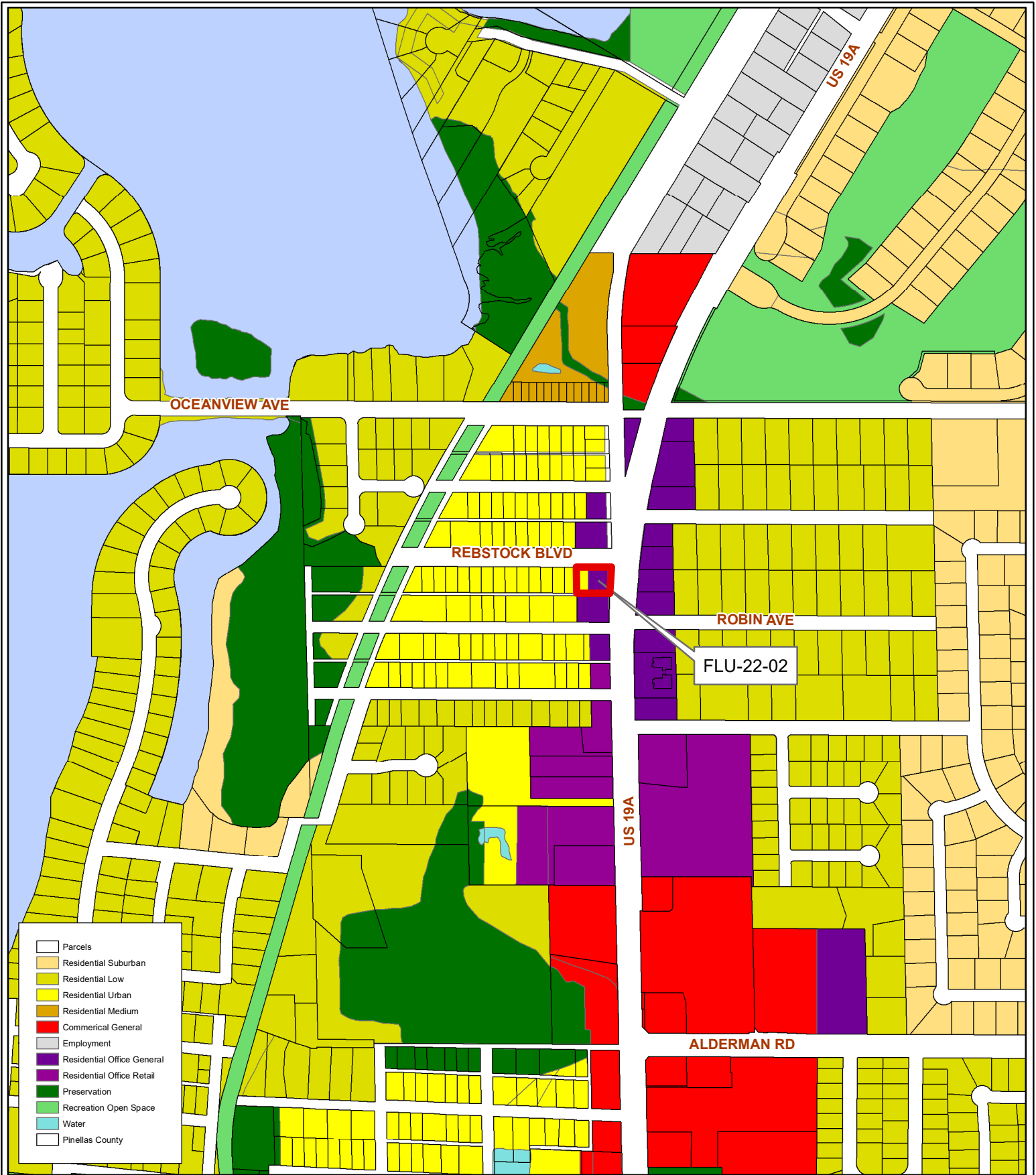
35/27/15/19908/005/0010

Prepared by: Housing & Community Development Department



Date: 4/6/2022

1 inch = 4.5 miles



- Parcels
- Residential Suburban
- Residential Low
- Residential Urban
- Residential Medium
- Commercial General
- Employment
- Residential Office General
- Residential Office Retail
- Preservation
- Recreation Open Space
- Water
- Pinellas County

FLU-22-02
Current Land Use

Land Use
From: Residential Urban
To: Residential/Office General



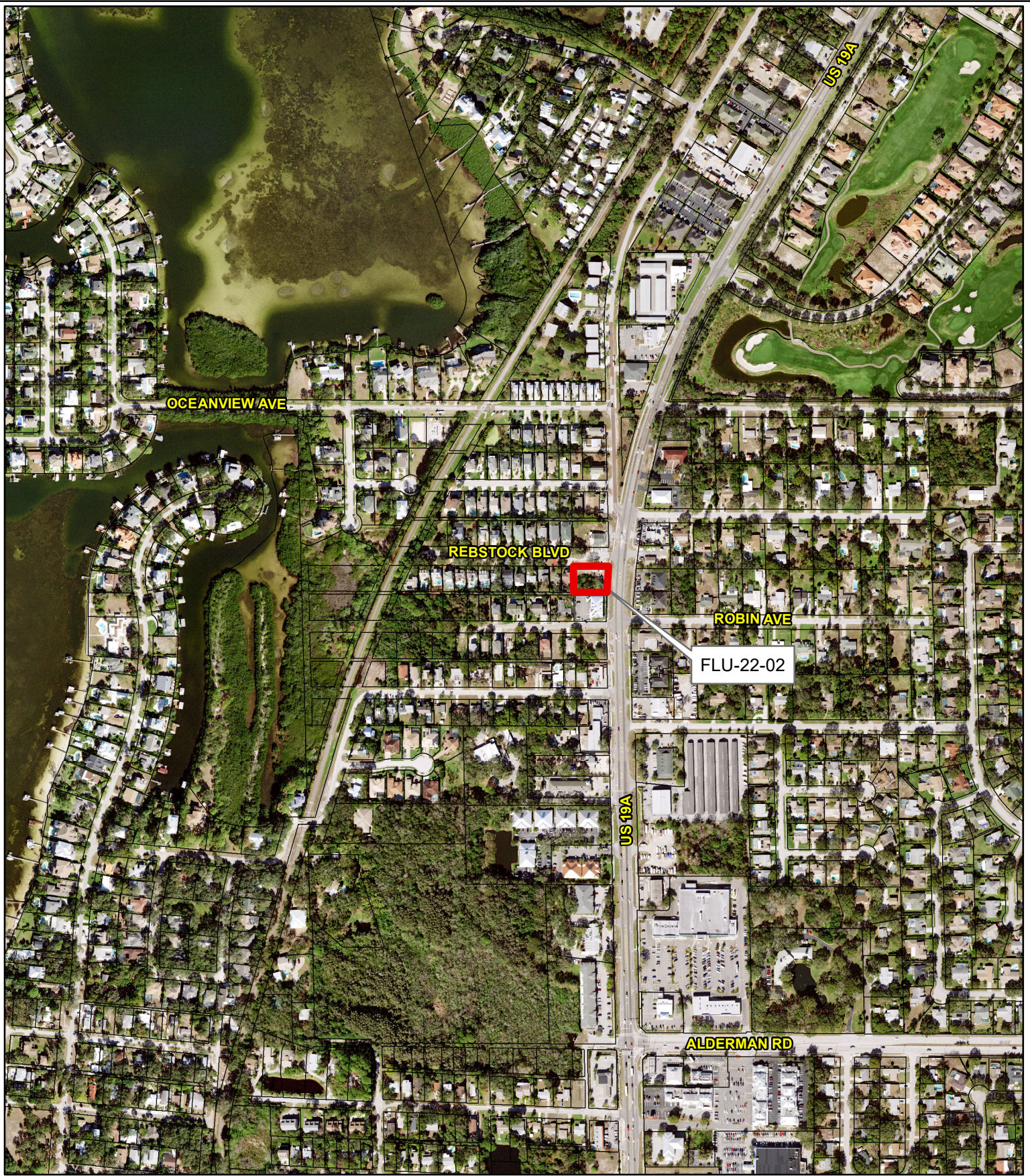
35/27/15/19908/005/0010

Prepared by: Housing & Community Development Department



Date: 4/6/2022

1 inch = 0.1 miles



FLU-22-02

Aerial Map

Land Use

From: Residential Urban

To: Residential/Office General

35/27/15/19908/005/0010

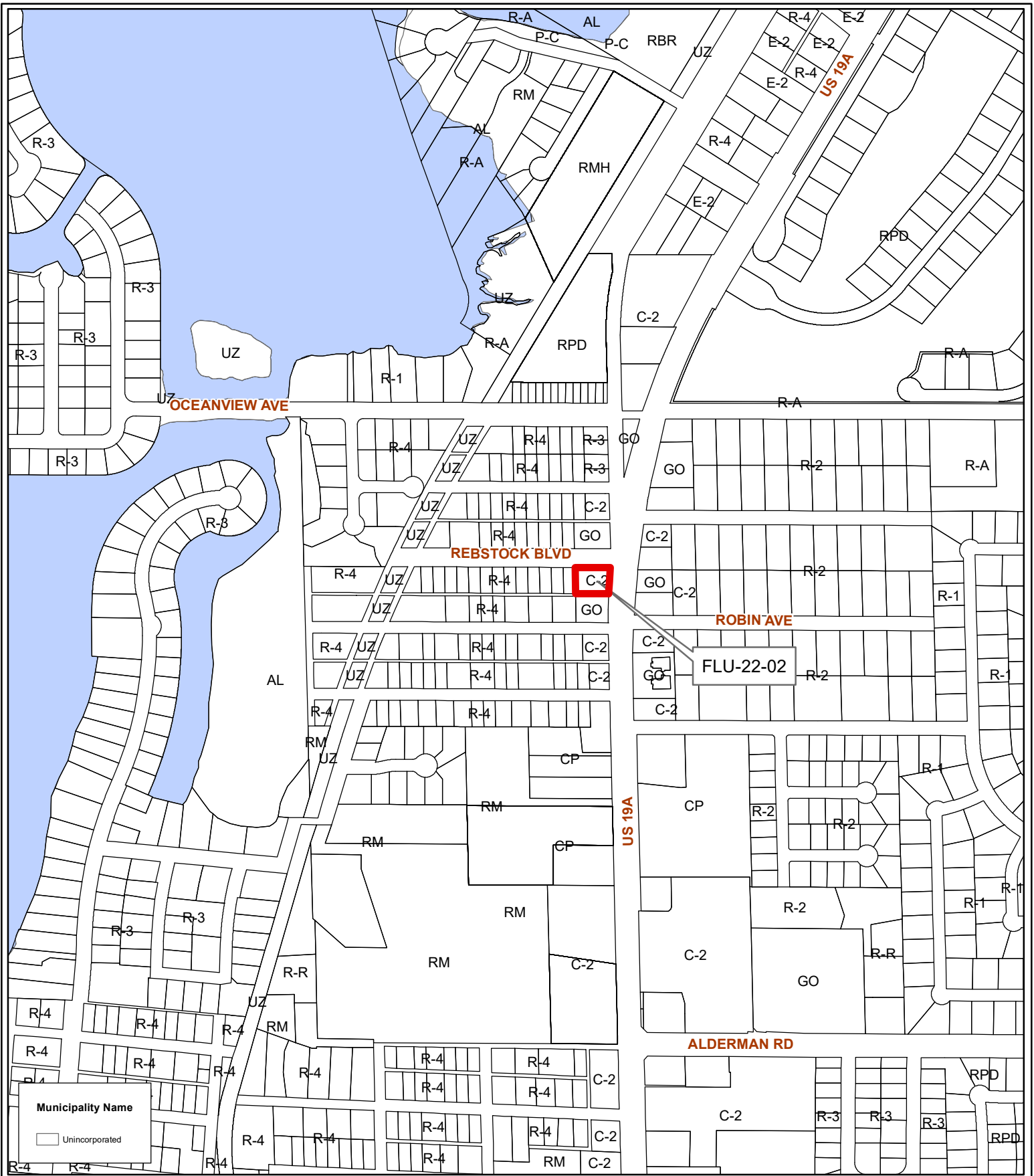
Prepared by: Housing & Community Development Department



Date: 4/6/2022



1 inch = 0.1 miles



Municipality Name
 □ Unincorporated

FLU-22-02
 Municipal Map

From: Residential Urban
Land Use
To: Residential/Office General



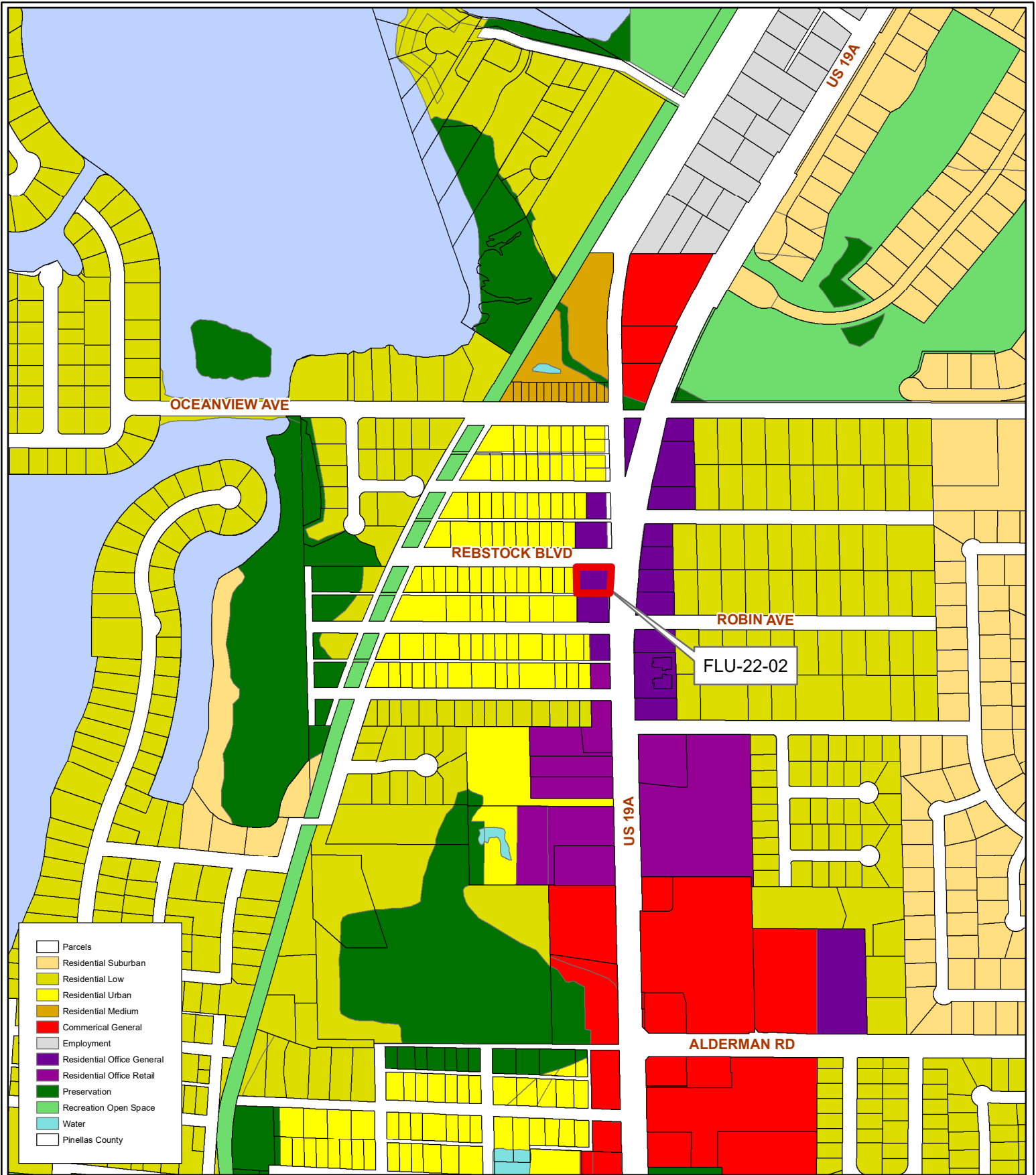
35/27/15/19908/005/0010

Prepared by: Housing & Community Development Department



Date: 4/6/2022

1 inch = 0.1 miles



- Parcels
- Residential Suburban
- Residential Low
- Residential Urban
- Residential Medium
- Commercial General
- Employment
- Residential Office General
- Residential Office Retail
- Preservation
- Recreation Open Space
- Water
- Pinellas County

FLU-22-02	From: Residential Urban Land Use To: Residential/Office General	
Proposed Land Use		
35/27/15/19908/005/0010	NORTH	Date: 4/6/2022 1 inch = 0.1 miles
Prepared by: Housing & Community Development Department		