

Map 1 - Location

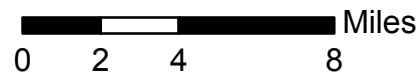
CASE #: CW18-05

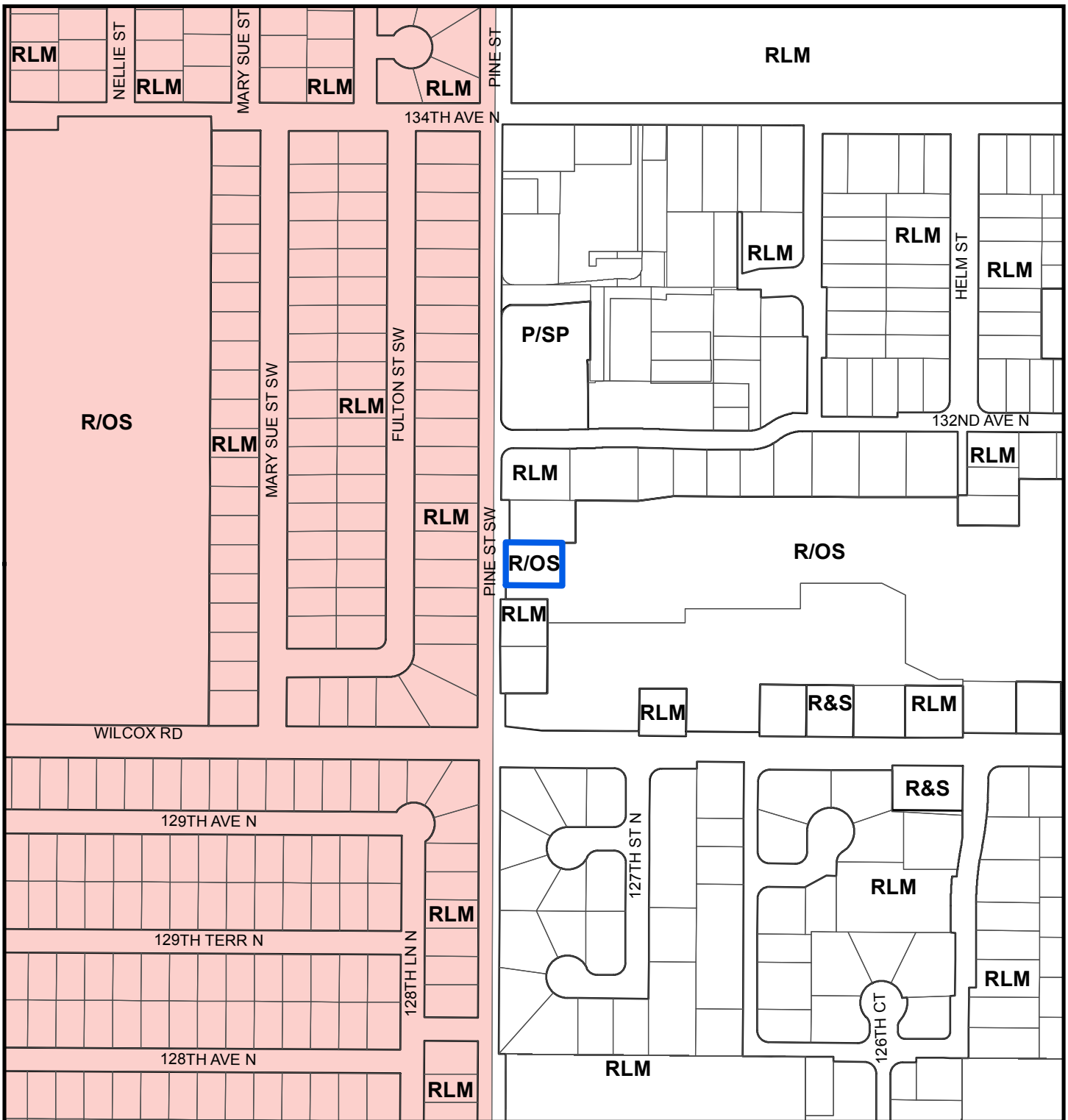
FROM: Recreation/Open Space

AREA: 0.3 Acres

JURISDICTION: Pinellas County

TO: Residential Low Medium





Map 2 - Current Countywide Plan Map & Jurisdictional Map

CASE #: CW18-05

FROM: Recreation/Open Space


AREA: 0.3 Acres

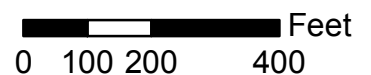
JURISDICTION: Pinellas County

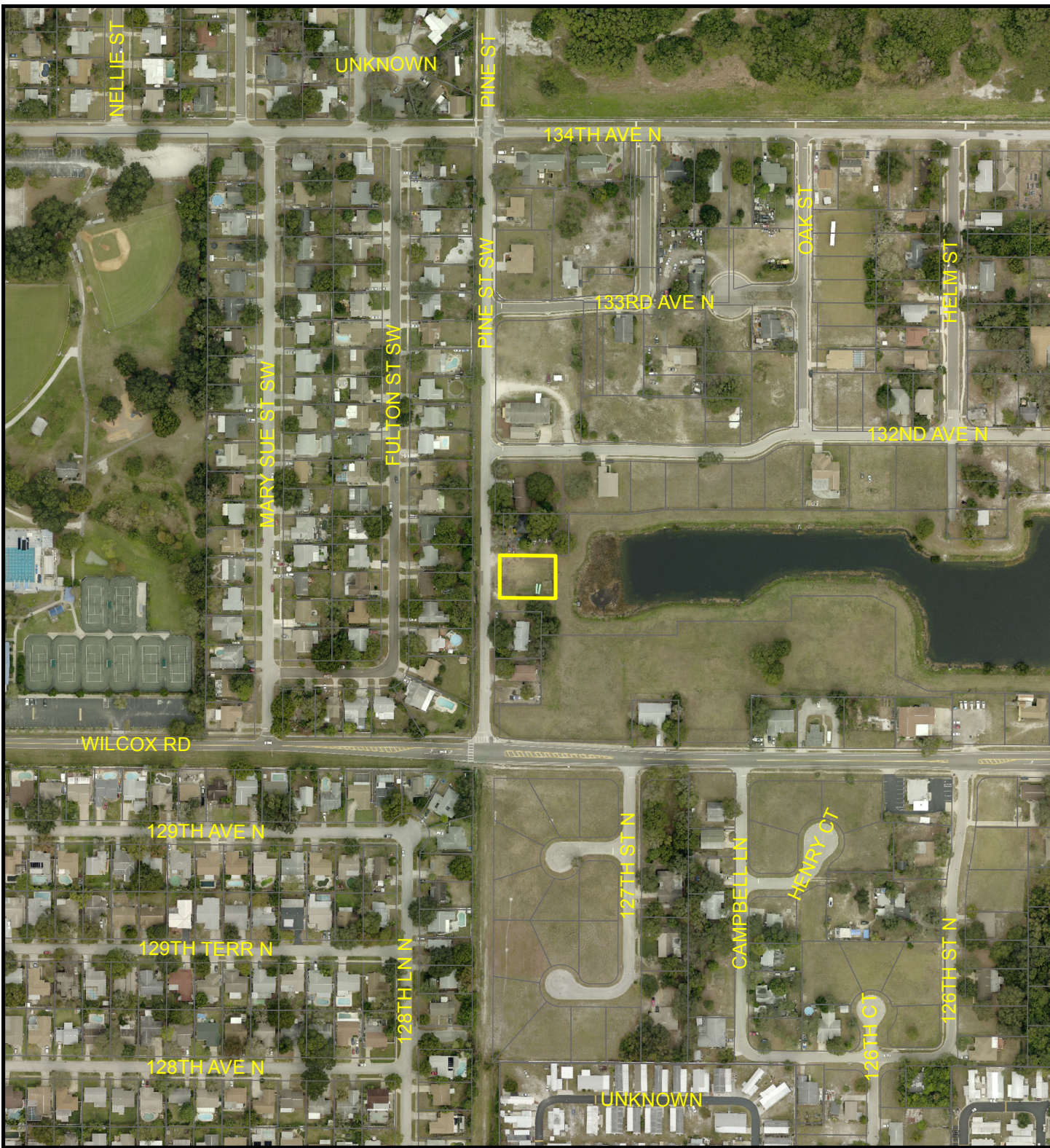
TO: Residential Low Medium

LEGEND:

 Largo

 Unincorporated





Map 3 - Aerial

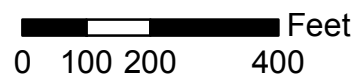
CASE #: CW18-05

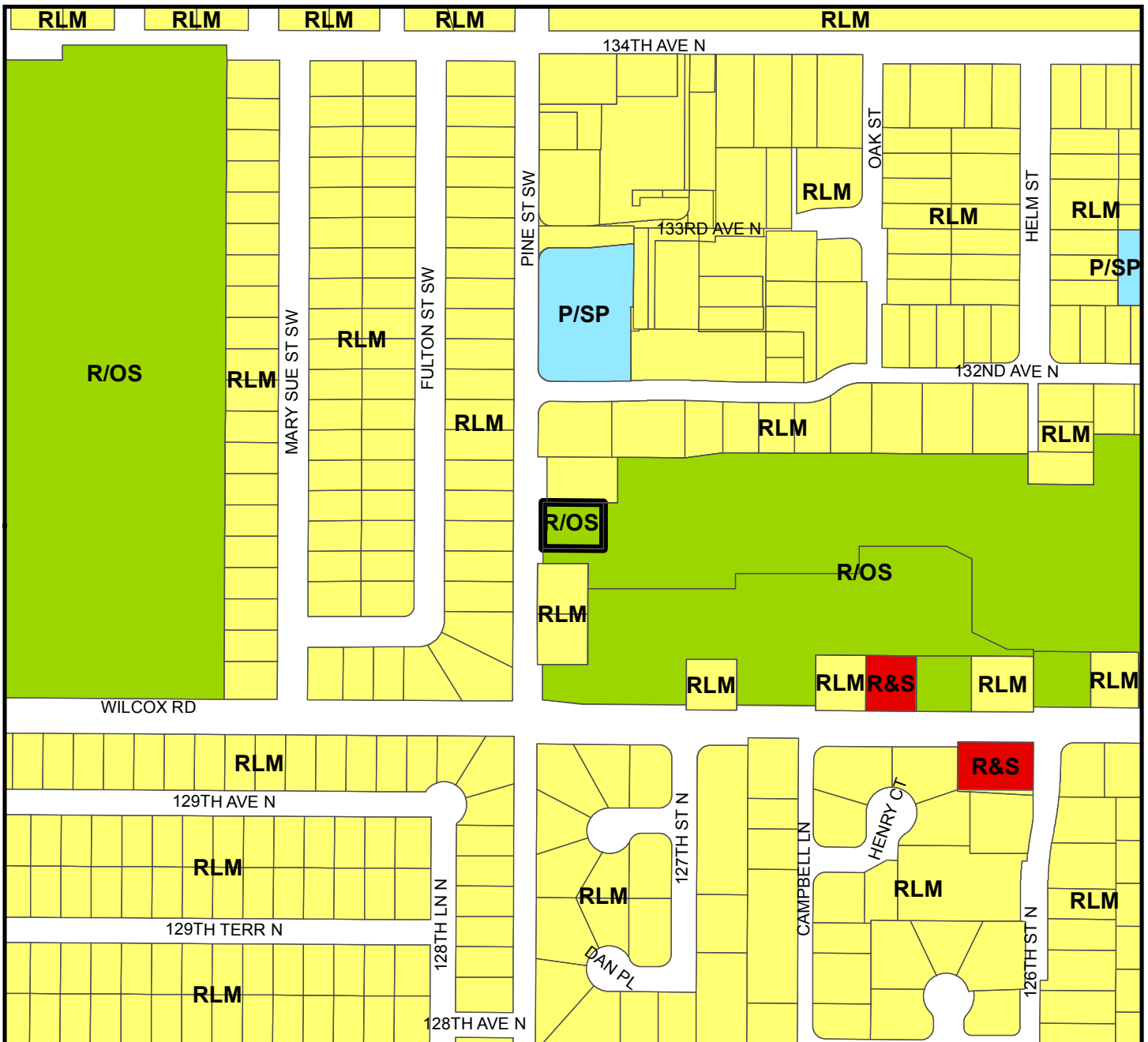
FROM: Recreation/Open Space

AREA: 0.3 Acres

JURISDICTION: Pinellas County

TO: Residential Low Medium





Countywide Plan Map Categories

- Residential Low Medium
- Public/Semi-Public
- Retail & Services
- Recreation/Open Space

Map 4 - Current Countywide Plan Map

CASE #: CW18-05

FROM: Recreation/Open Space

AREA: 0.3 Acres

JURISDICTION: Pinellas County

TO: Residential Low Medium

