

PINELLAS COUNTY
 PUBLIC WORKS
 SURVEY AND MAPPING DIVISION
 22211 U.S. HIGHWAY 19 N.
 CLEARWATER, FLORIDA 33765-2328



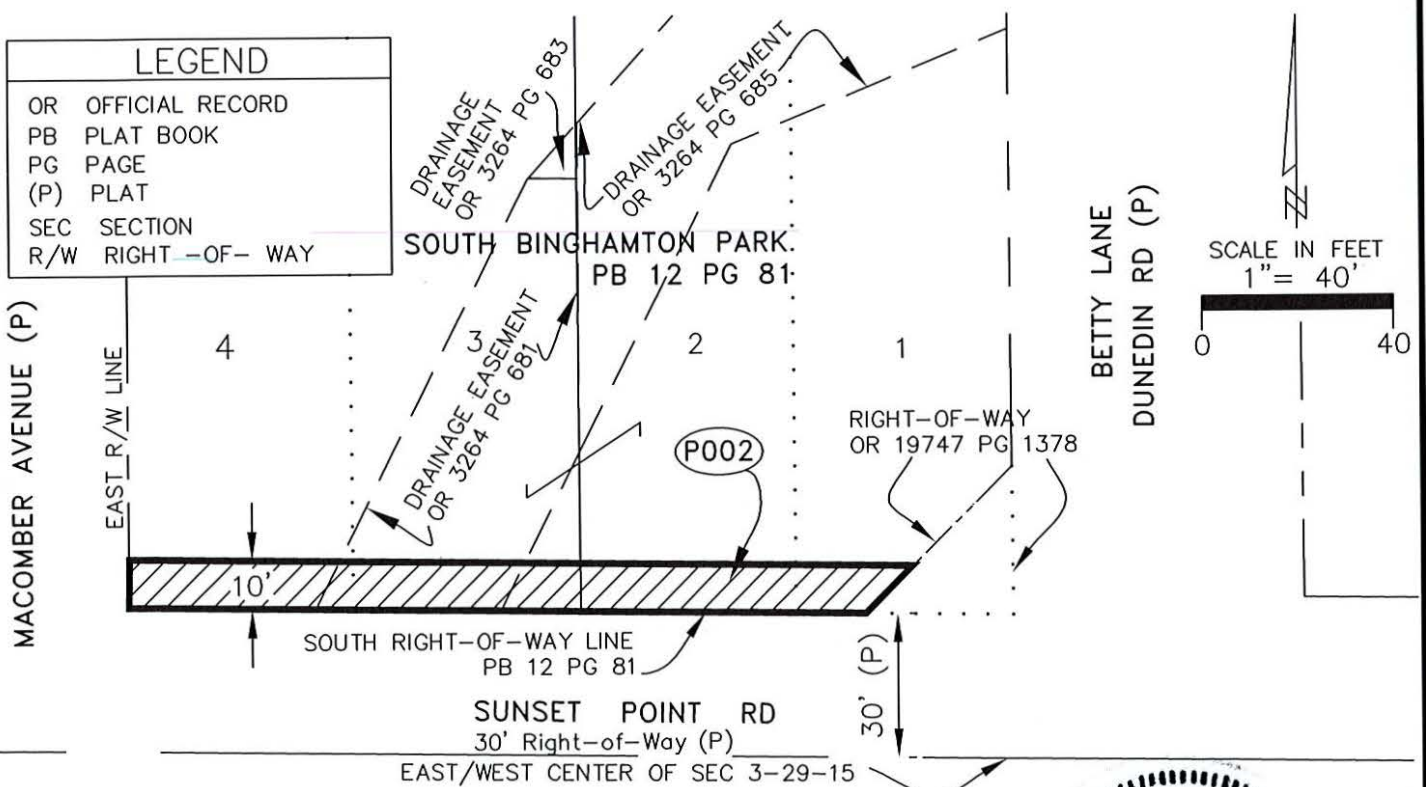
SECTION(S) 3 , TOWNSHIP 29 SOUTH, RANGE 15 EAST
 DESCRIPTION

An irregular shaped tract of land being a portion of Lots 1 thru 4, SOUTH BINGHAMTON PARK Subdivision according to Plat Book 12, Pages 81, public records of Pinellas County, Florida, lying within Section 3 Township 29 South, Range 15 East being more particularly described as follows:

The South 10 feet of Lots 1 thru 4, of said SOUTH BINGHAMTON PARK Subdivision, less and except the Right-of-Way recorded in Official Record 19747, Page 1378, lying within Section 3 Township 29 South, Range 15 East.

CONTAINING: 1605 square feet or 0.037 acres more or less.

SKETCH--NOT A SURVEY



Additions or deletions by other than the Professional Land Surveyor in responsible charge are prohibited. Land Description is invalid without signature and/or embossed seal of the Professional Land Surveyor.

CALCULATED BY: DMcD	The above Sketch and/or Land description was prepared under my supervision and is true and correct to the best of my knowledge and belief.
CHECKED BY: GD	
S.F.N.: 2067	By: Pinellas County Survey and Mapping Division DATE 12/13/2017 JAMES E. NEAL, PROFESSIONAL SURVEYOR AND MAPPER LICENSE NUMBER: 68901 STATE OF FLORIDA, PHONE # (727) 464-8904

