

Board of County Commissioners

Board Chair: Dave Eggers, Chair

OMB Budget Analysts: Chris Rose, Rufus Barfield III

Department Purpose

The Board of County Commissioners (BCC) is the chief legislative and governing body for Pinellas County. The BCC formulates policy and strategy and directs the County Administrator to implement these policies and the Strategic Plan. As such, the accomplishments and strategic initiatives attributed to each of the departments under the County Administrator are a direct result of the guidance provided by the BCC. The BCC consists of seven commissioners elected by the voters of Pinellas County for terms of four years each. The composition of the BCC is four members elected from single districts and three members elected as at-large members.

Budget Summary

0001- General Fund

	FY23 Actual	FY24 Actual	FY25 Actual	FY26 Budget	FY27 Budget
Personnel Services	\$2,309,061	\$2,420,896	\$2,455,221	\$2,727,870	\$2,533,390
Operating Expenses	\$79,871	\$47,645	\$55,847	\$84,580	\$84,580
Grand Total	\$2,388,932	\$2,468,541	\$2,511,069	\$2,812,450	\$2,617,970

	FY23 Actual	FY24 Actual	FY25 Actual	FY26 Budget	FY27 Budget
FTE	15.0	15.0	15.0	14.0	14.0

Budget Drivers

The FY27 Budget for the Board of County Commissioners is entirely within the General Fund and decreases by \$195,000 (6.9%) to \$2.617M.

Personnel Services decreases \$195,000 (7.1%) to \$2.533M. The primary change to Personnel Services is removal of an FY26 assumption of the State-determined salary increase for elected positions and Florida Retirement System (FRS) actuarial retirement contributions. This budget also includes \$29,000 for a retirement payout in FY27. The number of FTE remains flat at 14.0. This budget does not include a salary increase for either elected or non-elected positions.

Each District office budget remains flat at \$11,440, except for District 7, which has \$3,500 in additional funding for travel associated with the Florida Association of Counties (FAC).

FY27 Decision Packages

The BCC did not submit any Decision Packages.

FY26 Accomplishments

The Board's accomplishments can be found in the 2025 Accomplishments report at:
<https://pinellas.gov/accomplishments-reports/2025> .

Summary of Proposed Changes to User Fees for FY27

- The BCC does not request changes to their User Fees. The Board of County Commissioners has user fees common to all Departments (such as dishonored check fee and charges for public records requests).

Budget Summary by Program and Fund

Board of County Commissioners

Legislative and governing body of Pinellas County. Comprised of seven members responsible for establishing policies to protect the health, safety, and general welfare of Pinellas County residents.

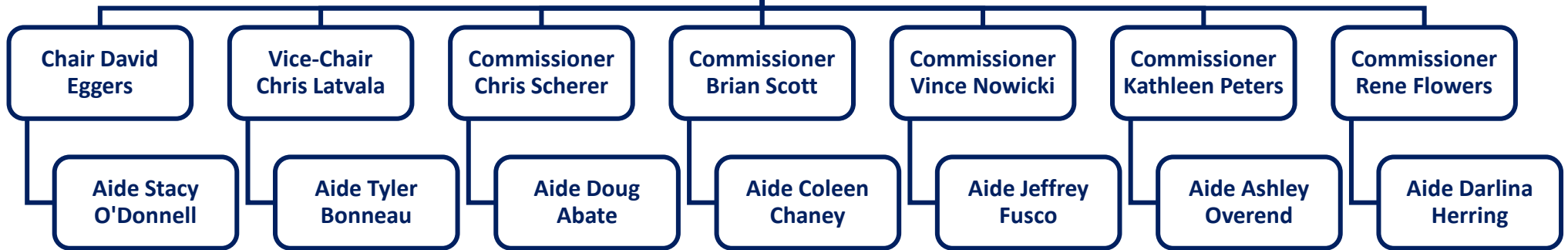
	FY23 Actual	FY24 Actual	FY25 Actual	FY26 Budget	FY27 Budget
General Fund	\$2,388,932	\$2,468,541	\$2,511,069	\$2,812,450	\$2,617,970
Grand Total	\$2,388,932	\$2,468,541	\$2,511,069	\$2,812,450	\$2,617,970

	FY23 Actual	FY24 Actual	FY25 Actual	FY26 Budget	FY27 Budget
FTE	15.0	15.0	15.0	14.0	14.0

Attachments:

1. Organizational Chart (pg.3)
2. FY27 BCC Budget Request by District - Expenditures (pgs. 4-11)
3. User Fees Report (p.12)

Citizens of Pinellas County



**Pinellas County
Standard Detail
Center: 111010 - BCC Districts- Shared**

Expenditures

Account	FY23 Actual	FY24 Actual	FY25 Actual	FY26 Budget	FY27 Request	Budget to Budget Change	Budget to Budget % Change
5110001 - Executive Salaries	1,402,597	1,453,961	1,438,782	1,583,610	1,522,040	(61,570)	-3.89%
5120001 - Regular Salaries & Wages	4,017	0	35,850	0	0	0	0.00%
5210001 - FICA Taxes	104,271	108,089	109,788	121,140	116,390	(4,750)	-3.92%
5220001 - Retirement Contributions	529,399	573,664	586,094	734,150	602,330	(131,820)	-17.96%
5230001 - Hlth,Life,Dntl,Std,Ltd	268,927	285,183	284,707	288,970	292,630	3,660	1.27%
5310001 - Professional Services	0	0	0	0	0	0	0.00%
5400100 - Transportation Exp	0	0	708	0	0	0	0.00%
5400110 - Mileage-Out of Town	0	322	0	0	0	0	0.00%
5400200 - Meals/Per Diem	0	160	0	0	0	0	0.00%
5400300 - Hotels/Motels/Lodging	0	0	0	0	0	0	0.00%
5400900 - Travel-Other	0	(187)	0	0	0	0	0.00%
5410001 - Communication Services	2,565	1,731	(36)	0	0	0	0.00%
5464000 - Repair&Maint-Equipment	587	533	413	0	0	0	0.00%
5470001 - Printing and Binding Exp	1,259	301	414	0	0	0	0.00%
5480001 - Promotional Activities Exp	6,417	0	0	0	0	0	0.00%
5490001 - Othr Current Chgs&Obligat	978	0	0	0	0	0	0.00%
5490060 - Incentives & Awards	612	0	0	0	0	0	0.00%
5490070 - Employee Celebrations & Recognition	0	86	0	0	0	0	0.00%
5496551 - Intgv Sv-Risk Financing	13,010	0	0	0	0	0	0.00%
5510001 - Office Supplies Exp	4,276	482	444	1,000	1,000	0	0.00%
5520001 - Operating Supplies Exp	40	0	0	0	0	0	0.00%
5520098 - PC Purchases under \$5,000	1,905	3,196	20,269	0	0	0	0.00%
5540001 - Bks,Pub,Subscrp&Membrshps	2,000	0	0	0	0	0	0.00%
5550001 - Training&Education Costs	750	0	0	0	0	0	0.00%
Expenditures Total	2,343,611	2,427,519	2,477,432	2,728,870	2,534,390	(194,480)	-7.13%

**Pinellas County
Standard Detail
Center: 111010 - BCC Districts- Shared**

Expenditures

Account	FY23 Actual	FY24 Actual	FY25 Actual	FY26 Budget	FY27 Request	Budget to Budget Change	Budget to Budget % Change
5110001 - Executive Salaries	0	0	0	0	0	0	0.00%
5210001 - FICA Taxes	0	0	0	0	0	0	0.00%
5220001 - Retirement Contributions	0	0	0	0	0	0	0.00%
5230001 - Hlth,Life,Dntl,Std,Ltd	0	0	0	0	0	0	0.00%
5310001 - Professional Services	0	0	0	11,440	11,440	0	0.00%
5400100 - Transportation Exp	633	0	727	0	0	0	0.00%
5400105 - Mileage-Local	996	2,106	0	0	0	0	0.00%
5400110 - Mileage-Out of Town	0	0	0	0	0	0	0.00%
5400200 - Meals/Per Diem	0	0	457	0	0	0	0.00%
5400300 - Hotels/Motels/Lodging	2,096	2,504	1,533	0	0	0	0.00%
5400900 - Travel-Other	149	75	0	0	0	0	0.00%
5410001 - Communication Services	405	783	102	0	0	0	0.00%
5420002 - Postage	104	21	0	0	0	0	0.00%
5460001 - Repair&Maintenance Svcs	0	0	0	0	0	0	0.00%
5464000 - Repair&Maint-Equipment	0	0	0	0	0	0	0.00%
5470001 - Printing and Binding Exp	100	122	248	0	0	0	0.00%
5490001 - Othr Current Chgs&Obligat	0	0	1,583	0	0	0	0.00%
5510001 - Office Supplies Exp	599	0	0	0	0	0	0.00%
5520098 - PC Purchases under \$5,000	0	245	0	0	0	0	0.00%
5540001 - Bks,Pub,Subscrp&Membrshps	823	0	0	0	0	0	0.00%
5550001 - Training&Education Costs	2,652	2,030	0	0	0	0	0.00%
Expenditures Total	8,556	7,886	4,650	11,440	11,440	0	0.00%

**Pinellas County
Standard Detail
Center: 111010 - BCC Districts- Shared**

Expenditures

Account	FY23 Actual	FY24 Actual	FY25 Actual	FY26 Budget	FY27 Request	Budget to Budget Change	Budget to Budget % Change
5110001 - Executive Salaries	0	0	0	0	0	0	0.00%
5120001 - Regular Salaries & Wages	(150)	0	0	0	0	0	0.00%
5310001 - Professional Services	1,205	1,105	0	11,440	11,440	0	0.00%
5400100 - Transportation Exp	408	385	0	0	0	0	0.00%
5400105 - Mileage-Local	0	0	0	0	0	0	0.00%
5400110 - Mileage-Out of Town	0	448	0	0	0	0	0.00%
5400200 - Meals/Per Diem	288	536	325	0	0	0	0.00%
5400300 - Hotels/Motels/Lodging	0	2,679	1,971	0	0	0	0.00%
5400900 - Travel-Other	70	256	63	0	0	0	0.00%
5410001 - Communication Services	244	0	801	0	0	0	0.00%
5420002 - Postage	45	19	96	0	0	0	0.00%
5464000 - Repair&Maint-Equipment	0	0	2	0	0	0	0.00%
5470001 - Printing and Binding Exp	379	32	72	0	0	0	0.00%
5490001 - Othr Current Chgs&Obligat	110	0	0	0	0	0	0.00%
5510001 - Office Supplies Exp	753	14	0	0	0	0	0.00%
5520001 - Operating Supplies Exp	0	0	607	0	0	0	0.00%
5540001 - Bks, Pub, Subscrp&Membrshps	0	95	0	0	0	0	0.00%
5550001 - Training&Education Costs	0	1,487	0	0	0	0	0.00%
Expenditures Total	3,352	7,057	3,937	11,440	11,440	0	0.00%

**Pinellas County
Standard Detail
Center: 111010 - BCC Districts- Shared**

Expenditures

Account	FY23 Actual	FY24 Actual	FY25 Actual	FY26 Budget	FY27 Request	Budget to Budget Change	Budget to Budget % Change
5310001 - Professional Services	0	0	0	11,440	11,440	0	0.00%
5400100 - Transportation Exp	1,038	332	(52)	0	0	0	0.00%
5400110 - Mileage-Out of Town	0	0	0	0	0	0	0.00%
5400200 - Meals/Per Diem	745	565	200	0	0	0	0.00%
5400300 - Hotels/Motels/Lodging	2,515	2,094	407	0	0	0	0.00%
5400900 - Travel-Other	377	392	0	0	0	0	0.00%
5410001 - Communication Services	0	0	38	0	0	0	0.00%
5420002 - Postage	754	669	25	0	0	0	0.00%
5464000 - Repair&Maint-Equipment	0	0	1	0	0	0	0.00%
5470001 - Printing and Binding Exp	328	246	125	0	0	0	0.00%
5490001 - Othr Current Chgs&Obligat	0	172	0	0	0	0	0.00%
5510001 - Office Supplies Exp	167	0	0	0	0	0	0.00%
5520006 - Oper. Supplies-Clothing	0	0	312	0	0	0	0.00%
5520098 - PC Purchases under \$5,000	0	0	60	0	0	0	0.00%
5540001 - Bks, Pub, Subscrp&Membshps	802	280	49	0	0	0	0.00%
5550001 - Training&Education Costs	1,585	2,169	0	0	0	0	0.00%
Expenditures Total	8,310	6,919	1,165	11,440	11,440	0	0.00%

**Pinellas County
Standard Detail
Center: 111010 - BCC Districts- Shared**

Expenditures

Account	FY23 Actual	FY24 Actual	FY25 Actual	FY26 Budget	FY27 Request	Budget to Budget Change	Budget to Budget % Change
5310001 - Professional Services	0	0	0	11,440	11,440	0	0.00%
5400110 - Mileage-Out of Town	0	0	131	0	0	0	0.00%
5400200 - Meals/Per Diem	0	0	91	0	0	0	0.00%
5400300 - Hotels/Motels/Lodging	0	0	404	0	0	0	0.00%
5400900 - Travel-Other	0	0	500	0	0	0	0.00%
5420002 - Postage	10	13	30	0	0	0	0.00%
5464000 - Repair&Maint-Equipment	0	0	612	0	0	0	0.00%
5470001 - Printing and Binding Exp	20	7	8	0	0	0	0.00%
5510001 - Office Supplies Exp	0	10	0	0	0	0	0.00%
5550001 - Training&Education Costs	0	0	0	0	0	0	0.00%
Expenditures Total	30	31	1,776	11,440	11,440	0	0.00%

**Pinellas County
Standard Detail
Center: 111010 - BCC Districts- Shared**

Expenditures

Account	FY23 Actual	FY24 Actual	FY25 Actual	FY26 Budget	FY27 Request	Budget to Budget Change	Budget to Budget % Change
5310001 - Professional Services	0	0	0	11,440	11,440	0	0.00%
5400105 - Mileage-Local	122	278	0	0	0	0	0.00%
5400110 - Mileage-Out of Town	117	0	134	0	0	0	0.00%
5400300 - Hotels/Motels/Lodging	2,206	2,938	2,224	0	0	0	0.00%
5400900 - Travel-Other	0	(58)	7	0	0	0	0.00%
5420002 - Postage	63	5	28	0	0	0	0.00%
5464000 - Repair&Maint-Equipment	0	0	1	0	0	0	0.00%
5470001 - Printing and Binding Exp	156	0	0	0	0	0	0.00%
5480001 - Promotional Activities Exp	346	109	0	0	0	0	0.00%
5490001 - Othr Current Chgs&Obligat	887	0	0	0	0	0	0.00%
5510001 - Office Supplies Exp	653	478	94	0	0	0	0.00%
5550001 - Training&Education Costs	1,092	2,040	4,247	0	0	0	0.00%
Expenditures Total	5,643	5,791	6,735	11,440	11,440	0	0.00%

**Pinellas County
Standard Detail
Center: 111010 - BCC Districts- Shared**

Expenditures

Account	FY23 Actual	FY24 Actual	FY25 Actual	FY26 Budget	FY27 Request	Budget to Budget Change	Budget to Budget % Change
5110001 - Executive Salaries	0	0	0	0	0	0	0.00%
5310001 - Professional Services	0	0	0	11,440	11,440	0	0.00%
5400100 - Transportation Exp	1,278	0	0	0	0	0	0.00%
5400105 - Mileage-Local	155	0	0	0	0	0	0.00%
5400110 - Mileage-Out of Town	0	285	0	0	0	0	0.00%
5400200 - Meals/Per Diem	0	267	0	0	0	0	0.00%
5400300 - Hotels/Motels/Lodging	775	912	0	0	0	0	0.00%
5400900 - Travel-Other	1,424	169	0	0	0	0	0.00%
5410001 - Communication Services	0	0	801	0	0	0	0.00%
5420001 - Freight	0	0	15	0	0	0	0.00%
5420002 - Postage	3	53	32	0	0	0	0.00%
5464000 - Repair&Maint-Equipment	0	0	0	0	0	0	0.00%
5470001 - Printing and Binding Exp	0	130	4	0	0	0	0.00%
5510001 - Office Supplies Exp	0	9	575	0	0	0	0.00%
5520098 - PC Purchases under \$5,000	0	(0)	0	0	0	0	0.00%
5550001 - Training&Education Costs	2,780	1,025	0	0	0	0	0.00%
Expenditures Total	6,415	2,851	1,428	11,440	11,440	0	0.00%

**Pinellas County
Standard Detail
Center: 111010 - BCC Districts- Shared**

Expenditures

Account	FY23 Actual	FY24 Actual	FY25 Actual	FY26 Budget	FY27 Request	Budget to Budget Change	Budget to Budget % Change
5310001 - Professional Services	0	0	0	11,440	11,440	0	0.00%
5400001 - Travel and Per Diem	0	0	0	3,500	3,500	0	0.00%
5400100 - Transportation Exp	742	0	(897)	0	0	0	0.00%
5400105 - Mileage-Local	124	0	0	0	0	0	0.00%
5400200 - Meals/Per Diem	554	0	0	0	0	0	0.00%
5400300 - Hotels/Motels/Lodging	4,151	2,237	3,227	0	0	0	0.00%
5400900 - Travel-Other	703	316	2,126	0	0	0	0.00%
5420002 - Postage	32	8	33	0	0	0	0.00%
5440001 - Rentals and Leases	0	184	0	0	0	0	0.00%
5464000 - Repair&Maint-Equipment	0	0	3	0	0	0	0.00%
5470001 - Printing and Binding Exp	236	46	26	0	0	0	0.00%
5490001 - Othr Current Chgs&Obligat	0	0	0	0	0	0	0.00%
5510001 - Office Supplies Exp	1,346	1,762	1,623	0	0	0	0.00%
5520001 - Operating Supplies Exp	0	0	301	0	0	0	0.00%
5540001 - Bks, Pub, Subscrp&Membshps	200	0	18	0	0	0	0.00%
5550001 - Training&Education Costs	4,925	5,935	7,485	0	0	0	0.00%
Expenditures Total	13,014	10,487	13,946	14,940	14,940	0	0.00%

Fee Schedule:

Board of County Commissioners	FY26 Adopted
<p>I. Dishonored Check Fee</p> <p>In accordance with Sections 125.0105 and 832.08(5), F.S., a service fee for the collection of a dishonored check, draft, or other order will be charged as follows, whichever is greater:</p> <ul style="list-style-type: none"> I-A. Face value of check: <ul style="list-style-type: none"> I-A-1. Does not exceed \$50.00. \$25.00 I-A-2. Is more than \$50.00, but does not exceed \$300.00. \$30.00 I-A-3. Is more than \$300.00, but does not exceed \$800.00. \$40.00 I-A-4. Is more than \$800.00. 5% of Face Value of the Check 	
<p>II. Duplication Charges for Public Records</p> <ul style="list-style-type: none"> II-A-1. One-sided copy no more than 8 ½" x 14" \$0.15 II-A-2. Two-sided copy no more than 8 ½" x 14" \$0.20 II-A-3. One-sided copy 11" x 17" \$0.25 II-A-4. Two-sided copy 11" x 17" \$0.30 II-A-5. Certified copy of a public record \$1.00 II-A-6. Copies on electronic media Actual Cost of Duplication II-A-7. Portions of \$7.00 per page <p>NOTE: The first \$5.00 of applicable charges shall be waived based on the cost of processing payments. When the nature or volume of a public records request requires extensive use of information technology resources or extensive clerical or supervisory assistance, a special service charge shall be assessed as provided in section 119.07, F.S.</p>	
<p>III. Credit Card Convenience Charge</p>	<p>Actual Cost per Vendor Agreement</p>