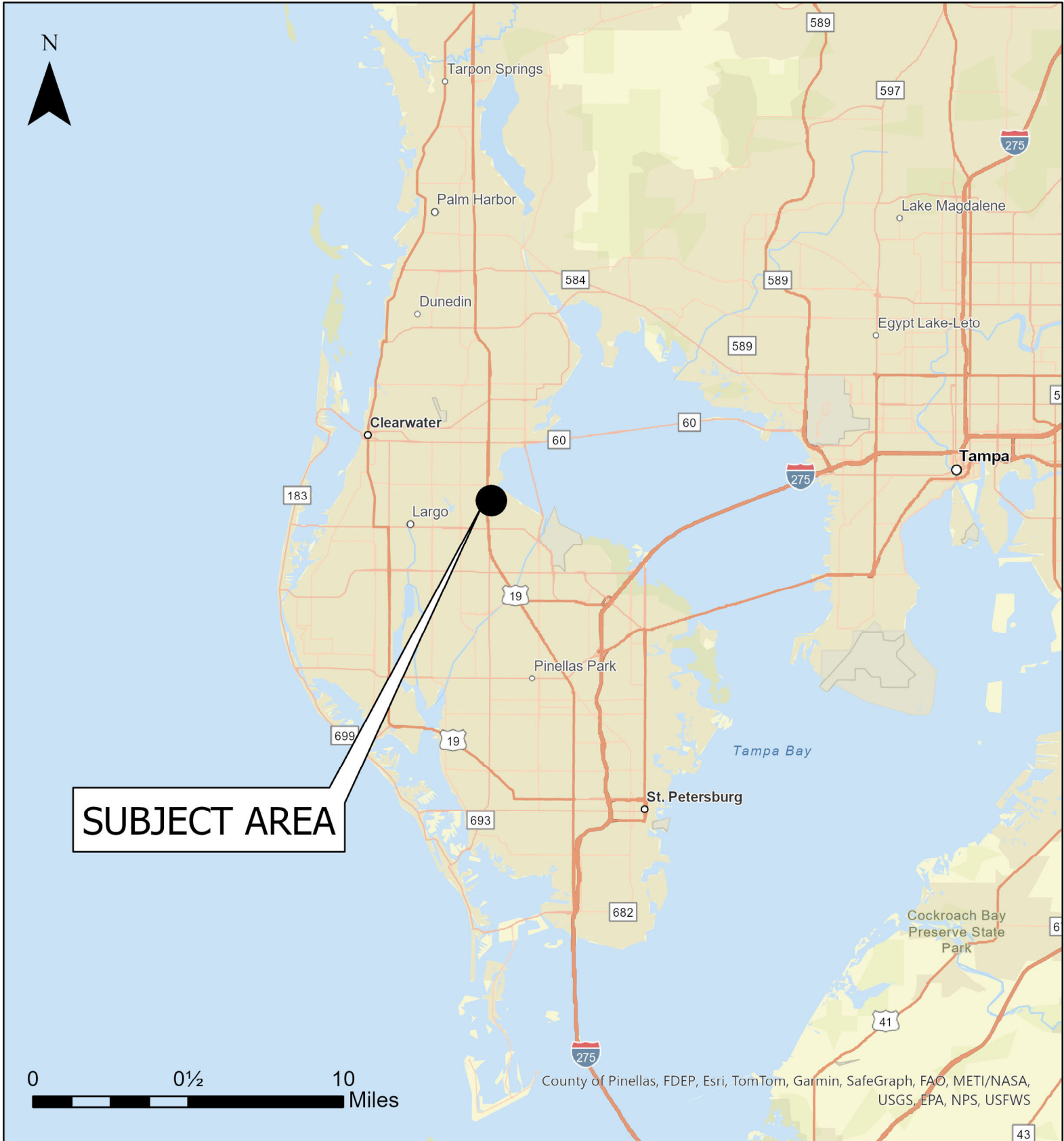


# Case CW24-15

## Map 1: Location Map

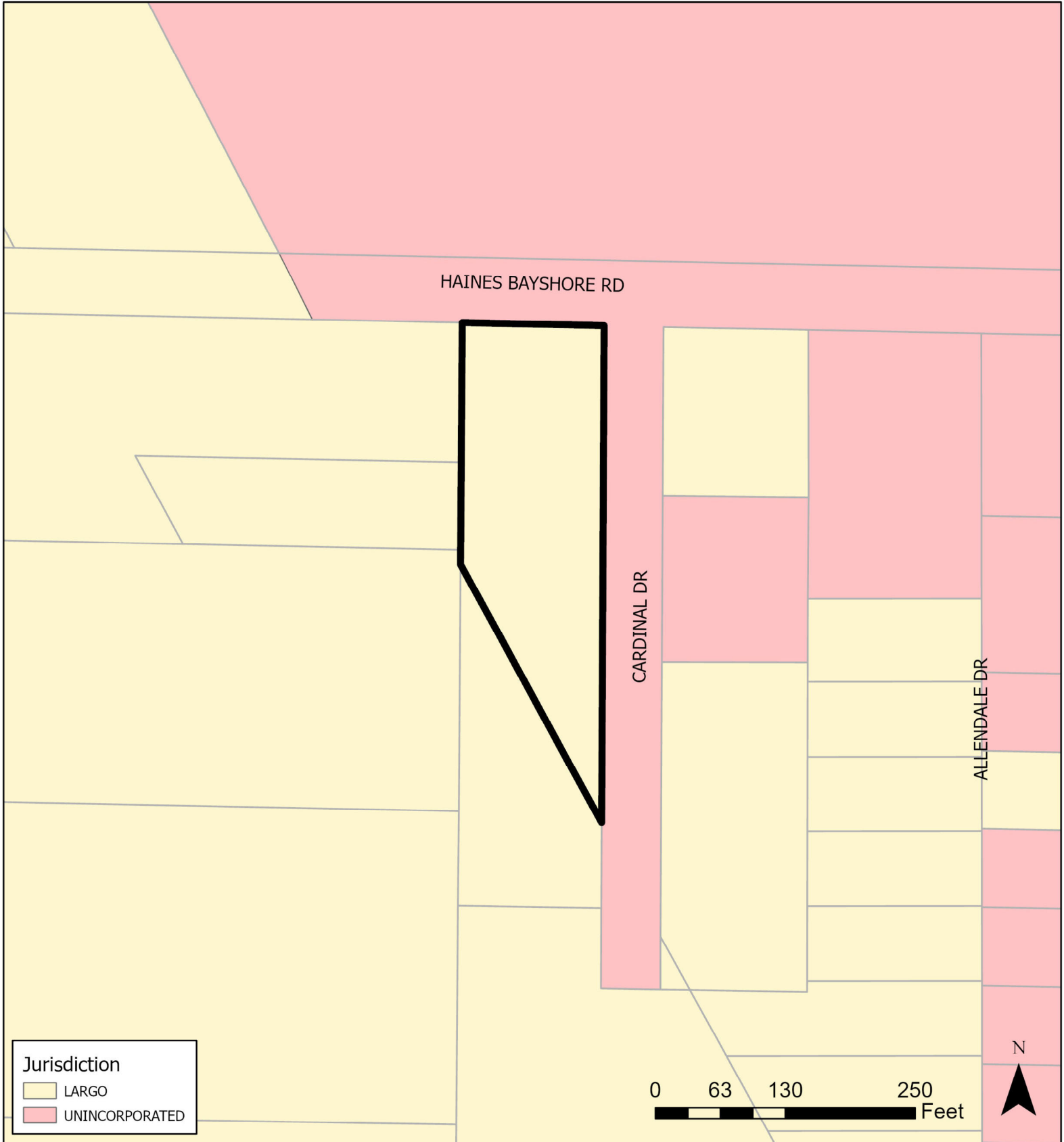


**JURISDICTION: Largo FROM: Residential Low Medium**

**AREA: 1.12 acres m.o.l. TO: Retail & Services**

# Case CW24-15

## Map 2: Jurisdictional Map



**JURISDICTION: Largo**

**FROM: Residential Low Medium**

**AREA: 1.12 acres m.o.l.**

**TO: Retail & Services**

# Case CW24-15

## Map 3: Aerial Map



**JURISDICTION:** Largo

**FROM:** Residential Low Medium

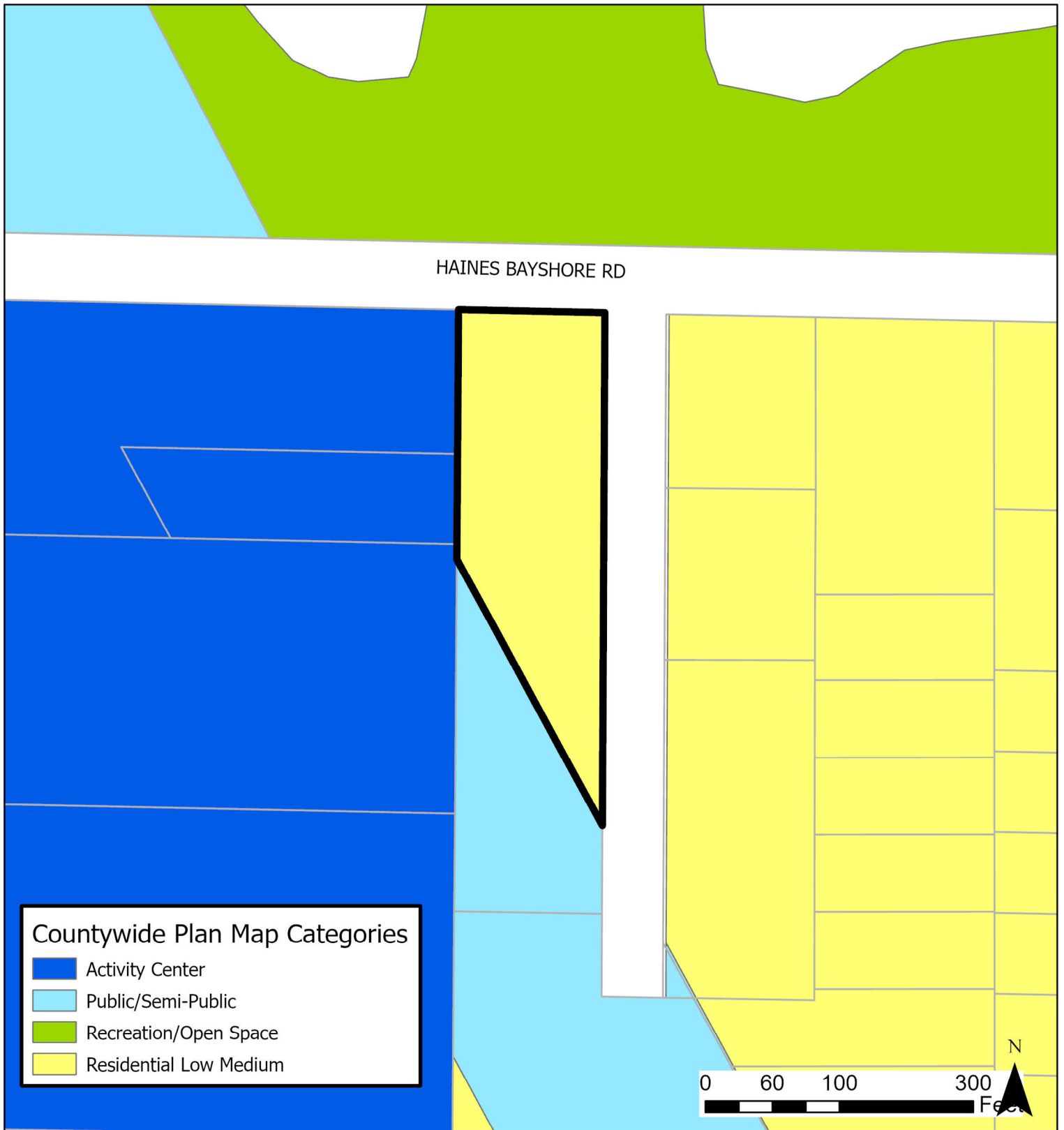
**AREA:** 1.12 acres m.o.l.

**TO:** Retail & Services



# Case CW24-15

## Map 4: Current Countywide Plan Map

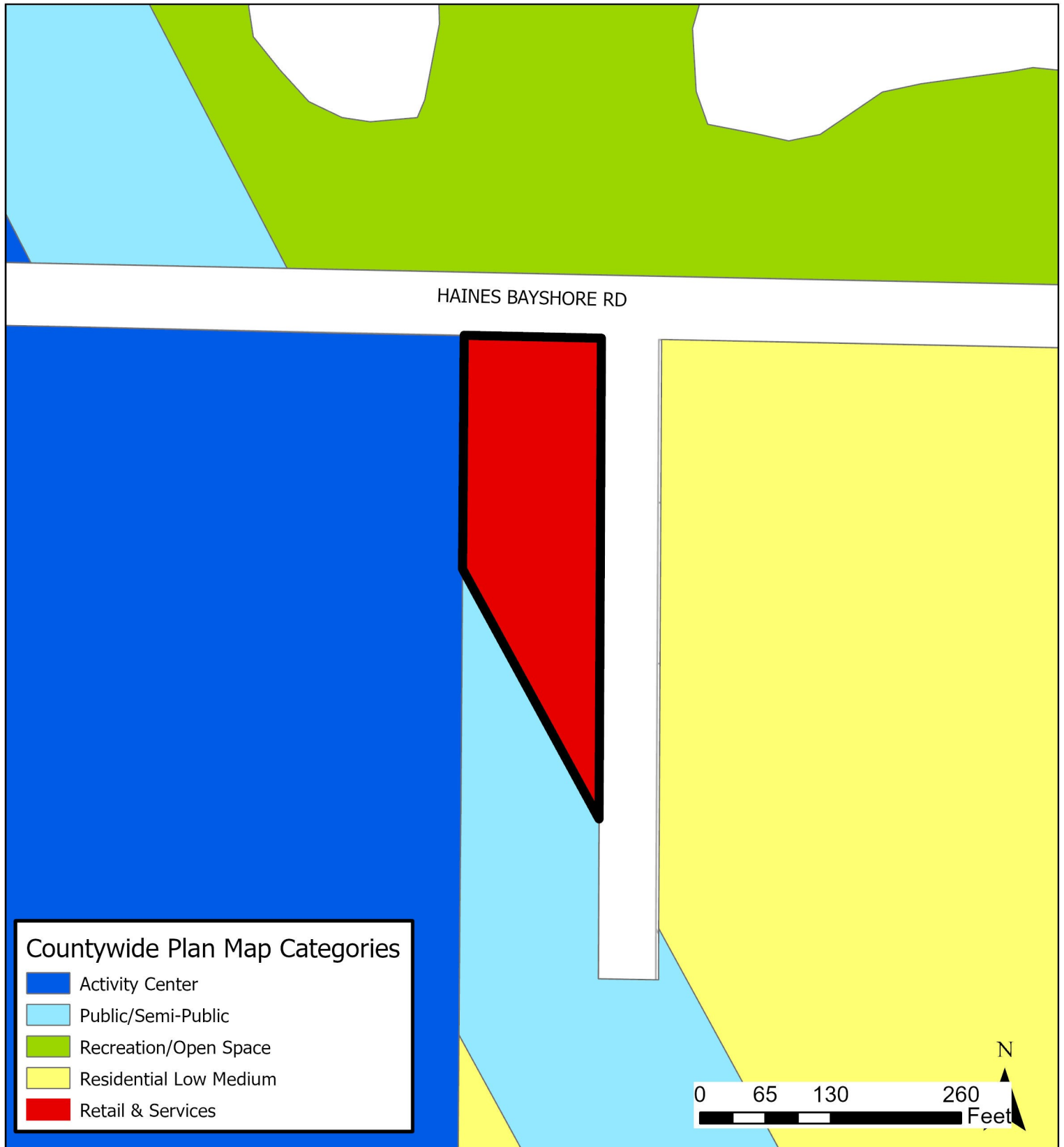


**JURISDICTION:** Largo

**FROM:** Residential Low Medium

**AREA:** 1.12 acres m.o.l

**TO:** Retail & Services



**JURISDICTION:** Largo  
**AREA:** 1.12 acres m.o.l

**FROM:** Residential Low Medium  
**TO:** Retail & Services