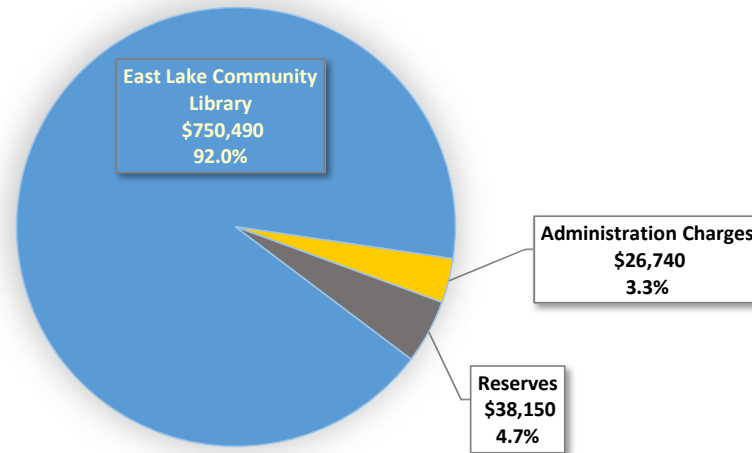
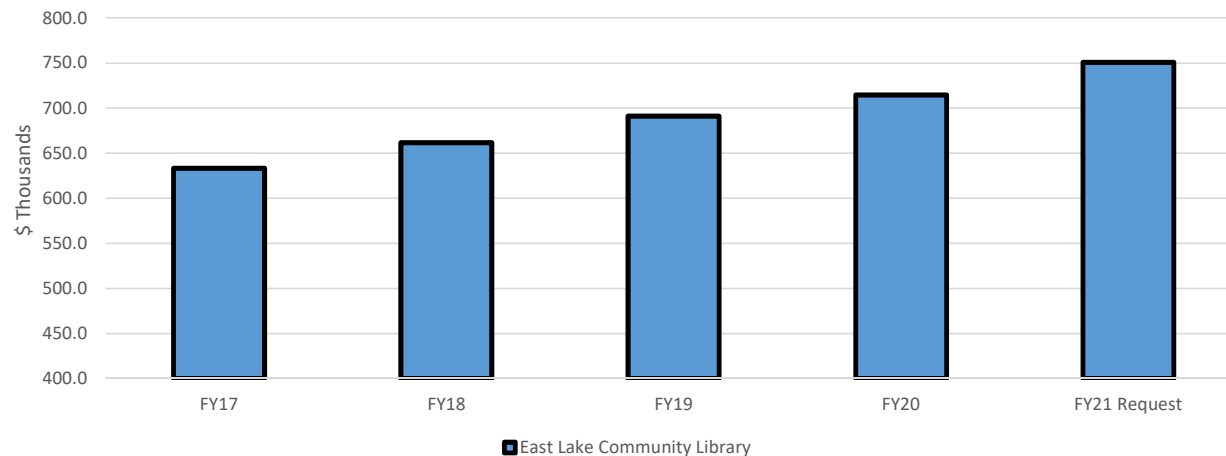


EAST LAKE LIBRARY SERVICES DISTRICT

FY21 Budget Request



East Lake Library Services District Budget History



The East Lake Library Services District is a municipal services taxing district within unincorporated Pinellas County. This special taxing district was established in 2013 by the Board of County Commissioners for the purpose of providing library facilities, services and programs to the residents within the East Lake Fire District boundaries. These facilities and services are funded by ad valorem taxes. Property owners within this district are levied a separate millage of 0.25 mills for this purpose, generating \$750,490 in estimated tax revenue for FY21. The maximum millage rate that can be levied is 0.25 mills.

Note: Administrative Charges include Commissions, Fees, Cost Allocation, and Other Charges

Department: East Lake Library Services District

FOSTER CONTINUAL GROWTH & VITALITY:

Support a vibrant community with recreation, arts and culture to attract residents and visitors.

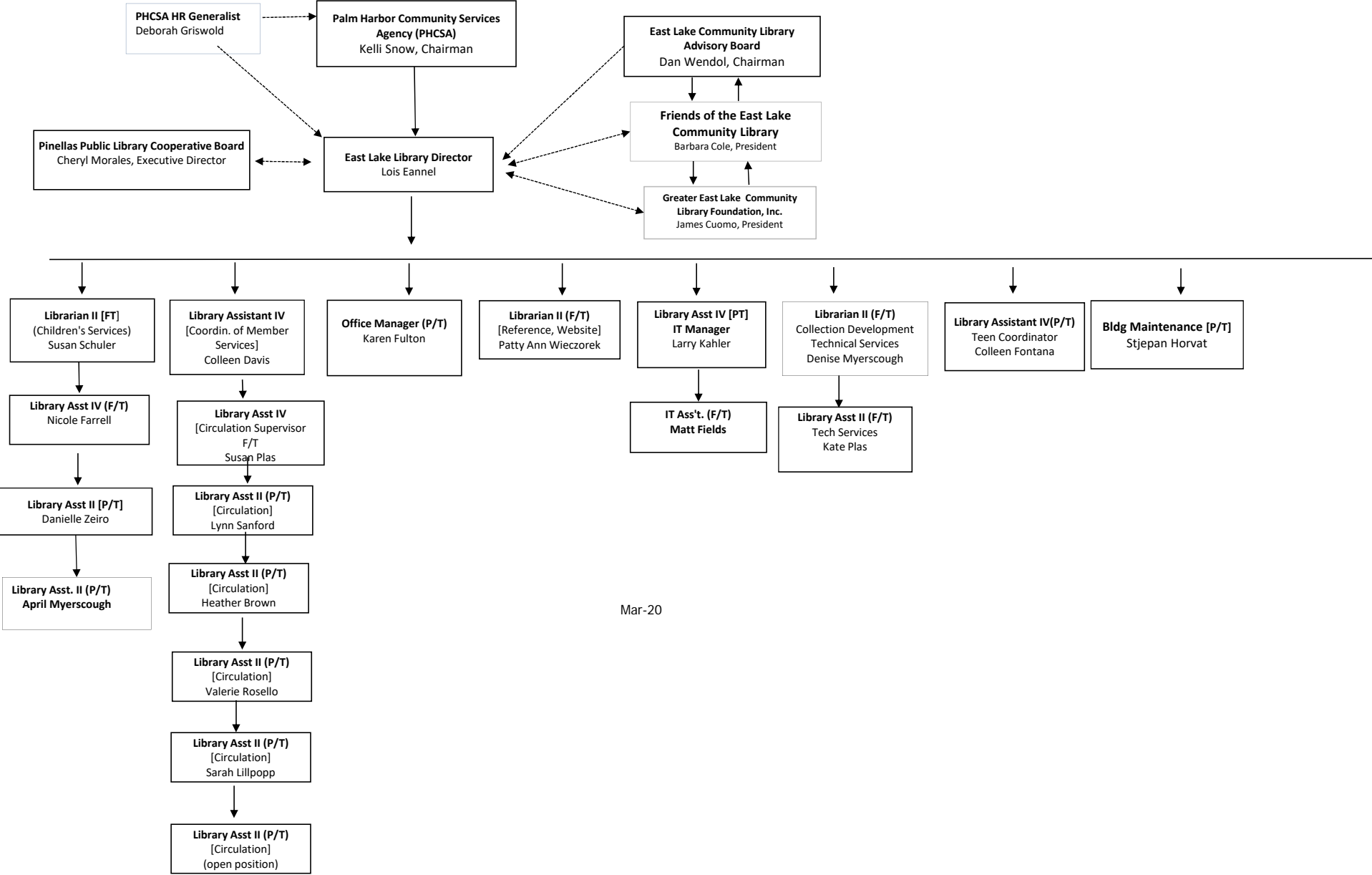
Program	Description	FY21 Total Program Allocation (\$)	FTE's *	FY20 Total Program Revenue (\$)
Library Operating	Library Services to residents of the East Lake unincorporated community. Amount not to exceed ad valorem revenues collected.	\$750,490	13.5	See below
SUBTOTAL - PROGRAMS:		\$750,490	13.5	
Administrative charges	Tax Collector and Property Appraiser Commissions, Full Cost Allocation, and Debt Service	\$26,740		
SUBTOTAL - EXPENDITURES:		\$777,230		
Reserves - Library	Reserves	\$38,150		
GRAND TOTALS:		\$815,380	13.5	

NOTE: This budget is supported by a separate property tax levy for the East Lake Library Services District.

Other Revenues		
Public Library Cooperative		\$203,000
East Lake Friends of the Library		\$20,000
Overdue Fines		\$12,000
Facility Rental		\$2,000
Miscellaneous		\$8,000
OTHER FUNDS TOTAL:		\$245,000
TOTAL All Revenues:		\$995,490 .

* FTE's are not County employees
7 full-time & 13 p/t proposed for FY'21

East Lake Community Library Organization and Staffing Chart - 2020



Mar-20