

Map 1 - Location

CASE #: CW 91-13 (SAP Change No. 5-2017)

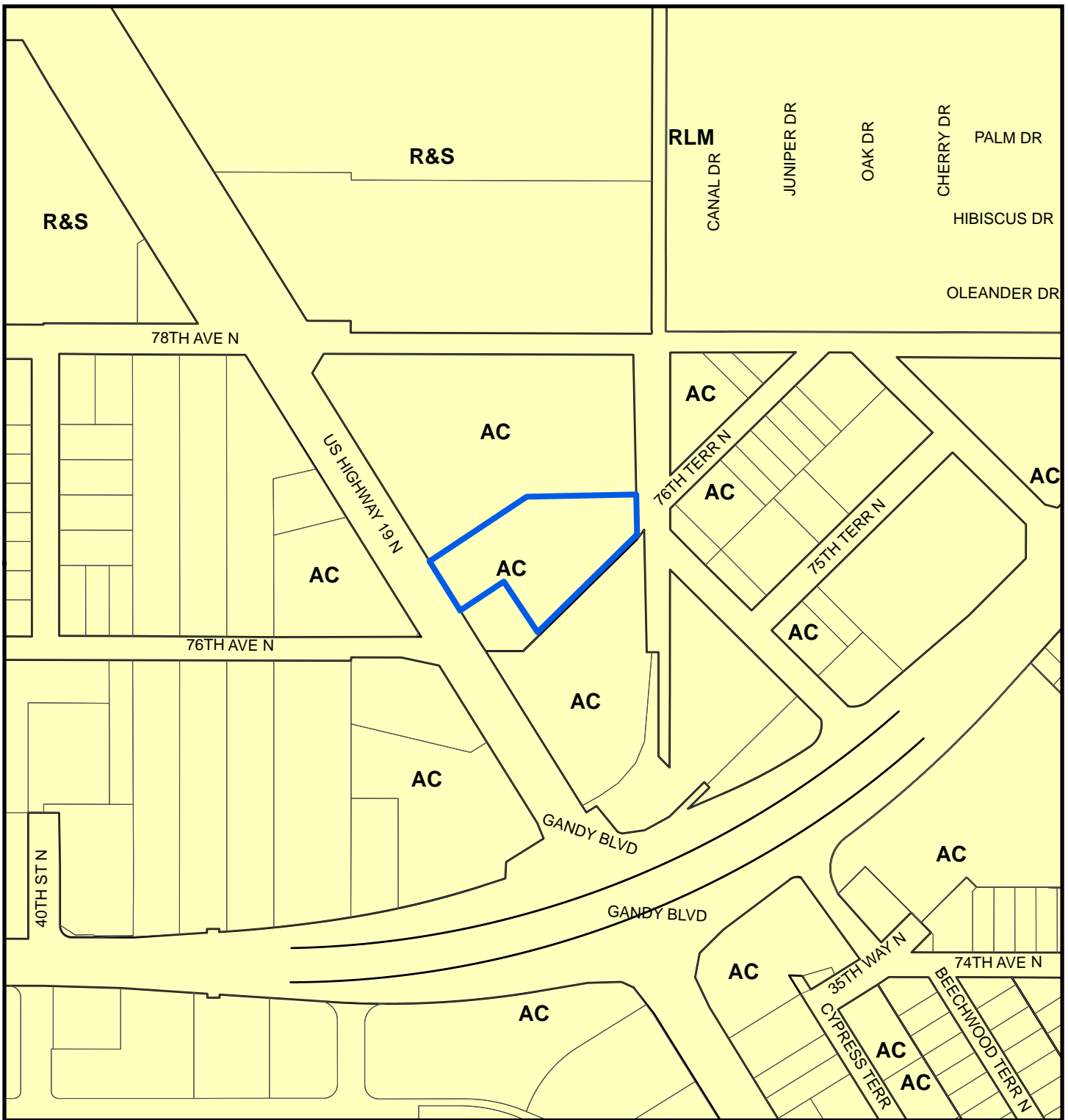
FROM: Activity Center

AREA: 1.7 Acres

JURISDICTION: Pinellas Park

TO: Activity Center





Map 2 - Current Countywide Plan Map & Jurisdictional Map

CASE #: CW 91-13 (SAP Change No. 5-2017)

FROM: Activity Center

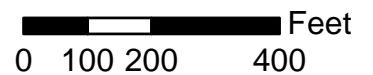
AREA: 1.7 Acres

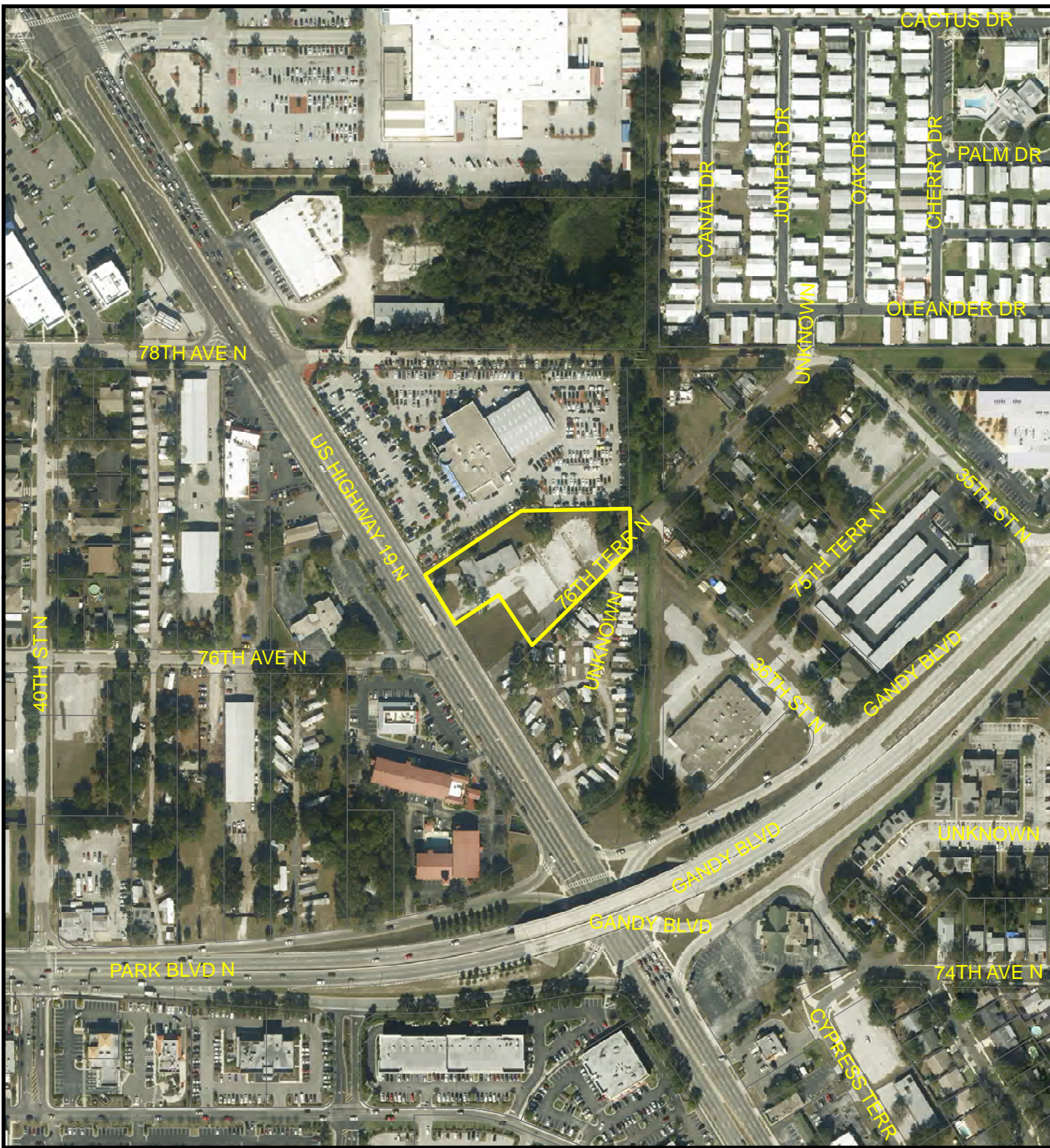
JURISDICTION: Pinellas Park

TO: Activity Center

LEGEND:

 Pinellas Park

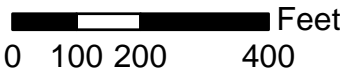


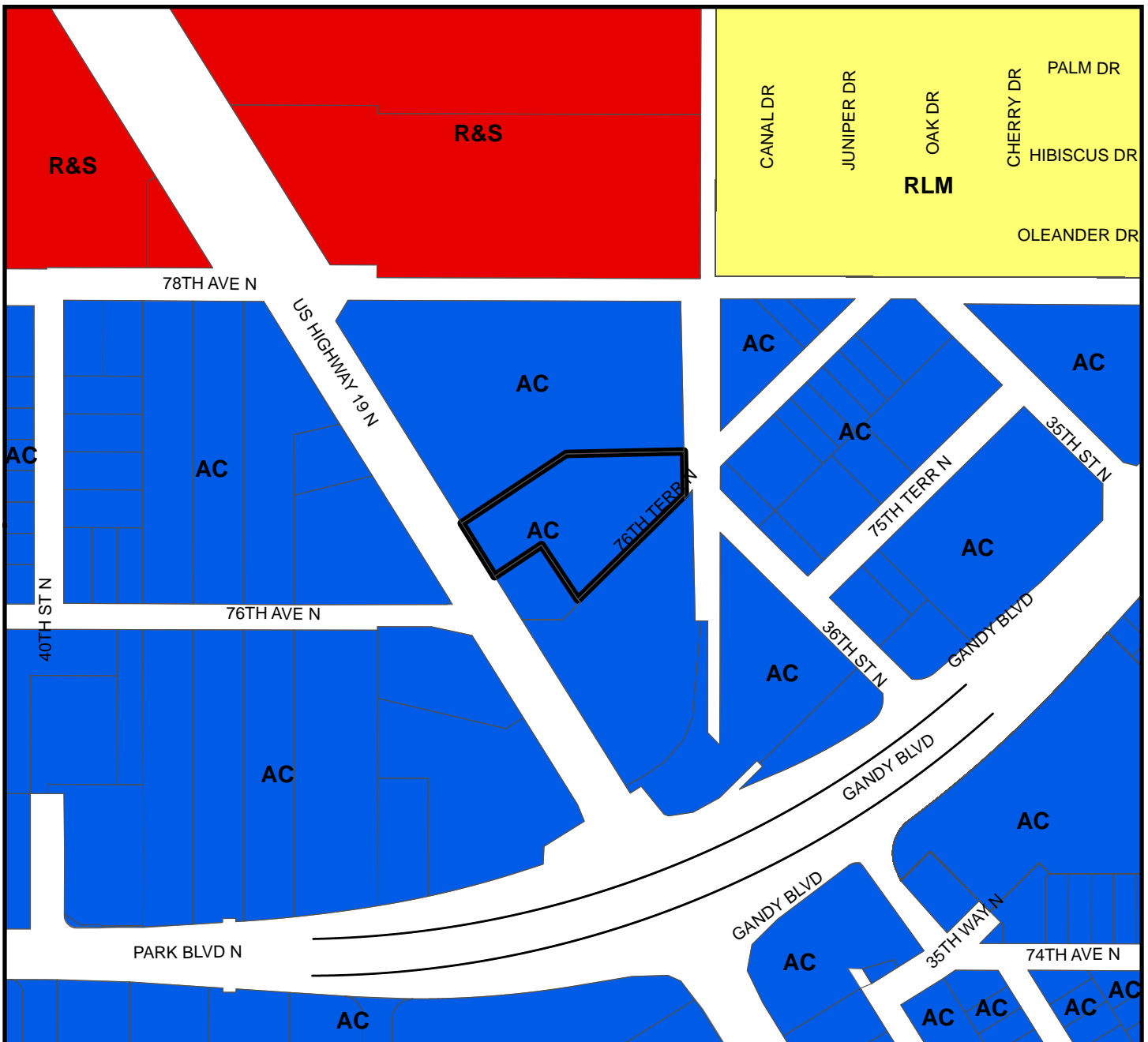


Map 3 - Aerial

CASE #: CW 91-13 (SAP Change No. 5-2017) **FROM:** Activity Center **AREA:** 1.7 Acres

JURISDICTION: Pinellas Park **TO:** Activity Center





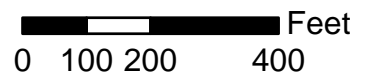
Countywide Plan Map Categories

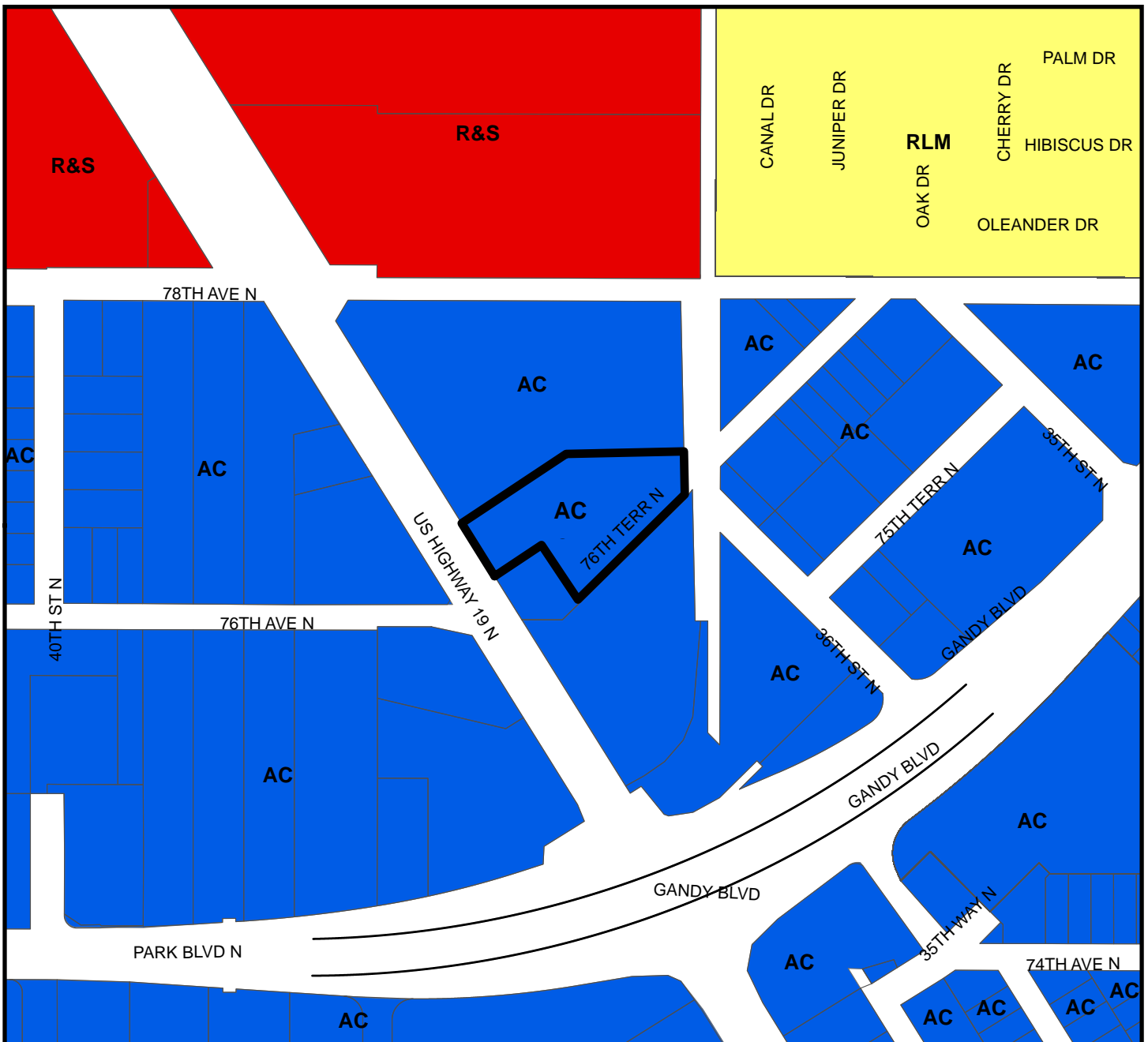
- Residential Low Medium
- Activity Center
- Retail & Services

Map 4 - Current Countywide Plan Map

CASE #: CW 91-13 (SAP Change No. 5-2017) **FROM:** Activity Center **AREA:** 1.7 Acres

JURISDICTION: Pinellas Park **TO:** Activity Center





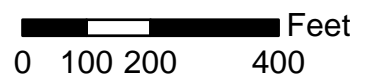
Countywide Plan Map Categories

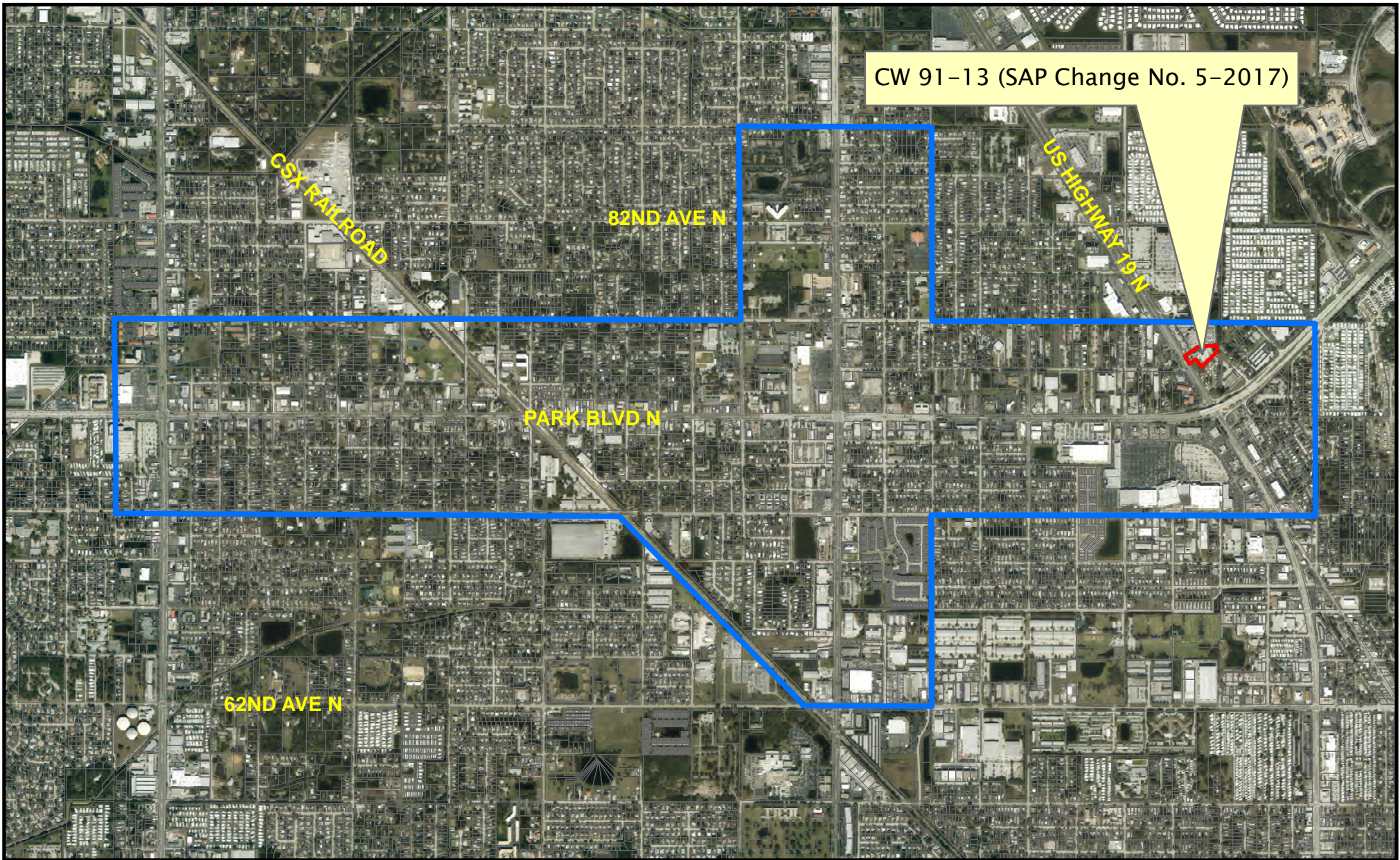
- Residential Low Medium
- Activity Center
- Retail & Services

Map 5 - Proposed Countywide Plan Map

CASE #: CW 91-13 (SAP Change No. 5-2017) **FROM:** Activity Center **AREA:** 1.7 Acres

JURISDICTION: Pinellas Park **TO:** Activity Center





Map 6 - Large Aerial

CASE #: CW 91-13 (SAP Change No. 5-2017)

FROM: Activity Center

AREA: 1.7 Acres

JURISDICTION: Pinellas Park

TO: Activity Center

Legend

- CW 91-13 (SAP Change No. 5-2017)
- Pinellas Park Special Area Plan Boundary

