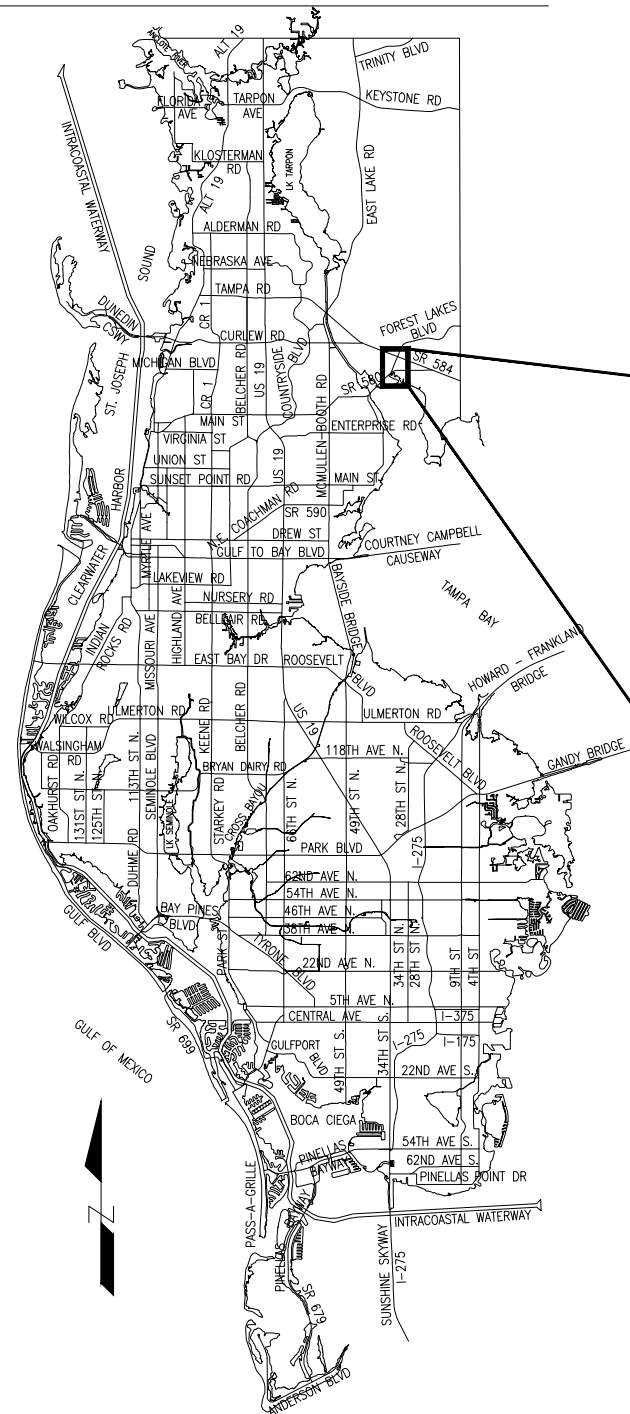


FOREST LAKES BLVD - PH III (SR-580 TO TAMPA RD)

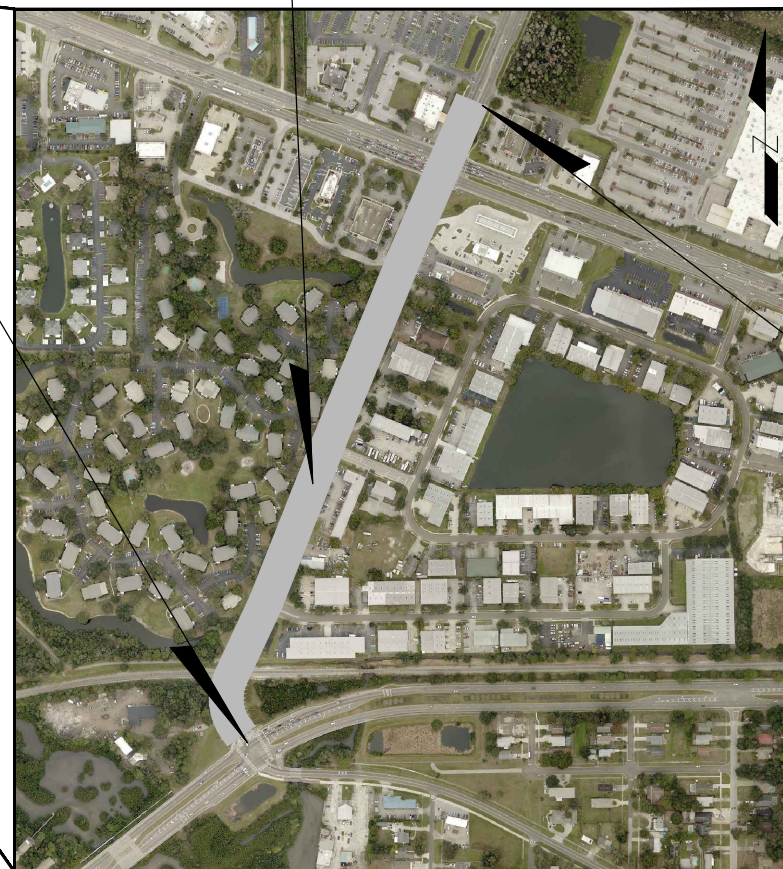
PINELLAS COUNTY
LOCATION MAP



PID FINANCIAL PID

PROJECT LOCATION

BEGIN PROJECT
STA. 13+15.00



SECTION 14, 22, & 23, TOWNSHIP 28 SOUTH, RANGE 16 EAST

KEY MAP
NOT TO SCALE

INDEX OF PLANS

SHEET NO.	SHEET TITLE
1	KEY SHEET
2 - 3	TYPICAL SECTIONS
4 - 8	PLAN

END PROJECT
STA. 36+80.00

PROJECT MANAGER:

PINELLAS COUNTY
14 SOUTH FORT HARRISON AVENUE
CLEARWATER, FLORIDA 33756
PHONE: (727)464-3588

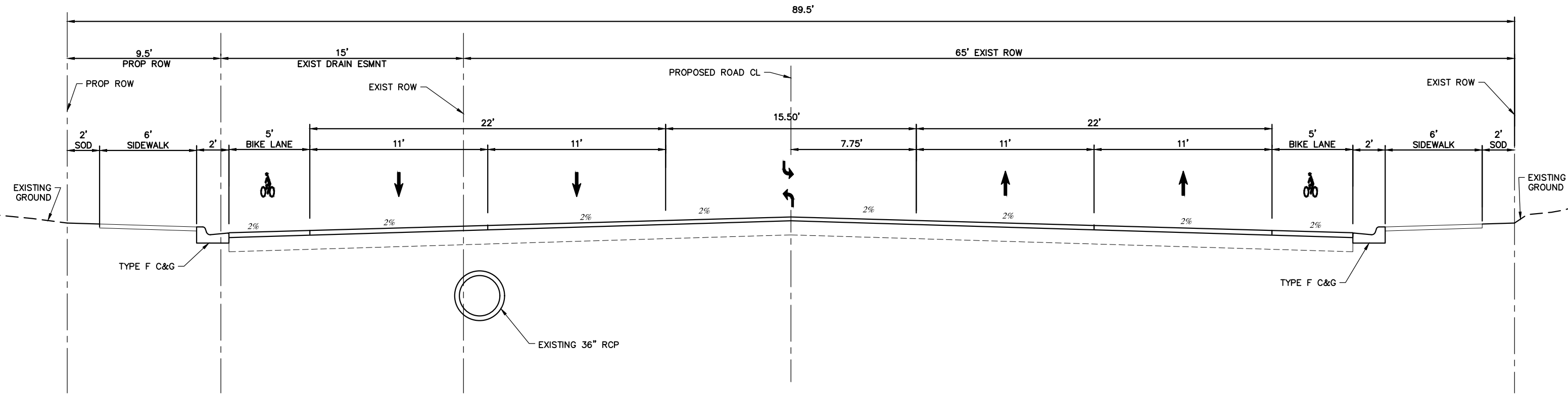
PREPARED BY:

PINELLAS COUNTY
PUBLIC WORKS DEPARTMENT

P.E. No.
ENGINEER OF RECORD

DATE

P:\Forst_Lks\Plans\Production\002110A-TYP.dwg, Jan 18, 2018 - 9:10am

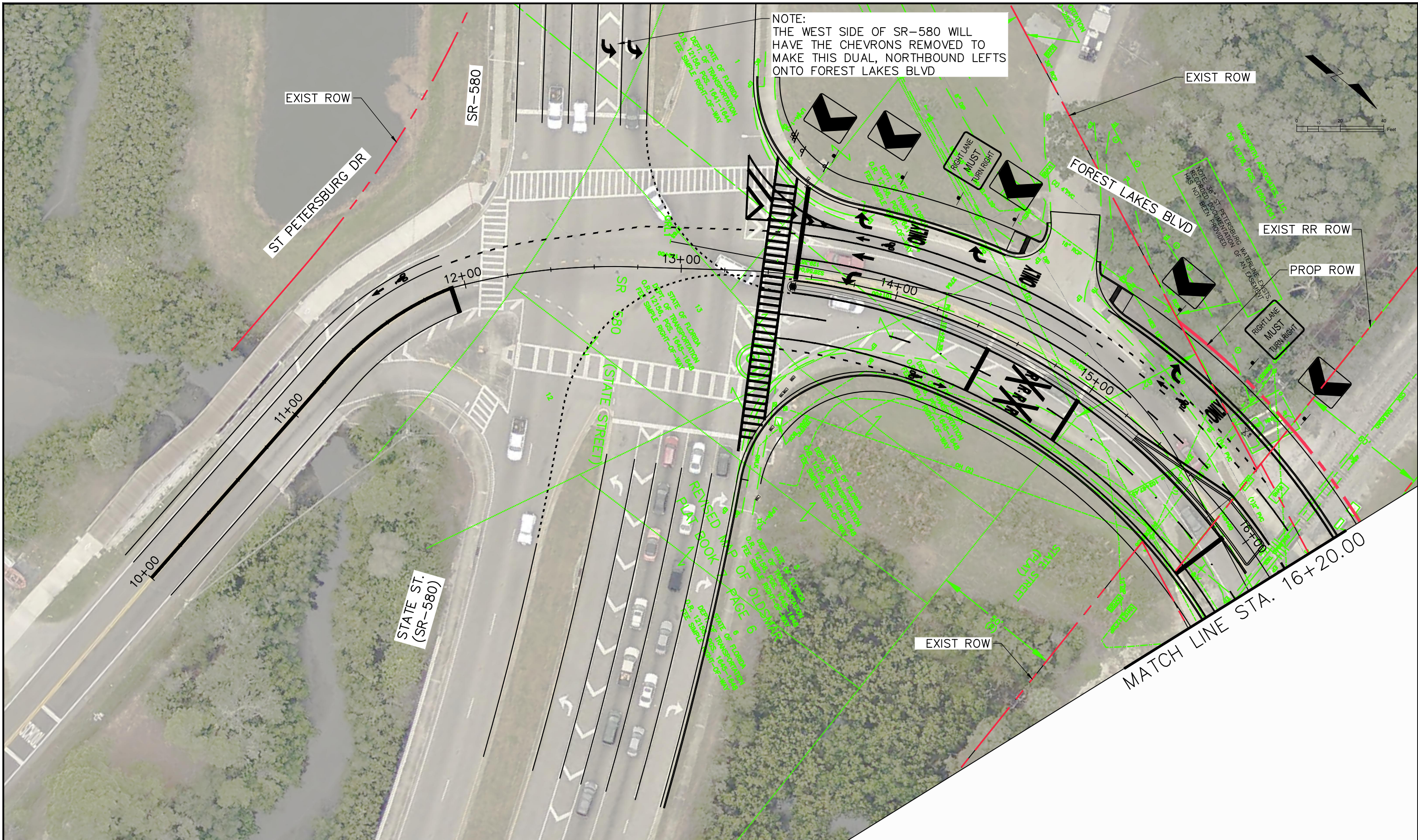


TYPICAL SECTION 1
FOREST LAKES BLVD
 (N.T.S.)

STA: 19+40.00 TO STA: 33+00.00

DESIGNED	EL		PROJECT:	FOREST LAKES BLVD - PH III (SR-580 TO TAMPA RD)	DESCRIPTION:	TYPICAL SECTION	PUBLIC WORKS 14 S. FT. HARRISON AVE., CLEARWATER, FL 33756	APPROVED BY:	DATE:
DRAWN	KF								
CHECKED	PB								
REV. NO.	DATE	DESCRIPTION	REV. BY				P.E. FLA. LIC. NO	DATE	SHEET:

P:\Forst_Lks\Plans\Production\002110A-PLAN.dwg, Jan 18, 2018 - 9:11am



NOTE:
THE WEST SIDE OF SR-580 WILL
HAVE THE CHEVRONS REMOVED TO
MAKE THIS DUAL, NORTHBOUND LEFTS
ONTO FOREST LAKES BLVD

EXIST ROW

EXIST ROW

EXIST RR ROW

PROP ROW

EXIST ROW

MATCH LINE STA. 16+20.00

STATE ST.
(SR-580)

SR 580
(STATE STREET)

FOREST LAKES BLVD

ST PETERSBURG DR

REVISED MAP OF
PLAT BOOK PAGE 6
STATE OF FLORIDA
DEPT. OF TRANSPORTATION
O.R. 12188, P.S. 1645-1648
FEE SIMPLE RIGHT-OF-WAY

NOTE: ST. PETERSBURG WATERLINE EXISTS
REGISTERED DOCUMENTATION OF AN EASEMENT
ON 10/27/08, P.S. 1646-1648

DESIGNED	EL	
DRAWN	KF	
CHECKED	PB	
REV. NO.	DATE	DESCRIPTION

DESIGNED	EL
DRAWN	KF
CHECKED	PB
REV. BY	



PROJECT:
FOREST LAKES BLVD - PH III
(SR-580 TO TAMPA RD)

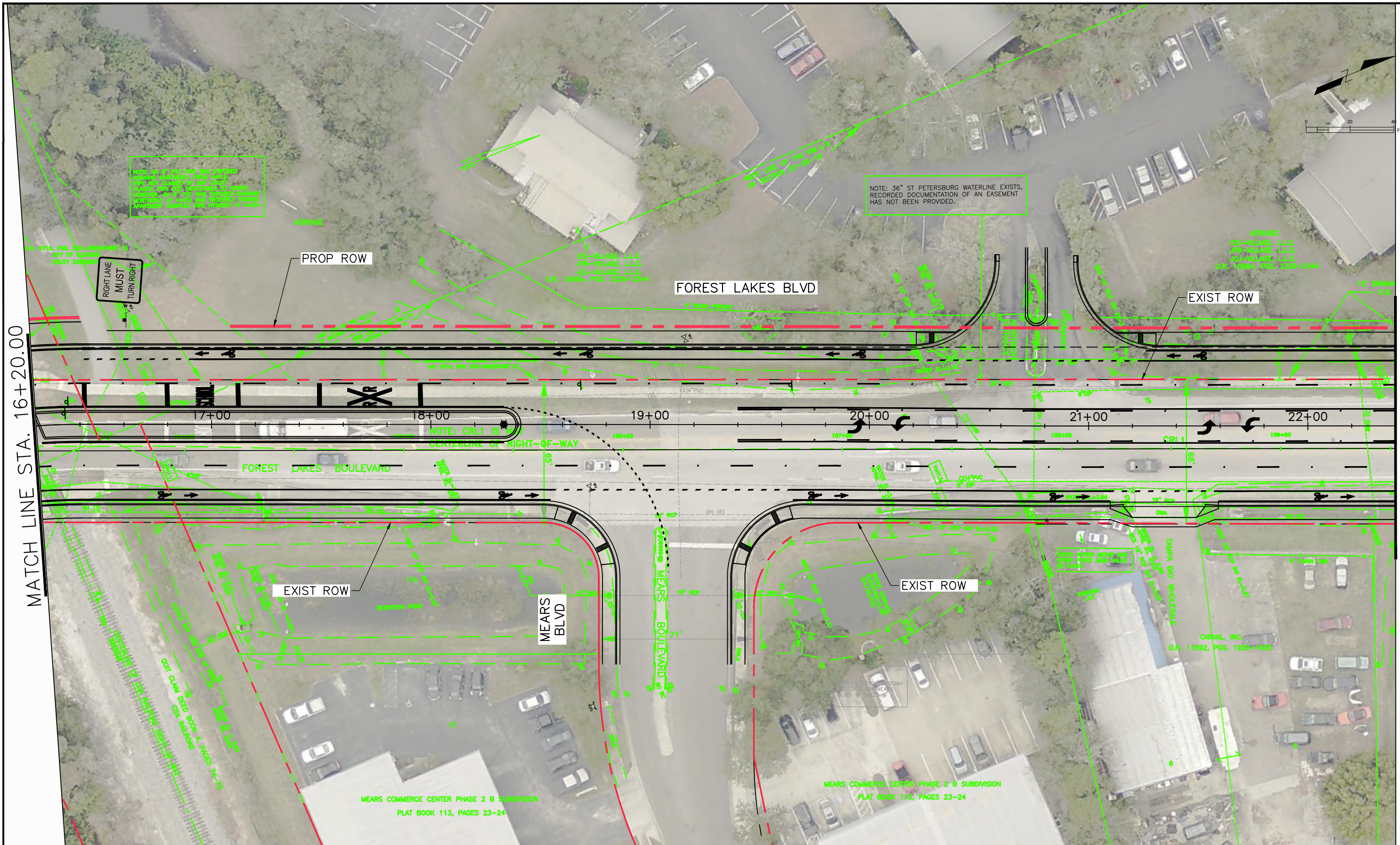
DESCRIPTION:
PLAN
STA. (10+00 - 16+20)

PUBLIC WORKS
14 S. FT. HARRISON AVE.,
CLEARWATER, FL 33756

APPROVED BY:
P.E.
FLA. LIC. NO. _____ DATE _____

DATE: **JAN/2018**
PROJECT NO. _____
SHEET: **4 OF 8**

P:\Forst_Lks\Plans\Production\002110A-PLAN.dwg, Jan 18, 2018 - 9:11am



MATCH LINE STA. 16+20.00

MATCH LINE STA. 22+40.00

REV. NO.	DATE	DESCRIPTION	REV. BY

DESIGNED	EL
DRAWN	KF
CHECKED	PB



PROJECT:
FOREST LAKES BLVD - PH III
 (SR-580 TO TAMPA RD)

DESCRIPTION:
PLAN
 STA. (16+20 - 22+40)

PUBLIC WORKS
 14 S. FT. HARRISON AVE.,
 CLEARWATER, FL 33756

APPROVED BY:

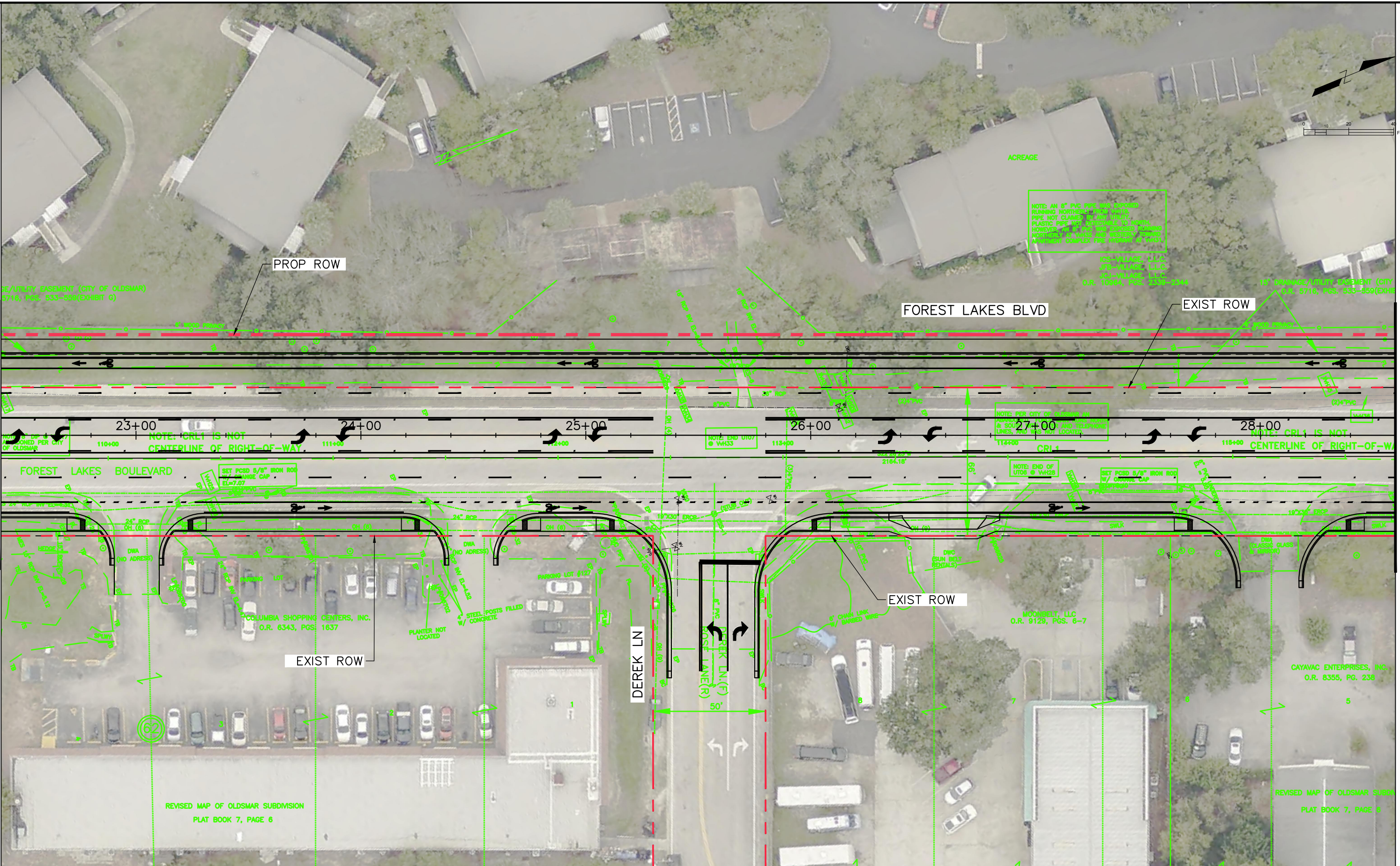
 P.E.
 FLA. LIC. NO _____ DATE _____

DATE: JAN/2018
 PROJECT NO. _____
 SHEET: 5 OF 8

P:\Forst_Lks\Plans\Production\002110A--PLAN.dwg, Jan 18, 2018 - 9:11am

MATCH LINE STA. 22+40.00

MATCH LINE STA. 28+60.00



REV. NO.	DATE	DESCRIPTION	REV. BY

DESIGNED	EL
DRAWN	KF
CHECKED	PB



PROJECT:
FOREST LAKES BLVD - PH III
 (SR-580 TO TAMPA RD)

DESCRIPTION:
 PLAN
 STA. (22+40 - 28+60)

PUBLIC WORKS
 14 S. FT. HARRISON AVE.,
 CLEARWATER, FL 33756

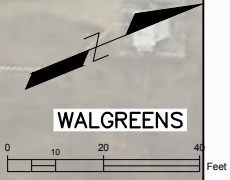
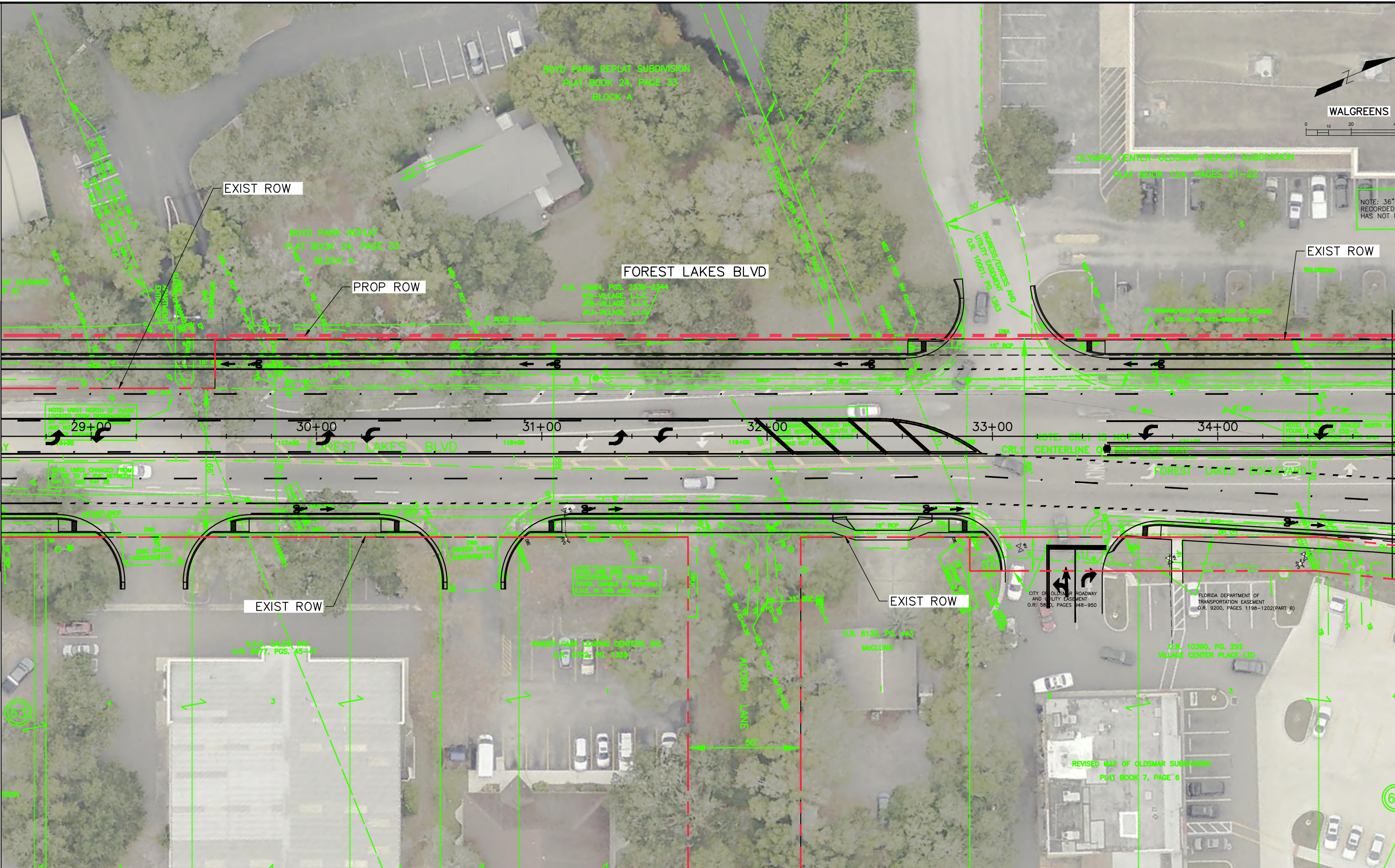
APPROVED BY: _____
 P.E. _____
 FLA. LIC. NO. _____ DATE _____

DATE: JAN/2018
 PROJECT NO. _____
 SHEET: 6 OF 8

P:\Forst_Lks\Plans\Production\002110A--PLAN.dwg, Jan 18, 2018 - 9:11am

MATCH LINE STA. 28+60.00

MATCH LINE STA. 34+80.00



REV. NO.	DATE	DESCRIPTION	REV. BY

DESIGNED	EL
DRAWN	KF
CHECKED	PB



PROJECT:
FOREST LAKES BLVD - PH III
 (SR-580 TO TAMPA RD)

DESCRIPTION:
PLAN
 STA. (28+60 - 34+80)

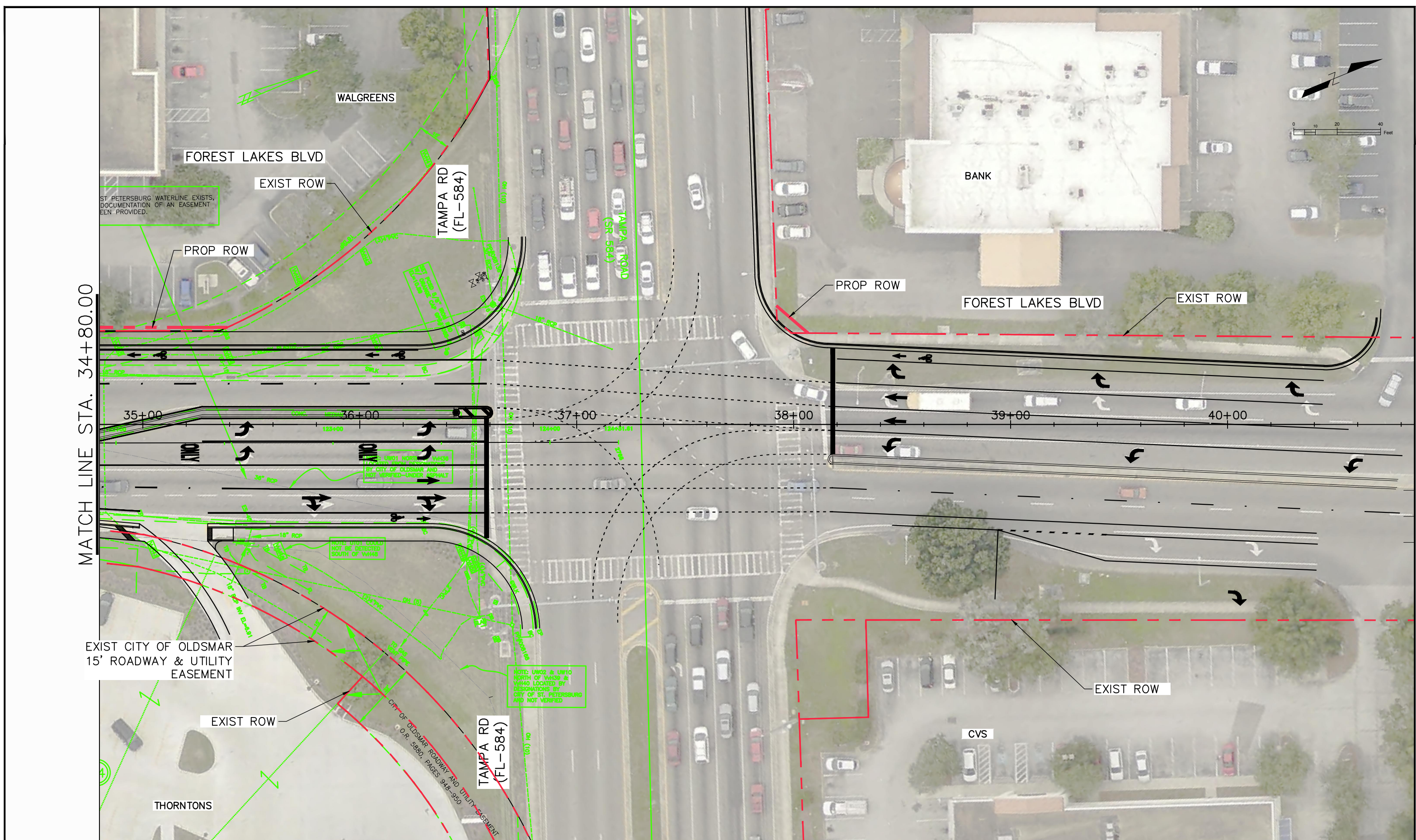
PUBLIC WORKS
 14 S. FT. HARRISON AVE.,
 CLEARWATER, FL 33756

APPROVED BY:

 P.E.
 FLA. LIC. NO _____ DATE _____

DATE: JAN/2018
 PROJECT NO. _____
 SHEET: 7 OF 8

P:\Forst_Lks\Plans\Production\002110A--PLAN.dwg, Jan 18, 2018 - 9:11am



MATCH LINE STA. 34+80.00

REV. NO.	DATE	DESCRIPTION	REV. BY

DESIGNED	EL
DRAWN	KF
CHECKED	PB



PROJECT:
FOREST LAKES BLVD - PH III
 (SR-580 TO TAMPA RD)

DESCRIPTION:
 PLAN
 STA. (34+80 - 40+42)

PUBLIC WORKS
 14 S. FT. HARRISON AVE.,
 CLEARWATER, FL 33756

APPROVED BY: _____
 P.E. _____
 FLA. LIC. NO. _____ DATE _____

DATE: JAN/2018
 PROJECT NO. _____
 SHEET: 8 OF 8