

PINELLAS TRAIL NORTH GAP:

Countryside Alignment



**Board of County Commissioners
Work Session February 4, 2021**



Our Vision: To Be the Standard for Public Service in America.



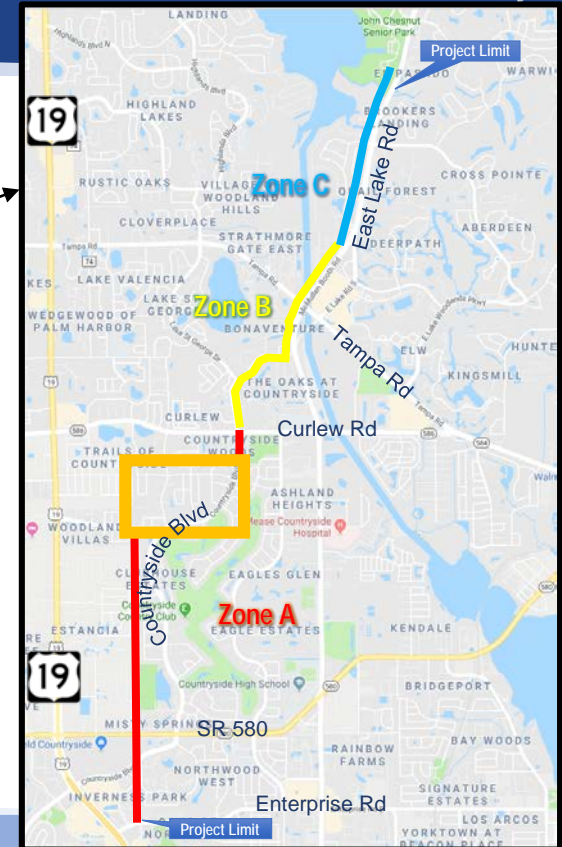
Countryside Trail Alignment

North Loop Trail Project Location

- Enterprise Rd. to John Chesnut Park
- 6.8 miles
- Trail project is under construction
 - Excludes section between the Duke Energy property at Northside Dr. and Countryside Blvd. at Meadow Wood Dr.



Pinellas Trail Loop

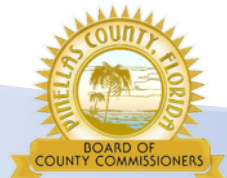
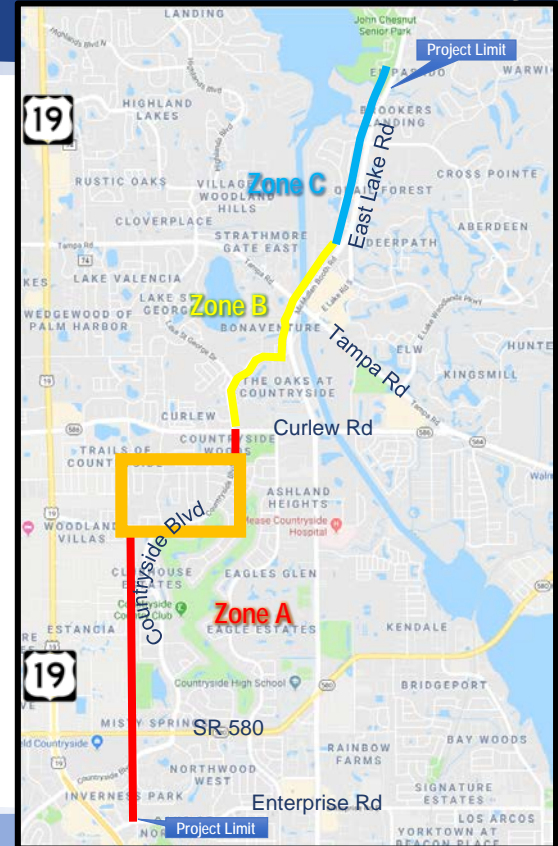


Countryside Trail Alignment



North Loop Trail Past Meetings

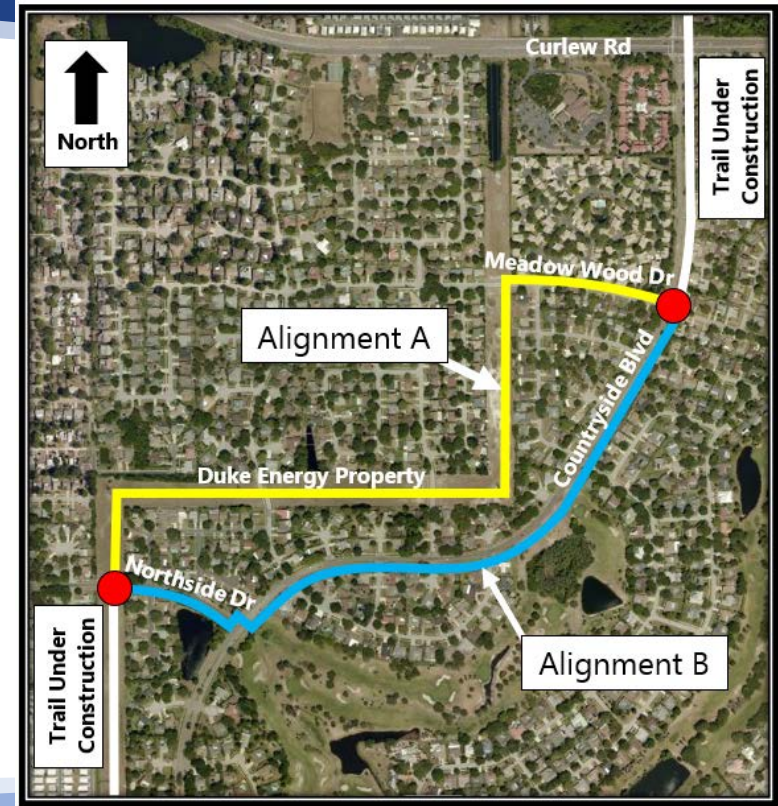
- Nov 2018 – First public meeting
- Apr 2019 – BCC meeting
- Jun 2019 – BCC workshop
- Oct 2019 – Northside Dr. – Countryside Blvd. alignment public meeting
- Dec 2020 – Public meeting to present alignment alternatives



Countryside Trail Alignment

Countryside Alignments

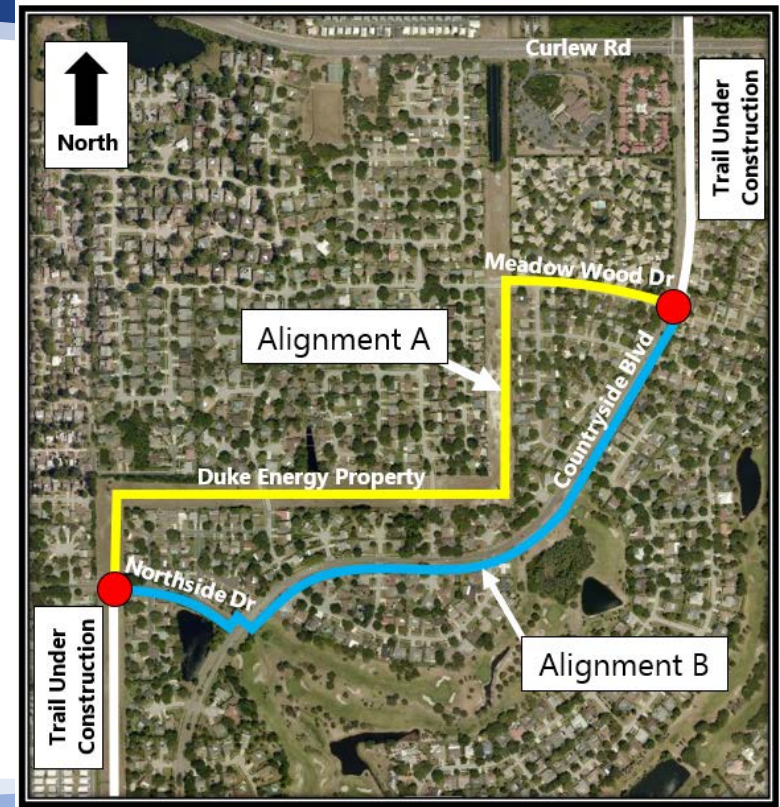
- Alignment A
Along the Duke Energy property and the north side of Meadow Wood Dr.
- Alignment B
Along the south side of Northside Dr. and along the east side of Countryside Blvd.



Countryside Trail Alignment

Alignment Comparison

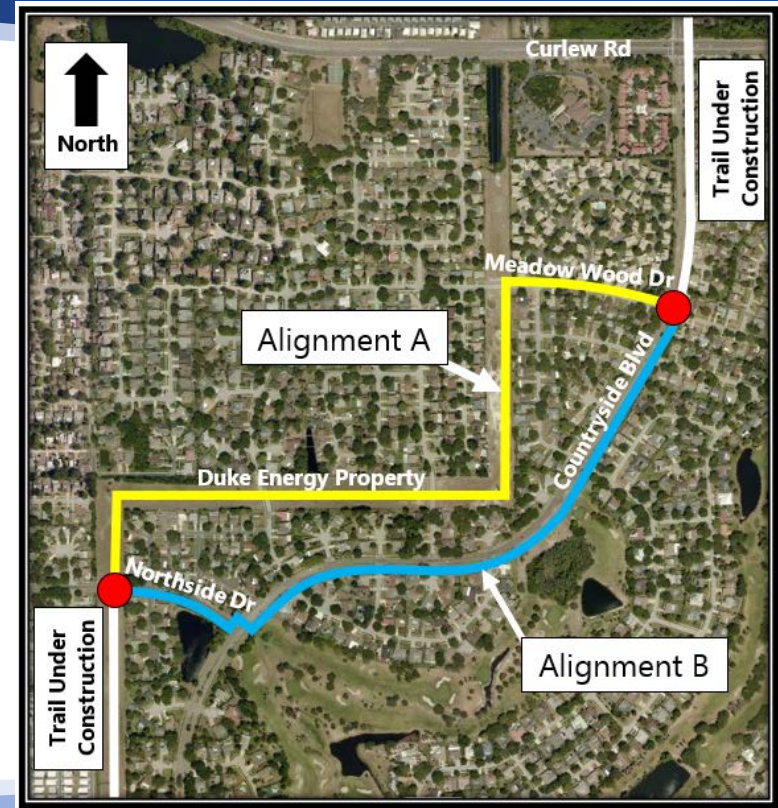
	Alignment A Duke Energy / Meadow Wood Dr.	Alignment B Northside Dr. / Countryside Blvd
Side street speed limit	25	35
Side street traffic volumes	336	3,527
Alignment crashes (4 years)	5	15
Number of street crossings	6	9
Partially shaded	No	Yes
Scenic Views	Open Space	Golf Course
Side street visibility	300 feet	600 feet
Cost Comparison	\$700K	\$1M



Countryside Trail Alignment

Concerns Expressed

- Alignment A
 - Privacy loss and closeness to homes
 - Crime / vagrancy / trespassing
 - Reduced property value
- Alignment B
 - Vehicle speeds / traffic volumes / cut-through traffic from U.S. 19
 - Number of driveways and road crossings
 - Trees and pond
 - Reduced property values
 - Privacy loss and closeness to homes



Countryside Trail Alignment

Options to Mitigate Concerns

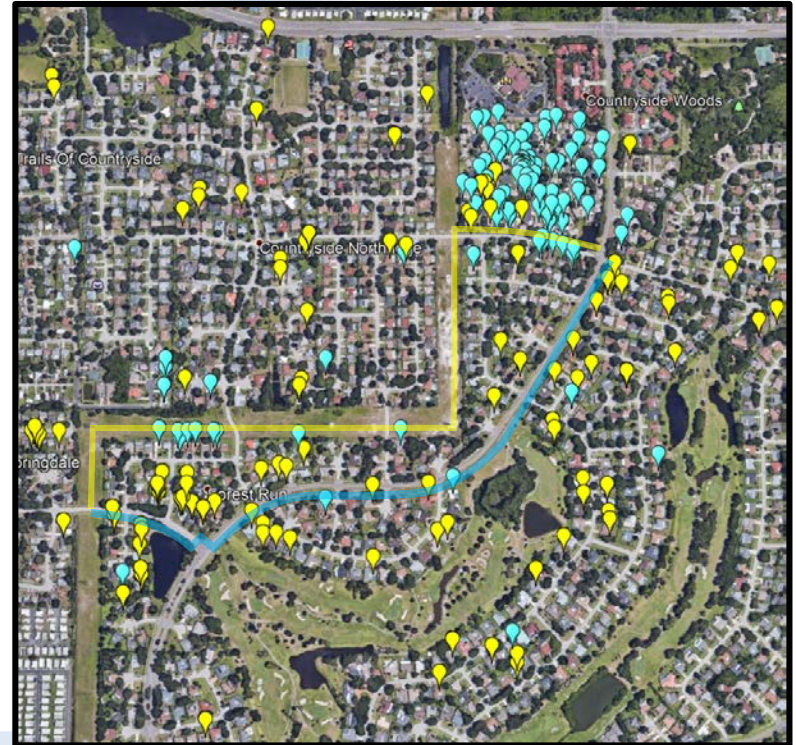
- Alignment A
 - Hedge
 - Fence
 - Share the road markings
- Alignment B
 - Intersection modification
 - Hedge
 - Fence
 - Cycle track (separated 2-way bicycle lanes)



Countryside Trail Alignment

Online Survey (314)

- Location
 - 80% Live near one of the proposed alignments
 - 5% Commuter in the area
 - 15% Trail user
- Alignment Preference
 - 55% Alignment A (Yellow pins)
 - 45% Alignment B (Blue pins)



Countryside Trail Alignment

Staff Recommendation

- Alignment A
- Options:
 - Hedge or fence along Meadow Wood Dr.
 - Share the road markings
 - Coordinate with City and property owners
 - Cost of options not included in estimates

