

**Z-13-07-18**  
**Location Map**

**Zoning**

**From:** C-1, Neighborhood Commercial  
**To:** C-2, General Retail Commercial & Limited Services



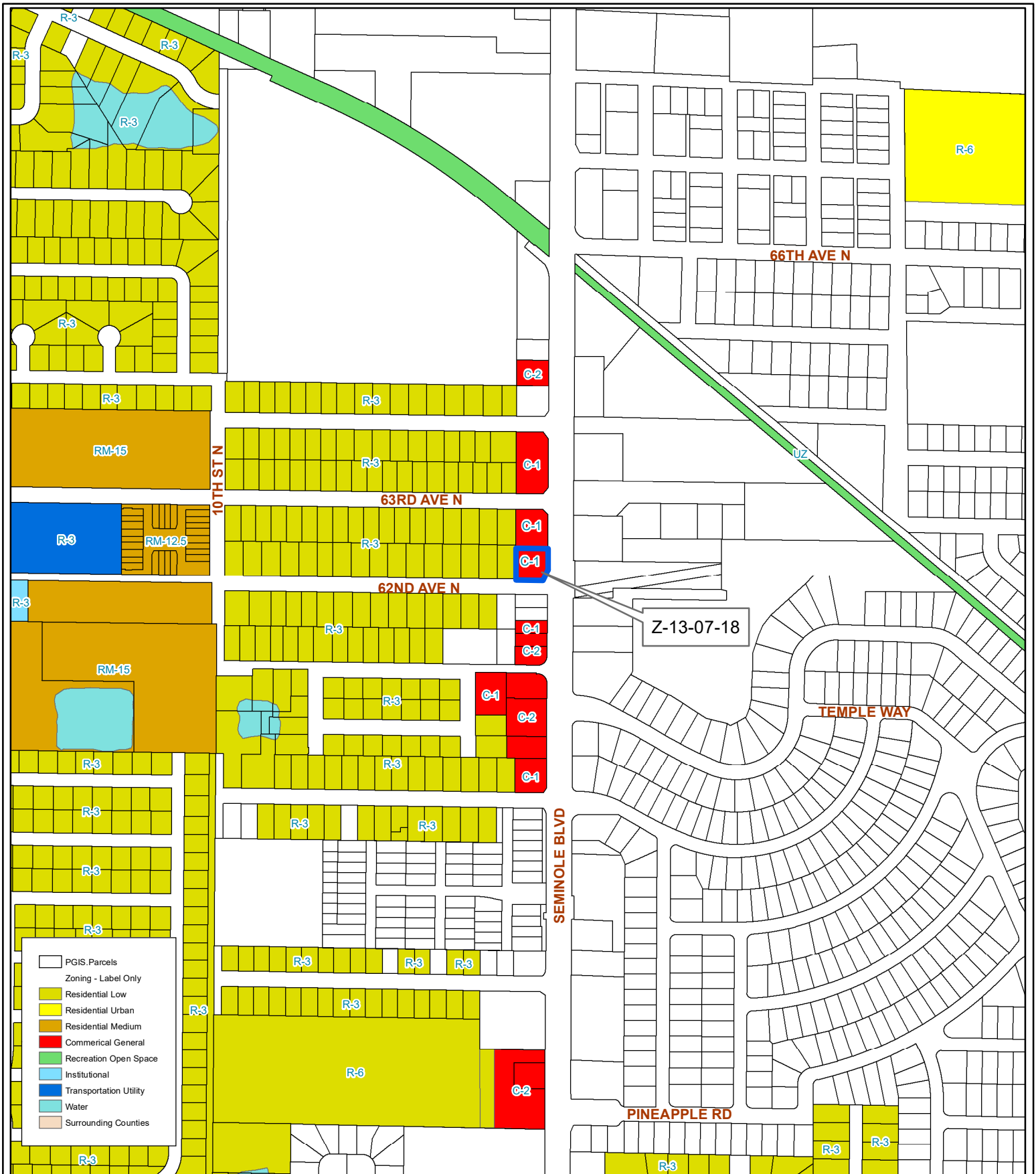
34/30/15/79956/001/0020

Prepared by: Pinellas County Planning Department



Date: 5/22/2018

1 inch = 4.5 miles



**Z-13-07-18**  
**Current Zoning**

**Zoning**      **From:** C-1, Neighborhood Commercial  
**To:** C-2, General Retail Commercial & Limited Services

34/30/15/79956/001/0020

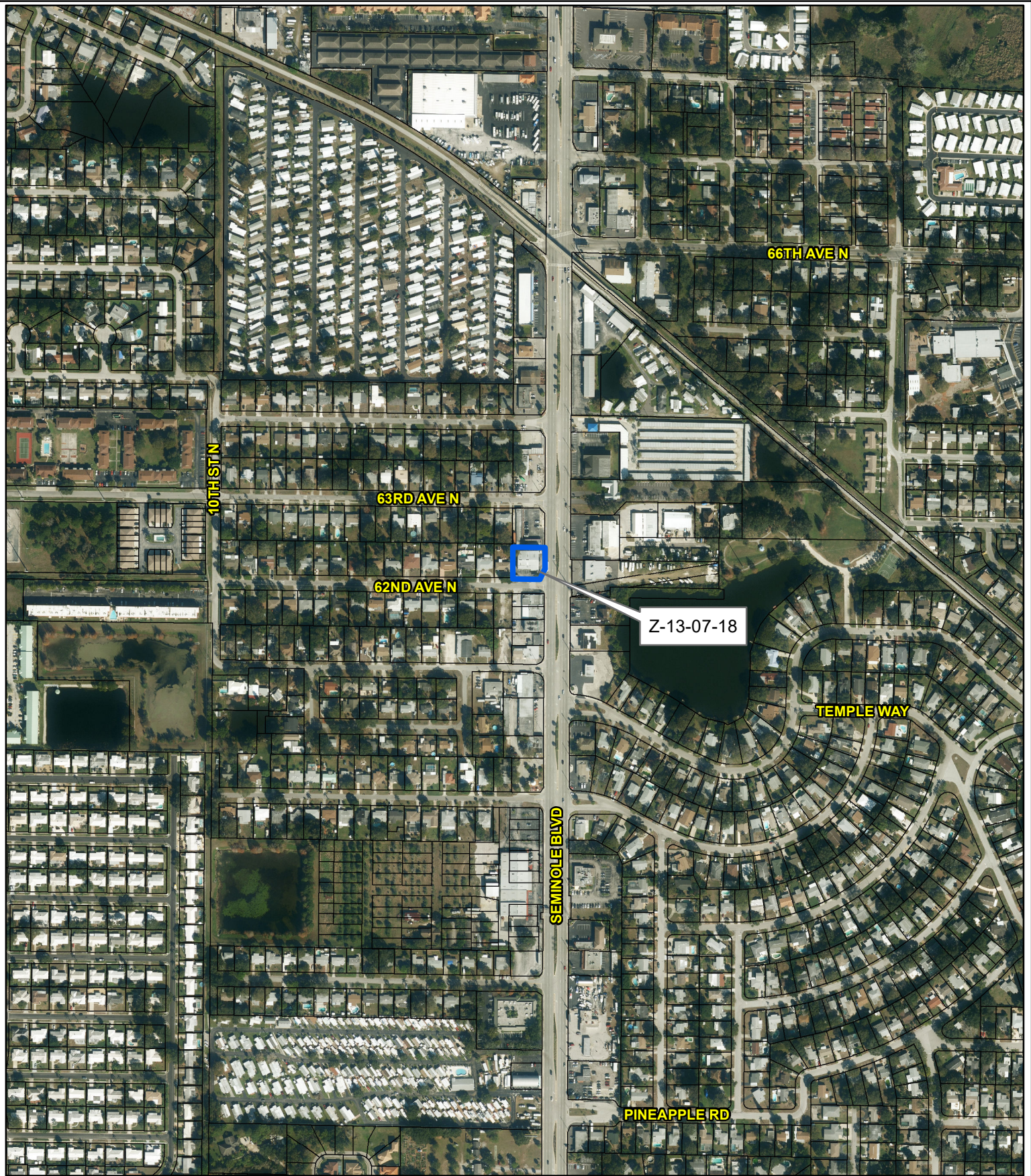
Prepared by: Pinellas County Planning Department



Date: 5/22/2018



1 inch = 0.09 miles



**Z-13-07-18**  
**Aerial Map**

**Zoning**      **From:** C-1, Neighborhood Commercial  
**To:** C-2, General Retail Commercial & Limited Services

34/30/15/79956/001/0020

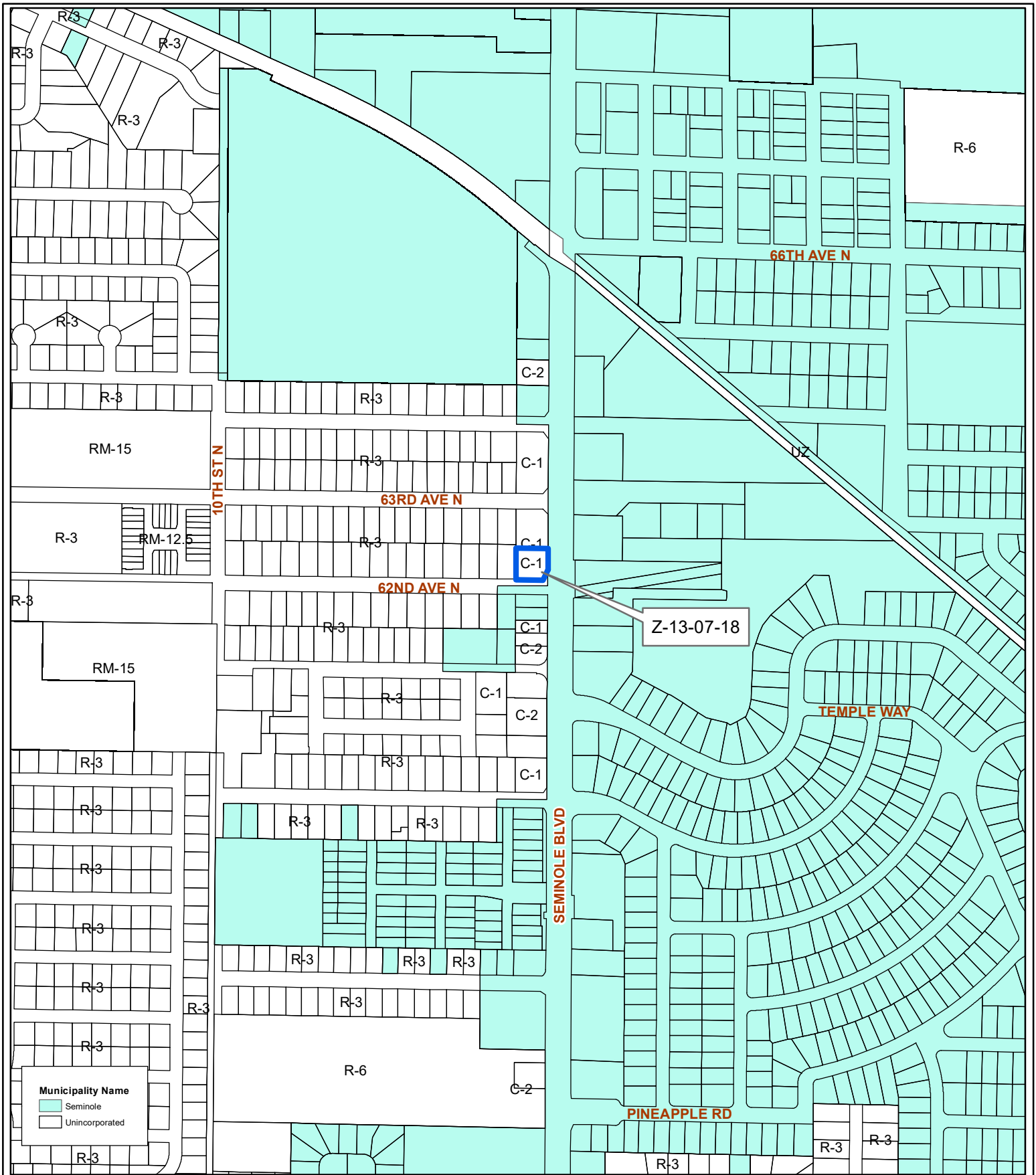
Prepared by: Pinellas County Planning Department



Date: 5/22/2018



1 inch = 0.09 miles



**Z-13-07-18**  
**Municipal Map**

**Zoning**      **From:** C-1, Neighborhood Commercial  
**To:** C-2, General Retail Commercial & Limited Services



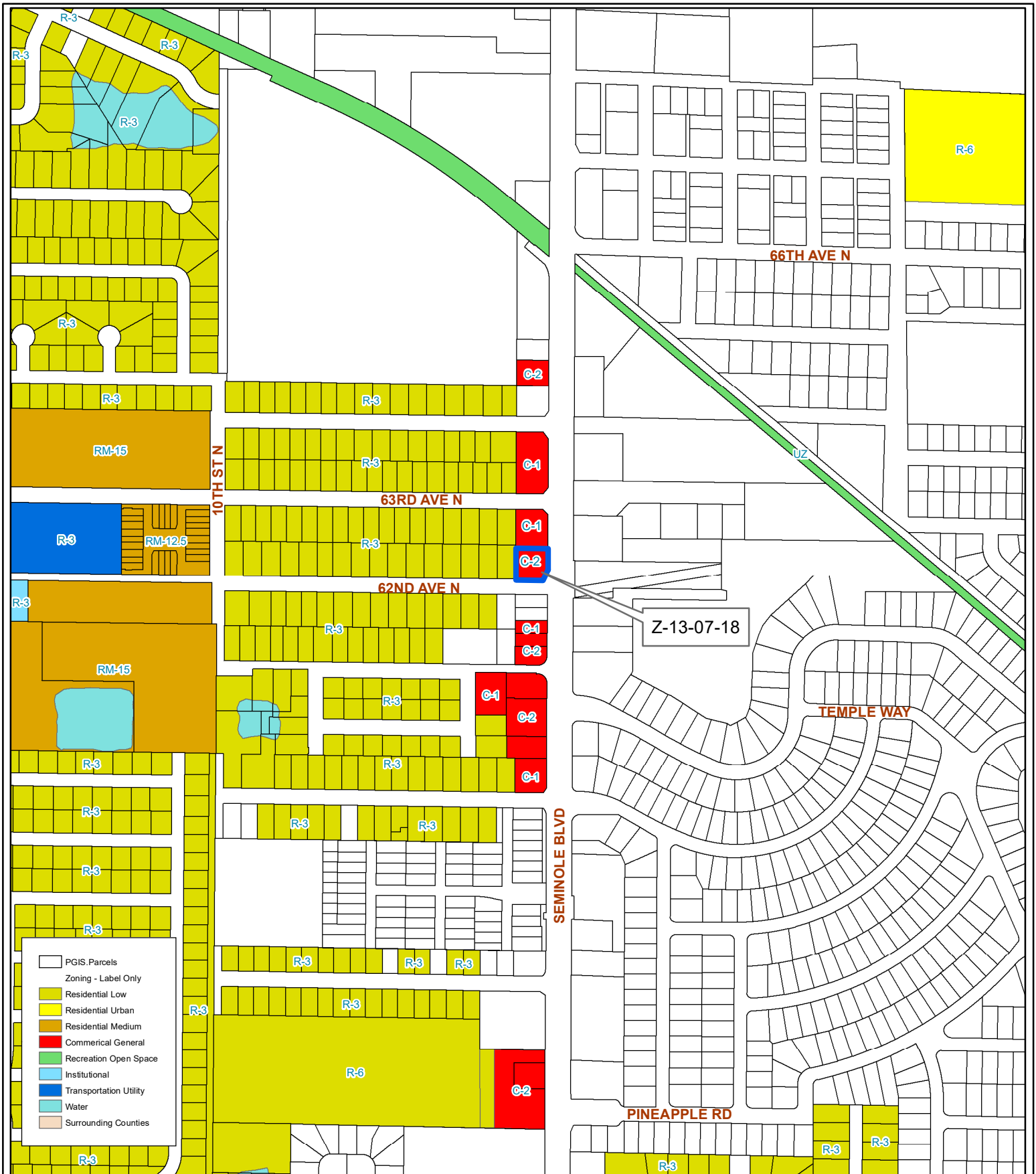
34/30/15/79956/001/0020

Prepared by: Pinellas County Planning Department



Date: 5/22/2018

1 inch = 0.09 miles



- PGIS.Parcels
- Zoning - Label Only
- Residential Low
- Residential Urban
- Residential Medium
- Commercial General
- Recreation Open Space
- Institutional
- Transportation Utility
- Water
- Surrounding Counties

**Z-13-07-18**  
**Proposed Zoning**

**Zoning**      **From:** C-1, Neighborhood Commercial  
**To:** C-2, General Retail Commercial & Limited Services



34/30/15/79956/001/0020

Prepared by: Pinellas County Planning Department



Date: 5/22/2018

1 inch = 0.09 miles