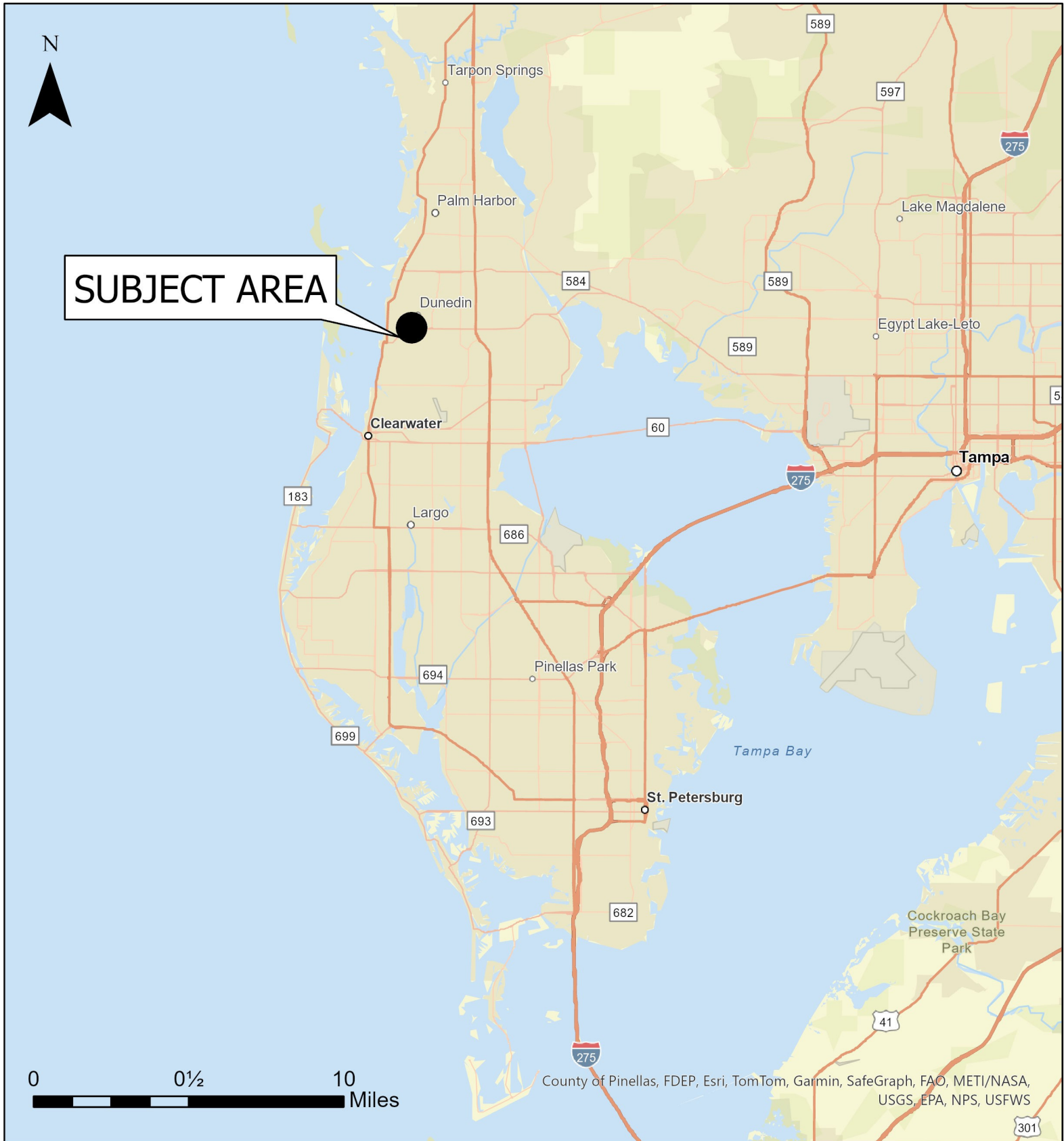


Case CW25-09

Map 1: Location Map



JURISDICTION: Dunedin

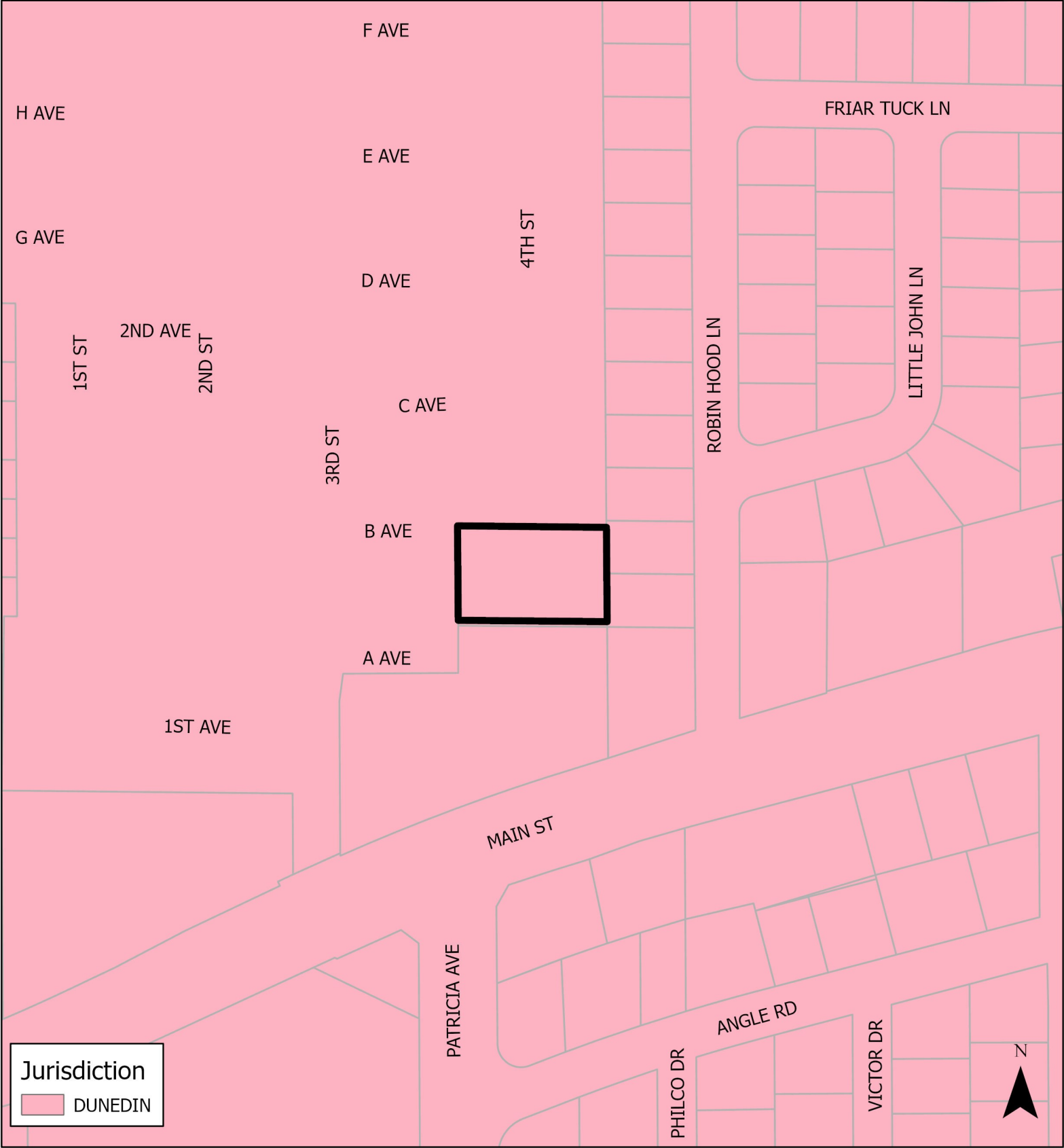
AREA: 0.53 acres m.o.l.

FROM: Retail & Services

TO: Residential Low Medium

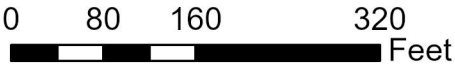
Case CW25-09

Map 2: Jurisdictional Map



JURISDICTION: Dunedin
AREA: 0.53 acres m.o.l.

FROM: Retail & Services
TO: Residential Low Medium



Case CW25-09

Map 3: Aerial Map



JURISDICTION: Dunedin

AREA: 0.53 acres m.o.l.

FROM: Retail & Services

TO: Residential Low Medium



Case CW25-09

Map 4: Current Countywide Plan Map

