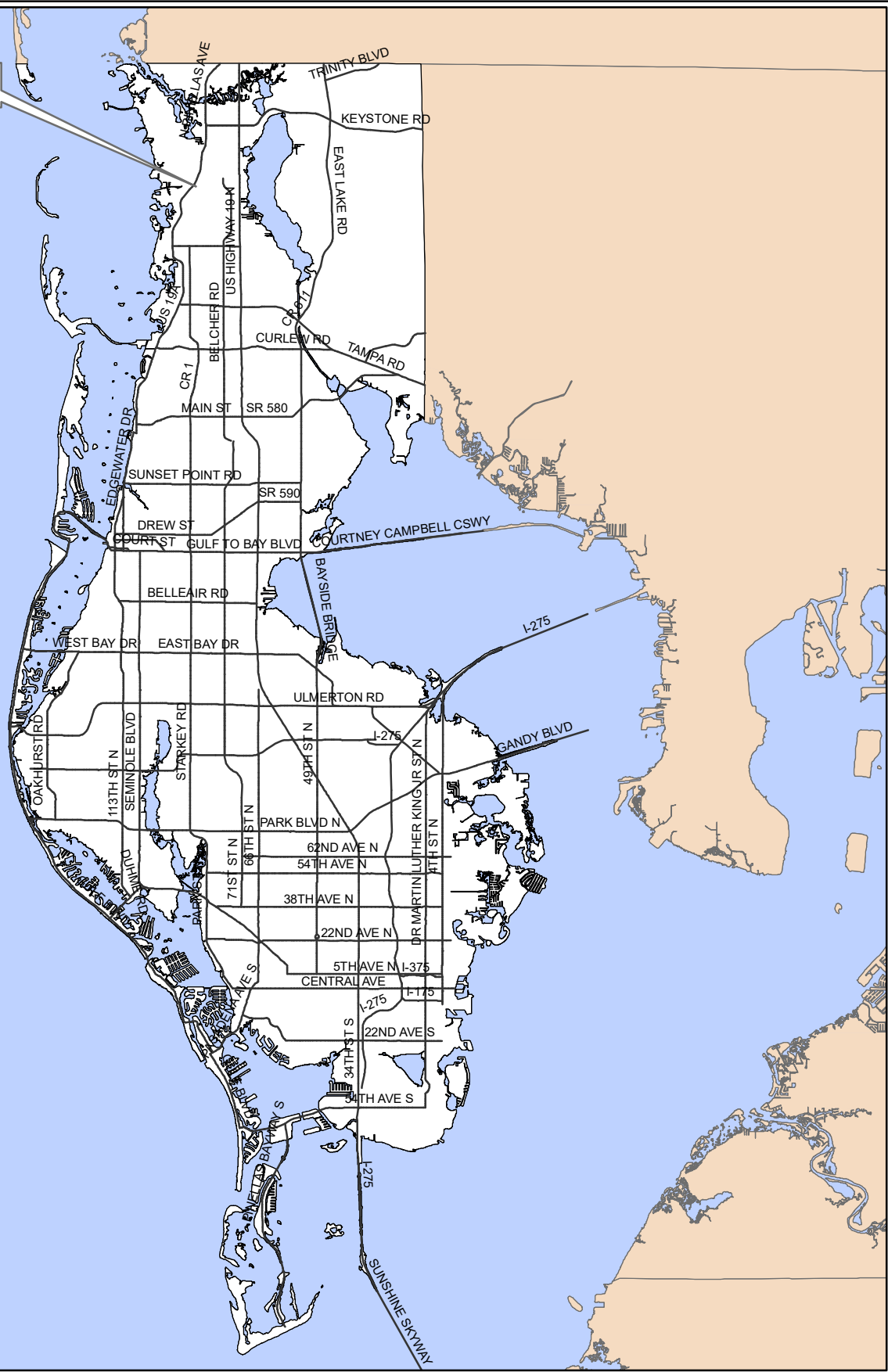


Z/LU-21-1



Surrounding Counties

Z/LU-21-01
Location Map

Zoning From: R-A, Residential Agricultural & R-3, Single Family Residential
To: R-5-CO, Urban Residential-Conditional Overlay (15.2 acres) & PC, Preservation/Conservation (6.3 acres)

Land Use From: Residential Suburban & Preservation
To: Residential Low (15.2 acres) & Preservation (6.3 acres)
With a conditional overlay limiting the number of residential units to 70 1-story villas or 78 2-story townhomes



24/27/15/72162/002/0040, 24/27/15/89280/000/6104, 6300, & 6301

Prepared by: Pinellas County Planning Department

Date: 1/26/2021



1 inch = 4.5 miles



- Parcels
- Zoning - Label Only**
- Residential Suburban
- Residential Low
- Residential Low Medium
- Residential Medium
- Commercial General
- Employment
- Residential Office General
- Preservation
- Preservation Resource Management
- Recreation Open Space
- Institutional
- Transportation Utility
- Water

Z/LU-21-01
Current Land Use & Zoning

Zoning **From:** R-A, Residential Agricultural & R-3, Single Family Residential
To: R-5-CO, Urban Residential-Conditional Overlay (15.2 acres) & PC, Preservation/Conservation (6.3 acres)

Land Use **From:** Residential Suburban & Preservation
To: Residential Low (15.2 acres) & Preservation (6.3 acres)
 With a conditional overlay limiting the number of residential units to 70 1-story villas or 78 2-story townhomes



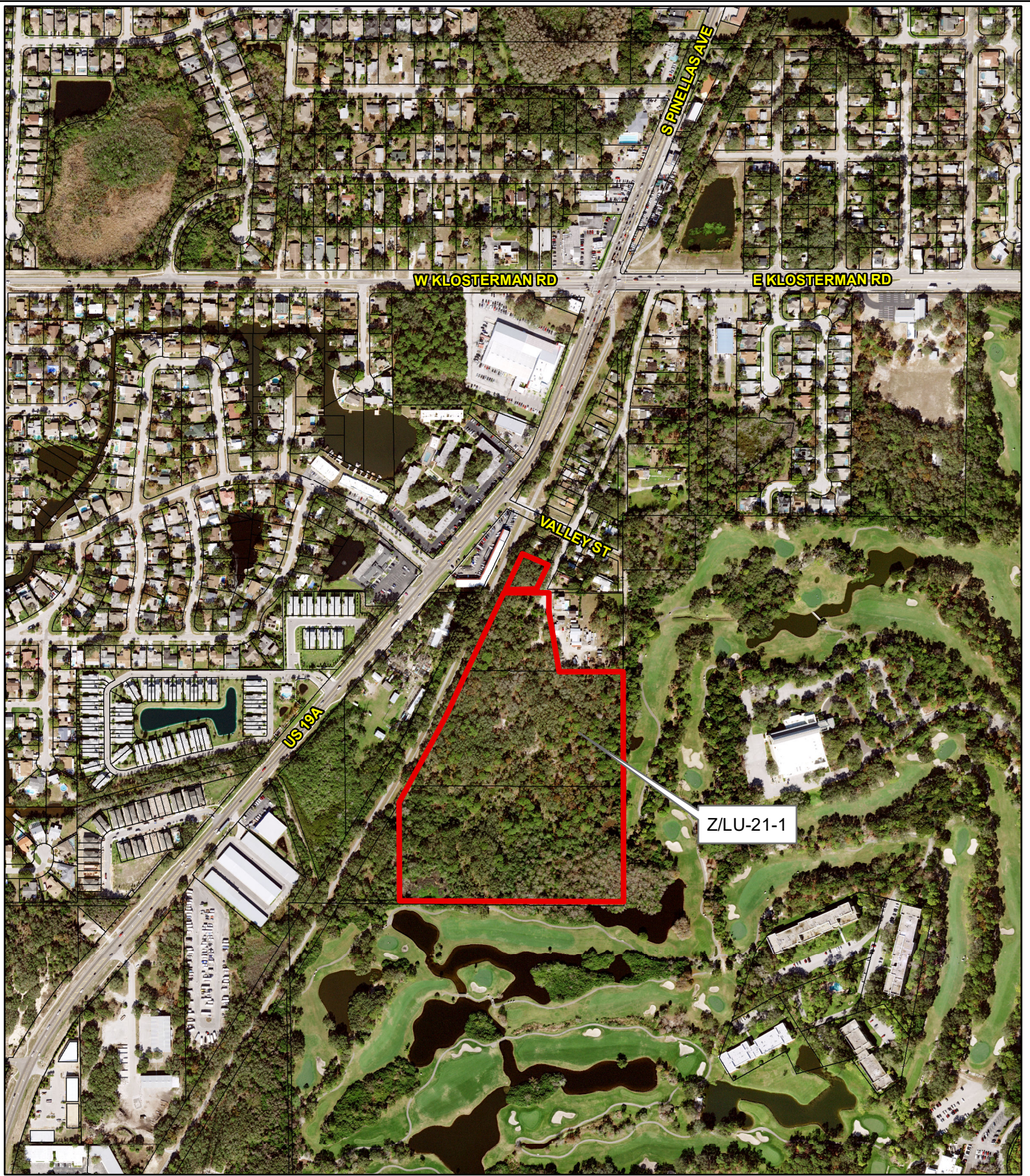
24/27/15/72162/002/0040, 24/27/15/89280/000/6104, 6300, & 6301

Prepared by: Pinellas County Planning Department

Date: 1/26/2021



1 inch = 0.1 miles



Z/LU-21-01

Aerial Map

Zoning

From: R-A, Residential Agricultural & R-3, Single Family Residential
To: R-5-CO, Urban Residential-Conditional Overlay (15.2 acres) & PC, Preservation/Conservation (6.3 acres)

Land Use

From: Residential Suburban & Preservation
To: Residential Low (15.2 acres) & Preservation (6.3 acres)
 With a conditional overlay limiting the number of residential units to 70 1-story villas or 78 2-story townhomes

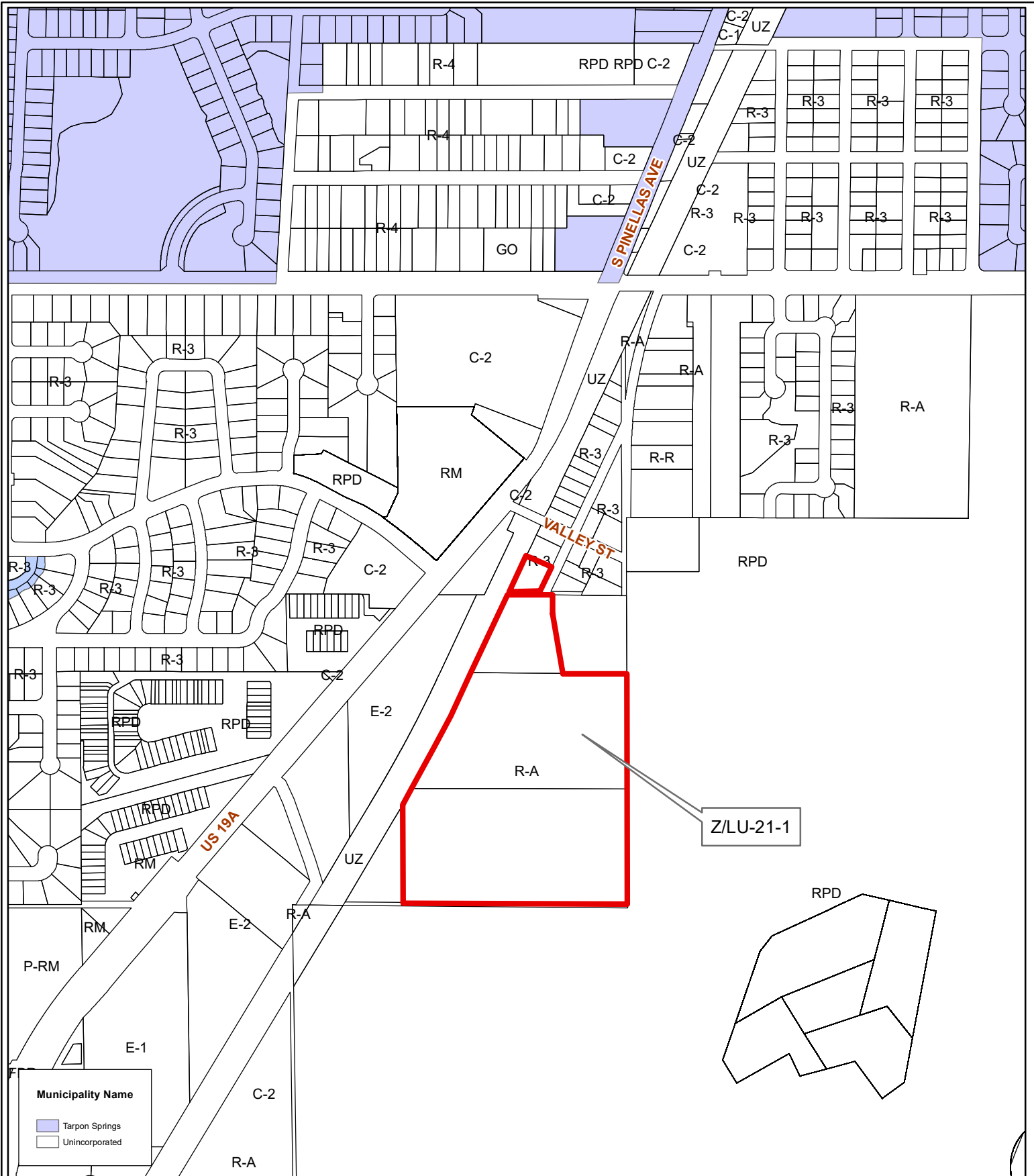
24/27/15/72162/002/0040, 24/27/15/89280/000/6104, 6300, & 6301

Prepared by: Pinellas County Planning Department

Date: 1/26/2021



1 inch = 0.1 miles



Z/LU-21-01
Municipal Map

Zoning

From: R-A, Residential Agricultural & R-3, Single Family Residential
To: R-5-CO, Urban Residential-Conditional Overlay (15.2 acres) & PC, Preservation/Conservation (6.3 acres)

Land Use

From: Residential Suburban & Preservation
To: Residential Low (15.2 acres) & Preservation (6.3 acres)
 With a conditional overlay limiting the number of residential units to 70 1-story villas or 78 2-story townhomes

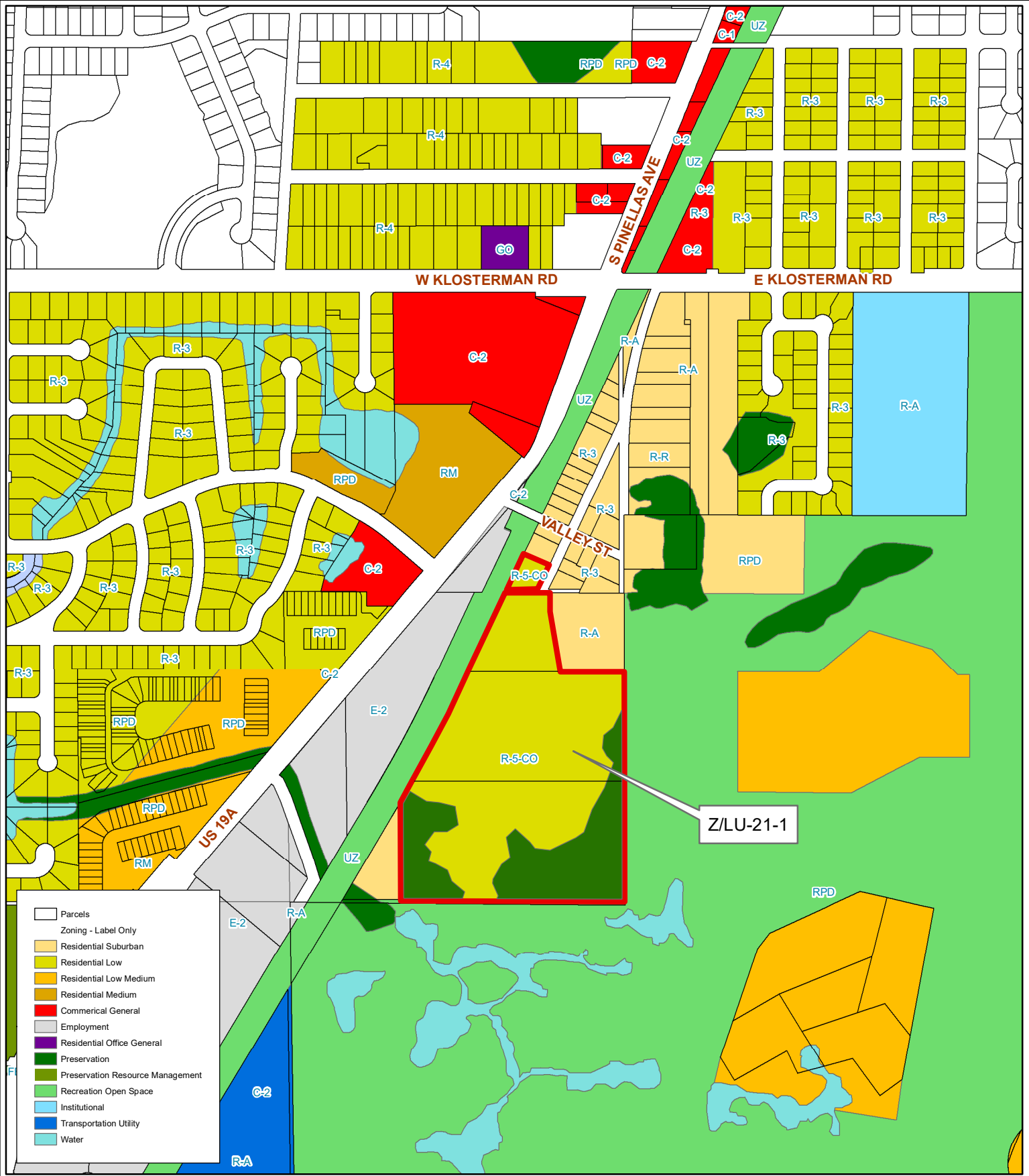
24/27/15/72162/002/0040, 24/27/15/89280/000/6104, 6300, & 6301

Prepared by: Pinellas County Planning Department

Date: 1/26/2021



1 inch = 0.1 miles



- Parcels
- Zoning - Label Only**
- Residential Suburban
- Residential Low
- Residential Low Medium
- Residential Medium
- Commercial General
- Employment
- Residential Office General
- Preservation
- Preservation Resource Management
- Recreation Open Space
- Institutional
- Transportation Utility
- Water

**Z/LU-21-01
Proposed Land
Use & Zoning**

Zoning **From:** R-A, Residential Agricultural & R-3, Single Family Residential
To: R-5-CO, Urban Residential-Conditional Overlay (15.2 acres)
 & PC, Preservation/Conservation (6.3 acres)

Land Use **From:** Residential Suburban & Preservation
To: Residential Low (15.2 acres) & Preservation (6.3 acres)
 With a conditional overlay limiting the number of residential units to
 70 1-story villas or 78 2-story townhomes



24/27/15/72162/002/0040, 24/27/15/89280/000/6104, 6300, & 6301

Prepared by: Pinellas County Planning Department

Date: 1/26/2021



1 inch = 0.1 miles