

**Map 1 - Location**

**CASE #:** CW16-12

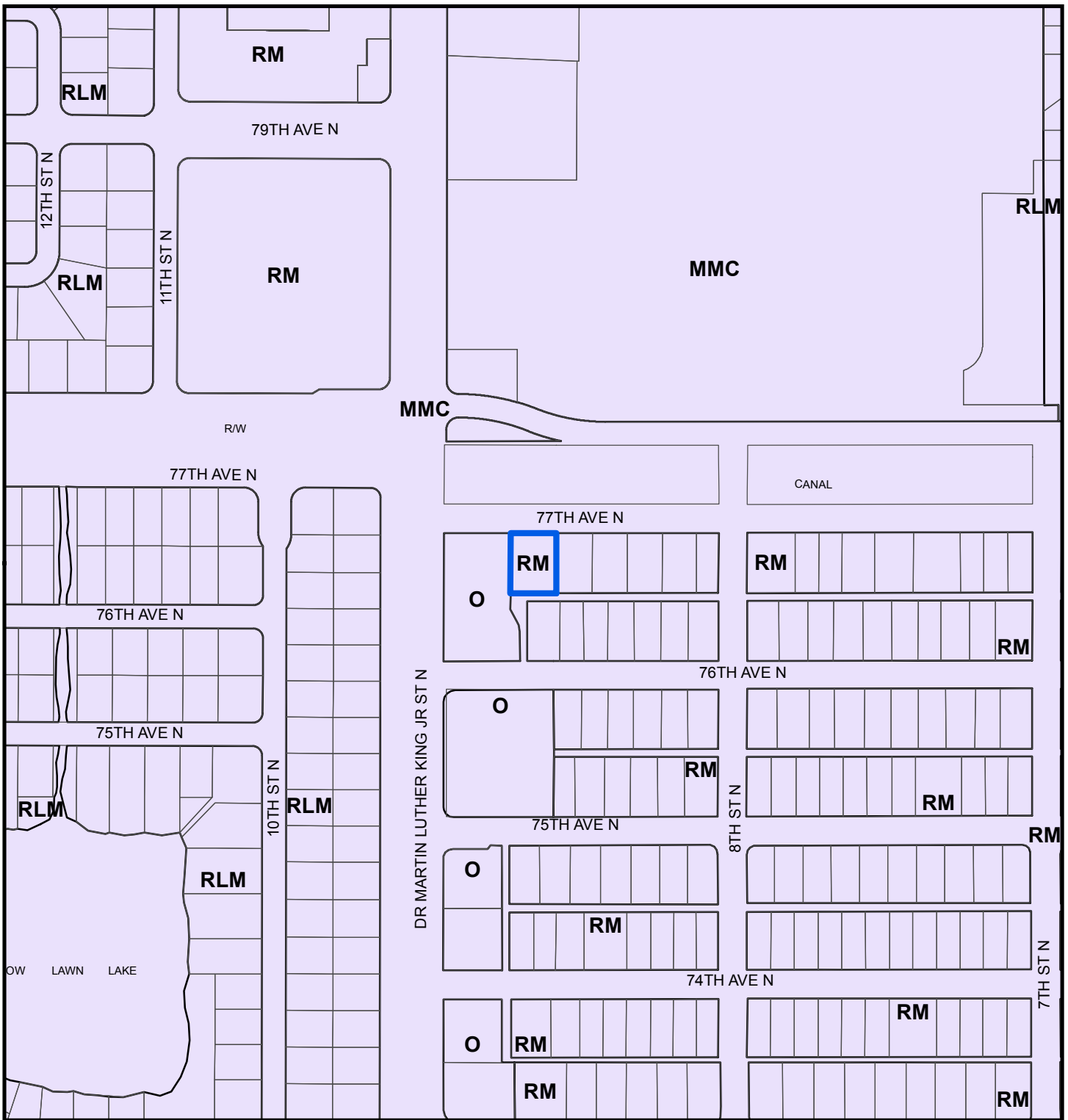
**FROM:** Residential Medium

**AREA:** 0.3 Acres

**JURISDICTION:** St. Petersburg

**TO:** Office





**Map 2 - Current Countywide Plan Map & Jurisdictional Map**

**CASE #:** CW16-12

**FROM:** Residential Medium

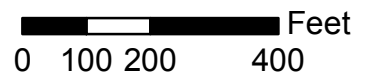
**AREA:** 0.3 Acres

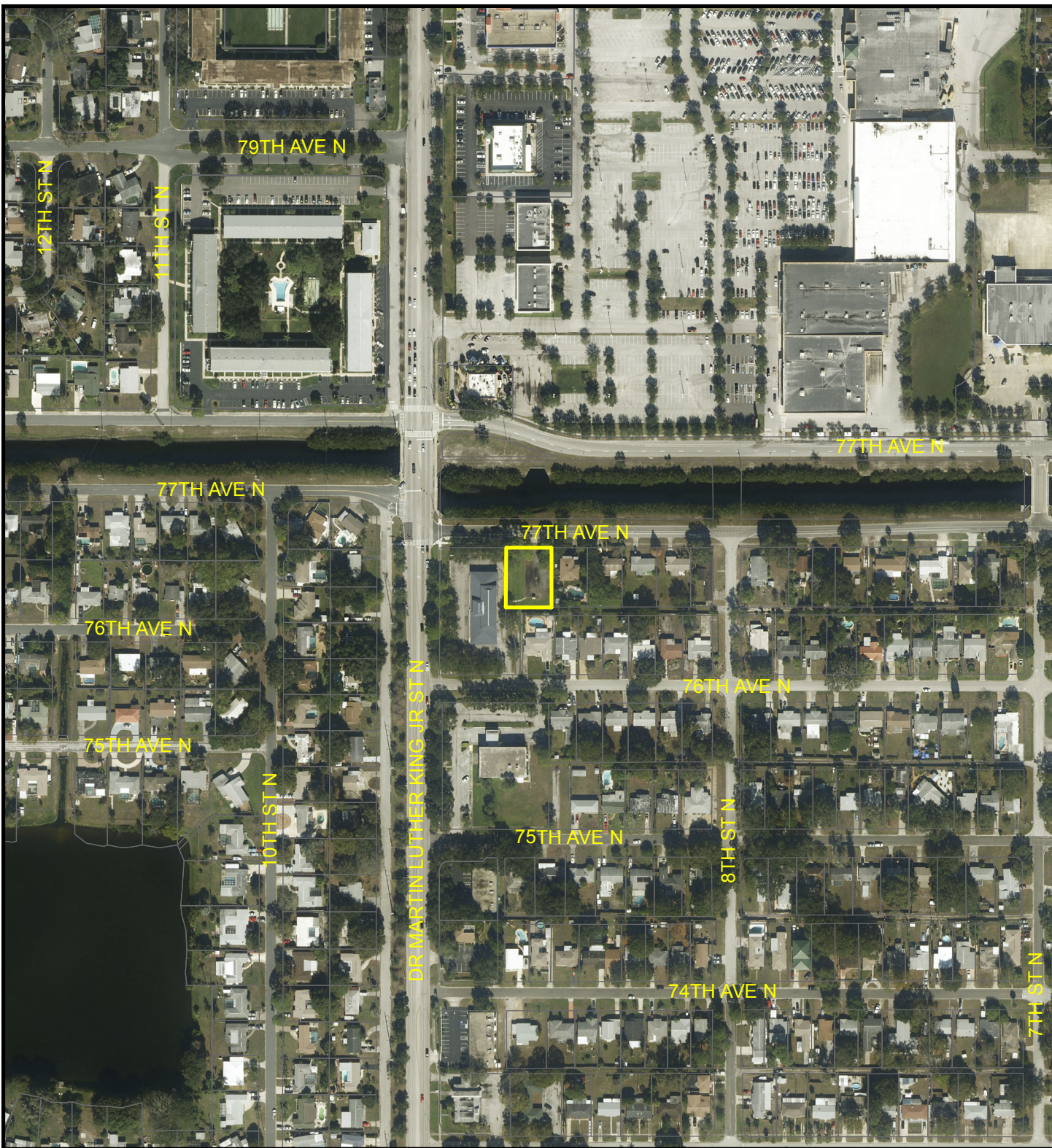
**JURISDICTION:** St. Petersburg

**TO:** Office

**LEGEND:**

 St Petersburg





**Map 3 - Aerial**

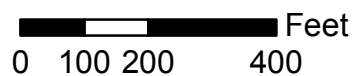
**CASE #:** CW16-12

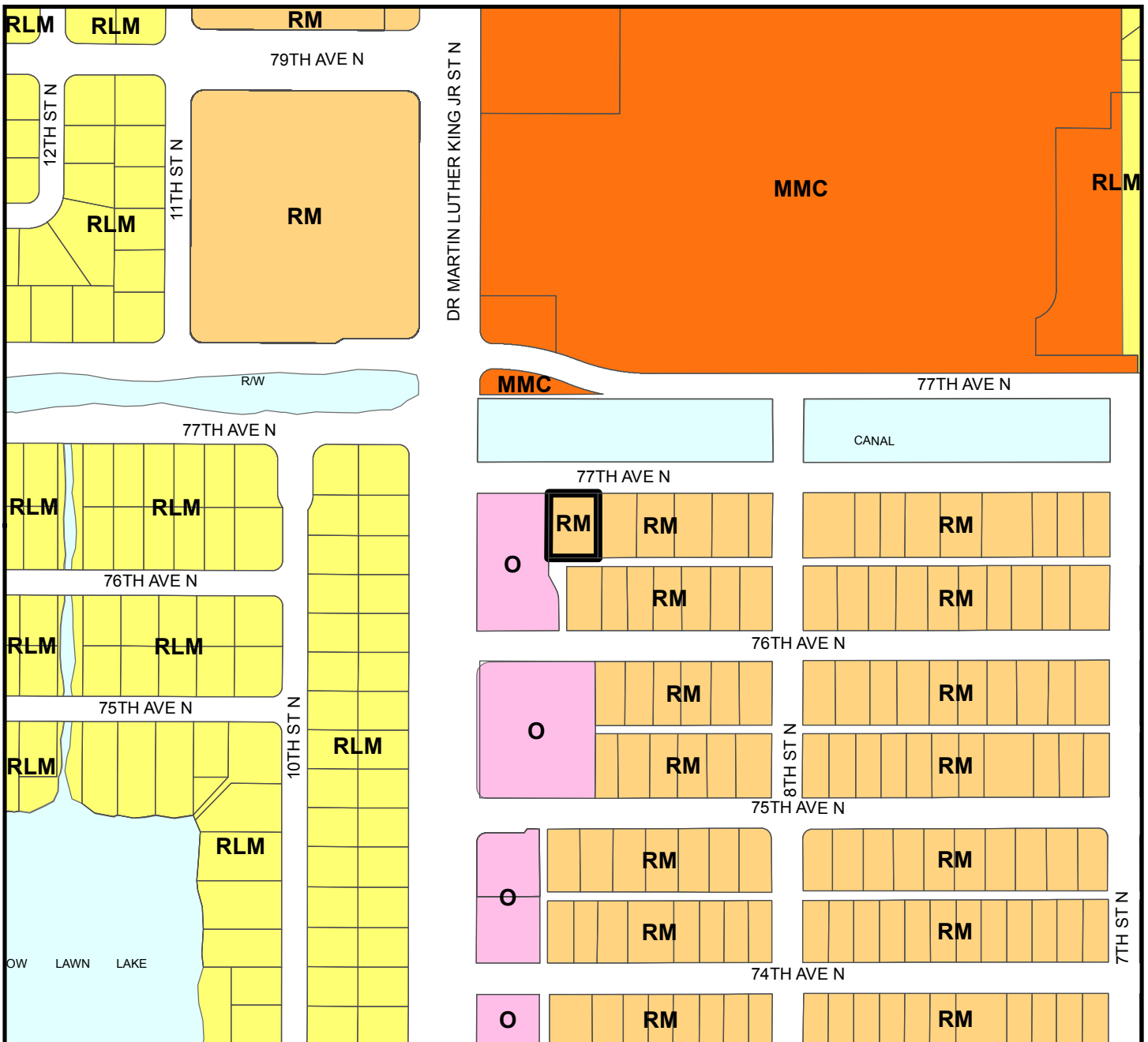
**FROM:** Residential Medium

**AREA:** 0.3 Acres

**JURISDICTION:** St. Petersburg

**TO:** Office





**Plan Map Categories**

- Residential Low Medium
- Office
- Residential Medium
- Multimodal Corridor

**Map 4 - Current Countywide Plan Map**

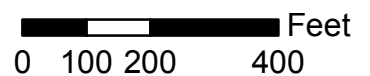
CASE #: CW16-12

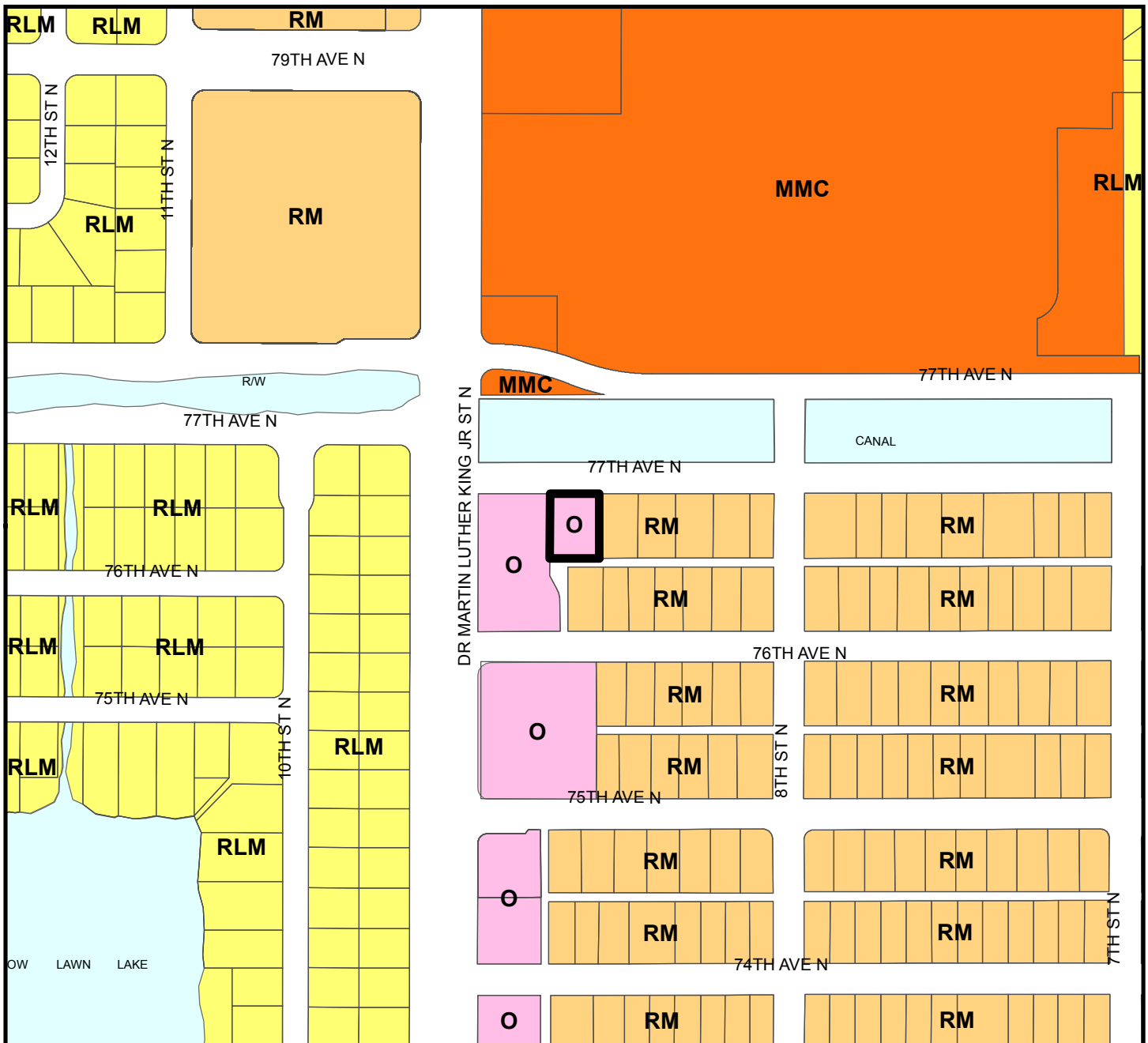
FROM: Residential Medium

AREA: 0.3 Acres

JURISDICTION: St. Petersburg

TO: Office



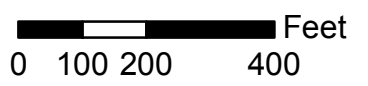


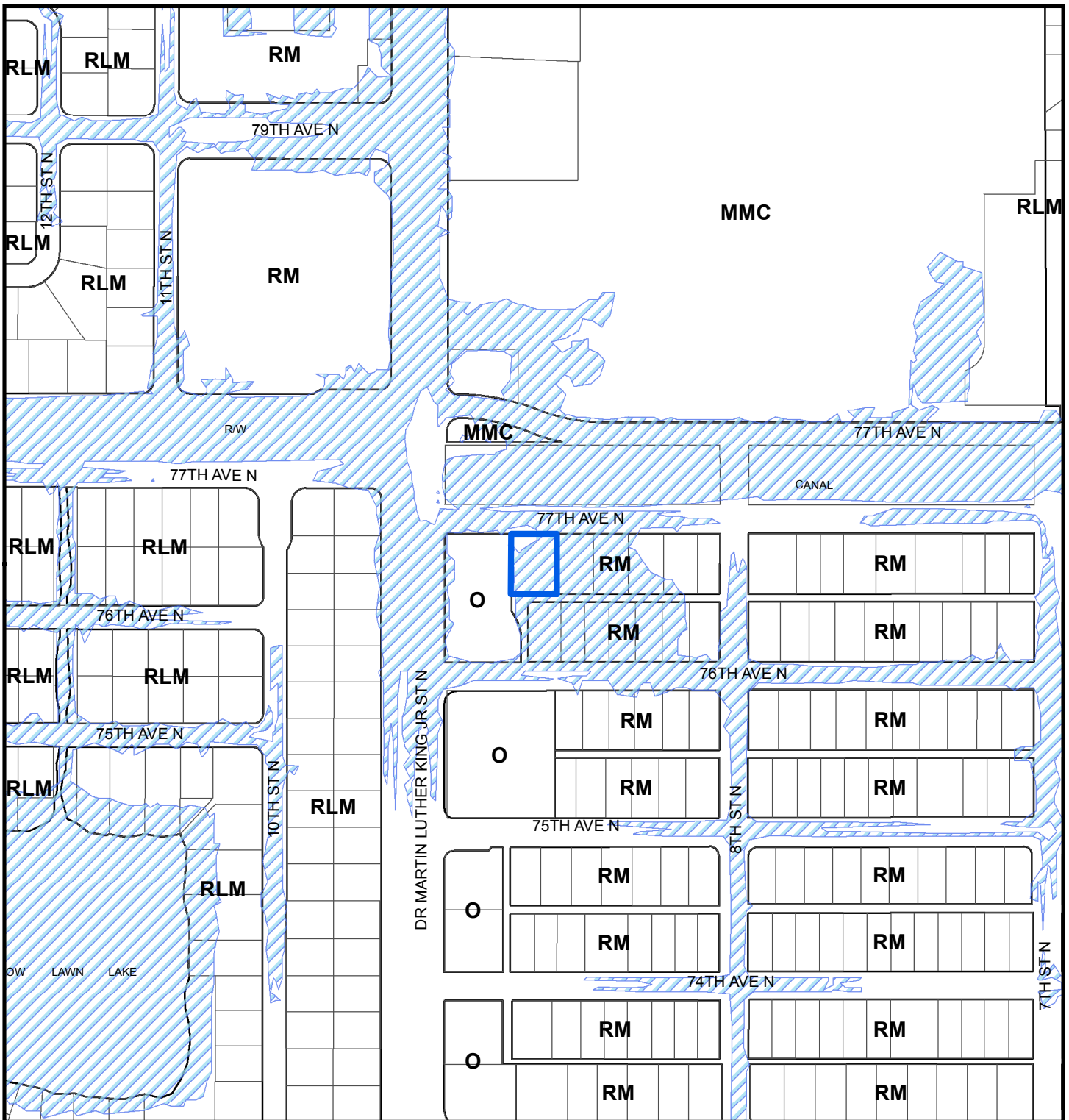
**Plan Map Categories**

- Residential Low Medium
- Residential Medium
- Office
- Multimodal Corridor

**Map 5 - Proposed Countywide Plan Map**

CASE #: CW16-12                      FROM: Residential Medium                      AREA: 0.3 Acres  
 JURISDICTION: St. Petersburg                      TO: Office





**Map 6 - Coastal High Hazard Area (CHHA)**

**CASE #:** CW16-12

**FROM:** Residential Medium

**AREA:** 0.3 Acres

**JURISDICTION:** St. Petersburg

**TO:** Office

**LEGEND:**

 CHHA

