

RESOLUTION NO. 26-33

KEN BURKE, CLERK OF COURT  
AND COMPTROLLER PINELLAS COUNTY, FL  
INST# 2026138798 05/22/2026 09:53 AM  
OFF REC BK: 23568 PG: 873-874  
DocType:GOV

A RESOLUTION OF THE BOARD OF COUNTY COMMISSIONERS OF PINELLAS COUNTY, FLORIDA, DEDICATING A COUNTY-OWNED PARCEL KNOWN AS LOT 38, LESS THE WEST 47 FEET THEREOF, KAPOK FOREST SUBDIVISION, PLAT BOOK 47, PAGE 47, IN SECTION 9, TOWNSHIP 29 SOUTH, RANGE 16 EAST, PINELLAS COUNTY, AS PUBLIC RIGHT-OF-WAY; AND PROVIDING FOR AN EFFECTIVE DATE.

**WHEREAS**, by virtue of a deed recorded in Official Record 6088, Page 1533, Public Records of Pinellas County, Florida, Pinellas County owns a parcel of land at the intersection of N McMullen Booth Road and Kapok Kove Drive, Clearwater, designated as Parcel # 09-29-16-45108-000-0380, more particularly described in Exhibit A, attached hereto and fully incorporated herein; and

**WHEREAS**, the parcel contains a County-owned, County-maintained sidewalk that has been used by the general public for many years; and

**WHEREAS**, it is in the best interest of the County to dedicate the parcel as public right-of-way to align with the current use of the parcel.

**NOW THEREFORE, BE IT RESOLVED**, that the Board of County Commissioners of Pinellas County, Florida, in a regular session duly assembled on this 19th day of May, 2026, hereby dedicates to the public as right-of-way the lands depicted in Exhibit A attached hereto, and authorizes the Clerk of the Circuit Court to file the Resolution in the Board Records and record the Resolution in the Official Records of Pinellas County.

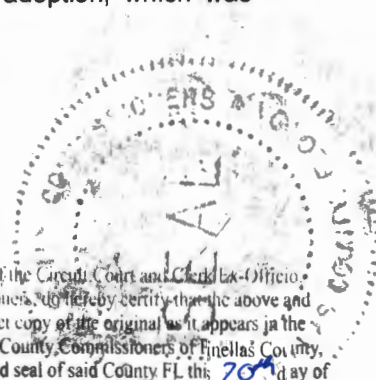
**EFFECTIVE DATE.** This Resolution shall become effective upon adoption as provided by law.

Commissioner Peters offered the foregoing Resolution and moved its adoption, which was seconded by Commissioner Latvala, and upon roll call the vote was:

AYES: Eggers, Latvala, Flowers, Nowicki, Peters, Scherer, and Scott.

NAYS: None.

ABSENT AND NOT VOTING: None.



I, Kenneth P. Burke, Clerk of the Circuit Court and Clerk Ex-Officio Board of County Commissioners, do hereby certify that the above and foregoing is a true and correct copy of the original as it appears in the official files of the Board of County Commissioners of Pinellas County, Florida. Witness my hand and seal of said County FL this 20th day of May, 2026.  
KENNETH P. BURKE, Clerk of the Circuit Court Ex-Officio Clerk of the Board of County Commissioners, Pinellas County, Florida.

By [Signature]  
Deputy Clerk

PINELLAS COUNTY  
 PUBLIC WORKS  
 SURVEY AND MAPPING DIVISION  
 22211 U.S. HIGHWAY 19 N.  
 CLEARWATER, FLORIDA 33765-2328  
 PHONE # (727) 464-8904



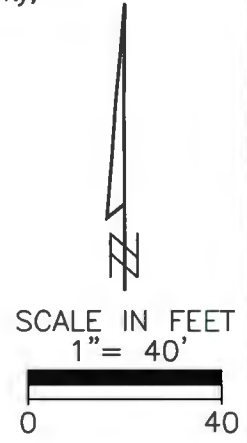
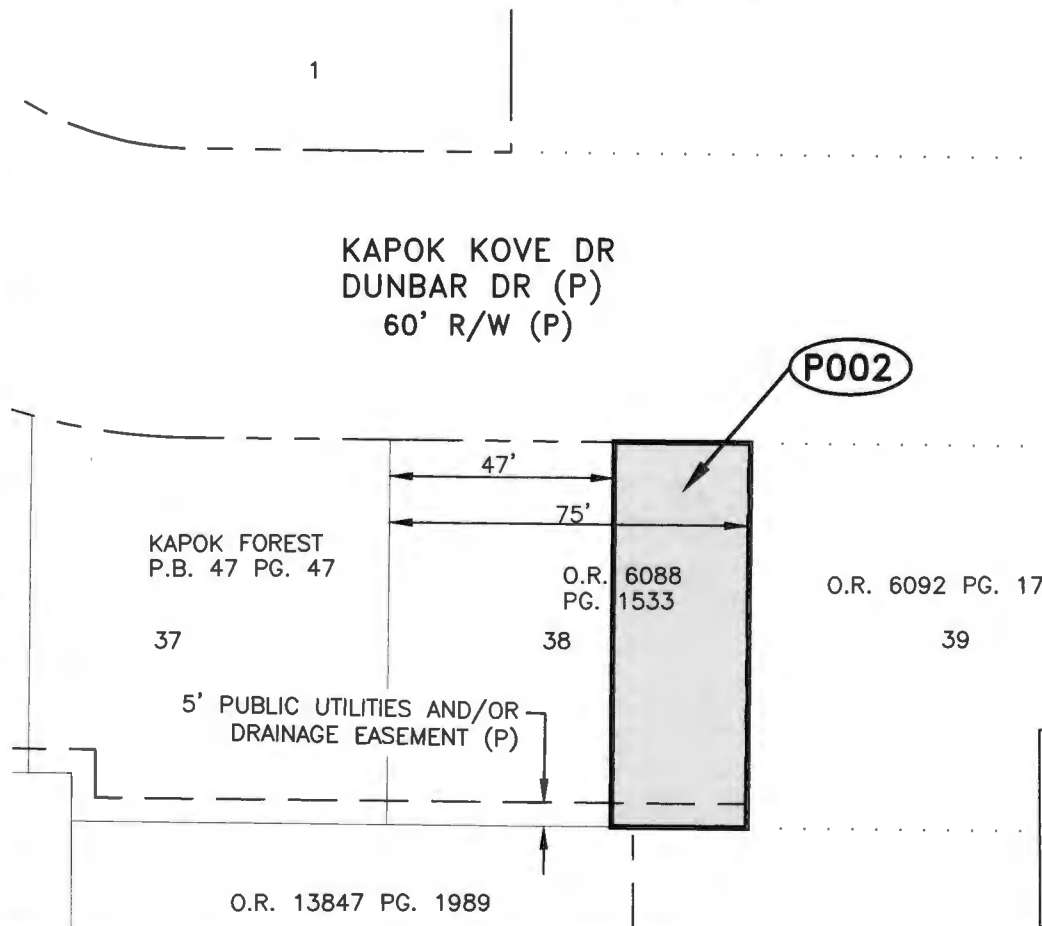
SECTION 09, TOWNSHIP 29 SOUTH, RANGE 16 EAST

DESCRIPTION

Lot 38, LESS the West 47 feet thereof, KAPOK FOREST Subdivision, according to the plat thereof, as recorded in Plat Book 47, Page 47, public records of Pinellas County, Florida, in the Northwest 1/4 and the Southwest 1/4 of Section 9, Township 29 South, Range 16 East, Pinellas County, Florida.

Containing: 2,240 square feet or 0.051 acres more or less

SKETCH--NOT A SURVEY

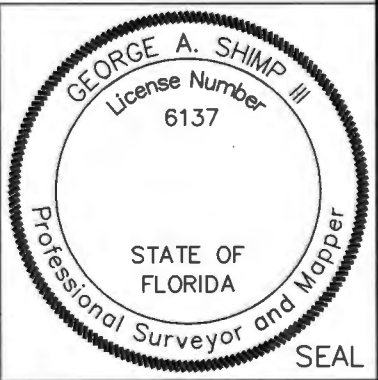


MCMULLEN  
 BOOTH RD  
 HAINES RD (P)

LEGEND	
O.R.	OFFICIAL RECORD
(P)	PLAT
P.B.	PLAT BOOK
PG.	PAGE
R/W	RIGHT-OF-WAY

Additions or deletions by other than the Professional Surveyor and Mapper in responsible charge are prohibited. Sketch and/or Description has been electronically signed and sealed using a digital signature and date. Printed copies of this document are not considered signed and sealed and the signature must be verified on any electronic copies.

The above Sketch and Land description was prepared under my supervision and is true and correct to the best of my knowledge and belief.  
*George A Shimp III* 2025.08.08 08:44:44 -04'00'



GEORGE A. SHIMP III, PROFESSIONAL SURVEYOR AND MAPPER LICENSE NUMBER: 6137, STATE OF FLORIDA			DATE	
S.F.N.: 1753	P.I.D.: 001851B	CALCULATED BY: AZ	CHECKED BY: TS	Pinellas County Survey and Mapping Division

S:\Divisions\Survey\SFN Projects\sfh1753\dwg\P002.dwg, Aug 08, 2025 - 8:38am