

OVERVIEW: THE LURIE CIVIC BUILDING
and the LEGACY FUND

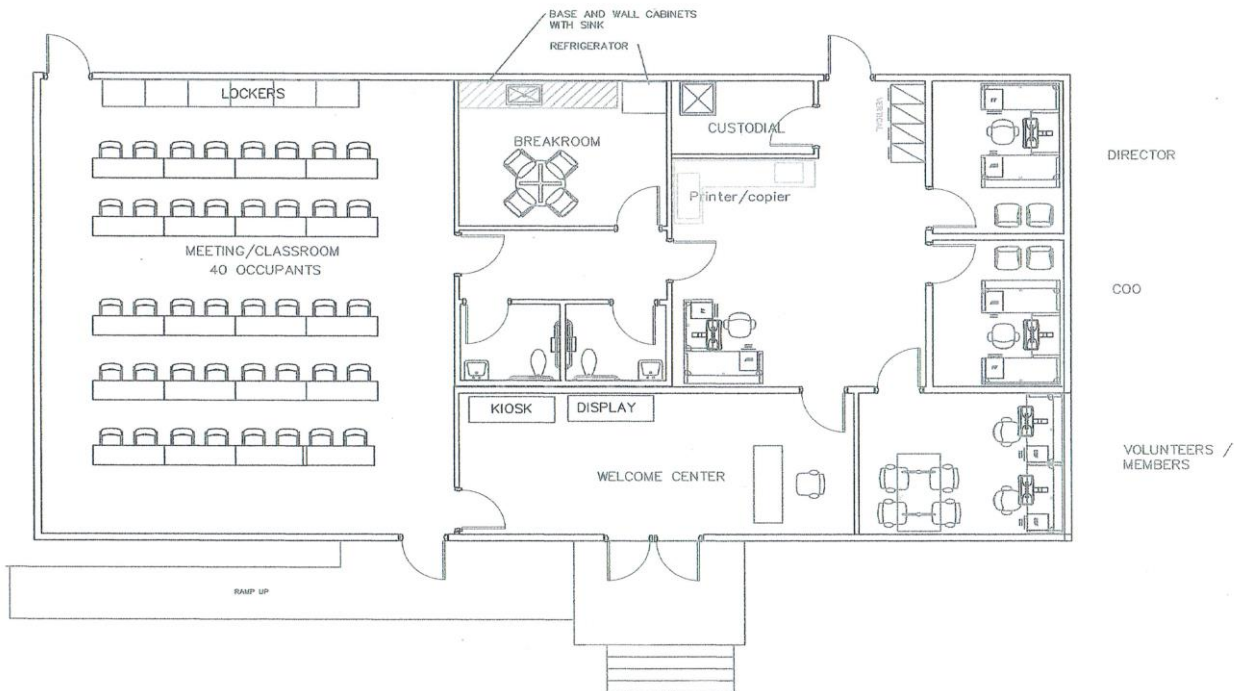
Nearly four years ago, Dr. Ed and Vivian Lurie approached the City of Seminole with a proposal to donate half a million dollars for construction of a Civic Building for our community. The vision was to have a structure which would serve as a “home” for area civic clubs; a meeting space for the clubs, the County, City and area businesses; and a welcome center for all four, and the community overall. The facility would include offices for the Seminole Area Chamber of Commerce, which together with the clubs, County and City, builds a strong community through partnerships, civic engagement, outreach programs and various local events.

The vision was enthusiastically endorsed, but over time, complications arose that were out of our control. Fortunately, a new partner emerged and the building site has now moved to the SPC-Seminole Campus near the entrance road across from the Recreation Center. The College involvement brings an added element of student engagement, and an ability to renew the emphasis on business classes, especially entrepreneurship.

With the passage of time, building and site preparation costs have risen significantly. An initial estimate by the College to construct a modular building on site was right at the half million dollar mark, but the hard bids came in \$90,000+ over that initial estimate.

Now is the time to bring this vision to reality. Dr. and Mrs. Lurie have donated the money to the College. The preliminary site work has been done, the building design completed, and bids secured. The City and the Chamber have each donated \$20,000 or more to the project. Now we are reaching out to the County, Seminole businesses, organizations, and the community to provide a legacy donation for this unique initiative.

This is so reflective of our community! It takes all the best of who we are and puts it in the heart of Seminole for all to see and participate. It has the potential to bring all our key community partners – the County, the City, the College and the Chamber, together with our active civic clubs – into a location to support programs advancing our whole county. A group of community leaders, working with the College’s Foundation, has created a Legacy Fund to request donations for the building. We respectfully request that County allocate \$20,000 and become a lead partner in this historic initiative.



SEMINOLE CIVIC BUILDING