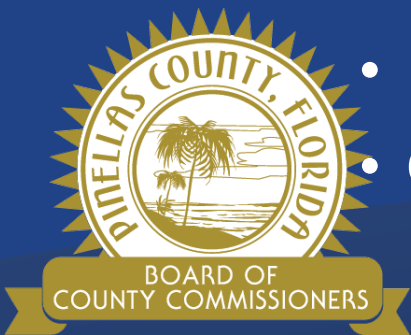


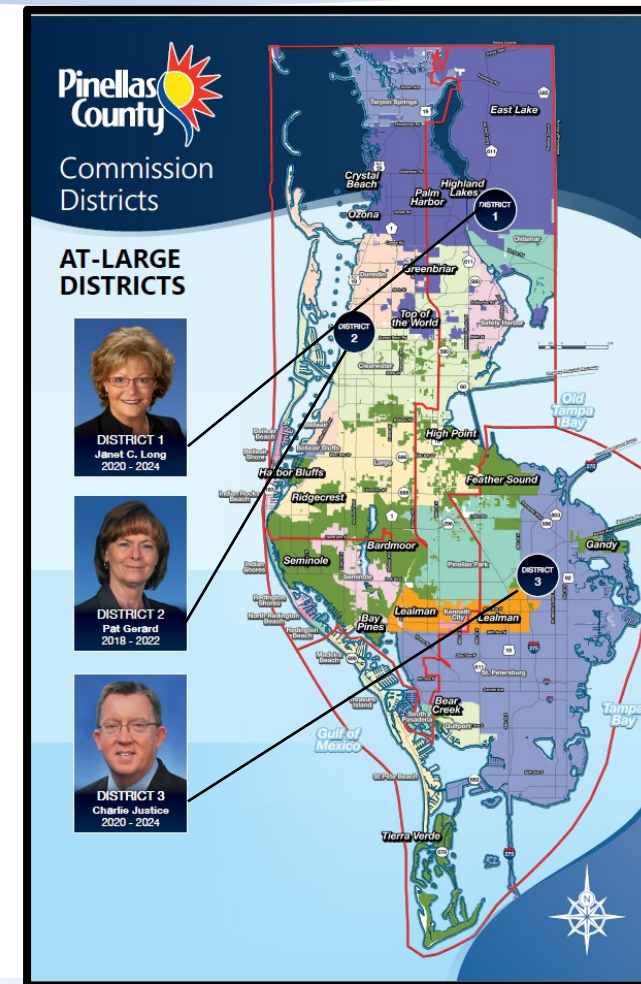
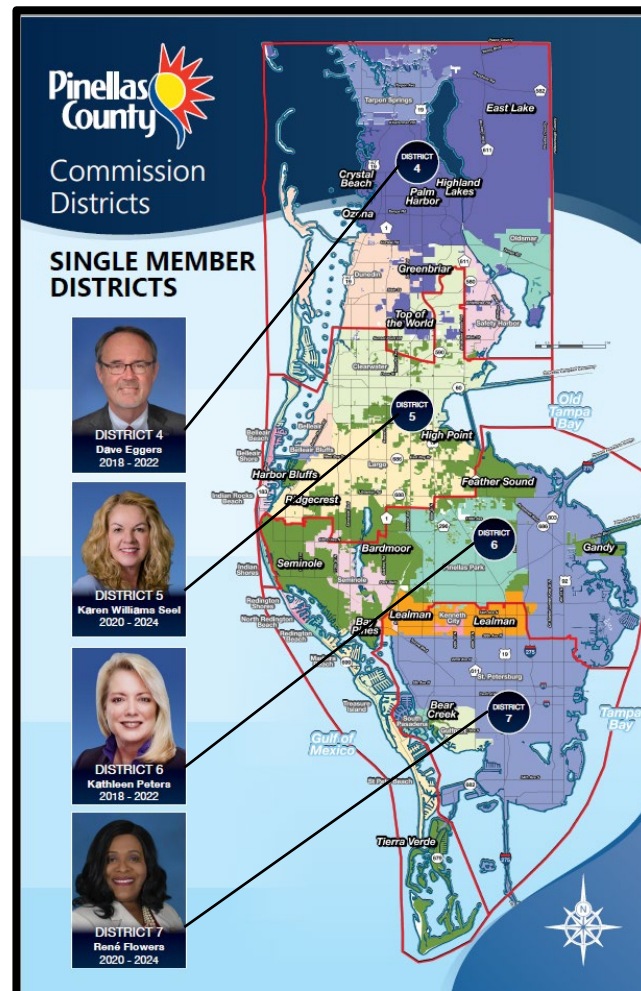
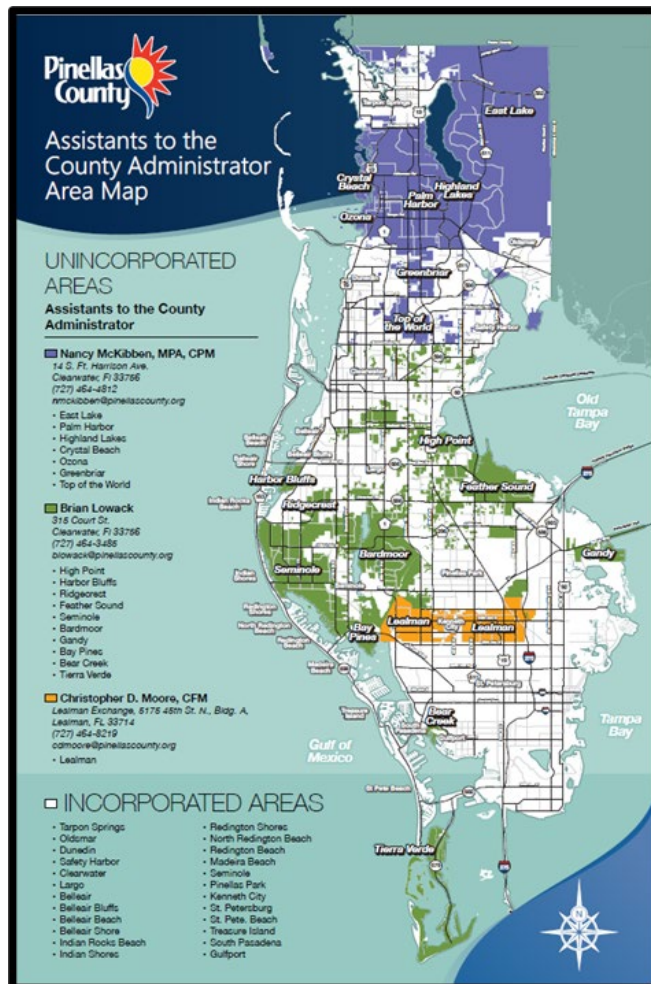
# Unincorporated Communities Update



- **Nancy McKibben** North County
- **Brian Lowack** Mid/South County
- **Chris Moore** Lealman



# Unincorporated Boundary Map



# North County Strategic Goals and Objectives



## Community Services Expansion:

- Palm Harbor Recreation Programmed FY23
- East Lake Library Expansion Programmed FY26

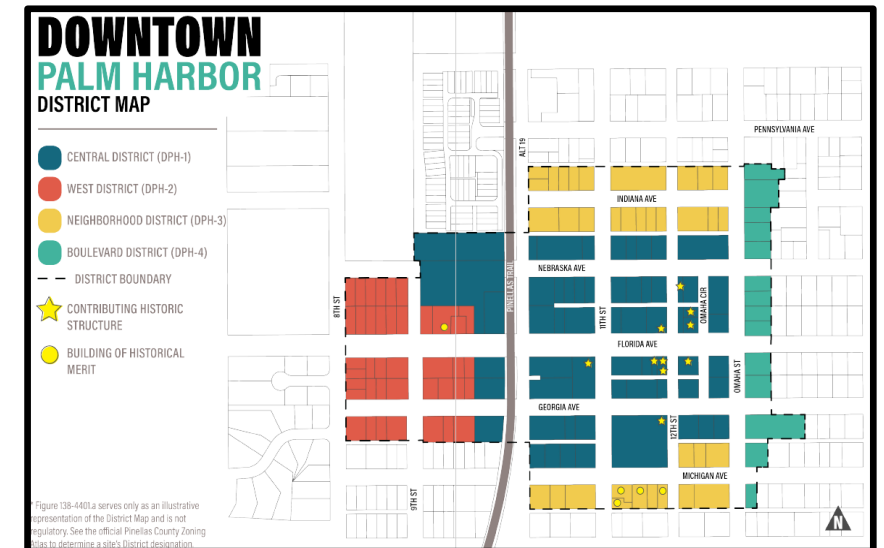


**P H C S A**

Palm Harbor Community Services Agency, Inc.

## Downtown Palm Harbor Revitalization:

- DPH Master Plan Adopted Oct. 2020
- DPH Form Based Code Anticipated Approval Fall 2021
- **DPH Advisory Board:** Community and Business Stakeholders committed to promoting a unique and vibrant business core and to establish a framework for the sustainable redevelopment of downtown Palm Harbor through public/private partnerships and robust stakeholder engagement.

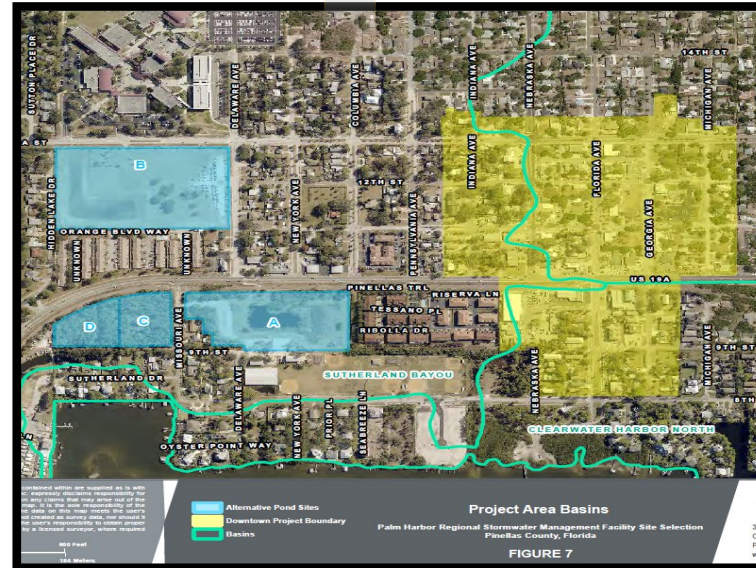


# Downtown PH Revitalization Projects

Create a Sustainable Master Streetscape and Parking Plan



Create a Regional Stormwater Facility



Downtown Palm Harbor Branding & Wayfinding



# Working with North County Community Partners



# Mid/South County Community Plans



## Highpoint Goals

- Community Connectivity
- Enhance Economic Opportunities
- Expand Service Delivery

## Next Steps

- Identify strategies and priority projects
- Take plan to community at large
- Identify funding source(s)

## Ridgecrest/Dansville Goals

- Enhance Connectivity
- Preserve/Enhance Natural Systems
- Encourage Local Retail/Mixed Use
- Brown Field and Infill Redevelopment
- Streamline Service Delivery

## Next Steps

- Implement strategies
- Identify funding source(s)

# Mid/South County Community Plans

## Greater Ridgecrest

- Friends of Ridgecrest
- Plan complete

## Highpoint

- Community Advisory Committee
- Meeting monthly to create plan



# Mid/South County Projects

## Current and Completed Projects

- Roof replacement at Ridgecrest YMCA
- YMCA game field lighting replacement
- Russel Ave. Pedestrian Connection
- Improvements to tennis and pickleball courts
- Ridgecrest and Dansville gateway monument signs
- Highpoint Neighborhood Family Center Second Location
- Sidewalk installation along 119<sup>th</sup> St between Ulmerton and 132<sup>nd</sup> Ave
- Historical designation of Dansville and installation of Dan Henry historical marker
- Construction of outdoor recreation facility on former Highpoint Elementary Site





# Mid/South County CIP Update

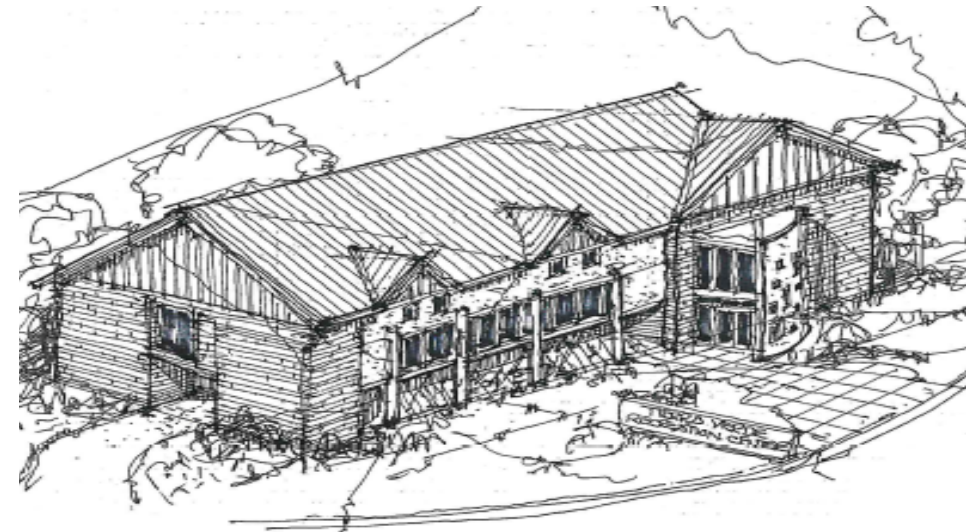
## Highpoint Recreation Facility

- Design and Engineering *In Progress*
- Construction *October 2022*



## Tierra Verde Community Center

- Design and Engineering *FY 22*
- Construction *FY 23*



# Lealman Community Updates

## Lealman CRA Plan Vision

- Improving the quality of life for all Lealman residents; allowing for a dynamic and diverse community where people of all ages, ethnicities, and incomes have opportunities to find quality housing, jobs, education, goods, services, and recreational and cultural amenities.

## Lealman CRA Goals

- Establish Community Identity/Branding
- Improve Aesthetics/Beautification
- Catalyze Residential and Commercial Redevelopment
- Holistic Community Development
- Maximize Public/Private Partnerships



# Strategic Projects in Lealman

## CRA Projects

- Mural Program
- Residential & Commercial Site Improvement Programs
- Lealman and Neri Park Enhancements
- Gateway/Wayfinding Signage and Site Design/Construction
- Housing Services Request for Proposals
- Lealman Exchange Strategic Planning

## CIP Projects

- Joe's Creek and Trail Revitalization
- Lealman Heights Redevelopment
- Lealman Regional Stormwater Facility Study
- Raymond H. Neri Community Park
- Major Corridors: 62<sup>nd</sup>, 54<sup>th</sup>, and 46<sup>th</sup> Avenues

Est. Comp.	Project/Program Name	Budget Estimate*	Notes
<b>FY20-21 Lealman Work Plan</b>			
<b>Lealman Community Redevelopment Area (CRA) Projects Utilizing Tax Increment Financing (TIF) Revenue</b>			
FY21	CRA Mural Grant Program	\$50,000	Partnership with Creative Pinellas to implement CRA mural program. Agreement currently under review for execution.
FY21	Lealman Exchange Strategic Planning	\$24,500	St. Petersburg Group selected as consultant. 12-week engagement anticipated to be complete by end of December.
FY21	Alley Analysis and Improvement Action Plan	\$75,000	Alley study tree plan associated with implementation of Form-Based Code. Draft report under review. Urban Forestry tree plan associated with implementation of Form-Based Code. Draft report under review.
FY21	Division Drive Placemaking	\$50,000	Including sidewalk connections, crosswalk striping, paved paths, and shade enhancements to Neri Park access point consisting of landscaping, bike rack, bench, fence, modifications and eventual wayfinding signage. Sidewalk connection to provide safe access to 46th Ave. N. is also currently under review.
FY21	Neri Park Entrance Enhancements (Low St. & 40th St. N.)	\$70,000	Enhancements to Neri Park access point consisting of landscaping, bike rack, bench, fence, modifications and eventual wayfinding signage. Sidewalk connection to provide safe access to 46th Ave. N. is also currently under review.
FY21	Lealman Neighborhood Park Enhancements	\$50,000	New pedestrian access points and landscaping, including enhancements to "L" public art installation.
FY21	FY20 Residential Site Improvement Grant Program Administration	\$250,000	FY20 grant application cycle open now. Twenty-five applications received to date totaling approximately \$250,000.
FY21	FY20 Commercial Site Improvement Grant Program Administration	\$250,000	FY20 grant application cycle open now. Three applications received to date totaling \$31,085.73.
FY21	Transit Stop Improvements	\$130,000	Coordinating with PSTA to install up to six bus shelters eligible for cost share.
FY21	Neri Park Entrance Enhancements (46th Ave N.)	\$100,000	Design and construct improvements to entry and adjacent parcel with stormwater pond, amenities.
FY21	Technology Equity Initiatives	\$50,000	Installation of public WiFi coverage for prioritized sites throughout the CRA such as Lealman Park, Neri Park and greenspace areas on the Lealman Exchange property.
FY22	58th Ave N. Sidewalk (North Side)	\$250,000	\$250K is estimated design costs including all survey and right of way mapping work. Additional construction costs likely to be between \$550K to \$750K and occur in FY22 for a total of between \$800K-\$1M.
FY22	Streetscaping / Placemaking / Gateway & Wayfinding Signage	\$740,000	Landscaping architecture and engineering design and construction costs for corridor improvements along 54th Ave N, 46th Ave N, 49th St. N. and 34th St. N., including landscaping, gateway and wayfinding signage.
FY22	Home Investment Grant Program	TBD	Land acquisition subsidy for construction of new affordable single family workforce housing.
FY22	Home Rehabilitation Grant Program	\$500,000	Home rehabilitation grant program for residential single family homes. Program will launch in January.
<b>Completed Projects</b>			
FY21	CRA Crosswalk Striping - 28th St N & 41st Ave N	\$2,823	Crosswalks striped on 41st Ave and the adjacent business (Whizz Inn).
FY20	CRA Crosswalk / RRFBs - 28th St N & 50th Ave N	\$12,789	Linking Lealman mobility project. Installation of Rectangular Rapid Flash Beacon (RRFB), 58th Ave N.
FY20	CRA Bicycle Signage - 58th Ave. N	\$2,700	Installation of bicycle safety signage and striping on 58th Ave N.
FY20	CRA Commercial Site Improvement Grant Administration	N/A	Awards made in FY19 but administered in FY20. \$83,765.74 spent in FY20.
FY20	CRA Residential Site Improvement Grant Administration	N/A	Award made in FY19 but administered in FY20. \$20,000 spent in FY20.
FY20	YMCA Managed Services Agreement Extension	N/A	Managed Services Agreement for the Lealman Exchange
FY20	Lealman Exchange Website	N/A	Website created for Lealman Exchange
FY20	Lealman Exchange Computer Labs Design/Installation	\$185,000	Two computer labs designed and installed at Lealman Exchange utilizing Penny for Pinellas revenue.
FY20	Lealman Exchange Computer Labs Implementation	N/A	Workforce Services Agreement with CareerSource Pinellas for first floor computer lab has been fully executed. Initiative includes Pinellas Public Library Cooperative partnership for library database access. Services anticipated to start in December.
<b>Capital Improvement Projects/Other Significant Projects (Non-TIF)</b>			
FY21	Lealman Exchange Generator	\$850,000	New generator to provide full backup power to 2-story building to increase sheltering capabilities.
FY21	Lealman Exchange Indoor & Outdoor Courts	\$255,000	Replacing flooring and expand basketball court for Lealman Exchange gymnasium and replace outdoor basketball courts behind the facility and adjacent to Neri Park.
FY22	Lealman CRA EPA Brownfields Grant	\$300,000	\$300,000 EPA grant received to conduct Phase 1 and Phase 2 assessments in the Lealman CRA.
FY22	Lealman Heights Single and Multi-Family Affordable Housing	TBD	Zoning and Land Use change approved by BCC to accommodate redevelopment. Recommendation to proceed with Southport Community Development (up to 82 multi-family units depending on final financing) and Habitat for Humanity (up to 11 single family units).
FY23	Raymond H. Neri Park	\$3,790,000	Design and construction of Phase 1 of the Neri Park Masterplan
FY21	Lealman Regional Stormwater Facility Study	\$3,753,000	Development of regional stormwater facilities and development of a credit system to catalyze redevelopment.
FY26	Joe's Creek Trail and Watershed BMPs	\$8,201,000	RFP completed in November of 2020. PER anticipated to be complete October 2023.
FY26	46th Ave Roadway and Drainage	\$2,989,000	PER underway. Construction anticipated in FY23-26.
FY26	62nd Ave. Roadway Improvements - 49th St. to 34th St.	\$17,272,000	PER underway. Construction anticipated in FY23-26.
FY25	54th Ave. Roadway Improvements - 49th St. to 34th St.	\$5,506,000	PER underway. Construction anticipated in FY24-25.

# Lealman CRA Mural Program



- 5 murals located on either public or private property
- Lealman Exchange generator enclosure chosen as one site



# Lealman CRA Mural Program



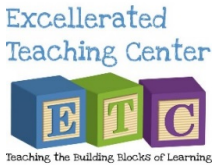
5 murals located on either public or private property  
Lealman Exchange generator enclosure chosen as one site



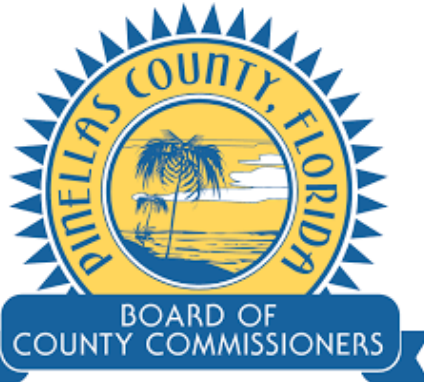
# Working With Community Partners



# Working with Community Partners



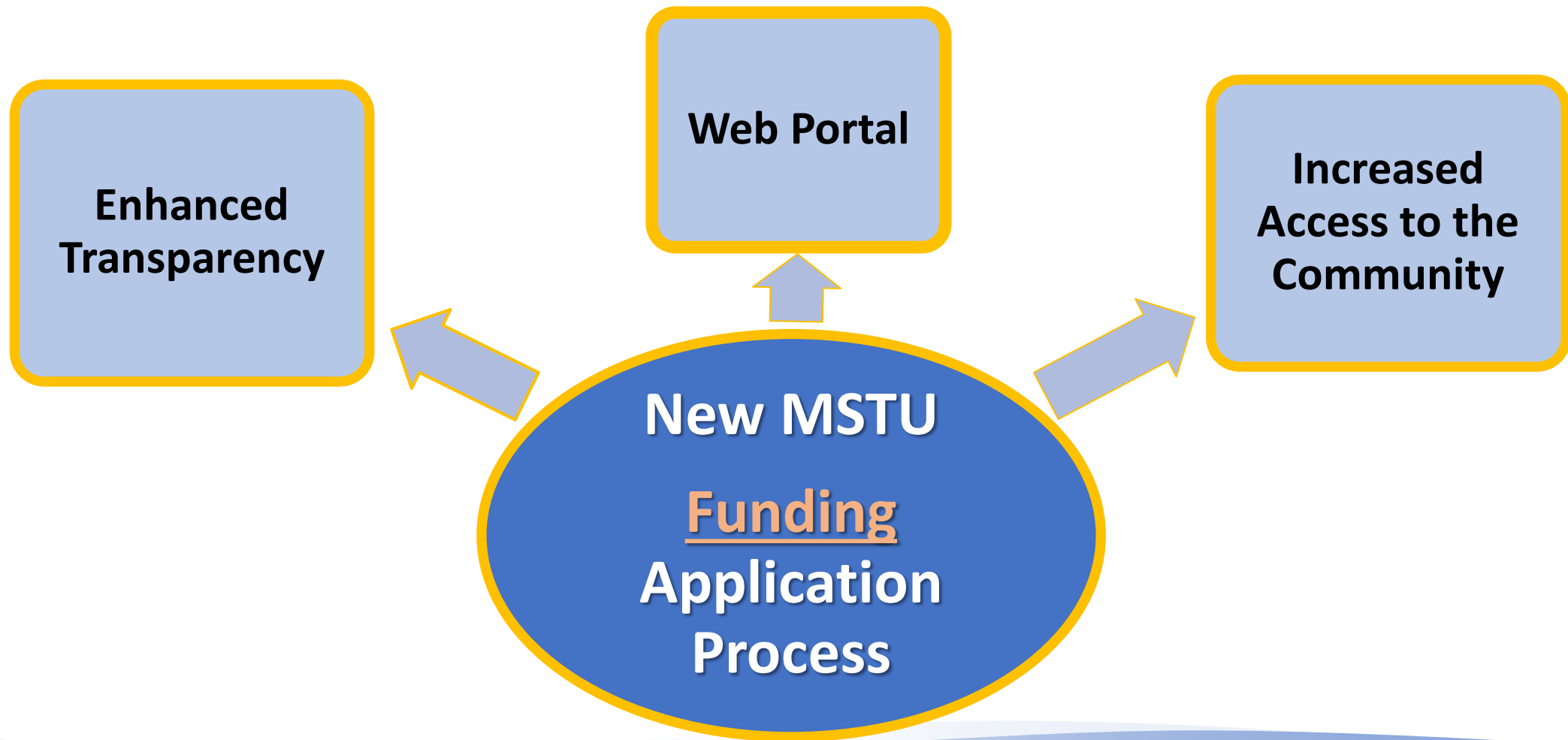
Foundation for a Healthy St. Petersburg



LEALMAN COMMUNITY ASSOCIATION  
Serving the residents of Lealman for over 20 years



# New MSTU Funding Application Process





# MSTU Special Projects Funded

## • Projects Funded FY 20/FY 21

- Largo For Youth Football Equipment
- Tierra Verde Tennis and Pickleball Court Enhancements
- East Lake Recreation Meadow Fields Enhancements
- East Lake Community Library Enhancements
- CSA Palm Harbor Facility Enhancements
- Pop Stansel Park Electric Entrance Gate
- Palm Harbor Library Enhancements
- Palm Harbor Library Outreach Vehicle
- SYAA Facility Enhancements
- Florida Dream Center Equipment

