

LU/DMP-18-10-19

Location Map

Land Use
From: Residential Suburban & Transportation/Utility Overlay
To: Residential Low & Transportation/Utility Overlay
 And Establishment of a Development Master Plan on an RPD zoned property.

36/27/15/89334/000/0330

Prepared by: Pinellas County Planning Department



Date: 08/27/2019



1 inch = 4.5 miles



LU/DMP-18-10-19

Land Use
From: Residential Suburban & Transportation/Utility Overlay
To: Residential Low & Transportation/Utility Overlay
 And Establishment of a Development Master Plan on an RPD zoned property.

Current Land Use

36/27/15/89334/000/0330

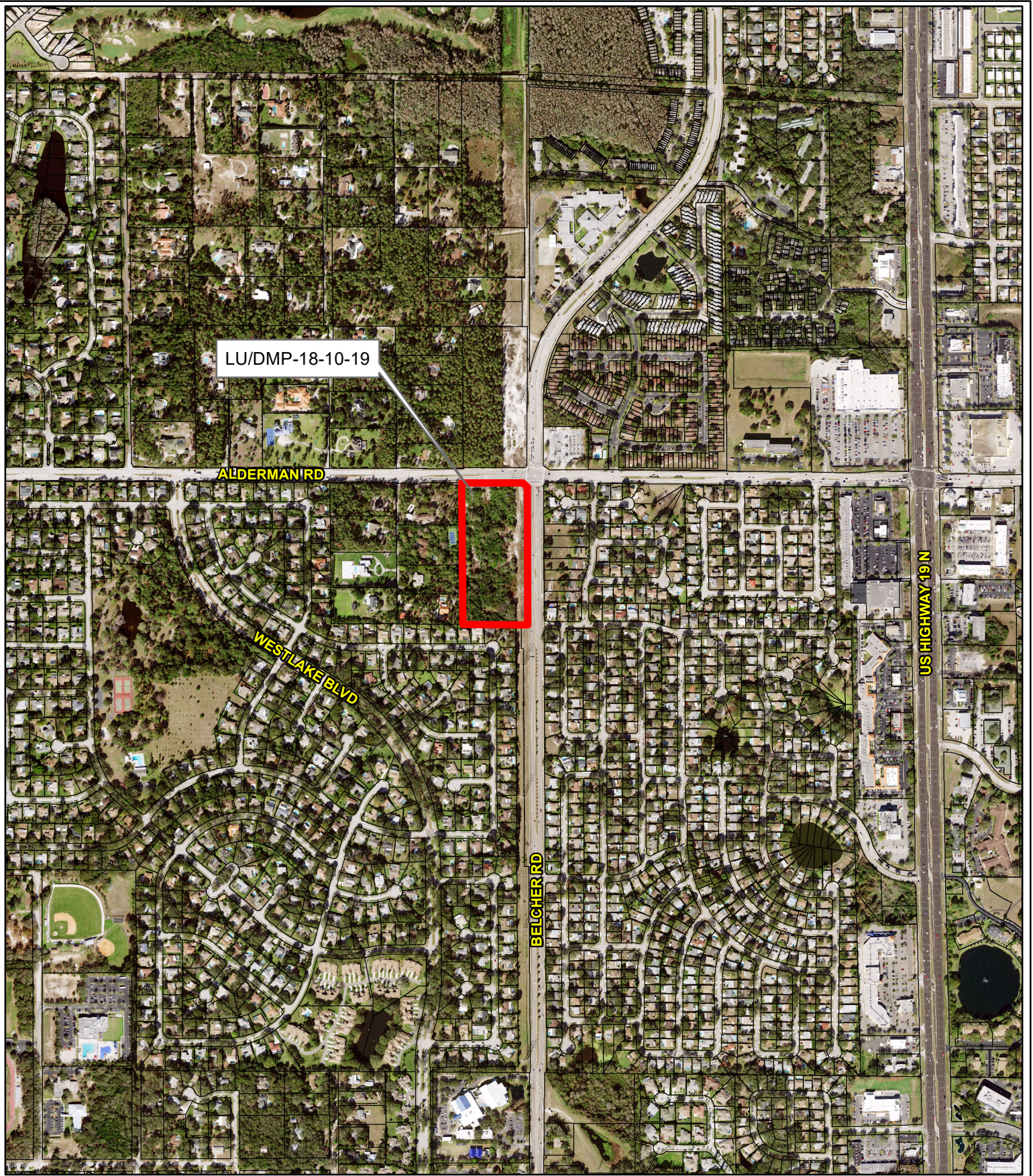
Prepared by: Pinellas County Planning Department



Date: 08/27/2019



1 inch = 0.16 miles



LU/DMP-18-10-19

Aerial Map

Land Use
From: Residential Suburban & Transportation/Utility Overlay
To: Residential Low & Transportation/Utility Overlay
 And Establishment of a Development Master Plan on an RPD zoned property.

36/27/15/89334/000/0330

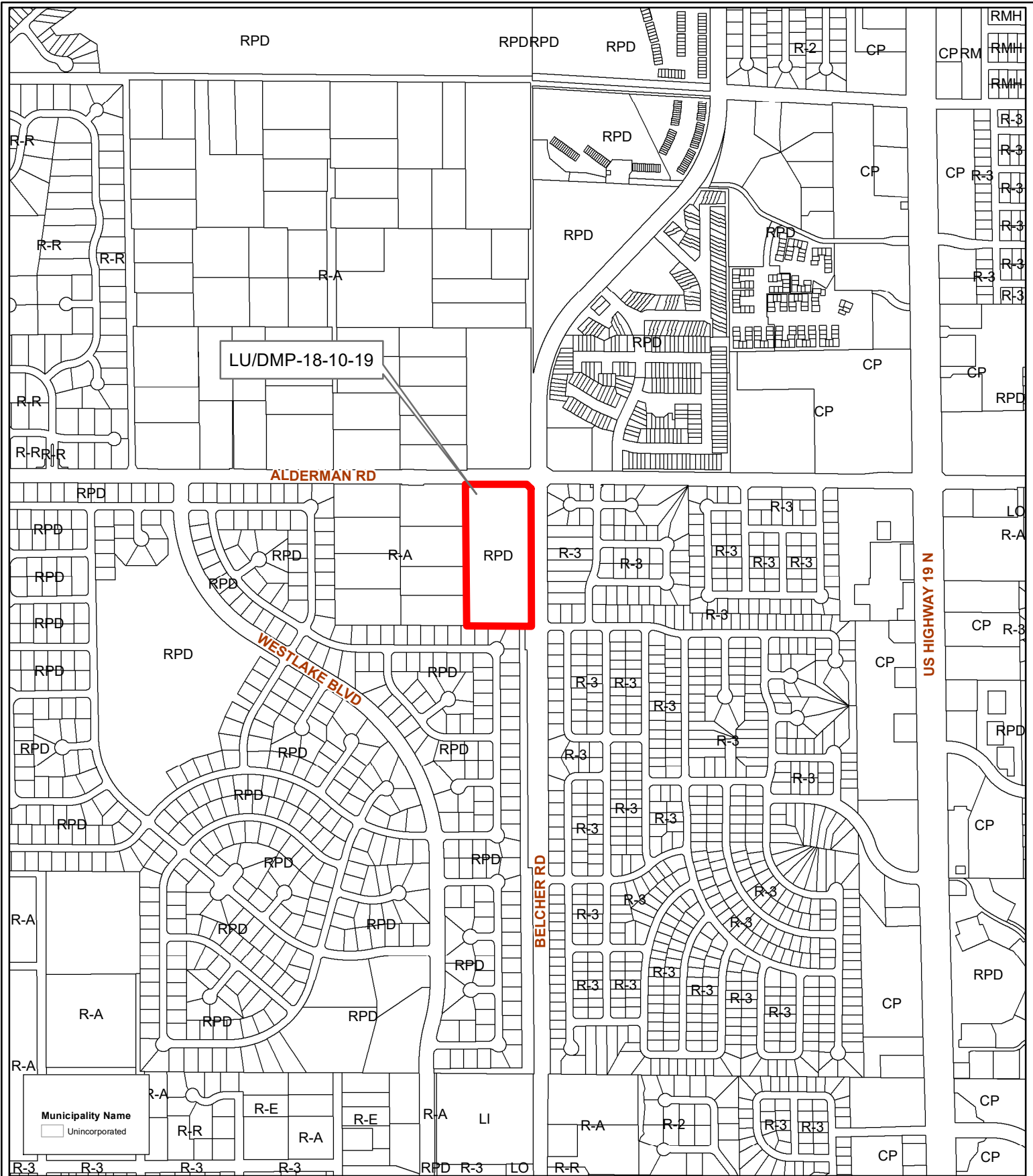
Prepared by: Pinellas County Planning Department



Date: 08/27/2019



1 inch = 0.16 miles



LU/DMP-18-10-19

ALDERMAN RD

WESTLAKE BLVD

BELCHER RD

US HIGHWAY 19 N

Municipality Name
 Unincorporated

LU/DMP-18-10-19

Municipal Map

From: Residential Suburban & Transportation/Utility Overlay
Land Use To: Residential Low & Transportation/Utility Overlay
 And Establishment of a Development Master Plan on an RPD zoned property.

36/27/15/89334/000/0330

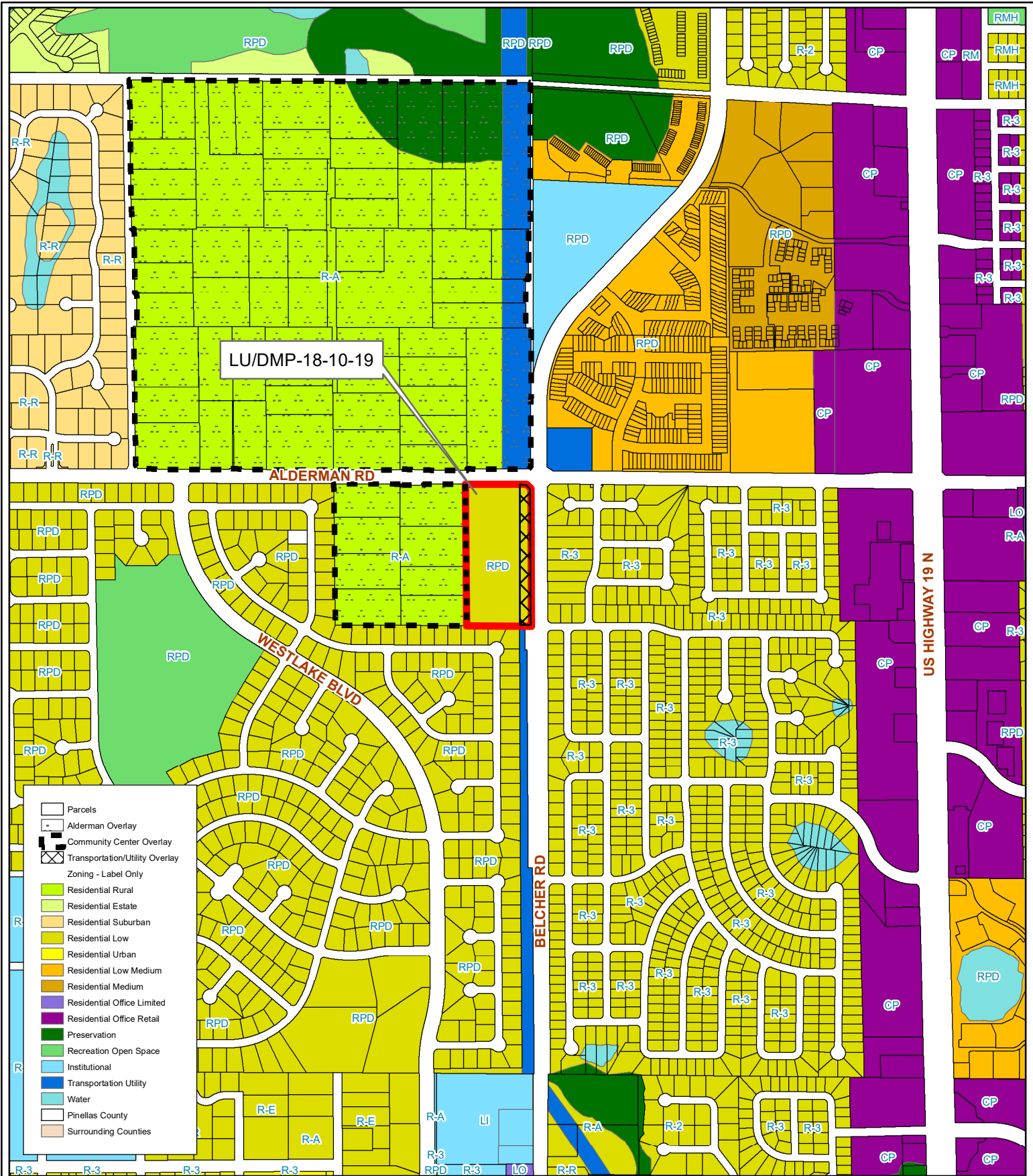
Prepared by: Pinellas County Planning Department



Date: 08/27/2019



1 inch = 0.16 miles



LU/DMP-18-10-19

Proposed Land Use

From: Residential Suburban & Transportation/Utility Overlay
Land Use To: Residential Low & Transportation/Utility Overlay
 And Establishment of a Development Master Plan on an RPD zoned property.

36/27/15/89334/000/0330

Prepared by: Pinellas County Planning Department



Date: 08/27/2019



1 inch = 0.16 miles